

Department of Human Services
Addictions and Mental Health Division

Oregon Health Plan Mental Health Utilization Report

*April 2006
Through
March 2007*

Report Produced Quarterly by
Program Analysis and Evaluation Team
OCTOBER 2007



EXECUTIVE SUMMARY
REPORT ON OREGON HEALTH PLAN (OHP)
UTILIZATION AND ENROLLMENT FOR
MENTAL HEALTH SERVICES:
APRIL 2006 THROUGH MARCH 2007

The Mental Health Organization (MHO) Utilization Quarterly Report for the period of April 1, 2006 through March 31, 2007, contains enrollment, unique served and hospitalization data. The data for this report were pulled October 8, 2007. All information came from the Division of Medical Assistance Programs' (DMAP) Decision Support/Surveillance and Utilization Review System (DSSURS) and is comparable to the report released in July 2007.

Population

- This report reflects only Medicaid members who were eligible, enrolled, and received mental health services during the report period.
- The acute care admission population is any enrolled Medicaid member who was admitted for inpatient psychiatric treatment.
- Those who are receiving mental health services and alcohol and drug treatment are included in this report.

Limitations

- This report does not include tests of the statistical significance of apparent differences among providers or across time periods.
- The report is a “snap-shot” in time for the specific report being created and is comparable to the report released in July 2007.
- Acute hospitalization data includes and is not limited to transfers from one facility to another and/or re-admitted within a 24-hour time frame.
- There is a 180-day lag between the times a service is delivered and the time the services is contractually required to be billed.

Formula

- The calculations for the unique enrollees and/or served is dividing the number of total enrollees by the number served within the same time period.
- The penetration rate, or percentage rate, is a general measure of access and is related to the utilization of services.

Report Schedule

This report is created on a quarterly basis.

TABLE OF CONTENTS

The format and contents are constructed as follows:

- Figures are used to illustrate trends in statewide data.
- Tables are used to summarize quarterly data at the MHO level. Some tables include FFS and All Eligibles.



Executive Summary	i
-------------------------	---

Enrollment Data:

Table 1: Unique Members Enrolled by MHO	1
Figure 1: Total Unique Members Enrolled by Age Groups	1
Table 2: Unique Members Enrolled by Age Groups/MHO	2
Table 3: Enrollment Numbers per Month.....	3

Served Data:

Table 4: Unique Members Served by MHO and Percentage Rate.....	4
Figure 2: Total Unique Members Served by Age Groups	4
Table 5: Unique Served by MHO/Age Group and Percentage Rate	5
Figure 3: Total Unique Served by Ethnicity	6
Table 6: Unique Served by MHO/Ethnicity and Percentage Rate	6
Figure 4: Total All Quarters: Unique Encounters by Diagnostic Groups	9
Table 7: Unique Served Encounters by MHO/Diagnostic Groups.....	9
Table 8: Unique Members Served per Month.....	10

Hospital Data:

Table 9: Unique Hospital Admissions per 1,000 Members Enrolled	11
Table 10: Unique Hospital Admissions: Age Groups per 1,000 Members Enrolled ...	11
Table 11: Average Hospital Days of Service.....	12
Table 12: Average Hospital Days by MHO/Age Group	13
Table 13: Percent of Hospital Re-Admission within 30 days	14
Table 14: Total Hospital Re-Admission within 180 days.....	14
Figure 5: Total Seen by Outpatient within 7 Days of Hospital Discharge.....	15
Table 15: Seen by Outpatient within 7 Days of Hospital Discharge	15

Glossaries:

MHO Utilization Report Glossary	16
Diagnostic Categories Glossary	18
Service Categories Glossary	21

ENROLLMENT DATA

- ❖ Enrolled: Eligible for OHP and enrolled in an MHO
- ❖ Eligibles: Both Enrolled and FFS
- ❖ Fee-For-Service (FFS): Eligible for OHP and NOT enrolled with an MHO (Open Card)



TABLE 1: UNIQUE MEMBERS ENROLLED BY MHO

MHO Contractors	2006						2007	
	2 nd Qtr	% Enrolled	3 rd Qtr	% Enrolled	4 th Qtr	% Enrolled	1 st Qtr	% Enrolled
ABHA	26,879	7.1%	27,984	7.2%	26,997	7.1%	26,450	7.1%
Clackamas	25,893	6.9%	26,995	6.9%	26,152	6.9%	25,911	7.0%
FamilyCare	10,784	2.9%	11,433	2.9%	11,335	3.0%	10,882	2.9%
GOBHI	31,942	8.5%	33,003	8.5%	32,049	8.4%	31,243	8.4%
JBH	65,192	17.3%	67,162	17.2%	65,533	17.3%	64,333	17.3%
LaneCare	35,639	9.5%	37,073	9.5%	36,255	9.6%	35,454	9.5%
MVBCN	73,223	19.5%	75,751	19.4%	74,162	19.5%	73,281	19.7%
Verity	73,510	19.5%	76,186	19.6%	74,193	19.5%	72,795	19.5%
Washington	33,098	8.8%	34,001	8.7%	32,944	8.7%	32,238	8.7%
Total Enrolled	376,160	100%	389,588	100%	379,620	100%	372,587	100%

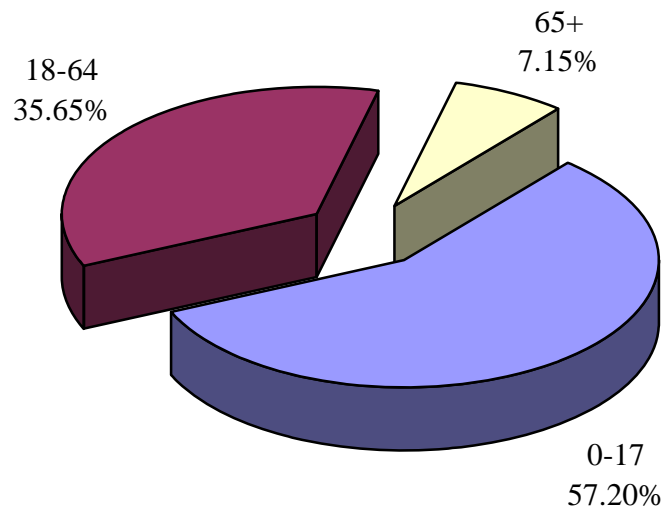
n=Unique Enrolled/d=Total Enrolled

	2 nd Qtr	% All Eligibles	3 rd Qtr	% All Eligibles	4 th Qtr	% All Eligibles	1 st Qtr	% All Eligibles
Total Enrolled	376,160	89.6%	389,588	93.6%	379,620	93.0%	372,587	92.1%
FFS ³	43,556	10.4%	26,666	6.4%	28,505	7.0%	32,133	7.9%
All Eligibles ²	419,716	100.0%	416,254	100.0%	408,125	100.0%	404,720	100.0%

n=Total Enrolled/d=All Eligibles

n=FFS/d=All Eligibles

FIGURE 1: TOTAL UNIQUE MEMBERS ENROLLED BY AGE GROUPS



³ Fee-For-Service (FFS): Eligible for OHP and NOT enrolled with an MHO (Open Card)

² Eligibles: Both Enrolled and FFS

TABLE 2: UNIQUE MEMBERS Enrolled¹ by Age Groups & Percentage by MHO Total

MHO Contractors	Age Groups	2006						2007	
		2 nd Qtr	% by MHO Qtr Total ²	3 rd Qtr	% by MHO Qtr Total	4 th Qtr	% by MHO Qtr Total	1 st Qtr	% by MHO Qtr Total
ABHA	0-17	15,199	56.5%	16,179	57.8%	15,705	58.2%	15,543	58.8%
	18-64	9,935	37.0%	10,046	35.9%	9,571	35.5%	9,201	34.8%
	65 +	1,745	6.5%	1,759	6.3%	1,721	6.4%	1,706	6.4%
Clackamas	0-17	14,882	57.5%	15,787	58.5%	15,302	58.5%	15,428	59.5%
	18-64	8,805	34.0%	8,922	33.1%	8,566	32.8%	8,246	31.8%
	65 +	2,206	8.5%	2,286	8.5%	2,284	8.7%	2,237	8.6%
FamilyCare	0-17	5,971	55.4%	6,433	56.3%	6,468	57.1%	6,305	57.9%
	18-64	4,368	40.5%	4,522	39.6%	4,402	38.8%	4,127	37.9%
	65 +	445	4.1%	478	4.2%	465	4.1%	450	4.1%
GOBHI	0-17	18,354	57.5%	19,242	58.3%	18,821	58.7%	18,604	59.5%
	18-64	11,273	35.3%	11,446	34.7%	10,921	34.1%	10,366	33.2%
	65 +	2,315	7.2%	2,315	7.0%	2,307	7.2%	2,273	7.3%
JBH	0-17	34,345	52.7%	35,990	53.6%	35,348	53.9%	35,122	54.6%
	18-64	26,259	40.3%	26,542	39.5%	25,563	39.0%	24,668	38.3%
	65 +	4,588	7.0%	4,630	6.9%	4,622	7.1%	4,543	7.1%
LaneCare	0-17	18,474	51.8%	19,564	52.8%	19,344	53.4%	19,050	53.7%
	18-64	15,162	42.5%	15,440	41.6%	14,833	40.9%	14,317	40.4%
	65 +	2,003	5.6%	2,069	5.6%	2,078	5.7%	2,087	5.9%
MVBCN	0-17	44,021	60.1%	46,151	60.9%	45,573	61.5%	45,579	62.2%
	18-64	24,724	33.8%	24,998	33.0%	23,982	32.3%	23,141	31.6%
	65 +	4,478	6.1%	4,602	6.1%	4,607	6.2%	4,561	6.2%
Verity	0-17	38,846	52.8%	41,075	53.9%	40,313	54.3%	39,984	54.9%
	18-64	28,172	38.3%	28,554	37.5%	27,368	36.9%	26,366	36.2%
	65 +	6,492	8.8%	6,557	8.6%	6,512	8.8%	6,445	8.9%
Washington	0-17	21,048	63.6%	21,892	64.4%	21,277	64.6%	21,102	65.5%
	18-64	9,439	28.5%	9,438	27.8%	8,983	27.3%	8,459	26.2%
	65 +	2,611	7.9%	2,671	7.9%	2,684	8.1%	2,677	8.3%
Total by Quarter	0-17	211,140	56.1%	222,313	57.1%	218,151	57.5%	216,717	58.2%
	18-64	138,137	36.7%	139,908	35.9%	134,189	35.3%	128,891	34.6%
	65 +	26,883	7.1%	27,367	7.0%	27,280	7.2%	26,979	7.2%

¹ Enrolled: Eligible for OHP and enrolled in an MHO

² Percentage formula: n=unique enrolled by age group/d=MHO total enrolled

TABLE 3: ENROLLMENT NUMBERS PER MONTH

MHO Contractor	Apr-06	May-06	Jun-06	Jul-06	Aug-06	Sep-06	Oct-06	Nov-06	Dec-06	Jan-07	Feb-07	Mar-07
ABHA	23,903	23,809	23,868	25,033	25,407	24,679	25,071	24,459	23,362	23,993	23,853	23,931
Clackamas	22,795	22,891	22,925	24,214	24,719	23,912	24,238	23,651	22,768	23,494	23,543	23,580
FamilyCare	9,290	9,359	9,390	9,776	10,154	10,240	10,283	10,095	9,913	9,728	9,773	9,484
GOBHI	28,517	28,477	28,485	29,721	30,331	29,349	29,838	29,128	27,998	28,574	28,614	28,546
JBH	58,602	58,374	58,737	60,838	61,897	60,101	61,319	60,614	58,375	59,348	59,119	59,023
LaneCare	32,227	32,228	32,373	33,901	34,421	33,318	34,187	33,521	32,282	33,161	32,899	32,778
MVBCN	65,880	65,677	66,183	68,925	69,582	67,743	69,459	68,521	66,025	67,507	67,430	67,909
Verity	66,605	66,411	67,245	69,533	70,887	68,897	70,239	69,235	66,648	68,053	67,727	67,960
Washington	29,290	29,232	29,669	30,672	31,194	29,978	30,940	30,345	28,698	29,518	29,548	29,643
Monthly Totals	337,109	336,458	338,875	352,613	358,592	348,217	355,574	349,569	336,069	343,376	342,506	342,854

% Monthly Increase/Decrease	-0.19%	0.71%	3.90%	1.67%	-2.98%	2.07%	-1.72%	-4.02%	2.13%	-0.25%	0.10%
-----------------------------	--------	-------	-------	-------	--------	-------	--------	--------	-------	--------	-------

Eligibles	419,993	419,935	419,221	418,182	416,393	414,186	411,094	408,769	404,512	404,698	404,145	405,318
FFS	82,884	83,477	80,346	65,569	57,801	65,969	55,520	59,200	68,443	61,322	61,639	62,464

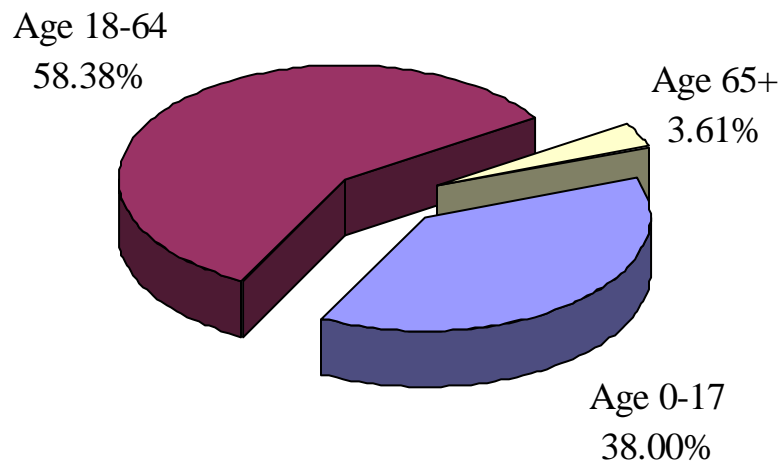
SERVICE DATA



TABLE 4: UNIQUE MEMBERS SERVED BY MHO AND PERCENTAGE² OF ENROLLEES SERVED

MHO Contractors	2006						2007	
	2 nd Qtr	% Rate	3 rd Qtr	% Rate	4 th Qtr	% Rate	1 st Qtr	% Rate
ABHA	1,916	7.1%	1,873	6.7%	1,857	6.9%	1,807	6.8%
Clackamas	1,867	7.2%	1,774	6.6%	1,763	6.7%	1,871	7.2%
FamilyCare	515	4.8%	561	4.9%	549	4.8%	554	5.1%
GOBHI	2,502	7.8%	2,264	6.9%	2,218	6.9%	2,308	7.4%
JBH	4,706	7.2%	4,634	6.9%	4,594	7.0%	4,709	7.3%
LaneCare	4,044	11.3%	3,880	10.5%	3,856	10.6%	3,888	11.0%
MVBCN	4,938	6.7%	4,942	6.5%	4,901	6.6%	5,013	6.8%
Verity	6,390	8.7%	6,256	8.2%	6,471	8.7%	6,795	9.3%
Washington	2,397	7.2%	2,251	6.6%	2,228	6.8%	2,250	7.0%
Total Served	29,275	7.8%	28,435	7.3%	28,437	7.5%	29,195	7.8%
FFS	631	1.4%	698	2.6%	646	2.3%	564	1.8%

FIGURE 2: TOTAL UNIQUE MEMBERS SERVED BY AGE GROUPS



² Percentage Formula: n=Unique Served/d=Unique Enrolled.

TABLE 5: UNIQUE¹ SERVED BY MHO/AGE GROUP AND PERCENTAGE² OF ENROLLEES SERVED

MHO Contractors	Age Groups	2006						2007	
		2 nd Qtr	Rate	3 rd Qtr	Rate	4 th Qtr	Rate	1 st Qtr	Rate
ABHA	0-17	787	5.2%	721	4.5%	734	4.7%	759	4.9%
	18-64	1,081	10.9%	1,109	11.0%	1,073	11.2%	1,007	10.9%
	65+	48	2.8%	43	2.4%	50	2.9%	41	2.4%
Clackamas	0-17	669	4.5%	649	4.1%	669	4.4%	719	4.7%
	18-64	1,136	12.9%	1,069	12.0%	1,035	12.1%	1,096	13.3%
	65+	62	2.8%	56	2.4%	59	2.6%	56	2.5%
FamilyCare	0-17	239	4.0%	255	4.0%	258	4.0%	269	4.3%
	18-64	273	6.3%	304	6.7%	289	6.6%	281	6.8%
	65+	3	0.7%	2	0.4%	2	0.4%	4	0.9%
GOBHI	0-17	1,061	5.8%	902	4.7%	918	4.9%	955	5.1%
	18-64	1,362	12.1%	1,282	11.2%	1,233	11.3%	1,272	12.3%
	65+	79	3.4%	80	3.5%	67	2.9%	81	3.6%
JBH	0-17	1,783	5.2%	1,667	4.6%	1,724	4.9%	1,846	5.3%
	18-64	2,804	10.7%	2,833	10.7%	2,748	10.7%	2,749	11.1%
	65+	119	2.6%	134	2.9%	122	2.6%	114	2.5%
LaneCare	0-17	1,561	8.4%	1,463	7.5%	1,473	7.6%	1,543	8.1%
	18-64	2,413	15.9%	2,342	15.2%	2,305	15.5%	2,269	15.8%
	65+	70	3.5%	75	3.6%	78	3.8%	76	3.6%
MVBCN	0-17	2,000	4.5%	1,969	4.3%	2,006	4.4%	2,065	4.5%
	18-64	2,773	11.2%	2,806	11.2%	2,733	11.4%	2,785	12.0%
	65+	165	3.7%	167	3.6%	162	3.5%	163	3.6%
Verity	0-17	2,248	5.8%	2,101	5.1%	2,133	5.3%	2,267	5.7%
	18-64	3,759	13.3%	3,771	13.2%	3,956	14.5%	4,149	15.7%
	65+	383	5.9%	384	5.9%	382	5.9%	379	5.9%
Washington	0-17	874	4.2%	810	3.7%	856	4.0%	879	4.2%
	18-64	1,404	14.9%	1,331	14.1%	1,260	14.0%	1,249	14.8%
	65+	119	4.6%	110	4.1%	112	4.2%	122	4.6%
Total Served	0-17	11,222	5.3%	10,537	4.7%	10,771	4.9%	11,302	5.2%
	18-64	17,005	12.3%	16,847	12.0%	16,632	12.4%	16,857	13.1%
	65+	1,048	3.9%	1,051	3.8%	1,034	3.8%	1,036	3.8%

¹ Unique Served: All duplicate records are removed.

² Percentage Formula: n=Unique Served/d=Unique Enrolled.

FIGURE 3: TOTAL UNIQUE¹ SERVED BY ETHNICITY

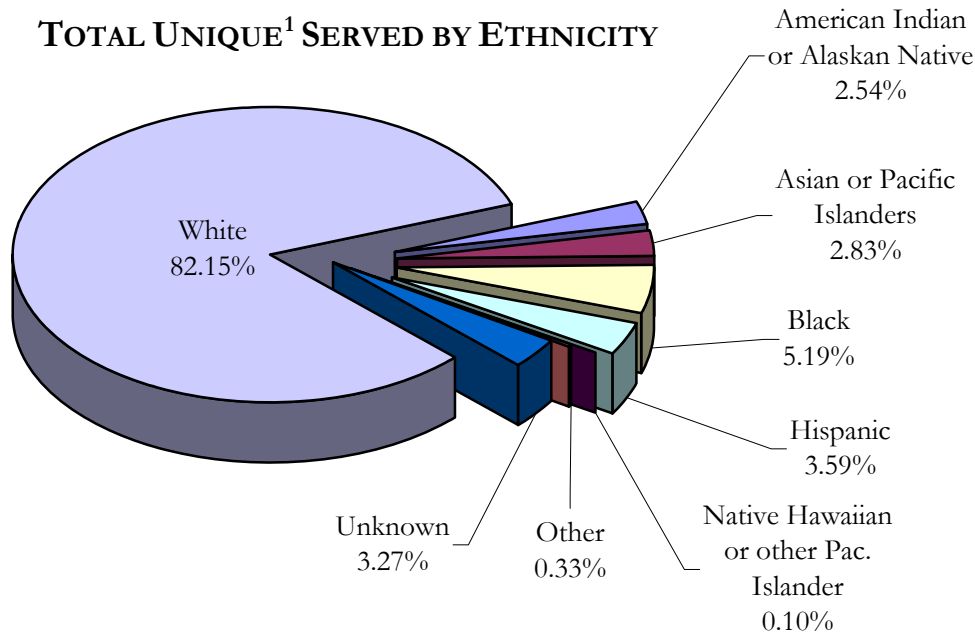


TABLE 6: UNIQUE SERVED BY MHO/ETHNICITY AND PERCENTAGE² OF ENROLLEES SERVED

MHO	Race Description	2006						2007	
		2 nd Qtr	Rate	3 rd Qtr	Rate	4 th Qtr	Rate	1 st Qtr	Rate
ABHA	Am. Indian/Alaskan Ntv	44	4.2%	47	4.2%	38	3.8%	33	4.1%
	Asian or Pacific Islanders	9	3.6%	8	3.1%	7	2.8%	8	3.4%
	Black	21	6.5%	24	7.1%	17	5.4%	22	7.4%
	Hispanic	41	1.2%	44	1.2%	15	0.4%	4	0.1%
	Ntv Hawaiian/Pac. Islander	1	2.5%	3	7.9%	3	8.8%	3	7.5%
	Other	6	6.1%	4	4.5%	2	2.3%	3	3.6%
	Unknown	46	26.4%	54	27.6%	75	40.1%	83	49.1%
	White	1,748	8.1%	1,689	7.6%	1,700	7.9%	1,651	7.8%
Clackamas	Am. Indian/Alaskan Ntv	29	7.2%	31	6.8%	35	9.4%	39	11.5%
	Asian or Pacific Islanders	24	5.0%	22	4.2%	22	4.1%	23	4.4%
	Black	37	7.0%	43	7.3%	43	7.5%	54	8.9%
	Hispanic	87	1.7%	67	1.3%	45	0.9%	35	0.6%
	Ntv Hawaiian/Pac. Islander	4	7.5%	3	4.9%	3	4.7%	3	5.1%
	Other	4	3.2%	4	3.3%	5	4.1%	6	4.4%
	Unknown	25	12.3%	29	12.5%	53	23.0%	62	25.0%
	White	1,657	8.7%	1,575	8.0%	1,557	8.2%	1,649	8.9%

¹ Unique Served: All duplicate records are removed.

² Percentage Formula: n=Unique Served/d=Unique Enrolled.

TABLE 6: UNIQUE¹ SERVED BY MHO/ETHNICITY AND PERCENTAGE² OF ENROLLEES SERVED (*continued*)

MHO	Race Description	2006						2007	
		2 nd Qtr	Rate	3 rd Qtr	Rate	4 th Qtr	Rate	1 st Qtr	Rate
FamilyCare	Am. Indian/Alaskan Ntv	14	8.0%	13	7.7%	15	8.9%	14	9.2%
	Asian or Pacific Islanders	10	1.6%	22	3.2%	22	3.3%	23	3.6%
	Black	47	4.3%	47	3.9%	43	3.6%	45	4.0%
	Hispanic	16	1.3%	16	1.2%	16	1.1%	2	0.1%
	Ntv Hawaiian/Pac. Islander	0	0.0%	0	0.0%	1	1.6%	2	3.5%
	Other	0	0.0%	2	2.0%	2	2.1%	4	4.8%
	Unknown	5	7.7%	13	15.7%	15	16.7%	27	29.3%
	White	423	5.7%	448	5.8%	435	5.7%	437	6.0%
GOBHI	Am. Indian/Alaskan Ntv	66	8.2%	53	6.4%	51	7.2%	54	8.7%
	Asian or Pacific Islanders	12	6.8%	13	6.6%	15	8.3%	13	7.8%
	Black	22	7.1%	20	5.7%	23	6.6%	18	5.6%
	Hispanic	158	2.3%	132	1.8%	135	1.9%	87	1.2%
	Ntv Hawaiian/Pac. Islander	3	6.1%	3	5.6%	3	4.8%	3	5.1%
	Other	9	10.0%	11	11.2%	9	9.6%	5	6.0%
	Unknown	51	18.1%	48	15.3%	40	12.8%	119	38.6%
	White	2,181	9.4%	1,984	8.3%	1,942	8.3%	2,009	8.9%
JBH	Am. Indian/Alaskan Ntv	144	6.9%	138	6.4%	136	6.9%	149	8.4%
	Asian or Pacific Islanders	16	4.8%	15	4.0%	16	4.5%	13	3.9%
	Black	57	8.3%	46	6.4%	43	5.9%	51	7.3%
	Hispanic	148	2.6%	128	2.1%	113	1.9%	17	0.3%
	Ntv Hawaiian/Pac. Islander	4	3.8%	1	1.0%	3	3.1%	7	7.6%
	Other	12	5.8%	11	5.2%	10	5.0%	5	2.7%
	Unknown	114	15.7%	135	16.9%	166	21.5%	349	45.4%
	White	4,211	7.6%	4,160	7.3%	4,107	7.4%	4,118	7.6%
LaneCare	Am. Indian/Alaskan Ntv	84	12.7%	81	12.0%	76	12.2%	68	12.2%
	Asian or Pacific Islanders	29	5.9%	26	5.3%	21	4.5%	20	4.3%
	Black	104	11.6%	92	9.7%	97	10.2%	102	10.7%
	Hispanic	105	3.6%	103	3.3%	104	3.4%	87	2.8%
	Ntv Hawaiian/Pac. Islander	2	5.3%	1	2.4%	1	2.0%	1	1.9%
	Other	18	9.3%	21	11.5%	21	11.2%	18	9.2%
	Unknown	136	26.0%	125	22.4%	114	21.3%	166	31.0%
	White	3,566	11.9%	3,431	11.0%	3,422	11.3%	3,426	11.6%

¹ Unique Served: All duplicate records are removed.² Percentage Formula: n=Unique Served/d=Unique Enrolled.

Data Source: DSSURS – Data Pulled: 10/8/07

C:\MHO Utilization Databases\Utilization Qtrly work\Contract 0107-1207\Report 1 - 0406-0307 - pulled 10-8-07\0406-0307 Qtr Report.doc

TABLE 6: UNIQUE¹ SERVED BY MHO/ETHNICITY AND PERCENTAGE² OF ENROLLEES SERVED (*continued*)

MHO	Race Description	2006				2007			
		2 nd Qtr	Rate	3 rd Qtr	Rate	4 th Qtr	Rate	1 st Qtr	Rate
MVBCN	Am. Indian/Alaskan Ntv	132	11.0%	127	10.4%	113	10.0%	119	11.1%
	Asian or Pac. Islanders	48	5.1%	46	4.8%	42	4.5%	49	5.4%
	Black	97	9.2%	85	7.6%	96	8.8%	96	9.1%
	Hispanic	317	1.7%	302	1.5%	313	1.6%	122	0.6%
	Ntv Hawaiian/Pac. Islander	11	5.4%	5	2.1%	8	3.5%	3	1.3%
	Other	13	4.9%	8	3.0%	11	4.5%	7	2.8%
	Unknown	71	15.0%	80	14.5%	81	14.6%	334	57.9%
	White	4,249	8.5%	4,289	8.3%	4,237	8.5%	4,283	8.7%
Verity	Am. Indian/Alaskan Ntv	216	15.1%	215	14.4%	217	15.9%	223	17.8%
	Asian or Pacific Islanders	553	9.8%	543	9.4%	541	9.6%	541	9.8%
	Black	975	7.9%	977	7.6%	1,024	8.1%	1,049	8.4%
	Hispanic	254	2.1%	262	2.1%	270	2.1%	67	0.5%
	Ntv Hawaiian/Pac. Islander	2	1.3%	4	2.0%	4	1.9%	3	1.6%
	Other	31	5.7%	24	4.2%	23	4.2%	13	2.5%
	Unknown	87	15.4%	104	16.4%	123	19.1%	390	60.1%
	White	4,272	10.5%	4,127	9.8%	4,269	10.5%	4,509	11.4%
Washington	Am. Indian/Alaskan Ntv	29	10.6%	31	11.0%	27	11.1%	27	12.2%
	Asian or Pacific Islanders	128	6.6%	124	6.3%	118	6.2%	122	6.4%
	Black	119	7.8%	109	6.9%	112	7.4%	128	8.7%
	Hispanic	181	1.6%	149	1.3%	155	1.3%	49	0.4%
	Ntv Hawaiian/Pac. Islander	4	3.4%	2	1.4%	5	3.3%	5	3.8%
	Other	16	5.6%	19	6.8%	16	5.8%	6	2.2%
	Unknown	79	23.0%	74	19.7%	85	24.9%	211	59.1%
	White	1,841	10.7%	1,743	9.9%	1,710	10.1%	1,702	10.5%
Total Served	Am. Indian/Alaskan Ntv	758	9.3%	736	8.8%	708	9.3%	726	10.7%
	Asian or Pacific Islanders	829	7.6%	819	7.3%	804	7.4%	812	7.6%
	Black	1,479	7.9%	1,443	7.3%	1,498	7.7%	1,565	8.2%
	Hispanic	1,307	1.9%	1,203	1.7%	1,166	1.7%	470	0.7%
	Ntv Hawaiian/Pac. Islander	31	3.9%	22	2.4%	31	3.2%	30	3.3%
	Other	109	5.7%	104	5.4%	99	5.4%	67	3.7%
	Unknown	614	18.3%	662	17.7%	752	20.5%	1,741	47.0%
	White	24,148	9.1%	23,446	8.6%	23,379	8.8%	23,784	9.2%

¹ Unique Served: All duplicate records are removed.² Percentage Rate Formula: n=Unique Served/d=Unique Enrolled.

FIGURE 4: TOTAL ALL QUARTERS: UNIQUE ENCOUNTERS BY DIAGNOSTIC GROUPS

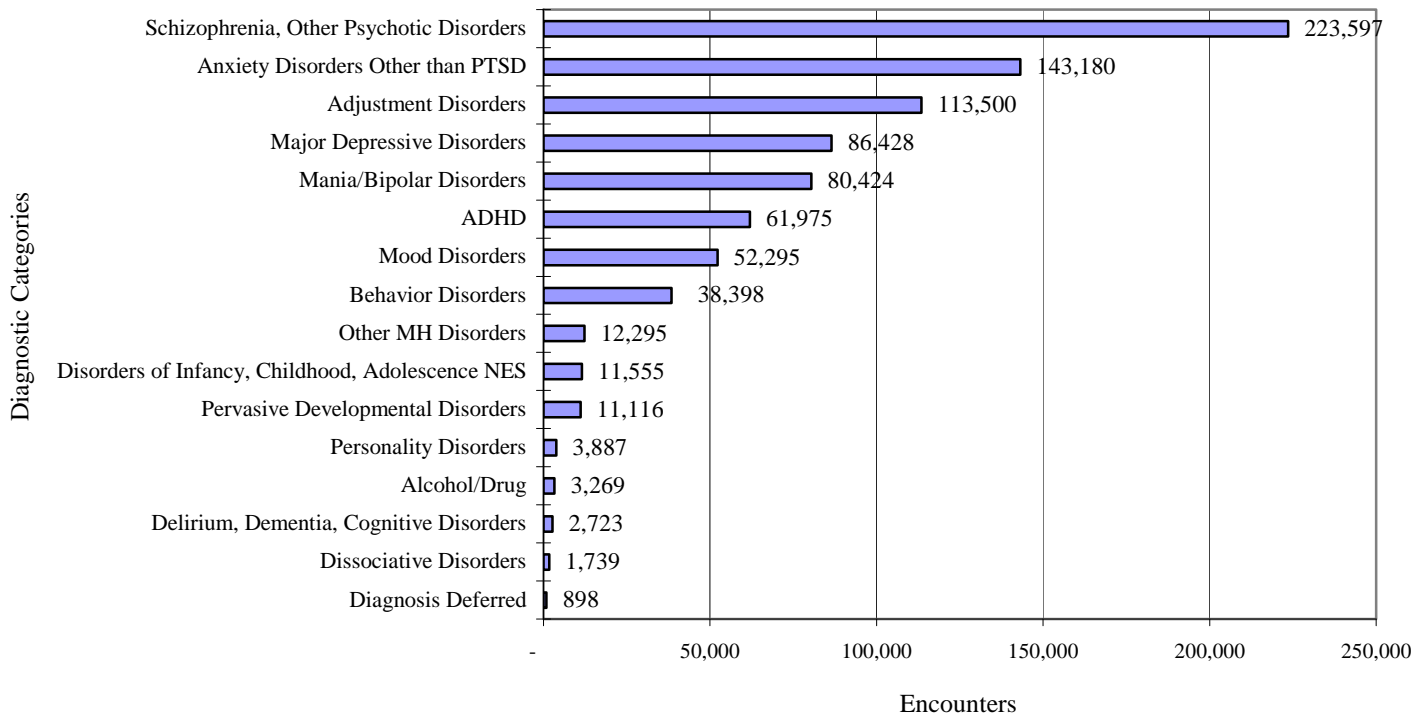


TABLE 7: UNIQUE¹ SERVED ENCOUNTERS² BY MHO/DIAGNOSTIC GROUPS IN ASCENDING ORDER BASED ON THE FIRST QUARTER 2007

MHO Contractors	Diagnostic Group	2006			2007
		2 nd Qtr	3 rd Qtr	4 th Qtr	1 st Qtr
Total Encounters	Schizophrenia, Other Psychotic Disorders	54,055	55,258	55,713	58,571
	Anxiety Disorders Other than PTSD	35,421	34,179	35,660	37,920
	Adjustment Disorders	30,113	25,939	27,872	29,576
	Mania/Bipolar Disorders	19,369	19,606	19,856	21,593
	Major Depressive Disorders	22,605	21,590	21,024	21,209
	ADHD	15,345	13,629	15,319	17,682
	Mood Disorders	13,493	12,471	12,701	13,630
	Behavior Disorders	9,925	8,824	9,751	9,898
	Other MH Disorders	3,186	2,849	3,056	3,204
	Pervasive Developmental Disorders	2,684	2,602	2,750	3,080
	Disorders of Infancy, Childhood, Adolescence NES	2,717	2,948	2,834	3,056
	Personality Disorders	861	976	994	1,056
	Alcohol/Drug	947	910	748	664
	Delirium, Dementia, Cognitive Disorders	793	638	628	664
	Dissociative Disorders	477	449	425	388
	Diagnosis Deferred	297	223	226	152

¹ Unique Served: All duplicate records are removed.

² Encounters: A contact or admission for covered services to OHP Member – can be 1 or more per member.

Data Source: DSSURS – Data Pulled: 10/8/07

TABLE 8: UNIQUE MEMBERS SERVED PER MONTH

MHO Contractors	2006									2007		
	Apr	May	Jun	Jul	Aug	Sep	Oct	Nov	Dec	Jan	Feb	Mar
ABHA	1,295	1,328	1,317	1,256	1,306	1,196	1,332	1,283	1,153	1,276	1,225	1,251
Clackamas	1,271	1,258	1,250	1,176	1,305	942	1,048	1,244	1,216	986	1,333	1,405
FamilyCare	329	330	353	356	389	385	398	375	341	370	383	390
GOBHI	1,721	1,649	1,651	1,495	1,567	1,493	1,590	1,505	1,417	1,586	1,538	1,627
JBH	3,176	3,343	3,241	3,023	3,229	3,133	3,346	3,227	2,694	3,214	3,208	3,356
LaneCare	3,010	3,116	3,021	2,821	2,948	2,804	3,024	2,979	2,756	2,952	3,039	3,097
MVBCN	3,429	3,361	3,437	3,347	3,491	3,396	3,575	3,503	3,366	3,568	3,358	3,443
Verity	4,426	4,709	4,622	4,385	4,658	4,499	4,860	4,884	4,550	4,866	4,852	5,404
Washington	1,672	1,671	1,674	1,519	1,644	1,517	1,665	1,610	1,500	1,599	1,601	1,650
Total	20,329	20,765	20,566	19,378	20,537	19,365	20,838	20,610	18,993	20,417	20,537	21,623
FFS	496	519	508	550	548	561	571	535	499	481	485	474

HOSPITAL DATA



TABLE 9: UNIQUE¹ HOSPITAL ADMISSIONS PER 1,000 MEMBERS² ENROLLED

MHO Contractors	2006			2007
	2 nd Qtr	3 rd Qtr	4 th Qtr	1 st Qtr
ABHA	1.26	1.72	1.52	1.63
Clackamas	1.39	1.78	1.53	1.31
FamilyCare	3.25	4.11	2.47	2.66
GOBHI	0.66	0.58	0.69	0.45
JBH	2.58	2.43	1.79	1.77
LaneCare	2.95	2.64	2.43	2.26
MVBCN	1.01	0.95	0.76	0.76
Verity	2.94	2.77	2.45	2.82
Washington	2.78	1.53	1.79	1.86
Totals	2.08	1.95	1.67	1.70

(n=Total Admissions/d=Unique Enrolled per 1,000 members)

TABLE 10: UNIQUE HOSPITAL ADMISSIONS: AGE GROUPS PER 1,000 MEMBERS ENROLLED

MHO Contractors	Age Group	2006			2007
		2 nd Qtr	3 rd Qtr	4 th Qtr	1 st Qtr
ABHA	0-17	0.5	0.2	0.3	0.3
	18-64	2.6	4.5	3.9	4.1
	65+	0.6	0.0	0.0	0.6
Clackamas	0-17	0.2	0.3	0.7	0.6
	18-64	3.5	4.8	3.4	3.0
	65+	0.9	0.0	0.0	0.0
FamilyCare	0-17	1.7	0.9	0.6	1.1
	18-64	5.7	9.1	5.5	5.1
	65+	0.0	0.0	0.0	2.2
GOBHI	0-17	0.3	0.1	0.2	0.1
	18-64	1.4	1.4	1.6	1.3
	65+	0.0	0.4	0.4	0.0
JBH	0-17	1.0	0.8	0.6	0.6
	18-64	5.0	4.9	3.6	3.7
	65+	0.2	0.9	0.4	0.2

(n=Total Admissions/d=Unique Enrolled per 1,000 members)

¹ Unique: All duplicate records are removed.² Per 1,000 members is the unique number enrolled divided by 1,000

TABLE 10: UNIQUE¹ HOSPITAL ADMISSIONS BY AGE GROUPS PER 1,000 MEMBERS² ENROLLED (*continued*)

MHO Contractors	Age Group	2006			2007
		2 nd Qtr	3 rd Qtr	4 th Qtr	1 st Qtr
LaneCare	0-17	0.4	0.4	0.1	0.2
	18-64	5.8	5.8	5.5	5.0
	65+	4.5	0.0	2.4	2.4
MVBCN	0-17	0.3	0.2	0.1	0.0
	18-64	2.1	2.4	2.0	2.3
	65+	2.0	0.7	0.4	0.4
Verity	0-17	1.0	0.6	0.8	1.0
	18-64	6.1	6.1	5.3	6.1
	65+	1.1	1.7	0.9	0.9
Washington	0-17	0.9	0.5	0.8	0.8
	18-64	7.7	4.0	4.6	4.7
	65+	0.4	0.7	0.4	1.5
Total	0-17	0.6	0.4	0.5	0.5
	18-64	4.5	4.6	3.8	4.0
	65+	1.1	0.8	0.6	0.7

(n=Total Admissions/d=Unique Enrolled per 1,000 members)

TABLE 11: AVERAGE HOSPITAL DAYS OF SERVICE

MHO Contractors	2006			2007
	2 nd Qtr	3 rd Qtr	4 th Qtr	1 st Qtr
ABHA	11.5	4.9	7.2	5.8
Clackamas	11.7	11.0	10.3	6.2
FamilyCare	8.2	5.6	5.6	6.1
GOBHI	8.5	6.4	10.3	5.8
JBH	5.4	6.3	4.4	3.5
LaneCare	8.6	8.8	10.0	11.1
MVBCN	10.1	12.2	11.6	10.2
Verity	9.3	8.4	7.9	9.2
Washington	7.8	9.7	9.4	8.2
Total	8.4	8.2	8.1	7.8

n=Sum Days of Service/d=Total Discharges

¹ Unique: All duplicated records are removed² Per 1,000 members is the unique number enrolled divided by 1,000

TABLE 12: AVERAGE HOSPITAL DAYS BY MHO/AGE GROUP

MHO Contractors	Age Groups	2006			2007
		2 nd Qtr	3 rd Qtr	4 th Qtr	1 st Qtr
ABHA	0-17	14.80	5.75	5.40	6.00
	18-64	11.22	4.85	7.44	5.76
	65+	4.00	N/A	N/A	8.00
Clackamas	0-17	7.00	14.00	6.78	5.82
	18-64	12.83	10.65	11.41	6.36
	65+	5.50	N/A	N/A	N/A
FamilyCare	0-17	7.10	6.50	5.40	5.86
	18-64	8.59	5.44	5.68	6.00
	65+	N/A	N/A	N/A	10.00
GOBHI	0-17	9.40	4.00	8.00	5.50
	18-64	8.19	6.80	10.44	5.86
	65+	N/A	3.00	17.00	N/A
JBH	0-17	6.37	7.52	5.92	4.86
	18-64	5.18	6.00	4.07	3.21
	65+	2.00	9.75	2.50	0.00
LaneCare	0-17	9.38	7.50	6.00	7.75
	18-64	7.94	8.97	10.17	10.59
	65+	13.30	N/A	8.20	21.20
MVBCN	0-17	8.27	12.22	4.40	11.00
	18-64	10.29	11.84	12.07	10.18
	65+	11.13	16.75	19.00	11.00
Verity	0-17	7.84	5.65	5.67	7.23
	18-64	9.32	8.58	8.26	9.31
	65+	15.88	13.11	8.86	17.57
Washington	0-17	8.56	7.18	7.59	8.63
	18-64	7.61	10.40	10.11	7.84
	65+	N/A	9.33	10.00	9.67
Totals	0-17	7.92	7.58	6.17	6.75
	18-64	8.30	8.17	8.46	7.71
	65+	12.20	12.14	9.06	14.90

n=Sum Days of Service/d=Total Discharges

n/a=no discharges within that quarter/age group

TABLE 13: PERCENT OF HOSPITAL RE-ADMISSION WITHIN 30 DAYS

MHO Contractors	2006			2007
	2 nd Qtr	3 rd Qtr	4 th Qtr	1 st Qtr
ABHA	9.1%	11.1%	9.1%	5.3%
Clackamas	11.4%	11.3%	10.5%	16.7%
FamilyCare	10.3%	21.3%	6.7%	14.3%
GOBHI	9.5%	5.9%	4.3%	0.0%
JBH	10.7%	14.9%	9.3%	13.6%
LaneCare	8.5%	15.5%	6.7%	10.7%
MVBCN	2.8%	8.8%	13.3%	4.9%
Verity	10.2%	12.1%	13.3%	16.4%
Washington	6.0%	16.1%	23.8%	10.5%
Total	8.9%	13.5%	11.6%	12.4%

n=Unique readmissions within 30 days/d=unique discharges

TABLE 14: TOTAL HOSPITAL RE-ADMISSION WITHIN 180 DAYS

MHO Contractors	2006			2007
	2 nd Qtr	3 rd Qtr	4 th Qtr	1 st Qtr
ABHA	12.1%	20.0%	22.7%	18.4%
Clackamas	20.0%	11.3%	18.4%	30.6%
FamilyCare	12.8%	34.0%	26.7%	32.1%
GOBHI	9.5%	11.8%	21.7%	25.0%
JBH	14.2%	30.4%	25.4%	26.3%
LaneCare	10.4%	28.9%	22.2%	18.7%
MVBCN	4.2%	14.7%	30.0%	14.8%
Verity	11.6%	25.2%	31.1%	33.3%
Washington	11.9%	26.8%	33.3%	22.8%
Total	11.8%	24.9%	27.1%	26.3%

n=Unique readmissions within 180 days/d=unique discharges

FIGURE 5: TOTAL SEEN BY OUTPATIENT WITHIN 7 DAYS OF HOSPITAL DISCHARGE
 (All re-admissions are included in the hospital discharge numbers. All Mental Health Diagnosis is included in the outpatient numbers.)
 (n=number seen within 7 days/d= hospital discharges.)

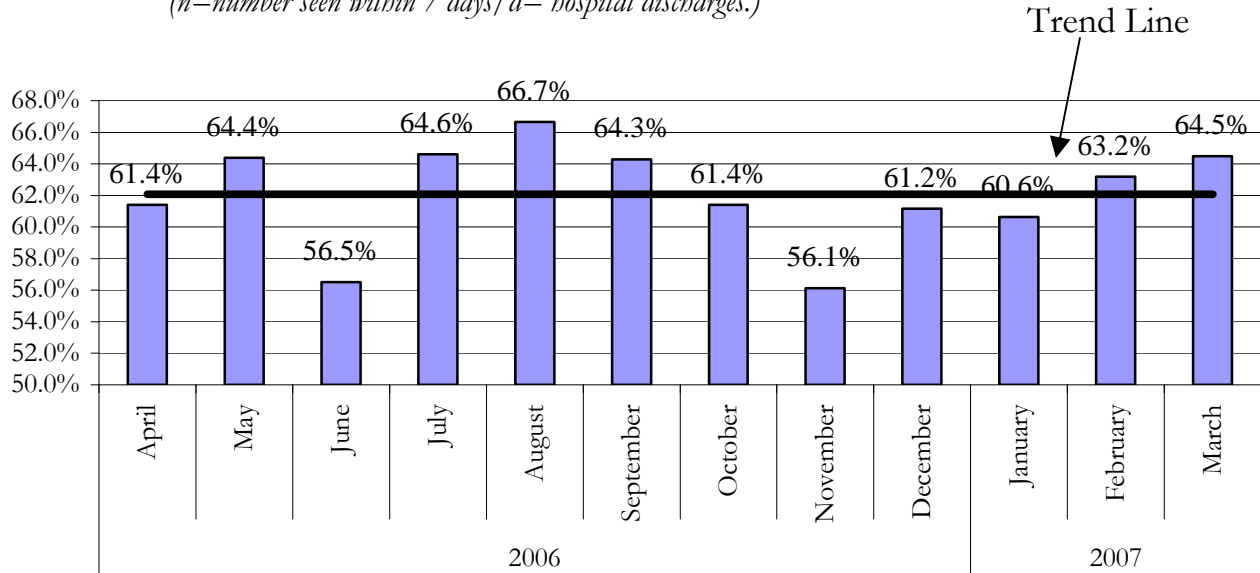


TABLE 15: SEEN BY OUTPATIENT WITHIN 7 DAYS OF HOSPITAL DISCHARGE
 (All re-admissions are included in the hospital discharge numbers. All mental health diagnoses are included in the outpatient numbers).

MHO Contractors	2006			2007
	2 nd Qtr	3 rd Qtr	4 th Qtr	1 st Qtr
ABHA	78.8%	88.9%	59.1%	73.7%
Clackamas	62.9%	62.3%	55.3%	77.8%
FamilyCare	15.4%	25.5%	6.7%	28.6%
GOBHI	61.9%	70.6%	52.2%	0.0%
JBH	63.9%	64.6%	55.9%	61.0%
LaneCare	49.1%	68.0%	52.2%	54.7%
MVBCN	57.7%	67.6%	66.7%	45.9%
Verity	62.5%	63.1%	62.2%	68.6%
Washington	65.5%	60.7%	61.9%	56.1%
Total	59.2%	63.6%	56.5%	61.6%

(n=Seen Within 7 days/d=Hospital Discharges)

GLOSSARIES



MHO UTILIZATION REPORT GLOSSARY

ADDICTIONS AND MENTAL HEALTH DIVISION (AMH):

The division office of DHS responsible for the administration of mental health services for the State of Oregon.

DIAGNOSIS CATEGORY:

Diagnosis categories are defined by the grouping of diagnoses in the most recent version of the American Psychiatric Association's Diagnostic and Statistical Manual (DSM).

ELIGIBLE:

An individual eligible for services under the OHP, but may not be enrolled into an MHO. Includes enrolled and fee-for-service.

ENCOUNTER:

An outpatient contact or Acute Inpatient Hospital Psychiatric Care admission for Covered Services provided to an OHP Member.

ENROLLED (ENROLLEE):

Eligible for the Oregon Health Plan (OHP) and enrolled in an MHO.

FEE-FOR-SERVICE (FFS):

Individuals who are eligible for the OHP, but are not enrolled with an MHO. This is also known as fee-for-service (FFS) or an "open card".

MENTAL HEALTH ORGANIZATION (MHO):

A Prepaid Health Plan under contract with DHS to provide Covered Services under the OHP Medicaid Demonstration Project and State Children's Health Insurance Program (SCHIP). MHOs can be FCHPs, CMHPs, or private MHOs or combinations thereof.

OREGON HEALTH PLAN (OHP):

Oregon's health care reform effort consisting of a Medicaid Demonstration Project, State Children's Health Insurance Program, an individual insurance program for persons excluded from health insurance coverage due to pre-existing health conditions, and a group insurance program for small businesses. One objective of this reform effort includes universal coverage for Oregonians. In the context of this report, OHP refers to all individuals on FFSMHO Utilization Report Glossary

MHO UTILIZATION REPORT GLOSSARY *(Continued)*

PERCENT ENROLLEES SERVED:

This is a general measure of access, but more related to utilization of services. It is a percentage calculated by summing the unique enrollees seen during a given time period and dividing that number by the total enrollees for that time period. For example, if there is 10,000 enrollees statewide in a given month and during that same month 500 of those enrollees receive services, the percent of enrollees served is 5%.

PERCENTAGE RATE:

A percent of the total enrollees that received services within a given time period.

SERVICE CATEGORY:

Service category is a descriptive grouping of service codes (BA, ECC, and CPT) that are similar procedurally.

UNIQUE SERVED:

Unduplicated number of individuals receiving mental health services.

UNIQUE ENCOUNTERS:

Unduplicated services received by an individual(s) within a specific time period. One individual may have had several services provided – each service would be part of the calculations.

DIAGNOSTIC CATEGORIES GLOSSARY WITH SPECIFIC DSMIV CODES

The following codes include, but are not limited to procedure codes used by service providers within the reporting period for this report.

ADHD:

314; 314.0; 314.00; 314.01; 314.1; 314.9; 314.90

ADJUSTMENT DISORDERS:

309.00; 309.1; 309.2; 309.21; 309.22; 309.23; 309.24; 309.28; 309.29; 309.3; 309.4;
309.40; 309.80; 309.82; 309.83; 309.89; 309.9

ALCOHOL/DRUG:

291.3; 291.4; 291.5; 291.81; 291.89; 291.9; 292.0; 292.11; 292.12; 292.2; 292.84;
292.9; 303.00; 303.01; 303.02; 303.90; 303.91; 303.92; 303.93; 304.00; 304.01;
304.03; 304.10; 304.20; 304.23; 304.3; 304.30; 304.31; 304.33; 304.40; 304.41;
304.42; 304.43; 304.70; 304.71; 304.80; 304.81; 304.83; 304.90; 305.00; 305.01;
305.02; 305.03; 305.1; 305.20; 305.21; 305.22; 305.23; 305.30; 305.40; 305.50;
305.60; 305.61; 305.62; 305.70; 305.71; 305.72; 305.73; 305.90; 305.91

ANXIETY DISORDER OTHER THAN PTSD:

293.84; 300.0; 300.00; 300.01; 300.02; 300.09; 300.10; 300.20; 300.21; 300.22;
300.23; 300.29; 300.3; 308.3; 308.9

BEHAVIOR DISORDERS:

312.00; 312.01; 312.02; 312.30; 312.31; 312.32; 312.34; 312.39; 312.4; 312.8;
312.80; 312.81; 312.82; 312.89; 312.9; 313.69; 313.81

DELIRIUM, DEMENTIA, COGNITIVE DISORDERS:

290.0; 290.10; 290.11; 290.12; 290.13; 290.20; 290.21; 290.3; 290.40; 290.41;
290.42; 290.43; 291.0; 291.2; 292.82; 292.83; 292.89; 293.0; 293.84; 294.0; 294.1;
294.10; 294.11; 294.8; 294.9; 294.90; 310.0; 310.1; 310.10

DIAGNOSIS DEFERRED:

799.9

DIAGNOSTIC CATEGORIES GLOSSARY
WITH SPECIFIC DSM-IV CODES
(*CONTINUED*)

DISORDERS OF INFANCY, CHILDHOOD, ADOLESCENCE NES:

299.10; 307.0; 307.20; 307.22; 307.23; 307.3; 307.6; 307.7; 307.9; 313.0; 313.23;
313.82; 313.89; 313.9; 315.00; 315.31; 315.32; 315.39; 315.4; 315.9; 317.0; 318.0;
318.1; 318.2; 319.0; 787.6

DISSOCIATIVE DISORDERS:

300.12; 300.13; 300.14; 300.15; 300.6

MAJOR DEPRESSIVE DISORDERS:

296.2; 296.20; 296.21; 296.22; 296.23; 296.24; 296.25; 296.26; 296.3; 296.30;
296.31; 296.32; 296.33; 296.34; 296.35; 296.36

MANIA/BIPOLAR DISORDERS:

296; 296.0; 296.00; 296.01; 296.02; 296.03; 296.04; 296.05; 296.06; 296.09; 296.10;
296.11; 296.12; 296.13; 296.15; 296.4; 296.40; 296.41; 296.42; 296.43; 296.44;
296.45; 296.46; 296.50; 296.51; 296.52; 296.53; 296.54; 296.55; 296.56; 296.6;
296.60; 296.61; 296.62; 296.63; 296.64; 296.65; 296.66; 296.7; 296.70; 296.8;
296.80; 296.81; 296.82; 296.89

MOOD DISORDERS WITHOUT BEHAVIOR, MANIA AND BIPOLAR:

293.83; 296.9; 296.90; 296.99; 300.4; 300.40; 301.13; 311; 311.0; 311.00

OTHER MENTAL HEALTH (MH) DISORDERS:

293.89; 293.9; 296.74; 300.11; 300.16; 300.19; 300.7; 300.81; 300.82; 300.9; 302.2;
302.4; 302.70; 302.73; 302.9; 305.93; 306.3; 307.1; 307.42; 307.44; 307.45; 307.46;
307.47; 307.50; 307.51; 307.52; 307.53; 307.59; 307.80; 307.89; 307.9; 308.0;
308.1; 308.2; 309.29; 316; 780.52; 780.59; 968.9; 995.2; 995.50; 995.52; 995.53;
995.54; 995.81; V61.0; V61.10; V61.20; V61.21; V61.8; V61.9; V62.81; V62.82;
V62.89; V62.9; V65.40; V71.01; V71.02; V71.09

PERSONALITY DISORDERS:

301.0; 301.10; 301.12; 301.20; 301.22; 301.3; 301.4; 301.50; 301.6; 301.7; 301.81;
301.82; 301.84; 301.89; 301.9; 301.83

DIAGNOSTIC CATEGORIES GLOSSARY
WITH SPECIFIC DSMIV CODES
(Continued)

PERVASIVE DEVELOPMENTAL DISORDERS:

299.0; 299.00; 299.80

POST-TRAUMATIC STRESS DISORDER (PTSD):

309.81

SCHIZOPHRENIA, OTHER PSYCHOTIC DISORDERS:

293.81; 293.82; 295.0; 295.00; 295.02; 295.03; 295.10; 295.11; 295.12; 295.13;
295.14; 295.15; 295.20; 295.22; 295.23; 295.24; 295.3; 295.30; 295.31; 295.32;
295.33; 295.34; 295.35; 295.40; 295.42; 295.43; 295.45; 295.50; 295.60; 295.61;
295.62; 295.64; 295.65; 295.7; 295.70; 295.71; 295.73; 295.74; 295.75; 295.80;
295.82; 295.9; 294.90; 295.91; 295.92; 295.93; 295.94; 295.95; 297.1; 297.2; 297.3;
297.30; 297.9; 298.0; 298.8; 298.9; 298.90; 299.01

SERVICE CATEGORIES GLOSSARY WITH SPECIFIC PROCEDURES CODES

ALTERNATIVES TO INPATIENT HOSPITALIZATION:

H0035; H2013

ASSERTIVE COMMUNITY TREATMENT:

H0039

ASSESSMENT & EVALUATION:

90801; 90802; 96100; 99090; 99214; 99222; 99223; 99231; 99232; 99233; 99238;
99239; BA008; BA010; BA011; H0002; H0031

CASE MANAGEMENT:

99371; BA046; BA047; BA147; T1016

CHILD & FAMILY TEAM MEETINGS:

H0032

CONSULTATION:

90882; 90887; 99255; BA017

CRISIS INTERVENTION:

S9484

FAMILY THERAPY:

90846; 90849; BA013; BA016

GROUP THERAPY:

90853; 90857; BA015; BA115

INDIVIDUAL THERAPY:

90804; 90805; 90806; 90807; 90808; 90809; 90810; 90811; 90812; 90813; 90814;
90815; BA011; BA111; H0004

INTERPRETIVE SERVICES:

T1013

ISA - AE:

H0018

SERVICE CATEGORIES GLOSSARY WITH SPECIFIC PROCEDURES CODES

(Continued)

ISA - DAY TREATMENT:

ECC13; H0037; H2012

ISA - MST:

H2033

ISA - RESIDENTIAL:

ECC11; H0019

LEVEL OF NEED DETERMINATION:

T1023

MEDICATION MANAGEMENT:

90862; BA019; BA026; BA126; H0033; H0034; H2010

OUTPATIENT THERAPY:

90847; 90849; 90899; ECC50; H0045; H2011; H2023; S9484; T1005

RESPIRE CARE:

ECC20; H0045; S5151; S9125

SKILLS TRAINING:

G0176; G0177; H2014; H2027; H2032

SUB-ACUTE CARE:

H2013; H2023

SUPPORTIVE DAY PROGRAM:

H0036

TREATMENT FOSTER CARE:

S5145; S5146

WRAPAROUND SERVICES:

H0038; H2021; H2022; H2027