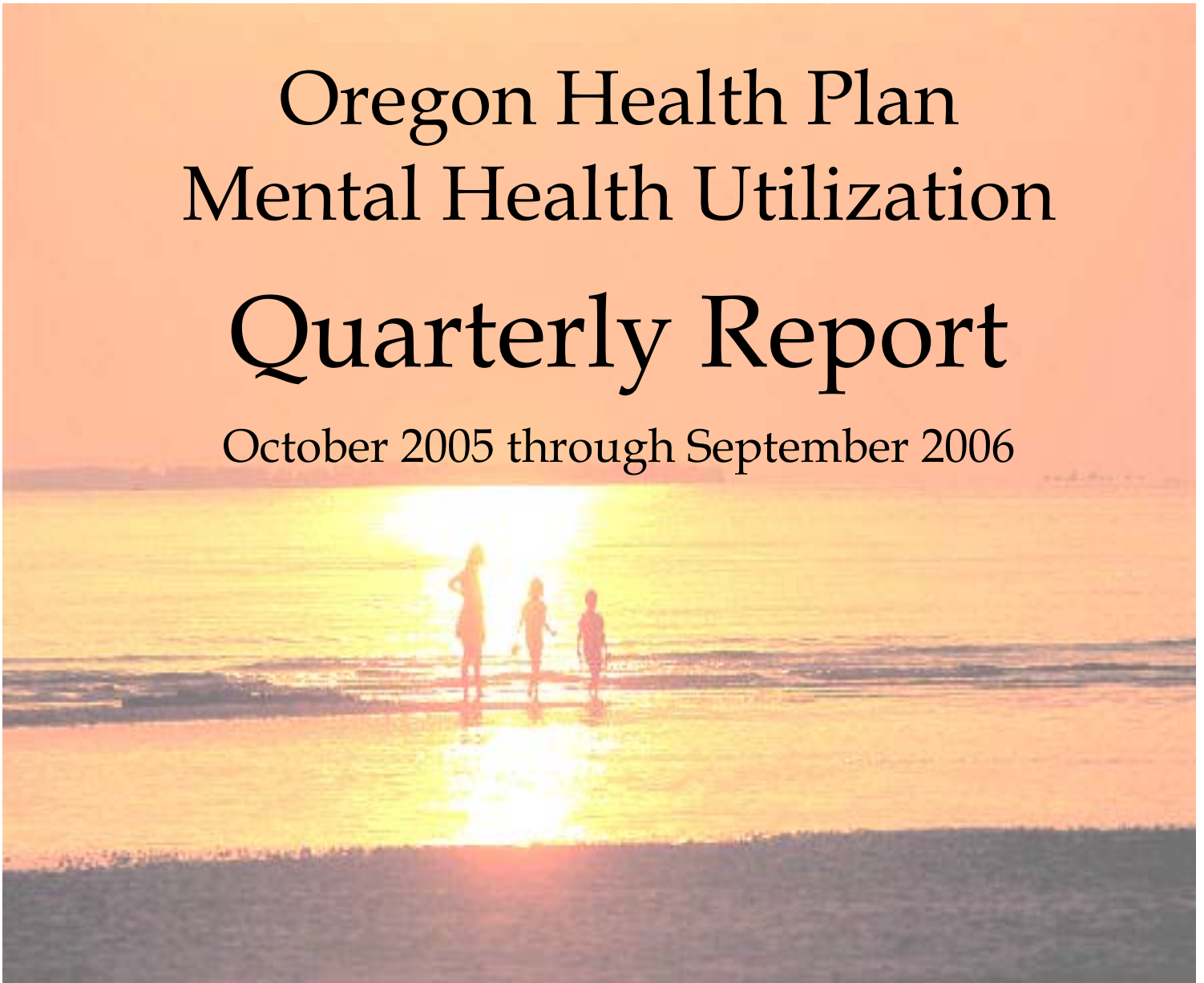


Department of Human Services
Addictions and Mental Health Division

Oregon Health Plan Mental Health Utilization Quarterly Report

October 2005 through September 2006



Report Produced by
Program Analysis and Evaluation Team
APRIL 2007

EXECUTIVE SUMMARY
REPORT ON OREGON HEALTH PLAN (OHP)
UTILIZATION AND ENROLLMENT FOR
MENTAL HEALTH SERVICES:
OCTOBER 2005 THROUGH SEPTEMBER 2006

The Mental Health Organization (MHO) Utilization Quarterly Report for the period of October 1, 2005 through September 30, 2006, contains enrollment, unique served and hospitalization data. The data for this report were pulled April 6, 2007. All information came from the Division of Medical Assistance Programs' (DMAP) Decision Support/Surveillance and Utilization Review System (DSSURS) and is comparable to the report released in February 2007.

Population

- This report reflects only Medicaid members who are eligible, enrolled, and received mental health services.
- The acute care admission population is any enrolled Medicaid member who was admitted for inpatient psychiatric treatment.
- Those who are receiving mental health services and alcohol and drug treatment are included in this report.

Limitations

- This report does not include tests of the statistical significance of apparent differences among providers or across time periods.
- The report is a “snap-shot” in time for the specific report being created and is comparable to the report released in February 2007.
- Acute hospitalization data includes and is not limited to transfers from one facility to another and/or re-admitted within a 24-hour time frame.
- There is a 180-day lag between the times a service is delivered and the time the services is contractually required to be billed.

Formula

- The calculations for the unique enrollees and/or served is dividing the number of total enrollees by the number served within the same time period.
- The penetration rate, or percentage rate, is a general measure of access, but more related to utilization of services.

Report Schedule

This report is created on a quarterly basis.

TABLE OF CONTENTS

The format and contents are constructed as follows:

- Figures are used to illustrate trends in statewide data.
- Tables are used to summarize quarterly data at the MHO level. Some tables include FFS and All Eligibles.



Executive Summary	i
-------------------------	---

Enrollment Data:

Table 1: Unique Members Enrolled by MHO	1
Figure 1: Total Unique Members Enrolled by Age Groups	1
Table 2: Unique Members Enrolled by Age Groups/MHO	2
Enrollment Numbers per Month	3

Served Data:

Table 3: Unique Members Served by MHO and Percentage Rate	4
Figure 2: Total Unique Members Served by Age Groups	4
Table 4: Unique Served by MHO/Age Group and Percentage Rate	5
Figure 3: Total Unique Served by Ethnicity	6
Table 5: Unique Served by MHO/Ethnicity and Percentage Rate	6
Figure 4: Total All Quarters: Unique Encounters by Diagnostic Groups	9
Table 6: Unique Served Encounters by MHO/Diagnostic Groups	9
Unique Members Served per Month	10

Hospital Data:

Table 7: Unique Hospital Admissions per 1,000 Members Enrolled	11
Table 8: Unique Hospital Admissions: Age Groups per 1,000 Members Enrolled	11
Table 9: Average Hospital Days of Service	12
Table 10: Average Hospital Days by MHO/Age Group	13
Table 11: Percent of Hospital Re-Admission within 30 days	14
Table 12: Total Hospital Re-Admission within 180 days	14
Figure 5: Total Seen by Outpatient within 7 Days of Hospital Discharge	15
Table 13: Seen by Outpatient within 7 Days of Hospital Discharge	15

Glossaries:

MHO Utilization Report Glossary	16
Diagnostic Categories Glossary	18
Service Categories Glossary	21

ENROLLMENT DATA

- ❖ Enrolled: Eligible for OHP and enrolled in an MHO
- ❖ Eligibles: Both Enrolled and FFS
- ❖ Fee-For-Service (FFS): Eligible for OHP and NOT enrolled with an MHO (Open Card)



TABLE 1: UNIQUE MEMBERS ENROLLED BY MHO

MHO Contractors	2005		2006					
	4 th Qtr	% Enrolled	1 st Qtr	% Enrolled	2 nd Qtr	% Enrolled	3 rd Qtr	% Enrolled
ABHA	26,936	7.1%	26,743	7.1%	26,870	7.1%	27,963	7.1%
Clackamas	26,275	7.0%	25,818	6.9%	25,891	6.9%	27,041	6.9%
FamilyCare	11,130	2.9%	10,983	2.9%	10,858	2.9%	11,656	3.0%
GOBHI	31,386	8.3%	31,715	8.4%	31,888	8.5%	33,022	8.4%
JBH	65,537	17.4%	65,275	17.4%	65,050	17.3%	66,994	17.1%
LaneCare	35,934	9.5%	35,672	9.5%	35,739	9.5%	37,260	9.5%
MVBCN	72,776	19.3%	72,627	19.3%	73,307	19.4%	75,938	19.4%
Verity	74,331	19.7%	73,910	19.7%	73,943	19.6%	76,857	19.6%
Washington	33,161	8.8%	32,941	8.8%	33,426	8.9%	34,502	8.8%
Total Enrolled	377,466	100.0%	375,684	100.0%	376,972	100.0%	391,233	100.0%

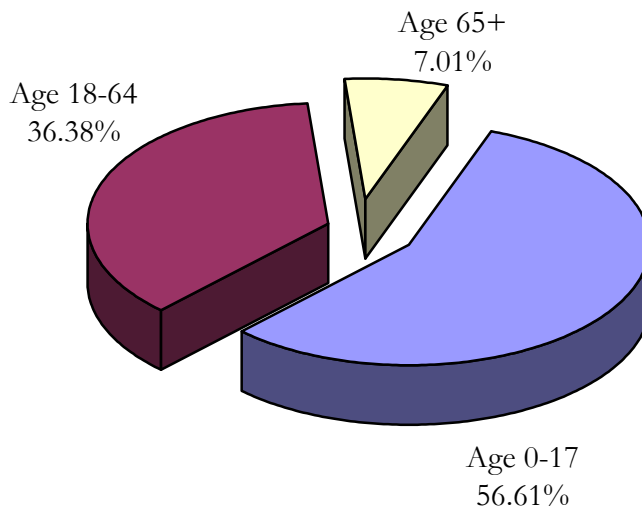
n=Unique Enrolled/d=Total Enrolled

	4 th Qtr	% Enrolled	1 st Qtr	% Enrolled	2 nd Qtr	% Enrolled	3 rd Qtr	% Enrolled
Total Enrolled	377,466	90.0%	375,684	89.4%	376,972	89.8%	391,233	94.0%
All Eligibles ²	419,385	100.0%	420,407	100.0%	419,583	100.0%	416,031	100.0%
FFS ³	41,919	10.0%	44,723	10.6%	42,611	10.2%	24,798	6.0%

n=Total Enrolled/d=All Eligibles

n=FFS/d=All Eligibles

FIGURE 1: TOTAL UNIQUE MEMBERS ENROLLED BY AGE GROUPS



² Eligibles: Both Enrolled and FFS

³ Fee-For-Service (FFS): Eligible for OHP and NOT enrolled with an MHO (Open Card)

TABLE 2: UNIQUE MEMBERS Enrolled¹ by Age Groups & Percentage by MHO Total

MHO Contractors	Age Groups	2005		2006					
		4 th Qtr	% by MHO Qtr Total ²	1 st Qtr	% by MHO Qtr Total	2 nd Qtr	% by MHO Qtr Total	3 rd Qtr	% by MHO Qtr Total
ABHA	0-17	15,059	55.9%	15,172	56.7%	15,429	57.4%	16,410	58.7%
	18-64	10,098	37.5%	9,826	36.7%	9,715	36.2%	9,816	35.1%
	65 +	1,779	6.6%	1,745	6.5%	1,726	6.4%	1,737	6.2%
Clackamas	0-17	14,841	56.5%	14,769	57.2%	15,072	58.2%	16,035	59.3%
	18-64	9,217	35.1%	8,859	34.3%	8,647	33.4%	8,755	32.4%
	65 +	2,217	8.4%	2,190	8.5%	2,172	8.4%	2,251	8.3%
FamilyCare	0-17	6,154	55.3%	6,082	55.4%	6,082	56.0%	6,650	57.1%
	18-64	4,607	41.4%	4,502	41.0%	4,344	40.0%	4,542	39.0%
	65 +	369	3.3%	399	3.6%	432	4.0%	464	4.0%
GOBHI	0-17	17,735	56.5%	18,238	57.5%	18,571	58.2%	19,554	59.2%
	18-64	11,326	36.1%	11,173	35.2%	11,051	34.7%	11,207	33.9%
	65 +	2,325	7.4%	2,304	7.3%	2,266	7.1%	2,261	6.8%
JBH	0-17	34,114	52.1%	34,364	52.6%	34,781	53.5%	36,466	54.4%
	18-64	26,784	40.9%	26,333	40.3%	25,790	39.6%	26,009	38.8%
	65 +	4,639	7.1%	4,578	7.0%	4,479	6.9%	4,519	6.7%
LaneCare	0-17	18,467	51.4%	18,564	52.0%	18,840	52.7%	20,025	53.7%
	18-64	15,448	43.0%	15,124	42.4%	14,949	41.8%	15,219	40.8%
	65 +	2,019	5.6%	1,984	5.6%	1,950	5.5%	2,016	5.4%
MVBCN	0-17	43,271	59.5%	43,633	60.1%	44,656	60.9%	46,848	61.7%
	18-64	25,020	34.4%	24,539	33.8%	24,266	33.1%	24,582	32.4%
	65 +	4,485	6.2%	4,455	6.1%	4,385	6.0%	4,508	5.9%
Verity	0-17	38,867	52.3%	39,068	52.9%	39,670	53.6%	42,087	54.8%
	18-64	29,030	39.1%	28,437	38.5%	27,914	37.8%	28,338	36.9%
	65 +	6,434	8.7%	6,405	8.7%	6,359	8.6%	6,432	8.4%
Washington	0-17	20,855	62.9%	20,893	63.4%	21,453	64.2%	22,435	65.0%
	18-64	9,719	29.3%	9,464	28.7%	9,388	28.1%	9,404	27.3%
	65 +	2,587	7.8%	2,584	7.8%	2,585	7.7%	2,663	7.7%
Total by Quarter	0-17	209,363	55.5%	210,783	56.1%	214,554	56.9%	226,510	57.9%
	18-64	141,249	37.4%	138,257	36.8%	136,064	36.1%	137,872	35.2%
	65 +	26,854	7.1%	26,644	7.1%	26,354	7.0%	26,851	6.9%

¹ Enrolled: Eligible for OHP and enrolled in an MHO² Percentage formula: n=unique enrolled by age group/d=MHO total enrolled

ENROLLMENT NUMBERS PER MONTH

MHO Contractor	Oct-05	Nov-05	Dec-05	Jan-06	Feb-06	Mar-06	Apr-06	May-06	Jun-06	Jul-06	Aug-06	Sep-06
ABHA	23,652	23,424	23,589	23,653	23,902	23,914	23,902	23,809	23,867	25,031	25,404	24,675
Clackamas	23,111	23,030	23,206	22,886	22,706	22,733	22,795	22,891	22,925	24,213	24,719	23,911
FamilyCare	9,898	9,532	9,428	9,407	9,437	9,382	9,290	9,359	9,390	9,776	10,154	10,240
GOBHI	27,688	27,813	28,176	28,099	28,467	28,296	28,517	28,477	28,485	29,721	30,331	29,349
JBH	57,535	57,962	58,949	58,506	58,694	58,371	58,602	58,374	58,736	60,835	61,897	60,098
LaneCare	32,033	32,398	32,404	32,175	32,399	31,963	32,227	32,228	32,373	33,900	34,421	33,318
MVBCN	65,084	65,127	65,373	65,232	65,404	65,137	65,880	65,677	66,182	68,925	69,579	67,740
Verity	67,254	67,132	67,512	67,267	67,233	66,801	66,604	66,411	67,245	69,533	70,884	68,891
Washington	29,118	28,868	29,005	29,165	29,133	28,946	29,290	29,232	29,669	30,672	31,193	29,976
Monthly Totals	335,373	335,286	337,642	336,390	337,375	335,543	337,107	336,458	338,872	352,606	358,582	348,198

% Monthly Increase/Decrease	-0.03%	0.70%	-0.37%	0.29%	-0.55%	0.46%	-0.19%	0.71%	3.89%	1.67%	-2.98%
-----------------------------	--------	-------	--------	-------	--------	-------	--------	-------	-------	-------	--------

Eligibles	420,868	418,917	418,369	419,815	419,766	421,639	419,878	419,807	419,064	418,014	416,180	413,899
FFS	85,495	83,631	80,727	83,425	82,391	86,096	82,771	83,349	80,192	65,408	57,598	65,701

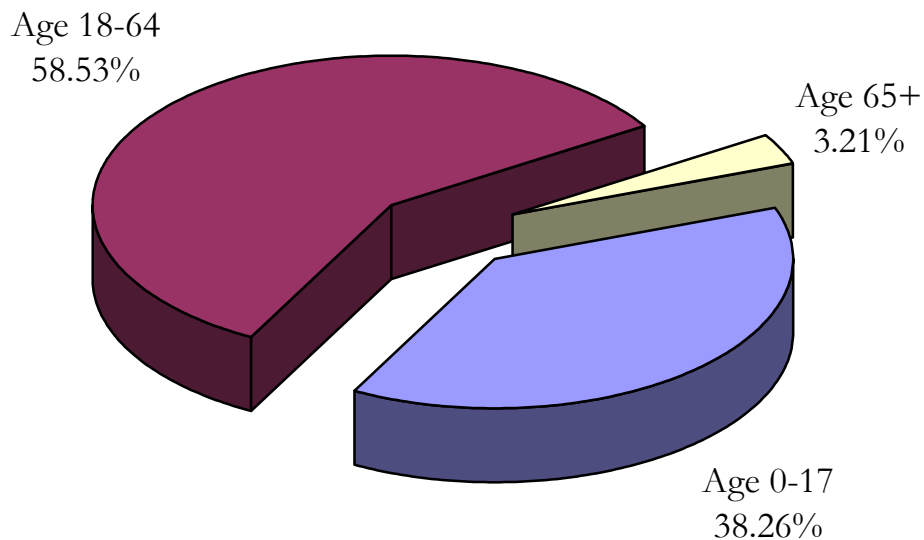
SERVICE DATA



TABLE 3: UNIQUE MEMBERS SERVED BY MHO AND PERCENTAGE RATE²

MHO Contractors	2005		2006					
	4 th Qtr	% Rate	1 st Qtr	% Rate	2 nd Qtr	% Rate	3 rd Qtr	% Rate
ABHA	1,725	6.4%	1,466	5.5%	1,352	5.0%	1,687	6.0%
Clackamas	1,756	6.7%	1,800	7.0%	1,790	6.9%	1,662	6.1%
FamilyCare	532	4.8%	570	5.2%	521	4.8%	536	4.6%
GOBHI	2,415	7.7%	2,494	7.9%	2,550	8.0%	2,281	6.9%
JBH	4,422	6.7%	4,586	7.0%	4,686	7.2%	4,541	6.8%
LaneCare	3,827	10.7%	3,863	10.8%	3,939	11.0%	3,819	10.2%
MVBCN	4,944	6.8%	4,998	6.9%	4,923	6.7%	4,939	6.5%
Verity	6,116	8.2%	6,138	8.3%	6,399	8.7%	6,201	8.1%
Washington	2,087	6.3%	2,263	6.9%	2,414	7.2%	2,256	6.5%
Total Served	27,824	7.4%	28,178	7.5%	28,574	7.6%	27,922	7.1%
FFS	790	1.9%	797	1.8%	808	1.9%	894	3.6%

FIGURE 2: TOTAL UNIQUE MEMBERS SERVED BY AGE GROUPS



² Percentage Rate Formula: n=Unique Served/d=Unique Enrolled.

Data Source: DSSURS – Data pulled: 4/6/07

C:\MHO Utilization Databases\Quarterly Pulls\Contract 0106-1206\1005-0906 - pulled 4-6-07\1005-0906 Qtr Report.doc

TABLE 4: UNIQUE¹ SERVED BY MHO/AGE GROUP AND PERCENTAGE² RATE

MHO Contractors	Age Groups	2005		2006					
		4 th Qtr	Rate	1 st Qtr	Rate	2 nd Qtr	Rate	3 rd Qtr	Rate
ABHA	0-17	677	4.5%	584	3.8%	509	3.3%	618	3.8%
	18-64	999	9.9%	843	8.6%	807	8.3%	1031	10.5%
	65+	45	2.5%	37	2.1%	34	2.0%	34	2.0%
Clackamas	0-17	623	4.2%	637	4.3%	700	4.6%	657	4.1%
	18-64	1075	11.7%	1106	12.5%	1044	12.1%	961	11.0%
	65+	50	2.3%	52	2.4%	41	1.9%	39	1.7%
FamilyCare	0-17	231	3.8%	233	3.8%	247	4.1%	235	3.5%
	18-64	298	6.5%	332	7.4%	268	6.2%	298	6.6%
	65+	1	0.3%	2	0.5%	3	0.7%	3	0.6%
GOBHI	0-17	979	5.5%	1013	5.6%	1094	5.9%	917	4.7%
	18-64	1364	12.0%	1400	12.5%	1376	12.5%	1284	11.5%
	65+	67	2.9%	77	3.3%	76	3.4%	77	3.4%
JBH	0-17	1592	4.7%	1679	4.9%	1835	5.3%	1690	4.6%
	18-64	2718	10.1%	2790	10.6%	2747	10.7%	2731	10.5%
	65+	96	2.1%	109	2.4%	96	2.1%	101	2.2%
LaneCare	0-17	1535	8.3%	1522	8.2%	1555	8.3%	1466	7.3%
	18-64	2213	14.3%	2258	14.9%	2308	15.4%	2271	14.9%
	65+	66	3.3%	65	3.3%	64	3.3%	68	3.4%
MVBCN	0-17	1996	4.6%	1996	4.6%	2015	4.5%	2014	4.3%
	18-64	2793	11.2%	2824	11.5%	2735	11.3%	2752	11.2%
	65+	147	3.3%	161	3.6%	150	3.4%	154	3.4%
Verity	0-17	2048	5.3%	2147	5.5%	2329	5.9%	2151	5.1%
	18-64	3731	12.9%	3656	12.9%	3711	13.3%	3676	13.0%
	65+	311	4.8%	316	4.9%	326	5.1%	330	5.1%
Washington	0-17	767	3.7%	839	4.0%	907	4.2%	860	3.8%
	18-64	1219	12.5%	1310	13.8%	1390	14.8%	1298	13.8%
	65+	96	3.7%	105	4.1%	109	4.2%	87	3.3%
Total Served	0-17	10,448	5.0%	10,650	5.1%	11,191	5.2%	10,608	4.7%
	18-64	16,410	11.6%	16,519	11.9%	16,386	12.0%	16,302	11.8%
	65+	879	3.3%	924	3.5%	899	3.4%	893	3.3%

¹ Unique Served: All duplicate records are removed.

² Percentage Rate Formula: n=Unique Served/d=Unique Enrolled.

Data Source: DSSURS – Data Pulled: 4/6/07

C:\MHO Utilization Databases\Quarterly Pulls\Contract 0106-1206\1005-0906 - pulled 4-6-07\1005-0906 Qtr Report.doc

FIGURE 3: TOTAL UNIQUE¹ SERVED BY ETHNICITY

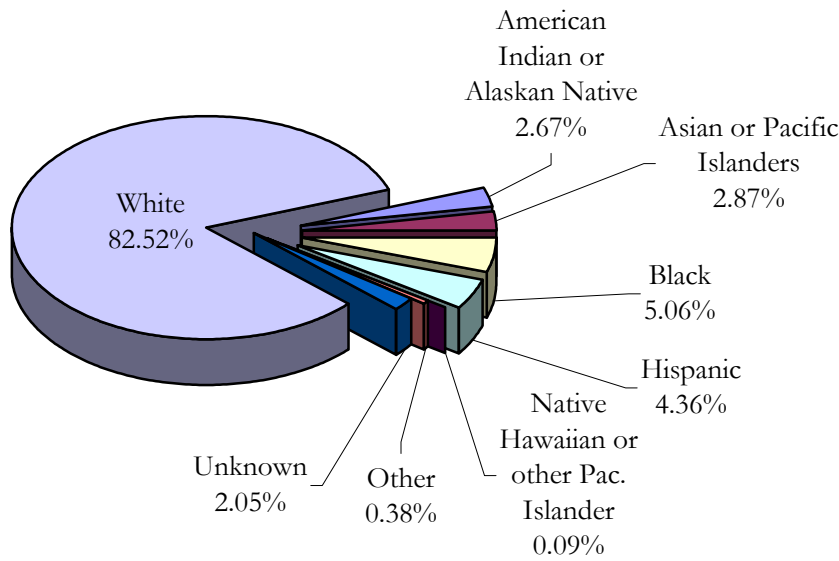


TABLE 5: UNIQUE SERVED BY MHO/ETHNICITY AND PERCENTAGE² RATE

MHO	Race Description	2005		2006					
		4 th Qtr	Rate	1 st Qtr	Rate	2 nd Qtr	Rate	3 rd Qtr	Rate
ABHA	Am. Indian/Alaskan Ntv	26	2.5%	22	2.2%	24	2.3%	40	3.6%
	Asian or Pacific Islanders	6	2.4%	5	2.0%	5	2.0%	8	3.1%
	Black	22	7.0%	16	4.9%	15	4.6%	22	6.5%
	Hispanic	43	1.3%	50	1.5%	41	1.2%	51	1.4%
	Ntv Hawaiian/Pac. Islander	0	0.0%	1	3.1%	1	2.5%	2	5.3%
	Other	7	6.3%	5	4.9%	5	5.2%	4	4.4%
	Unknown	30	18.1%	30	17.9%	23	13.5%	26	13.4%
	White	1591	7.3%	1,337	6.2%	1,238	5.7%	1,534	6.9%
Clackamas	Am. Indian/Alaskan Ntv	29	7.3%	32	8.0%	30	7.5%	30	6.6%
	Asian or Pacific Islanders	20	4.0%	20	3.9%	25	5.2%	20	3.9%
	Black	31	5.6%	33	6.2%	36	6.8%	40	6.7%
	Hispanic	63	1.3%	63	1.3%	87	1.7%	69	1.3%
	Ntv Hawaiian/Pac. Islander	3	5.7%	3	5.2%	4	7.7%	4	6.6%
	Other	4	3.3%	4	3.1%	5	4.0%	4	3.3%
	Unknown	19	9.5%	20	10.8%	23	11.6%	24	10.5%
	White	1587	8.1%	1,625	8.5%	1,580	8.3%	1,471	7.5%

¹ Unique Served: All duplicate records are removed.

² Percentage Rate Formula: n=Unique Served/d=Unique Enrolled.

Data Source: DSSURS – Data Pulled: 4/6/07

C:\MHO Utilization Databases\Quarterly Pulls\Contract 0106-1206\1005-0906 - pulled 4-6-07\1005-0906 Qtr Report.doc

**TABLE 5: UNIQUE¹ SERVED BY MHO/ETHNICITY AND PERCENTAGE² RATE
(continued)**

MHO	Race Description	2005		2006					
		4 th Qtr	Rate	1 st Qtr	Rate	2 nd Qtr	Rate	3 rd Qtr	Rate
FamilyCare	Am. Indian/Alaskan Ntv	20	11.7%	12	7.3%	15	8.6%	15	8.5%
	Asian or Pacific Islanders	26	3.9%	27	4.2%	9	1.4%	23	3.3%
	Black	48	3.8%	48	4.0%	47	4.3%	45	3.7%
	Hispanic	24	2.0%	19	1.6%	16	1.3%	19	1.3%
	Ntv Hawaiian/Pac. Islander	0	0.0%	0	0.0%	0	0.0%	0	0.0%
	Other	3	3.1%	0	0.0%	0	0.0%	1	1.0%
	Unknown	8	11.4%	7	10.4%	5	8.5%	5	6.3%
	White	403	5.3%	457	6.0%	429	5.7%	428	5.4%
GOBHI	Am. Indian/Alaskan Ntv	69	8.7%	63	7.9%	69	8.5%	55	6.6%
	Asian or Pacific Islanders	12	6.5%	13	7.2%	13	7.4%	14	7.1%
	Black	24	7.8%	26	8.2%	22	7.0%	20	5.7%
	Hispanic	158	2.4%	160	2.4%	164	2.4%	133	1.9%
	Ntv Hawaiian/Pac. Islander	1	2.4%	0	0.0%	3	6.1%	3	5.2%
	Other	6	6.6%	6	7.2%	9	10.1%	11	11.1%
	Unknown	42	15.7%	52	17.9%	52	18.6%	47	11.7%
	White	2103	9.1%	2,174	9.3%	2,218	9.5%	1,998	8.3%
JBH	Am. Indian/Alaskan Ntv	141	6.9%	142	6.9%	146	7.0%	137	6.4%
	Asian or Pacific Islanders	11	3.2%	16	4.7%	15	4.5%	14	3.7%
	Black	43	6.4%	53	7.8%	58	8.4%	49	6.8%
	Hispanic	131	2.3%	153	2.7%	150	2.6%	134	2.2%
	Ntv Hawaiian/Pac. Islander	4	4.4%	4	4.3%	4	3.8%	1	1.0%
	Other	9	4.0%	12	5.5%	12	5.7%	11	5.3%
	Unknown	82	12.0%	107	15.4%	116	16.2%	126	16.1%
	White	4001	7.2%	4,099	7.4%	4,185	7.6%	4,069	7.2%
LaneCare	Am. Indian/Alaskan Ntv	64	9.8%	68	10.3%	80	12.0%	79	11.6%
	Asian or Pacific Islanders	27	5.5%	28	5.7%	30	6.2%	27	5.5%
	Black	94	10.6%	97	11.0%	103	11.5%	90	9.5%
	Hispanic	102	3.5%	109	3.7%	108	3.7%	103	3.3%
	Ntv Hawaiian/Pac. Islander	2	7.7%	1	2.9%	1	2.6%	1	2.3%
	Other	18	9.5%	19	10.2%	18	9.3%	21	11.7%
	Unknown	121	25.1%	127	25.6%	132	25.5%	128	23.0%
	White	3399	11.2%	3,414	11.4%	3,467	11.6%	3,370	10.8%

¹ Unique Served: All duplicate records are removed.

² Percentage Rate Formula: n=Unique Served/d=Unique Enrolled.

Data Source: DSSURS – Data Pulled: 4/6/07

C:\MHO Utilization Databases\Quarterly Pulls\Contract 0106-1206\1005-0906 - pulled 4-6-07\1005-0906 Qtr Report.doc

TABLE 5: UNIQUE¹ SERVED BY MHO/ETHNICITY AND PERCENTAGE² RATE
(continued)

MHO	Race Description	2005		2006					
		4 th Qtr	Rate	1 st Qtr	Rate	2 nd Qtr	Rate	3 rd Qtr	Rate
MVBCN	Am. Indian/Alaskan Ntv	138	10.7%	135	11.3%	132	11.0%	130	10.6%
	Asian or Pac. Islanders	47	5.1%	47	5.0%	48	5.1%	47	4.9%
	Black	97	9.6%	87	8.5%	96	9.2%	87	7.7%
	Hispanic	240	1.3%	291	1.6%	319	1.7%	312	1.6%
	Ntv Hawaiian/Pac. Islander	10	5.2%	10	5.2%	13	6.3%	4	1.7%
	Other	13	4.4%	11	3.8%	14	5.3%	8	3.0%
	Unknown	79	16.6%	66	14.1%	67	14.4%	77	14.3%
	White	4320	8.6%	4,351	8.7%	4,234	8.4%	4,274	8.3%
Verity	Am. Indian/Alaskan Ntv	240	16.3%	247	17.3%	232	16.0%	226	15.0%
	Asian or Pacific Islanders	519	9.0%	513	8.9%	545	9.6%	542	9.4%
	Black	934	7.6%	928	7.5%	976	7.9%	960	7.4%
	Hispanic	201	1.7%	231	2.0%	255	2.1%	266	2.1%
	Ntv Hawaiian/Pac. Islander	2	1.5%	3	2.0%	2	1.3%	5	2.5%
	Other	24	4.2%	33	6.1%	31	5.7%	24	4.2%
	Unknown	98	18.5%	101	18.4%	85	15.1%	90	13.9%
	White	4098	9.8%	4,082	9.9%	4,273	10.4%	4,088	9.6%
Washington	Am. Indian/Alaskan Ntv	29	12.2%	30	11.9%	29	10.3%	33	11.3%
	Asian or Pacific Islanders	122	6.1%	128	6.4%	128	6.5%	125	6.3%
	Black	96	6.0%	114	7.5%	121	7.8%	112	6.9%
	Hispanic	136	1.3%	166	1.5%	184	1.6%	153	1.3%
	Ntv Hawaiian/Pac. Islander	3	2.9%	3	2.8%	4	3.2%	2	1.3%
	Other	17	6.1%	19	7.2%	16	5.6%	20	7.0%
	Unknown	62	17.9%	75	21.6%	82	23.6%	75	19.8%
	White	1622	9.1%	1,728	9.9%	1,850	10.6%	1,736	9.7%
Total Served	Am. Indian/Alaskan Ntv	756	9.4%	751	9.4%	757	9.3%	745	8.8%
	Asian or Pacific Islanders	790	7.1%	797	7.2%	818	7.5%	820	7.3%
	Black	1,389	7.3%	1,402	7.4%	1,474	7.8%	1,425	7.2%
	Hispanic	1,098	1.7%	1,242	1.9%	1,324	1.9%	1,240	1.7%
	Ntv Hawaiian/Pac. Islander	25	3.5%	25	3.4%	32	4.0%	22	2.3%
	Other	101	5.1%	109	5.7%	110	5.8%	104	5.4%
	Unknown	541	16.8%	585	17.9%	585	17.6%	598	15.7%
	White	23,124	8.6%	23,267	8.8%	23,474	8.9%	22,968	8.4%

¹ Unique Served: All duplicate records are removed.

² Percentage Rate Formula: n=Unique Served/d=Unique Enrolled.

Data Source: DSSURS – Data Pulled: 4/6/07

C:\MHO Utilization Databases\Quarterly Pulls\Contract 0106-1206\1005-0906 - pulled 4-6-07\1005-0906 Qtr Report.doc

FIGURE 4: TOTAL ALL QUARTERS: UNIQUE ENCOUNTERS BY DIAGNOSTIC GROUPS

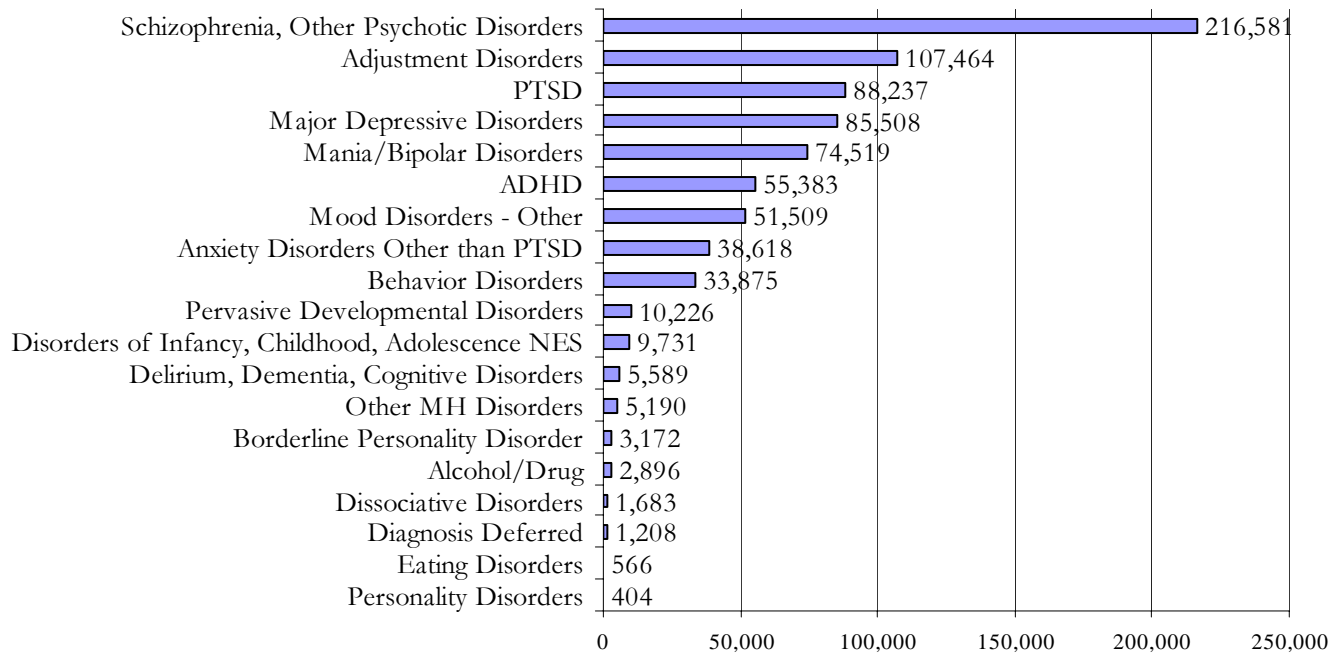


TABLE 6: UNIQUE¹ SERVED ENCOUNTERS² BY MHO/DIAGNOSTIC GROUPS IN ASCENDING ORDER BASED ON THE THIRD QUARTER 2006

MHO Contractors	Diagnostic Group	2005	2006		
		4 th Qtr	1 st Qtr	2 nd Qtr	3 rd Qtr
Total Encounters	Schizophrenia, Other Psychotic Disorders	54,050	55,174	53,171	54,186
	Adjustment Disorders	24,735	28,388	29,505	24,836
	PTSD	19,489	22,101	23,783	22,864
	Major Depressive Disorders	21,004	21,507	22,040	20,957
	Mania/Bipolar Disorders	18,770	18,618	18,525	18,606
	ADHD	12,706	14,800	15,008	12,869
	Mood Disorders - Other	11,610	13,184	14,026	12,689
	Anxiety Disorders Other than PTSD	9,174	9,962	9,922	9,560
	Behavior Disorders	7,466	8,238	9,741	8,430
	Disorders of Infancy, Childhood, Adolescence NES	1,845	2,353	2,661	2,872
	Pervasive Developmental Disorders	2,218	2,591	2,728	2,689
	Delirium, Dementia, Cognitive Disorders	1,317	1,448	1,472	1,352
	Other MH Disorders	1,644	1,234	1,218	1,094
	Borderline Personality Disorder	810	790	754	818
	Alcohol/Drug	802	720	676	698
	Dissociative Disorders	413	393	464	413
	Diagnosis Deferred	474	216	296	222
	Personality Disorders	121	119	84	80
Eating Disorders	149	149	192	76	

¹ Unique Served: All duplicate records are removed.

² Encounters: A contact or admission for covered services to OHP Member – can be 1 or more per member.

Data Source: DSSURS – Data Pulled: 4/6/07

C:\MHO Utilization Databases\Quarterly Pulls\Contract 0106-1206\1005-0906 - pulled 4-6-07\1005-0906 Qtr Report.doc

UNIQUE MEMBERS SERVED PER MONTH

MHO Contractors	Oct-05	Nov-05	Dec-05	Jan-06	Feb-06	Mar-06	Apr-06	May-06	Jun-06	Jul-06	Aug-06	Sep-06
ABHA	1,211	1,167	759	950	1,016	1,019	912	933	908	1,131	1,076	905
Clackamas	1,195	1,174	1,174	1,223	1,212	1,260	1,222	1,199	1,186	1,119	1,219	825
FamilyCare	351	360	315	371	331	360	332	328	353	354	305	300
GOBHI	1,665	1,480	1,375	1,708	1,664	1,716	1,754	1,688	1,682	1,511	1,576	1,514
JBH	3,092	3,025	2,861	3,161	3,095	3,302	3,169	3,338	3,229	2,965	3,171	2,984
LaneCare	2,810	2,870	2,743	2,894	2,870	2,969	2,948	3,068	2,971	2,773	2,873	2,797
MVBCN	3,468	3,448	3,458	3,437	3,405	3,589	3,419	3,350	3,413	3,317	3,449	3,386
Verity	4,444	4,300	4,008	4,233	4,157	4,487	4,416	4,678	4,582	4,317	4,575	4,403
Washington	1,406	1,455	1,397	1,559	1,458	1,664	1,671	1,669	1,668	1,514	1,622	1,496
Total	19,642	19,279	18,090	19,536	19,208	20,366	19,843	20,251	19,992	19,001	19,866	18,610
FFS	557	547	537	593	568	583	568	590	582	622	623	592

HOSPITAL DATA



TABLE 7: UNIQUE¹ HOSPITAL ADMISSIONS PER 1,000 MEMBERS² ENROLLED

MHO Contractors	2005	2006		
	4 th Qtr	1 st Qtr	2 nd Qtr	3 rd Qtr
ABHA	0.30	0.41	1.12	1.54
Clackamas	1.79	1.55	1.39	1.59
FamilyCare	2.07	3.46	3.13	3.95
GOBHI	0.70	0.73	0.66	0.48
JBH	2.32	2.31	2.41	1.63
LaneCare	3.45	2.97	2.91	2.55
MVBCN	0.81	0.88	0.97	0.90
Verity	3.75	2.46	2.91	2.68
Washington	2.32	2.40	2.75	1.48
Totals	2.10	1.85	2.02	1.73

(n=Total Admissions/d=Unique Enrolled per 1,000 members)

TABLE 8: UNIQUE HOSPITAL ADMISSIONS: AGE GROUPS PER 1,000 MEMBERS ENROLLED

MHO Contractors	Age Group	2005	2006		
		4 th Qtr	1 st Qtr	2 nd Qtr	3 rd Qtr
ABHA	0-17	0.0	0.1	0.5	0.2
	18-64	0.8	0.9	2.4	4.1
	65+	0.0	0.6	0.0	0.0
Clackamas	0-17	0.3	0.8	0.2	0.3
	18-64	4.4	2.9	3.6	4.3
	65+	0.9	0.9	0.9	0.0
FamilyCare	0-17	0.6	0.5	1.5	0.9
	18-64	4.1	7.8	5.8	8.8
	65+	0.0	0.0	0.0	0.0
GOBHI	0-17	0.2	0.2	0.3	0.1
	18-64	1.7	1.7	1.4	1.2
	65+	0.0	0.0	0.0	0.4
JBH	0-17	1.0	1.0	0.9	0.5
	18-64	4.3	4.4	4.8	3.5
	65+	0.4	0.2	0.2	0.2

(n=Total Admissions/d=Unique Enrolled per 1,000 members)

¹ Unique: All duplicate records are removed.² Per 1,000 members is the unique number enrolled divided by 1,000

TABLE 8: UNIQUE¹ HOSPITAL ADMISSIONS BY AGE GROUPS PER 1,000 MEMBERS² ENROLLED (*continued*)

MHO Contractors	Age Group	2005	2006		
		4 th Qtr	1 st Qtr	2 nd Qtr	3 rd Qtr
LaneCare	0-17	0.4	0.3	0.4	0.4
	18-64	6.9	6.0	5.9	5.7
	65+	4.5	5.0	4.1	0.0
MVBCN	0-17	0.3	0.2	0.3	0.2
	18-64	1.9	2.2	2.1	2.3
	65+	0.0	0.7	1.8	0.7
Verity	0-17	0.8	0.6	1.0	0.6
	18-64	8.5	5.5	6.1	6.0
	65+	0.5	0.8	0.9	1.7
Washington	0-17	0.7	0.7	0.8	0.5
	18-64	6.0	6.9	7.8	3.9
	65+	1.5	0.0	0.4	0.8
Total	0-17	0.5	0.5	0.6	0.4
	18-64	4.7	4.1	4.4	4.2
	65+	0.7	0.8	1.0	0.7

(n=Total Admissions/d=Unique Enrolled per 1,000 members)

TABLE 9: AVERAGE HOSPITAL DAYS OF SERVICE

MHO Contractors	2005	2006		
	4 th Qtr	1 st Qtr	2 nd Qtr	3 rd Qtr
ABHA	3.0	4.1	11.9	4.8
Clackamas	9.9	13.6	11.7	11.2
FamilyCare	8.0	8.1	8.2	5.6
GOBHI	9.5	7.9	8.5	0.0
JBH	4.8	5.7	5.5	7.0
LaneCare	8.3	8.2	8.6	9.0
MVBCN	10.5	10.3	10.4	11.9
Verity	8.4	7.1	9.3	8.3
Washington	8.3	9.4	7.8	9.8
Total	7.9	7.9	8.5	8.4

(n=Sum Days of Service/d=Total Discharges)

¹ Unique: All duplicated records are removed² Per 1,000 members is the unique number enrolled divided by 1,000

TABLE 10: AVERAGE HOSPITAL DAYS BY MHO/AGE GROUP

MHO Contractors	Age Groups	2005	2006		
		4 th Qtr	1 st Qtr	2 nd Qtr	3 rd Qtr
ABHA	0-17	0.0	0.0	16.2	5.8
	18-64	3.0	4.9	11.0	4.7
	65+	0.0	0.0	0.0	0.0
Clackamas	0-17	6.3	5.2	7.0	14.0
	18-64	10.4	17.6	12.8	10.9
	65+	7.5	3.5	5.5	0.0
FamilyCare	0-17	7.0	10.0	7.1	6.5
	18-64	8.2	7.9	8.6	5.5
	65+	0.0	0.0	0.0	0.0
GOBHI	0-17	10.0	8.5	9.4	0.0
	18-64	9.5	7.7	8.2	0.0
	65+	0.0	0.0	0.0	0.0
JBH	0-17	7.0	7.3	6.8	8.8
	18-64	4.0	5.2	5.2	6.8
	65+	12.0	10.0	2.0	4.0
LaneCare	0-17	5.9	8.4	9.4	7.5
	18-64	7.6	7.3	7.9	9.1
	65+	20.9	14.1	14.7	0.0
MVBCN	0-17	9.6	8.3	8.3	12.2
	18-64	10.8	10.5	10.6	11.5
	65+	0.0	11.0	12.0	16.8
Verity	0-17	7.3	6.7	7.7	5.6
	18-64	8.5	7.2	9.4	8.5
	65+	12.5	7.8	17.9	13.1
Washington	0-17	6.2	7.5	8.6	7.2
	18-64	8.7	9.8	7.6	10.5
	65+	9.8	0.0	0.0	0.0
Totals	0-17	7.3	7.1	8.1	7.8
	18-64	7.9	7.9	8.4	8.4
	65+	14.4	11.0	13.6	12.2

(n=Sum Days of Service/d=Total Discharges)

TABLE 11: PERCENT OF HOSPITAL RE-ADMISSION WITHIN 30 DAYS

MHO Contractors	2005	2006		
	3 rd Qtr	4 th Qtr	1 st Qtr	2 nd Qtr
ABHA	0.0%	8.3%	11.1%	11.6%
Clackamas	2.2%	12.2%	17.1%	12.5%
FamilyCare	0.0%	25.0%	15.8%	21.7%
GOBHI	4.5%	4.3%	14.3%	0.0%
JBH	9.5%	10.4%	10.8%	15.7%
LaneCare	11.8%	20.9%	10.5%	16.0%
MVBCN	4.7%	11.3%	1.5%	9.1%
Verity	12.5%	12.5%	11.6%	11.9%
Washington	13.4%	23.5%	7.1%	16.4%
Total	10.0%	14.7%	10.4%	13.7%

n=Unique readmissions within 30 days/d=unique discharges

TABLE 12: TOTAL HOSPITAL RE-ADMISSION WITHIN 180 DAYS

MHO Contractors	2005	2006		
	3 rd Qtr	4 th Qtr	1 st Qtr	2 nd Qtr
ABHA	0.0%	8.3%	22.2%	20.9%
Clackamas	8.7%	26.8%	31.4%	18.8%
FamilyCare	9.1%	37.5%	26.3%	32.6%
GOBHI	9.1%	21.7%	19.0%	0.0%
JBH	11.5%	25.3%	31.2%	36.1%
LaneCare	14.3%	33.6%	27.6%	35.1%
MVBCN	6.3%	19.4%	8.8%	13.6%
Verity	13.6%	28.1%	28.4%	30.2%
Washington	14.6%	42.0%	21.4%	34.5%
Total	12.2%	29.0%	25.9%	29.0%

n=Unique readmissions within 180 days/d=unique discharges

*Low admission/re-admission numbers can be reflected due to changes in the data submission requirements on January 1, 2006.

FIGURE 5: TOTAL SEEN BY OUTPATIENT WITHIN 7 DAYS OF HOSPITAL DISCHARGE
 (All re-admissions are included in the hospital discharge numbers. All Mental Health Diagnosis is included in the outpatient numbers.)
 (n=number seen within 7 days/d= hospital discharges.)

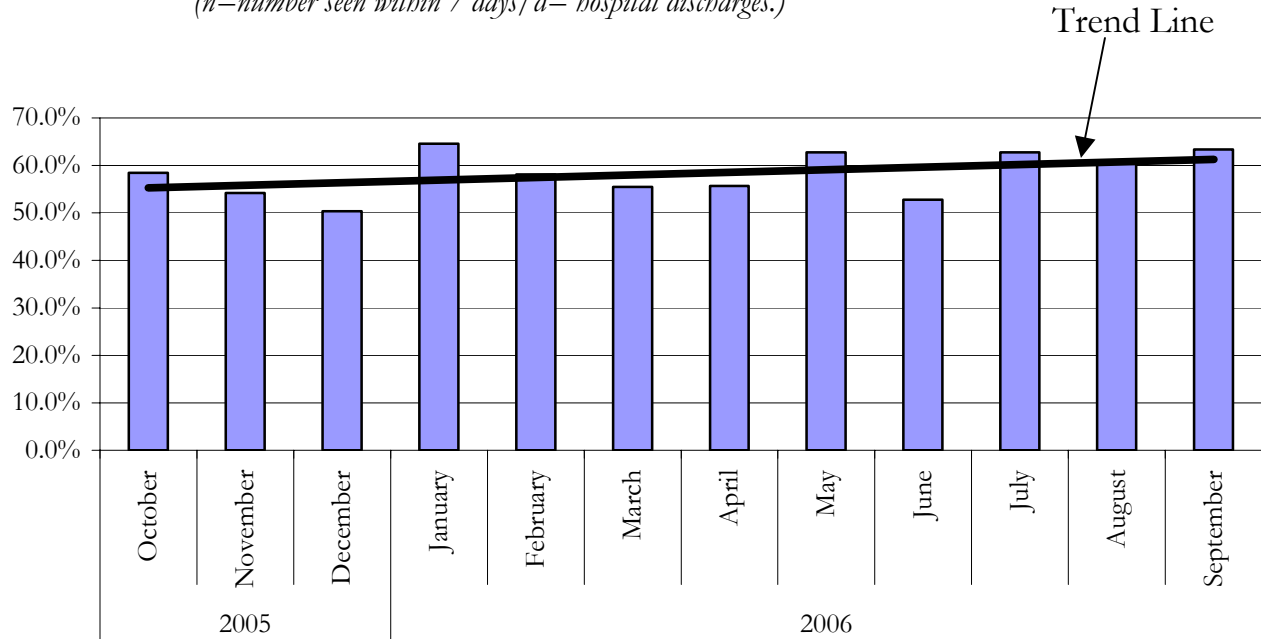


TABLE 13: SEEN BY OUTPATIENT WITHIN 7 DAYS OF HOSPITAL DISCHARGE
 (All re-admissions are included in the hospital discharge numbers. All mental health diagnoses are included in the outpatient numbers).

MHO Contractors	2005	2006		
	4 th Qtr	1 st Qtr	2 nd Qtr	3 rd Qtr
ABHA	42.9%	66.7%	66.7%	72.1%
Clackamas	56.5%	75.6%	54.3%	58.3%
FamilyCare	31.8%	18.8%	15.8%	23.9%
GOBHI	54.5%	73.9%	61.9%	0.0%
JBH	48.6%	70.8%	64.3%	69.4%
LaneCare	58.0%	50.0%	49.5%	68.1%
MVBCN	54.7%	53.2%	52.9%	66.7%
Verity	57.9%	55.2%	60.0%	61.9%
Washington	53.7%	69.1%	64.3%	61.8%
Total	54.4%	59.5%	57.1%	62.3%

(n=Seen Within 7 days/d=Hospital Discharges)

MHO UTILIZATION REPORT GLOSSARY

ADDICTIONS AND MENTAL HEALTH DIVISION (AMH):

The division office of DHS responsible for the administration of mental health services for the State of Oregon.

DIAGNOSIS CATEGORY:

Diagnosis categories are defined by the grouping of diagnoses in the most recent version of the American Psychiatric Association's Diagnostic and Statistical Manual (DSM).

ELIGIBLE:

An individual eligible for services under the OHP, but may not be enrolled into an MHO. Includes enrolled and fee-for-service.

ENCOUNTER:

An outpatient contact or Acute Inpatient Hospital Psychiatric Care admission for Covered Services provided to an OHP Member.

ENROLLED (ENROLLEE):

Eligible for the Oregon Health Plan (OHP) and enrolled in an MHO.

FEE-FOR-SERVICE (FFS):

Individuals who are eligible for the OHP, but are not enrolled with an MHO. This is also known as fee-for-service (FFS) or an "open card".

MENTAL HEALTH ORGANIZATION (MHO):

A Prepaid Health Plan under contract with DHS to provide Covered Services under the OHP Medicaid Demonstration Project and State Children's Health Insurance Program (SCHIP). MHOs can be FCHPs, CMHPs, or private MHOs or combinations thereof.

OREGON HEALTH PLAN (OHP):

Oregon's health care reform effort consisting of a Medicaid Demonstration Project, State Children's Health Insurance Program, an individual insurance program for persons excluded from health insurance coverage due to pre-existing health conditions, and a group insurance program for small businesses. One objective of this reform effort includes universal coverage for Oregonians. In the context of this report, OHP refers to all individuals on FFSMHO Utilization Report Glossary

MHO UTILIZATION REPORT GLOSSARY *(Continued)*

PERCENT ENROLLEES SERVED:

This is a general measure of access, but more related to utilization of services. It is a percentage calculated by summing the unique enrollees seen during a given time period and dividing that number by the total enrollees for that time period. For example, if there is 10,000 enrollees statewide in a given month and during that same month 500 of those enrollees receive services, the percent of enrollees served is 5%.

PERCENTAGE RATE:

Percent of enrollees served during a given time period.

SERVICE CATEGORY:

Service category is a descriptive grouping of service codes (BA, ECC, and CPT) that are similar procedurally.

UNIQUE SERVED:

Unduplicated number of individuals receiving mental health services.

UNIQUE ENCOUNTERS:

Unduplicated services received by an individual(s) within a specific time period. One individual may have had several services provided – each service would be part of the calculations.

DIAGNOSTIC CATEGORIES GLOSSARY WITH SPECIFIC DSMIV CODES

The following codes include, but are not limited to procedure codes used by service providers within the reporting period for this report.

ADHD:

314.0; 314.00; 314.01; 314.1; 314.8; 314.9; 314.90

ADJUSTMENT DISORDERS:

309.00; 309.1; 309.2; 309.21; 309.22; 309.23; 309.24; 309.28; 309.29; 309.3; 309.4;
309.40; 309.80; 309.82; 309.83; 309.89; 309.9

ALCOHOL/DRUG:

291.3; 291.4; 291.5; 291.81; 291.89; 291.9; 292.0; 292.11; 292.12; 292.2; 292.84;
292.9; 303.00; 303.01; 303.02; 303.90; 303.91; 303.92; 303.93; 304.00; 304.01;
304.03; 304.10; 304.20; 304.23; 304.3; 304.30; 304.31; 304.32; 304.33; 304.40;
304.41; 304.42; 304.43; 304.70; 304.71; 304.80; 304.81; 304.83; 304.90; 305.00;
305.01; 305.02; 305.03; 305.1; 305.20; 305.21; 305.22; 305.23; 305.30; 305.40;
305.50; 305.60; 305.61; 305.62; 305.70; 305.71; 305.72; 305.73; 305.90; 305.91

ANXIETY DISORDER OTHER THAN PTSD:

293.84; 300.0; 300.00; 300.01; 300.02; 300.09; 300.10; 300.20; 300.21; 300.22;
300.23; 300.29; 300.3; 308.3; 308.9

BEHAVIOR DISORDERS:

312.00; 312.01; 312.02; 312.30; 312.31; 312.32; 312.34; 312.39; 312.4; 312.8;
312.80; 312.81; 312.82; 312.89; 312.9; 313.69; 313.81

BORDERLINE PERSONALITY DISORDERS:

301.83

DELIRIUM, DEMENTIA, COGNITIVE DISORDERS:

290.0; 290.10; 290.11; 290.12; 290.13; 290.20; 290.21; 290.3; 290.40; 290.41;
290.42; 290.43; 291.0; 291.2; 292.82; 292.83; 292.89; 293.0; 293.84; 294.0; 294.1;
294.10; 294.11; 294.8; 294.9; 294.90; 310.0; 310.1; 310.10; 310.9

DIAGNOSIS DEFERRED:

799.9

DIAGNOSTIC CATEGORIES GLOSSARY

WITH SPECIFIC DSM-IV CODES

(CONTINUED)

DISORDERS OF INFANCY, CHILDHOOD, ADOLESCENCE NES:

299.10; 307.0; 307.20; 307.22; 307.23; 307.3; 307.6; 307.7; 307.9; 313.0; 313.23;
313.82; 313.89; 313.9; 315.00; 315.31; 315.32; 315.39; 315.4; 315.9; 317.0; 318.0;
318.1; 318.2; 318.81; 319.0; 787.6

DISSOCIATIVE DISORDERS:

300.12; 300.13; 300.14; 300.15; 300.6

EATING DISORDERS:

307.1; 307.50; 307.51; 307.52; 307.53; 307.59; 780.52; 780.59

MAJOR DEPRESSIVE DISORDERS:

296.2; 296.20; 296.21; 296.22; 296.23; 296.24; 296.25; 296.26; 296.3; 296.30;
296.31; 296.32; 296.33; 296.34; 296.35; 296.36

MANIA/BIPOLAR DISORDERS:

296; 296.0; 296.00; 296.01; 296.02; 296.03; 296.04; 296.05; 296.06; 296.09; 296.10;
296.11; 296.12; 296.13; 296.15; 296.4; 296.40; 296.41; 296.42; 296.43; 296.44;
296.45; 296.46; 296.50; 296.51; 296.52; 296.53; 296.54; 296.55; 296.56; 296.6;
296.60; 296.61; 296.62; 296.63; 296.64; 296.65; 296.66; 296.7; 296.70; 296.8;
296.80; 296.81; 296.82; 296.89; 296.9

MOOD DISORDERS WITHOUT BEHAVIOR, MANIA AND BIPOLAR:

293.83; 296.09; 296.82; 296.90; 296.99; 300.4; 300.40; 301.13; 309.1; 311; 311.0;
311.00

OTHER MENTAL HEALTH (MH) DISORDERS:

293.89; 293.9; 296.74; 300.11; 300.16; 300.19; 300.7; 300.81; 300.82; 300.9; 302.1;
302.2; 302.4; 302.70; 302.73; 302.9; 305.93; 306.3; 307.42; 307.44; 307.45; 307.46;
307.47; 307.80; 307.89; 307.9; 308.0; 308.1; 308.2; 309.29; 316; 968.9; 995.2;
995.50; 995.52; 995.53; 995.54; 995.59; 995.81; 995.83; V610; V611.0; V612.0;
V612.1; V618; V619; V628.1; V628.2; V628.9; V629; V654.0; V710.1; V710.2;
V710.9; V829

PERSONALITY DISORDERS:

301.0; 301.10; 301.12; 301.20; 301.22; 301.3; 301.4; 301.50; 301.6; 301.7; 301.81;
301.82; 301.84; 301.89; 301.9

DIAGNOSTIC CATEGORIES GLOSSARY
WITH SPECIFIC DSMIV CODES
(Continued)

PERVASIVE DEVELOPMENTAL DISORDERS:

299.0; 299.00; 299.11; 299.80; 299.81; 299.90

POST-TRAUMATIC STRESS DISORDER (PTSD):

309.81

SCHIZOPHRENIA, OTHER PSYCHOTIC DISORDERS:

293.81; 293.82; 295.0; 295.00; 295.01; 295.02; 295.03; 295.10; 295.11; 295.12;
295.13; 295.14; 295.15; 295.20; 295.22; 295.23; 295.24; 295.3; 295.30; 295.31;
295.32; 295.33; 295.34; 295.35; 295.40; 295.42; 295.43; 295.44; 295.45; 295.50;
295.51; 295.52; 295.53; 295.54; 295.55; 295.60; 295.61; 295.62; 295.64; 295.65;
295.7; 295.70; 295.71; 295.72; 295.73; 295.74; 295.75; 295.80; 295.81; 295.82;
295.83; 295.84; 295.85; 295.9; 294.90; 295.91; 295.92; 295.93; 295.94; 295.95;
297.0; 297.1; 297.2; 297.3; 297.30; 297.9; 298.0; 298.3; 298.4; 298.8; 298.9; 298.90;
299.01

SERVICE CATEGORIES GLOSSARY WITH SPECIFIC PROCEDURES CODES

ALTERNATIVES TO INPATIENT HOSPITALIZATION:

H0035; H2013

ASSERTIVE COMMUNITY TREATMENT:

H0039

ASSESSMENT & EVALUATION:90801; 90802; 96100; 99090; 99214; 99222; 99223; 99231; 99232; 99233; 99238;
99239; BA008; BA010; BA011; H0002; H0031; T1023**CASE MANAGEMENT:**

99371; BA046; BA047; BA147; H0032; T1016

CONSULTATION:

90882; 90887; 99255; BA017

CRISIS INTERVENTION:

S9484

FAMILY THERAPY:

90846; 90849; BA013; BA016

GROUP THERAPY:

90853; 90857; BA015; BA115

INDIVIDUAL THERAPY:90804; 90805; 90806; 90807; 90808; 90809; 90810; 90811; 90812; 90813; 90814;
90815; BA011; BA111; H0004**INTERPRETIVE SERVICES:**

T1013

ISA - AE:

H0018

ISA - DAY TREATMENT:

ECC13; H0037; H2012

**SERVICE CATEGORIES GLOSSARY WITH
SPECIFIC PROCEDURES CODES**
(Continued)

ISA - MST:

H2033

ISA - RESIDENTIAL:

ECC11; H0019

MEDICATION MANAGEMENT:

90862; BA019; BA026; BA126; H0033; H0034; H2010

OUTPATIENT THERAPY:90847; 90849; 90899; ECC50; H0045; H2011; H2021; H2022; H2023; S9484;
T1005**RESPIRE CARE:**

ECC20; H0045; S5151; S9125

SKILLS TRAINING:

G0176; G0177; H2014; H2027; H2032

SUPPORTIVE DAY PROGRAM:

H0036

TREATMENT FOSTER CARE:

S5145; S5146