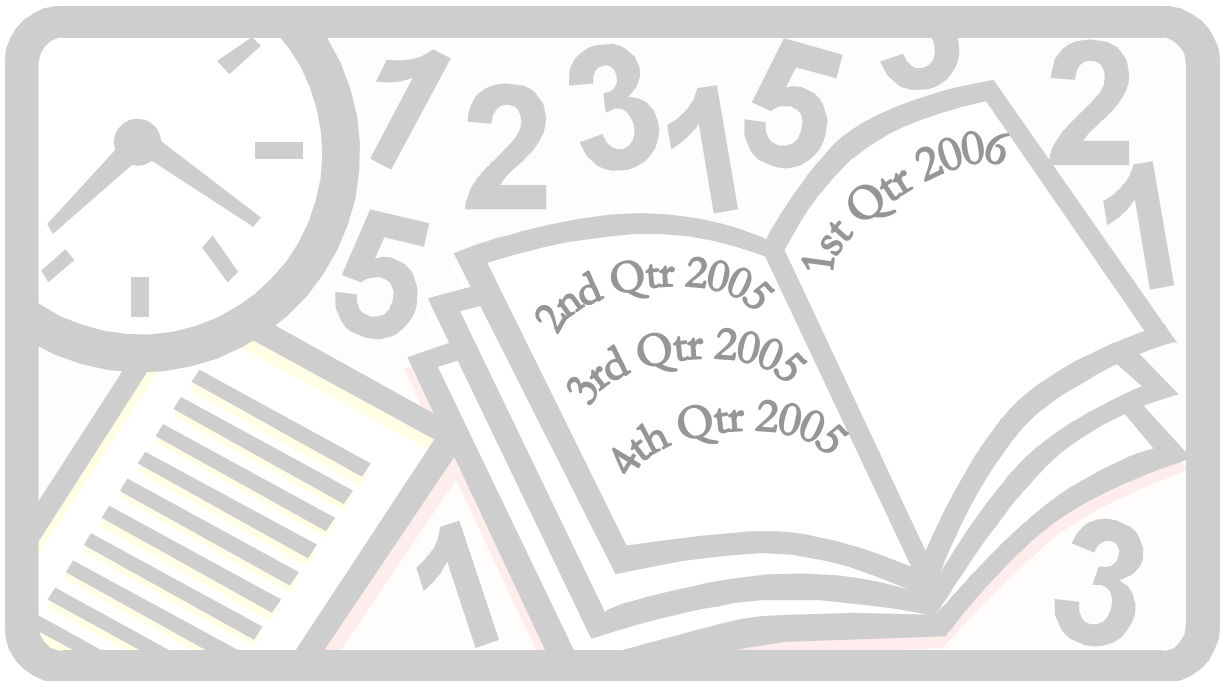


Department of Human Services  
Office of Mental Health and Addiction Services

# MHO Utilization Quarterly Report

April 2005 through March 2006



Report Produced by  
Program Analysis and Evaluation Team  
JULY 2006

**EXECUTIVE SUMMARY**  
**REPORT ON OREGON HEALTH PLAN (OHP)**  
**UTILIZATION AND ENROLLMENT FOR**  
**MENTAL HEALTH SERVICES:**  
**APRIL 2005 THROUGH MARCH 2006**

The following is a summary of the Mental Health Organization (MHO) Utilization Quarterly Report for the period of April 1, 2005 through March 31, 2006. This report contains enrollment, unique served and hospitalization data. The data for this report were pulled June 15, 2006. All information came from the Office of Medical Assistance Programs' (OMAP) Decision Support/Surveillance and Utilization Review System (DSSURS). There is a 180-day lag in encounter data submissions; this is reflected in the Hospital Data. **Any conclusions drawn from the information should consider lag in data submission into account.**

# TABLE OF CONTENTS

The format and contents are constructed as follows:

- Figures are used to illustrate trends in statewide data.
- Tables are used to summarize quarterly data at the MHO level. Some tables include FFS and All Eligibles.



Executive Summary .....	i
<b>Enrolled Data:</b>	
Figure 1: Unique Enrolled by MHO .....	1
Table 1: Unique Enrolled by MHO .....	1
Table 2: Unique Enrolled by Gender.....	2
Figure 2: Total Enrolled Children (0-17) And Adults (18+) .....	3
Table 3: Enrolled Children (0-17) and Adults (18+) Quarter.....	3
Figure 3: Total Enrolled by Age Groups.....	4
Table 4: Unique Enrolled by Age Groups and Percentage by MHO Total .....	4
Figure 4: Percentage of Total Unique Enrolled by Ethnicity .....	6
Table 5: Unique Enrolled by Ethnicity.....	6
<b>Served Data:</b>	
Figure 4: Unique Served by MHO.....	10
Table 6: Unique Served by MHO and Percentage Rate.....	10
Table 7: Unique Served by Gender and Percentage Rate.....	11
Figure 5: Total All Quarters Unique Served Children and Adults .....	12
Table 8: Unique Served by MHO: Children (0-17) and Adults (18+).....	12
Table 9: Unique Served by MHO/Age Group and Percentage Rate .....	13
Figure 6: Total Unique Served by Ethnicity.....	14
Table 10: Unique Served by MHO/Ethnicity and Percentage Rate .....	14
Figure 7: Total All Quarters: Unique Encounters by Service Categories.....	17

## Table of Contents

(Continued)

Table 11: Unique Encounters by MHO/Service Categories	
ABHA & Clackamas.....	18
FamilyCare & GOBHI.....	19
JBH & LaneCare .....	20
MVBCN & Verity.....	21
Washington & Total.....	22
Fee-For-Service .....	23
Figure 8: Total All Quarters: Unique Encounters by Diagnostic Groups .....	23
Table 12: Unique Encounters by MHO/Diagnostic Groups	
ABHA & Clackamas.....	24
FamilyCare & GOBHI.....	25
JBH & LaneCare .....	26
MVBCN & Verity.....	27
Washington & Total.....	28
Fee-For-Service .....	29

### **Hospital Data:**

Table 13: Unique Hospital Admissions per 1,000 Members Enrolled .....	30
Table 14: Unique Hospital Admissions by Age Groups per 1,000 Members .....	30
Table 15: Average Hospital Days of Service.....	31
Table 16: Average Hospital Days by MHO/Age Group.....	32
Table 17: Percent of Hospital Re-Admission within 30 days.....	33
Table 18: Total Hospital Re-Admission within 180 days .....	33
Figure 9: Total Seen by Outpatient within 7 Days of Hospital Discharge.....	34
Table 19: Seen by Outpatient within 7 Days of Hospital Discharge .....	34

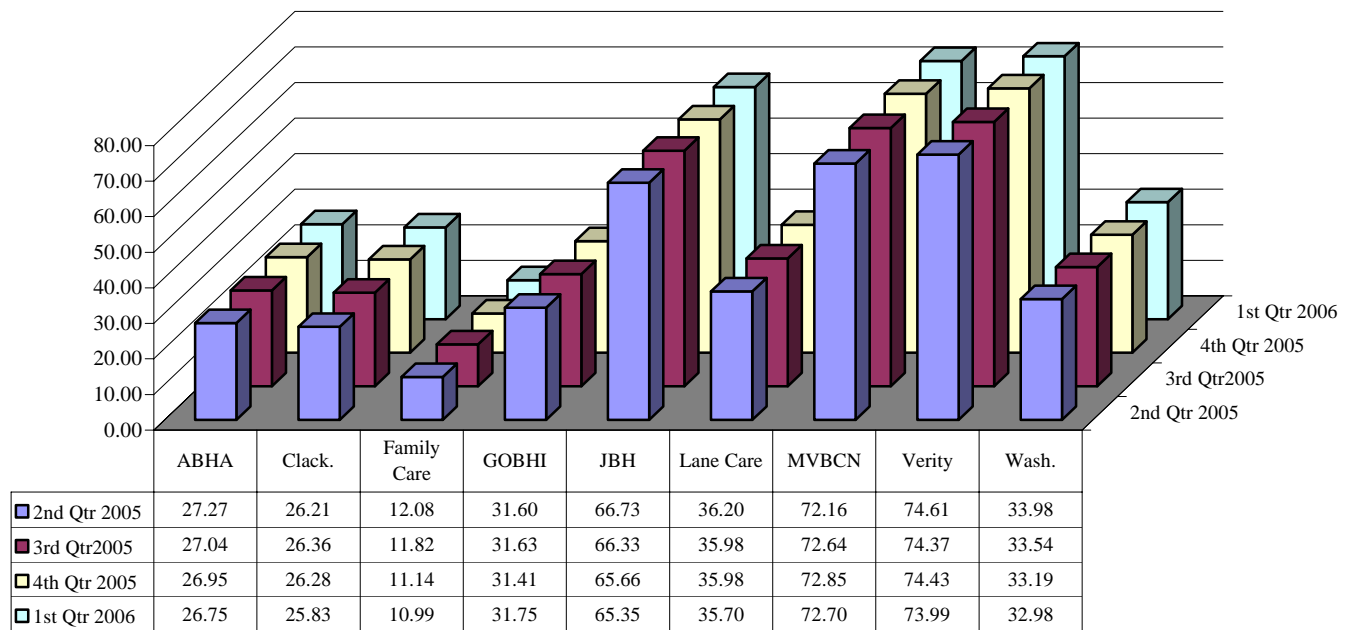
### **Glossaries:**

MHO Utilization Report Glossary .....	35
Diagnostic Categories Glossary with Specific DSMIV Codes.....	37
Service Categories Glossary with Specific Procedure Codes .....	40
Enrollment Numbers per Month .....	42
Unique Members Served per Month.....	43

# Enrollment Data

- ❖ Enrolled: Eligible for OHP and enrolled in an MHO
- ❖ Eligibles: Both Enrolled and FFS
- ❖ Fee-For-Service (FFS): Eligible for OHP and NOT enrolled with an MHO (Open Card)

**FIGURE 1: UNIQUE ENROLLED BY MHO PER 1,000 MEMBERS**



**TABLE 1: UNIQUE ENROLLED BY MHO**

MHO Contractors	2005						2006	
	2 <sup>nd</sup> Qtr	% Enrolled	3 <sup>rd</sup> Qtr	% Enrolled	4 <sup>th</sup> Qtr	% Enrolled	1 <sup>st</sup> Qtr	% Enrolled
ABHA	27,265	7.2%	27,041	7.1%	26,954	7.1%	26,746	7.1%
Clackamas	26,211	6.9%	26,360	6.9%	26,275	7.0%	25,833	6.9%
FamilyCare	12,075	3.2%	11,821	3.1%	11,138	2.9%	10,987	2.9%
GOBHI	31,597	8.3%	31,630	8.3%	31,410	8.3%	31,747	8.4%
JBH	66,731	17.5%	66,327	17.5%	65,656	17.4%	65,350	17.4%
LaneCare	36,201	9.5%	35,976	9.5%	35,979	9.5%	35,700	9.5%
MVBCN	72,161	18.9%	72,641	19.1%	72,852	19.3%	72,695	19.3%
Verity	74,610	19.6%	74,370	19.6%	74,425	19.7%	73,986	19.7%
Washington	33,978	8.9%	33,539	8.8%	33,191	8.8%	32,976	8.8%
<b>Total Enrolled</b>	<b>380,829</b>	<b>100.0%</b>	<b>379,705</b>	<b>100.0%</b>	<b>377,880</b>	<b>100.0%</b>	<b>376,020</b>	<b>100.0%</b>

n=Unique Enrolled/d=Total Enrolled

	2 <sup>nd</sup> Qtr	% Enrolled	3 <sup>rd</sup> Qtr	% Enrolled	4 <sup>th</sup> Qtr	% Enrolled	1 <sup>st</sup> Qtr	% Enrolled
Total Enrolled	380,829	89.8%	379,705	89.9%	377,880	90.1%	376,020	89.6%
All Eligibles <sup>2</sup>	424,251	100%	422,149	100%	419,221	100%	419,885	100%
FFS <sup>3</sup>	43,422	10.2%	42,444	10.1%	41,341	9.9%	43,865	10.4%

n=Total Enrolled/d=All Eligibles

n=FFS/d=All Eligibles

<sup>2</sup> Eligibles: Both Enrolled and FFS

<sup>3</sup> Fee-For-Service (FFS): Eligible for OHP and NOT enrolled with an MHO (Open Card)

**TABLE 2: UNIQUE ENROLLED<sup>1</sup> BY GENDER**

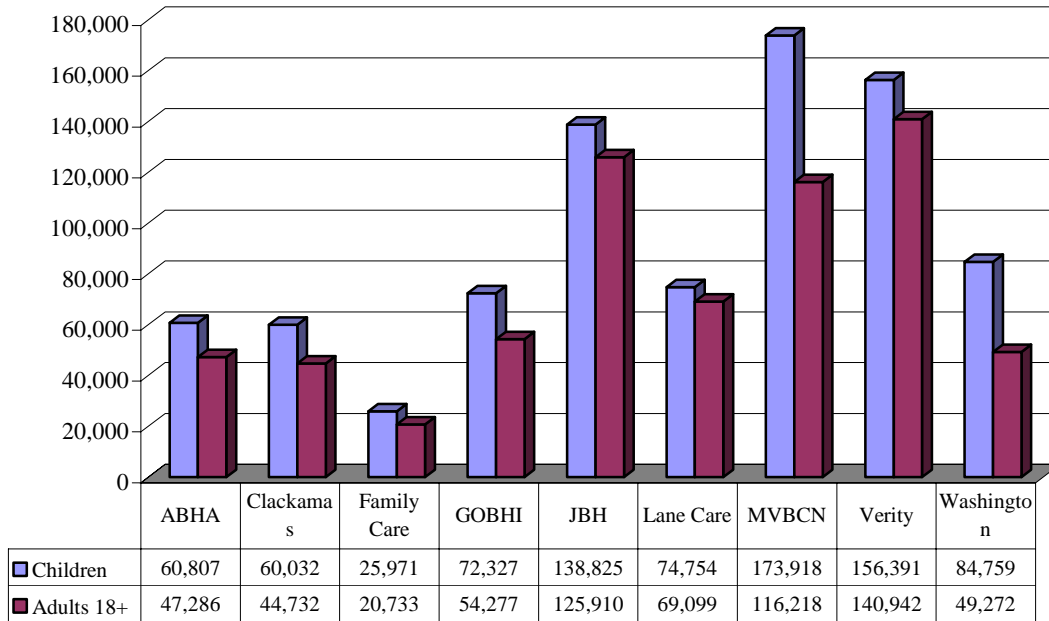
MHO Contractors	Gender	2005			2006
		2 <sup>nd</sup> Qtr	3 <sup>rd</sup> Qtr	4 <sup>th</sup> Qtr	1 <sup>st</sup> Qtr
ABHA	Female	15,637	15,565	15,498	15,405
	Male	11,628	11,476	11,456	11,341
Clackamas	Female	14,907	14,990	14,959	14,676
	Male	11,304	11,370	11,316	11,157
FamilyCare	Female	6,855	6,763	6,377	6,344
	Male	5,220	5,058	4,761	4,643
GOBHI	Female	17,971	17,989	17,856	18,088
	Male	13,626	13,641	13,554	13,659
JBH	Female	38,210	38,072	37,705	37,423
	Male	28,521	28,255	27,951	27,926
LaneCare	Female	20,831	20,705	20,689	20,522
	Male	15,370	15,271	15,290	15,178
MVBCN	Female	40,884	41,177	41,319	41,159
	Male	31,277	31,464	31,533	31,536
Verity	Female	41,649	41,578	41,620	41,487
	Male	32,961	32,792	32,805	32,499
Washington	Female	19,291	19,043	18,830	18,702
	Male	14,687	14,496	14,361	14,274
Total by Quarter	Female	216,235	215,882	214,853	213,806
	Male	164,594	163,823	163,027	162,213
All Eligibles <sup>2</sup>	Female	243,642	242,711	241,134	241,406
	Male	180,637	179,438	178,027	178,479
Fee-For-Service <sup>3</sup> (FFS)	Female	27,407	26,829	26,281	27,600
	Male	16,043	15,615	15,000	16,266

<sup>1</sup> Enrolled: Eligible for OHP and enrolled in an MHO

<sup>2</sup> Eligibles: Both Enrolled and FFS

<sup>3</sup> Fee-For-Service (FFS): Eligible for OHP and NOT enrolled with an MHO (Open Card)

**FIGURE 2: TOTAL ENROLLED<sup>1</sup> CHILDREN (0-17) AND ADULTS (18+)**



**TABLE 3: ENROLLED CHILDREN (0-17) AND ADULTS (18+) QUARTER**

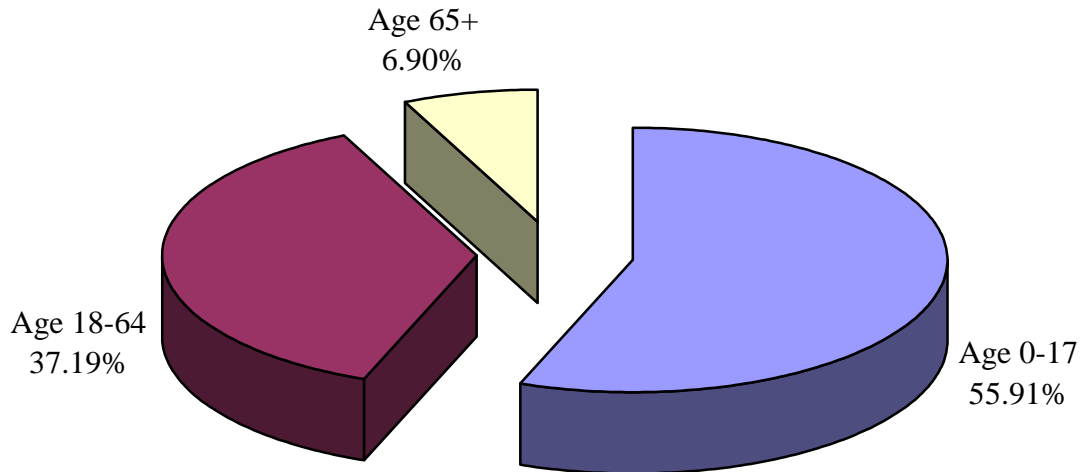
MHO Contractors	Age Groups	2005						2006	
		2 <sup>nd</sup> Qtr	% By MHO Qtr Total <sup>2</sup>	3 <sup>rd</sup> Qtr	% By MHO Qtr Total	4 <sup>th</sup> Qtr	% by MHO Qtr Total	1 <sup>st</sup> Qtr	% by MHO Qtr Total
ABHA	Children	14,973	54.9%	15,076	55.8%	15,328	56.9%	15,441	57.7%
	Adults	12,292	45.1%	11,965	44.2%	11,626	43.1%	11,305	42.3%
Clackamas	Children	14,853	56.7%	14,997	56.9%	15,046	57.3%	14,986	58.0%
	Adults	11,358	43.3%	11,363	43.1%	11,229	42.7%	10,847	42.0%
FamilyCare	Children	6,613	54.8%	6,552	55.4%	6,249	56.1%	6,168	56.1%
	Adults	5,462	45.2%	5,269	44.6%	4,889	43.9%	4,819	43.9%
GOBHI	Children	17,664	55.9%	17,940	56.7%	18,024	57.4%	18,541	58.4%
	Adults	13,933	44.1%	13,690	43.3%	13,386	42.6%	13,206	41.6%
JBH	Children	34,162	51.2%	34,515	52.0%	34,818	53.0%	35,062	53.7%
	Adults	32,569	48.8%	31,812	48.0%	30,838	47.0%	30,288	46.3%
LaneCare	Children	18,437	50.9%	18,544	51.5%	18,828	52.3%	18,927	53.0%
	Adults	17,764	49.1%	17,432	48.5%	17,151	47.7%	16,773	47.0%
MVBCN	Children	42,430	58.8%	43,302	59.6%	43,944	60.3%	44,335	61.0%
	Adults	29,731	41.2%	29,339	40.4%	28,908	39.7%	28,360	39.0%
Verity	Children	38,394	51.5%	38,828	52.2%	39,531	53.1%	39,763	53.7%
	Adults	36,216	48.5%	35,542	47.8%	34,894	46.9%	34,223	46.3%
Washington	Children	21,086	62.1%	21,161	63.1%	21,087	63.5%	21,140	64.1%
	Adults	12,892	37.9%	12,378	36.9%	12,104	36.5%	11,836	35.9%

<sup>1</sup> Enrolled: Eligible for OHP and enrolled in an MHO

<sup>2</sup> Percentage formula: n=unique enrolled by child or adult/d=MHO total enrolled



**FIGURE 3: TOTAL ENROLLED BY AGE GROUPS**



**TABLE 4: UNIQUE Enrolled<sup>1</sup> by Age Groups and Percentage by MHO Total**

MHO Contractors	Age Groups	2005						2006	
		2 <sup>nd</sup> Qtr	% by MHO Qtr Total <sup>2</sup>	3 <sup>rd</sup> Qtr	% by MHO Qtr Total	4 <sup>th</sup> Qtr	% by MHO Qtr Total	1 <sup>st</sup> Qtr	% by MHO Qtr Total
ABHA	0-17	14,973	54.9%	15,076	55.8%	15,328	4.0%	15,441	57.7%
	18-64	10,568	38.8%	10,236	37.9%	9,877	2.6%	9,590	35.9%
	65 +	1,724	6.3%	1,729	6.4%	1,749	0.5%	1,715	6.4%
Clackamas	0-17	14,853	56.7%	14,997	56.9%	15,046	4.0%	14,986	58.0%
	18-64	9,344	35.6%	9,195	34.9%	9,062	2.4%	8,704	33.7%
	65 +	2,014	7.7%	2,168	8.2%	2,167	0.6%	2,143	8.3%
FamilyCare	0-17	6,613	54.8%	6,552	55.4%	6,249	1.6%	6,168	56.1%
	18-64	5,111	42.3%	4,914	41.6%	4,533	1.2%	4,436	40.4%
	65 +	351	2.9%	355	3.0%	356	0.1%	383	3.5%
GOBHI	0-17	17,664	55.9%	17,940	56.7%	18,024	4.7%	18,541	58.4%
	18-64	11,631	36.8%	11,392	36.0%	11,109	2.9%	10,951	34.5%
	65 +	2,302	7.3%	2,298	7.3%	2,277	0.6%	2,255	7.1%
JBH	0-17	34,162	51.2%	34,515	52.0%	34,818	9.2%	35,062	53.7%
	18-64	27,984	41.9%	27,265	41.1%	26,317	6.9%	25,826	39.5%
	65 +	4,585	6.9%	4,547	6.9%	4,521	1.2%	4,462	6.8%

<sup>1</sup> Enrolled: Eligible for OHP and enrolled in an MHO

<sup>2</sup> Percentage formula: n=unique enrolled by age group/d=MHO total enrolled

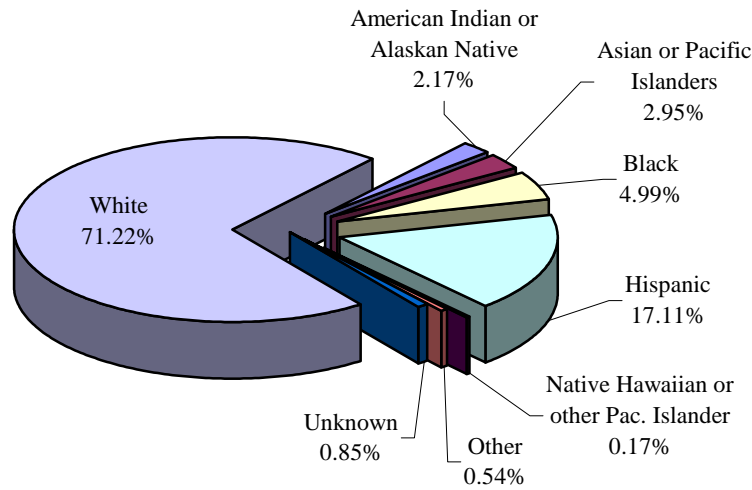
**TABLE 4: UNIQUE Enrolled<sup>1</sup> by Age Groups (continued)**

MHO Contractors	Age Groups	2005						2006	
		2 <sup>nd</sup> Qtr	% by MHO Qtr Total <sup>2</sup>	3 <sup>rd</sup> Qtr	% by MHO Qtr Total	4 <sup>th</sup> Qtr	% by MHO Qtr Total	1 <sup>st</sup> Qtr	% by MHO Qtr Total
LaneCare	0-17	18,437	50.9%	18,544	51.5%	18,828	5.0%	18,927	53.0%
	18-64	15,830	43.7%	15,482	43.0%	15,183	4.0%	14,840	41.6%
	65 +	1,934	5.3%	1,950	5.4%	1,968	0.5%	1,933	5.4%
MVBCN	0-17	42,430	58.8%	43,302	59.6%	43,944	11.6%	44,335	61.0%
	18-64	25,395	35.2%	24,996	34.4%	24,527	6.5%	24,013	33.0%
	65 +	4,336	6.0%	4,343	6.0%	4,381	1.2%	4,347	6.0%
Verity	0-17	38,394	51.5%	38,828	52.2%	39,531	10.4%	39,763	53.7%
	18-64	29,868	40.0%	29,246	39.3%	28,609	7.5%	27,968	37.8%
	65 +	6,348	8.5%	6,296	8.5%	6,285	1.7%	6,255	8.5%
Washington	0-17	21,086	62.1%	21,161	63.1%	21,087	5.6%	21,140	64.1%
	18-64	10,459	30.8%	9,845	29.4%	9,554	2.5%	9,292	28.2%
	65 +	2,433	7.2%	2,533	7.6%	2,550	0.7%	2,544	7.7%
Total by Quarter	0-17	208,612	54.8%	210,915	55.5%	212,855	56.1%	214,363	57.0%
	18-64	146,190	38.4%	142,571	37.5%	138,771	36.5%	135,620	36.1%
	65 +	26,027	6.8%	26,219	6.9%	26,254	6.9%	26,037	6.9%

<sup>1</sup> Enrolled: Eligible for OHP and enrolled in an MHO

<sup>2</sup> Percentage formula: n=unique enrolled by age group/d=MHO total enrolled

**FIGURE 4: PERCENTAGE OF TOTAL UNIQUE ENROLLED<sup>1</sup> BY ETHNICITY**



**TABLE 5: UNIQUE ENROLLED BY ETHNICITY**

MHO Contractors	Ethnicity	2005						2006	
		2 <sup>nd</sup> Qtr	% by MHO Qtr Total <sup>2</sup>	3 <sup>rd</sup> Qtr	% by MHO Qtr Total	4 <sup>th</sup> Qtr	% by MHO Qtr Total	1 <sup>st</sup> Qtr	% by MHO Qtr Total
ABHA	Am. Indian / Alaskan Ntv	1,188	4.4%	1,163	4.3%	1,041	3.8%	1,015	3.8%
	Asian or Pac. Islanders	246	0.9%	243	0.9%	250	0.9%	248	0.9%
	Black	259	0.9%	291	1.1%	316	1.2%	325	1.2%
	Hispanic	3,010	11.0%	3,067	11.3%	3,245	12.0%	3,332	12.5%
	Ntv Hawaiian/Pac. Islander	30	0.1%	39	0.1%	41	0.2%	32	0.1%
	Other	128	0.5%	111	0.4%	112	0.4%	103	0.4%
	Unknown	176	0.6%	161	0.6%	168	0.6%	170	0.6%
	White	22,228	81.5%	21,966	81.2%	21,781	80.5%	21,521	80.5%
Clackamas	Am. Indian / Alaskan Ntv	408	1.6%	414	1.6%	398	1.5%	398	1.5%
	Asian or Pac. Islanders	480	1.8%	483	1.8%	504	1.9%	507	2.0%
	Black	501	1.9%	526	2.0%	549	2.1%	530	2.1%
	Hispanic	4,847	18.5%	4,971	18.9%	4,859	18.4%	4,918	19.0%
	Ntv Hawaiian/Pac. Islander	32	0.1%	45	0.2%	53	0.2%	60	0.2%
	Other	133	0.5%	123	0.5%	120	0.5%	131	0.5%
	Unknown	189	0.7%	184	0.7%	202	0.8%	198	0.8%
	White	19,621	74.9%	19,614	74.4%	19,590	74.3%	19,091	73.9%

<sup>1</sup> Enrolled: Eligible for OHP and enrolled in an MHO

<sup>2</sup> Percentage formula: n=unique enrolled by ethnicity/d=MHO total enrolled

**TABLE 5: UNIQUE ENROLLED<sup>1</sup> BY ETHNICITY (Continued)**

MHO	Ethnicity	2005						2006	
		2 <sup>nd</sup> Qtr	% of MHO Qtr Total <sup>2</sup>	3 <sup>rd</sup> Qtr	% of MHO Qtr Total	4 <sup>th</sup> Qtr	% of MHO Qtr Total	1 <sup>st</sup> Qtr	% of MHO Qtr Totals
FamilyCare	Am. Indian/Alaskan Ntv	194	1.6%	188	1.6%	172	1.5%	165	1.5%
	Asian or Pac. Islanders	734	6.1%	712	6.0%	671	5.7%	647	5.9%
	Black	1,340	11.1%	1,305	11.0%	1,251	10.6%	1,204	11.0%
	Hispanic	1,293	10.7%	1,283	10.9%	1,206	10.2%	1,210	11.0%
	Ntv Hawaiian/Pac. Islander	27	0.2%	21	0.2%	26	0.2%	24	0.2%
	Other	118	1.0%	115	1.0%	98	0.8%	95	0.9%
	Unknown	55	0.5%	67	0.6%	73	0.6%	67	0.6%
	White	8,314	68.9%	8,130	68.8%	7,641	64.6%	7,575	68.9%
GOBHI	Am. Indian/Alaskan Ntv	790	2.5%	811	2.6%	796	2.5%	803	2.5%
	Asian or Pac. Islanders	189	0.6%	185	0.6%	187	0.6%	181	0.6%
	Black	311	1.0%	312	1.0%	310	1.0%	316	1.0%
	Hispanic	6,527	20.7%	6,556	20.7%	6,491	20.5%	6,694	21.1%
	Ntv Hawaiian/Pac. Islander	28	0.1%	42	0.1%	41	0.1%	51	0.2%
	Other	119	0.4%	110	0.3%	91	0.3%	83	0.3%
	Unknown	271	0.9%	273	0.9%	269	0.9%	295	0.9%
	White	23,362	73.9%	23,341	73.8%	23,225	73.4%	23,324	73.5%
JBH	Am. Indian/Alaskan Ntv	2,096	3.1%	2,054	3.1%	2,049	3.1%	2,081	3.2%
	Asian or Pac. Islanders	319	0.5%	334	0.5%	340	0.5%	343	0.5%
	Black	662	1.0%	666	1.0%	677	1.0%	679	1.0%
	Hispanic	5,448	8.2%	5,663	8.5%	5,630	8.5%	5,722	8.8%
	Ntv Hawaiian/Pac. Islander	81	0.1%	92	0.1%	92	0.1%	92	0.1%
	Other	227	0.3%	228	0.3%	226	0.3%	221	0.3%
	Unknown	632	0.9%	670	1.0%	703	1.1%	709	1.1%
	White	57,266	85.8%	56,620	85.4%	55,939	84.3%	55,503	84.9%
LaneCare	Am. Indian/Alaskan Ntv	719	2.0%	657	1.8%	656	1.8%	663	1.9%
	Asian or Pac. Islanders	504	1.4%	492	1.4%	498	1.4%	496	1.4%
	Black	870	2.4%	865	2.4%	888	2.5%	886	2.5%
	Hispanic	2,804	7.7%	2,831	7.9%	2,878	8.0%	2,919	8.2%
	Ntv Hawaiian/Pac. Islander	32	0.1%	29	0.1%	26	0.1%	35	0.1%
	Other	192	0.5%	201	0.6%	191	0.5%	187	0.5%
	Unknown	433	1.2%	453	1.3%	490	1.4%	501	1.4%
	White	30,647	84.7%	30,449	84.6%	30,352	84.4%	30,013	84.1%

<sup>1</sup> Enrolled: Eligible for OHP and enrolled in an MHO

<sup>2</sup> Percentage formula: n=unique enrolled by ethnicity/d=MHO total enrolled

**TABLE 5: UNIQUE ENROLLED<sup>1</sup> BY ETHNICITY (Continued)**

MHO	Ethnicity	2005				2006			
		2 <sup>nd</sup> Qtr	% of MHO Qtr Total <sup>2</sup>	3 <sup>rd</sup> Qtr	% of MHO Qtr Total	4 <sup>th</sup> Qtr	% of MHO Qtr Total	1 <sup>st</sup> Qtr	% of MHO Qtr Totals
MVBCN	Am. Indian/Alaskan Ntv	1,223	1.7%	1,242	1.7%	1,295	1.8%	1,211	1.7%
	Asian or Pac. Islanders	922	1.3%	916	1.3%	926	1.3%	944	1.3%
	Black	991	1.4%	987	1.4%	1,014	1.4%	1,028	1.4%
	Hispanic	17,700	24.5%	17,938	24.7%	18,168	25.0%	18,444	25.4%
	Ntv Hawaiian/Pac. Islander	167	0.2%	191	0.3%	191	0.3%	191	0.3%
	Other	306	0.4%	306	0.4%	298	0.4%	287	0.4%
	Unknown	456	0.6%	455	0.6%	493	0.7%	479	0.7%
	White	50,396	69.8%	50,606	69.7%	50,467	69.5%	50,111	68.9%
Verity	Am. Indian/Alaskan Ntv	1,520	2.0%	1,536	2.1%	1,494	2.0%	1,442	1.9%
	Asian or Pac. Islanders	5,827	7.8%	5,802	7.8%	5,787	7.8%	5,784	7.8%
	Black	12,348	16.6%	12,280	16.5%	12,369	16.6%	12,363	16.7%
	Hispanic	11,222	15.0%	11,355	15.3%	11,697	15.7%	11,773	15.9%
	Ntv Hawaiian/Pac. Islander	91	0.1%	101	0.1%	130	0.2%	153	0.2%
	Other	614	0.8%	590	0.8%	581	0.8%	545	0.7%
	Unknown	522	0.7%	531	0.7%	546	0.7%	555	0.8%
	White	42,466	56.9%	42,175	56.7%	41,821	56.2%	41,371	55.9%
Washington	Am. Indian/Alaskan Ntv	266	0.8%	264	0.8%	238	0.7%	255	0.8%
	Asian or Pac. Islanders	2,033	6.0%	1,985	5.9%	2,020	6.0%	1,990	6.0%
	Black	1,621	4.8%	1,588	4.7%	1,595	4.8%	1,524	4.6%
	Hispanic	10,702	31.5%	10,885	32.5%	10,799	32.2%	11,037	33.5%
	Ntv Hawaiian/Pac. Islander	56	0.2%	74	0.2%	105	0.3%	108	0.3%
	Other	307	0.9%	293	0.9%	277	0.8%	264	0.8%
	Unknown	351	1.0%	358	1.1%	352	1.0%	353	1.1%
	White	18,642	54.9%	18,092	53.9%	17,805	53.1%	17,445	52.9%
Totals	Am. Indian/Alaskan Ntv	8,404	2.2%	8,329	2.2%	8,139	2.1%	8,033	2.1%
	Asian or Pac. Islanders	11,254	3.0%	11,152	2.9%	11,183	2.9%	11,140	3.0%
	Black	18,903	5.0%	18,820	5.0%	18,969	5.0%	18,855	5.0%
	Hispanic	63,553	16.7%	64,549	17.0%	64,973	17.1%	66,049	17.6%
	Ntv Hawaiian/Pac. Islander	544	0.1%	634	0.2%	705	0.2%	746	0.2%
	Other	2,144	0.6%	2,077	0.5%	1,994	0.5%	1,916	0.5%
	Unknown	3,085	0.8%	3,152	0.8%	3,296	0.9%	3,327	0.9%
	White	272,942	71.7%	270,993	71.4%	268,621	70.7%	265,954	70.7%

<sup>1</sup> Enrolled: Eligible for OHP and enrolled in an MHO<sup>2</sup> Percentage formula: n=unique enrolled by ethnicity/d=MHO total enrolled

**TABLE 5: UNIQUE ENROLLED<sup>1</sup> BY ETHNICITY (Continued)**

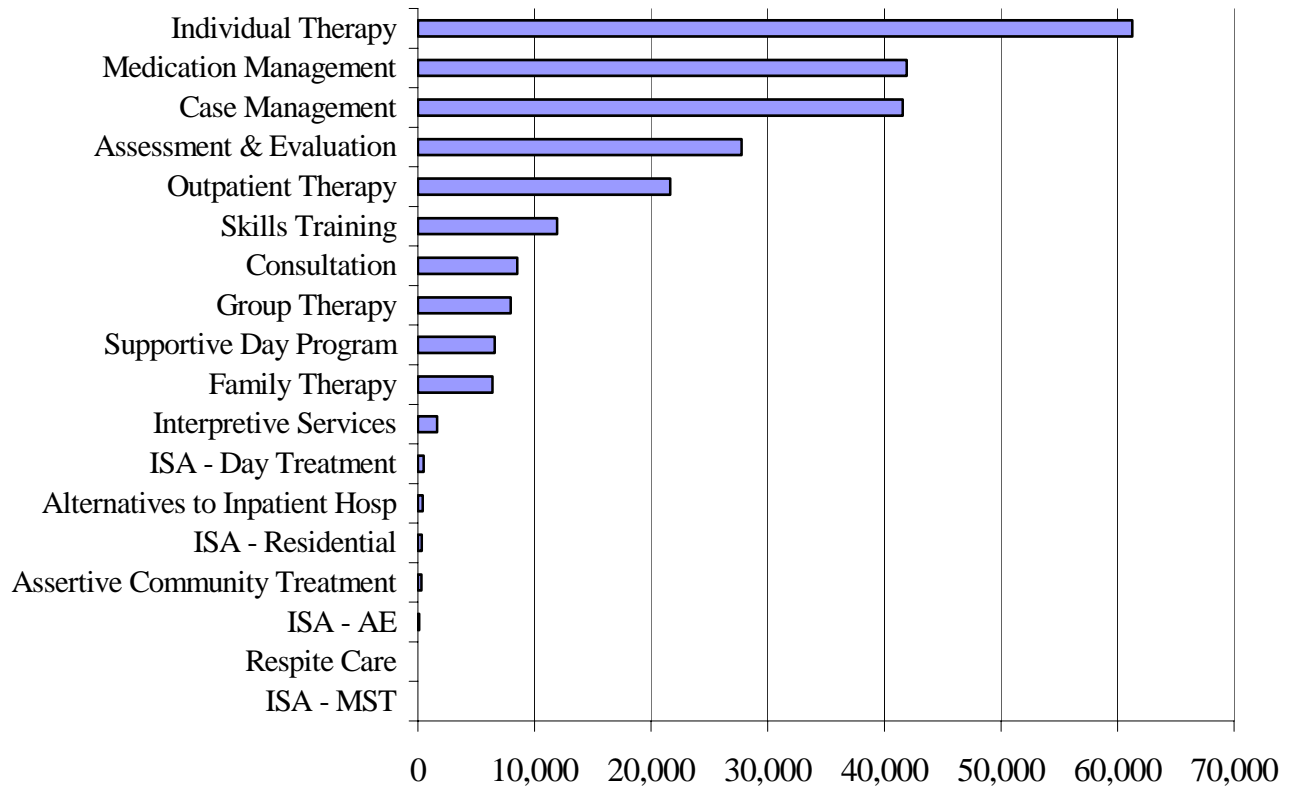
MHO Contractor <sup>s</sup>	Ethnicity	2005						2006	
		4 <sup>th</sup> Qtr	% of MHO Qtr Total	1 <sup>st</sup> Qtr	% of MHO Qtr Total	2 <sup>nd</sup> Qtr	% of MHO Qtr Total	3 <sup>rd</sup> Qtr	% of MHO Qtr Total
All Eligibles <sup>2</sup>	Am. Indian/Alaskan Ntv	10,229	2.4%	10,021	2.4%	10,039	2.4%	9,954	2.4%
	Asian or Pac. Islanders	12,475	2.9%	12,412	2.9%	12,307	2.9%	12,337	2.9%
	Black	19,614	4.6%	19,699	4.7%	19,701	4.7%	19,601	4.7%
	Hispanic	81,836	19.3%	82,195	19.5%	81,935	19.4%	84,029	20.0%
	Ntv Hawaiian/Pac. Islander	677	0.2%	767	0.2%	841	0.2%	916	0.2%
	Other	2,269	0.5%	2,198	0.5%	2,121	0.5%	2,081	0.5%
	Unknown	3,232	0.8%	3,367	0.8%	3,471	0.8%	3,569	0.8%
	White	293,920	69.3%	291,489	69.0%	288,806	68.4%	287,398	68.4%
Fee-For-Service <sup>3</sup> (FFS)	Am. Indian/Alaskan Ntv	1,825	4.2%	1,692	4.0%	1,900	4.6%	1,921	4.4%
	Asian or Pac. Islanders	1,221	2.8%	1,260	3.0%	1,124	2.7%	1,197	2.7%
	Black	711	1.6%	879	2.1%	732	1.8%	746	1.7%
	Hispanic	18,283	42.1%	17,646	41.6%	16,962	41.0%	17,980	41.0%
	Ntv Hawaiian/Pac. Islander	133	0.3%	133	0.3%	136	0.3%	170	0.4%
	Other	125	0.3%	121	0.3%	127	0.3%	165	0.4%
	Unknown	147	0.3%	215	0.5%	175	0.4%	242	0.6%
	White	20,978	48.3%	20,496	48.3%	20,185	48.8%	21,444	48.9%

n=unique enrolled by ethnicity/d=MHO total enrolled

<sup>1</sup> Enrolled: Eligible for OHP and enrolled in an MHO<sup>2</sup> Eligibles: Both Enrolled and FFS<sup>3</sup> Fee-For-Service (FFS): Eligible for OHP and NOT enrolled with an MHO (Open Card)

Unique Served

**FIGURE 4: UNIQUE<sup>1</sup> SERVED BY MHO**



**TABLE 6: UNIQUE SERVED BY MHO AND PERCENTAGE RATE<sup>2</sup>**

MHO Contractors	2005						2006	
	4 <sup>th</sup> Qtr	% Rate	1 <sup>st</sup> Qtr	% Rate	2 <sup>nd</sup> Qtr	% Rate	3 <sup>rd</sup> Qtr	% Rate
ABHA	1,927	7.1%	1,633	6.0%	1,434	5.3%	146	0.5%
Clackamas	1,823	7.0%	1,705	6.5%	1,738	6.6%	1,586	6.1%
FamilyCare	749	6.2%	706	6.0%	516	4.6%	481	4.4%
GOBHI	2,310	7.3%	2,065	6.5%	2,062	6.6%	840	2.6%
JBH	4,232	6.3%	4,357	6.6%	2,801	4.3%	84	0.1%
LaneCare	3,852	10.6%	3,530	9.8%	3,618	10.1%	3,749	10.5%
MVBCN	5,624	7.8%	5,229	7.2%	4,902	6.7%	4,860	6.7%
Verity	6,999	9.4%	6,541	8.8%	5,982	8.0%	4,299	5.8%
Washington	1,210	3.6%	1,339	4.0%	2,059	6.2%	2,068	6.3%
<b>Total Served</b>	<b>28,726</b>	<b>7.5%</b>	<b>27,105</b>	<b>7.1%</b>	<b>25,112</b>	<b>6.6%</b>	<b>18,113</b>	<b>4.8%</b>
FFS	1,091	2.5%	1,103	2.6%	737	1.8%	686	1.6%

<sup>1</sup> Unique Served: All duplicated records are removed.

<sup>2</sup> Percentage Rate Formula: n=Unique Served/d=Unique Enrolled.

Data Source: DSSURS – Data pulled: 6/15/06

C:\MHO Utilization Databases\Quarterly Pulls\Contract 0106-1206\0405-0306 - data pulled 6-15-06\0405-0306 Qtr Report.doc



**TABLE 7: UNIQUE<sup>1</sup> SERVED BY GENDER AND PERCENTAGE<sup>2</sup> RATE**

MHO Contractors	Gender	2005						2006	
		2 <sup>nd</sup> Qtr	Rate	3 <sup>rd</sup> Qtr	Rate	4 <sup>th</sup> Qtr	Rate	1 <sup>st</sup> Qtr	Rate
ABHA	F	1,149	7.3%	989	6.4%	882	5.7%	95	0.6%
	M	778	6.7%	644	5.6%	552	4.8%	51	0.4%
Clackamas	F	999	6.7%	947	6.3%	937	6.3%	857	5.8%
	M	824	7.3%	758	6.7%	801	7.1%	729	6.5%
FamilyCare	F	448	6.5%	435	6.4%	339	5.3%	317	5.0%
	M	301	5.8%	271	5.4%	177	3.7%	164	3.5%
GOBHI	F	1,337	7.4%	1,198	6.7%	1,180	6.6%	482	2.7%
	M	973	7.1%	867	6.4%	882	6.5%	358	2.6%
JBH	F	2,432	6.4%	2,522	6.6%	1,629	4.3%	50	0.1%
	M	1,800	6.3%	1,835	6.5%	1,172	4.2%	34	0.1%
LaneCare	F	2,300	11.0%	2,108	10.2%	2,131	10.3%	2,176	10.6%
	M	1,552	10.1%	1,422	9.3%	1,487	9.7%	1,573	10.4%
MVBCN	F	3,240	7.9%	3,028	7.4%	2,862	6.9%	2,813	6.8%
	M	2,384	7.6%	2,201	7.0%	2,040	6.5%	2,047	6.5%
Verity	F	3,872	9.3%	3,657	8.8%	3,380	8.1%	2,382	5.7%
	M	3,127	9.5%	2,884	8.8%	2,602	7.9%	1,917	5.9%
Washington	F	700	3.6%	772	4.1%	1,213	6.4%	1,180	6.3%
	M	510	3.5%	567	3.9%	846	5.9%	888	6.2%
Total Served	F	16,477	7.6%	15,656	7.3%	14,553	6.8%	10,352	4.8%
	M	12,249	7.4%	11,449	7.0%	10,559	6.5%	7,761	4.8%
Fee-For-Service (FFS)	F	443	1.6%	445	1.7%	350	1.3%	330	1.2%
	M	648	2.4%	658	2.5%	387	1.5%	356	1.3%

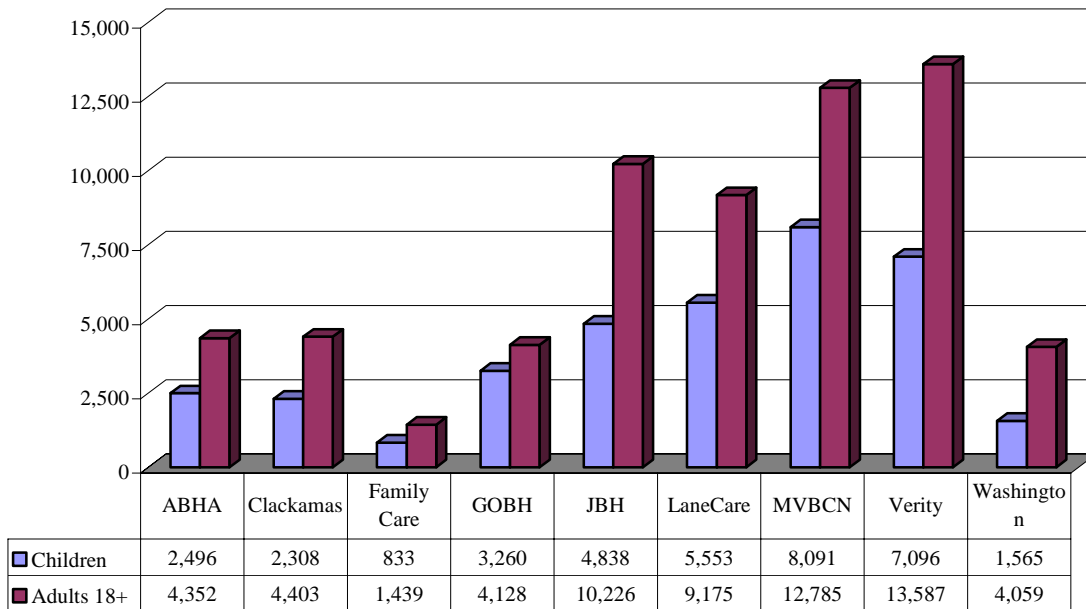
<sup>1</sup> Unique Served: All duplicate records are removed.

<sup>2</sup> Percentage Rate Formula:  $n = \text{Unique Served} / d = \text{Unique Enrolled}$

Data Source: DSSURS – Data Pulled: 6/15/06

C:\MHO Utilization Databases\Quarterly Pulls\Contract 0106-1206\0405-0306 - data pulled 6-15-06\0405-0306 Qtr Report.doc

**FIGURE 5: TOTAL ALL QUARTERS UNIQUE<sup>1</sup> SERVED BY MHO: CHILDREN (0-17) & ADULTS (18+)**



**TABLE 8: UNIQUE SERVED BY MHO: CHILDREN (0-17) AND ADULTS (18+)**

MHO Contractors	Age Groups	2005						2006	
		2 <sup>nd</sup> Qtr	% of MHO Qtr Total <sup>2</sup>	3 <sup>rd</sup> Qtr	% of MHO Qtr Total	4 <sup>th</sup> Qtr	% of MHO Qtr Total	1 <sup>st</sup> Qtr	% of MHO Qtr Total
ABHA	Children	723	37.5%	524	32.1%	469	35.1%	780	40.0%
	Adults	1,204	62.5%	1,109	67.9%	867	64.9%	1,172	60.0%
Clackamas	Children	600	32.9%	550	32.3%	503	36.1%	655	36.6%
	Adults	1,223	67.1%	1,155	67.7%	891	63.9%	1,134	63.4%
FamilyCare	Children	265	35.4%	232	32.9%	91	28.8%	245	33.7%
	Adults	484	64.6%	474	67.1%	225	71.2%	481	66.3%
GOBHI	Children	863	37.4%	755	36.6%	758	41.3%	884	39.2%
	Adults	1,447	62.6%	1,310	63.4%	1,077	58.7%	1,371	60.8%
JBH	Children	1,347	31.8%	1,352	31.0%	621	33.4%	1,518	32.9%
	Adults	2,885	68.2%	3,005	69.0%	1,238	66.6%	3,098	67.1%
LaneCare	Children	1,416	36.8%	1,238	35.1%	1,408	40.0%	1,491	39.0%
	Adults	2,436	63.2%	2,292	64.9%	2,112	60.0%	2,335	61.0%
MVBCN	Children	2,120	37.7%	1,931	36.9%	1,763	40.7%	2,277	40.0%
	Adults	3,504	62.3%	3,298	63.1%	2,574	59.3%	3,409	60.0%
Verity	Children	2,402	34.3%	2,137	32.7%	52	75.4%	2,505	35.4%
	Adults	4,597	65.7%	4,404	67.3%	17	24.6%	4,569	64.6%
Washington	Children	299	24.7%	313	23.4%	635	34.5%	318	25.8%
	Adults	911	75.3%	1,026	76.6%	1,207	65.5%	915	74.2%

<sup>1</sup> Unique Served: All duplicate records are removed.

<sup>2</sup> Percentage formula: n=unique number for children or adults/d=total children and adults

Data Source: DSSURS – Data Pulled: 6/15/06

C:\MHO Utilization Databases\Quarterly Pulls\Contract 0106-1206\0405-0306 - data pulled 6-15-06\0405-0306 Qtr Report.doc

**TABLE 9: UNIQUE<sup>1</sup> SERVED BY MHO/AGE GROUP AND PERCENTAGE<sup>2</sup> RATE**

MHO Contractors	Age Groups	2005						2006	
		2 <sup>nd</sup> Qtr	Rate	3 <sup>rd</sup> Qtr	Rate	4 <sup>th</sup> Qtr	Rate	1 <sup>st</sup> Qtr	Rate
ABHA	0-17	723	4.8%	524	3.4%	485	3.1%	780	5.3%
	18-64	1,154	11.1%	1,058	10.6%	905	9.3%	1,122	10.5%
	65+	50	2.9%	51	3.0%	44	2.5%	50	2.9%
Clackamas	0-17	600	4.0%	550	3.6%	588	3.9%	655	4.4%
	18-64	1,159	12.6%	1,098	12.2%	1,093	12.2%	1,087	11.5%
	65+	64	3.2%	57	2.7%	57	2.6%	47	2.4%
FamilyCare	0-17	265	4.0%	232	3.5%	214	3.4%	245	3.7%
	18-64	478	9.5%	469	9.7%	300	6.7%	476	8.8%
	65+	6	1.8%	5	1.5%	2	0.6%	5	1.4%
GOBHI	0-17	863	4.8%	755	4.2%	788	4.3%	884	5.2%
	18-64	1,375	12.0%	1,236	11.0%	1,204	10.9%	1,297	11.2%
	65+	72	3.2%	74	3.3%	70	3.1%	74	3.3%
JBH	0-17	1,347	3.9%	1,352	3.9%	875	2.5%	1,518	4.5%
	18-64	2,786	10.1%	2,910	10.9%	1,859	7.1%	2,996	10.6%
	65+	99	2.2%	95	2.1%	67	1.5%	102	2.2%
LaneCare	0-17	1,416	7.6%	1,238	6.6%	1,376	7.2%	1,491	8.2%
	18-64	2,361	15.1%	2,226	14.6%	2,173	14.4%	2,271	14.2%
	65+	75	4.0%	66	3.5%	69	3.6%	64	3.3%
MVBCN	0-17	2,120	4.9%	1,931	4.4%	1,885	4.3%	2,277	5.5%
	18-64	3,296	13.2%	3,098	12.6%	2,840	11.7%	3,237	12.6%
	65+	208	4.9%	200	4.7%	177	4.1%	172	4.0%
Verity	0-17	2,402	6.2%	2,137	5.4%	1,880	4.7%	2,505	6.6%
	18-64	4,197	14.3%	4,020	14.0%	3,755	13.2%	4,186	13.9%
	65+	400	6.4%	384	6.2%	347	5.6%	383	6.1%
Washington	0-17	299	1.4%	313	1.5%	706	3.3%	318	1.6%
	18-64	860	8.4%	942	9.7%	1,247	13.2%	868	8.3%
	65+	51	2.1%	84	3.4%	106	4.2%	47	2.0%
Total Served	0-17	10,035	4.7%	9,032	4.2%	8,797	4.1%	10,673	5.2%
	18-64	17,666	12.3%	17,057	12.2%	15,376	11.2%	17,540	11.9%
	65+	1,025	4.0%	1,016	4.0%	939	3.6%	944	3.7%

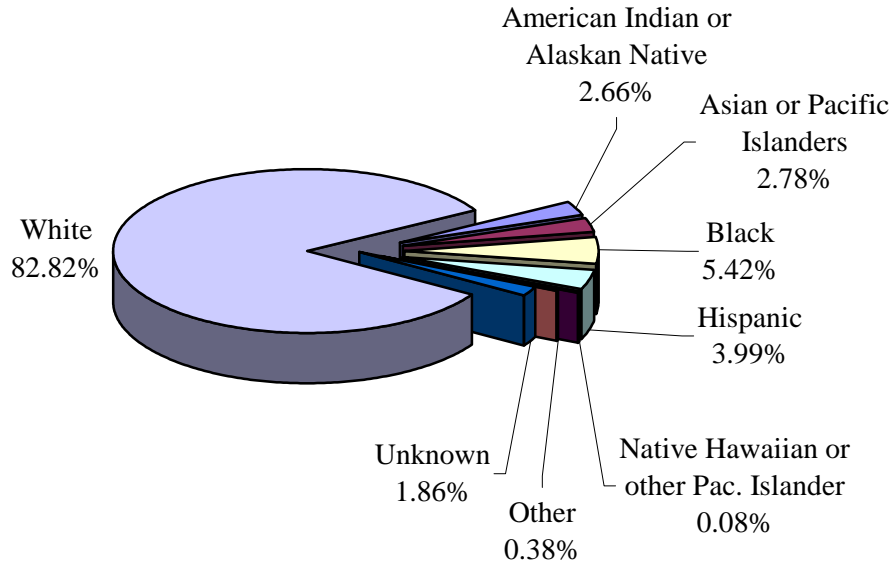
<sup>1</sup> Unique Served: All duplicate records are removed.

<sup>2</sup> Percentage Rate Formula: n=Unique Served/d=Unique Enrolled.

Data Source: DSSURS – Data Pulled: 6/15/06

C:\MHO Utilization Databases\Quarterly Pulls\Contract 0106-1206\0405-0306 - data pulled 6-15-06\0405-0306 Qtr Report.doc

**FIGURE 6: TOTAL UNIQUE<sup>1</sup> SERVED BY ETHNICITY**



**TABLE 10: UNIQUE SERVED BY MHO/ETHNICITY AND PERCENTAGE<sup>2</sup> RATE**

MHO	Race Description	2005				2006			
		2 <sup>nd</sup> Qtr	Rate	3 <sup>rd</sup> Qtr	Rate	4 <sup>th</sup> Qtr	Rate	1 <sup>st</sup> Qtr	Rate
ABHA	Am. Indian/Alaskan Ntv	36	3.0%	32	2.8%	19	1.8%	0	0.0%
	Asian or Pacific Islanders	5	2.0%	5	2.1%	5	2.0%	0	0.0%
	Black	13	5.0%	25	8.6%	18	5.7%	0	0.0%
	Hispanic	42	1.4%	36	1.2%	33	1.0%	3	0.1%
	Ntv Hawaiian/Pac. Islander	1	3.3%	0	0.0%	0	0.0%	0	0.0%
	Other	8	6.3%	6	5.4%	6	5.4%	1	1.0%
	Unknown	24	13.6%	21	13.0%	23	13.7%	3	1.8%
	White	1,798	8.1%	1,508	6.9%	1,330	6.1%	139	0.6%
Clackamas	Am. Indian/Alaskan Ntv	22	5.4%	20	4.8%	27	6.8%	27	6.8%
	Asian or Pacific Islanders	23	4.8%	19	3.9%	16	3.2%	8	1.6%
	Black	34	6.8%	31	5.9%	29	5.3%	32	6.0%
	Hispanic	86	1.8%	72	1.4%	63	1.3%	44	0.9%
	Ntv Hawaiian/Pac. Islander	3	9.4%	2	4.4%	3	5.7%	3	5.0%
	Other	2	1.5%	4	3.3%	4	3.3%	4	3.1%
	Unknown	21	11.1%	17	9.2%	19	9.4%	18	9.1%
	White	1,632	8.3%	1,540	7.9%	1,577	8.1%	1,450	7.6%

<sup>1</sup> Unique Served: All duplicate records are removed.

<sup>2</sup> Percentage Rate Formula: n=Unique Served/d=Unique Enrolled.

Data Source: DSSURS – Data Pulled: 6/15/06

C:\MHO Utilization Databases\Quarterly Pulls\Contract 0106-1206\0405-0306 - data pulled 6-15-06\0405-0306 Qtr Report.doc

**TABLE 10: UNIQUE<sup>1</sup> SERVED BY MHO/ETHNICITY AND PERCENTAGE<sup>2</sup> RATE  
(continued)**

MHO	Race Description	2005				2006			
		4 <sup>th</sup> Qtr	Rate	1 <sup>st</sup> Qtr	Rate	2 <sup>nd</sup> Qtr	Rate	3 <sup>rd</sup> Qtr	Rate
FamilyCare	Am. Indian/Alaskan Ntv	20	10.3%	22	11.7%	20	11.6%	10	6.1%
	Asian or Pacific Islanders	35	4.8%	38	5.3%	26	3.9%	25	3.9%
	Black	75	5.6%	66	5.1%	47	3.8%	39	3.2%
	Hispanic	21	1.6%	19	1.5%	23	1.9%	16	1.3%
	Ntv Hawaiian/Pac. Islander	1	3.7%	0	0.0%	0	0.0%	0	0.0%
	Other	3	2.5%	3	2.6%	3	3.1%	0	0.0%
	Unknown	7	12.7%	7	10.4%	8	11.0%	5	7.5%
	White	587	7.1%	551	6.8%	389	5.1%	386	5.1%
GOBHI	Am. Indian/Alaskan Ntv	54	6.8%	53	6.5%	63	7.9%	18	2.2%
	Asian or Pacific Islanders	7	3.7%	6	3.2%	11	5.9%	3	1.7%
	Black	17	5.5%	18	5.8%	20	6.5%	10	3.2%
	Hispanic	167	2.6%	154	2.3%	144	2.2%	22	0.3%
	Ntv Hawaiian/Pac. Islander	1	3.6%	1	2.4%	1	2.4%	0	0.0%
	Other	7	5.9%	5	4.5%	5	5.5%	2	2.4%
	Unknown	50	18.5%	53	19.4%	40	14.9%	17	5.8%
	White	2,007	8.6%	1,775	7.6%	1,778	7.7%	768	3.3%
JBH	Am. Indian/Alaskan Ntv	126	6.0%	139	6.8%	80	3.9%	2	0.1%
	Asian or Pacific Islanders	14	4.4%	12	3.6%	5	1.5%	1	0.3%
	Black	48	7.3%	51	7.7%	29	4.3%	0	0.0%
	Hispanic	123	2.3%	121	2.1%	82	1.5%	2	0.0%
	Ntv Hawaiian/Pac. Islander	2	2.5%	4	4.3%	3	3.3%	0	0.0%
	Other	15	6.6%	18	7.9%	5	2.2%	0	0.0%
	Unknown	77	12.2%	81	12.1%	51	7.3%	2	0.3%
	White	3,827	6.7%	3,931	6.9%	2,546	4.6%	77	0.1%
LaneCare	Am. Indian/Alaskan Ntv	64	8.9%	67	10.2%	59	9.0%	63	9.5%
	Asian or Pacific Islanders	24	4.8%	25	5.1%	26	5.2%	27	5.4%
	Black	90	10.3%	90	10.4%	89	10.0%	95	10.7%
	Hispanic	91	3.2%	91	3.2%	96	3.3%	107	3.7%
	Ntv Hawaiian/Pac. Islander		0.0%	0	0.0%	2	7.7%	1	2.9%
	Other	16	8.3%	16	8.0%	17	8.9%	18	9.6%
	Unknown	118	27.3%	112	24.7%	119	24.3%	123	24.6%
	White	3,449	11.3%	3,129	10.3%	3,210	10.6%	3,315	11.0%

<sup>1</sup> Unique Served: All duplicate records are removed.<sup>2</sup> Percentage Rate Formula: n=Unique Served/d=Unique Enrolled.

Data Source: DSSURS – Data Pulled: 6/15/06

C:\MHO Utilization Databases\Quarterly Pulls\Contract 0106-1206\0405-0306 - data pulled 6-15-06\0405-0306 Qtr Report.doc

**TABLE 10: UNIQUE<sup>1</sup> SERVED BY MHO/ETHNICITY AND PERCENTAGE<sup>2</sup> RATE  
(continued)**

MHO	Race Description	2005				2006			
		4 <sup>th</sup> Qtr	Rate	1 <sup>st</sup> Qtr	Rate	2 <sup>nd</sup> Qtr	Rate	3 <sup>rd</sup> Qtr	Rate
MVBCN	Am. Indian/Alaskan Ntv	145	11.9%	128	10.3%	136	10.5%	131	10.8%
	Asian or Pac. Islanders	49	5.3%	53	5.8%	46	5.0%	46	4.9%
	Black	111	11.2%	108	10.9%	97	9.6%	86	8.4%
	Hispanic	305	1.7%	244	1.4%	232	1.3%	274	1.5%
	Ntv Hawaiian/Pac. Islander	7	4.2%	9	4.7%	10	5.2%	10	5.2%
	Other	15	4.9%	11	3.6%	13	4.4%	11	3.8%
	Unknown	87	19.1%	86	18.9%	79	16.0%	66	13.8%
	White	4,905	9.7%	4,590	9.1%	4,289	8.5%	4,236	8.5%
Verity	Am. Indian/Alaskan Ntv	298	19.6%	268	17.4%	232	15.5%	178	12.3%
	Asian or Pacific Islanders	552	9.5%	551	9.5%	519	9.0%	120	2.1%
	Black	1,081	8.8%	1,009	8.2%	912	7.4%	676	5.5%
	Hispanic	240	2.1%	226	2.0%	193	1.6%	157	1.3%
	Ntv Hawaiian/Pac. Islander	1	1.1%	0	0.0%	2	1.5%	2	1.3%
	Other	34	5.5%	26	4.4%	22	3.8%	23	4.2%
	Unknown	87	16.7%	88	16.6%	95	17.4%	75	13.5%
	White	4,706	11.1%	4,373	10.4%	4,007	9.6%	3,068	7.4%
Washington	Am. Indian/Alaskan Ntv	11	4.1%	11	4.2%	29	12.2%	26	10.2%
	Asian or Pacific Islanders	97	4.8%	117	5.9%	121	6.0%	119	6.0%
	Black	65	4.0%	65	4.1%	95	6.0%	100	6.6%
	Hispanic	63	0.6%	72	0.7%	135	1.3%	158	1.4%
	Ntv Hawaiian/Pac. Islander	1	1.8%	1	1.4%	3	2.9%	3	2.8%
	Other	10	3.3%	11	3.8%	17	6.1%	17	6.4%
	Unknown	15	4.3%	18	5.0%	61	17.3%	72	20.4%
	White	948	5.1%	1,044	5.8%	1,598	9.0%	1,573	9.0%
Total Served	Am. Indian/Alaskan Ntv	776	9.2%	740	8.9%	665	8.2%	455	5.7%
	Asian or Pacific Islanders	806	7.2%	826	7.4%	775	6.9%	349	3.1%
	Black	1,534	8.1%	1,463	7.8%	1,336	7.0%	1,038	5.5%
	Hispanic	1,138	1.8%	1,035	1.6%	1,001	1.5%	783	1.2%
	Ntv Hawaiian/Pac. Islander	17	3.1%	17	2.7%	24	3.4%	19	2.5%
	Other	110	5.1%	100	4.8%	92	4.6%	76	4.0%
	Unknown	486	15.8%	483	15.3%	495	15.0%	381	11.5%
	White	23,859	8.7%	22,441	8.3%	20,724	7.7%	15,012	5.6%

<sup>1</sup> Unique Served: All duplicate records are removed.

<sup>2</sup> Percentage Rate Formula: n=Unique Served/d=Unique Enrolled.

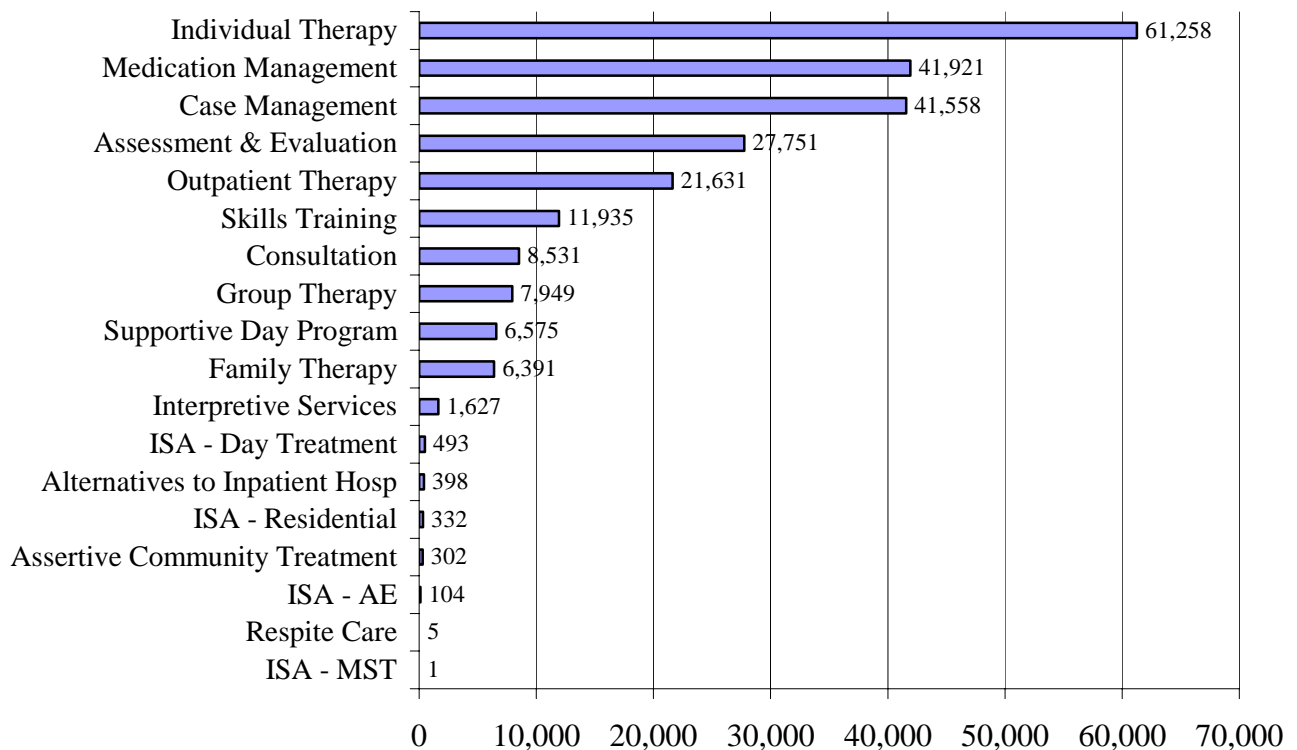
Data Source: DSSURS – Data Pulled: 6/15/06

C:\MHO Utilization Databases\Quarterly Pulls\Contract 0106-1206\0405-0306 - data pulled 6-15-06\0405-0306 Qtr Report.doc

**TABLE 10: UNIQUE<sup>1</sup> SERVED BY MHO/ETHNICITY AND PERCENTAGE<sup>2</sup> RATE**  
(continued)

MHO	Race Description	2005				2006			
		2 <sup>nd</sup> Qtr	Rate	3 <sup>rd</sup> Qtr	Rate	4 <sup>th</sup> Qtr	Rate	1 <sup>st</sup> Qtr	Rate
FFS	Am. Indian/Alaskan Ntv	102	5.6%	111	6.6%	72	3.8%	62	3.2%
	Asian or Pacific Islanders	9	0.7%	9	0.7%	7	0.6%	8	0.7%
	Black	60	8.4%	54	6.1%	34	4.6%	29	3.9%
	Hispanic	30	0.2%	22	0.1%	16	0.1%	15	0.1%
	Ntv Hawaiian/Pac. Islander	0	0.0%	0	0.0%	0	0.0%	0	0.0%
	Other	1	0.8%	4	3.3%	2	1.6%	2	1.2%
	Unknown	34	23.1%	33	15.3%	4	2.3%	4	1.7%
	White	855	4.1%	870	4.2%	602	3.0%	566	2.6%

**FIGURE 7: TOTAL ALL QUARTERS: UNIQUE<sup>1</sup> ENCOUNTERS BY SERVICE CATEGORIES**



<sup>1</sup> Unique Served: All duplicate records are removed.

<sup>2</sup> Percentage Rate Formula: n=Unique Served/d=Unique Enrolled.

<sup>1</sup> Unique: All duplicate records are removed.

Data Source: DSSURS – Data Pulled: 6/15/06

C:\MHO Utilization Databases\Quarterly Pulls\Contract 0106-1206\0405-0306 - data pulled 6-15-06\0405-0306 Qtr Report.doc

**TABLE 11: UNIQUE ENCOUNTERS<sup>2</sup> BY MHO/SERVICE CATEGORIES  
(ABHA & CLACKAMAS)**

MHO Contractors	Service Categories	2005			2006
		2 <sup>nd</sup> Qtr	3 <sup>rd</sup> Qtr	4 <sup>th</sup> Qtr	1 <sup>st</sup> Qtr
ABHA	Alternatives to Inpatient Hosp	0	0	0	0
	Assertive Community Treatment	14	16	20	0
	Assessment & Evaluation	675	507	505	49
	Case Management	685	583	508	40
	Consultation	257	183	197	22
	Family Therapy	146	92	116	9
	Group Therapy	231	157	142	18
	Individual Therapy	1,500	1,448	1,062	176
	Interpretive Services	1	0	0	0
	ISA - AE	0	0	0	0
	ISA - Day Treatment	0	0	0	0
	ISA - MST	0	0	0	0
	ISA - Residential	24	24	0	0
	Medication Management	630	390	384	7
	Outpatient Therapy	317	245	178	29
	Respite Care	0	0	0	0
	Skills Training	71	73	48	0
	Supportive Day Program	93	91	82	15
Clackamas	Alternatives to Inpatient Hosp	3	3	0	0
	Assertive Community Treatment	0	0	0	0
	Assessment & Evaluation	568	488	508	458
	Case Management	982	938	1,101	965
	Consultation	245	215	227	209
	Family Therapy	50	40	31	27
	Group Therapy	110	115	123	134
	Individual Therapy	854	779	812	657
	Interpretive Services	6	5	3	0
	ISA - AE	0	0	0	0
	ISA - Day Treatment	0	0	2	0
	ISA - MST	0	0	0	0
	ISA - Residential	13	8	5	0
	Medication Management	638	625	689	562
	Outpatient Therapy	326	286	227	244
	Respite Care	0	0	0	0
	Skills Training	139	113	103	115
	Supportive Day Program	66	68	75	71

<sup>2</sup> Encounters: A contact or admission for covered services to OHP Member

Data Source: DSSURS – Data Pulled: 6/15/06

C:\MHO Utilization Databases\Quarterly Pulls\Contract 0106-1206\0405-0306 - data pulled 6-15-06\0405-0306 Qtr Report.doc



**TABLE 11: UNIQUE<sup>1</sup> ENCOUNTERS<sup>2</sup> BY MHO/SERVICE CATEGORIES  
(FAMILYCARE & GOBHI) (Continued)**

MHO Contractors	Service Categories	2005			2006
		2 <sup>nd</sup> Qtr	3 <sup>rd</sup> Qtr	4 <sup>th</sup> Qtr	1 <sup>st</sup> Qtr
FamilyCare	Alternatives to Inpatient Hosp	2	1	0	191
	Assertive Community Treatment	0	0	0	0
	Assessment & Evaluation	229	224	193	0
	Case Management	268	236	141	114
	Consultation	44	48	40	37
	Family Therapy	45	53	52	43
	Group Therapy	62	36	30	38
	Individual Therapy	440	408	391	369
	Interpretive Services	20	14	15	14
	ISA - AE	7	4	2	2
	ISA - Day Treatment	0	0	2	1
	ISA - MST	0	0	0	0
	ISA - Residential	0	0	1	2
	Medication Management	251	252	69	78
	Outpatient Therapy	135	116	114	103
	Respite Care	0	0	0	0
	Skills Training	76	74	23	26
	Supportive Day Program	43	49	9	11
GOBHI	Alternatives to Inpatient Hosp	0	1	0	0
	Assertive Community Treatment	61	31	22	3
	Assessment & Evaluation	1,036	847	811	298
	Case Management	1,048	949	972	483
	Consultation	212	218	236	112
	Family Therapy	178	142	120	53
	Group Therapy	183	134	152	68
	Individual Therapy	1,351	1,236	1,249	471
	Interpretive Services	5	6	6	0
	ISA - AE	0	0	0	0
	ISA - Day Treatment	0	0	18	0
	ISA - MST	0	0	0	1
	ISA - Residential	0	0	0	0
	Medication Management	807	904	887	248
	Outpatient Therapy	529	401	346	137
	Respite Care	1	2	2	0
	Skills Training	367	488	449	176
	Supportive Day Program	167	140	177	38

<sup>1</sup> Unique Served: All duplicate records are removed.<sup>2</sup> Encounters: A contact or admission for covered services to OHP Member.

Data Source: DSSURS – Data Pulled: 6/15/06

C:\MHO Utilization Databases\Quarterly Pulls\Contract 0106-1206\0405-0306 - data pulled 6-15-06\0405-0306 Qtr Report.doc

**TABLE 11: UNIQUE<sup>1</sup> ENCOUNTERS<sup>2</sup> BY MHO/SERVICE CATEGORIES  
(JBH & LANE CARE) (Continued)**

MHO Contractors	Service Categories	2005			2006
		2 <sup>nd</sup> Qtr	3 <sup>rd</sup> Qtr	4 <sup>th</sup> Qtr	1 <sup>st</sup> Qtr
JBH	Alternatives to Inpatient Hosp	19	24	8	0
	Assertive Community Treatment	0	0	0	0
	Assessment & Evaluation	1,391	1,348	591	19
	Case Management	1,445	1,734	1,135	19
	Consultation	272	357	154	1
	Family Therapy	258	260	111	0
	Group Therapy	271	270	163	0
	Individual Therapy	1,945	2,110	982	53
	Interpretive Services	0	2	2	0
	ISA - AE	20	18	0	0
	ISA - Day Treatment	0	0	0	0
	ISA - MST	0	0	0	0
	ISA - Residential	20	18	0	0
	Medication Management	2,142	2,242	1,008	25
	Outpatient Therapy	768	964	474	14
	Respite Care	0	0	0	0
	Skills Training	254	319	209	3
Supportive Day Program	110	116	49	0	
LaneCare	Alternatives to Inpatient Hosp	18	9	5	5
	Assertive Community Treatment	32	15	10	21
	Assessment & Evaluation	1,292	1,003	919	898
	Case Management	1,095	944	1,034	1,116
	Consultation	187	191	225	223
	Family Therapy	166	120	135	152
	Group Therapy	177	168	185	227
	Individual Therapy	3,490	3,374	3,517	3,616
	Interpretive Services	0	3	5	4
	ISA - AE	0	0	0	0
	ISA - Day Treatment	0	0	33	37
	ISA - MST	0	0	0	0
	ISA - Residential	0	1	8	11
	Medication Management	841	616	647	633
	Outpatient Therapy	1,158	1,184	1,131	1,185
	Respite Care	0	0	0	0
	Skills Training	124	121	207	225
Supportive Day Program	241	239	240	238	

<sup>1</sup> Unique Served: All duplicate records are removed.<sup>2</sup> Encounters: A contact or admission for covered services to OHP Member.

Data Source: DSSURS – Data Pulled: 6/15/06

C:\MHO Utilization Databases\Quarterly Pulls\Contract 0106-1206\0405-0306 - data pulled 6-15-06\0405-0306 Qtr Report.doc

**TABLE 11: UNIQUE<sup>1</sup> ENCOUNTERS<sup>2</sup> BY MHO/SERVICE CATEGORIES  
(MVBCN & VERITY) (Continued)**

MHO Contractors	Service Categories	2005			2006
		2 <sup>nd</sup> Qtr	3 <sup>rd</sup> Qtr	4 <sup>th</sup> Qtr	1 <sup>st</sup> Qtr
MVBCN	Alternatives to Inpatient Hosp	0	0	2	3
	Assertive Community Treatment	1	16	19	21
	Assessment & Evaluation	1,712	1,478	1,579	1,567
	Case Management	2,339	2,090	1,848	1,947
	Consultation	675	596	512	524
	Family Therapy	401	349	337	413
	Group Therapy	429	368	343	315
	Individual Therapy	4,010	3,540	3,437	3,479
	Interpretive Services	1	4	5	2
	ISA - AE	0	0	4	8
	ISA - Day Treatment	0	0	40	41
	ISA - MST	0	0	0	0
	ISA - Residential	0	0	15	15
	Medication Management	3,361	3,215	2,930	2,629
	Outpatient Therapy	1,282	1,136	1,091	1,099
	Respite Care	0	0	0	0
	Skills Training	472	432	402	416
Supportive Day Program	59	66	40	43	
Verity	Alternatives to Inpatient Hosp	17	21	19	17
	Assertive Community Treatment	0	0	0	0
	Assessment & Evaluation	1,538	1,350	1,162	547
	Case Management	3,545	3,377	3,146	2,368
	Consultation	461	347	251	233
	Family Therapy	723	661	599	379
	Group Therapy	961	644	681	429
	Individual Therapy	3,121	2,850	2,535	1,428
	Interpretive Services	409	355	359	3
	ISA - AE	0	0	18	17
	ISA - Day Treatment	18	13	99	86
	ISA - MST	0	0	0	0
	ISA - Residential	55	47	26	16
	Medication Management	3,738	3,477	2,957	1,746
	Outpatient Therapy	1,486	1,416	1,172	881
	Respite Care	0	0	0	0
	Skills Training	1,625	1,575	1,472	1,004
Supportive Day Program	1,082	1,019	896	771	

<sup>1</sup> Unique Served: All duplicate records are removed.<sup>2</sup> Encounters: A contact or admission for covered services to OHP Member.

Data Source: DSSURS – Data Pulled: 6/15/06

C:\MHO Utilization Databases\Quarterly Pulls\Contract 0106-1206\0405-0306 - data pulled 6-15-06\0405-0306 Qtr Report.doc

**TABLE 11: UNIQUE<sup>1</sup> ENCOUNTERS<sup>2</sup> BY MHO/SERVICE CATEGORIES (WASHINGTON & TOTAL) (Continued)**

MHO Contractors	Service Categories	2005			2006
		2 <sup>nd</sup> Qtr	3 <sup>rd</sup> Qtr	4 <sup>th</sup> Qtr	1 <sup>st</sup> Qtr
Washington	Alternatives to Inpatient Hosp	5	6	8	11
	Assertive Community Treatment	0	0	0	0
	Assessment & Evaluation	349	390	595	627
	Case Management	401	419	727	816
	Consultation	119	140	255	306
	Family Therapy	34	25	33	38
	Group Therapy	122	98	155	210
	Individual Therapy	962	933	1,338	1,335
	Interpretive Services	89	103	98	88
	ISA - AE	0	2	0	2
	ISA - Day Treatment	0	0	50	53
	ISA - MST	0	0	0	0
	ISA - Residential	6	5	8	4
	Medication Management	537	536	660	560
	Outpatient Therapy	122	255	532	548
	Respite Care	0	0	0	0
	Skills Training	188	175	203	168
Supportive Day Program	16	37	60	58	
Total Served	Alternatives to Inpatient Hosp	64	65	42	227
	Assertive Community Treatment	108	78	71	45
	Assessment & Evaluation	8,790	7,635	6,863	4,463
	Case Management	11,808	11,270	10,612	7,868
	Consultation	2,472	2,295	2,097	1,667
	Family Therapy	2,001	1,742	1,534	1,114
	Group Therapy	2,546	1,990	1,974	1,439
	Individual Therapy	17,673	16,678	15,323	11,584
	Interpretive Services	531	492	493	111
	ISA - AE	27	24	24	29
	ISA - Day Treatment	18	13	244	218
	ISA - MST	0	0	0	1
	ISA - Residential	118	103	63	48
	Medication Management	12,945	12,257	10,231	6,488
	Outpatient Therapy	6,123	6,003	5,265	4,240
	Respite Care	1	2	2	0
	Skills Training	3,316	3,370	3,116	2,133
Supportive Day Program	1,877	1,825	1,628	1,245	

<sup>1</sup> Unique Served: All duplicate records are removed.

<sup>2</sup> Encounters: A contact or admission for covered services to OHP Member.

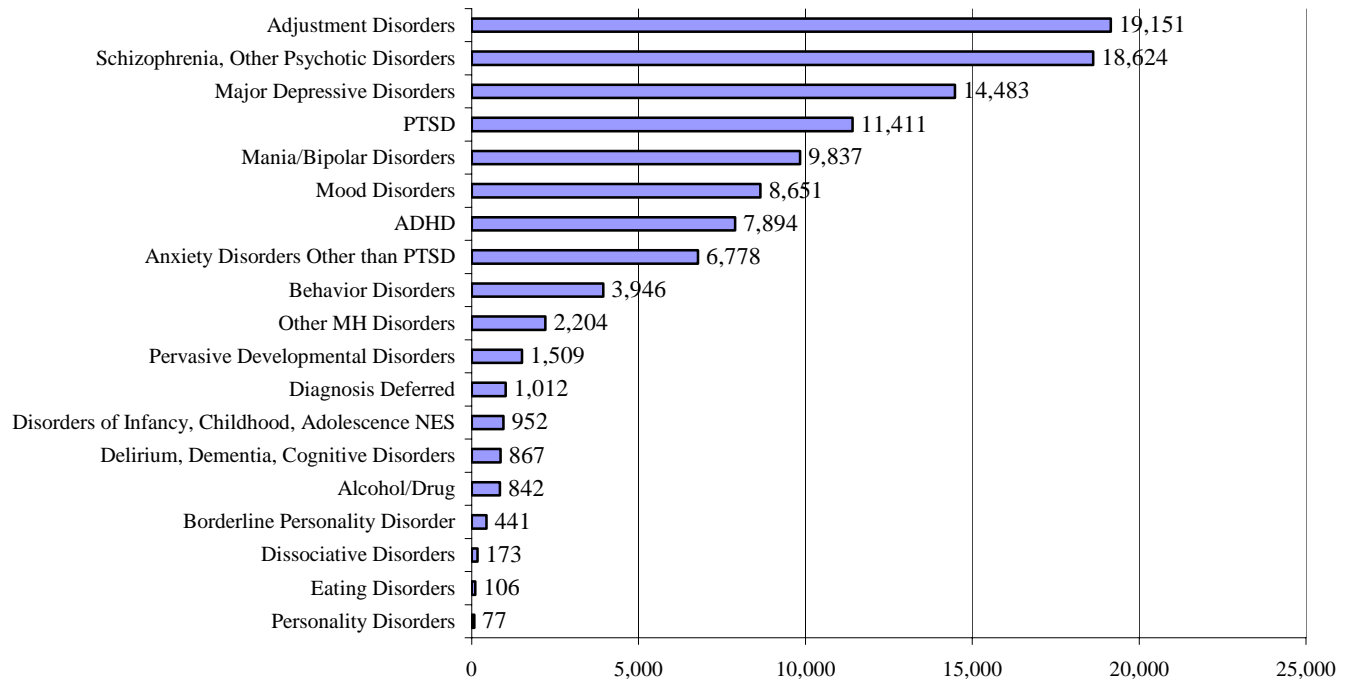
Data Source: DSSURS – Data Pulled: 6/15/06

C:\MHO Utilization Databases\Quarterly Pulls\Contract 0106-1206\0405-0306 - data pulled 6-15-06\0405-0306 Qtr Report.doc

**TABLE 11: UNIQUE<sup>1</sup> ENCOUNTERS<sup>2</sup> BY MHO/SERVICE CATEGORIES (FEE-FOR-SERVICE<sup>3</sup>) (continued)**

MHO Contractors	Service Categories	2005			2006
		4 <sup>th</sup> Qtr	1 <sup>st</sup> Qtr	2 <sup>nd</sup> Qtr	3 <sup>rd</sup> Qtr
FFS	Alternatives to Inpatient Hosp	0	1	5	3
	Assertive Community Treatment	1	0	0	1
	Assessment & Evaluation	100	130	105	88
	Case Management	41	42	37	45
	Consultation	98	130	85	115
	Family Therapy	10	15	8	6
	Group Therapy	137	136	138	130
	Individual Therapy	476	409	432	374
	Interpretive Services	2	2	2	1
	ISA - AE	0	0	0	0
	ISA - Day Treatment	592	590	6	9
	ISA - MST	0	0	0	0
	ISA - Residential	0	0	1	1
	Medication Management	619	601	601	542
	Outpatient Therapy	26	35	26	27
	Respite Care	0	0	0	0
	Skills Training	586	609	574	528
	Supportive Day Program	252	253	261	230

**FIGURE 8: TOTAL ALL QUARTERS: UNIQUE ENCOUNTERS BY DIAGNOSTIC GROUPS**



<sup>1</sup> Unique Served: All duplicate records are removed.

<sup>2</sup> Encounters: A contact or admission for covered services to OHP Member.

<sup>3</sup> Fee-For-Service (FFS): Eligible for OHP and NOT enrolled with an MHO (Open Card)

Data Source: DSSURS – Data Pulled: 6/15/06

C:\MHO Utilization Databases\Quarterly Pulls\Contract 0106-1206\0405-0306 - data pulled 6-15-06\0405-0306 Qtr Report.doc

**TABLE 12: UNIQUE<sup>1</sup> ENCOUNTERS<sup>2</sup> BY MHO/DIAGNOSTIC GROUPS  
(ABHA & CLACKAMAS)**

MHO Contractors	Diagnostic Group	2005			2006
		4 <sup>th</sup> Qtr	1 <sup>st</sup> Qtr	2 <sup>nd</sup> Qtr	3 <sup>rd</sup> Qtr
ABHA	ADHD	157	129	100	9
	Adjustment Disorders	435	329	263	30
	Alcohol/Drug	7	12	7	1
	Anxiety Disorders Other than PTSD	209	194	154	9
	Behavior Disorders	41	38	34	5
	Borderline Personality Disorder	11	10	8	0
	Delirium, Dementia, Cognitive Disorders	20	18	19	4
	Diagnosis Deferred	58	32	30	0
	Disorders of Infancy, Childhood, Adolescence NES	8	8	11	2
	Dissociative Disorders	7	6	5	1
	Eating Disorders	5	6	4	3
	Major Depressive Disorders	236	208	175	17
	Mania/Bipolar Disorders	217	176	154	12
	Mood Disorders	183	168	172	22
	Other MH Disorders	11	12	9	3
	Personality Disorders	8	5	7	0
	Pervasive Developmental Disorders	12	12	18	0
	PTSD	250	190	175	17
	Schizophrenia, Other Psychotic Disorders	294	270	205	12
Clackamas	ADHD	166	158	163	135
	Adjustment Disorders	356	319	317	289
	Alcohol/Drug	62	44	64	46
	Anxiety Disorders Other than PTSD	131	128	130	125
	Behavior Disorders	71	53	75	64
	Borderline Personality Disorder	8	10	11	10
	Delirium, Dementia, Cognitive Disorders	20	16	17	18
	Diagnosis Deferred	12	5	4	3
	Disorders of Infancy, Childhood, Adolescence NES	10	9	18	11
	Dissociative Disorders	1	2	1	1
	Eating Disorders	4	3	2	1
	Major Depressive Disorders	205	207	193	178
	Mania/Bipolar Disorders	126	130	120	99
	Mood Disorders	199	182	173	154
	Other MH Disorders	33	27	48	28
	Personality Disorders	0	2	3	1
	Pervasive Developmental Disorders	25	30	30	24
	PTSD	127	123	140	103
	Schizophrenia, Other Psychotic Disorders	367	360	354	331

<sup>1</sup> Unique Served: All duplicate records are removed.<sup>2</sup> Encounters: A contact or admission for covered services to OHP Member.

Data Source: DSSURS – Data Pulled: 6/15/06

C:\MHO Utilization Databases\Quarterly Pulls\Contract 0106-1206\0405-0306 - data pulled 6-15-06\0405-0306 Qtr Report.doc

**TABLE 12: UNIQUE<sup>1</sup> ENCOUNTERS<sup>2</sup> BY DIAGNOSTIC GROUPS  
(FAMILYCARE & GOBHI) (Continued)**

MHO Contractors	Diagnostic Group	2005			2006
		4 <sup>th</sup> Qtr	1 <sup>st</sup> Qtr	2 <sup>nd</sup> Qtr	3 <sup>rd</sup> Qtr
FamilyCare	ADHD	74	58	51	42
	Adjustment Disorders	129	126	125	84
	Alcohol/Drug	42	49	14	12
	Anxiety Disorders Other than PTSD	68	57	39	47
	Behavior Disorders	35	28	20	28
	Borderline Personality Disorder	1	3	1	0
	Delirium, Dementia, Cognitive Disorders	2	2	1	3
	Diagnosis Deferred	4	1	1	0
	Disorders of Infancy, Childhood, Adolescence NES	4	3	3	6
	Dissociative Disorders	1	1	3	3
	Eating Disorders	2	2	1	0
	Major Depressive Disorders	146	140	121	118
	Mania/Bipolar Disorders	77	72	37	48
	Mood Disorders	81	71	59	57
	Other MH Disorders	17	9	6	8
	Personality Disorders	1	1	0	0
	Pervasive Developmental Disorders	5	5	3	3
	PTSD	77	87	65	65
	Schizophrenia, Other Psychotic Disorders	85	84	38	22
GOBHI	ADHD	290	270	286	128
	Adjustment Disorders	336	289	344	155
	Alcohol/Drug	41	57	40	20
	Anxiety Disorders Other than PTSD	167	159	148	65
	Behavior Disorders	107	121	118	52
	Borderline Personality Disorder	8	9	12	11
	Delirium, Dementia, Cognitive Disorders	16	25	23	9
	Diagnosis Deferred	276	175	143	65
	Disorders of Infancy, Childhood, Adolescence NES	36	31	25	14
	Dissociative Disorders	3	4	3	0
	Eating Disorders	1	1	0	0
	Major Depressive Disorders	282	268	270	100
	Mania/Bipolar Disorders	260	294	265	69
	Mood Disorders	291	285	281	72
	Other MH Disorders	132	189	163	28
	Personality Disorders	3	1	1	0
	Pervasive Developmental Disorders	18	28	31	13
	PTSD	261	219	209	79
	Schizophrenia, Other Psychotic Disorders	405	389	381	115

<sup>1</sup> Unique Served: All duplicate records are removed.

<sup>2</sup> Encounters: A contact or admission for covered services to OHP Member.

Data Source: DSSURS – Data Pulled: 6/15/06

C:\MHO Utilization Databases\Quarterly Pulls\Contract 0106-1206\0405-0306 - data pulled 6-15-06\0405-0306 Qtr Report.doc

**TABLE 12: UNIQUE<sup>1</sup> ENCOUNTERS<sup>2</sup> BY DIAGNOSTIC GROUPS (JBH & LANE CARE) (Continued)**

MHO Contractors	Diagnostic Group	2005			2006
		4 <sup>th</sup> Qtr	1 <sup>st</sup> Qtr	2 <sup>nd</sup> Qtr	3 <sup>rd</sup> Qtr
JBH	ADHD	268	277	171	3
	Adjustment Disorders	708	752	484	7
	Alcohol/Drug	36	37	21	0
	Anxiety Disorders Other than PTSD	266	306	175	5
	Behavior Disorders	199	191	108	6
	Borderline Personality Disorder	26	28	20	0
	Delirium, Dementia, Cognitive Disorders	33	45	26	3
	Diagnosis Deferred	24	18	10	0
	Disorders of Infancy, Childhood, Adolescence NES	27	27	17	1
	Dissociative Disorders	8	7	3	0
	Eating Disorders	6	3	2	0
	Major Depressive Disorders	452	449	231	7
	Mania/Bipolar Disorders	554	578	393	13
	Mood Disorders	444	432	269	10
	Other MH Disorders	118	170	82	4
	Personality Disorders	3	5	3	0
	Pervasive Developmental Disorders	57	60	38	1
	PTSD	396	430	262	10
	Schizophrenia, Other Psychotic Disorders	812	835	603	14
LaneCare	ADHD	258	226	220	241
	Adjustment Disorders	835	779	859	947
	Alcohol/Drug	3	0	0	0
	Anxiety Disorders Other than PTSD	290	297	291	293
	Behavior Disorders	189	157	182	184
	Borderline Personality Disorder	3	3	4	8
	Delirium, Dementia, Cognitive Disorders	4	3	3	5
	Diagnosis Deferred	0	0	0	0
	Disorders of Infancy, Childhood, Adolescence NES	43	40	35	35
	Dissociative Disorders	7	6	7	6
	Eating Disorders	2	1	2	3
	Major Depressive Disorders	511	495	505	508
	Mania/Bipolar Disorders	339	341	343	350
	Mood Disorders	327	331	336	323
	Other MH Disorders	363	107	9	7
	Personality Disorders	0	0	0	0
	Pervasive Developmental Disorders	47	50	56	59
	PTSD	537	507	536	558
	Schizophrenia, Other Psychotic Disorders	572	563	544	549

<sup>1</sup> Unique Served: All duplicate records are removed.

<sup>2</sup> Encounters: A contact or admission for covered services to OHP Member.

Data Source: DSSURS – Data Pulled: 6/15/06

C:\MHO Utilization Databases\Quarterly Pulls\Contract 0106-1206\0405-0306 - data pulled 6-15-06\0405-0306 Qtr Report.doc



**TABLE 12: UNIQUE<sup>1</sup> ENCOUNTERS<sup>2</sup> BY MHO/DIAGNOSTIC GROUPS (MVBCN & VERITY) (Continued)**

MHO Contractors	Diagnostic Group	2005			2006
		4 <sup>th</sup> Qtr	1 <sup>st</sup> Qtr	2 <sup>nd</sup> Qtr	3 <sup>rd</sup> Qtr
MVBCN	ADHD	471	439	409	444
	Adjustment Disorders	1,367	1,237	1,192	1,197
	Alcohol/Drug	6	10	7	22
	Anxiety Disorders Other than PTSD	314	299	300	291
	Behavior Disorders	210	166	134	142
	Borderline Personality Disorder	50	45	51	40
	Delirium, Dementia, Cognitive Disorders	88	84	79	80
	Diagnosis Deferred	1	11	32	1
	Disorders of Infancy, Childhood, Adolescence NES	45	35	39	46
	Dissociative Disorders	16	19	18	15
	Eating Disorders	11	4	3	4
	Major Depressive Disorders	926	915	888	848
	Mania/Bipolar Disorders	518	550	523	503
	Mood Disorders	373	325	294	284
	Other MH Disorders	140	53	38	71
	Personality Disorders	1	1	3	1
	Pervasive Developmental Disorders	118	122	119	103
	PTSD	668	622	579	593
	Schizophrenia, Other Psychotic Disorders	992	1,041	949	857
Verity	ADHD	545	465	428	329
	Adjustment Disorders	1,171	1,016	901	690
	Alcohol/Drug	78	73	22	6
	Anxiety Disorders Other than PTSD	382	364	327	257
	Behavior Disorders	302	242	186	138
	Borderline Personality Disorder	11	12	14	12
	Delirium, Dementia, Cognitive Disorders	36	41	38	21
	Diagnosis Deferred	62	27	17	0
	Disorders of Infancy, Childhood, Adolescence NES	85	93	75	55
	Dissociative Disorders	4	6	4	3
	Eating Disorders	5	6	5	3
	Major Depressive Disorders	1,070	1,035	1,021	552
	Mania/Bipolar Disorders	525	510	502	372
	Mood Disorders	579	515	490	402
	Other MH Disorders	138	108	52	4
	Personality Disorders	10	10	0	4
	Pervasive Developmental Disorders	92	97	89	57
	PTSD	817	767	715	434
	Schizophrenia, Other Psychotic Disorders	1,425	1,399	1,323	1,074

<sup>1</sup> Unique Served: All duplicate records are removed.<sup>2</sup> Encounters: A contact or admission for covered services to OHP Member.

Data Source: DSSURS – Data Pulled: 6/15/06

C:\MHO Utilization Databases\Quarterly Pulls\Contract 0106-1206\0405-0306 - data pulled 6-15-06\0405-0306 Qtr Report.doc

**TABLE 12: UNIQUE<sup>1</sup> ENCOUNTERS<sup>2</sup> BY MHO/DIAGNOSTIC GROUPS  
(WASHINGTON & TOTAL) (Continued)**

MHO Contractors	Diagnostic Group	2005			2006
		4 <sup>th</sup> Qtr	1 <sup>st</sup> Qtr	2 <sup>nd</sup> Qtr	3 <sup>rd</sup> Qtr
Washington	ADHD	71	76	155	182
	Adjustment Disorders	168	163	372	380
	Alcohol/Drug	0	0	2	1
	Anxiety Disorders Other than PTSD	91	94	162	144
	Behavior Disorders	53	60	100	107
	Borderline Personality Disorder	0	1	0	0
	Delirium, Dementia, Cognitive Disorders	10	16	19	20
	Diagnosis Deferred	0	0	0	0
	Disorders of Infancy, Childhood, Adolescence NES	10	9	17	19
	Dissociative Disorders	0	0	1	1
	Eating Disorders	1	3	3	4
	Major Depressive Disorders	228	270	352	356
	Mania/Bipolar Disorders	162	176	215	214
	Mood Disorders	79	88	149	151
	Other MH Disorders	1	4	4	8
	Personality Disorders	0	0	2	1
	Pervasive Developmental Disorders	14	14	31	28
	PTSD	140	155	239	259
	Schizophrenia, Other Psychotic Disorders	289	328	387	356
Total Encounters	ADHD	2,300	2,098	1,983	1,513
	Adjustment Disorders	5,505	5,010	4,857	3,779
	Alcohol/Drug	275	282	177	108
	Anxiety Disorders Other than PTSD	1,918	1,898	1,726	1,236
	Behavior Disorders	1,207	1,056	957	726
	Borderline Personality Disorder	118	121	121	81
	Delirium, Dementia, Cognitive Disorders	229	250	225	163
	Diagnosis Deferred	437	269	237	69
	Disorders of Infancy, Childhood, Adolescence NES	268	255	240	189
	Dissociative Disorders	47	51	45	30
	Eating Disorders	37	29	22	18
	Major Depressive Disorders	4,056	3,987	3,756	2,684
	Mania/Bipolar Disorders	2,778	2,827	2,552	1,680
	Mood Disorders	2,556	2,397	2,223	1,475
	Other MH Disorders	953	679	411	161
	Personality Disorders	26	25	19	7
	Pervasive Developmental Disorders	388	418	415	288
	PTSD	3,273	3,100	2,920	2,118
	Schizophrenia, Other Psychotic Disorders	5,241	5,269	4,784	3,330

<sup>1</sup> Unique Served: All duplicate records are removed.<sup>2</sup> Encounters: A contact or admission for covered services to OHP Member.

Data Source: DSSURS – Data Pulled: 6/15/06

C:\MHO Utilization Databases\Quarterly Pulls\Contract 0106-1206\0405-0306 - data pulled 6-15-06\0405-0306 Qtr Report.doc

**TABLE 12: UNIQUE<sup>1</sup> ENCOUNTERS<sup>2</sup> BY MHO/DIAGNOSTIC GROUPS (FEE-FOR-SERVICE<sup>3</sup>) (Continued)**

MHO Contractors	Diagnostic Group	2005			2006
		4 <sup>th</sup> Qtr	1 <sup>st</sup> Qtr	2 <sup>nd</sup> Qtr	3 <sup>rd</sup> Qtr
FFS	ADHD	127	105	17	24
	Adjustment Disorders	55	71	24	31
	Alcohol/Drug	55	52	67	51
	Anxiety Disorders Other than PTSD	37	23	13	13
	Behavior Disorders	75	77	8	8
	Borderline Personality Disorder	5	5	4	2
	Delirium, Dementia, Cognitive Disorders	9	9	13	8
	Diagnosis Deferred	0	0	0	0
	Disorders of Infancy, Childhood, Adolescence NES	23	28	0	1
	Dissociative Disorders	0	0	0	0
	Eating Disorders	1	0	0	0
	Major Depressive Disorders	54	63	54	44
	Mania/Bipolar Disorders	110	102	89	92
	Mood Disorders	52	78	47	48
	Other MH Disorders	8	16	16	8
	Personality Disorders	0	0	1	0
	Pervasive Developmental Disorders	12	14	3	2
	PTSD	119	112	38	43
	Schizophrenia, Other Psychotic Disorders	455	468	449	396

<sup>1</sup> Unique Served: All duplicate records are removed.

<sup>2</sup> Encounters: A contact or admission for covered services to OHP Member.

<sup>3</sup> Fee-For-Service (FFS): Eligible for OHP and NOT enrolled with an MHO (Open Card)

Data Source: DSSURS – Data Pulled: 6/15/06

# Hospital Data

**TABLE 13: UNIQUE<sup>1</sup> HOSPITAL ADMISSIONS PER 1,000 MEMBERS<sup>2</sup> ENROLLED**

MHO Contractors	2005			2006
	2 <sup>nd</sup> Qtr	3 <sup>rd</sup> Qtr	4 <sup>th</sup> Qtr	1 <sup>st</sup> Qtr
ABHA	1.28	0.59	0.04	0.00
Clackamas	2.25	1.59	0.23	0.00
FamilyCare	1.57	1.86	1.35	1.64
GOBHI	0.85	0.70	0.38	0.00
JBH	2.73	1.78	0.18	0.00
LaneCare	2.68	2.28	3.39	2.41
MVBCN	0.91	0.47	0.80	0.72
Verity	3.22	3.04	3.64	2.00
Washington	2.33	2.77	2.08	1.97
Totals	2.11	1.73	1.50	0.98

(n=Total Admissions/d=Unique Enrolled per 1,000 members)

**TABLE 14: UNIQUE HOSPITAL ADMISSIONS BY AGE GROUPS PER 1,000 MEMBERS**

MHO Contractors	Age Group	2005			2006
		2 <sup>nd</sup> Qtr	3 <sup>rd</sup> Qtr	4 <sup>th</sup> Qtr	1 <sup>st</sup> Qtr
ABHA	0-17	0.27	0.20	0.00	0.00
	18-64	2.93	1.17	0.10	0.00
	65+	0.00	0.58	0.00	0.00
Clackamas	0-17	0.54	0.13	0.07	0.00
	18-64	5.14	4.24	0.55	0.00
	65+	1.49	0.46	0.00	0.00
FamilyCare	0-17	0.60	0.46	0.32	0.16
	18-64	2.93	3.87	2.87	3.83
	65+	0.00	0.00	0.00	0.00
GOBHI	0-17	0.17	0.11	0.11	0.00
	18-64	1.98	1.67	0.90	0.00
	65+	0.43	0.44	0.00	0.00
JBH	0-17	1.00	0.61	0.03	0.00
	18-64	5.18	3.52	0.42	0.00
	65+	0.65	0.22	0.00	0.00
LaneCare	0-17	0.22	0.16	0.32	0.32
	18-64	5.31	4.65	7.11	4.78
	65+	4.65	3.59	4.07	4.66

(n=Total Admissions/d=Unique Enrolled per 1,000 members)

<sup>1</sup> Unique: All duplicated records are removed.<sup>2</sup> Per 1,000 members is the unique number enrolled divided by 1,000

**TABLE 14: UNIQUE<sup>1</sup> HOSPITAL ADMISSIONS BY AGE GROUPS PER 1,000 MEMBERS<sup>2</sup> (continued)**

MHO Contractors	Age Group	2005			2006
		2 <sup>nd</sup> Qtr	3 <sup>rd</sup> Qtr	4 <sup>th</sup> Qtr	1 <sup>st</sup> Qtr
MVBCN	0-17	0.12	0.07	0.18	0.16
	18-64	2.13	1.12	1.96	1.79
	65+	1.61	0.69	0.46	0.46
Verity	0-17	0.70	0.90	0.56	0.55
	18-64	7.03	6.36	8.49	4.40
	65+	0.47	0.79	0.95	0.48
Washington	0-17	0.76	0.66	0.57	0.66
	18-64	5.55	7.41	5.65	5.49
	65+	2.06	2.37	1.18	0.00
Total	0-17	0.50	0.41	0.25	0.23
	18-64	4.57	3.82	3.55	2.25
	65+	1.19	0.95	0.72	0.54

(n=Total Admissions/d=Unique Enrolled per 1,000 members)

**TABLE 15: AVERAGE HOSPITAL DAYS OF SERVICE**

MHO Contractors	2005			2006
	2 <sup>nd</sup> Qtr	3 <sup>rd</sup> Qtr	4 <sup>th</sup> Qtr	1 <sup>st</sup> Qtr
ABHA	5.61	6.28	8.00	0.00
Clackamas	8.70	11.91	8.43	0.00
FamilyCare	12.06	6.56	4.86	8.44
GOBHI	6.00	10.67	8.08	0.00
JBH	5.45	5.99	4.29	0.00
LaneCare	8.02	11.59	8.16	8.41
MVBCN	11.28	13.20	10.24	10.09
Verity	8.74	10.08	8.38	7.10
Washington	8.49	8.38	8.05	8.20
Total	7.89	9.36	8.30	8.06

(n=Sum Days of Service/d=Total Discharges)

<sup>1</sup> Unique: All duplicated records are removed<sup>2</sup> Per 1,000 members is the unique number enrolled divided by 1,000

**TABLE 16: AVERAGE HOSPITAL DAYS BY MHO/AGE GROUP**

MHO Contractors	Age Groups	2005			2006
		2 <sup>nd</sup> Qtr	3 <sup>rd</sup> Qtr	4 <sup>th</sup> Qtr	1 <sup>st</sup> Qtr
ABHA	0-17	6.25	4.00	0.00	0.00
	18-64	5.52	6.79	8.00	0.00
	65+	0.00	0.00	0.00	0.00
Clackamas	0-17	8.86	7.33	7.00	0.00
	18-64	8.40	11.77	8.67	0.00
	65+	12.67	0.00	0.00	0.00
FamilyCare	0-17	4.50	8.00	4.50	9.00
	18-64	13.14	6.20	4.92	8.41
	65+	0.00	0.00	0.00	0.00
GOBHI	0-17	11.00	6.00	12.50	0.00
	18-64	5.55	11.55	7.20	0.00
	65+	0.00	0.00	0.00	0.00
JBH	0-17	7.25	7.50	4.00	0.00
	18-64	5.05	5.69	4.33	0.00
	65+	5.00	4.50	0.00	0.00
LaneCare	0-17	15.00	8.25	6.20	8.43
	18-64	7.10	11.30	7.42	7.93
	65+	16.67	15.88	20.86	11.73
MVBCN	0-17	10.00	10.00	9.20	8.29
	18-64	11.00	13.27	10.44	10.48
	65+	0.00	14.67	10.50	8.00
Verity	0-17	8.15	7.88	6.96	6.52
	18-64	8.81	10.25	8.38	7.02
	65+	9.50	18.60	15.20	12.00
Washington	0-17	9.73	8.53	6.17	7.50
	18-64	7.87	8.04	8.33	8.38
	65+	11.40	11.67	10.00	0.00
Totals	0-17	8.35	7.76	7.12	7.33
	18-64	7.62	9.38	8.17	7.99
	65+	12.58	14.37	16.06	11.39

(n=Sum Days of Service/d=Total Discharges)

**TABLE 17: PERCENT OF HOSPITAL RE-ADMISSION WITHIN 30 DAYS**

MHO Contractors	2005			2006
	2 <sup>nd</sup> Qtr	3 <sup>rd</sup> Qtr	4 <sup>th</sup> Qtr	1 <sup>st</sup> Qtr
ABHA	3.0%	5.6%	0.0%	0.0%
Clackamas	15.1%	21.3%	0.0%	0.0%
FamilyCare	0.0%	8.0%	0.0%	16.7%
GOBHI	16.0%	0.0%	8.3%	0.0%
JBH	6.3%	12.1%	0.0%	0.0%
LaneCare	12.5%	9.6%	15.3%	14.9%
MVBCN	1.8%	5.7%	4.8%	13.2%
Verity	14.0%	10.0%	16.1%	11.4%
Washington	6.8%	8.0%	16.0%	20.3%
Total	9.7%	10.1%	13.5%	14.3%

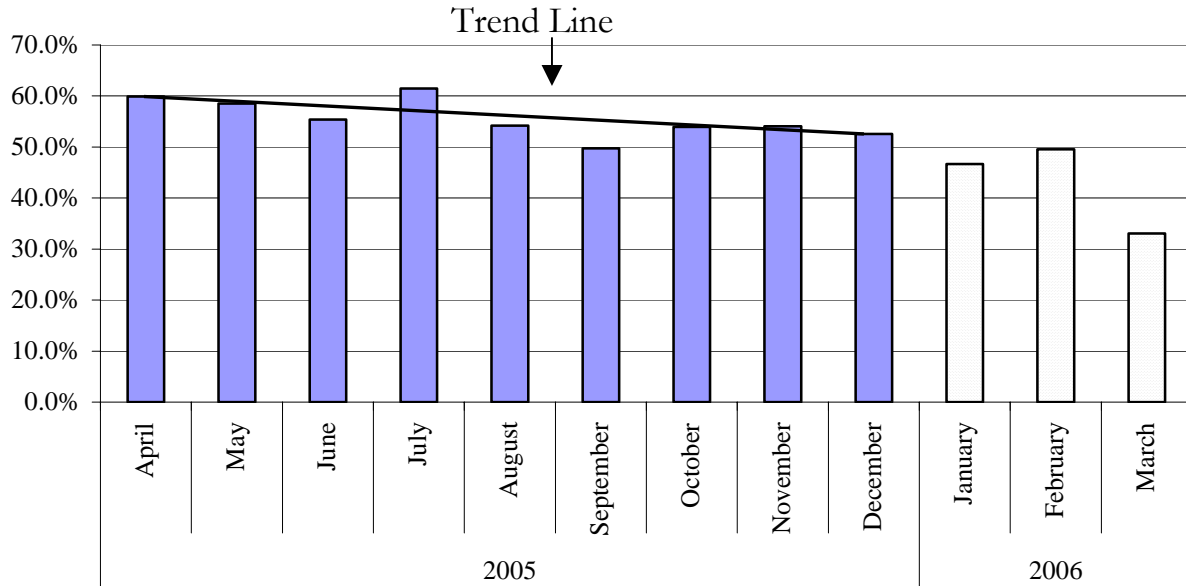
**TABLE 18: TOTAL HOSPITAL RE-ADMISSION WITHIN 180 DAYS**

	2005		
	2 <sup>nd</sup> Qtr	3 <sup>rd</sup> Qtr	4 <sup>th</sup> Qtr
ABHA	6.1%	11.1%	0.0%
Clackamas	17.0%	40.4%	14.3%
FamilyCare	0.0%	20.0%	14.3%
GOBHI	16.0%	4.2%	16.7%
JBH	8.6%	25.0%	14.3%
LaneCare	17.0%	20.5%	27.1%
MVBCN	1.8%	11.4%	9.7%
Verity	15.4%	20.0%	26.3%
Washington	8.1%	17.0%	32.0%
Total	11.6%	20.8%	24.4%

This table does not include the 1<sup>st</sup> Quarter of 2006 in this report due to the 180-day lag in data submission.



**FIGURE 9: TOTAL SEEN BY OUTPATIENT WITHIN 7 DAYS OF HOSPITAL DISCHARGE**  
*(n=number seen within 7 days/d= hospital discharges.)*



There is a 180-lag in data encounter submission. The trend line reflects this lag.

**TABLE 19: SEEN BY OUTPATIENT WITHIN 7 DAYS OF HOSPITAL DISCHARGE**

MHO Contractors	2005			2006
	2 <sup>nd</sup> Qtr	3 <sup>rd</sup> Qtr	4 <sup>th</sup> Qtr	1 <sup>st</sup> Qtr
ABHA	63.6%	66.7%	100.0%	0.0%
Clackamas	67.9%	57.4%	42.9%	0.0%
FamilyCare	62.5%	44.0%	28.6%	16.7%
GOBHI	48.0%	29.2%	41.7%	0.0%
JBH	44.8%	56.5%	50.0%	0.0%
LaneCare	62.5%	56.6%	55.9%	46.8%
MVBCN	61.4%	54.3%	51.6%	47.2%
Verity	70.1%	60.9%	55.5%	36.7%
Washington	33.8%	46.6%	52.0%	58.0%
<b>Total</b>	<b>57.6%</b>	<b>55.4%</b>	<b>53.6%</b>	<b>43.3%</b>

(n=Seen Within 7 days/d=Hospital Discharges)

---

## MHO UTILIZATION REPORT GLOSSARY

**DIAGNOSIS CATEGORY:**

Diagnosis categories are defined by the grouping of diagnoses in the most recent version of the American Psychiatric Association's Diagnostic and Statistical Manual (DSM).

**ELIGIBLE:**

An individual eligible for services under the OHP, but may not be enrolled into an MHO. Includes enrolled and fee-for-service.

**ENCOUNTER:**

An outpatient contact or Acute Inpatient Hospital Psychiatric Care admission for Covered Services provided to an OHP Member.

**ENROLLED (ENROLLEE):**

Eligible for the Oregon Health Plan (OHP) and enrolled in an MHO.

**FEE-FOR-SERVICE (FFS):**

Individuals who are eligible for the OHP, but are not enrolled with an MHO. This is also known as fee-for-service (FFS) or an "open card".

**MENTAL HEALTH ORGANIZATION (MHO):**

A Prepaid Health Plan under contract with DHS to provide Covered Services under the OHP Medicaid Demonstration Project and State Children's Health Insurance Program (SCHIP). MHOs can be FCHPs, CMHPs, or private MHOs or combinations thereof.

**OFFICE OF MENTAL HEALTH AND ADDICTION SERVICES (OMHAS):**

The program office of DHS responsible for the administration of mental health services for the State of Oregon.

**OREGON HEALTH PLAN (OHP):**

Oregon's health care reform effort consisting of a Medicaid Demonstration Project, State Children's Health Insurance Program, an individual insurance program for persons excluded from health insurance coverage due to pre-existing health conditions, and a group insurance program for small businesses. One objective of this reform effort includes universal coverage for Oregonians. In the context of this report, OHP refers to all individuals on FFS.

## **MHO UTILIZATION REPORT GLOSSARY** *(Continued)*

**PERCENT ENROLLEES SERVED:**

This is a general measure of access, but more related to utilization of services. It is a percentage calculated by summing the unique enrollees seen during a given time period and dividing that number by the total enrollees for that time period. For example, if there is 10,000 enrollees statewide in a given month and during that same month 500 of those enrollees receive services, the percent of enrollees served is 5%.

**PERCENTAGE RATE:**

Percent of enrollees served during a given time period.

**SERVICE CATEGORY:**

Service category is a descriptive grouping of service codes (BA, ECC, and CPT) that are similar procedurally.

**UNIQUE SERVED:**

Unduplicated number of individuals receiving mental health services.

**UNIQUE ENCOUNTERS:**

Unduplicated services received by an individual(s) within a specific time period. One individual may have had several services provided – each service would be part of the calculations.

---

## **DIAGNOSTIC CATEGORIES GLOSSARY WITH SPECIFIC DSMIV CODES**

**ADHD:**

314.0; 314.00; 314.01; 314.1; 314.9

**ADJUSTMENT DISORDERS:**

309.00; 309.1; 309.2; 309.21; 309.22; 309.23; 309.24; 309.28; 309.29; 309.3; 309.4;  
309.40; 309.82; 309.83; 309.89; 309.9

**ALCOHOL/DRUG:**

291.3; 291.4; 291.5; 291.81; 291.89; 291.9; 292.0; 292.11; 292.12; 292.2; 292.84;  
292.9; 303.00; 303.01; 303.02; 303.90; 303.91; 303.93; 304.00; 304.01; 304.03; 304.10;  
304.20; 304.23; 304.3; 304.30; 304.31; 304.32; 304.33; 304.40; 304.41; 304.42; 304.43;  
304.70; 304.71; 304.80; 304.81; 304.83; 304.90; 305.00; 305.01; 305.02; 305.03; 305.1;  
305.20; 305.21; 305.22; 305.40; 305.50; 305.60; 305.61; 305.62; 305.70; 305.71;  
305.72; 305.73; 305.91

**ANXIETY DISORDER OTHER THAN PTSD:**

293.84; 300.0; 300.00; 300.01; 300.02; 300.09; 300.10; 300.20; 300.21; 300.22; 300.23;  
300.29; 300.3; 308.3; 308.9

**BEHAVIOR DISORDERS:**

312.00; 312.01; 312.02; 312.30; 312.31; 312.32; 312.34; 312.39; 312.4; 312.8; 312.80;  
312.81; 312.82; 312.89; 312.9; 313.69; 313.81

**BORDERLINE PERSONALITY DISORDERS:**

301.83

**DELIRIUM, DEMENTIA, COGNITIVE DISORDERS:**

290.0; 290.10; 290.11; 290.12; 290.13; 290.20; 290.21; 290.3; 290.40; 290.41; 290.42;  
290.43; 291.0; 291.2; 292.82; 292.83; 292.89; 293.0; 294.0; 294.1; 294.10; 294.11;  
294.8; 294.9; 294.90; 310.1; 310.10; 310.9

**DIAGNOSIS DEFERRED:**

799.9

---

**DIAGNOSTIC CATEGORIES GLOSSARY**  
**WITH SPECIFIC DSM-IV CODES**  
(CONTINUED)

**DISORDERS OF INFANCY, CHILDHOOD, ADOLESCENCE NES:**

299.10; 307.0; 307.20; 307.23; 307.3; 307.6; 307.7; 307.9; 313.23; 313.82; 313.89;  
313.9; 315.00; 315.31; 315.32; 315.39; 315.4; 315.9; 317.0; 318.0; 318.1; 318.2;  
318.81; 319.0; 787.6

**DISSOCIATIVE DISORDERS:**

300.12; 300.13; 300.14; 300.15; 300.6

**EATING DISORDERS:**

307.1; 307.50; 307.51; 307.52; 307.53; 307.59; 780.59

**MAJOR DEPRESSIVE DISORDERS:**

296.2; 296.20; 296.21; 296.22; 296.23; 296.24; 296.25; 296.26; 296.3; 296.30; 296.31;  
296.32; 296.33; 296.34; 296.35; 296.36

**MANIA/BIPOLAR DISORDERS:**

296; 296.0; 296.00; 296.01; 296.02; 296.03; 296.04; 296.05; 296.06; 296.09; 296.10;  
296.12; 296.13; 296.15; 296.4; 296.40; 296.41; 296.42; 296.43; 296.44; 296.45; 296.46;  
296.50; 296.51; 296.52; 296.53; 296.54; 296.55; 296.56; 296.6; 296.60; 296.61; 296.62;  
296.63; 296.64; 296.65; 296.66; 296.7; 296.70; 296.8; 296.80; 296.81; 296.82; 296.89;  
296.9

**MOOD DISORDERS WITHOUT BEHAVIOR, MANIA AND BIPOLAR:**

293.83; 296.09; 296.82; 296.90; 296.99; 300.4; 300.40; 301.13; 309.1; 311; 311.0;  
311.00

**OTHER MENTAL HEALTH (MH) DISORDERS:**

293.89; 293.9; 296.74; 300.11; 300.16; 300.19; 300.7; 300.81; 300.82; 300.9; 302.1;  
302.2; 302.4; 302.70; 302.73; 302.9; 306.3; 307.42; 307.44; 307.45; 307.46; 307.47;  
307.80; 307.89; 307.9; 308.0; 308.1; 308.2; 316; 968.9; 995.2; 995.50; 995.52; 995.53;  
995.54; 995.59; 995.81; 995.83; V610; V611.0; V612.0; V612.1; V618; V619; V628.1;  
V628.2; V628.9; V629; V654.0; V710.1; V710.2; V710.9; V829

**PERSONALITY DISORDERS:**

301.0; 301.12; 301.20; 301.22; 301.3; 301.4; 301.50; 301.6; 301.7; 301.81; 301.82;  
301.84; 301.89; 301.9

---

**DIAGNOSTIC CATEGORIES GLOSSARY**  
**WITH SPECIFIC DSMIV CODES**  
*(Continued)*

**PERVASIVE DEVELOPMENTAL DISORDERS:**

299.0; 299.00; 299.80; 299.81; 299.90

**POST-TRAUMATIC STRESS DISORDER (PTSD):**

309.81

**SCHIZOPHRENIA, OTHER PSYCHOTIC DISORDERS:**

293.81; 293.82; 295.0; 295.00; 295.01; 295.02; 295.03; 295.10; 295.11; 295.12; 295.13;  
295.14; 295.15; 295.20; 295.22; 295.23; 295.24; 295.3; 295.30; 295.31; 295.32; 295.33;  
295.34; 295.35; 295.40; 295.42; 295.43; 295.44; 295.45; 295.50; 295.51; 295.52;  
295.53; 295.54; 295.55; 295.60; 295.61; 295.62; 295.64; 295.65; 295.7; 295.70; 295.71;  
295.72; 295.73; 295.74; 295.75; 295.80; 295.81; 295.82; 295.83; 295.84; 295.85; 295.9;  
294.90; 295.91; 295.92; 295.93; 295.94; 295.95; 297.0; 297.1; 297.2; 297.3; 297.9;  
298.0; 298.3; 298.8; 298.9; 298.90; 299.01

---

## **SERVICE CATEGORIES GLOSSARY WITH SPECIFIC PROCEDURES CODES**

**ALTERNATIVES TO INPATIENT HOSPITALIZATION:**

H0035; H2013

**ASSERTIVE COMMUNITY TREATMENT:**

H0039

**ASSESSMENT & EVALUATION:**90801; 90802; 96100; 99090; 99214; 99222; 99223; 99231; 99232; 99233; 99238;  
99239; BA008; BA010; BA011; H0002; H0031; T1023**CASE MANAGEMENT:**

99371; BA046; BA047; BA147; T1016

**CONSULTATION:**

90882; 90887; 99255; BA017

**CRISIS INTERVENTION:**

S9484

**FAMILY THERAPY:**

90846; 90849; BA013; BA016

**GROUP THERAPY:**

90853; 90857; BA015; BA115

**ISA - AE:**

H0018

**ISA - DAY TREATMENT:**

ECC13; H0037; H2012

**ISA - MST:**

H2033

**ISA - RESIDENTIAL:**

ECC11; H0019

**SERVICE CATEGORIES GLOSSARY WITH  
SPECIFIC PROCEDURES CODES**  
*(Continued)*

**INDIVIDUAL THERAPY:**

90804; 90805; 90806; 90807; 90808; 90809; 90810; 90811; 90812; 90813; 90814;  
90815; BA011; BA111; H0004

**INTERPRETIVE SERVICES:**

T1013

**MEDICATION MANAGEMENT:**

90862; BA019; BA026; BA126; H0034; H2010

**OTHER OUTPATIENT THERAPY:**

90847; 90899; ECC50; H2021; H2022

**RESPIRE CARE:**

ECC20; H0045; S5151; S9125; T1005



## ENROLLMENT NUMBERS PER MONTH

MHO Contractor	Apr-05	May-05	Jun-05	Jul-05	Aug-05	Sep-05	Oct-05	Nov-05	Dec-05	Jan-06	Feb-06	Mar-06
ABHA	23,971	24,256	24,089	24,147	23,799	23,835	23,652	23,423	23,587	23,649	23,902	23,911
Clackamas	22,817	23,062	23,403	23,318	23,383	23,363	23,111	23,030	23,206	22,884	22,705	22,728
FamilyCare	10,499	10,528	10,273	10,468	10,263	10,086	9,898	9,531	9,428	9,407	9,437	9,382
GOBHI	27,796	28,200	28,357	28,190	27,947	27,797	27,687	27,813	28,176	28,099	28,467	28,296
JBH	59,742	60,165	60,236	59,484	58,725	59,226	57,535	57,962	58,949	58,506	58,693	58,366
LaneCare	32,446	32,852	32,808	32,474	32,400	32,217	32,032	32,398	32,404	32,175	32,399	31,962
MVBCN	63,726	64,819	64,998	64,720	64,551	64,671	65,084	65,127	65,373	65,229	65,402	65,134
Verity	66,964	68,057	67,394	67,329	67,085	67,445	67,253	67,132	67,512	67,266	67,233	66,800
Washington	29,524	30,165	29,778	29,466	29,204	29,348	29,118	28,868	29,004	29,165	29,133	28,946
<b>Monthly Totals</b>	<b>337,485</b>	<b>342,104</b>	<b>341,336</b>	<b>339,596</b>	<b>337,357</b>	<b>337,988</b>	<b>335,370</b>	<b>335,284</b>	<b>337,639</b>	<b>336,380</b>	<b>337,371</b>	<b>335,525</b>

% Monthly Increase/Decrease	1.35%	-0.22%	-0.51%	-0.66%	0.19%	-0.78%	-0.03%	0.70%	-0.37%	0.29%	-0.55%
-----------------------------	-------	--------	--------	--------	-------	--------	--------	-------	--------	-------	--------

Eligibles	424,722	424,326	423,706	421,537	422,339	422,571	420,738	418,765	418,161	419,513	419,310	420,831
FFS	87,237	82,222	82,370	81,941	84,982	84,583	85,368	83,481	80,522	83,133	81,939	85,306

## UNIQUE MEMBERS SERVED PER MONTH

MHO Contractors	Apr-05	May-05	Jun-05	Jul-05	Aug-05	Sep-05	Oct-05	Nov-05	Dec-05	Jan-06	Feb-06	Mar-06
ABHA	3,800	3,595	3,980	3,254	2,177	3,230	3,224	2,865	1,211	39	294	358
Clackamas	3,051	3,351	3,387	2,988	3,444	3,031	3,482	3,341	3,063	3,448	2,173	2,359
FamilyCare	1,235	1,270	1,176	1,128	1,340	1,178	925	941	684	946	777	532
GOBHI	5,278	5,709	5,866	4,666	5,568	4,938	5,397	5,250	3,795	2,178	1,799	664
JBH	4,653	8,473	9,350	8,681	9,509	8,334	7,033	1,689	966	241	0	0
LaneCare	8,816	10,099	9,665	8,240	9,020	8,522	10,024	9,779	8,614	10,568	9,878	10,424
MVBCN	10,304	11,096	11,534	9,353	10,504	9,438	9,416	9,488	9,392	9,830	9,215	10,231
Verity	18,572	18,909	18,350	16,124	17,414	16,762	16,944	16,180	13,854	14,548	10,234	2,909
Washington	2,457	3,132	2,775	2,699	2,218	2,601	4,951	5,051	4,440	4,953	4,012	4,349
<b>Total</b>	<b>58,166</b>	<b>65,634</b>	<b>66,083</b>	<b>57,133</b>	<b>61,194</b>	<b>58,034</b>	<b>61,396</b>	<b>54,584</b>	<b>46,019</b>	<b>46,751</b>	<b>38,382</b>	<b>31,826</b>
FFS	9,894	10,602	10,135	10,008	10,137	10,467	6,026	5,636	5,876	5,657	5,101	5,025