

Department of Human Services
Office of Mental Health and Addiction Services

MHO Utilization Quarterly Report

October 2004 through June 2005



Report Produced by
Program Analysis and Evaluation Team
SEPTEMBER 2005

EXECUTIVE SUMMARY
REPORT ON OREGON HEALTH PLAN (OHP)
UTILIZATION AND ENROLLMENT FOR
MENTAL HEALTH SERVICES:
OCTOBER 2004 THROUGH JUNE 2005

The following is a summary of the Mental Health Organization (MHO) Utilization Quarterly Report for the period of October 2004 through June 2005. This report contains enrollment, unique served and hospitalization data. The data for this report were pulled September 12, 2005. All information came from the Office of Medical Assistance Programs' (OMAP) Decision Support/Surveillance and Utilization Review System (DSSURS). There is a 180-day lag in encounter data submissions; this is reflected in the Hospital Data. **Any conclusions drawn from the information should consider lag in data submission into account.**

Previous MHO Utilization Report calculations were based on the total number of records within a specific quarter and divided by three (3) for a monthly average by quarter. However, in this report calculations are based on the total number of unique members for each of the quarters. The diagnosis and service categories within the Unique Served and the Hospital data will be based on the number of unique encounters per quarter.

TABLE OF CONTENTS

The format and contents are constructed as follows:

- Figures are used to illustrate trends in statewide data.
- Tables are used to summarize quarterly data at the MHO level. Some tables include FFS and All Eligibles.



Executive Summaryi

ENROLLMENT DATA:

Figure 1: Enrolled by MHO 1

Table 1: Enrolled by MHO 1

Table 2: Enrolled by Gender:..... 2

Figure 2: Enrolled Children (0-17) And Adults (18+)..... 3

Table 3: Enrolled Children (0-17) And Adults (18+)..... 3

Figure 3: Enrolled by Age Groups 4

Table 4: Enrolled by Age Groups 4

Figure 4: Enrolled by Ethnicity 6

Table 5: Enrolled by Ethnicity 6

SERVICE DATA:

Figure 4: Unique Members Served 10

Table 6: Unique Members Served with Percentage Rate..... 10

Table 7: Unique Members Served by Gender with Percentage Rate..... 11

Figure 5: Unique Members Served Children (0-17) & Adults (18+)..... 12

Table 8: Unique Members Served Children (0-17) and Adults (18+) 12

Table 9: Unique Members Served by Age Groups 13

Figure 6: Percentage of Total Unique Members Served by Ethnicity 14

Table 10: Unique Members Served by Ethnicity with Percentage Rate 14

Figure 7: Total Unique Encounters by Service Categories 17

TABLE OF CONTENTS *(Continued)*

Table 11: Unique Encounters by Service Categories	
ABHA	17
Clackamas & FamilyCare	18
GOBHI & JBH	19
LaneCare & MVBCN	20
Verity & Washington	21
Total Served & Fee-For-Service	22
Figure 8: Total Unique Encounters by Diagnostic Groups.....	23
Table 12: Unique Encounters by Diagnostic Groups	
ABHA	23
Clackamas & FamilyCare	24
GOBHI & JBH	25
LaneCare & MVBCN	26
Verity & Washington	27
Total Encounters & FFS	28

HOSPITAL DATA:

Table 13: Unique Hospital Admissions per 1,000 Members.....	29
Table 14: Unique Hospital Admissions by Age Groups per 1,000 Members	29
Table 15: Total Unique Hospital Days per 1,000 Members	30
Table 16: Total Unique Hospital Days by Age Group per 1,000 Members	31
Table 17: Percent of Hospital Re-Admission within 30 days.....	32
Table 18: Total Hospital Re-Admission within 180 days	32
Figure 9: Enrolled Members Seen within 7 Days of Discharge.....	33
Table 19: Enrolled Members Seen within 7 Days of Discharge.....	33

GLOSSARIES AND MONTHLY NUMBERS:

MHO Utilization Report Glossary	294
Diagnostic Categories Glossary	306
Service Categories Glossary.....	39
Enrollment Numbers per Month	41
Unique Members Served per Month.....	42



Enrollment Data

- ❖ Enrolled: Eligible for OHP and enrolled in an MHO
- ❖ Eligibles: Both Enrolled and FFS
- ❖ Fee-For-Service (FFS): Eligible for OHP and NOT enrolled with an MHO (Open Card)

FIGURE 1: ENROLLED¹: ACTUAL COUNT BY QUARTER

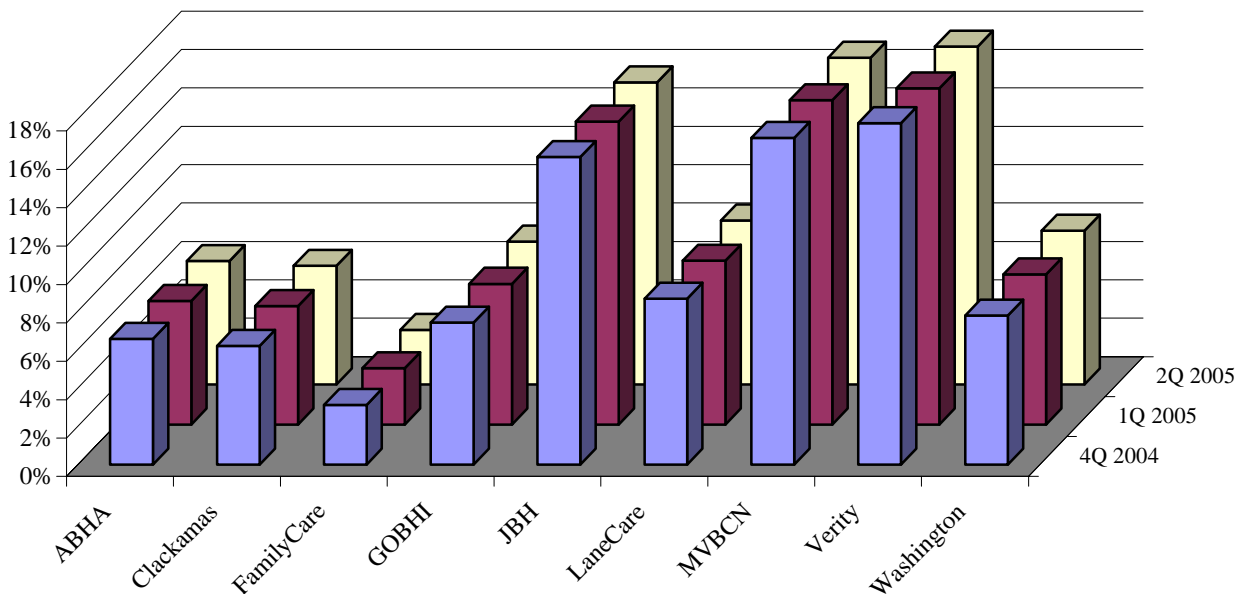


TABLE 1: ENROLLED BY MHO: ACTUAL COUNT BY QUARTER

MHO Contractors	2004		2005			
	4 th Qtr	% Enrolled	1 st Qtr	% Enrolled	2 nd Qtr	% Enrolled
ABHA	28,076	6.5%	27,244	6.4%	27,265	6.4%
Clackamas	26,476	6.2%	26,143	6.2%	26,211	6.2%
FamilyCare	13,302	3.1%	12,399	2.9%	12,074	2.8%
GOBHI	31,681	7.4%	31,021	7.3%	31,597	7.5%
JBH	68,676	16.0%	66,769	15.8%	66,731	15.7%
LaneCare	37,039	8.6%	36,093	8.5%	36,201	8.5%
MVBCN	72,956	17.0%	71,498	16.9%	72,161	17.0%
Verity	76,256	17.8%	74,104	17.5%	74,609	17.6%
Washington	33,280	7.8%	33,071	7.8%	33,976	8.0%
Total Enrolled	387,742	90.4%	378,342	89.4%	380,825	89.9%
All Eligibles ²	428,916	100.0%	423,246	100.0%	423,720	100.0%
Fee-For-Service (FFS) ³	153,447	35.8%	143,147	33.8%	131,399	31.0%

¹ Enrolled: Eligible for OHP and enrolled in an MHO

² Eligibles: Both Enrolled and FFS

³ Fee-For-Service (FFS): Eligible for OHP and NOT enrolled with an MHO (Open Card)

TABLE 2: ENROLLED¹ BY GENDER: ACTUAL COUNT BY QUARTER

MHO Contractors	Gender	2004	2005	
		4 th Qtr	1 st Qtr	2 nd Qtr
ABHA	F	15,954	15,551	15,637
	M	12,122	11,693	11,628
Clackamas	F	15,082	14,910	14,907
	M	11,394	11,233	11,304
FamilyCare	F	7,377	6,955	6,855
	M	5,925	5,444	5,219
GOBHI	F	18,061	17,700	17,971
	M	13,620	13,321	13,626
JBH	F	39,157	38,288	38,210
	M	29,519	28,481	28,521
LaneCare	F	21,289	20,828	20,831
	M	15,750	15,265	15,370
MVBCN	F	41,020	40,425	40,884
	M	31,936	31,073	31,277
Verity	F	42,462	41,342	41,648
	M	33,794	32,762	32,961
Washington	F	18,723	18,681	19,290
	M	14,557	14,390	14,686
Total by Quarter	F	219,125	214,680	216,233
	M	168,617	163,662	164,592
All Eligibles ²	F	138490	128340	128421
	M	81015	72941	74369
Fee-For-Service ³ (FFS)	F	15,954	15,551	15,637
	M	12,122	11,693	11,628

¹ Enrolled: Eligible for OHP and enrolled in an MHO

² Eligibles: Both Enrolled and FFS

³ Fee-For-Service (FFS): Eligible for OHP and NOT enrolled with an MHO (Open Card)

FIGURE 2: ENROLLED¹ CHILDREN (0-17) AND ADULTS (18+): ACTUAL COUNT BY QUARTER

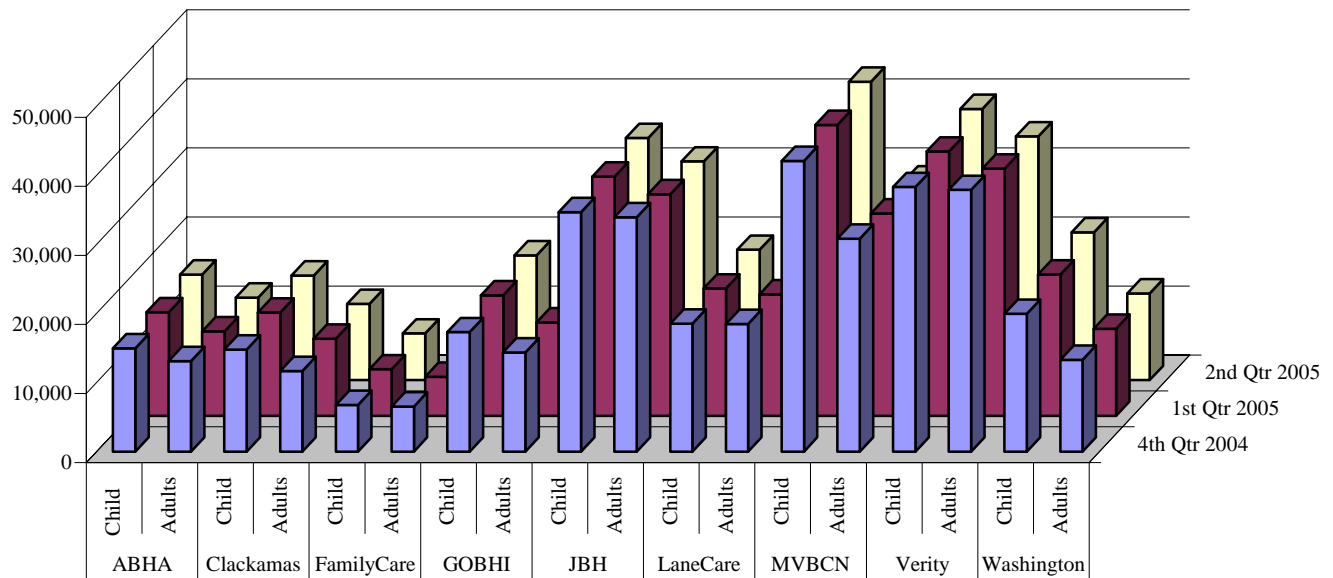


TABLE 3: ENROLLED CHILDREN (0-17) AND ADULTS (18+): ACTUAL COUNT BY QUARTER

MHO Contractors	Age Groups	2004		2005			
		4 th Qtr	% By MHO Qtr Total	1 st Qtr	% By MHO Qtr Total	2 nd Qtr	% by MHO Qtr Total
ABHA	Adults	14,966	53.3%	15,009	55.1%	15,302	56.1%
	Child	13,110	46.7%	12,235	44.9%	11,963	43.9%
Clackamas	Adults	14,799	55.9%	14,956	57.2%	15,168	57.9%
	Child	11,677	44.1%	11,187	42.8%	11,043	42.1%
FamilyCare	Adults	6,761	50.8%	6,751	54.4%	6,761	56.0%
	Child	6,541	49.2%	5,648	45.6%	5,313	44.0%
GOBHI	Adults	17,312	54.6%	17,469	56.3%	18,063	57.2%
	Child	14,369	45.4%	13,552	43.7%	13,534	42.8%
JBH	Adults	34,712	50.5%	34,654	51.9%	35,059	52.5%
	Child	33,964	49.5%	32,115	48.1%	31,672	47.5%
LaneCare	Adults	18,550	50.1%	18,467	51.2%	18,891	52.2%
	Child	18,489	49.9%	17,626	48.8%	17,310	47.8%
MVBCN	Adults	42,116	57.7%	42,173	59.0%	43,225	59.9%
	Child	30,840	42.3%	29,325	41.0%	28,936	40.1%
Verity	Adults	38,338	50.3%	38,287	51.7%	39,292	52.7%
	Child	37,918	49.7%	35,817	48.3%	35,317	47.3%
Washington	Adults	19,967	60.0%	20,470	61.9%	21,406	63.0%
	Child	13,313	40.0%	12,601	38.1%	12,570	37.0%

¹ Enrolled: Eligible for OHP and enrolled in an MHO

FIGURE 3: TOTAL ENROLLED BY AGE GROUPS

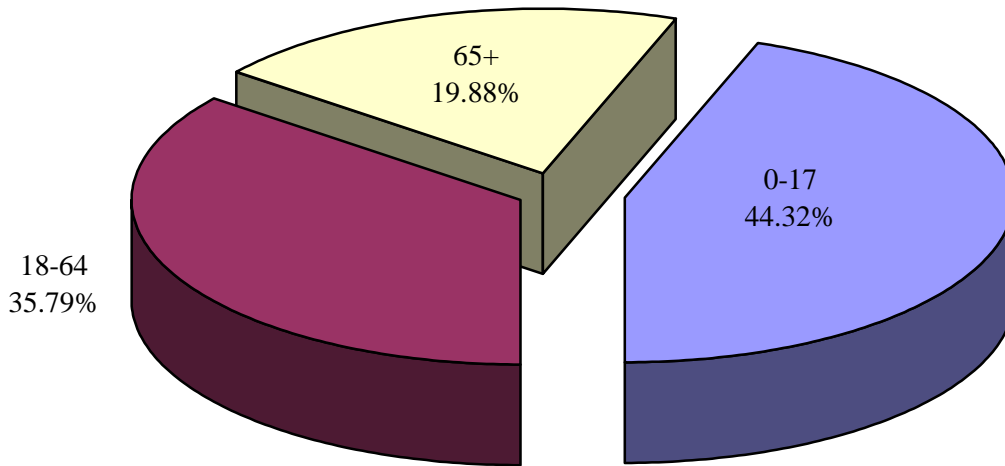


TABLE 4: Enrolled¹ by Age Groups: Actual Count by Quarter

MHO Contractors	Age Groups	2004		2005			
		4 th Qtr	% by MHO Qtr Total	1 st Qtr	% by MHO Qtr Total	2 nd Qtr	% by MHO Qtr Total
ABHA	0-17	14,966	53.3%	15,009	55.1%	15,302	56.1%
	18-64	11,410	40.6%	10,555	38.7%	10,286	37.7%
	65 +	1,700	6.1%	1,680	6.2%	1,677	6.2%
Clackamas	0-17	14,799	55.9%	14,956	57.2%	15,168	57.9%
	18-64	9,751	36.8%	9,264	35.4%	9,093	34.7%
	65 +	1,926	7.3%	1,923	7.4%	1,950	7.4%
FamilyCare	0-17	6,761	50.8%	6,751	54.4%	6,761	56.0%
	18-64	6,213	46.7%	5,318	42.9%	4,982	41.3%
	65 +	328	2.5%	330	2.7%	331	2.7%
GOBHI	0-17	17,312	54.6%	17,469	56.3%	18,063	57.2%
	18-64	12,161	38.4%	11,365	36.6%	11,316	35.8%
	65 +	2,208	7.0%	2,187	7.1%	2,218	7.0%
JBH	0-17	34,712	50.5%	34,654	51.9%	35,059	52.5%
	18-64	29,511	43.0%	27,666	41.4%	27,261	40.9%
	65 +	4,453	6.5%	4,449	6.7%	4,411	6.6%

¹ Enrolled: Eligible for OHP and enrolled in an MHO

TABLE 4: Enrolled¹ by Age Groups: Actual Count by Quarter (continued)

MHO Contractors	Age Groups	2004		2005			
		4 th Qtr	% by MHO Qtr Total	1 st Qtr	% by MHO Qtr Total	2 nd Qtr	% by MHO Qtr Total
LaneCare	0-17	18,550	50.1%	18,467	51.2%	18,891	52.2%
	18-64	16,634	44.9%	15,759	43.7%	15,452	42.7%
	65 +	1,855	5.0%	1,867	5.2%	1,858	5.1%
MVBCN	0-17	42,116	57.7%	42,173	59.0%	43,225	59.9%
	18-64	26,632	36.5%	25,131	35.1%	24,729	34.3%
	65 +	4,208	5.8%	4,194	5.9%	4,207	5.8%
Verity	0-17	38,338	50.3%	38,287	51.7%	39,292	52.7%
	18-64	31,812	41.7%	29,705	40.1%	29,180	39.1%
	65 +	6,106	8.0%	6,112	8.2%	6,137	8.2%
Washington	0-17	19,967	60.0%	20,470	61.9%	21,406	63.0%
	18-64	11,043	33.2%	10,284	31.1%	10,200	30.0%
	65 +	2,270	6.8%	2,317	7.0%	2,370	7.0%
Total by Quarter	0-17	207,521	53.5%	208,236	55.0%	213,167	56.0%
	18-64	155,167	40.0%	145,047	38.3%	142,499	37.4%
	65 +	25,054	6.5%	25,059	6.6%	25,159	6.6%

Note: FFS and Eligibles are not represented in Table 4 due to the unavailable age data.

¹ Enrolled: Eligible for OHP and enrolled in an MHO

FIGURE 4: PERCENTAGE OF TOTAL ENROLLED¹ BY ETHNICITY

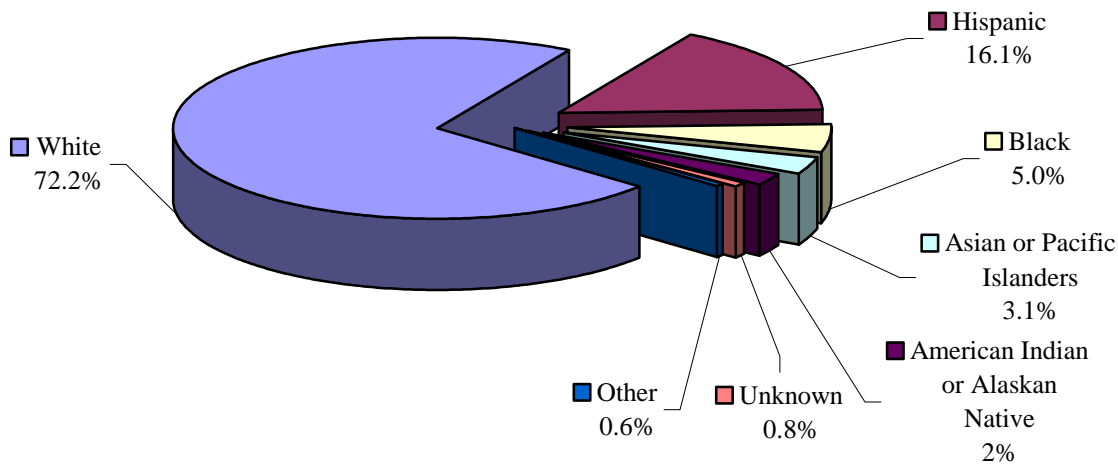


TABLE 5: ENROLLED BY ETHNICITY: ACTUAL COUNT BY QUARTER

MHO Contractors	Ethnicity	2004		2005			
		4 th Qtr	% by MHO Qtr Total	1 st Qtr	% by MHO Qtr Total	2 nd Qtr	% by MHO Qtr Total
ABHA	American Indian / Alaskan Native	1,330	4.7%	1,198	4.4%	1,188	4.4%
	Asian or Pacific Islanders	254	0.9%	251	0.9%	276	1.0%
	Black	264	0.9%	248	0.9%	259	0.9%
	Hispanic	2,781	9.9%	2,848	10.5%	3,010	11.0%
	Other	138	0.5%	133	0.5%	128	0.5%
	Unknown	172	0.6%	179	0.7%	176	0.6%
	White	23,137	82.4%	22,387	82.2%	22,228	81.5%
Clackamas	American Indian / Alaskan Native	392	1.5%	390	1.5%	408	1.6%
	Asian or Pacific Islanders	498	1.9%	523	2.0%	512	2.0%
	Black	483	1.8%	501	1.9%	501	1.9%
	Hispanic	4,613	17.4%	4,675	17.9%	4,847	18.5%
	Other	147	0.6%	141	0.5%	133	0.5%
	Unknown	170	0.6%	175	0.7%	189	0.7%
	White	20,173	76.2%	19,738	75.5%	19,621	74.9%

¹ Enrolled: Eligible for OHP and enrolled in an MHO

TABLE 5: ENROLLED¹ BY ETHNICITY: ACTUAL COUNT BY QUARTER (Continued)

MHO Contractors	Ethnicity	2004		2005			
		4 th Qtr	% of MHO Qtr Total	1 st Qtr	% of MHO Qtr Total	2 nd Qtr	% of MHO Qtr Total
FamilyCare	American Indian / Alaskan Native	192	1.4%	183	1.5%	194	1.6%
	Asian or Pacific Islanders	771	5.8%	726	5.9%	761	6.3%
	Black	1,561	11.7%	1,358	11.0%	1,340	11.1%
	Hispanic	1,308	9.8%	1,345	10.8%	1,292	10.7%
	Other	117	0.9%	106	0.9%	118	1.0%
	Unknown	55	0.4%	58	0.5%	55	0.5%
	White	9,298	69.9%	8,623	69.5%	8,314	68.9%
GOBHI	American Indian / Alaskan Native	795	2.5%	787	2.5%	790	2.5%
	Asian or Pacific Islanders	206	0.7%	207	0.7%	217	0.7%
	Black	325	1.0%	289	0.9%	311	1.0%
	Hispanic	6,088	19.2%	6,193	20.0%	6,527	20.7%
	Other	134	0.4%	122	0.4%	119	0.4%
	Unknown	250	0.8%	243	0.8%	271	0.9%
	White	23,883	75.4%	23,180	74.7%	23,362	73.9%
JBH	American Indian / Alaskan Native	2,112	3.1%	2,091	3.1%	2,096	3.1%
	Asian or Pacific Islanders	423	0.6%	397	0.6%	400	0.6%
	Black	660	1.0%	676	1.0%	662	1.0%
	Hispanic	5,290	7.7%	5,325	8.0%	5,448	8.2%
	Other	249	0.4%	250	0.4%	227	0.3%
	Unknown	573	0.8%	605	0.9%	632	0.9%
	White	59,369	86.4%	57,425	86.0%	57,266	85.8%
LaneCare	American Indian / Alaskan Native	703	1.9%	697	1.9%	719	2.0%
	Asian or Pacific Islanders	550	1.5%	530	1.5%	536	1.5%
	Black	891	2.4%	868	2.4%	870	2.4%
	Hispanic	2,691	7.3%	2,718	7.5%	2,804	7.7%
	Other	206	0.6%	188	0.5%	192	0.5%
	Unknown	391	1.1%	412	1.1%	433	1.2%
	White	31,607	85.3%	30,680	85.0%	30,647	84.7%

¹ Enrolled: Eligible for OHP and enrolled in an MHO

TABLE 5: ENROLLED¹ BY ETHNICITY: ACTUAL COUNT BY QUARTER (Continued)

MHO Contractors	Ethnicity	2004		2005			
		4 th Qtr	% of MHO Qtr Total	1 st Qtr	% of MHO Qtr Total	2 nd Qtr	% of MHO Qtr Total
MVBCN	American Indian / Alaskan Native	1,399	1.9%	1,189	1.7%	1,223	1.7%
	Asian or Pacific Islanders	1,091	1.5%	1,075	1.5%	1,089	1.5%
	Black	1,031	1.4%	1,025	1.4%	991	1.4%
	Hispanic	17,033	23.3%	16,968	23.7%	17,700	24.5%
	Other	328	0.4%	319	0.4%	306	0.4%
	Unknown	439	0.6%	441	0.6%	456	0.6%
	White	51,635	70.8%	50,481	70.6%	50,396	69.8%
Verity	American Indian / Alaskan Native	1,577	2.1%	1,503	2.0%	1,520	2.0%
	Asian or Pacific Islanders	6,145	8.1%	5,972	8.1%	5,918	7.9%
	Black	12,610	16.5%	12,216	16.5%	12,348	16.6%
	Hispanic	10,673	14.0%	10,701	14.4%	11,222	15.0%
	Other	638	0.8%	617	0.8%	614	0.8%
	Unknown	498	0.7%	484	0.7%	522	0.7%
	White	44,115	57.9%	42,611	57.5%	42,465	56.9%
Washington	American Indian / Alaskan Native	289	0.9%	275	0.8%	266	0.8%
	Asian or Pacific Islanders	2,120	6.4%	2,064	6.2%	2,089	6.1%
	Black	1,615	4.9%	1,561	4.7%	1,621	4.8%
	Hispanic	9,773	29.4%	10,072	30.5%	10,701	31.5%
	Other	294	0.9%	299	0.9%	307	0.9%
	Unknown	340	1.0%	344	1.0%	351	1.0%
	White	18,849	56.6%	18,456	55.8%	18,641	54.9%
Totals	American Indian / Alaskan Native	8,789	2.3%	8,313	2.2%	8,404	2.2%
	Asian or Pacific Islanders	12,058	3.1%	11,745	3.1%	11,798	3.1%
	Black	19,440	5.0%	18,742	5.0%	18,903	5.0%
	Hispanic	60,250	15.5%	60,845	16.1%	63,551	16.7%
	Other	2,251	0.6%	2,175	0.6%	2,144	0.6%
	Unknown	2,888	0.7%	2,941	0.8%	3,085	0.8%
	White	282,066	72.7%	273,581	72.3%	272,940	71.7%

¹ Enrolled: Eligible for OHP and enrolled in an MHO

TABLE 5: ENROLLED¹ BY ETHNICITY: ACTUAL COUNT BY QUARTER (Continued)

MHO Contractors	Ethnicity	2004		2005			
		4 th Qtr	% of MHO Qtr Total	1 st Qtr	% of MHO Qtr Total	2 nd Qtr	% of MHO Qtr Total
All Eligibles ²	American Indian / Alaskan Native	11,498	2.5%	10,968	2.4%	10,759	2.4%
	Asian or Pacific Islanders	14,291	3.1%	14,000	3.1%	13,854	3.1%
	Black	21,018	4.6%	20,526	4.5%	20,607	4.6%
	Hispanic	87,646	19.0%	86,927	19.2%	88,198	19.6%
	Other	2,576	0.6%	2,530	0.6%	2,427	0.5%
	Unknown	3,253	0.7%	3,371	0.7%	3,454	0.8%
	White	320,261	69.5%	313,676	69.4%	311,681	69.1%
Fee-For-Service ³ (FFS)	American Indian / Alaskan Native	7,918	3.6%	7,228	3.6%	7,305	3.6%
	Asian or Pacific Islanders	5,470	2.5%	4,727	2.3%	4,614	2.3%
	Black	8,953	4.1%	7,751	3.8%	7,864	3.9%
	Hispanic	23,184	10.5%	19,950	9.9%	20,689	10.2%
	Other	960	0.4%	799	0.4%	808	0.4%
	Unknown	2,412	1.1%	2,371	1.2%	2,508	1.2%
	White	171,125	77.8%	158,955	78.8%	159,546	78.5%

¹ Enrolled: Eligible for OHP and enrolled in an MHO

² Eligibles: Both Enrolled and FFS

³ Fee-For-Service (FFS): Eligible for OHP and NOT enrolled with an MHO (Open Card)

Unique Served

Within Specific Categories

FIGURE 4: UNIQUE¹ MEMBERS SERVED

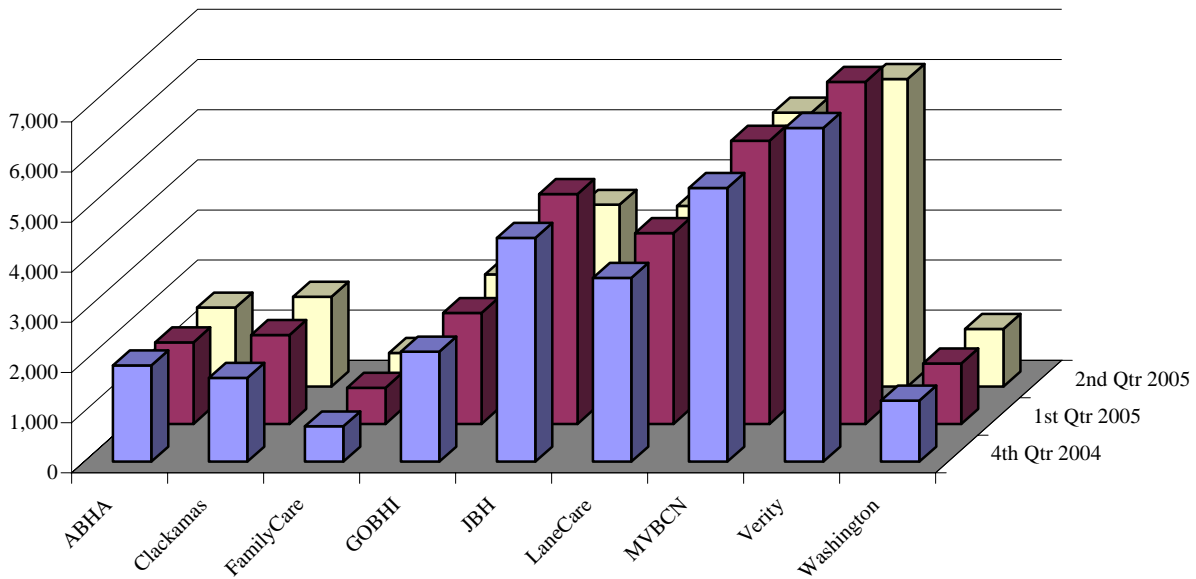


TABLE 6: UNIQUE MEMBERS SERVED AND PERCENTAGE RATE²

MHO Contractors	2004		2005			
	4 th Qtr	Rate	1 st Qtr	Rate	2 nd Qtr	Rate
ABHA	1,919	5.8%	1,626	6.0%	1,576	5.8%
Clackamas	1,670	6.7%	1,776	6.8%	1,795	6.8%
FamilyCare	702	5.4%	723	5.8%	669	5.5%
GOBHI	2,190	7.0%	2,213	7.1%	2,241	7.1%
JBH	4,459	6.7%	4,586	6.9%	3,626	5.4%
LaneCare	3,666	10.3%	3,810	10.6%	3,604	10.0%
MVBCN	5,453	7.7%	5,652	7.9%	5,468	7.6%
Verity	6,655	9.0%	6,826	9.2%	6,134	8.2%
Washington	1,217	3.6%	1,209	3.7%	1,147	3.4%
Total Served	27,931	7.2%	28,421	7.5%	26,260	6.9%
FFS	1,167	0.8%	1,263	0.9%	947	0.7%

¹ Unique Served: All duplicated records are removed.

² Percentage Rate Formula: Unique Served divided by Unique Enrolled.

TABLE 7: UNIQUE¹ MEMBERS SERVED BY GENDER AND PERCENTAGE² RATE

MHO Contractors	Gender	2004		2005			
		4 th Qtr	Rate	1 st Qtr	Rate	2 nd Qtr	Rate
ABHA	F	1,101	6.9%	957	6.2%	957	6.1%
	M	818	6.7%	669	5.7%	619	5.3%
Clackamas	F	920	6.1%	998	6.7%	994	6.7%
	M	750	6.6%	778	6.9%	801	7.1%
FamilyCare	F	412	5.6%	425	6.1%	402	5.9%
	M	290	4.9%	298	5.5%	267	5.1%
GOBHI	F	1,229	6.8%	1,238	7.0%	1,292	7.2%
	M	961	7.1%	975	7.3%	949	7.0%
JBH	F	2,573	6.6%	2,633	6.9%	2,081	5.4%
	M	1,886	6.4%	1,953	6.9%	1,545	5.4%
LaneCare	F	2,138	10.0%	2,224	10.7%	2,138	10.3%
	M	1,528	9.7%	1,586	10.4%	1,466	9.5%
MVBCN	F	3,110	7.6%	3,239	8.0%	3,166	7.7%
	M	2,343	7.3%	2,413	7.8%	2,302	7.4%
Verity	F	3,704	8.7%	3,777	9.1%	3,447	8.3%
	M	2,951	8.7%	3,049	9.3%	2,687	8.2%
Washington	F	693	3.7%	714	3.8%	668	3.5%
	M	524	3.6%	495	3.4%	479	3.3%
Total Served	F	15,880	7.2%	16,205	7.5%	15,145	7.0%
	M	12,051	7.1%	12,216	7.5%	11,115	6.8%
Fee-For-Service (FFS)	F	500	0.4%	548	0.4%	365	0.3%
	M	667	0.8%	715	1.0%	582	0.8%

¹ Unique Served: All duplicate records are removed.

² Percentage Rate Formula: Unique Served divided by Unique Enrolled

FIGURE 5: UNIQUE¹ MEMBERS SERVED CHILDREN (0-17) & ADULTS (18+)

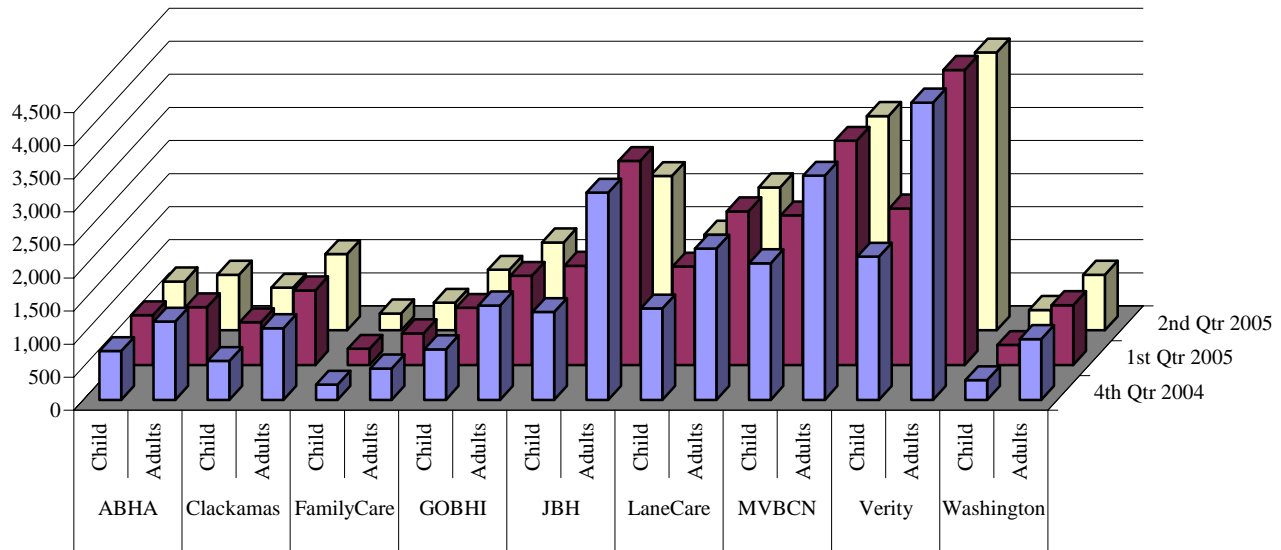


TABLE 8: UNIQUE MEMBERS SERVED CHILDREN (0-17) AND ADULTS (18+)

MHO Contractors	Age Groups	2004		2005			
		4 th Qtr	% of MHO Qtr Total	1 st Qtr	% of MHO Qtr Total	2 nd Qtr	% of MHO Qtr Total
ABHA	Children	738	4.9%	753	5.0%	737	4.9%
	Adults	1,181	9.0%	873	7.1%	839	7.0%
Clackamas	Children	587	4.0%	647	4.3%	644	4.2%
	Adults	1,083	9.3%	1,129	10.1%	1,151	10.4%
FamilyCare	Children	229	3.4%	244	3.6%	254	3.8%
	Adults	473	7.2%	479	8.5%	415	7.8%
GOBHI	Children	764	4.4%	865	5.0%	913	5.1%
	Adults	1,426	9.9%	1,348	9.9%	1,328	9.8%
JBH	Children	1,327	3.8%	1,501	4.3%	1,295	3.7%
	Adults	3,132	9.2%	3,085	9.6%	2,331	7.4%
LaneCare	Children	1,380	7.4%	1,488	8.1%	1,444	7.6%
	Adults	2,286	12.4%	2,322	13.2%	2,160	12.5%
MVBCN	Children	2,064	4.9%	2,262	5.4%	2,231	5.2%
	Adults	3,389	11.0%	3,390	11.6%	3,237	11.2%
Verity	Children	2,163	5.6%	2,366	6.2%	1,936	4.9%
	Adults	4,492	11.8%	4,460	12.5%	4,198	11.9%
Washington	Children	297	1.5%	303	1.5%	308	1.4%
	Adults	919	6.9%	906	7.2%	839	6.7%

¹ Unique Served: All duplicate records are removed.

TABLE 9: UNIQUE¹ MEMBERS SERVED BY AGE GROUP AND PERCENTAGE² RATE

MHO Contractors	Age Groups	2004		2005			
		4 th Qtr	Rate	1 st Qtr	Rate	2 nd Qtr	Rate
ABHA	0-17	738	4.9%	753	5.0%	737	4.8%
	18-64	1,133	9.9%	827	7.8%	801	7.8%
	65+	48	2.8%	46	2.7%	38	2.3%
Clackamas	0-17	587	4.0%	647	4.3%	644	4.2%
	18-64	1,031	10.6%	1,084	11.7%	1,100	12.1%
	65+	52	2.7%	45	2.3%	51	2.6%
FamilyCare	0-17	229	3.4%	244	3.6%	254	3.8%
	18-64	468	7.5%	474	8.9%	411	8.2%
	65+	5	1.5%	5	1.5%	4	1.2%
GOBHI	0-17	764	4.4%	865	5.0%	913	5.1%
	18-64	1,354	11.1%	1,275	11.2%	1,268	11.2%
	65+	72	3.3%	73	3.3%	60	2.7%
JBH	0-17	1,327	3.8%	1,501	4.3%	1,295	3.7%
	18-64	3,030	10.3%	2,986	10.8%	2,279	8.4%
	65+	102	2.3%	99	2.2%	52	1.2%
LaneCare	0-17	1,380	7.4%	1,488	8.1%	1,444	7.6%
	18-64	2,222	13.4%	2,259	14.3%	2,101	13.6%
	65+	64	3.5%	63	3.4%	59	3.2%
MVBCN	0-17	2,064	4.9%	2,262	5.4%	2,231	5.2%
	18-64	3,199	12.0%	3,217	12.8%	3,082	12.5%
	65+	190	4.5%	173	4.1%	155	3.7%
Verity	0-17	2,163	5.6%	2,366	6.2%	1,936	4.9%
	18-64	4,149	13.0%	4,093	13.8%	3,875	13.3%
	65+	343	5.6%	367	6.0%	323	5.3%
Washington	0-17	297	1.7%	303	1.5%	308	1.4%
	18-64	862	2.7%	860	8.4%	799	7.8%
	65+	57	38.0%	46	2.0%	40	1.7%
Total Served	0-17	9,549	4.6%	10,429	5.0%	9,762	4.6%
	18-64	16,883	10.9%	17,075	11.8%	15,716	11.0%
	65+	1,738	6.9%	917	3.7%	782	3.1%

Note: FFS data does not have accurate recipient date of birth and is not included in this specific data table.

¹ Unique Served: All duplicate records are removed.

² Percentage Rate Formula: Unique Served divided by Unique Enrolled.

FIGURE 6: TOTAL ALL QUARTERS: UNIQUE¹ MEMBERS SERVED BY ETHNICITY

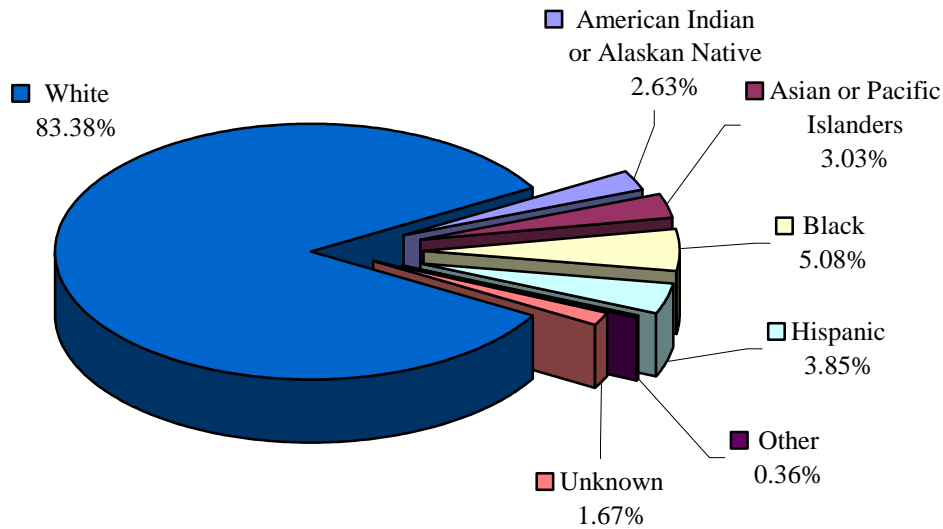


TABLE 10: UNIQUE MEMBERS SERVED BY ETHNICITY AND PERCENTAGE² RATE: ACTUAL COUNT BY QUARTER

MHO Contractors	Race Description	2004		2005			
		4 th Qtr	Rate	1 st Qtr	Rate	2 nd Qtr	Rate
ABHA	American Indian/Alaskan Native	28	2.1%	33	2.8%	32	2.7%
	Asian or Pacific Islanders	9	3.5%	5	2.0%	3	1.1%
	Black	16	6.1%	15	6.0%	11	4.2%
	Hispanic	54	1.9%	41	1.4%	35	1.2%
	Other	7	5.1%	4	3.0%	6	4.7%
	Unknown	29	16.9%	24	13.4%	20	11.4%
	White	1,776	7.7%	1,504	6.7%	1,469	6.6%
Clackamas	American Indian/Alaskan Native	22	5.6%	25	6.4%	21	5.1%
	Asian or Pacific Islanders	26	5.2%	25	4.8%	22	4.3%
	Black	30	6.2%	32	6.4%	31	6.2%
	Hispanic	50	1.1%	73	1.6%	84	1.7%
	Other	5	3.4%	2	1.4%	1	0.8%
	Unknown	19	11.2%	24	13.7%	20	10.6%
	White	1,518	7.5%	1,595	8.1%	1,616	8.2%

¹ Unique Served: All duplicate records are removed.

² Percentage Rate Formula: Unique Served divided by Unique Enrolled.

**TABLE 10: UNIQUE¹ MEMBERS SERVED BY ETHNICITY AND PERCENTAGE²
RATE: ACTUAL COUNT BY QUARTER (*continued*)**

MHO Contractors	Race Description	2004		2005			
		4 th Qtr	Rate	1 st Qtr	Rate	2 nd Qtr	Rate
FamilyCare	American Indian/Alaskan Native	14	7.3%	14	7.7%	17	8.8%
	Asian or Pacific Islanders	29	3.8%	27	3.7%	26	3.4%
	Black	72	4.6%	74	5.4%	68	5.1%
	Hispanic	20	1.5%	28	2.1%	19	1.5%
	Other	1	0.9%	2	1.9%	3	2.5%
	Unknown	6	10.9%	7	12.1%	7	12.7%
	White	560	6.0%	571	6.6%	529	6.4%
GOBHI	American Indian/Alaskan Native	60	7.5%	40	5.1%	54	6.8%
	Asian or Pacific Islanders	9	4.4%	9	4.3%	8	3.7%
	Black	23	7.1%	20	6.9%	15	4.8%
	Hispanic	142	2.3%	138	2.2%	161	2.5%
	Other	4	3.0%	4	3.3%	7	5.9%
	Unknown	34	13.6%	44	18.1%	49	18.1%
	White	1,918	8.0%	1,958	8.4%	1,947	8.3%
JBH	American Indian/Alaskan Native	137	6.5%	134	6.4%	115	5.5%
	Asian or Pacific Islanders	15	3.5%	15	3.8%	12	3.0%
	Black	56	8.5%	50	7.4%	44	6.6%
	Hispanic	121	2.3%	118	2.2%	116	2.1%
	Other	13	5.2%	13	5.2%	14	6.2%
	Unknown	69	12.0%	78	12.9%	72	11.4%
	White	4,048	6.8%	4,178	7.3%	3,253	5.7%
LaneCare	American Indian/Alaskan Native	66	9.4%	64	9.2%	59	8.2%
	Asian or Pacific Islanders	26	4.7%	27	5.1%	24	4.5%
	Black	80	9.0%	81	9.3%	86	9.9%
	Hispanic	94	3.5%	96	3.5%	85	3.0%
	Other	17	8.3%	13	6.9%	15	7.8%
	Unknown	103	26.3%	122	29.6%	120	27.7%
	White	3,280	10.4%	3,407	11.1%	3,215	10.5%

¹ Unique Served: All duplicate records are removed.

² Percentage Rate Formula: Unique Served divided by Unique Enrolled.

**TABLE 10: UNIQUE¹ MEMBERS SERVED BY ETHNICITY AND PERCENTAGE²
RATE: ACTUAL COUNT BY QUARTER (continued)**

MHO Contractors	Race Description	2004		2005			
		4 th Qtr	Rate	1 st Qtr	Rate	2 nd Qtr	Rate
MVBCN	American Indian/Alaskan Native	156	11.2%	145	12.2%	140	11.4%
	Asian or Pacific Islanders	57	5.2%	58	5.4%	55	5.1%
	Black	98	9.5%	119	11.6%	107	10.8%
	Hispanic	310	1.8%	320	1.9%	291	1.6%
	Other	10	3.0%	15	4.7%	15	4.9%
	Unknown	85	19.4%	91	20.6%	86	18.9%
	White	4,737	9.2%	4,904	9.7%	4,774	9.5%
Verity	American Indian/Alaskan Native	238	15.1%	273	18.2%	251	16.5%
	Asian or Pacific Islanders	547	8.9%	550	9.2%	490	8.3%
	Black	972	7.7%	1,000	8.2%	923	7.5%
	Hispanic	215	2.0%	219	2.0%	169	1.5%
	Other	31	4.9%	38	6.2%	31	5.0%
	Unknown	87	17.5%	87	18.0%	63	12.1%
	White	4,565	10.3%	4,659	10.9%	4,207	9.9%
Washington	American Indian/Alaskan Native	14	4.8%	11	4.0%	10	3.8%
	Asian or Pacific Islanders	220	10.4%	112	5.4%	98	4.7%
	Black	58	3.6%	61	3.9%	62	3.8%
	Hispanic	62	0.6%	65	0.6%	58	0.5%
	Other	8	2.7%	10	3.3%	10	3.3%
	Unknown	14	4.1%	11	3.2%	14	4.0%
	White	941	5.0%	939	5.1%	895	4.8%
Total Served	American Indian or Alaskan Native	735	8.4%	739	8.9%	699	8.3%
	Asian or Pacific Islanders	938	7.8%	828	7.0%	738	6.3%
	Black	1,405	7.2%	1,452	7.7%	1,347	7.1%
	Hispanic	1,068	1.8%	1,098	1.8%	1,018	1.6%
	Other	96	4.3%	101	4.6%	102	4.8%
	Unknown	446	15.4%	488	16.6%	451	14.6%
	White	23,343	8.3%	23,715	8.7%	21,905	8.0%
FFS	American Indian or Alaskan Native	42	0.5%	38	0.5%	40	0.5%
	Asian or Pacific Islanders	11	0.2%	12	0.3%	7	0.2%
	Black	58	0.6%	67	0.9%	57	0.7%
	Hispanic	39	0.2%	34	0.2%	25	0.1%
	Other	0	0.0%	0	0.0%	1	0.1%
	Unknown	28	1.2%	33	1.4%	34	1.4%
	White	989	0.6%	1,079	0.7%	783	0.5%

¹ Unique Served: All duplicate records are removed.

² Percentage Rate Formula: Unique Served divided by Unique Enrolled.

FIGURE 7: TOTAL ALL QUARTERS: UNIQUE¹ ENCOUNTERS BY SERVICE CATEGORIES

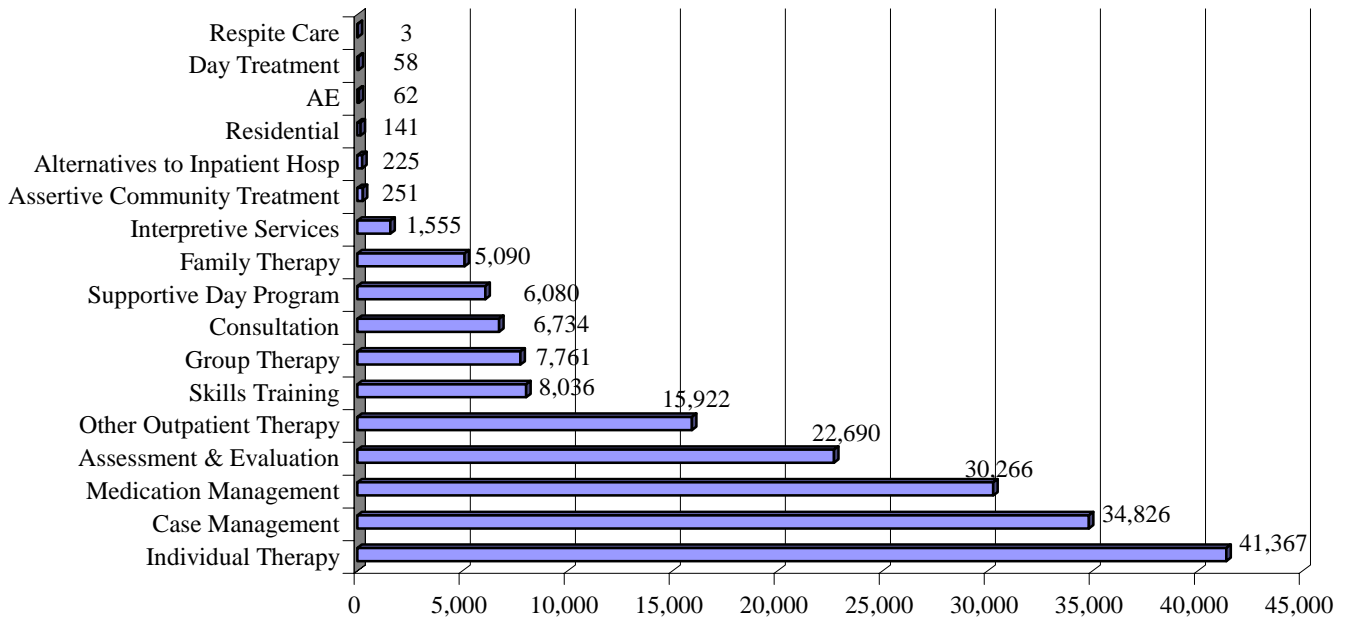


TABLE 11: UNIQUE ENCOUNTERS² BY SERVICE CATEGORIES (ABHA)

MHO Contractors	Service Categories	2004		2005	
		4 th Qtr	1 st Qtr	1 st Qtr	2 nd Qtr
ABHA	AE	0	0	0	0
	Alternatives to Inpatient Hosp	0	1	0	0
	Assertive Community Treatment	6	7	14	14
	Assessment & Evaluation	615	530	528	528
	Case Management	631	544	621	621
	Consultation	194	250	224	224
	Day Treatment	0	0	0	0
	Family Therapy	132	164	142	142
	Group Therapy	187	215	210	210
	Individual Therapy	1,157	983	923	923
	Interpretive Services	1	0	1	1
	Medication Management	601	501	445	445
	Outpatient Therapy	305	321	293	293
	Residential	0	0	0	0
	Respite Care	0	0	0	0
	Skills Training	77	67	53	53
Supportive Day Program	101	86	93	93	

¹ Unique: All duplicate records are removed.

² Encounters: A contact or admission for covered services to OHP Member

**TABLE 11: UNIQUE¹ ENCOUNTERS² BY SERVICE CATEGORIES
(CLACKAMAS & FAMILYCARE) (Continued)**

MHO Contractors	Service Categories	2004	2005	
		4 th Qtr	1 st Qtr	2 nd Qtr
Clackamas	AE	0	0	0
	Alternatives to Inpatient Hosp	3	5	3
	Assertive Community Treatment	0	0	0
	Assessment & Evaluation	522	541	487
	Case Management	875	977	1,009
	Consultation	226	217	215
	Day Treatment	0	0	0
	Family Therapy	36	55	49
	Group Therapy	128	101	106
	Individual Therapy	681	758	713
	Interpretive Services	5	6	2
	Medication Management	528	572	549
	Outpatient Therapy	322	308	318
	Residential	4	5	4
	Respite Care	0	0	0
	Skills Training	108	109	126
	Supportive Day Program	95	76	65
FamilyCare	AE	0	1	0
	Alternatives to Inpatient Hosp	1	2	0
	Assertive Community Treatment	0	0	0
	Assessment & Evaluation	183	217	193
	Case Management	296	280	215
	Consultation	33	54	39
	Day Treatment	0	3	0
	Family Therapy	34	41	35
	Group Therapy	80	72	54
	Individual Therapy	314	345	340
	Interpretive Services	21	17	12
	Medication Management	239	213	165
	Outpatient Therapy	119	109	116
	Residential	0	0	0
	Respite Care	0	0	0
	Skills Training	57	45	54
	Supportive Day Program	64	58	39

¹ Unique Served: All duplicate records are removed.

² Encounters: A contact or admission for covered services to OHP Member.

**TABLE 11: UNIQUE¹ ENCOUNTERS² BY SERVICE CATEGORIES
(GOBHI & JBH) (Continued)**

MHO Contractors	Service Categories	2004	2005	
		4 th Qtr	1 st Qtr	2 nd Qtr
GOBHI	AE	4	0	0
	Alternatives to Inpatient Hosp	0	0	0
	Assertive Community Treatment	13	51	61
	Assessment & Evaluation	660	628	805
	Case Management	1,063	1,054	1,013
	Consultation	129	154	187
	Day Treatment	0	0	0
	Family Therapy	88	121	181
	Group Therapy	222	200	191
	Individual Therapy	855	875	1,126
	Interpretive Services	1	0	5
	Medication Management	892	828	605
	Outpatient Therapy	379	376	475
	Residential	0	0	0
	Respite Care	2	0	1
	Skills Training	250	267	278
	Supportive Day Program	209	202	170
JBH	AE	18	18	21
	Alternatives to Inpatient Hosp	21	25	19
	Assertive Community Treatment	0	1	0
	Assessment & Evaluation	1,528	1,582	997
	Case Management	1,769	1,769	1,200
	Consultation	314	323	271
	Day Treatment	0	0	0
	Family Therapy	272	307	266
	Group Therapy	332	309	249
	Individual Therapy	1,690	1,776	1,397
	Interpretive Services	3	1	0
	Medication Management	1,962	2,068	1,450
	Outpatient Therapy	778	880	680
	Residential	17	15	20
	Respite Care	0	0	0
	Skills Training	275	276	238
	Supportive Day Program	135	135	121

¹ Unique Served: All duplicate records are removed.

² Encounters: A contact or admission for covered services to OHP Member.

**TABLE 11: UNIQUE¹ ENCOUNTERS² BY SERVICE CATEGORIES
(LANECARE & MVBCN) (Continued)**

MHO Contractors	Service Categories	2004	2005	
		4 th Qtr	1 st Qtr	2 nd Qtr
LaneCare	AE	0	0	0
	Alternatives to Inpatient Hosp	20	21	18
	Assertive Community Treatment	27	20	31
	Assessment & Evaluation	1,067	1,147	854
	Case Management	972	1,044	1,108
	Consultation	244	233	173
	Day Treatment	0	0	0
	Family Therapy	149	169	169
	Group Therapy	165	224	177
	Individual Therapy	2,764	2,774	2,747
	Interpretive Services	8	7	0
	Medication Management	622	686	662
	Outpatient Therapy	863	894	893
	Residential	0	0	0
	Respite Care	0	0	0
	Skills Training	120	126	115
	Supportive Day Program	271	269	243
MVBCN	AE	0	0	0
	Alternatives to Inpatient Hosp	0	0	0
	Assertive Community Treatment	15	4	0
	Assessment & Evaluation	1,627	1,709	1,431
	Case Management	2,383	2,471	2,258
	Consultation	632	682	607
	Day Treatment	0	0	0
	Family Therapy	358	383	374
	Group Therapy	363	444	403
	Individual Therapy	3,091	3,281	3,060
	Interpretive Services	5	6	1
	Medication Management	2,455	2,442	2,318
	Outpatient Therapy	1,068	1,147	1,231
	Residential	0	0	0
	Respite Care	0	0	0
	Skills Training	405	410	377
	Supportive Day Program	92	75	66

¹ Unique Served: All duplicate records are removed.

² Encounters: A contact or admission for covered services to OHP Member.

**TABLE 11: UNIQUE¹ ENCOUNTERS² BY SERVICE CATEGORIES
(VERITY & WASHINGTON) (Continued)**

MHO Contractors	Service Categories	2004	2005	
		4 th Qtr	1 st Qtr	2 nd Qtr
Verity	AE	0	0	0
	Alternatives to Inpatient Hosp	33	35	18
	Assertive Community Treatment	0	0	0
	Assessment & Evaluation	1,469	1,383	912
	Case Management	3,440	3,547	3,070
	Consultation	348	412	259
	Day Treatment	20	30	5
	Family Therapy	506	612	382
	Group Therapy	1,027	1,107	880
	Individual Therapy	2,531	2,670	2,277
	Interpretive Services	380	442	324
	Medication Management	2,880	2,832	2,523
	Outpatient Therapy	1,264	1,347	1,091
	Residential	40	36	0
	Respite Care	0	0	0
	Skills Training	1,219	1,225	1,355
Supportive Day Program	1,174	1,112	1,080	
Washington	AE	0	0	0
	Alternatives to Inpatient Hosp	0	0	0
	Assertive Community Treatment	1	0	0
	Assessment & Evaluation	400	366	309
	Case Management	397	421	399
	Consultation	95	104	115
	Day Treatment	0	0	0
	Family Therapy	14	17	34
	Group Therapy	98	108	109
	Individual Therapy	723	768	748
	Interpretive Services	107	111	89
	Medication Management	417	429	382
	Outpatient Therapy	110	117	118
	Residential	0	0	0
	Respite Care	0	0	0
	Skills Training	118	136	150
Supportive Day Program	12	21	16	

¹ Unique Served: All duplicate records are removed.

² Encounters: A contact or admission for covered services to OHP Member.

**TABLE 11: UNIQUE¹ ENCOUNTERS² BY SERVICE CATEGORIES
(TOTAL SERVED & FEE-FOR-SERVICE³) (Continued)**

MHO Contractors	Service Categories	2004	2005	
		4 th Qtr	1 st Qtr	2 nd Qtr
Total Served	AE	22	19	21
	Alternatives to Inpatient Hosp	78	89	58
	Assertive Community Treatment	62	83	106
	Assessment & Evaluation	8,071	8,103	6,516
	Case Management	11,826	12,107	10,893
	Consultation	2,215	2,429	2,090
	Day Treatment	20	33	5
	Family Therapy	1,589	1,869	1,632
	Group Therapy	2,602	2,780	2,379
	Individual Therapy	13,806	14,230	13,331
	Interpretive Services	531	590	434
	Medication Management	10,596	10,571	9,099
	Outpatient Therapy	5,208	5,499	5,215
	Residential	61	56	24
	Respite Care	2	0	1
	Skills Training	2,629	2,661	2,746
	Supportive Day Program	2,153	2,034	1,893
FFS	AE	0	0	0
	Alternatives to Inpatient Hosp	3	2	0
	Assertive Community Treatment	1	0	1
	Assessment & Evaluation	119	104	64
	Case Management	160	162	44
	Consultation	119	131	87
	Day Treatment	340	345	370
	Family Therapy	26	36	8
	Group Therapy	128	128	108
	Individual Therapy	344	390	237
	Interpretive Services	0	1	2
	Medication Management	429	496	357
	Other Outpatient Therapy	90	72	26
	Residential	0	0	0
	Respite Care	0	0	0
	Skills Training	320	346	330
	Supportive Day Program	235	240	217

¹ Unique Served: All duplicate records are removed.

² Encounters: A contact or admission for covered services to OHP Member.

³ Fee-For-Service (FFS): Eligible for OHP and NOT enrolled with an MHO (Open Card)

FIGURE 8: TOTAL ALL QUARTERS: UNIQUE¹ ENCOUNTERS² BY DIAGNOSTIC GROUPS

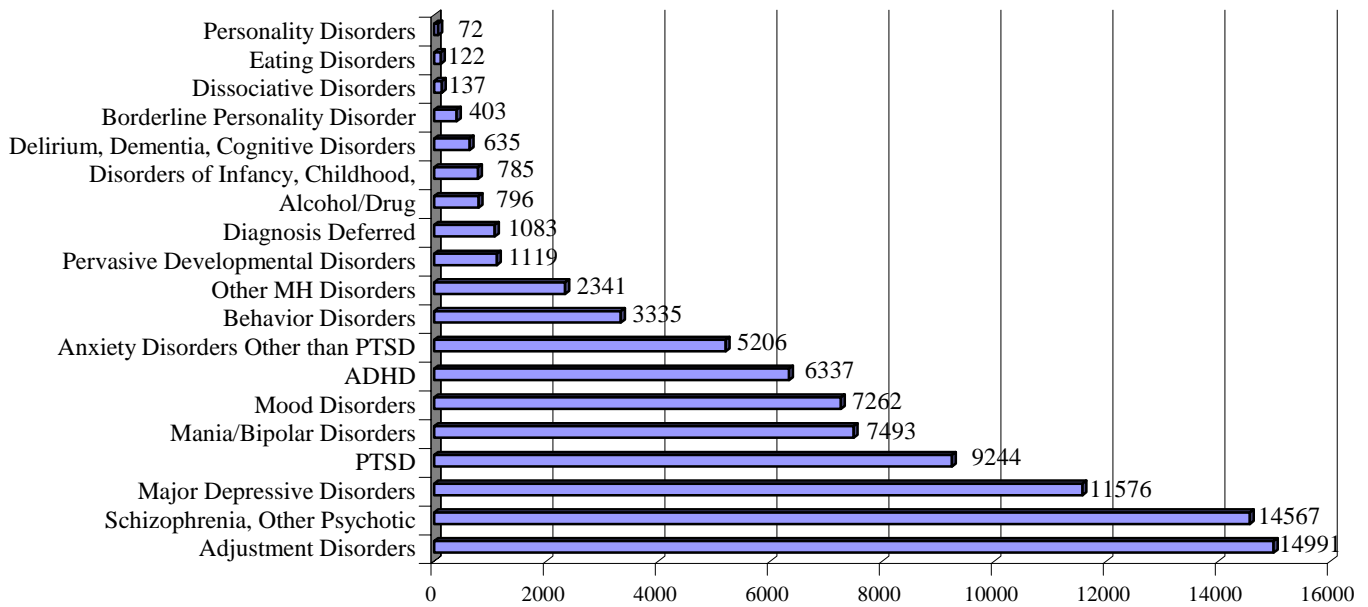


TABLE 12: UNIQUE ENCOUNTERS BY DIAGNOSTIC GROUPS (ABHA)

MHO Contractors	Diagnostic Group	2005		
		4 th Qtr	1 st Qtr	2 nd Qtr
ABHA	ADHD	159	145	134
	Adjustment Disorders	365	373	394
	Alcohol/Drug	12	4	5
	Anxiety Disorders Other than PTSD	186	116	131
	Behavior Disorders	47	42	33
	Borderline Personality Disorder	7	6	9
	Delirium, Dementia, Cognitive Disorders	19	12	15
	Diagnosis Deferred	139	93	63
	Disorders of Infancy, Childhood, Adolescence NES	8	7	8
	Dissociative Disorders	6	4	4
	Eating Disorders	4	6	3
	Major Depressive Disorders	251	201	176
	Mania/Bipolar Disorders	193	117	106
	Mood Disorders	181	154	152
	Other MH Disorders	13	6	7
	Personality Disorders	11	1	1
	Pervasive Developmental Disorders	13	14	10
	PTSD	244	196	206
Schizophrenia, Other Psychotic Disorders	237	162	155	

¹ Unique Served: All duplicate records are removed.

² Encounters: A contact or admission for covered services to OHP Member.

**TABLE 12: UNIQUE¹ ENCOUNTERS² BY DIAGNOSTIC GROUPS
(CLACKAMAS & FAMILYCARE) (Continued)**

MHO Contractors	Diagnostic Group	2004	2005	
		4 th Qtr	1 st Qtr	2 nd Qtr
Clackamas	ADHD	145	165	164
	Adjustment Disorders	308	343	343
	Alcohol/Drug	62	67	62
	Anxiety Disorders Other than PTSD	99	125	126
	Behavior Disorders	82	71	70
	Borderline Personality Disorder	13	9	7
	Delirium, Dementia, Cognitive Disorders	15	15	19
	Diagnosis Deferred	6	8	11
	Disorders of Infancy, Childhood, Adolescence NES	11	7	11
	Dissociative Disorders	0	0	1
	Eating Disorders	5	4	4
	Major Depressive Disorders	185	199	199
	Mania/Bipolar Disorders	132	124	120
	Mood Disorders	171	179	189
	Other MH Disorders	26	40	31
	Personality Disorders	0	0	1
	Pervasive Developmental Disorders	24	25	23
	PTSD	117	137	127
	Schizophrenia, Other Psychotic Disorders	351	340	355
FamilyCare	ADHD	53	69	62
	Adjustment Disorders	102	89	112
	Alcohol/Drug	29	43	37
	Anxiety Disorders Other than PTSD	61	59	59
	Behavior Disorders	40	41	30
	Borderline Personality Disorder	2	1	0
	Delirium, Dementia, Cognitive Disorders	0	1	1
	Diagnosis Deferred	2	3	4
	Disorders of Infancy, Childhood, Adolescence NES	10	9	2
	Dissociative Disorders	0	0	1
	Eating Disorders	2	3	2
	Major Depressive Disorders	121	134	125
	Mania/Bipolar Disorders	70	66	67
	Mood Disorders	68	74	73
	Other MH Disorders	4	11	15
	Personality Disorders	0	0	1
	Pervasive Developmental Disorders	4	4	5
	PTSD	73	80	71
	Schizophrenia, Other Psychotic Disorders	99	91	64

¹ Unique Served: All duplicate records are removed.

² Encounters: A contact or admission for covered services to OHP Member.

**TABLE 12: UNIQUE¹ ENCOUNTERS² BY DIAGNOSTIC GROUPS
(GOBHI & JBH) (Continued)**

MHO Contractors	Diagnostic Group	2004	2005	
		4 th Qtr	1 st Qtr	2 nd Qtr
GOBHI	ADHD	250	265	254
	Adjustment Disorders	281	317	320
	Alcohol/Drug	39	41	34
	Anxiety Disorders Other than PTSD	153	150	154
	Behavior Disorders	106	105	106
	Borderline Personality Disorder	9	4	9
	Delirium, Dementia, Cognitive Disorders	15	19	16
	Diagnosis Deferred	134	137	242
	Disorders of Infancy, Childhood, Adolescence NES	43	37	35
	Dissociative Disorders	3	4	3
	Eating Disorders	2	2	1
	Major Depressive Disorders	235	204	248
	Mania/Bipolar Disorders	224	215	212
	Mood Disorders	258	261	270
	Other MH Disorders	125	122	123
	Personality Disorders	10	3	2
	Pervasive Developmental Disorders	26	23	18
	PTSD	217	215	252
	Schizophrenia, Other Psychotic Disorders	352	350	347
JBH	ADHD	268	293	238
	Adjustment Disorders	710	766	615
	Alcohol/Drug	27	34	33
	Anxiety Disorders Other than PTSD	279	300	224
	Behavior Disorders	170	209	189
	Borderline Personality Disorder	31	36	23
	Delirium, Dementia, Cognitive Disorders	28	34	26
	Diagnosis Deferred	28	28	25
	Disorders of Infancy, Childhood, Adolescence NES	22	29	25
	Dissociative Disorders	8	7	6
	Eating Disorders	10	8	3
	Major Depressive Disorders	481	497	386
	Mania/Bipolar Disorders	535	543	476
	Mood Disorders	468	442	391
	Other MH Disorders	233	238	81
	Personality Disorders	3	6	3
	Pervasive Developmental Disorders	61	55	44
	PTSD	415	423	318
	Schizophrenia, Other Psychotic Disorders	885	871	657

¹ Unique Served: All duplicate records are removed.

² Encounters: A contact or admission for covered services to OHP Member.

**TABLE 12: UNIQUE¹ ENCOUNTERS² BY DIAGNOSTIC GROUPS
(LANECARE & MVBCN) (Continued)**

MHO Contractors	Diagnostic Group	2004	2005	
		4 th Qtr	1 st Qtr	2 nd Qtr
LaneCare	ADHD	220	251	252
	Adjustment Disorders	782	835	816
	Alcohol/Drug	6	6	3
	Anxiety Disorders Other than PTSD	247	244	284
	Behavior Disorders	203	201	184
	Borderline Personality Disorder	4	2	3
	Delirium, Dementia, Cognitive Disorders	2	5	4
	Diagnosis Deferred	0	0	0
	Disorders of Infancy, Childhood, Adolescence NES	31	37	44
	Dissociative Disorders	7	7	7
	Eating Disorders	2	2	2
	Major Depressive Disorders	464	499	494
	Mania/Bipolar Disorders	304	296	311
	Mood Disorders	309	331	317
	Other MH Disorders	271	277	5
	Personality Disorders	1	1	0
	Pervasive Developmental Disorders	46	50	49
	PTSD	545	575	530
	Schizophrenia, Other Psychotic Disorders	525	518	522
MVBCN	ADHD	403	414	437
	Adjustment Disorders	1,206	1,333	1,314
	Alcohol/Drug	13	11	4
	Anxiety Disorders Other than PTSD	315	292	287
	Behavior Disorders	209	206	198
	Borderline Personality Disorder	44	53	48
	Delirium, Dementia, Cognitive Disorders	87	76	81
	Diagnosis Deferred	0	0	0
	Disorders of Infancy, Childhood, Adolescence NES	46	47	44
	Dissociative Disorders	18	17	15
	Eating Disorders	13	10	10
	Major Depressive Disorders	900	903	851
	Mania/Bipolar Disorders	456	479	457
	Mood Disorders	402	396	357
	Other MH Disorders	119	151	145
	Personality Disorders	1	1	0
	Pervasive Developmental Disorders	106	120	106
	PTSD	593	650	644
	Schizophrenia, Other Psychotic Disorders	929	907	842

¹ Unique Served: All duplicate records are removed.² Encounters: A contact or admission for covered services to OHP Member.

**TABLE 12: UNIQUE¹ ENCOUNTERS² BY DIAGNOSTIC GROUPS
(VERITY & WASHINGTON) (Continued)**

MHO Contractors	Diagnostic Group	2004	2005	
		4 th Qtr	1 st Qtr	2 nd Qtr
Verity	ADHD	494	510	440
	Adjustment Disorders	927	1,049	846
	Alcohol/Drug	82	77	65
	Anxiety Disorders Other than PTSD	344	376	336
	Behavior Disorders	224	255	227
	Borderline Personality Disorder	11	11	10
	Delirium, Dementia, Cognitive Disorders	48	39	33
	Diagnosis Deferred	48	64	48
	Disorders of Infancy, Childhood, Adolescence NES	82	92	67
	Dissociative Disorders	9	6	4
	Eating Disorders	9	8	4
	Major Depressive Disorders	1,084	1,085	980
	Mania/Bipolar Disorders	546	519	498
	Mood Disorders	558	566	482
	Other MH Disorders	111	97	84
	Personality Disorders	8	8	9
	Pervasive Developmental Disorders	88	90	76
	PTSD	727	758	700
	Schizophrenia, Other Psychotic Disorders	1,424	1,406	1,355
Washington	ADHD	104	81	67
	Adjustment Disorders	130	161	154
	Alcohol/Drug	0	0	0
	Anxiety Disorders Other than PTSD	81	93	85
	Behavior Disorders	44	43	0
	Borderline Personality Disorder	1	0	50
	Delirium, Dementia, Cognitive Disorders	9	8	8
	Diagnosis Deferred	0	0	0
	Disorders of Infancy, Childhood, Adolescence NES	12	9	10
	Dissociative Disorders	0		0
	Eating Disorders	0	2	1
	Major Depressive Disorders	244	224	206
	Mania/Bipolar Disorders	140	144	143
	Mood Disorders	74	69	70
	Other MH Disorders	3	2	1
	Personality Disorders	0	1	0
	Pervasive Developmental Disorders	12	14	13
	PTSD	149	148	134
	Schizophrenia, Other Psychotic Disorders	274	278	271

¹ Unique Served: All duplicate records are removed.

² Encounters: A contact or admission for covered services to OHP Member.

**TABLE 12: UNIQUE¹ ENCOUNTERS² BY DIAGNOSTIC GROUPS
(TOTAL ENCOUNTERS & FFS³) (Continued)**

MHO Contractors	Diagnostic Group	2004	2005	
		4 th Qtr	1 st Qtr	2 nd Qtr
Total Encounters	ADHD	2,096	2,193	2,048
	Adjustment Disorders	4,811	5,266	4,914
	Alcohol/Drug	270	283	243
	Anxiety Disorders Other than PTSD	1,765	1,755	1,686
	Behavior Disorders	1,125	1,173	1,037
	Borderline Personality Disorder	122	122	159
	Delirium, Dementia, Cognitive Disorders	223	209	203
	Diagnosis Deferred	357	333	393
	Disorders of Infancy, Childhood, Adolescence NES	265	274	246
	Dissociative Disorders	51	45	41
	Eating Disorders	47	45	30
	Major Depressive Disorders	3,965	3,946	3,665
	Mania/Bipolar Disorders	2,600	2,503	2,390
	Mood Disorders	2,489	2,472	2,301
	Other MH Disorders	905	944	492
	Personality Disorders	34	21	17
	Pervasive Developmental Disorders	380	395	344
	PTSD	3,080	3,182	2,982
	Schizophrenia, Other Psychotic Disorders	5,076	4,923	4,568
FFS	ADHD	119	124	117
	Adjustment Disorders	104	106	45
	Alcohol/Drug	15	18	5
	Anxiety Disorders Other than PTSD	40	36	26
	Behavior Disorders	96	93	71
	Borderline Personality Disorder	0	1	2
	Delirium, Dementia, Cognitive Disorders	7	13	8
	Diagnosis Deferred	0	0	0
	Disorders of Infancy, Childhood, Adolescence NES	29	27	23
	Dissociative Disorders	1	1	0
	Eating Disorders	0	0	1
	Major Depressive Disorders	80	86	39
	Mania/Bipolar Disorders	102	102	87
	Mood Disorders	11	67	39
	Other MH Disorders	8	7	3
	Personality Disorders	49	0	0
	Pervasive Developmental Disorders	17	16	11
	PTSD	124	132	98
	Schizophrenia, Other Psychotic Disorders	409	443	380

¹ Unique Served: All duplicate records are removed.

² Encounters: A contact or admission for covered services to OHP Member.

³ Fee-For-Service (FFS): Eligible for OHP and NOT enrolled with an MHO (Open Card)

Hospital Data

TABLE 13: UNIQUE¹ HOSPITAL ADMISSIONS PER 1,000 MEMBERS²

MHO Contractors	2004	2005	
	4 th Qtr	1 st Qtr	2 nd Qtr
ABHA*	1.53	0.81	0.00
Clackamas	1.74	2.03	1.56
FamilyCare	1.73	2.18	0.08
GOBHI**	0.35	0.16	0.00
JBH	2.58	2.20	2.37
LaneCare	2.32	2.69	2.24
MVBCN	0.74	0.92	0.71
Verity	2.75	3.17	2.95
Washington	2.49	2.75	2.27
Quarterly Totals	1.89	1.96	1.65

TABLE 14: UNIQUE HOSPITAL ADMISSIONS BY AGE GROUPS PER 1,000 MEMBERS

MHO Contractors	Age Group	2004	2005	
		4 th Qtr	1 st Qtr	2 nd Qtr
ABHA*	0-17	0.47	0.47	0.00
	18-64	3.07	1.42	0.00
	65+	0.59	0.00	0.00
Clackamas	0-17	0.47	0.53	0.53
	18-64	3.79	4.86	3.41
	65+	1.04	0.00	1.03
FamilyCare	0-17	0.44	0.74	0.15
	18-64	3.22	4.14	0.00
	65+	0.00	0.00	0.00
GOBHI**	0-17	0.06	0.06	0.00
	18-64	0.82	0.35	0.00
	65+	0.00	0.00	0.00
JBH	0-17	0.92	0.92	1.00
	18-64	4.71	4.12	4.51
	65+	1.35	0.22	0.00
LaneCare	0-17	0.22	0.22	0.26
	18-64	4.63	5.71	4.85
	65+	2.70	1.61	0.54

¹ Unique: All duplicated records are removed.² Per 1,000 members is the number enrolled divided by 1,000

Data Source: DSSURS – Data Pulled: 9/12/05

*ABHA inpatient numbers for the 2nd Qtr of 2005 were submitted after data pull for this report.**GOBHI inpatient numbers for the 2nd Qtr of 2005 were submitted after data pull for this report.

TABLE 14: UNIQUE¹ HOSPITAL ADMISSIONS BY AGE GROUPS PER 1,000 MEMBERS²

MHO Contractors	Age Group	2004	2005	
		4 th Qtr	1 st Qtr	2 nd Qtr
MVBCN	0-17	0.14	0.09	0.16
	18-64	1.76	2.19	1.58
	65+	0.24	1.67	1.19
Verity	0-17	0.68	0.97	0.87
	18-64	5.56	6.43	6.24
	65+	1.15	1.15	0.65
Washington	0-17	0.90	1.12	0.79
	18-64	5.70	6.22	5.49
	65+	0.88	1.73	1.69
Total	0-17	0.50	0.58	0.50
	18-64	3.90	4.14	3.55
	65+	0.96	0.88	0.64

TABLE 15: TOTAL UNIQUE HOSPITAL DAYS PER 1,000 MEMBERS

MHO Contractors	2004	2005	
	4 th Qtr	1 st Qtr	2 nd Qtr
ABHA*	10.0	9.4	0.0
Clackamas	13.1	18.6	11.8
FamilyCare	11.6	14.0	0.3
GOBHI**	2.6	1.0	0.0
JBH	17.3	18.9	16.4
LaneCare	19.0	30.2	20.3
MVBCN	8.3	10.1	7.5
Verity	18.2	36.1	34.4
Washington	16.2	22.7	20.9
Total	13.6	19.7	15.6

¹ Unique: All duplicated records are removed

² Per 1,000 members is the number enrolled divided by 1,000

TABLE 16: TOTAL UNIQUE¹ HOSPITAL DAYS BY AGE GROUP PER 1,000 MEMBERS²

MHO Contractors	Age Groups	2004	2005	
		4 th Qtr	1 st Qtr	2 nd Qtr
ABHA*	0-17	1.9	4.3	0.0
	18-64	21.0	18.1	0.0
	65+	8.2	0.0	0.0
Clackamas	0-17	4.2	4.2	4.5
	18-64	27.4	45.7	22.7
	65+	9.3	0.0	17.4
FamilyCare	0-17	7.2	7.6	0.6
	18-64	16.9	23.1	0.0
	65+	0.0	0.0	0.0
GOBHI**	0-17	0.9	0.5	0.0
	18-64	5.4	1.9	0.0
	65+	0.0	0.0	0.0
JBH	0-17	7.4	8.5	9.6
	18-64	28.6	34.3	27.8
	65+	19.3	4.9	0.0
LaneCare	0-17	0.8	2.0	3.4
	18-64	36.3	60.5	42.3
	65+	45.3	52.5	9.7
MVBCN	0-17	1.5	1.2	1.7
	18-64	20.2	22.9	16.4
	65+	1.0	22.7	14.5
Verity	0-17	5.3	7.0	7.0
	18-64	34.5	76.0	76.2
	65+	14.7	24.2	11.6
Washington	0-17	8.6	11.2	7.2
	18-64	32.0	44.3	49.6
	65+	6.6	27.6	21.1
Totals	0-17	4.2	5.1	4.6
	18-64	26.5	41.0	33.3
	65+	12.4	17.0	9.3

¹ Unique: All duplicated records are removed² Per 1,000 members is the number enrolled divided by 1,000

Data Source: DSSURS – Data Pulled: 9/12/05

*ABHA inpatient numbers for the 2nd Qtr of 2005 were submitted after data pull for this report.**GOBHI inpatient numbers for the 2nd Qtr of 2005 were submitted after data pull for this report.

TABLE 17: PERCENT OF HOSPITAL RE-ADMISSION WITHIN 30 DAYS

MHO Contractors	2004	2005	
	4 th Qtr	1 st Qtr	2 nd Qtr
ABHA*	11.6%	13.6%	0.0%
Clackamas	4.3%	15.1%	14.6%
FamilyCare	0.0%	7.4%	0.0%
GOBHI**	0.0%	20.0%	0.0%
JBH	10.7%	15.0%	7.6%
LaneCare	8.1%	19.6%	18.5%
MVBCN	11.1%	6.1%	2.0%
Verity	8.1%	14.5%	17.3%
Washington	9.6%	18.7%	7.8%
Total	8.7%	14.8%	12.4%

TABLE 18: TOTAL HOSPITAL RE-ADMISSION WITHIN 180 DAYS

	2004	2005
	4 th Qtr	1 st Qtr
ABHA*	11.6%	18.2%
Clackamas	6.5%	24.5%
FamilyCare	4.3%	14.8%
GOBHI**	0.0%	40.0%
JBH	13.0%	27.2%
LaneCare	10.5%	29.9%
MVBCN	13.0%	15.2%
Verity	9.0%	24.7%
Washington	10.8%	30.8%
Total	10.4%	25.3%

This table does not include the 2nd Qtr of 2005 in this report due to the 180-day lag in data submission.

Data Source: DSSURS – Data Pulled: 9/12/05

*ABHA inpatient numbers for the 2nd Qtr of 2005 were submitted after data pull for this report.

**GOBHI inpatient numbers for the 2nd Qtr of 2005 were submitted after data pull for this report.

FIGURE 9: ENROLLED MEMBERS SEEN WITHIN 7 DAYS OF DISCHARGE: BY MONTH *(percentage based on total members seen after hospital discharge.)*

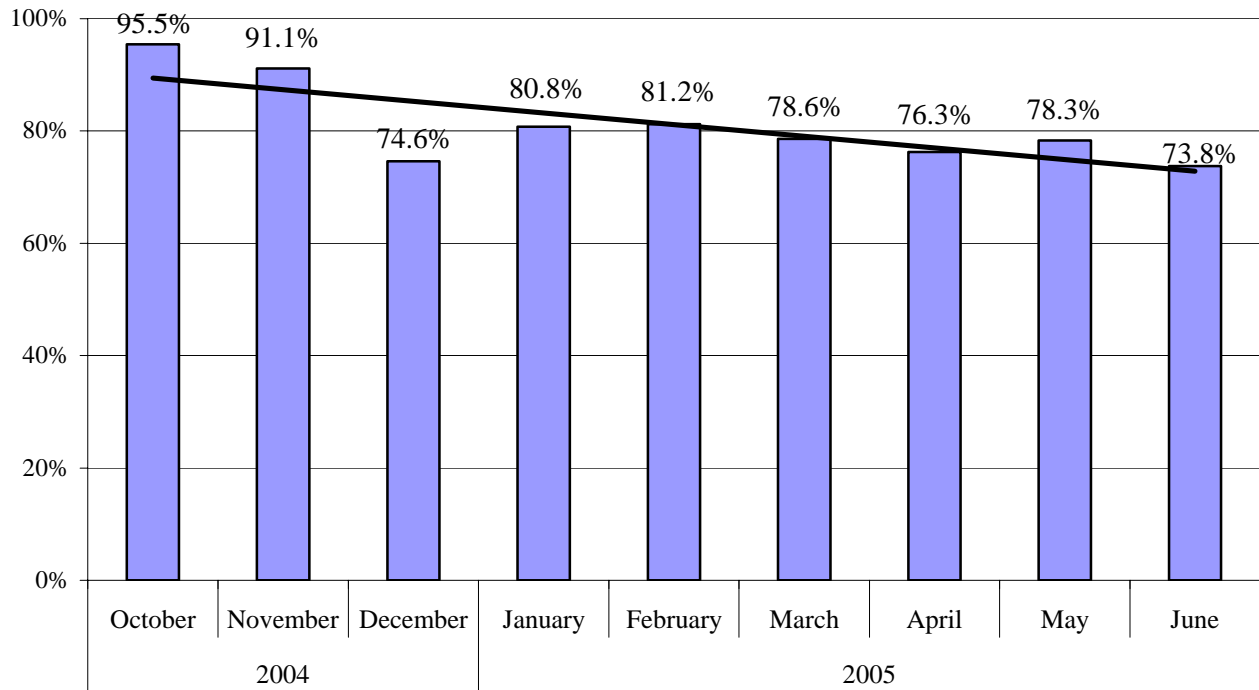


TABLE 19: ENROLLED MEMBERS SEEN WITHIN 7 DAYS OF DISCHARGE: BY MHO

MHO Contractors	2004	2005	
	4 th Qtr	1 st Qtr	2 nd Qtr
ABHA*	85.3%	68.4%	0.0%
Clackamas	71.0%	75.0%	74.3%
FamilyCare	83.3%	62.5%	25.0%
GOBHI**	80.0%	83.3%	0.0%
JBH	90.4%	71.3%	69.5%
LaneCare	84.8%	85.9%	76.7%
MVBCN	84.4%	80.4%	75.0%
Verity	89.1%	87.2%	80.0%
Washington	83.8%	79.1%	81.3%
Total	86.5%	80.2%	76.0%

Data Source: DSSURS – Data Pulled: 9/12/05

*ABHA inpatient numbers for the 2nd Qtr of 2005 were submitted after data pull for this report.

**GOBHI inpatient numbers for the 2nd Qtr of 2005 were submitted after data pull for this report.

MHO UTILIZATION REPORT GLOSSARY

DIAGNOSIS CATEGORY:

Diagnosis categories are defined by the grouping of diagnoses in the most recent version of the American Psychiatric Association's Diagnostic and Statistical Manual (DSM).

ELIGIBLE:

An individual eligible for services under the OHP, but may not be enrolled into an MHO. Includes enrolled and fee-for-service.

ENCOUNTER:

An outpatient contact or Acute Inpatient Hospital Psychiatric Care admission for Covered Services provided to an OHP Member.

ENROLLED (ENROLLEE):

Eligible for the Oregon Health Plan (OHP) and enrolled in an MHO.

FEE-FOR-SERVICE (FFS):

Individuals who are eligible for the OHP, but are not enrolled with an MHO. This is also known as fee-for-service (FFS) or an "open card".

MENTAL HEALTH ORGANIZATION (MHO):

A Prepaid Health Plan under contract with DHS to provide Covered Services under the OHP Medicaid Demonstration Project and State Children's Health Insurance Program (SCHIP). MHOs can be FCHPs, CMHPs, or private MHOs or combinations thereof.

OFFICE OF MENTAL HEALTH AND ADDICTION SERVICES (OMHAS):

The program office of DHS responsible for the administration of mental health services for the State of Oregon.

OREGON HEALTH PLAN (OHP):

Oregon's health care reform effort consisting of a Medicaid Demonstration Project, State Children's Health Insurance Program, an individual insurance program for persons excluded from health insurance coverage due to pre-existing health conditions, and a group insurance program for small businesses. One objective of this reform effort includes universal coverage for Oregonians. In the context of this report, OHP refers to all individuals on FFS.

MHO UTILIZATION REPORT GLOSSARY *(Continued)*

PENETRATION RATE:

Percent of enrollees served during a given time period. (See also: Percent Enrollees Served).

PERCENT ENROLLEES SERVED:

This is a general measure of access, but more related to utilization of services. It is a percentage calculated by summing the unique enrollees seen during a given time period and dividing that number by the total enrollees for that time period. For example, if there is 10,000 enrollees statewide in a given month and during that same month 500 of those enrollees receive services, the percent of enrollees served is 5%.

SERVICE CATEGORY:

Service category is a descriptive grouping of service codes (BA, ECC, and CPT) that are similar procedurally.

UNIQUE SERVED:

Unduplicated number of individuals receiving mental health services.

UNIQUE ENCOUNTERS:

Unduplicated services received by an individual(s) within a specific time period. One individual may have had several services provided – each service would be part of the calculations.

DIAGNOSTIC CATEGORIES GLOSSARY WITH SPECIFIC DSMIV CODES

ADHD:

314.0; 314.00; 314.01; 314.1; 314.9

ADJUSTMENT DISORDERS:

308.3; 308.9; 309.00; 309.1; 309.2; 309.21; 309.23; 309.24; 309.28; 309.29; 309.3;
309.4; 309.82; 309.83; 309.89; 309.9

ALCOHOL/DRUG:

290.50; 291.0; 291.3; 291.5; 291.81; 291.89; 292.0; 292.11; 292.12; 292.81; 292.84;
292.9; 303.00; 303.03; 303.90; 303.91; 304.00; 304.01; 304.10; 304.20; 304.23; 304.30;
304.40; 304.41; 304.43; 304.60; 304.80; 304.83; 304.90; 304.92; 305.00; 305.03; 305.1;
305.20; 305.21; 305.30; 305.50; 305.60; 305.7; 305.70; 305.72; 305.73; 305.90; 995.2

ANXIETY DISORDER OTHER THAN PTSD:

293.84; 300.00; 300.01; 300.02; 300.09; 300.10; 300.20; 300.21; 300.22; 300.23;
300.29; 300.3; 313.0

BEHAVIOR DISORDERS:

312.00; 312.01; 312.02; 312.30; 312.31; 312.32; 312.34; 312.39; 312.4; 312.8; 312.81;
312.82; 312.89; 312.9; 313.81

BORDERLINE PERSONALITY DISORDERS:

301.83

DELIRIUM, DEMENTIA, COGNITIVE DISORDERS:

290.0; 290.10; 290.11; 290.12; 290.13; 290.20; 290.21; 290.3; 290.40; 290.42; 290.43;
291.2; 291.20; 292.89; 293.0; 294.0; 294.1; 294.10; 294.11; 294.8; 294.9; 294.90;
310.1; 310.10; 310.9; 331.0

DIAGNOSIS DEFERRED:

799.9

DISORDERS OF INFANCY, CHILDHOOD, ADOLESCENCE NES:

307.0; 307.20; 307.23; 307.3; 307.6; 307.7; 313.23; 313.82; 313.89; 313.9; 315.4;
315.9; 787.6

DIAGNOSTIC CATEGORIES GLOSSARY
WITH SPECIFIC DSM-IV CODES
(Continued)

DISSOCIATIVE DISORDERS:

300.12; 300.13; 300.14; 300.15; 300.6

EATING DISORDERS:

307.1; 307.50; 307.51; 307.52; 307.53; 307.59

LEARNING DISORDERS:

315.00; 315.1; 315.31; 315.32; 315.39

MAJOR DEPRESSIVE DISORDERS:

296.2; 296.20; 296.21; 296.22; 296.23; 296.24; 296.25; 296.26; 296.3; 296.30; 296.31;
296.32; 296.33; 296.34; 296.35; 296.36

MANIA/BIPOLAR DISORDERS:

296; 296.0; 296.00; 296.01; 296.02; 296.03; 296.04; 296.05; 296.06; 296.09; 296.10;
296.12; 296.13; 296.15; 296.4; 296.40; 296.41; 296.42; 296.43; 296.44; 296.45; 296.46;
296.50; 296.51; 296.52; 296.53; 296.54; 296.55; 296.56; 296.6; 296.60; 296.61; 296.62;
296.63; 296.64; 296.65; 296.66; 296.7; 296.70; 296.8; 296.80; 296.81; 296.89; 296.9

MOOD DISORDERS WITHOUT BEHAVIOR, MANIA AND BIPOLAR:

293.83; 296.09; 296.82; 296.90; 296.99; 300.4; 300.40; 301.13; 309.1; 311; 311.0;
311.00

OTHER MENTAL HEALTH (MH) DISORDERS:

293.89; 293.9; 300.11; 300.16; 300.7; 300.81; 300.82; 300.9; 302.1; 302.2; 302.4;
302.73; 302.9; 306.3; 307.42; 307.44; 307.45; 307.46; 307.80; 307.89; 307.9; 308.0;
308.1; 316; 317; 318.0; 318.1; 319; 995.2; 995.50; 995.52; 995.53; 995.54; 995.59;
995.81; V611.0; V612.0; V612.1; V618; V619; V628.1; V628.2; V628.9; V629;
V710.2; V710.9; V719

PERSONALITY DISORDERS:

301.0; 301.1; 301.20; 301.22; 301.3; 301.4; 301.50; 301.6; 301.7; 301.81; 301.82; 301.9

DIAGNOSTIC CATEGORIES GLOSSARY
WITH SPECIFIC DSMIV CODES
(Continued)

PERVASIVE DEVELOPMENTAL DISORDERS:

299.0; 299.00; 299.01; 299.10; 299.11; 299.80; 299.81; 299.90

POST-TRAUMATIC STRESS DISORDER (PTSD):

309.81

SCHIZOPHRENIA, OTHER PSYCHOTIC DISORDERS:

293.81; 293.82; 295.0; 295.00; 295.01; 295.02; 295.03; 295.10; 295.11; 295.12; 295.14;
295.15; 295.20; 295.22; 295.23; 295.24; 295.3; 295.30; 295.31; 295.32; 295.33; 295.34;
295.35; 295.40; 295.42; 295.43; 295.44; 295.45; 295.50; 295.51; 295.52; 295.54;
295.55; 295.60; 295.61; 295.62; 295.64; 295.65; 295.7; 295.70; 295.71; 295.72; 295.73;
295.74; 295.75; 295.70; 295.83; 295.9; 294.90; 295.91; 295.92; 295.93; 295.94; 295.95;
297.0; 297.1; 297.3; 297.9; 298.8; 298.9

SERVICE CATEGORIES GLOSSARY WITH SPECIFIC PROCEDURES CODES

AE:

H0018

ALTERNATIVES TO INPATIENT HOSPITALIZATION:

H0035; H2013

ASSERTIVE COMMUNITY TREATMENT:

H0039

ASSESSMENT & EVALUATION:90801; 90802; 90885; 96100; 99090; 99214; 99222; 99223; 99231; 99232; 99233;
99238; 99239; BA008; BA009; BA010; H0002; H0031**CASE MANAGEMENT:**

99371; BA046; BA047; BA147; T1016

CONSULTATION:

90882; 90887; 99255; BA017

CRISIS INTERVENTION:

S9484

DAY TREATMENT:

ECC13; H0037; H2012

FAMILY THERAPY:

90846; 90849; BA013; BA016

GROUP THERAPY:

90853; 90857; BA015; BA115

INDIVIDUAL THERAPY:90804; 90805; 90806; 90807; 90808; 90809; 90810; 90811; 90812; 90813; 90814;
90815; BA011; BA111; H0004**INTERPRETIVE SERVICES:**

T1013

**SERVICE CATEGORIES GLOSSARY WITH
SPECIFIC PROCEDURES CODES**
(Continued)

MST:

H2033

MEDICATION MANAGEMENT:

90862; BA019; BA026; BA126; H0034; H2010

OTHER OUTPATIENT THERAPY:

90847; 90899; ECC50; H2021; H2022

RESPIRE CARE:

ECC20; H0045; S5151; S9125; T1005

RESIDENTIAL:

ECC11; H0019

ENROLLMENT NUMBERS PER MONTH

MHO Contractor	Oct-04	Nov-04	Dec-04	Jan-05	Feb-05	Mar-05	Apr-05	May-05	Jun-05
ABHA	24,666	24,651	24,423	24,229	24,153	23,992	24,157	24,257	24,088
Clackamas	23,205	23,086	23,094	23,022	23,125	22,904	22,994	23,062	23,403
FamilyCare	11,157	10,834	10,820	10,473	10,335	10,390	10,534	10,527	10,271
GOBHI	28,126	27,787	27,608	27,393	27,432	27,517	27,913	28,199	28,357
JBH	61,104	60,592	60,453	59,552	59,561	59,182	59,926	60,165	60,237
LaneCare	33,213	32,940	32,802	32,452	32,363	32,185	32,557	32,852	32,807
MVBCN	64,887	64,039	64,442	63,786	63,807	63,807	63,963	64,819	64,998
Verity	68,705	68,143	67,953	66,989	66,850	66,699	67,270	68,056	67,392
Washington	25,071	29,182	29,164	28,995	29,013	29,479	29,689	30,163	29,776
Monthly Totals	340,134	341,254	340,759	336,891	336,639	336,155	339,003	342,100	341,329

% Monthly Increase/Decrease	0.33%	-0.15%	-1.15%	-0.07%	-0.14%	0.84%	0.91%	-0.23%	-1.18%
	Overall								

Eligibles	432,952	428,610	425,450	423,820	422,708	424,167	424,408	423,863	422,889
FFS	136,140	136,212	135,499	137,731	135,490	139,159	134,032	131,887	128,278

UNIQUE MEMBERS SERVED PER MONTH

MHO Contractors	Oct-04	Nov-04	Dec-04	Jan-05	Feb-05	Mar-05	Apr-05	May-05	Jun-05
ABHA	3,448	3,680	3,546	3,304	3,242	3,255	3,379	3,239	3,256
Clackamas	3,010	3,175	3,113	3,317	3,029	3,741	3,388	3,464	3,098
FamilyCare	1,329	1,284	1,239	1,310	1,114	1,311	1,191	1,202	424
GOBHI	5,571	5,122	4,369	5,218	4,864	5,351	5,612	5,766	5,168
JBH	9,370	8,809	8,601	9,500	8,918	10,322	8,507	6,698	6,140
LaneCare	9,175	9,549	8,981	9,848	9,066	10,272	9,751	9,952	9,268
MVBCN	10,942	11,181	11,437	11,450	10,705	12,720	11,513	10,539	10,237
Verity	18,595	18,800	17,583	18,781	17,275	19,702	17,967	14,669	12,723
Washington	2,797	3,125	2,866	3,063	2,920	3,234	2,401	3,065	2,537
FFS	64,237	64,725	61,735	65,791	61,133	69,908	63,709	58,594	52,851
Total	3,448	3,680	3,546	3,304	3,242	3,255	3,379	3,239	3,256