

USDA's

George Washington Carver Center

5601 Sunnyside Avenue

Beltsville, Maryland 20705

Table of Contents

[Building 1](#)

[OO Physical Security](#)

[Cafeteria](#)

[Credit Union \(ATM\)](#)

[Fitness Center](#)

[Loading Dock](#)

[Mail Room Operations](#)

[Copy Center](#)

[Building 2](#)

[Health Unit](#)

[Child Development Center](#)

[Nursing Mothers Room](#)

[Telework Center](#)

[Buildings 3 & 4](#)

[The Farmers Market](#)

[Shuttle Service](#)

[Carver Day](#)

[Holiday Concerts](#)

[Contact Info](#)



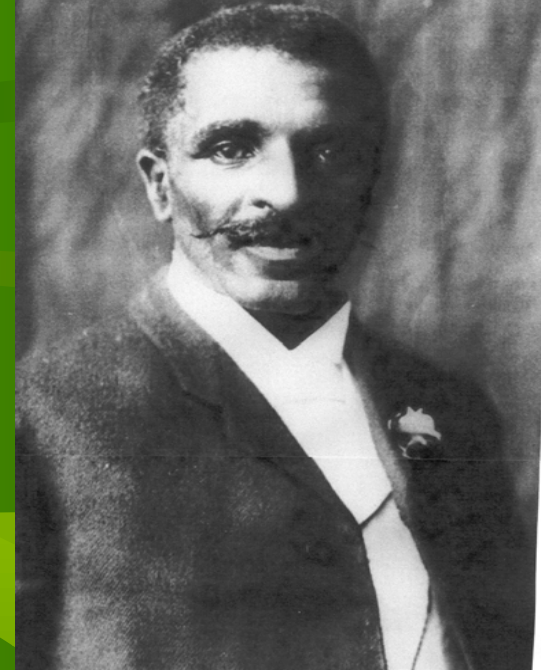
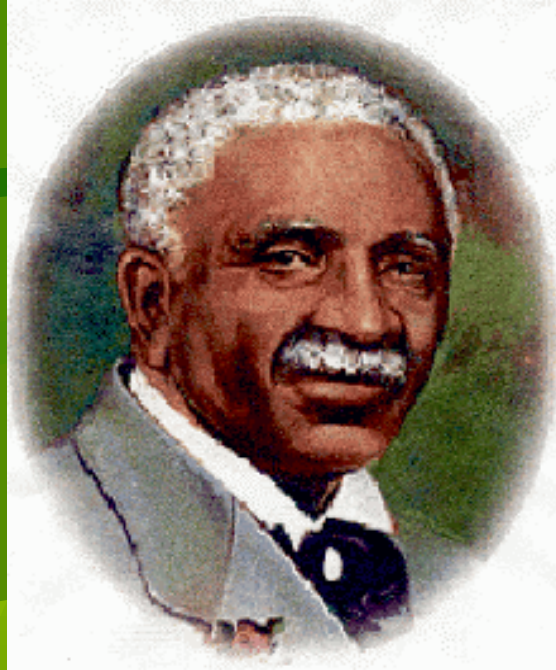
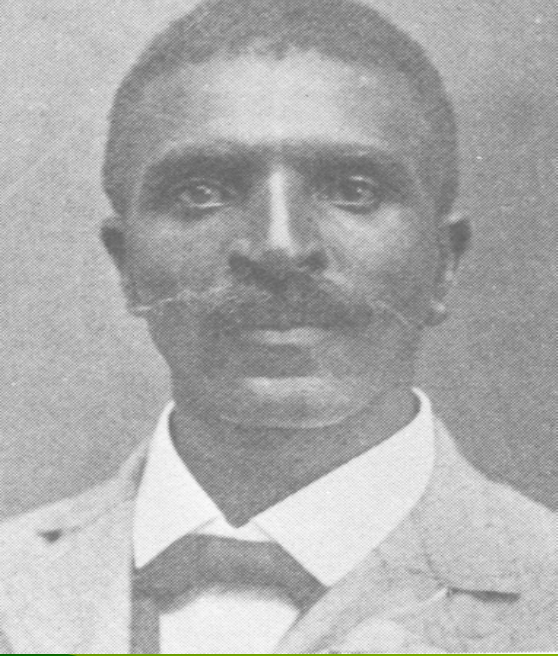


**Welcome to the USDA's
George Washington Carver Center**

A large, arched sign for the George Washington Carver Center. The sign features a brick base with a light-colored, curved top section. The text "George Washington Carver Center" is displayed in white, bold, sans-serif font on the brick portion. Two square pillars, one on each side, also feature a circular emblem. The sign is set on a green lawn with a flower bed in front. In the background, there are lush green trees and a paved area.

George Washington Carver Center

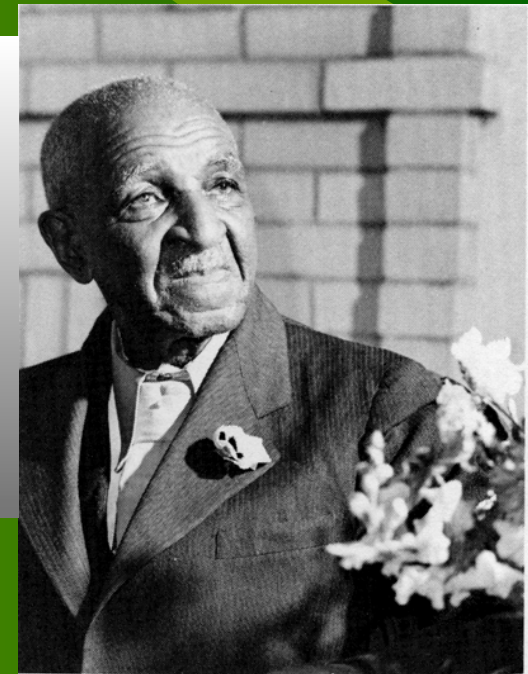
This center is aptly named after the Honorable Dr. George Washington Carver, who's many contributions to the agriculture arena are well noted.



Dr. Carver wore a flower in his lapel every day he went to work.

In August 1935 Dr. Carver became a “collaborator for the US Department of Agriculture.

Serving in this position until the year prior to his death in 1943





**Come and enjoy the 43 acre site and
its beautiful landscaped surroundings**



**By chance the Carver Center
was placed on acreage near
where research was done on Peanut**

**Plants. Utilization of this plant
was one of the many products
for which Dr. Carver is well noted.**

A small, brown rabbit is sitting in a field of green grass. The rabbit is facing left and has its ears perked up. The grass is vibrant green and appears to be a mix of different types of grasses. The lighting is bright, suggesting a sunny day.

Natural surroundings



Wild life is undisturbed



Seasonal Landscape



A Time Capsule was buried when the Carver Center was built to be opened in 2009

An aerial photograph of a residential development. The houses are arranged in a grid-like pattern, with a central building highlighted. The text "Building #1" is overlaid in green with a black outline. The surrounding area includes roads, green spaces, and other buildings.

Building #1



Upon entering the facilities main foyer, you will be greeted with the Seal of Dr. Carver. This seal graces the foyer and greets the Employees and visitors as they enter the center

00

Physical Security



Facility and grounds are well monitored



Physical Security Office
(301) 504-2421 Fax (301) 504-2425



**Employees' and Visitors' must have proper identification.
Visitors' personal bags and packages are screened (301) 504-2366**



All incoming packages are checked and/or screened



In the Main Lobby, you will see a replica of the Jesup Wagon. Dr. Carver utilized this means to visit and educate the farmers in better methods to grow produce.



Dr. Carver was instrumental in the better growth development of his favorite flower the Amaryllis



Spacious Courtyard



Ideal area for lunch or coffee break



Walk ways for strolling / jogging or just to enjoy the day

Cafeteria



**Central Location
(301) 5042427**



The convenience of a local store



**7:00 a.m. to 3:00 p.m. Monday thru Thursday
Fridays until 2:00 p.m.**



Dine in



Co-workers and guests have ample space

Credit Union

(ATM)

N.A.R.C
Federal Credit Union

**"We Serve The People Who Serve
the World of Agriculture"**

**No need to commute to the bank
(301) 474-0200 Fax (301) 474-0099**



Make transactions on your break



Staff available for all your banking needs



Fitness

Center



**Open from 11:00 a.m. to 7:00 p.m.
Building 1-L215 (301) 504-2495 Fax (301) 504-2496**



State of the art equipment
Always consult your physician before starting



Get rid of the stress



Start a new health program for yourself



Call for group schedules

Loading

Dock



(301) 504-2406 7:30 a.m. to 5:00 p.m.



Signage to direct you to the delivery area



Daily deliveries

The background is a dark green color with several lighter green, wavy, ribbon-like shapes that create a sense of movement. A small, horizontal gold ribbon is visible on the right side of the image.

Mail Room

Operations



**Operation hours 8:00 a.m. to 5:00 p.m. Located:1-L170 (301) 504-2431
Personal Mail Drop Box: Lower Level Building 1 by elevator**



Mail received as promptly as possible



Copy

Center



**Operated by B.I.S.M. (Blind Industries and Services of Maryland)
7:00 a.m. to 5:00 p.m. (301) 504-2429 Located: 1-L-205**



All your copy needs are met by the staff



Building #2



Health

Unit



The waiting area is supplied with a variety of health information



A Registered Nurse is on duty



Equipped for your basic needs



**Child
Development
Center**

**WELCOME
TO OUR
FAMILY
AT**

USDA SMALL WONDERS



**Located at 2-L112 Hours 6:30 a.m. to 6:00 p.m.
(301) 504-2392**



Children attending are from 6 weeks to 5 years of age



The Toddlers go on tours and are greeted by the staff



Imagination is a key figure to development



You are never too young to learn the use of computers



Great area to burn off some excess energy



Nursing Mothers' Room



Quiet time for you and baby

Telework Center



**Mon.-Fri. 6:00 a.m. to 6:00 p.m. Location: 2-L216C
(301) 504-3783 or 504-3050 Fax: (301) 504-3678**



Handicapped accommodations are available.

Persons with disabilities who require alternative means should contact USDA's TARGET Center at (202) 720-2600



Teleworking hours are determined by you and your supervisor



Task Force Unit is available for 8 to 12 employees for no more than 90 days

**Building 3 and 4 are occupied by
Various agencies of USDA**



Building #4



Building #3



The Farmers Market



Market starts in June and ends in September
Location: Parking Lot at the Carver Center
10:00 a.m. to 2:00 p.m.



Enjoy the many varieties of fresh produce



Jams and Jellies are available



Vendors come from various areas of Maryland and Pennsylvania



Open to the public



**If interested in occupying space call
(301) 504-1776 Customer Services**



Start landscaping your yards or patio garden



**There are regular vendors that come every year.
Sometimes you can get a surprise**



No matter who you are everyone finds something good

The background is a dark green color with several lighter green, wavy, ribbon-like shapes that create a sense of movement. In the top right corner, there is a small, horizontal gold-colored bar.

Shuttle Service



**Round trip shuttle service runs every 20 minutes between
George Washington Carver Center, B.A.R.C. West,
National Agriculture Library and METRO Train Station (Beltsville)
6:00 a.m. to 6:00 p.m. Monday thru Friday**



Round trip shuttle service from the George Washington Carver Center to the USDA South Building in Washington D.C. is 90 minutes

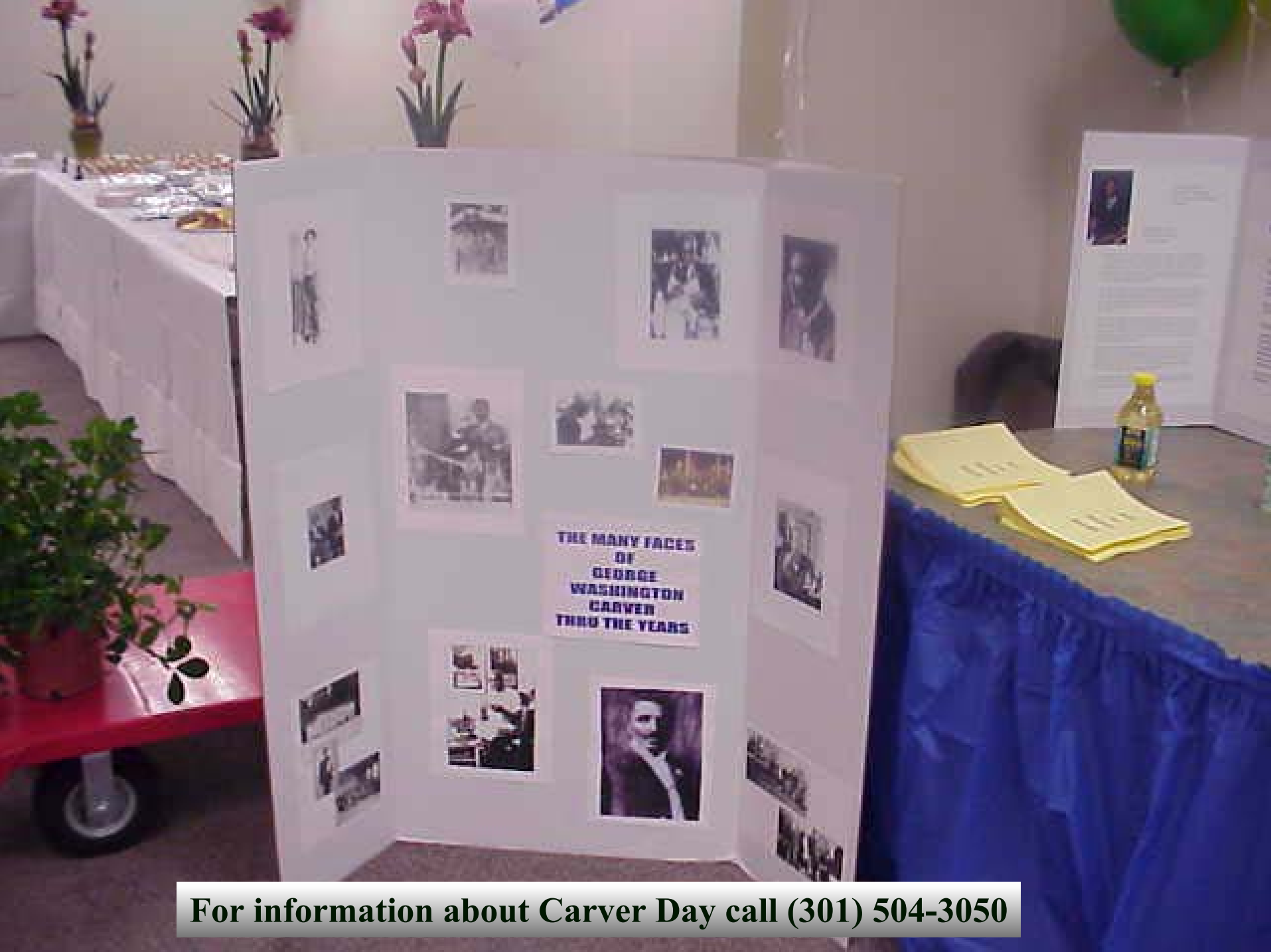
**The
George Washington Carver
Center's
Annual Carver Day
(First Wednesday in October)**

What is Biodiesel?

- A fuel for any diesel engine
- Made from domestically produced, renewable resources that are biodegradable and non-toxic
- Premium performance: high lubricity, cetane, and BTU content
- Used in pure form (B100) or blended with diesel at any level
- Commercially available in all 50 states
- Reduces emissions, registered with the Environmental Protection Agency
- Highest energy balance of any fuel (2.4 to 1)
- Safest fuel to handle and store



Displays and Information



For information about Carver Day call (301) 504-3050



**Do you know how
Peanuts, Soy Beans
and Sweet Potatoes
are grown?**



The Choir sings some of Dr. Carver's favorite songs



Everyone enjoys the Tasting Tables



All items for the Tasting Table have either Peanuts, Sweet Potatoes or Soy products in them.

**December
Holiday Concerts
Featuring**

Local High & Middle Schools



During the month of December...



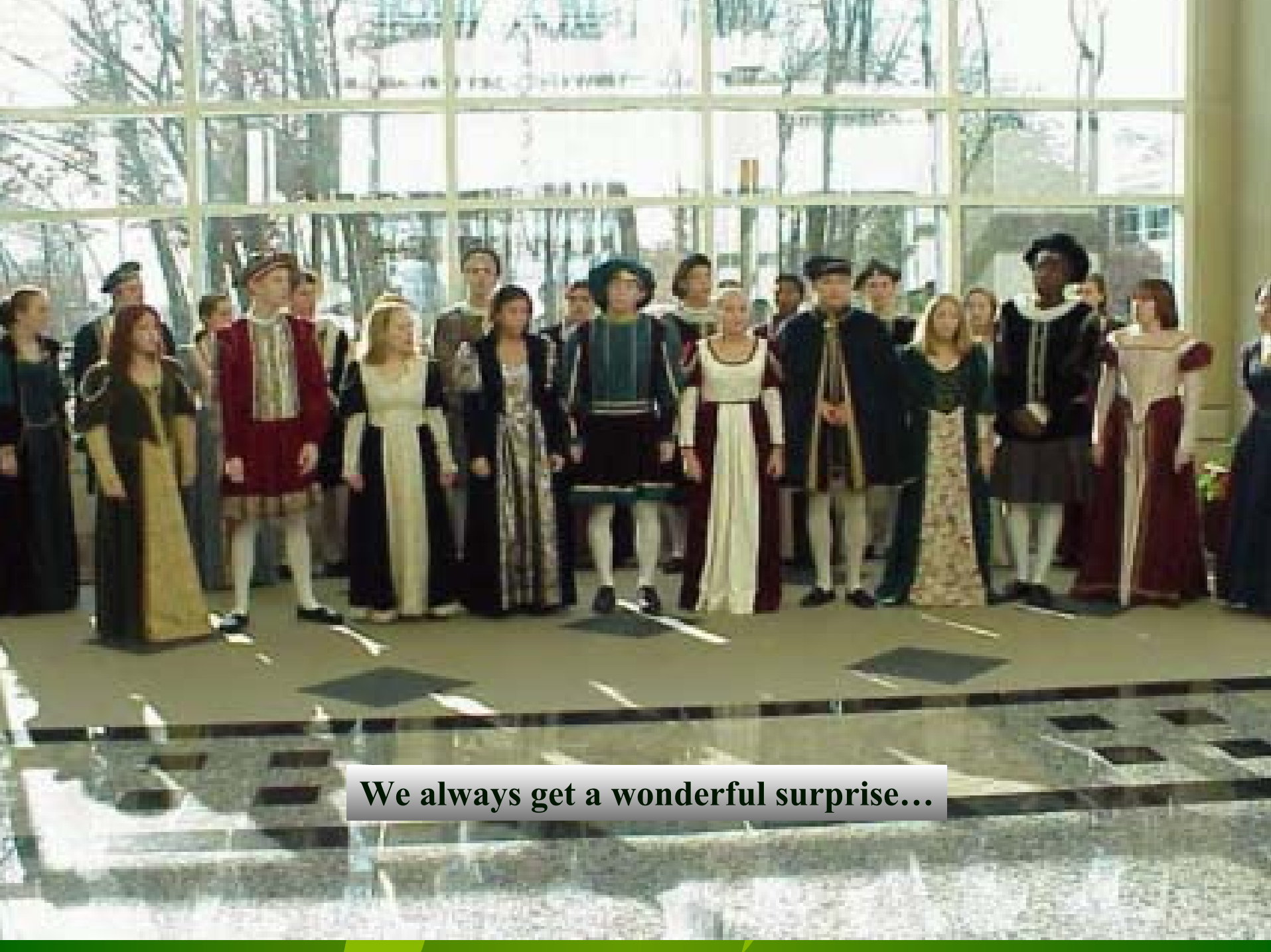
To get us into the Holiday mood...



Students from 6 various High and Middle Schools...



Volunteer their time to entertain us with their talented voices.



We always get a wonderful surprise...



**You must come to see and hear them.
Look for the posters during the month of December**

**Please feel free to contact the
George Washington Carver Center's
Customer Services at**

301 504-1776

8:30 a.m. to 5:30 p.m. Monday thru Friday

Holidays excluded