

Notes: The proposed transmission corridor is shown in dark purple. See EIS Sections 2.2.12 and 2.4.11 for discussion. Locations of potential impacts to NWI- mapped forested wetlands are shown in boxed areas. See detail Figures N-3a through N-3k for potential 150-foot wide alignment locations. Base maps are NWI wetland maps.

Figure N-3. Transmission Corridor--Norborne to Sedalia/Mt. Hulda

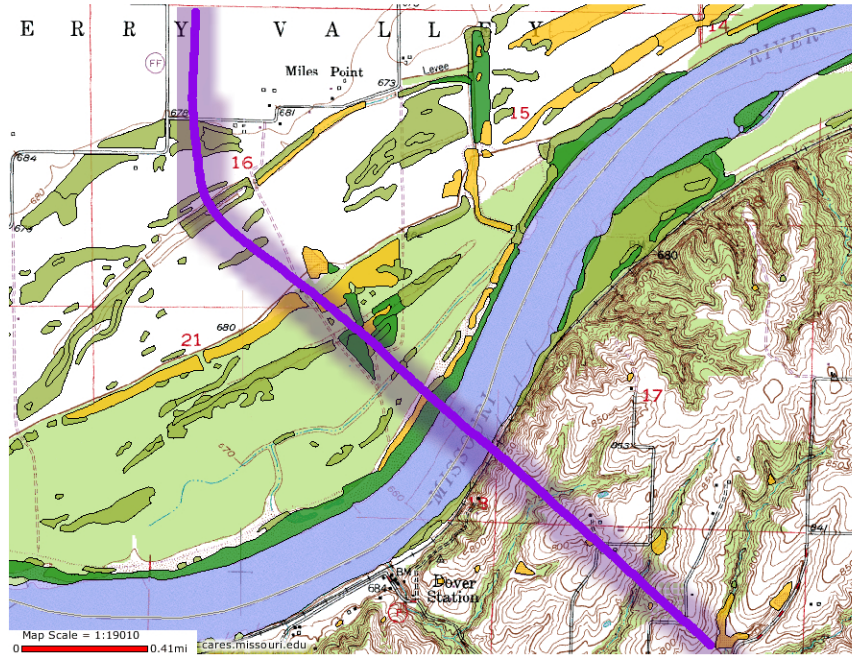


Figure N-3a
Missouri River

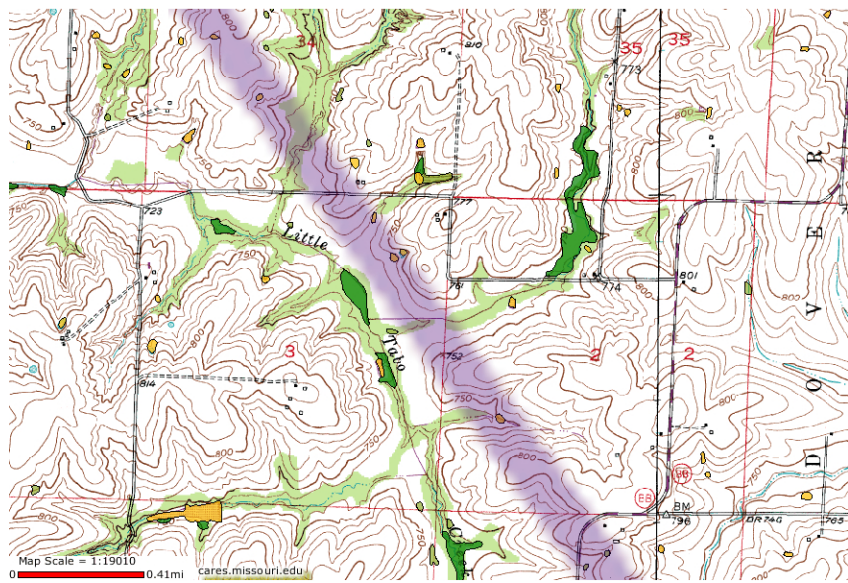


Figure N-3b
Little Tebo Creek

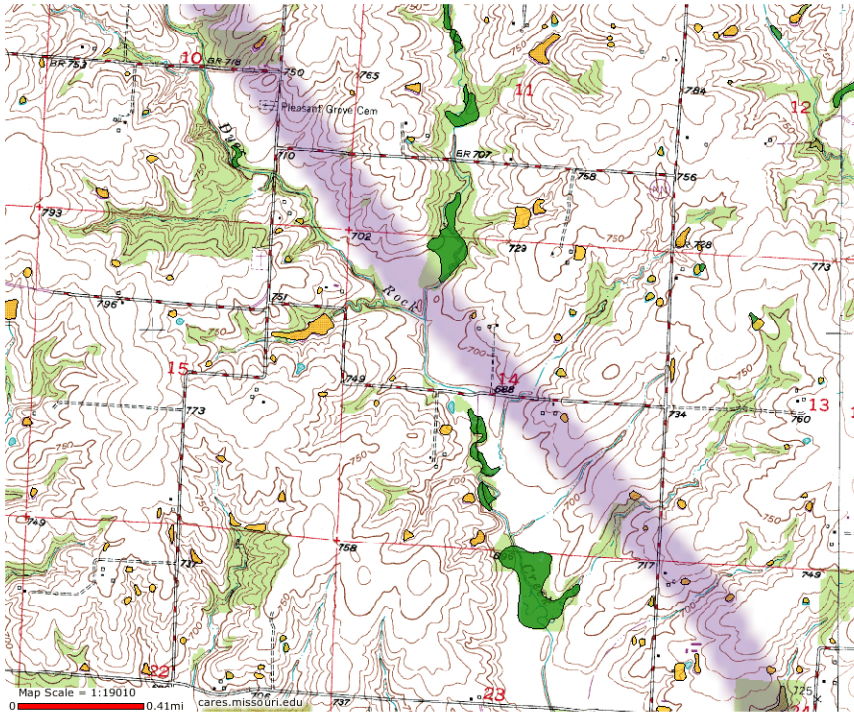


Figure N-3c
Dyer Rock Creek

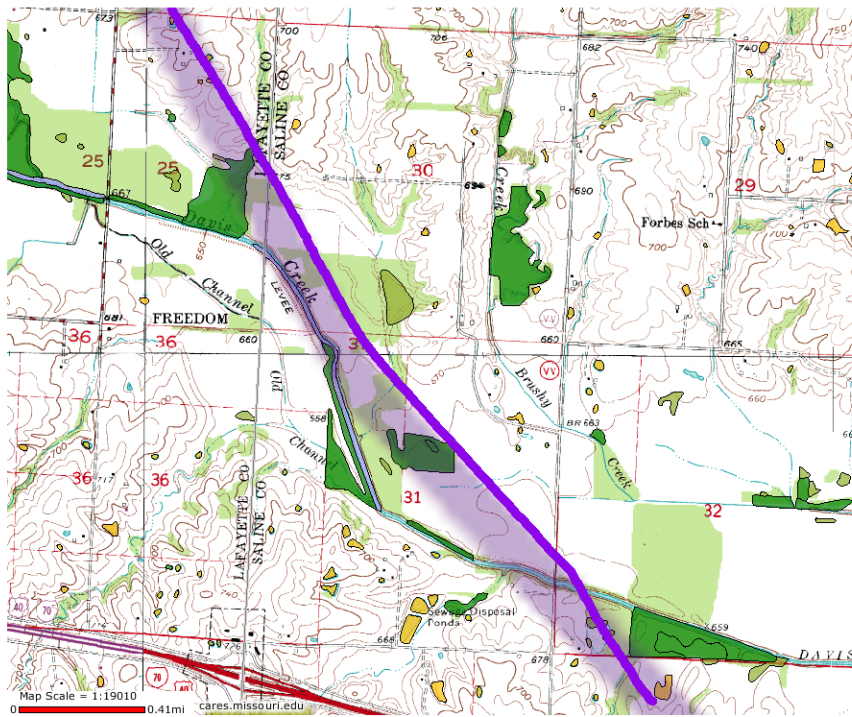


Figure N-3d
Davis Creek

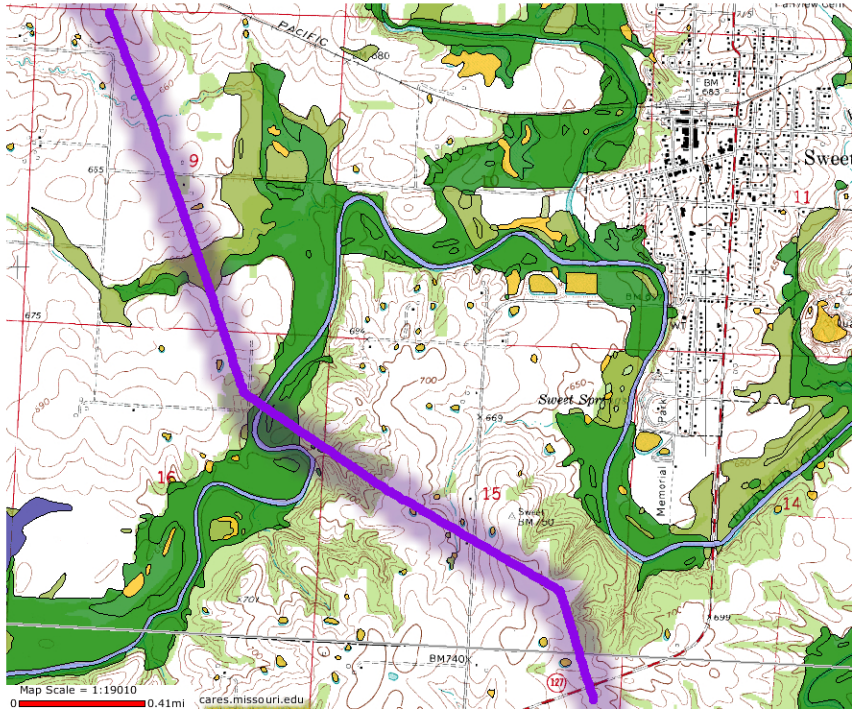


Figure N-3e
Blackwater River

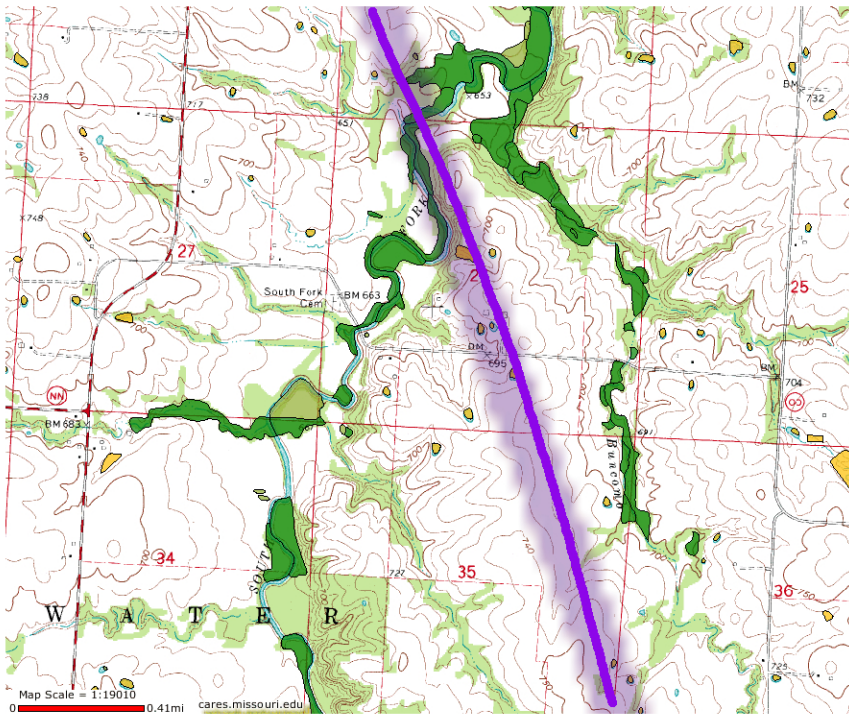


Figure N-3f
South Fork

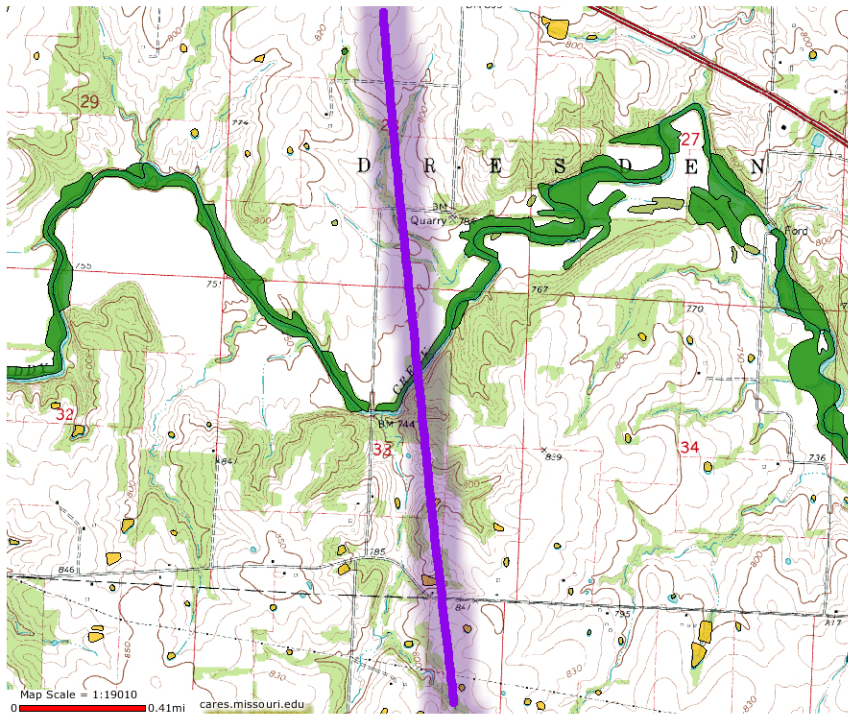


Figure N-3g
Muddy Creek

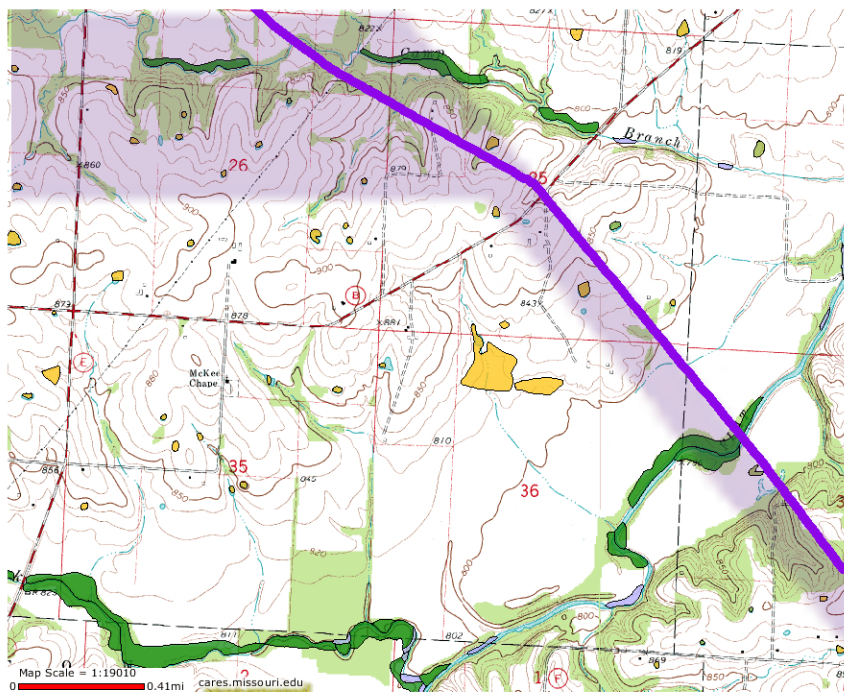


Figure N-3h
Flat Creek

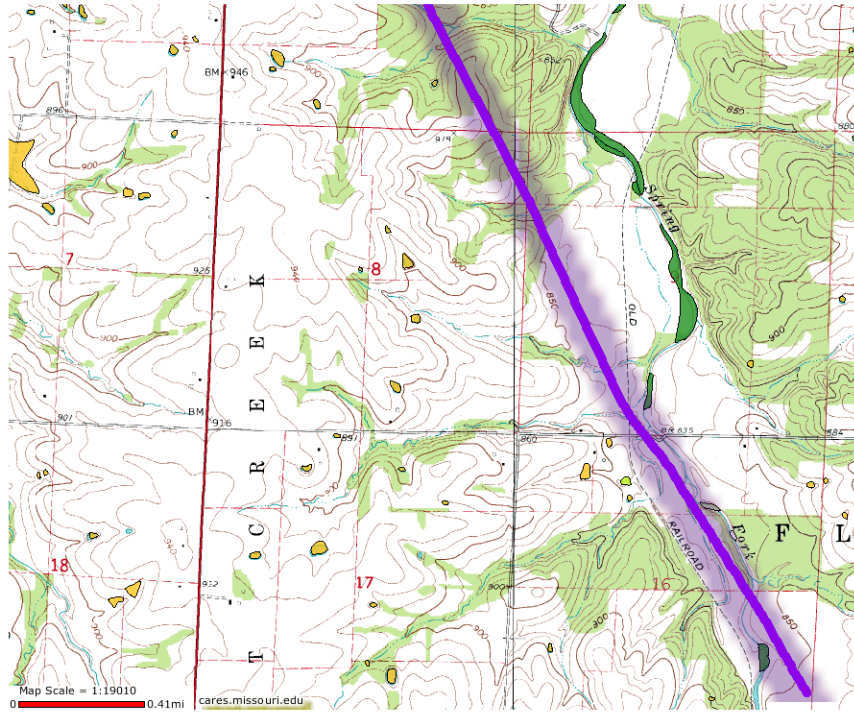


Figure N-3i
Spring Fork

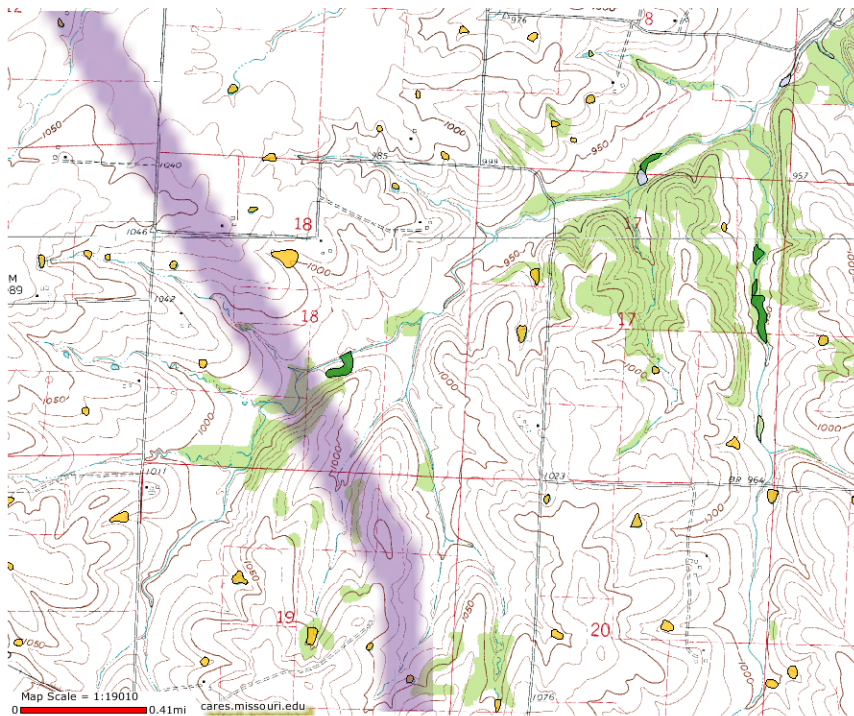


Figure N-3j
Lake Creek

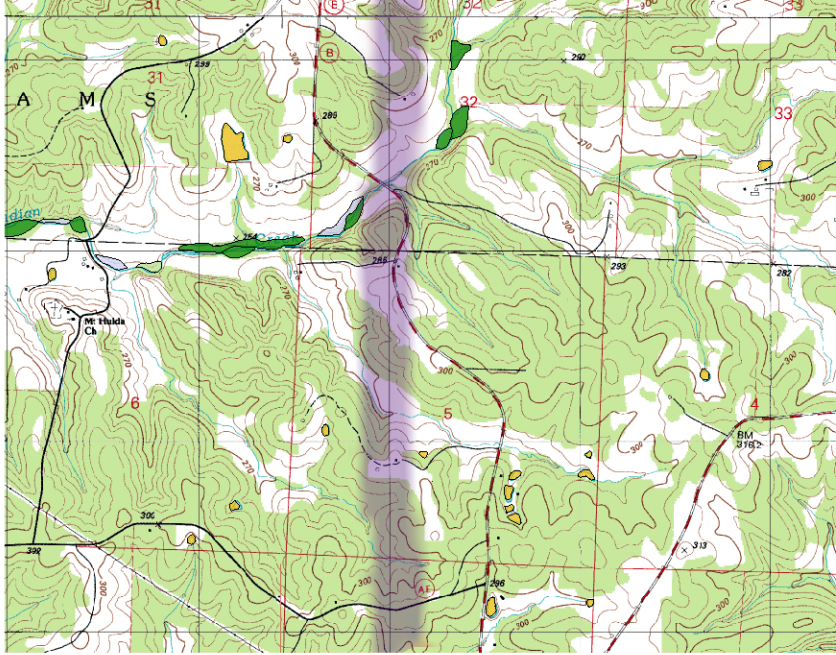


Figure N-3k
Indian Creek