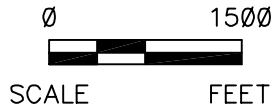
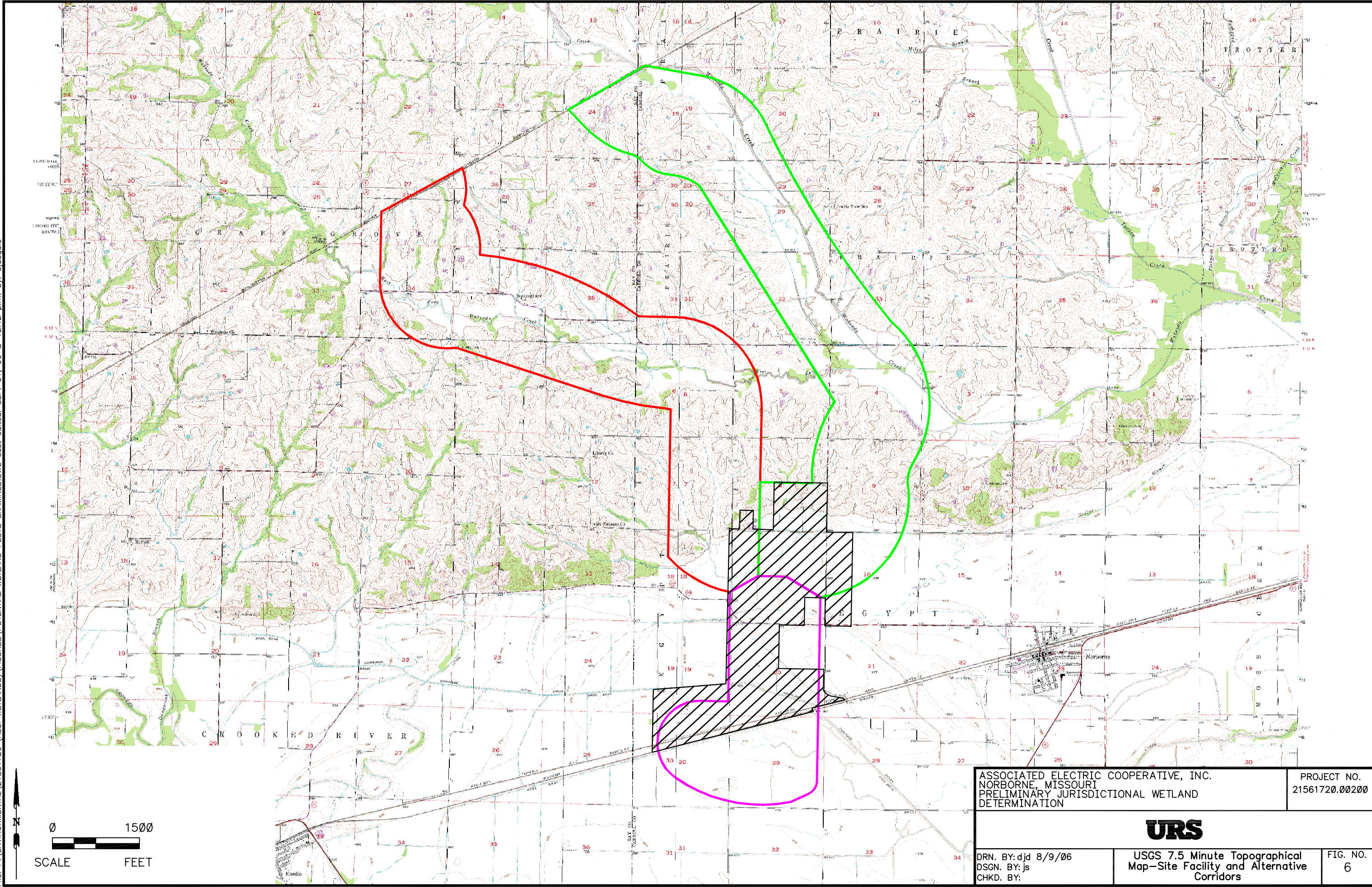


File: P:\ENVIRONMENTAL\21561720 (AECI WETLANDS)\FIGURES\POTENTIAL WETLAND PLOTS EXAMINED.DWG Last edited: SEP. 01. 06 @ 12:42 p.m. by: djdegu0



SCALE FEET

ASSOCIATED ELECTRIC COOPERATIVE, INC.  
NORBORNE, MISSOURI  
PRELIMINARY JURISDICTIONAL WETLAND  
DETERMINATION

PROJECT NO.  
21561720.00200



DRN. BY: djd 8/9/06  
DSGN. BY: js  
CHKD. BY:

USGS 7.5 Minute Topographical  
Map—Site Facility and Alternative  
Corridors

FIG. NO.  
6



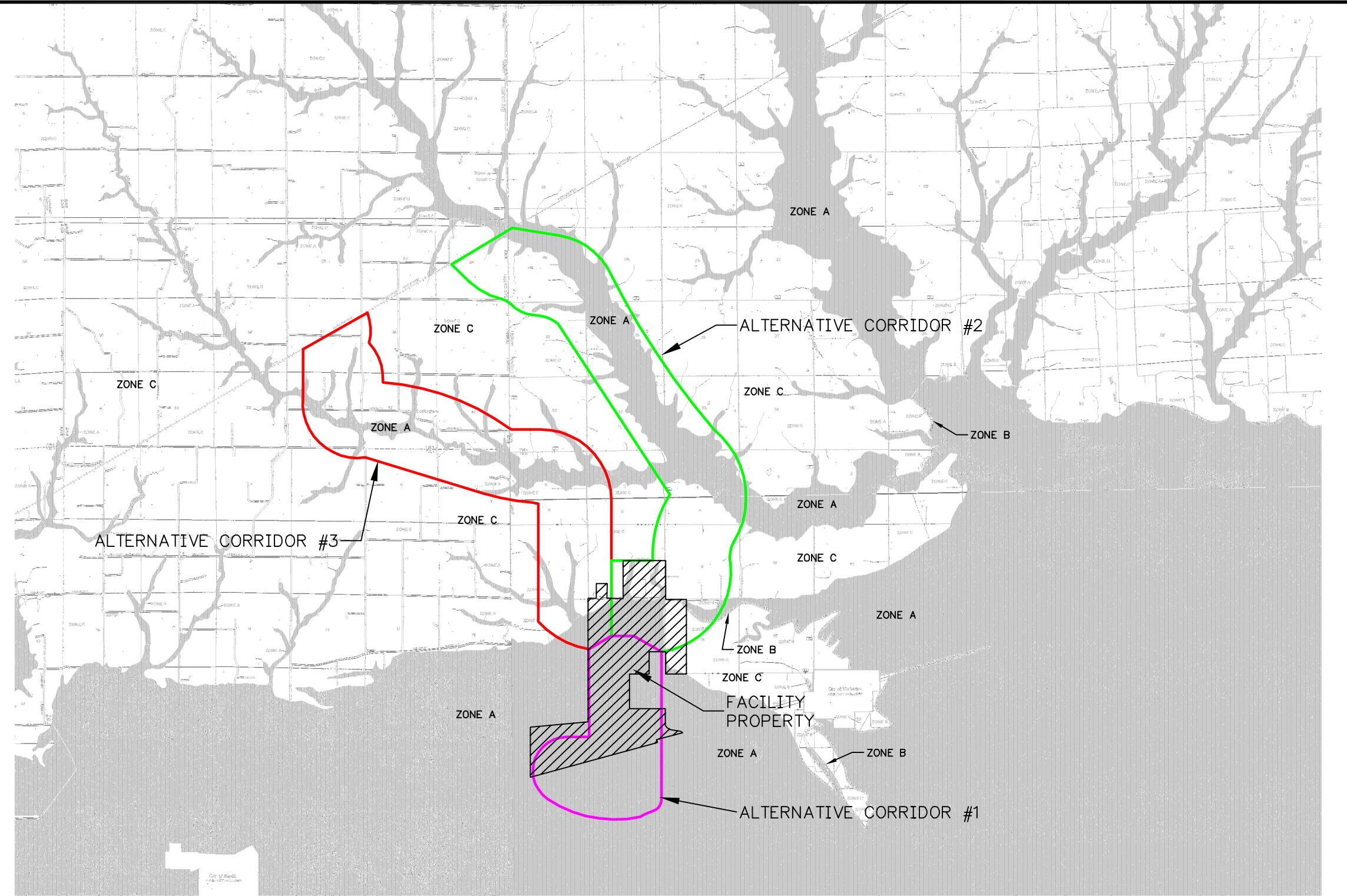
**KEY TO MAP**

- 500-Year Flood Boundary
- 100-Year Flood Boundary
- Zone Designations\*
- 100-Year Flood Boundary
- 500-Year Flood Boundary
- Base Flood Elevation Line With Elevation in Feet\*\*
- Base Flood Elevation in Feet Where Uniform Within Zone\*\*
- Elevation Reference Mark
- Zone D Boundary
- River Mile
- Approximate 100-Year Flood Boundary

\*\* Referenced to the National Geodetic Vertical Datum of 1929

**\*EXPLANATION OF ZONE DESIGNATIONS**

ZONE	EXPLANATION
A	Areas of 100-year flood; base flood elevations and flood hazard factors not determined.
A0	Areas of 100-year shallow flooding where depths are between one (1) and three (3) feet; average depths of inundation are shown, but no flood hazard factors are determined.
AH	Areas of 100-year shallow flooding where depths are between one (1) and three (3) feet; base flood elevations are shown, but no flood hazard factors are determined.
A1-A30	Areas of 100-year flood; base flood elevations and flood hazard factors determined.
A99	Areas of 100-year flood to be protected by flood protection system under construction; base flood elevations and flood hazard factors not determined.
B	Areas between limits of the 100-year flood and 500-year flood; or certain areas subject to 100-year flooding with average depths less than one (1) foot or where the contributing drainage area is less than one square mile; or areas protected by levees from the base flood. (Medium shading)
C	Areas of minimal flooding. (No shading)
D	Areas of undetermined, but possible, flood hazards.
V	Areas of 100-year coastal flood with velocity (wave action); base flood elevations and flood hazard factors not determined.
V1-V30	Areas of 100-year coastal flood with velocity (wave action); base flood elevations and flood hazard factors determined.



INFORMATION OBTAINED FROM FOLLOWING SOURCE:  
 FEDERAL EMERGENCY MANAGEMENT AGENCY, FLOOD INSURANCE RATE MAP

- CARROLL COUNTY, MISSOURI, PANEL 100 OF 225, COMMUNITY-PANEL NUMBER 290057 0100 B, EFFECTIVE DATE 10-17-96
- CARROLL COUNTY, MISSOURI, PANEL 175 OF 225, COMMUNITY-PANEL NUMBER 290057 0175 B, EFFECTIVE DATE 10-17-96
- RAY COUNTY, MISSOURI, PANEL 50 OF 150, COMMUNITY-PANEL NUMBER 290778 0050 B, EFFECTIVE DATE 01-19-83
- RAY COUNTY, MISSOURI, PANEL 100 OF 150, COMMUNITY-PANEL NUMBER 290778 0100 B, EFFECTIVE DATE 01-19-83

APPROXIMATE SCALE 1"=2000'

ASSOCIATED ELECTRIC COOPERATIVE, INC. NORBORNE, MISSOURI PRELIMINARY JURISDICTIONAL WETLAND DETERMINATION		PROJECT NO. 21561720.00200
<b>URS</b>		
DRN. BY: djd 8/9/06 DSGN. BY: js CHKD. BY:	FEMA FLOOD INSURANCE RATE MAPS - FACILITY PROPERTY AND ALTERNATIVE CORRIDORS	FIG. NO. 7

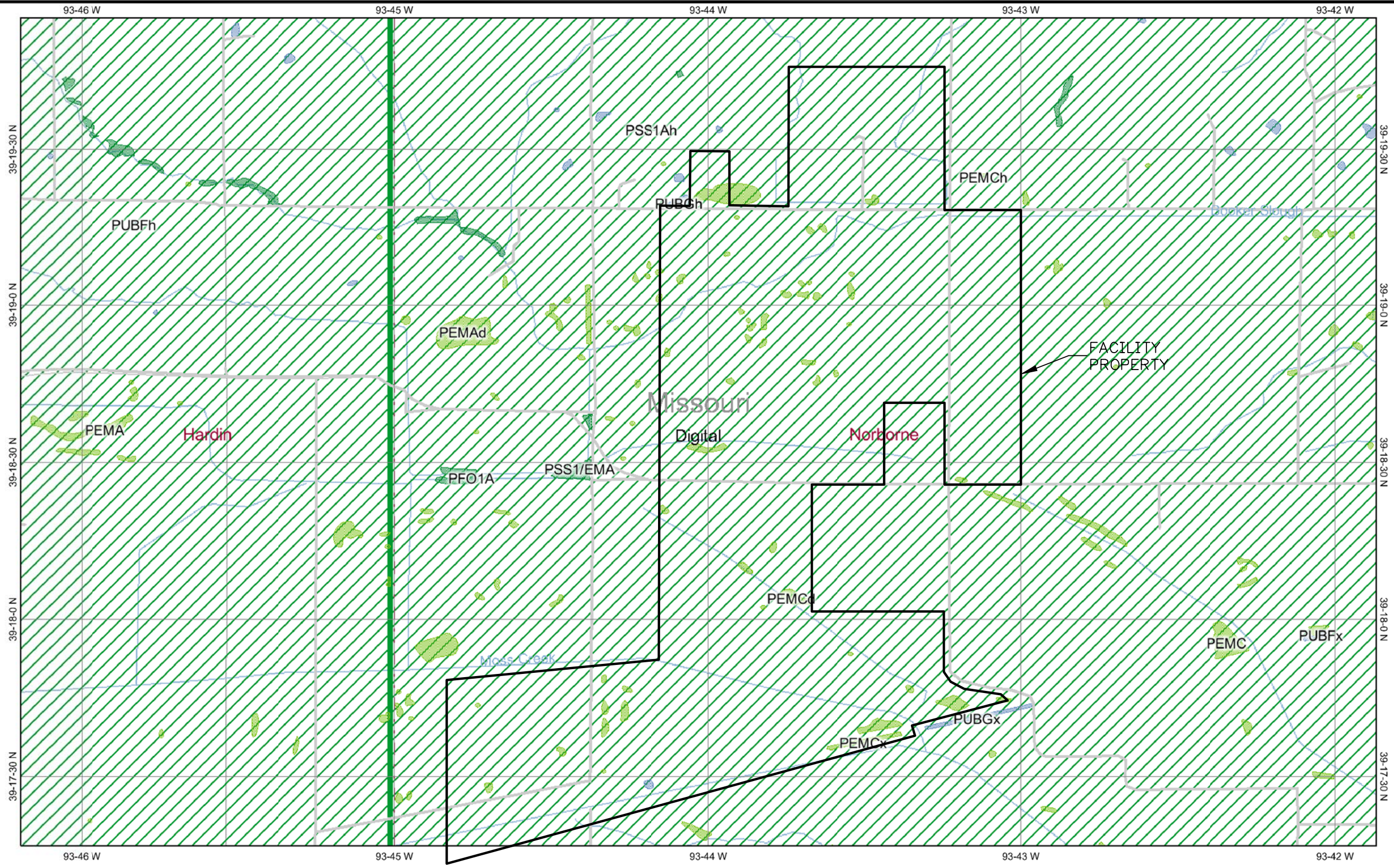
File: P:\ENVIRONMENTAL\21561720 (AEC WETLANDS)\FIGURES\FACILITY PROPERTY & ALTERNATIVE CORRIDORS MAP.DWG Last edited: SEP. 01. 06 @ 12:58 p.m. by: djfleguid





**Legend**

- Interstate
- Major Roads
- Other Road
- Interstate
- State highway
- US highway
- Roads
- Cities
- USGS Quad Index 24K
- Lower 48 Wetland Polygons**
- Estuarine and Marine Deepwater
- Estuarine and Marine Wetland
- Freshwater Emergent Wetland
- Freshwater Forested/Shrub Wetland
- Freshwater Pond
- Lake
- Other
- Riverine
- Metadata**
- Non-Digital
- Digital
- Scan
- Lower 48 Available Wetland Data**
- Non-Digital
- Digital
- No Data
- Scan
- NHD Streams
- Counties 100K
- Urban Areas 300K
- States 100K
- South America
- North America



File: P:\ENVIRONMENTAL\21561720 (AEC) WETLANDS\FIGURES\FACILITY PROPERTY MAP.DWG Last edited: SEP. 01. 06 @ 1:08 p.m. by: djdeguid



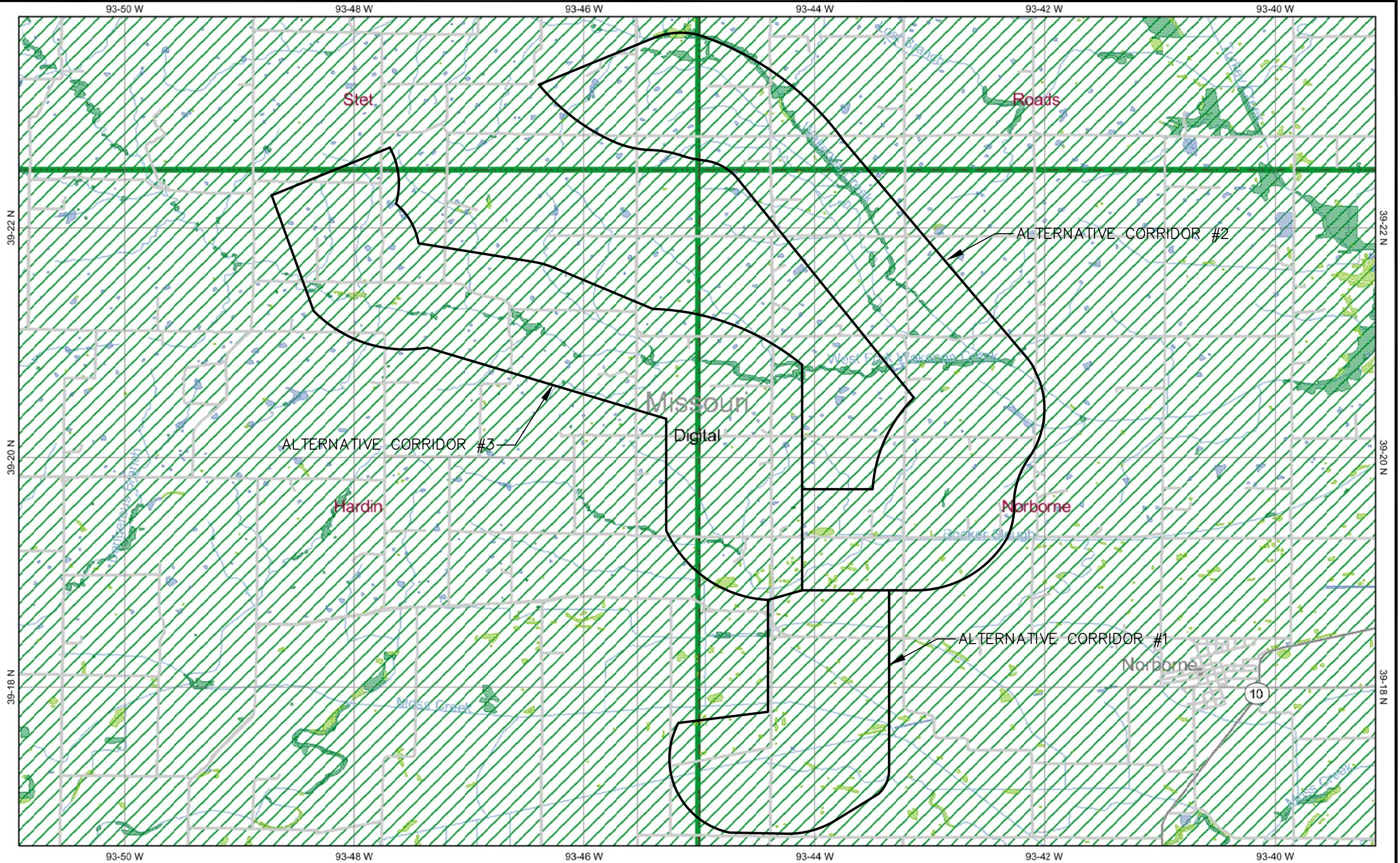
ASSOCIATED ELECTRIC COOPERATIVE, INC. NORBORNE, MISSOURI PRELIMINARY JURISDICTIONAL WETLAND DETERMINATION		PROJECT NO. 21561720.00200
<b>URS</b>		
DRN. BY: djd 8/9/06 DSGN. BY: js CHKD. BY:	USFWS NATIONAL WETLAND INVENTORY MAP – FACILITY PROPERTY	FIG. NO. 8





**Legend**

- Interstate
- Major Roads
- Other Road
- Interstate
- State highway
- US highway
- Roads
- Cities
- USGS Quad Index 24K
- Lower 48 Wetland Polygons**
- Estuarine and Marine Deepwater
- Estuarine and Marine Wetland
- Freshwater Emergent Wetland
- Freshwater Forested/Shrub Wetland
- Freshwater Pond
- Lake
- Other
- Riverine
- Metadata**
- Non-Digital
- Digital
- Scan
- Lower 48 Available Wetland Data**
- Non-Digital
- Digital
- No Data
- Scan
- NHD Streams
- Counties 100K
- Urban Areas 300K
- States 100K
- South America
- North America



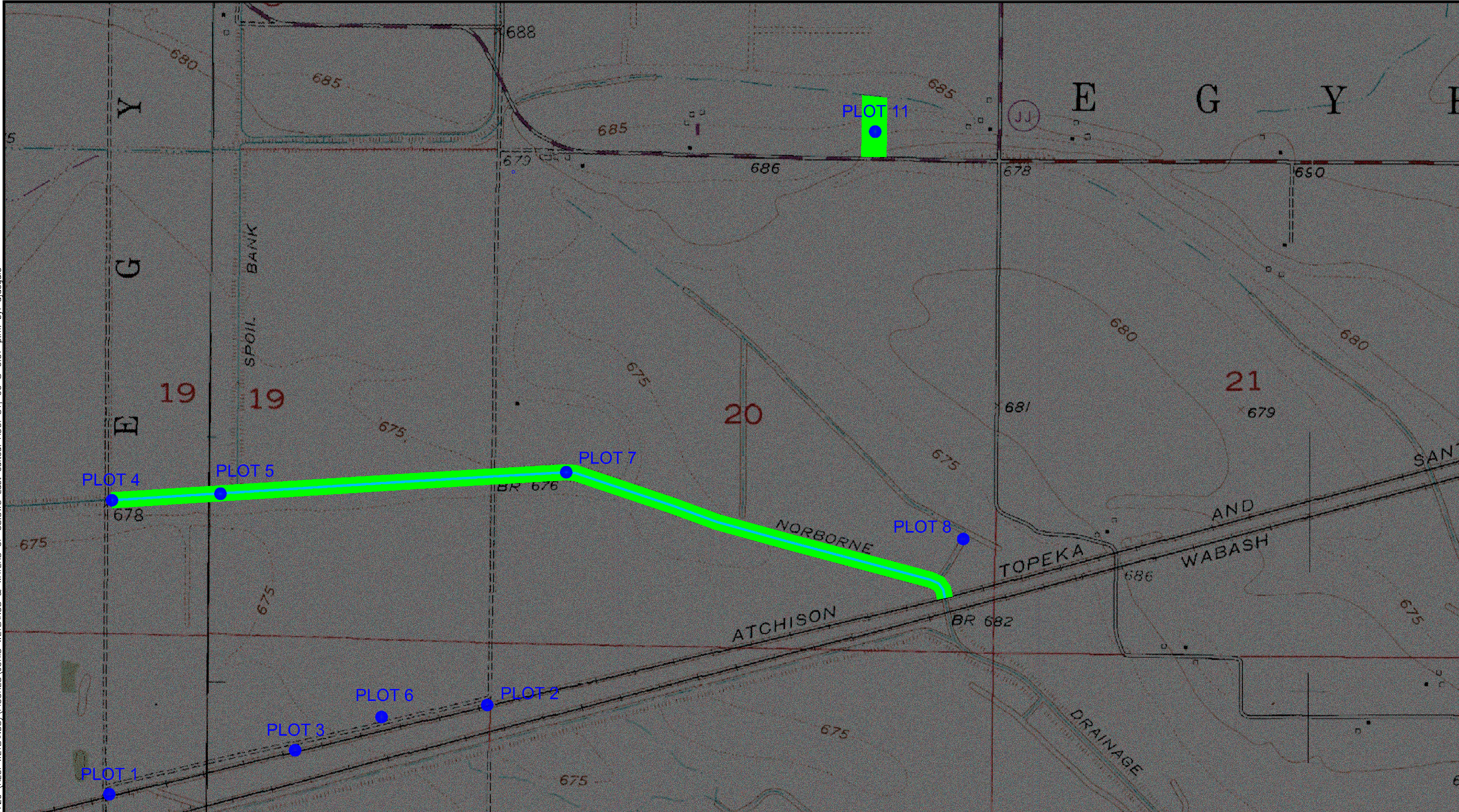
File: P:\ENVIRONMENTAL\21561720 (AECI WETLANDS)\FIGURES\CORRIDORS MAP.DWG Last edited: AUG. 31. 06 @ 5:18 p.m. by: chammhd



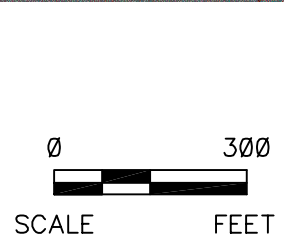
ASSOCIATED ELECTRIC COOPERATIVE, INC. NORBORNE, MISSOURI PRELIMINARY JURISDICTIONAL WETLAND DETERMINATION		PROJECT NO. 21561720.00200
<b>URS</b>		
DRN. BY: djd 8/9/06 DSGN. BY: js CHKD. BY:	USFWS NATIONAL WETLAND INVENTORY MAP – ALTERNATIVE CORRIDORS	FIG. NO. 9



File: P:\ENVIRONMENTAL\21561720 (AECI WETLANDS)\FIGURES\JURIS WETLANDS & WATERS OF US.DWG Last edited: AUG. 31, 06 @ 6:07 p.m. by: dfdequid



- LINEAR WATERS OF THE UNITED STATES
- JURISDICTIONAL WETLANDS



ASSOCIATED ELECTRIC COOPERATIVE, INC. NORBORNE, MISSOURI PRELIMINARY JURISDICTIONAL WETLAND DETERMINATION		PROJECT NO. 21561720.00200
DRN. BY: djd 8/9/06 DSGN. BY: js CHKD. BY:	JURISDICTIONAL WETLANDS AND WATERS OF THE UNITED STATES	FIG. NO. 10