

**FACILITY
PROPERTY**

SITE



QUADRANGLE LOCATION

NOTE:
SITE AREA INCLUDES FACILITY PROPERTY AND
ALTERNATIVE CORRIDORS.



ASSOCIATED ELECTRIC COOPERATIVE, INC.
NORBORNE, MISSOURI
PRELIMINARY JURISDICTIONAL WETLAND DETERMINATION

PROJECT NO.
21561720.00200

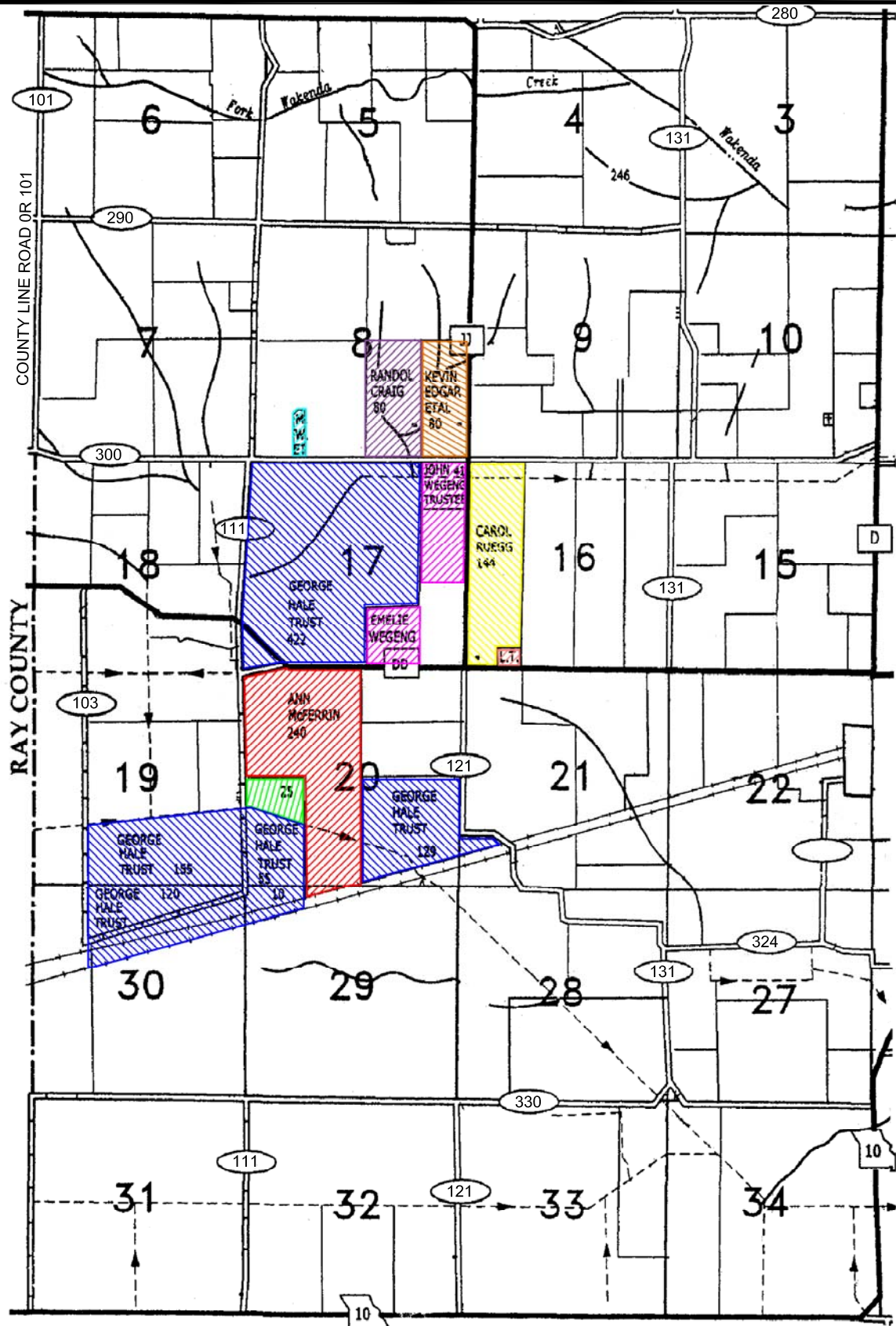


DRN. BY:djd 8/9/06
DSGN. BY:js
CHKD. BY:

General Study Area

FIG. NO.
1

File: P:\ENVIRONMENTAL\21561720 (AECI WETLANDS)\FIGURES\SITE MAP.DWG Last edited: AUG. 31, 06 @ 5:40 p.m. by: chsmith0



ASSOCIATED ELECTRIC COOPERATIVE, INC. NORBORNE, MISSOURI PRELIMINARY JURISDICTIONAL WETLAND DETERMINATION	PROJECT NO. 21561720.00200
---	-------------------------------

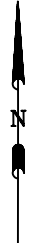


DRN. BY:djd 8/9/06
 DSGN. BY:js
 CHKD. BY:

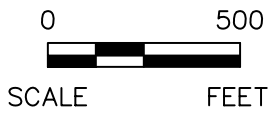
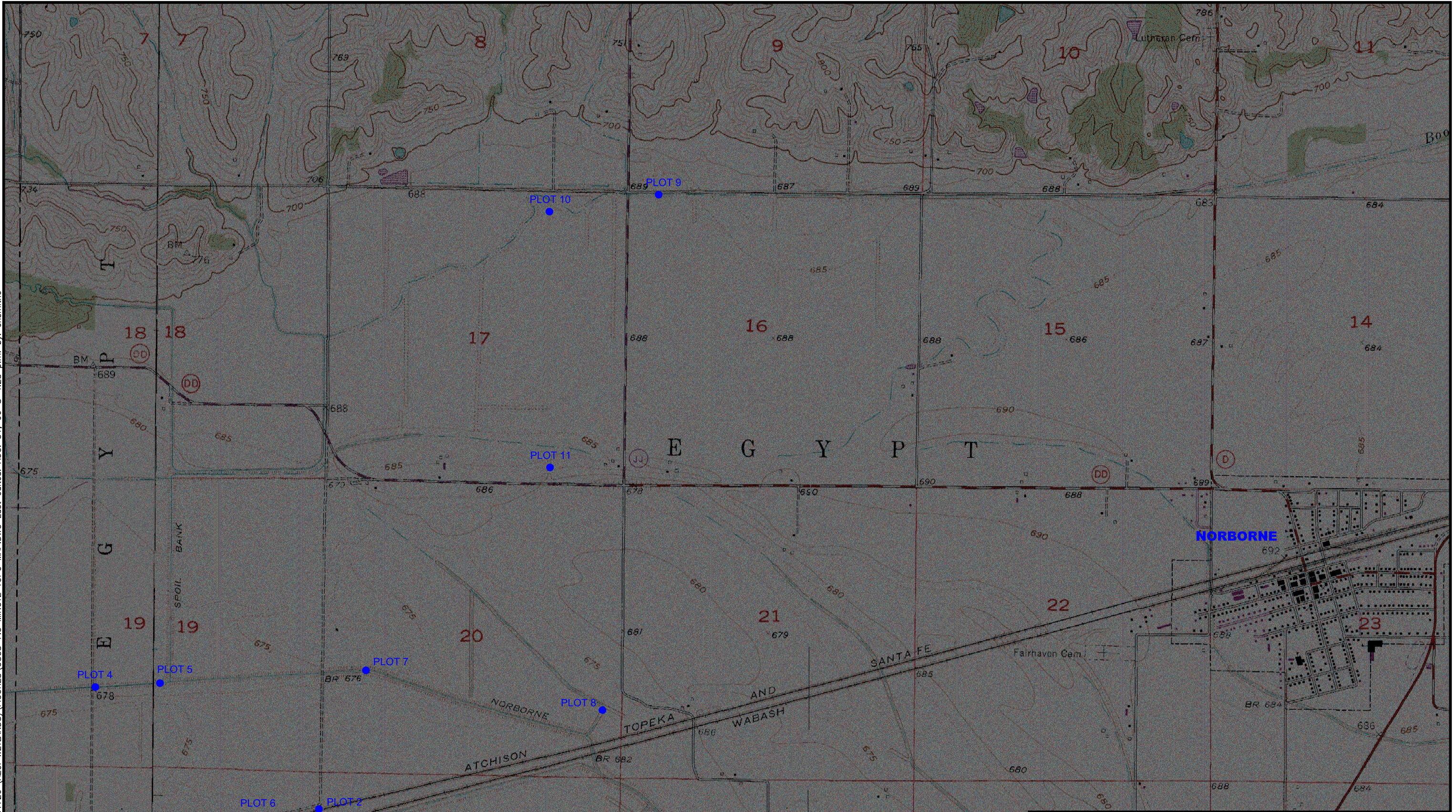
Site Map

FIG. NO.
 2

NOT TO SCALE

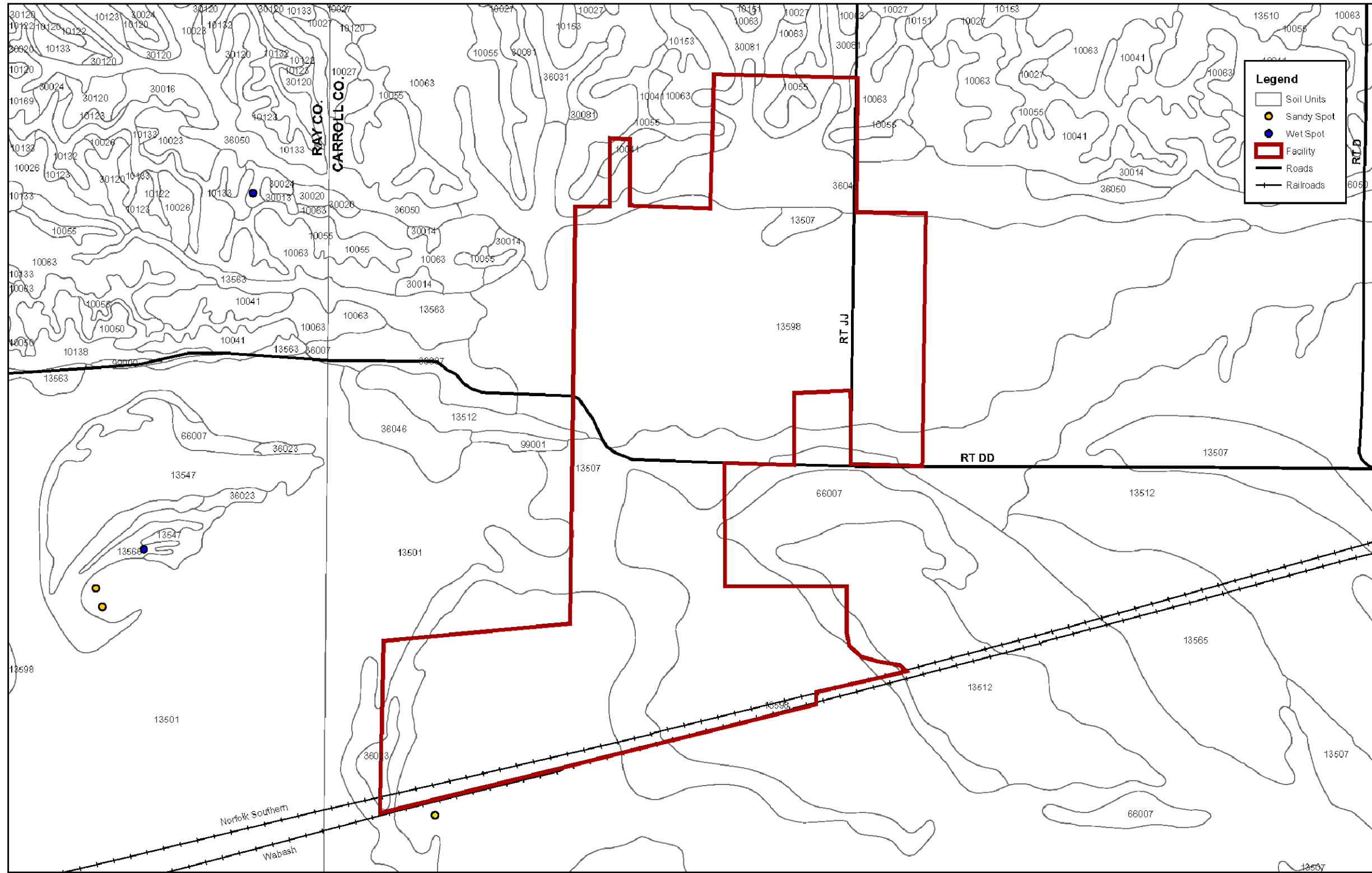


File: P:\ENVIRONMENTAL\21561720 (AECI WETLANDS)\FIGURES\USGS 7.5 MINUTE TOPO MAP.DWG Last edited: AUG. 31. 06 @ 4:28 p.m. by: chsmith0



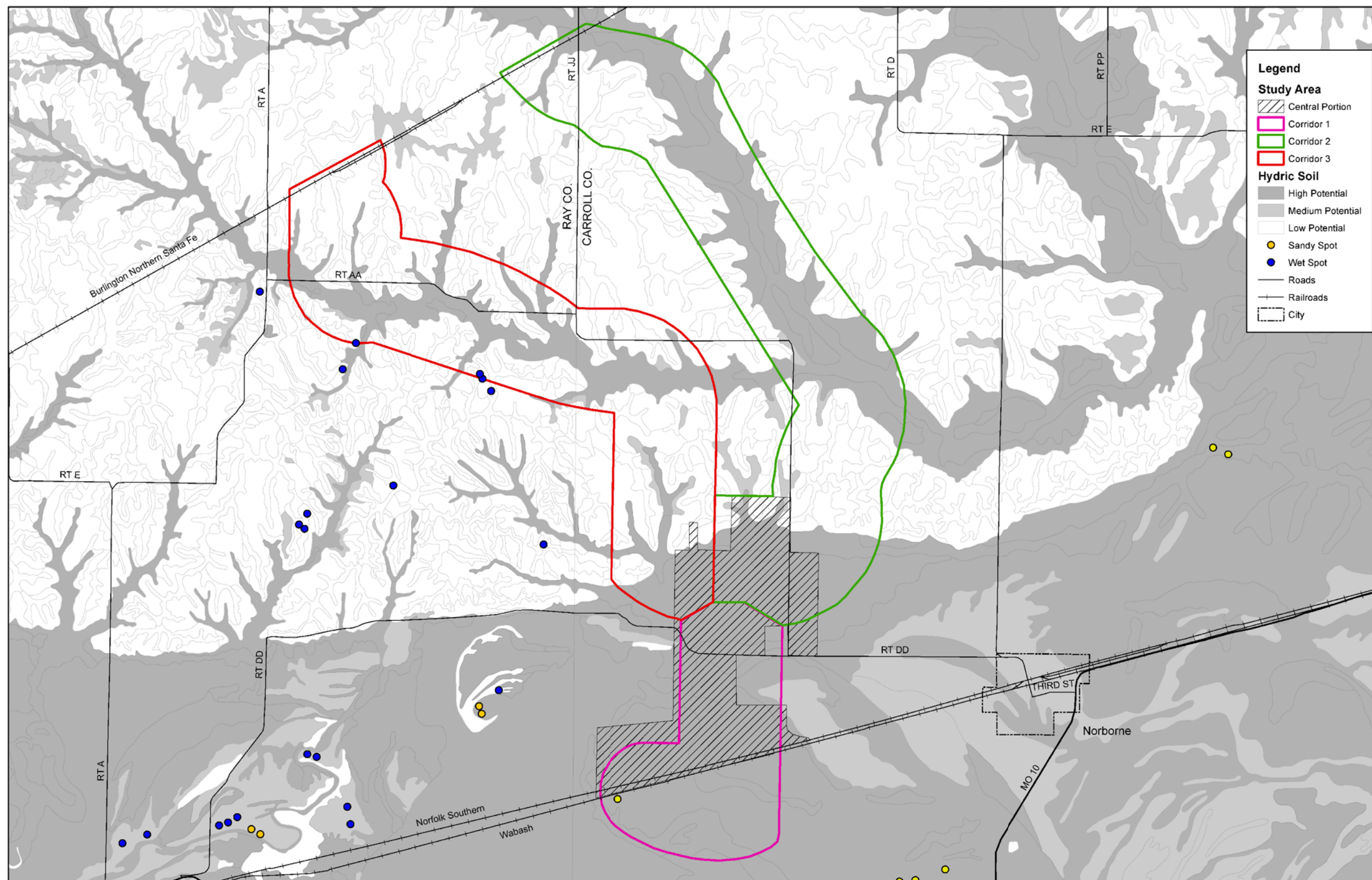
ASSOCIATED ELECTRIC COOPERATIVE, INC. NORBORNE, MISSOURI PRELIMINARY JURISDICTIONAL WETLAND DETERMINATION		PROJECT NO. 21561720.00200
URS		
DRN. BY: djd 8/9/06 DSGN. BY: js CHKD. BY:	Potential Wetland Plots Examined	FIG. NO. 3

File: P:\ENVIRONMENTAL\21561720 (AECI WETLANDS)\FIGURES\NRCS SOIL MAP FACILITY PROPERTY.DWG Last edited: AUG. 31, 06 @ 5:37 p.m. by: chm1h0



ASSOCIATED ELECTRIC COOPERATIVE, INC. NORBORNE, MISSOURI PRELIMINARY JURISDICTIONAL WETLAND DETERMINATION		PROJECT NO. 21561720.00200
URS		
DRN. BY: djd 8/9/06 DSGN. BY: js CHKD. BY:	NATURAL RESOURCES CONSERVATION SERVICE SOIL MAP-FACILITY PROPERTY	FIG. NO. 4

File: P:\ENVIRONMENTAL\21561720 (AEC WETLANDS)\FIGURES\NRCS SOIL MAP FACILITY PROPERTY & ALT CORRIDORS.DWG Last edited: SEP. 01, 06 @ 4:11 p.m. by: sjdeguid



ASSOCIATED ELECTRIC COOPERATIVE, INC. NORBORNE, MISSOURI PRELIMINARY JURISDICTIONAL WETLAND DETERMINATION		PROJECT NO. 21561720.00200
DRN. BY: djd 8/9/06 DSGN. BY: js CHKD. BY:	NATURAL RESOURCES CONSERVATION SERVICE SOIL MAP-FACILITY PROPERTY & ALTERNATIVE CORRIDORS	FIG. NO. 5