

349137
DAL
9-1-05

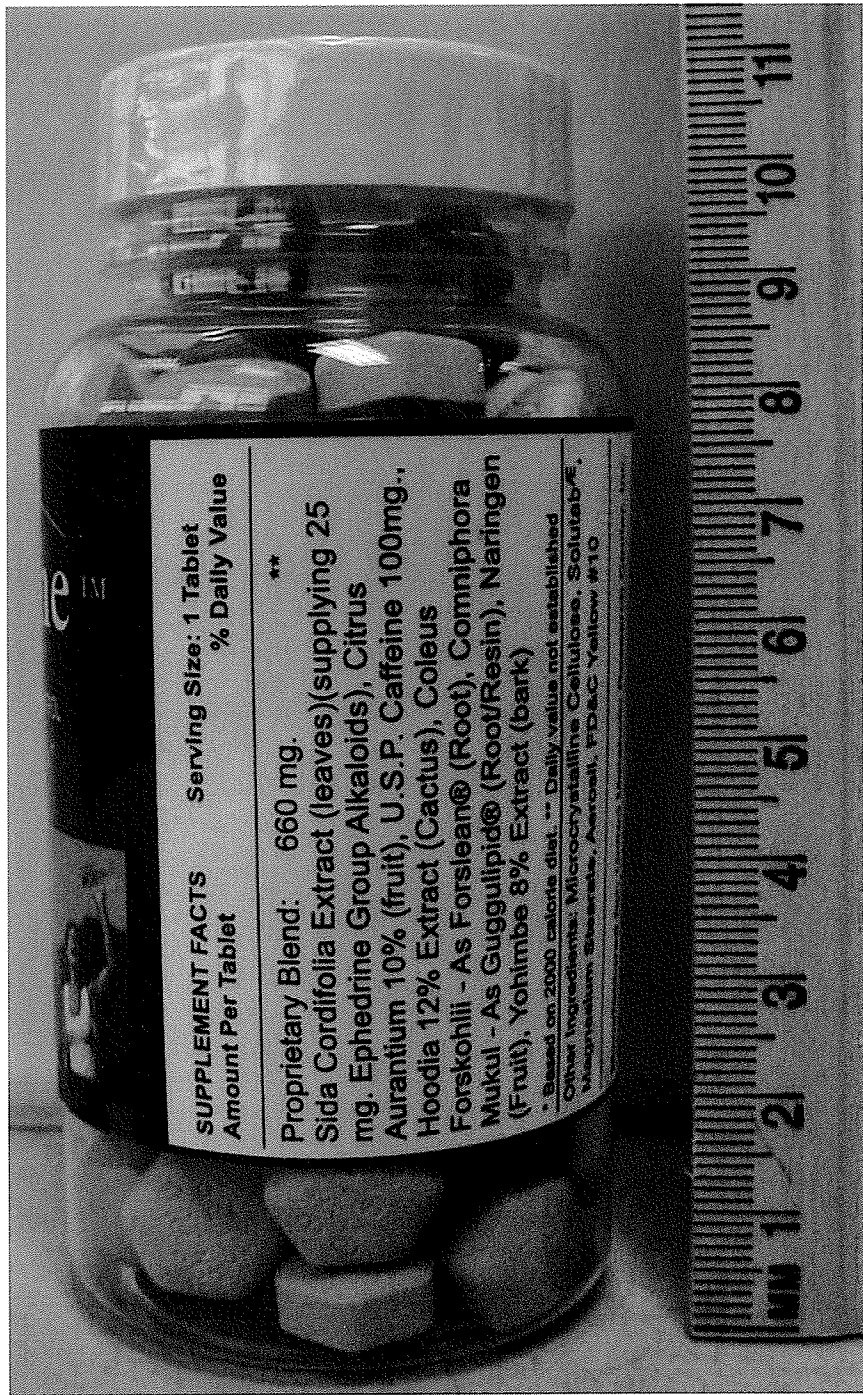
LABELING

Photocopy 1 of 6



LABELING

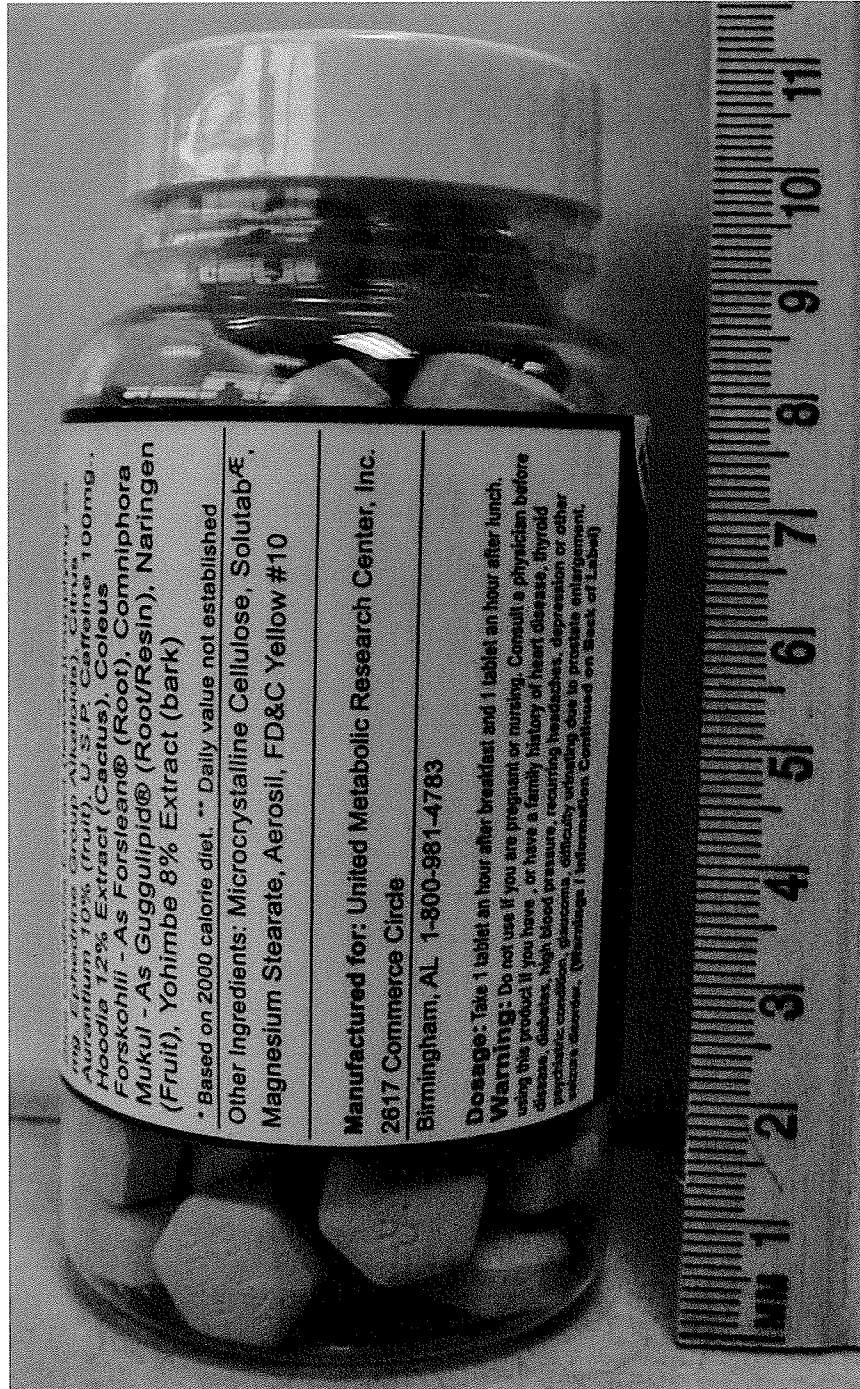
Photocopy 2 of 6



349137
DAL
9-1-05

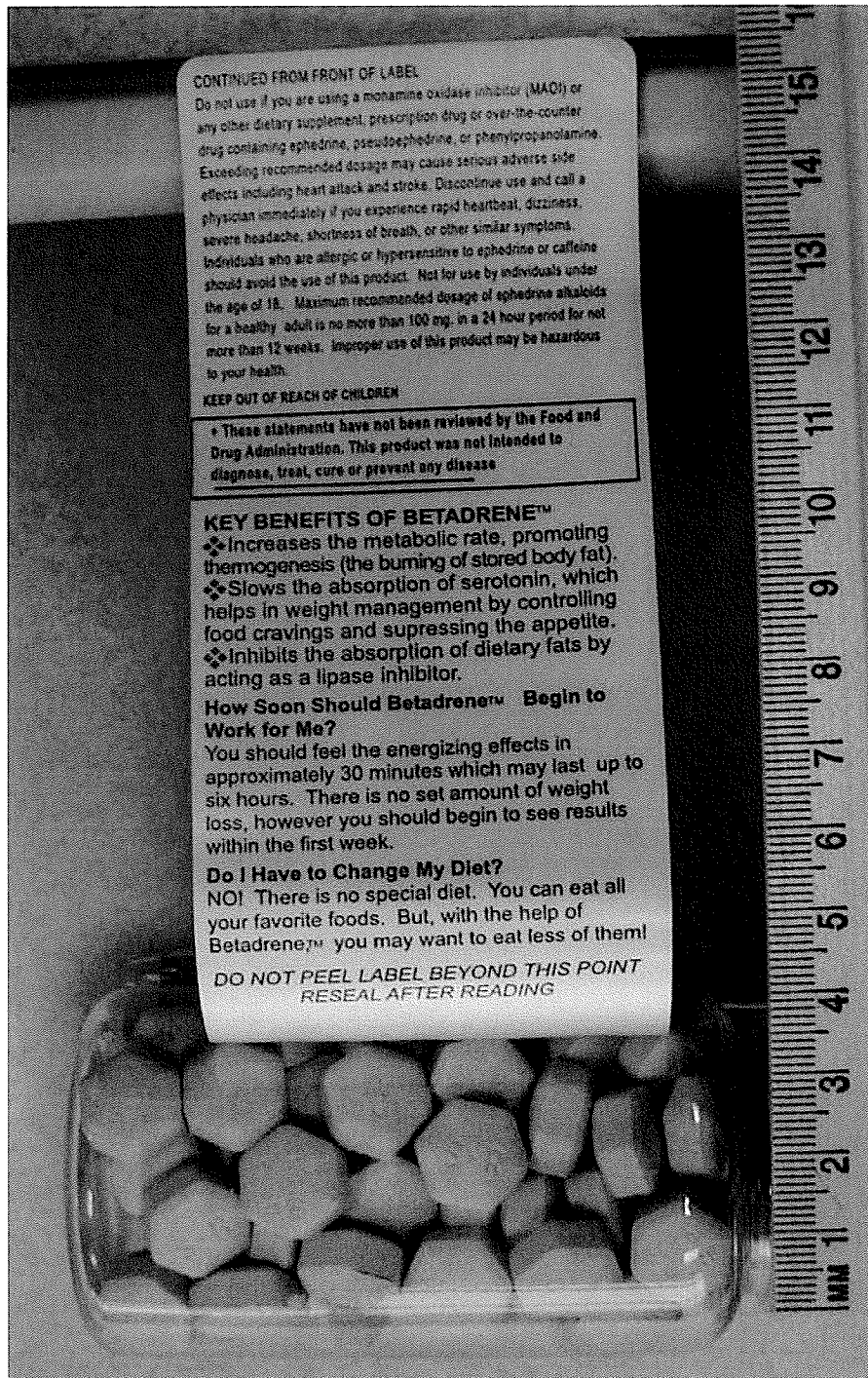
LABELING

Photocopy 3 of 6



LABELING

Photocopy 6 of 6



CONTINUED FROM FRONT OF LABEL

Do not use if you are using a monoamine oxidase inhibitor (MAOI) or any other dietary supplement, prescription drug or over-the-counter drug containing ephedrine, pseudoephedrine, or phenylpropanolamine. Exceeding recommended dosage may cause serious adverse side effects including heart attack and stroke. Discontinue use and call a physician immediately if you experience rapid heartbeat, dizziness, severe headache, shortness of breath, or other similar symptoms. Individuals who are allergic or hypersensitive to ephedrine or caffeine should avoid the use of this product. Not for use by individuals under the age of 18. Maximum recommended dosage of ephedrine alkaloids for a healthy adult is no more than 100 mg. in a 24 hour period for not more than 12 weeks. Improper use of this product may be hazardous to your health.

KEEP OUT OF REACH OF CHILDREN

* These statements have not been reviewed by the Food and Drug Administration. This product was not intended to diagnose, treat, cure or prevent any disease

KEY BENEFITS OF BETADRENE™

- ❖ Increases the metabolic rate, promoting thermogenesis (the burning of stored body fat).
- ❖ Slows the absorption of serotonin, which helps in weight management by controlling food cravings and suppressing the appetite.
- ❖ Inhibits the absorption of dietary fats by acting as a lipase inhibitor.

How Soon Should Betadrene™ Begin to Work for Me?

You should feel the energizing effects in approximately 30 minutes which may last up to six hours. There is no set amount of weight loss, however you should begin to see results within the first week.

Do I Have to Change My Diet?

NO! There is no special diet. You can eat all your favorite foods. But, with the help of Betadrene™ you may want to eat less of them!

**DO NOT PEEL LABEL BEYOND THIS POINT
RESEAL AFTER READING**