

CHART 1: PRIVATE SECTOR JOB COUNT
 (Seasonally Adjusted)
 NEW YORK STATE
 JANUARY 1990 – OCTOBER 2007

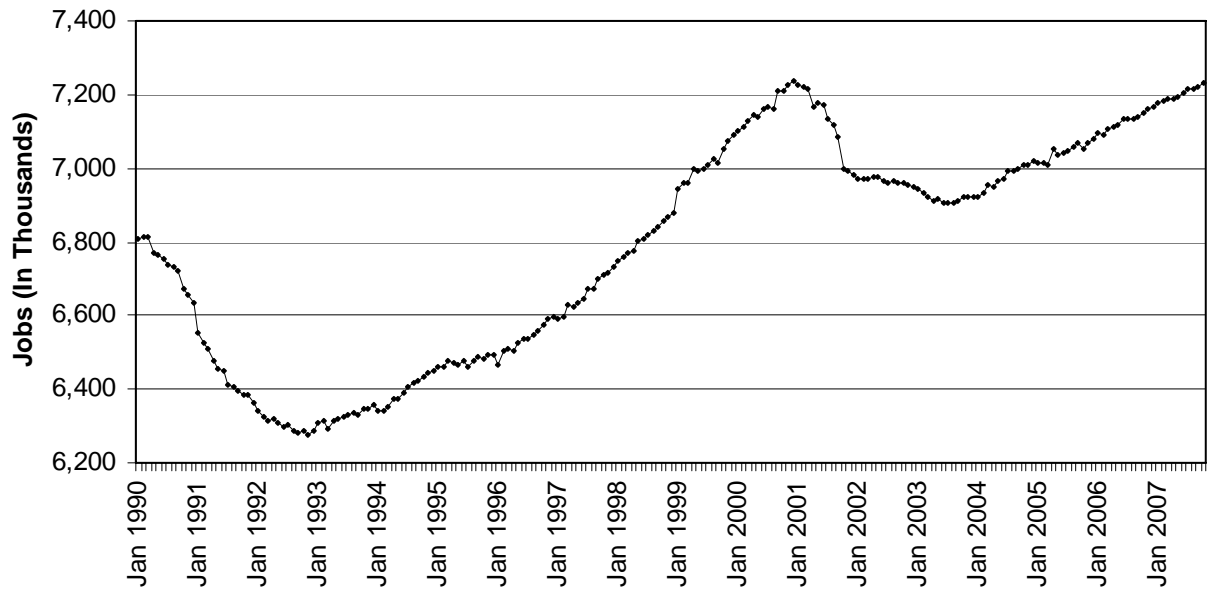
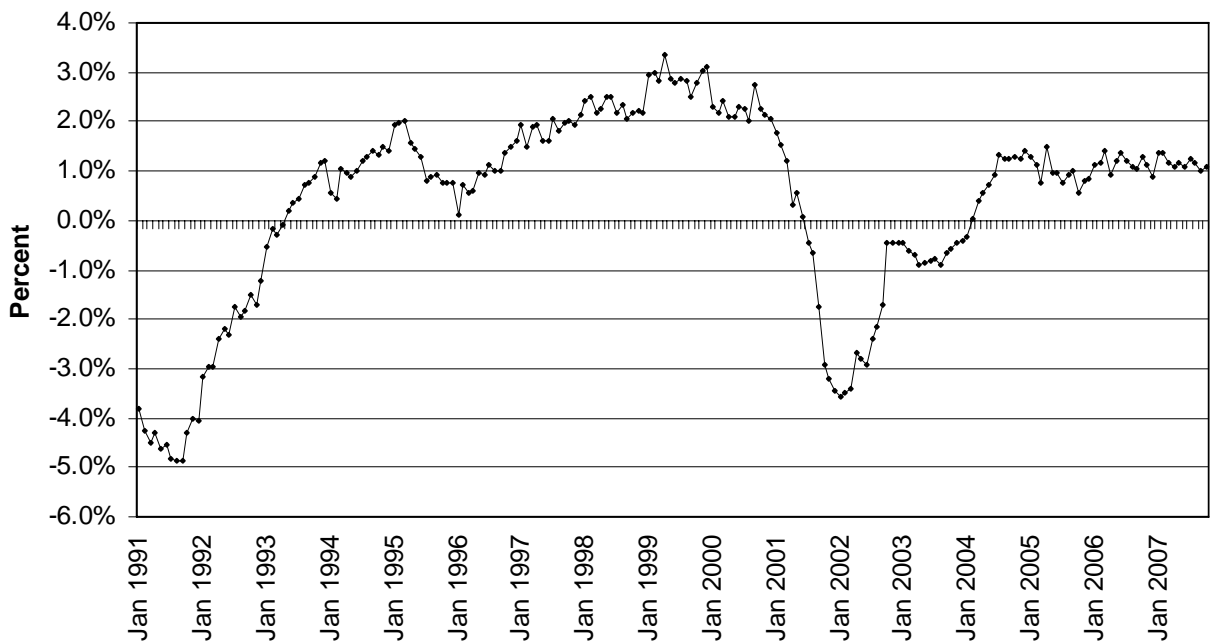


CHART 2: OVER-THE-YEAR CHANGE IN PRIVATE SECTOR JOBS
 (Not Seasonally Adjusted)
 NEW YORK STATE
 JANUARY 1991 – OCTOBER 2007



Note: The current private sector jobs series begins in January 1990; thus, over-the-year changes in the series start in January 1991.

**CHART 3: OVER-THE-YEAR CHANGE IN NONFARM JOBS BY SUPERSECTOR
NEW YORK STATE**

(Not Seasonally Adjusted)

OCTOBER 2004 - OCTOBER 2005, OCTOBER 2005 - OCTOBER 2006, OCTOBER 2006 - OCTOBER 2007

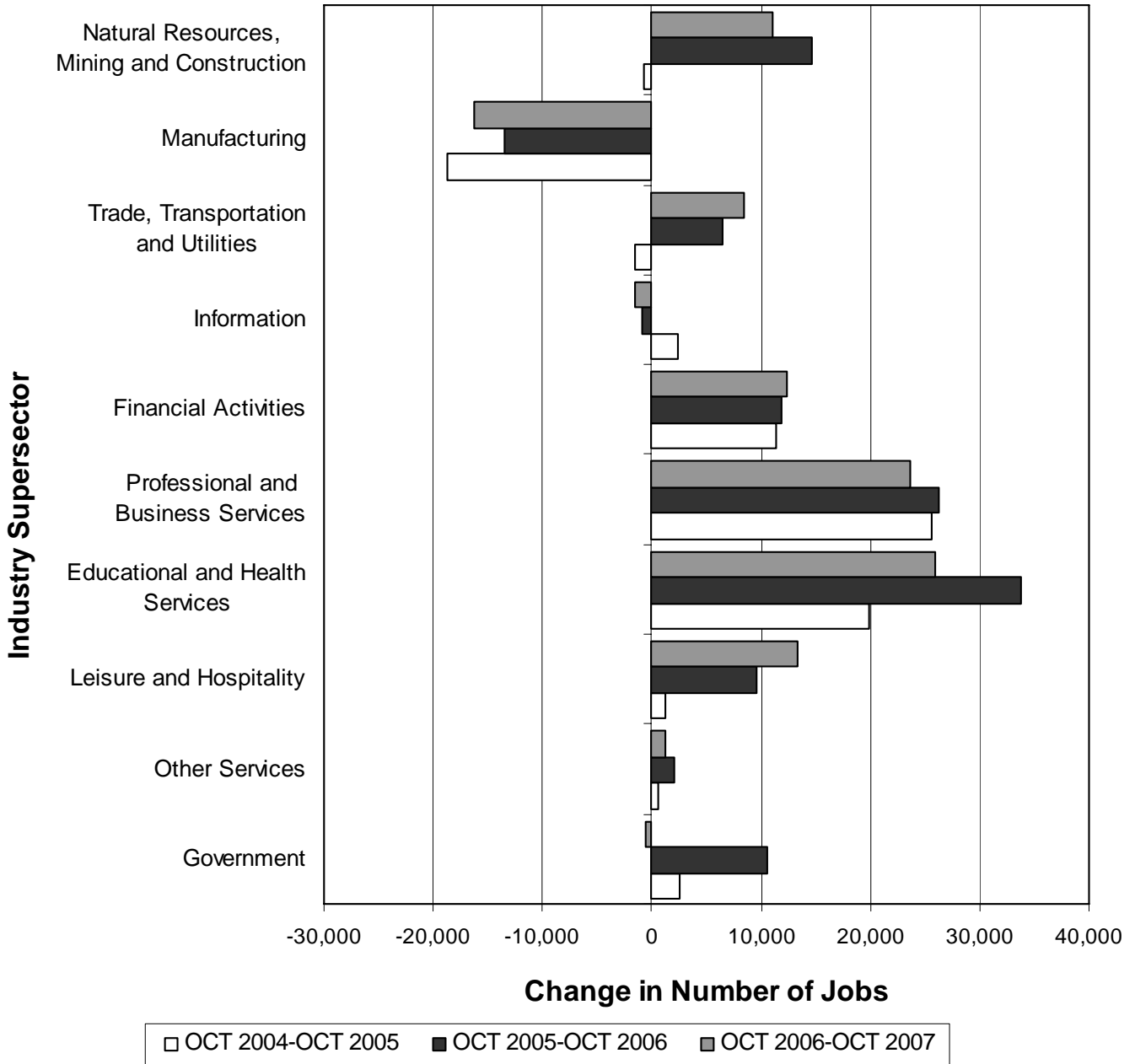
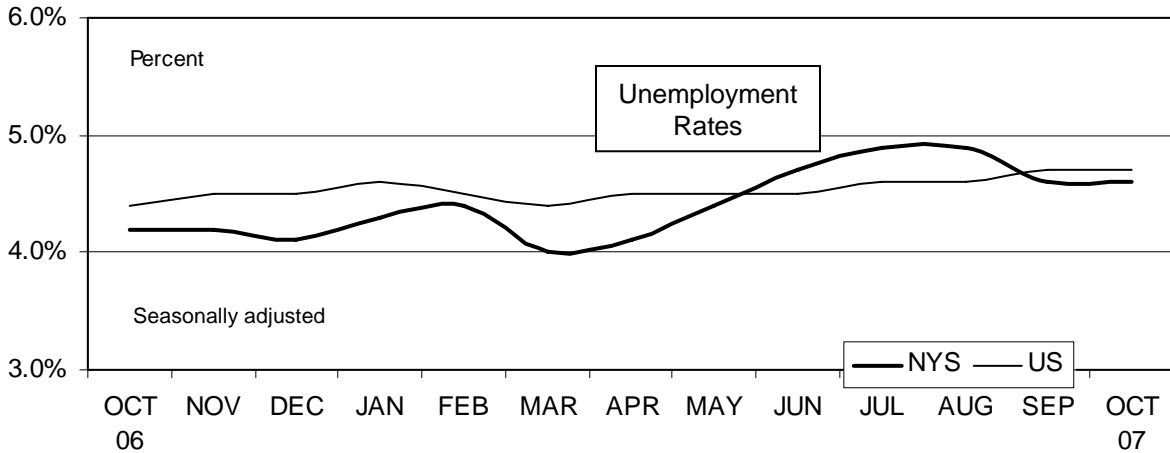


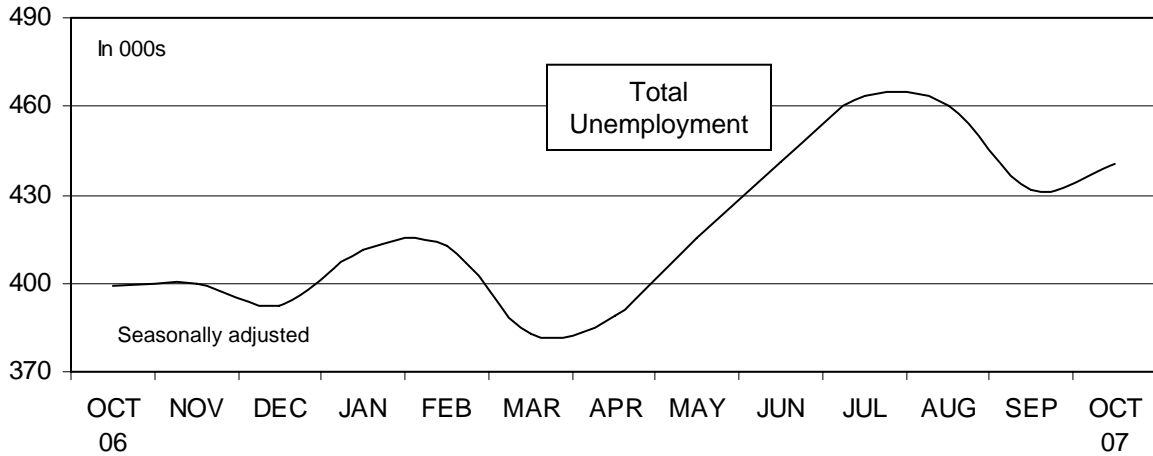
CHART 4: LABOR FORCE STATISTICS IN OCTOBER 2007

In October...

...NYS unemployment rate same



...NYS total unemployment increased



...NYS labor force participation decreased

