

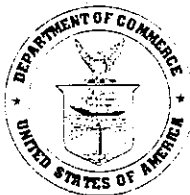
OBSTRUCTION DATA SHEET

ODS 634
WALKER FIELD
GRAND JUNCTION, COLORADO

DIGITIZED FROM

OC 634
SURVEYED JUNE 1993
9TH EDITION

HORIZONTAL DATUM NAD 83
VERTICAL DATUM NGVD 29



PREPARED AND DISTRIBUTED BY
THE NATIONAL OCEAN SERVICE
U.S. DEPARTMENT OF COMMERCE
FOR THE FEDERAL AVIATION ADMINISTRATION

ATTENTION

See SPECIAL NOTICES in "Dates of Latest Editions, Airport Obstruction Charts - Obstruction Data Sheets," for possible corrections. National Oceanic and Atmospheric Administration (NOAA) publications are available through NOAA Distribution Branch (N/CG33), National Ocean Service, Riverdale, MD 20737. Telephone: 301-436-6990

OBSTRUCTION DATA SHEET

The Obstruction Data Sheet (ODS) provides digital obstruction and runway data for use in aircraft arrival and departure planning. This information has been obtained using field survey and photogrammetric methods by the Photogrammetry Branch of the National Ocean Service in accordance with Federal Aviation Regulations Part 77 (FAR-77), "Objects Affecting Navigable Airspace" and FAA No. 405, "Specifications - Airport Obstruction Chart and Related Products."

The ODS is a derivative of the Airport Obstruction Chart (OC). The source OC is indicated on the ODS cover. All objects, both obstructing and nonobstructing, that carry an elevation on the OC are listed in the ODS. The ODS and the OC depict a representation of objects that existed at the time of the OC field survey.

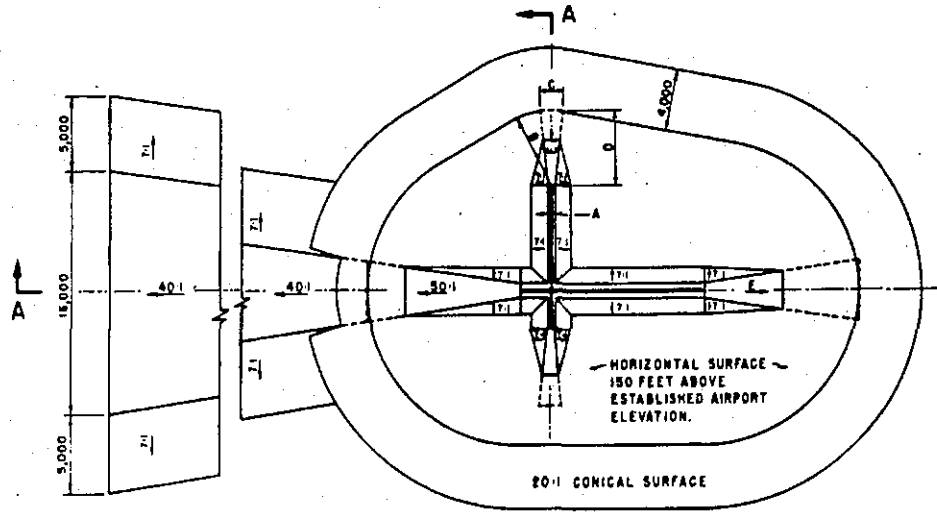
ODS information is arranged as follows:

1. Objects located in an FAR-77 approach or primary and listed with the associated runway (reference runway).
2. All objects not included in "1" above are listed with the Airport Reference Point (ARP).
3. Runway configuration and runway lengths, widths, and elevations are presented on the ODS last page.

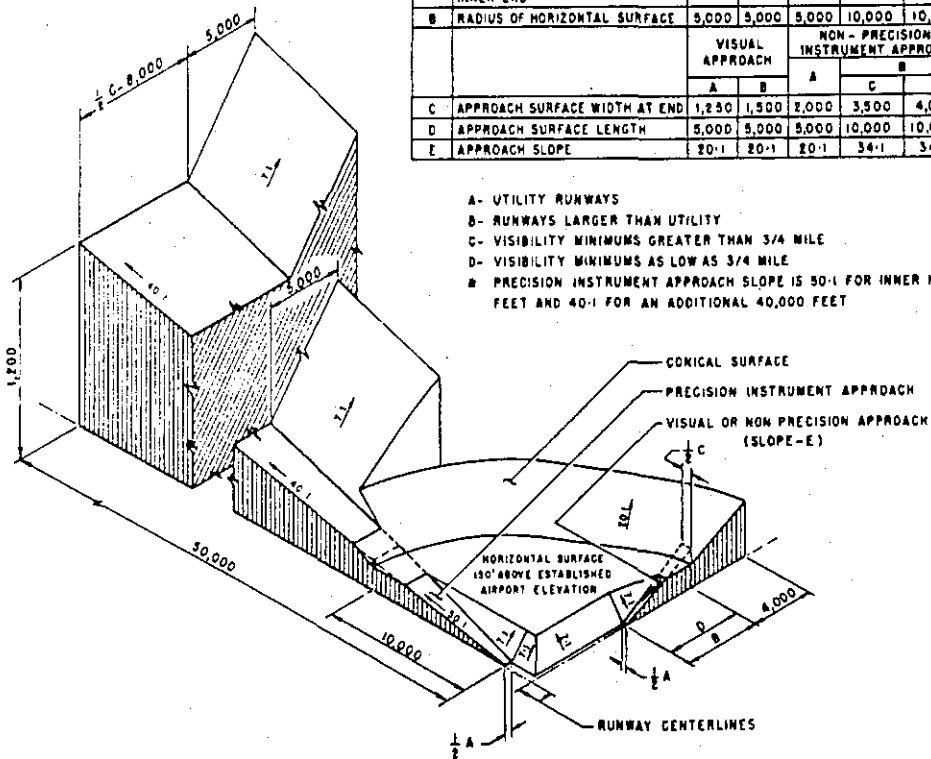
The FAR-77 imaginary approach surfaces for which the obstruction surveys were performed are coded in the ODS as follows:

A(V) Utility runway - visual approach only
A(NP) Utility runway - nonprecision instrument approach
B(V) Nonutility runway - visual approach only
C Nonutility runway - nonprecision instrument
approach with visibility minimums greater than
3/4 mile
D Nonutility runway- nonprecision instrument approach
with visibility minimums as low as 3/4 mile
PIR Precision instrument runway
SUPLC Supplemental C underlying a B(V)

FAR-77 imaginary surface dimensions are defined on page 2 of this report.



| DIM | ITEM | DIMENSIONAL STANDARDS (FEET) | | | | | |
|-----|------------------------------------------------------------------|------------------------------|-------|-----------------------------------|--------|--------|-------------------------------|
| | | VISUAL RUNWAY | | NON-PRECISION INSTRUMENT RUNWAY | | | PRECISION INSTRUMENT RUNWAY |
| | | A | B | A | B | | |
| A | WIDTH OF PRIMARY SURFACE AND APPROACH SURFACE WIDTH AT INNER END | 250 | 500 | 500 | 500 | 1,000 | 1,000 |
| B | RADIUS OF HORIZONTAL SURFACE | 5,000 | 5,000 | 5,000 | 10,000 | 10,000 | 10,000 |
| | | VISUAL APPROACH | | NON-PRECISION INSTRUMENT APPROACH | | | PRECISION INSTRUMENT APPROACH |
| | | A | B | A | B | | |
| C | APPROACH SURFACE WIDTH AT END | 1,250 | 1,500 | 2,000 | 3,500 | 4,000 | 16,000 |
| D | APPROACH SURFACE LENGTH | 5,000 | 5,000 | 5,000 | 10,000 | 10,000 | * |
| E | APPROACH SLOPE | 20:1 | 20:1 | 20:1 | 34:1 | 34:1 | * |



- A- UTILITY RUNWAYS
- B- RUNWAYS LARGER THAN UTILITY
- C- VISIBILITY MINIMUMS GREATER THAN 3/4 MILE
- D- VISIBILITY MINIMUMS AS LOW AS 3/4 MILE
- * PRECISION INSTRUMENT APPROACH SLOPE IS 50:1 FOR INNER 10,000 FEET AND 40:1 FOR AN ADDITIONAL 40,000 FEET

ISOMETRIC VIEW OF SECTION A-A

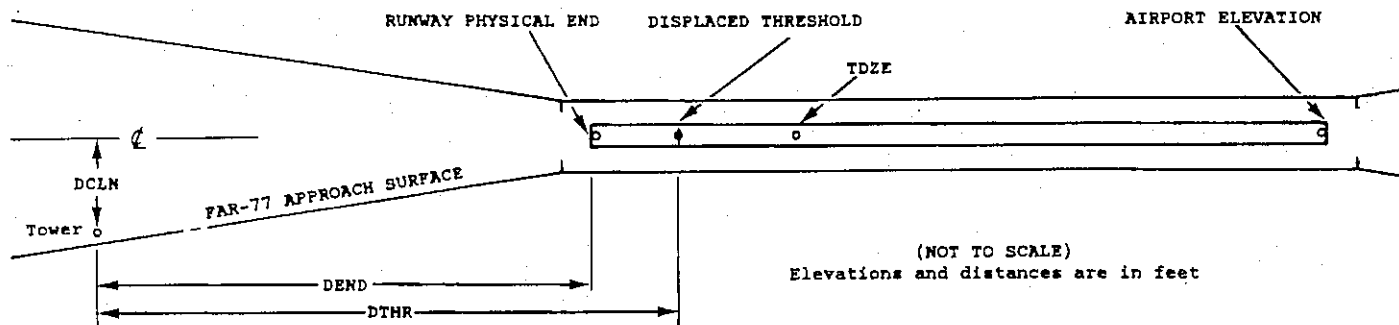
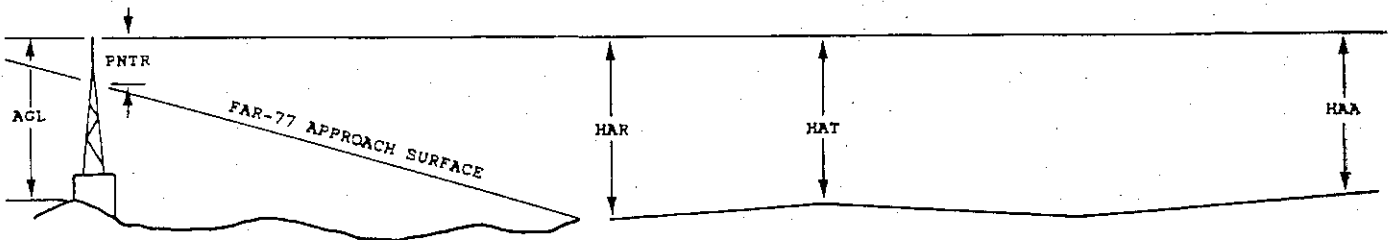
FAR-77 CIVIL AIRPORT
IMAGINARY SURFACES

ANNOTATION OF ODS DATA FORMAT

OC XXXX

AIRPORT ELEVATION XXXX

| 1 | 2 | 3 | 4 | 4 | 5 | 6 | 7 | 7 | 8 | 9 | 10 | 11 | 11 | 11 | 12 | 12 | 12 | 13 |
|--------------|---|-----------|------------|------------|--------|-----------|------------|------------|-----|------|-----|-----|-----|-------|-------|------|------|------|
| X | X | XXXX/XXXX | XXXXXX.XXX | XXXXXX.XXX | XXXXXX | XXXX/XXXX | XXXXXX.XXX | XXXXXX.XXX | A | ELEV | AGL | HAR | HAT | HAA | DEND | DTHR | DCLN | PNTR |
| XXXXXXXXXXXX | | | XXXXXX.XXX | XXXXXX.XXX | XX | XXXX | XXXX | XXX | XXX | XXXX | XXX | XXX | XXX | XXXXX | XXXXX | XXXX | XXXX | XXXX |
| XXXXXXXXXXXX | | | XXXXXX.XXX | XXXXXX.XXX | XX | XXXX | XXXX | XXX | XXX | XXXX | XXX | XXX | XXX | XXXXX | XXXXX | XXXX | XXXX | XXXX |



(NOT TO SCALE)
Elevations and distances are in feet

000634

AIRPORT ELEVATION 4858

11 PIR 4820/4833 390805.894 -1083239.622 1251035.

| OBJECT | LAT | LONG | A | EL | AGL | HAR | HAT | HAA | DEND | DTHR | DCLN | PNTR |
|---------------|-----------|-------------|----|------|-----|-----|-----|-----|--------|------|------|------|
| GROUND | 390707.67 | -1083048.29 | 1A | 4858 | | 38 | 25 | 0 | -10564 | | 241L | 0 |
| ANT ON COLUMN | 390802.39 | -1083224.08 | 1A | 4845 | | 25 | 12 | -13 | -1205 | | 416L | 20 |
| ROD ON OL GS | 390804.02 | -1083227.41 | 1A | 4863 | | 43 | 30 | 5 | -896 | | 399L | 40 |

29 SUPLC 4858/4858 390706.100 -1083050.739 3051144.

| OBJECT | LAT | LONG | A | EL | AGL | HAR | HAT | HAA | DEND | DTHR | DCLN | PNTR |
|---------------|-----------|-------------|----|------|-----|-----|-----|-----|-------|------|------|------|
| ROD ON OL GS | 390804.02 | -1083227.41 | 1A | 4863 | | 5 | 5 | 5 | -9602 | | 399R | 40 |
| ANT ON COLUMN | 390802.39 | -1083224.08 | 1A | 4845 | | -13 | -13 | -13 | -9293 | | 416R | 20 |
| GROUND | 390707.67 | -1083048.29 | 1A | 4858 | | 0 | 0 | 0 | 66 | | 241R | 0 |
| OL ON DME | 390706.61 | -1083045.80 | 1A | 4880 | | 22 | 22 | 22 | 288 | | 266R | 20 |
| OL ON LOC | 390704.34 | -1083047.54 | 1A | 4860 | | 2 | 2 | 2 | 309 | | 0R | -1 |

4 AV 4784/4825 390635.646 -1083147.585 542620.

| OBJECT | LAT | LONG | A | EL | AGL | HAR | HAT | HAA | DEND | DTHR | DCLN | PNTR |
|--------|-----------|-------------|----|------|-----|-----|-----|-----|-------|------|------|------|
| GROUND | 390707.67 | -1083048.29 | 1A | 4858 | | 74 | 33 | 0 | -5686 | | 82R | 1 |
| TREE | 390623.04 | -1083205.78 | 1A | 4794 | | 10 | -31 | -64 | 1908 | | 204R | -75 |

22 AV 4857/4857 390707.257 -1083050.816 2342656.

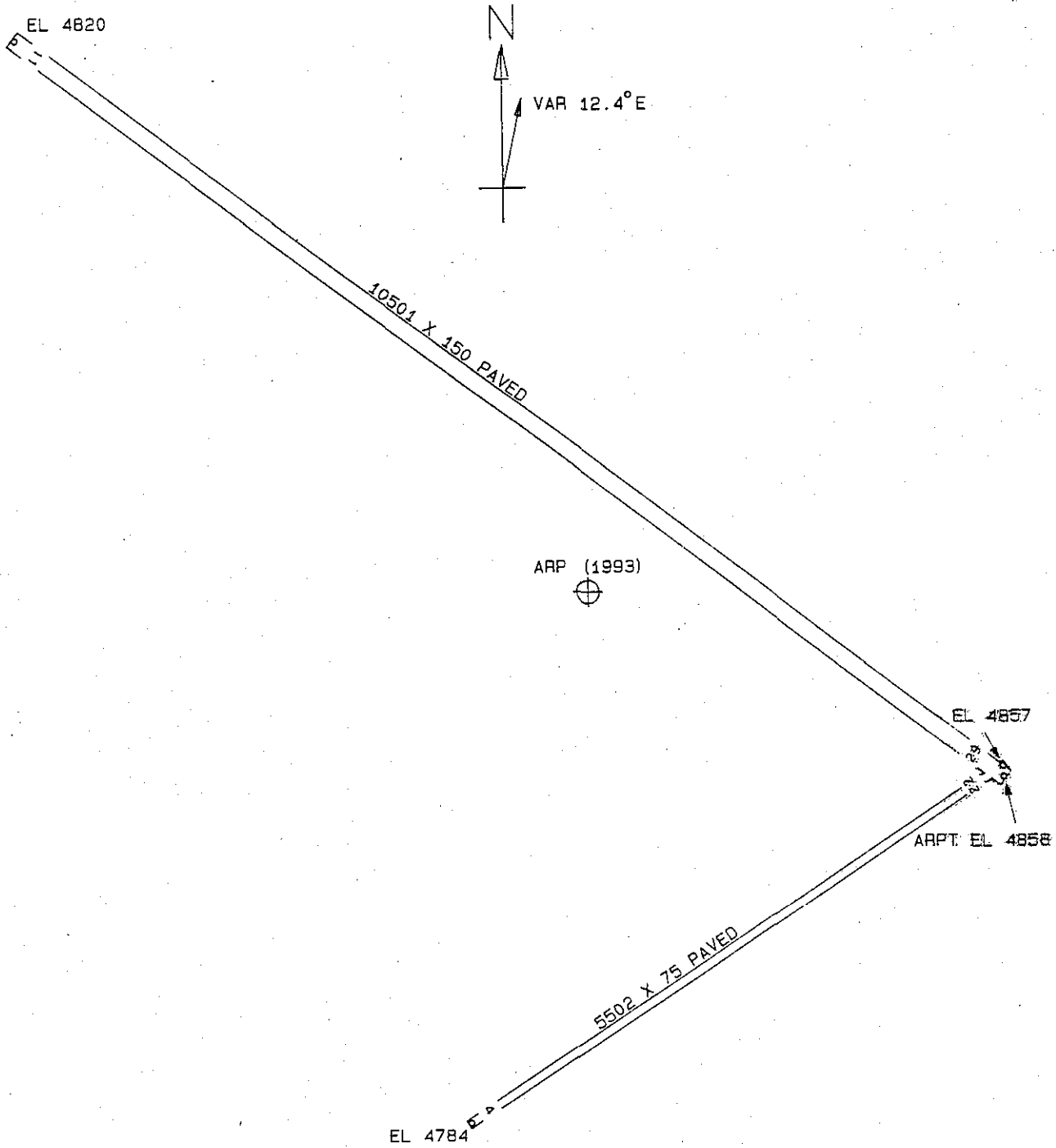
| OBJECT | LAT | LONG | A | EL | AGL | HAR | HAT | HAA | DEND | DTHR | DCLN | PNTR |
|--------|-----------|-------------|----|------|-----|-----|-----|-----|------|------|------|------|
| GROUND | 390707.67 | -1083048.29 | 1A | 4858 | | 1 | 1 | 0 | 186 | | 82L | 1 |
| FENCE | 390714.79 | -1083039.38 | 1A | 4875 | | 18 | 18 | 17 | 1176 | | 96R | -31 |

OC0634

AIRPORT ELEVATION 4858

ARP 390720.685 -1083136.245

| OBJECT | LAT | LONG | A | EL | AGL | HAA | MAG | BEARING | DISTANCE |
|----------------------|-----------|-------------|----|------|-----|-----|-----|---------|----------|
| LIGHT | 390720.51 | -1083134.46 | 1A | 4894 | | 36 | | 8438 | 142 |
| LIGHT | 390720.01 | -1083139.43 | 1A | 4894 | | 36 | | 24221 | 260 |
| ANT AND APBN ON ATCT | 390717.34 | -1083129.62 | 1A | 4942 | | 84 | | 11033 | 622 |
| LIGHT | 390724.77 | -1083148.35 | 1A | 4895 | | 37 | | 28100 | 1039 |
| FENCE | 390734.10 | -1083125.25 | 1A | 4886 | | 28 | | 2010 | 1610 |
| HANGAR | 390730.23 | -1083155.18 | 1A | 4879 | | 21 | | 29030 | 1777 |
| FENCE | 390745.68 | -1083146.20 | 1A | 4872 | | 14 | | 33022 | 2648 |
| OL ANT | 390723.34 | -1083100.67 | 1A | 4921 | | 63 | | 7206 | 2816 |
| OL AMOM | 390705.57 | -1083103.96 | 1A | 4877 | | 19 | | 10836 | 2969 |
| OL ON WSK | 390705.76 | -1083101.56 | 1A | 4870 | | 12 | | 10630 | 3123 |
| LIGHT | 390743.43 | -1083218.67 | 1A | 4848 | | -10 | | 29208 | 4058 |
| POLE | 390807.20 | -1083114.82 | 1A | 5057 | | 199 | | 719 | 4999 |
| POLE | 390807.23 | -1083045.86 | 1A | 5028 | | 170 | | 2743 | 6159 |
| GROUND | 390821.65 | -1083057.50 | 1A | 5028 | | 170 | | 1355 | 6882 |
| POLE | 390819.75 | -1083226.90 | 1A | 4925 | | 67 | | 31351 | 7186 |
| GROUND | 390842.81 | -1083117.13 | 1A | 5038 | | 180 | | 35752 | 8444 |
| POLE | 390807.32 | -1083005.75 | 1A | 5036 | | 178 | | 4406 | 8550 |
| GROUND | 390730.38 | -1082936.28 | 1A | 5021 | | 163 | | 7139 | 9505 |
| GROUND | 390846.95 | -1083032.77 | 1A | 5047 | | 189 | | 1724 | 10059 |
| POLE | 390757.59 | -1082933.07 | 1A | 5044 | | 186 | | 5633 | 10399 |
| GROUND | 390859.45 | -1083054.80 | 1A | 5118 | | 260 | | 541 | 10512 |
| GROUND | 390826.29 | -1082951.88 | 1A | 5043 | | 185 | | 3840 | 10568 |
| GROUND | 390748.93 | -1082927.11 | 1A | 5024 | | 166 | | 6154 | 10569 |
| POLE | 390755.14 | -1082924.71 | 1A | 5070 | | 212 | | 5900 | 10935 |
| GROUND | 390901.98 | -1083033.76 | 1A | 5137 | | 279 | | 1315 | 11369 |
| GROUND | 390819.17 | -1082930.33 | 1A | 5031 | | 173 | | 4646 | 11552 |
| GROUND | 390822.58 | -1082920.20 | 1A | 5090 | | 232 | | 4717 | 12415 |
| GROUND | 390839.73 | -1082932.17 | 1A | 5084 | | 226 | | 3818 | 12631 |
| VENT ON TANK | 390854.21 | -1083324.35 | 1A | 4936 | | 78 | | 30536 | 12731 |
| GROUND | 390918.19 | -1083035.19 | 1A | 5200 | | 342 | | 937 | 12825 |
| GROUND | 390929.79 | -1083139.97 | 1A | 5043 | | 185 | | 34618 | 13065 |
| GROUND | 390930.38 | -1083116.12 | 1A | 5080 | | 222 | | 35429 | 13216 |
| GROUND | 390947.51 | -1083039.91 | 1A | 5222 | | 364 | | 413 | 15503 |



| TOUCHDOWN ZONE | |
|-------------------|------|
| RUNWAY ELEVATION: | |
| 11 | 4833 |
| 29 | 4858 |
| 4 | 4825 |
| 22 | 4857 |

WALKER FIELD
 GRAND JUNCTION, COLORADO
 (NOT TO SCALE)
 (ELEVATIONS AND DISTANCES IN FEET)