

OE ENERGY MARKET SNAPSHOT

Mid-Atlantic States Version – August 2008 Data

- **Special Report**
- **Market Fundamentals**
- **Prices and Market Analysis**

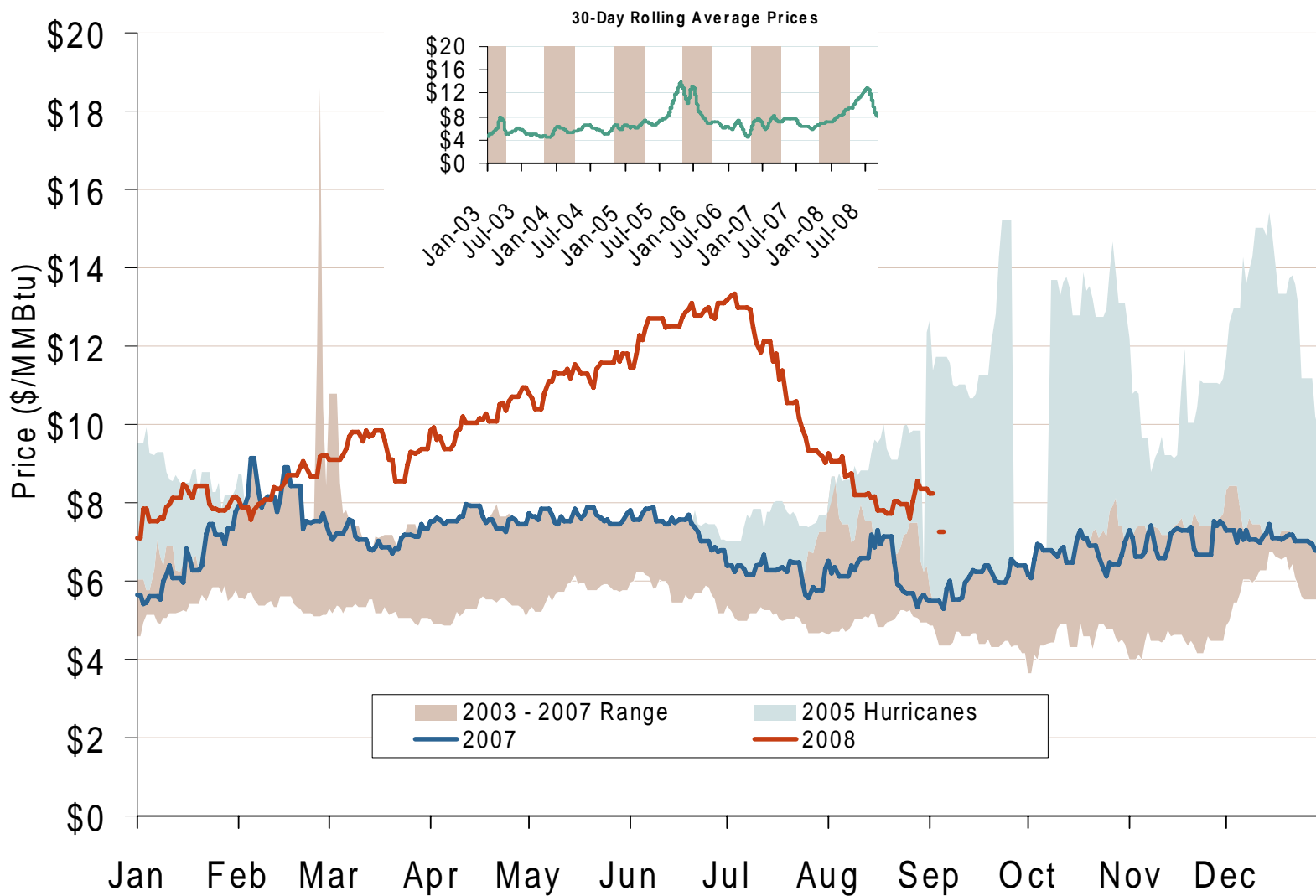
Office of Enforcement
Federal Energy Regulatory Commission
September 2008



Special Report:

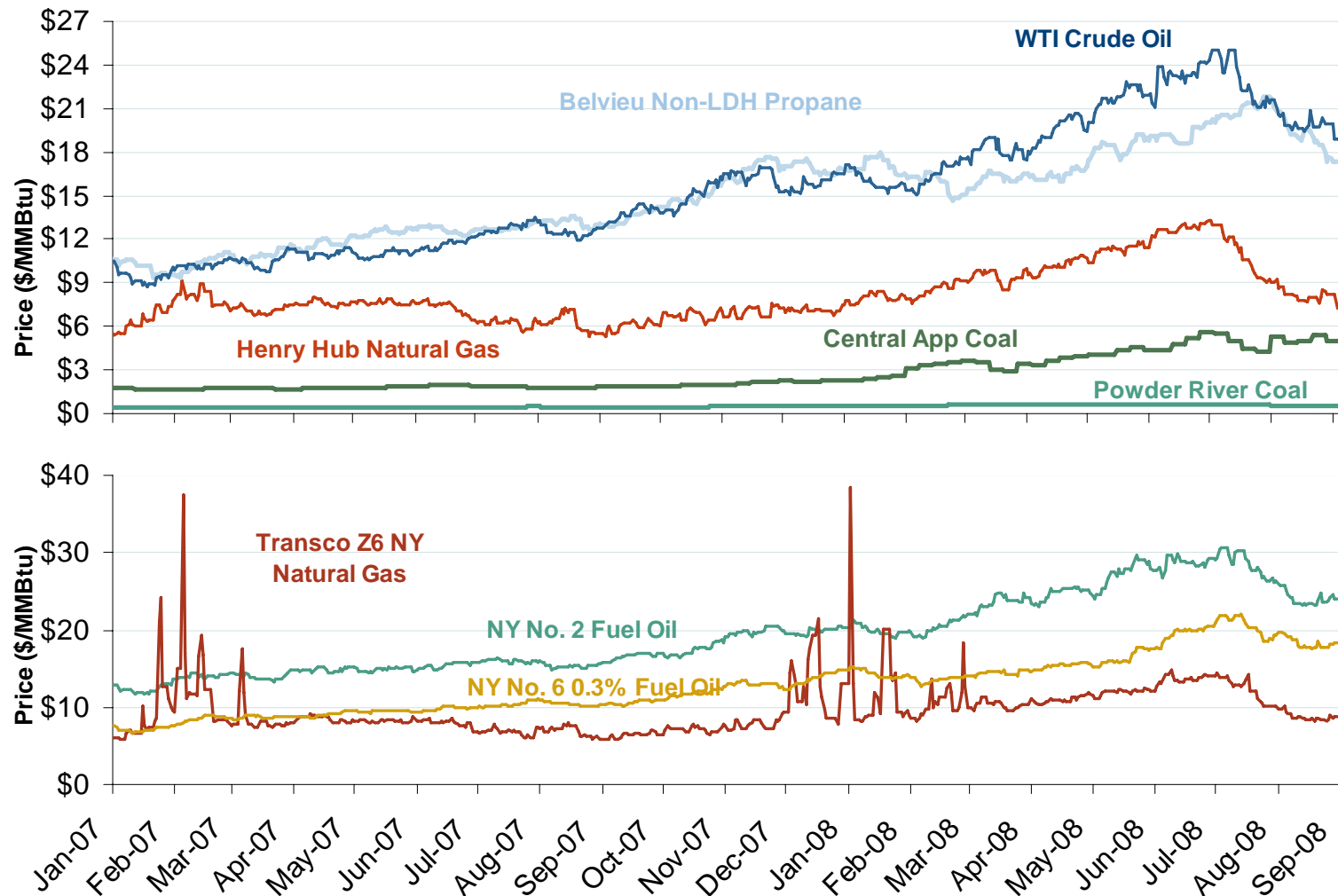
Natural Gas Price Decline II

Henry Hub Natural Gas Daily Spot Prices 2007, 2008 and 2003-2007 Year Range



Source: Derived from *Platts* data.
September 2008 Mid-Atlantic Snapshot Report

Oil, Coal, Natural Gas and Propane Daily Spot Prices

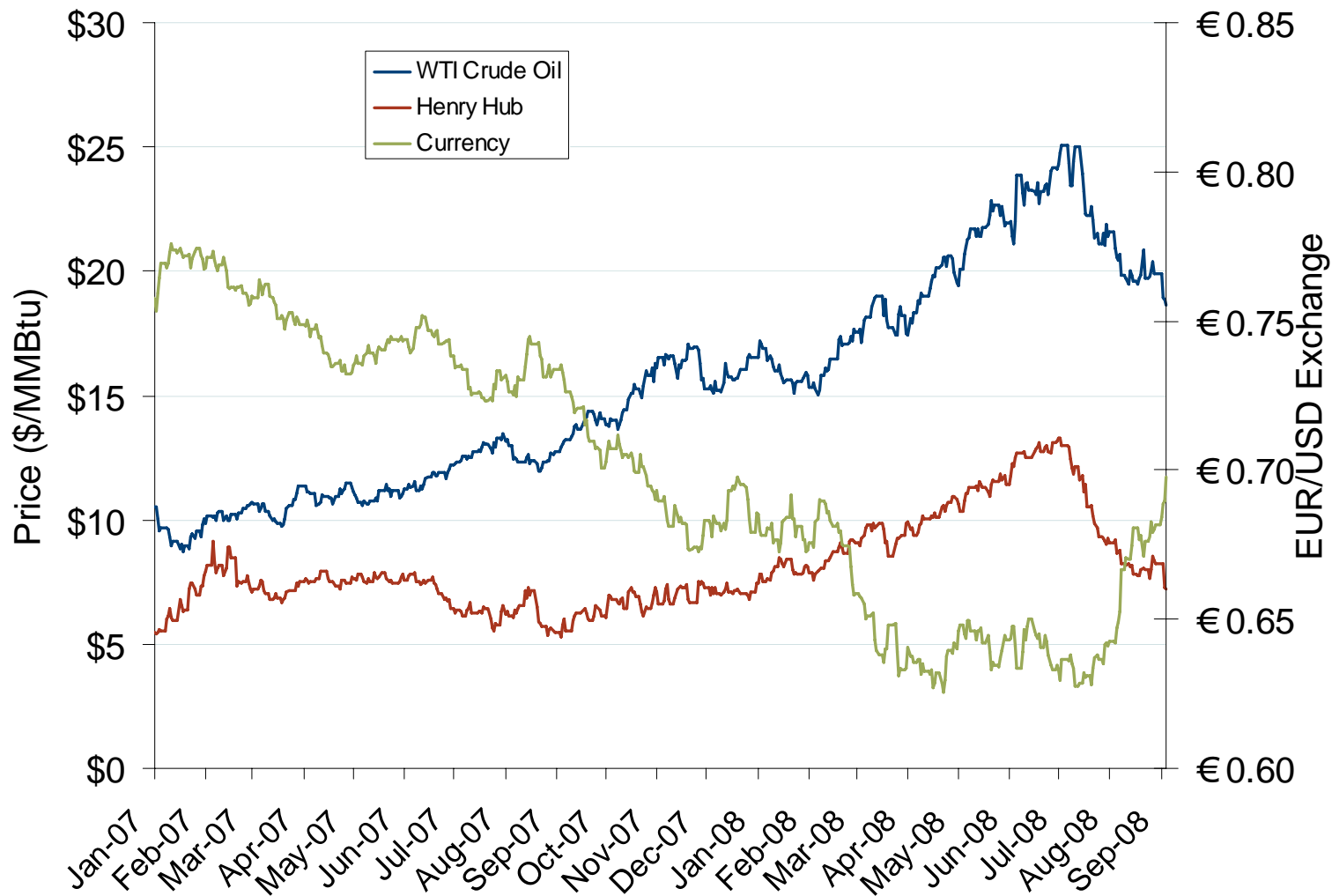


Source: Derived from ICE and Bloomberg data.

Note: Coal prices are quoted in \$/ton. Conversion factors to \$/MMBtu are based on contract specifications of 12,000 btus/pound for Central Appalachian coal and 8800 btus/pound for Powder River Basin coal.

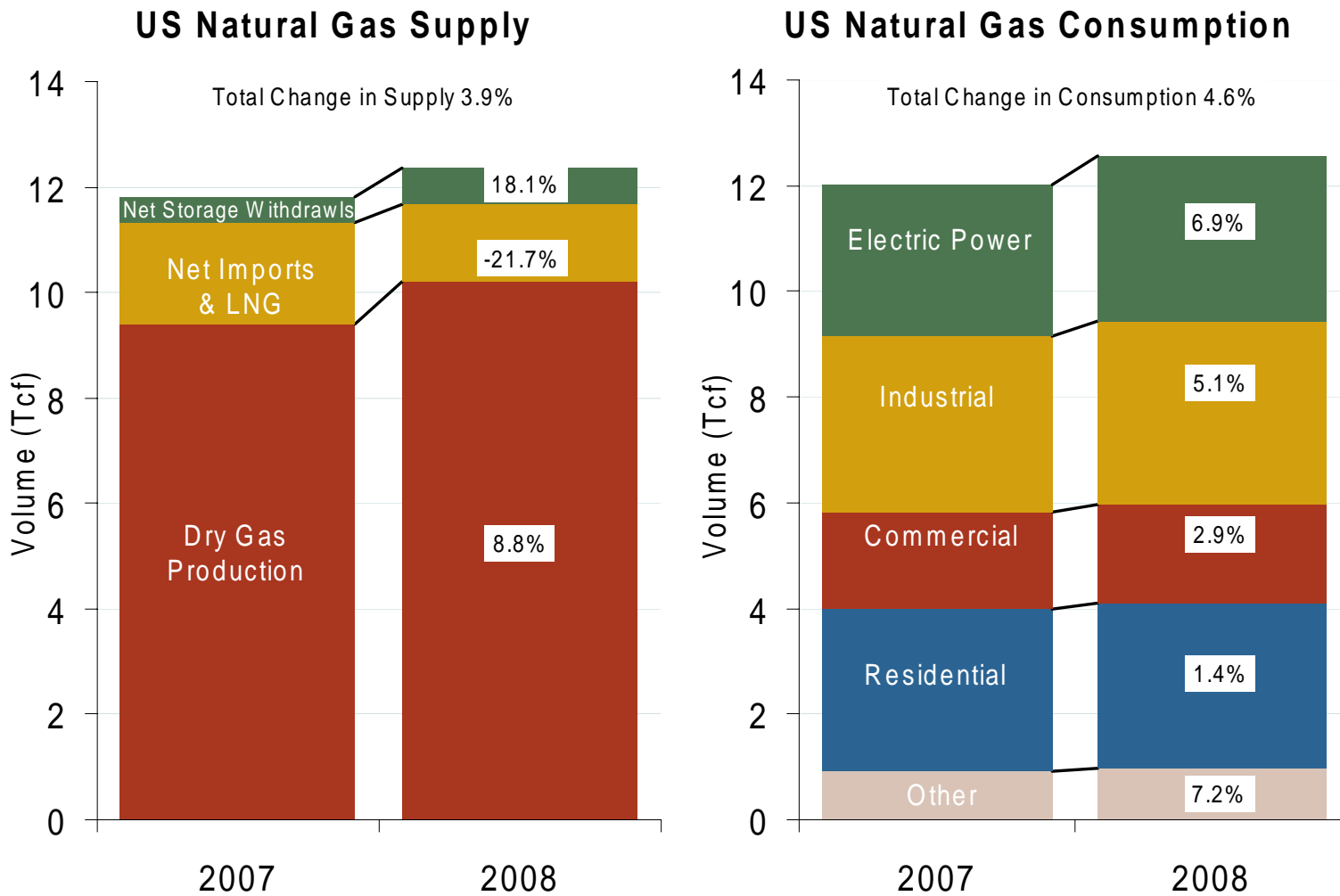
Updated September 5, 2008

Oil, Natural Gas and Currency Spot Prices



Source: Derived from *Bloomberg* data.
September 2008 Mid-Atlantic Snapshot Report

U.S. Natural Gas Supply and Consumption Jan-Jun



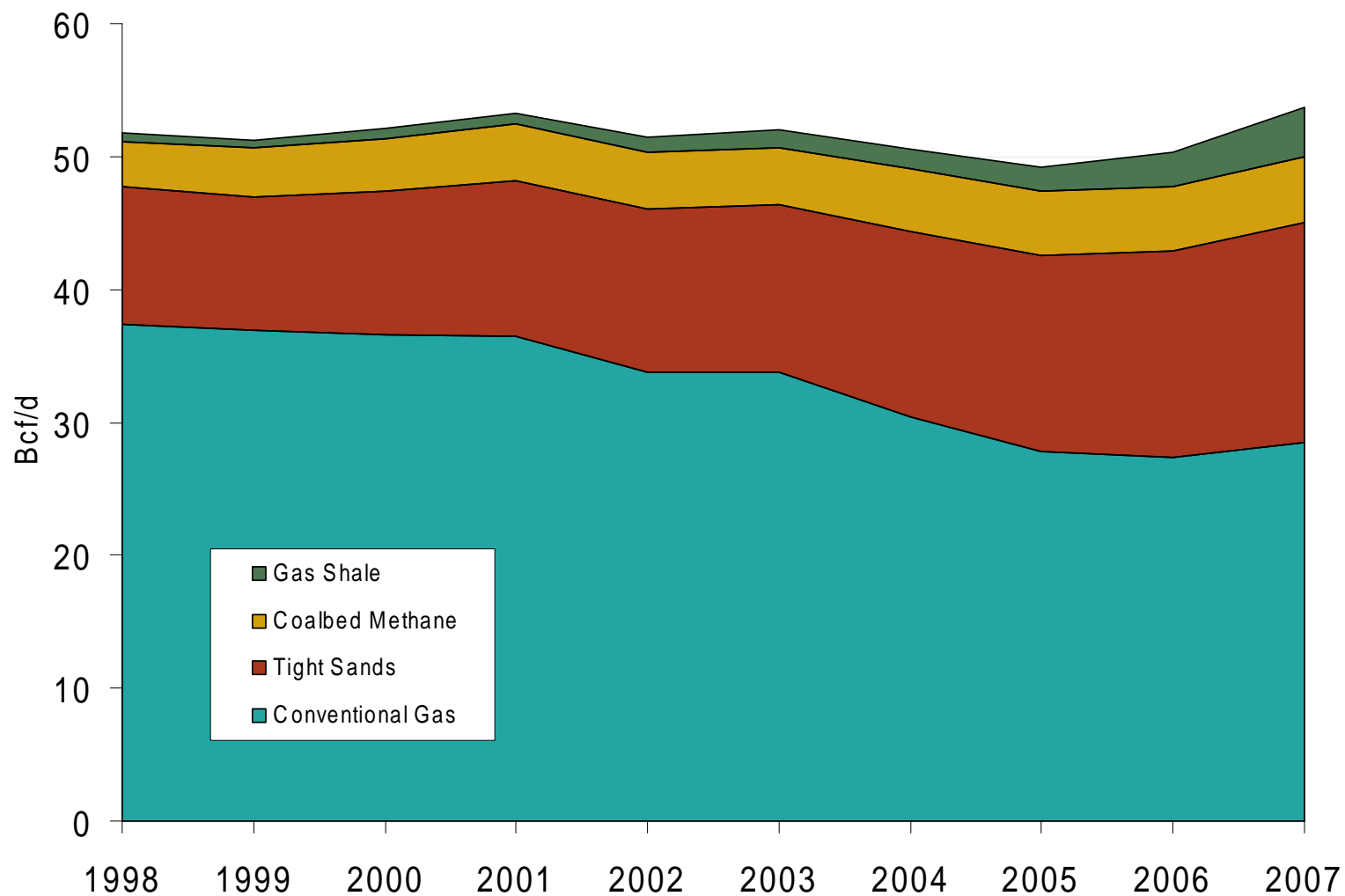
Source: EIA Natural Gas Monthly, August 2008
September 2008 Mid-Atlantic Snapshot Report

Updated September 9, 2008

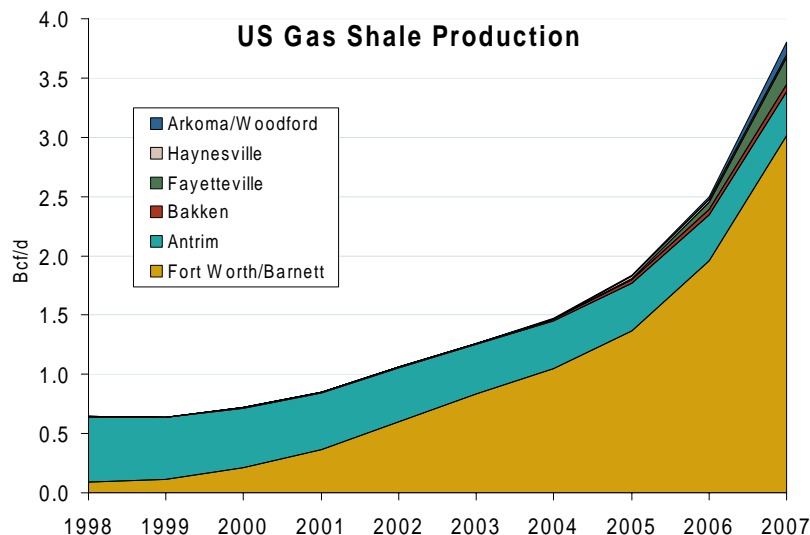
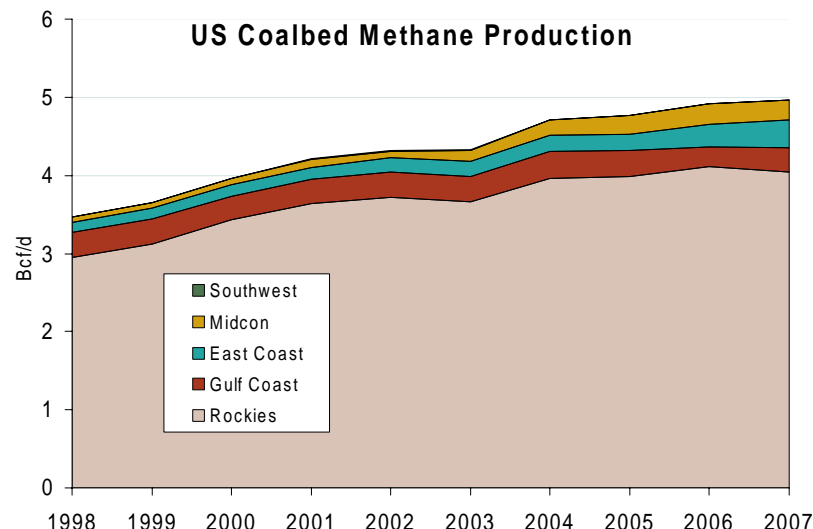
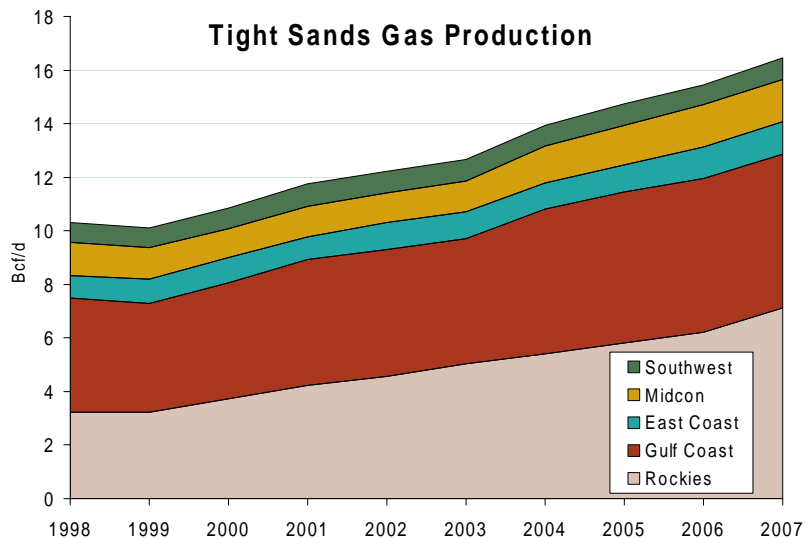
Major US Shale Basins



US Natural Gas Production

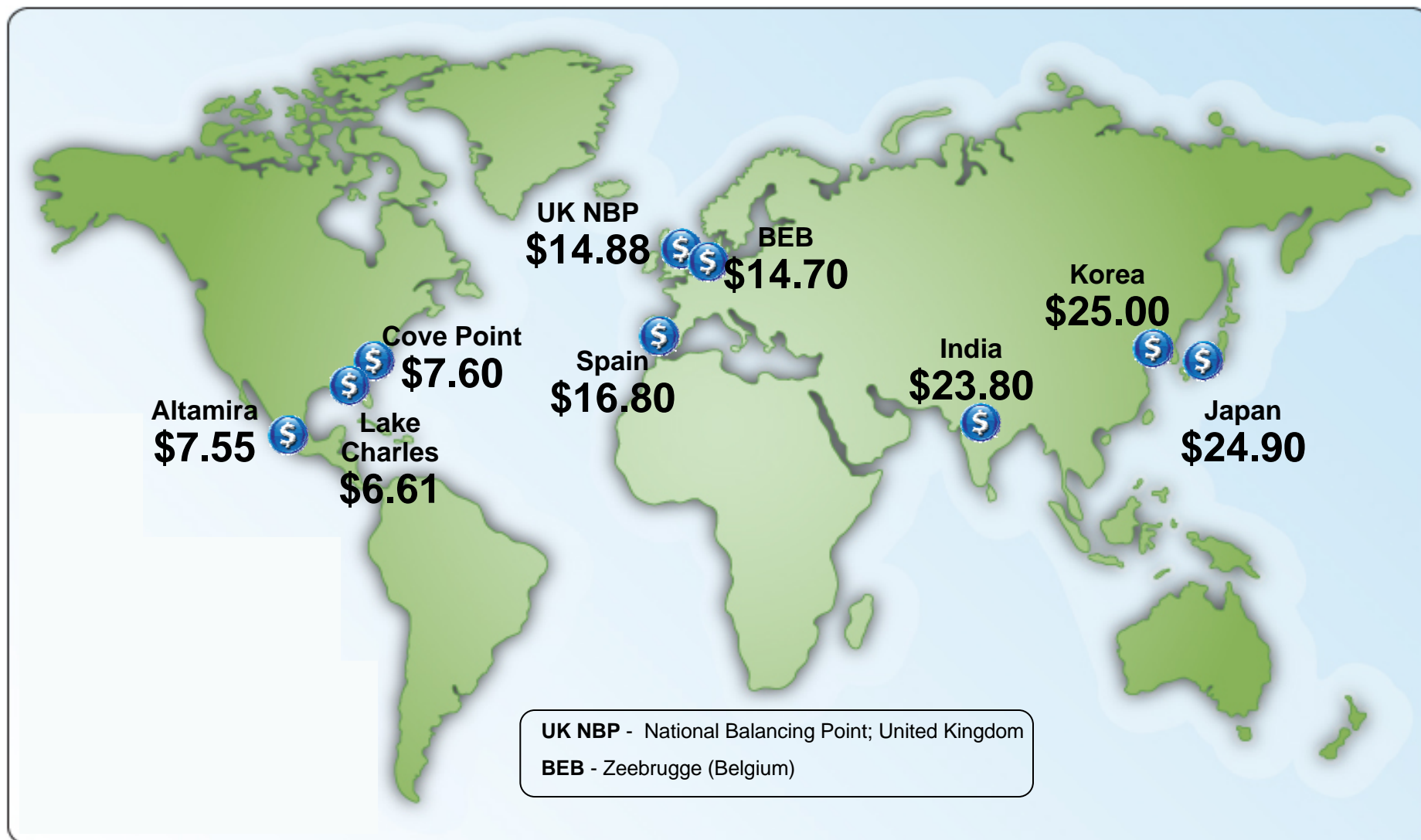


“Unconventional” Natural Gas Production



Source: Derived from EIA data.
September 2008 Mid-Atlantic Snapshot Report

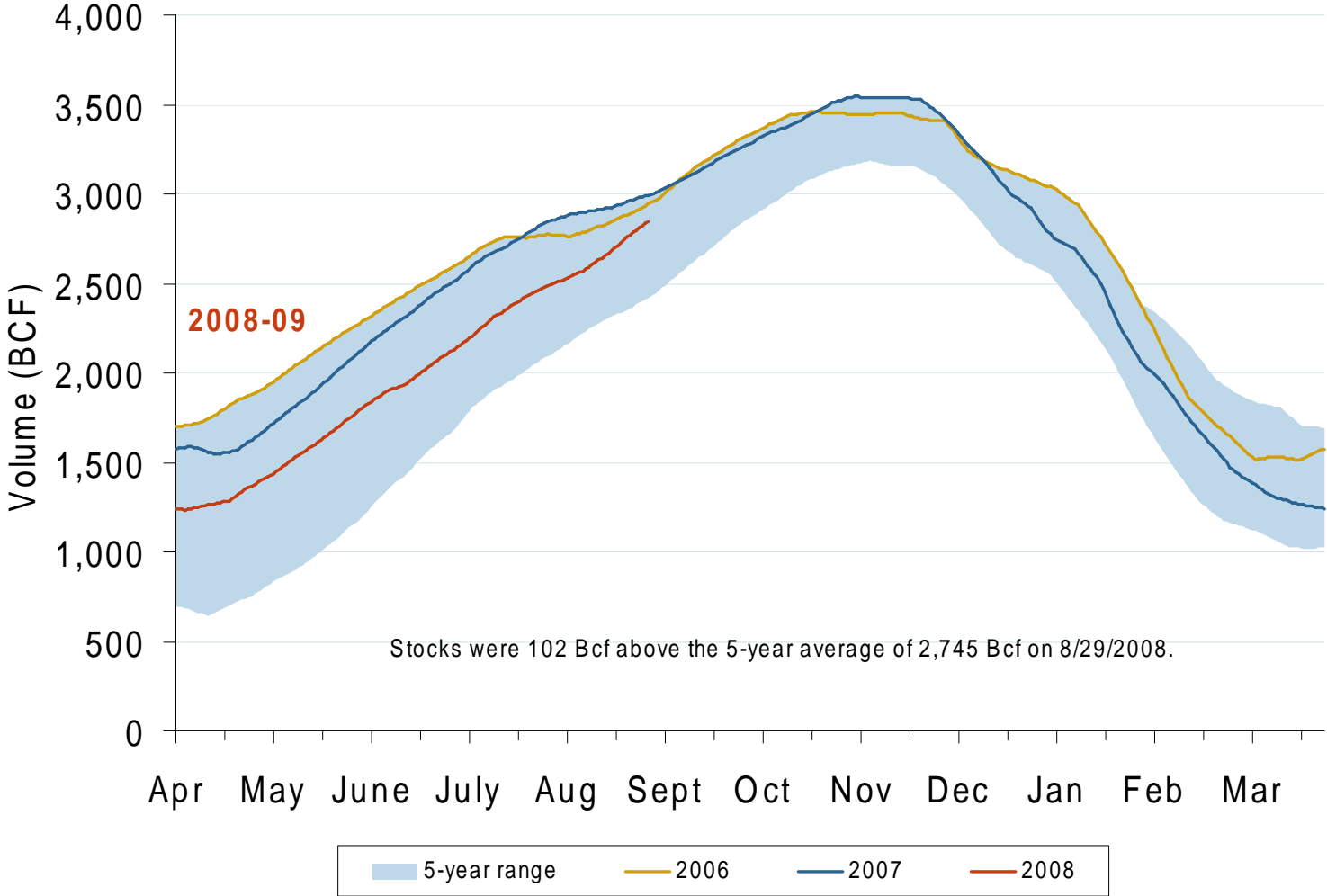
World LNG Landed Price Estimates for October 2008



Source: *Waterborne Energy, Inc.* data in \$US/MMBtu.

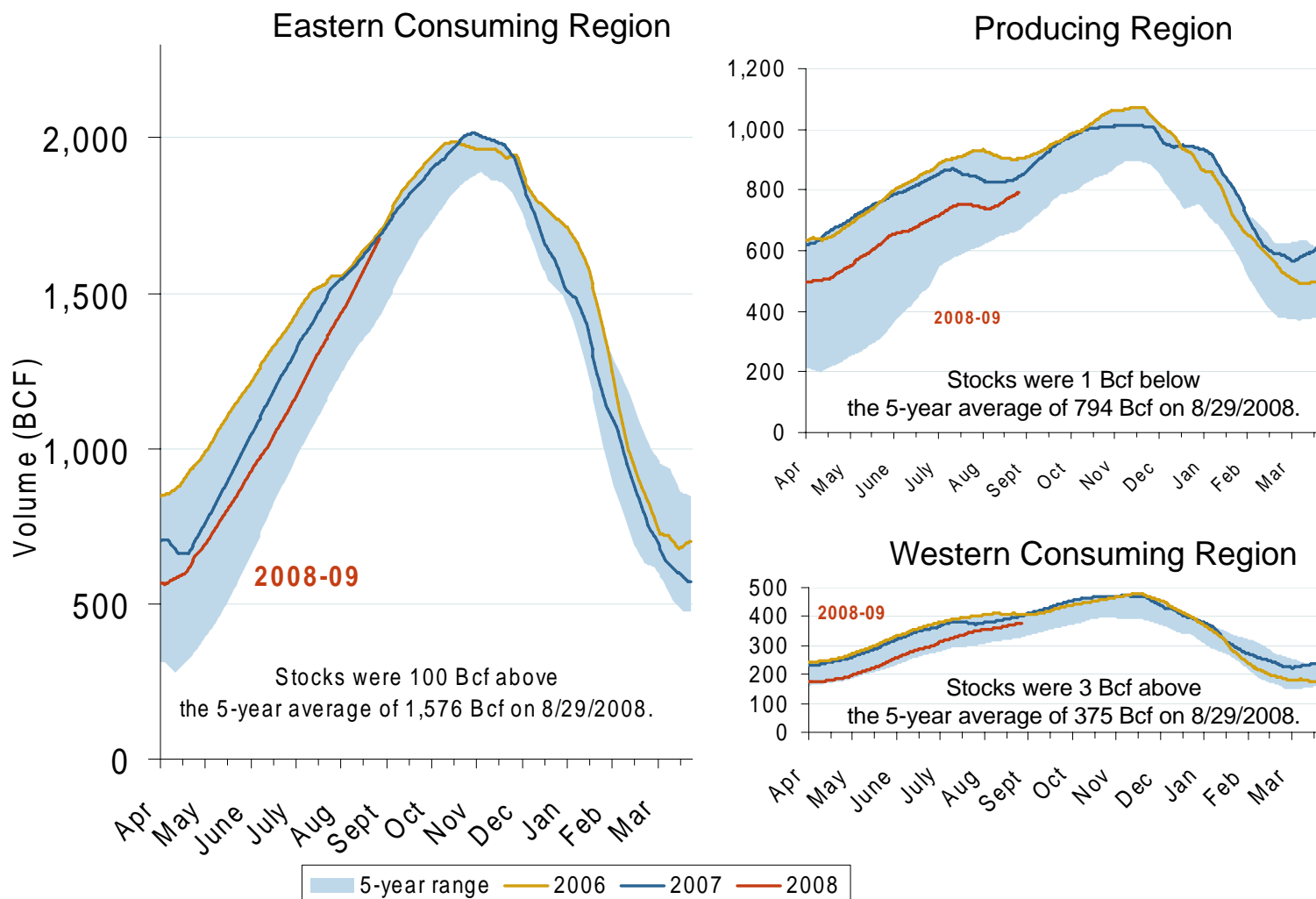
Updated September 5, 2008

Total U.S. Working Gas in Storage

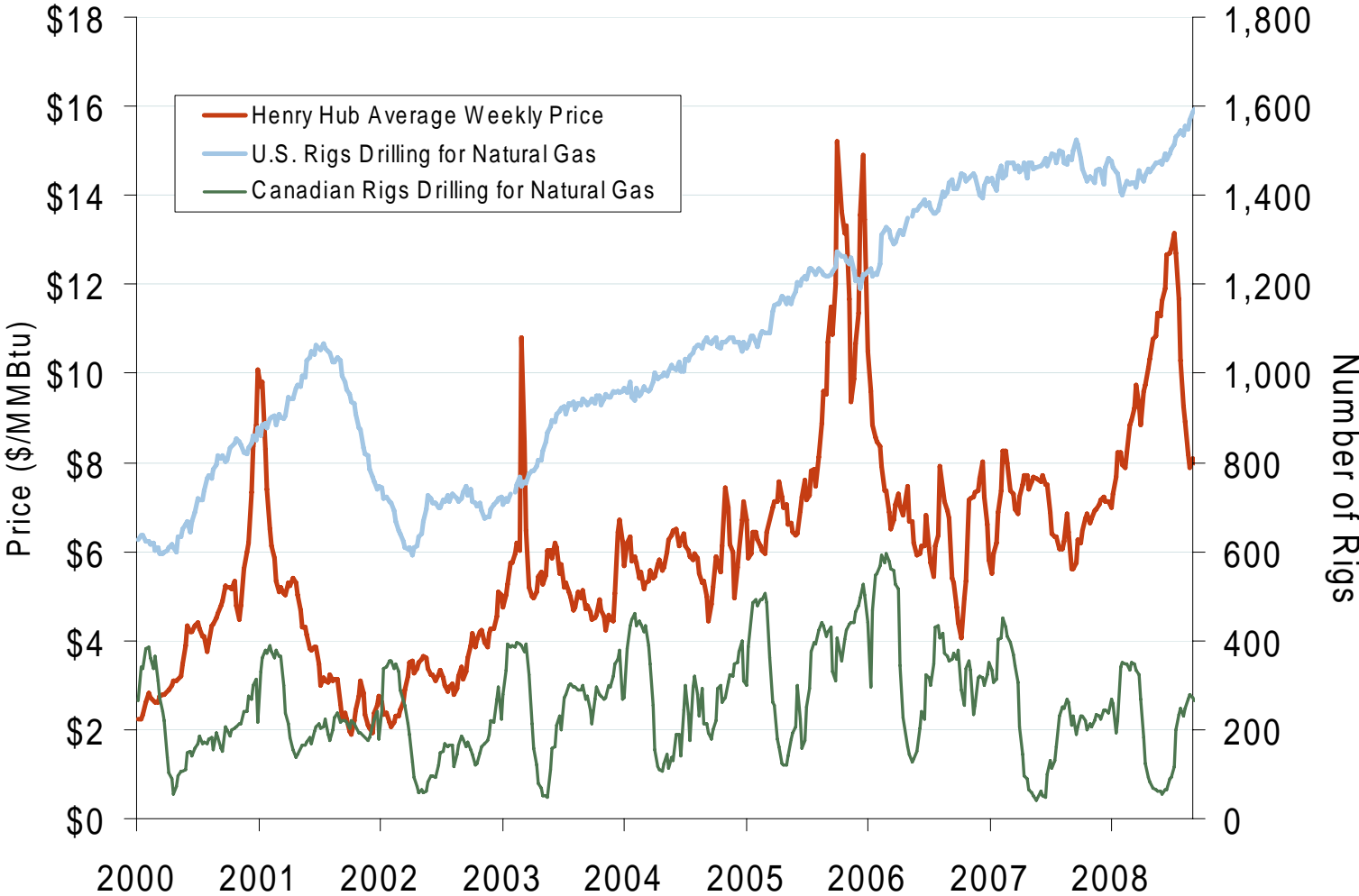


Source: Derived from EIA data.
September 2008 Mid-Atlantic Snapshot Report

Regional Totals of Working Gas in Storage

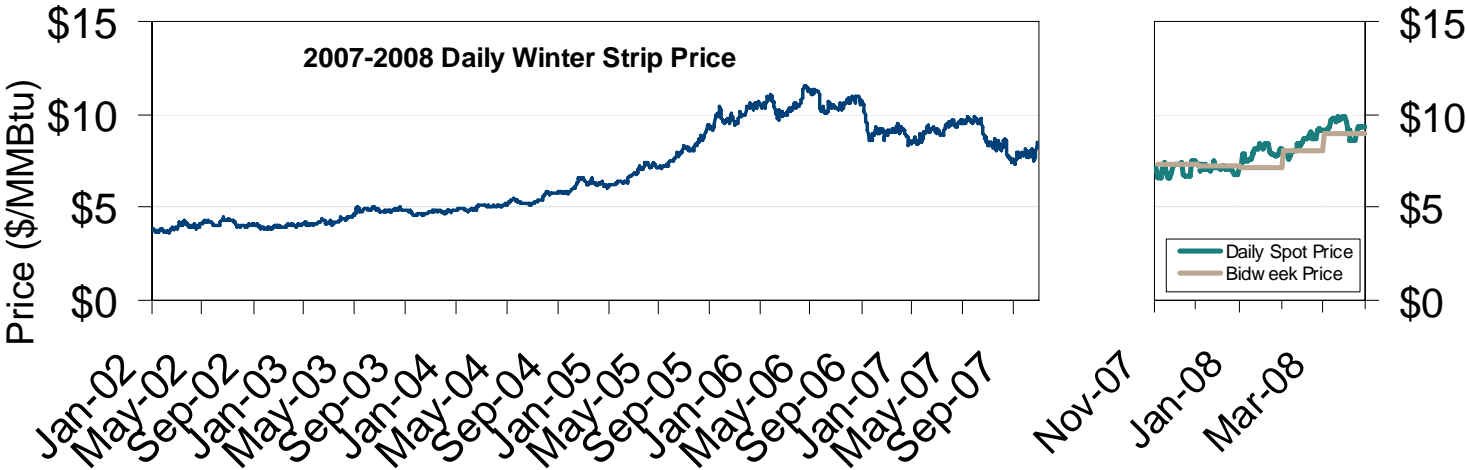
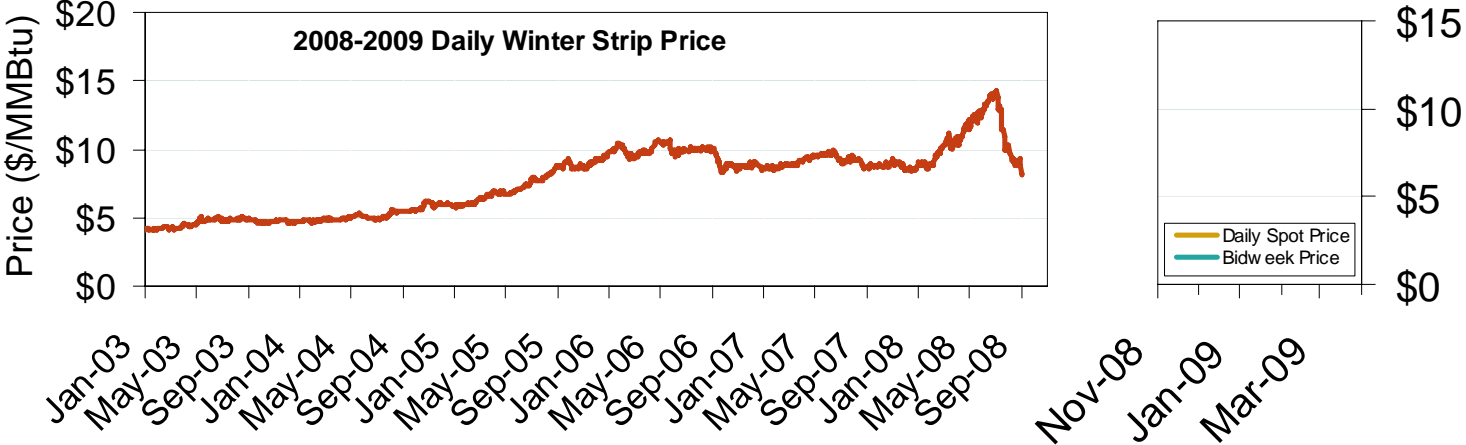


U.S. and Canadian Natural Gas Drilling Rig Count and Daily Spot Prices



Source: Derived from *Platts* and *Baker Hughes* data.
September 2008 Mid-Atlantic Snapshot Report

Natural Gas Winter Futures Strip and Daily Henry Hub Spot and Bidweek Prices

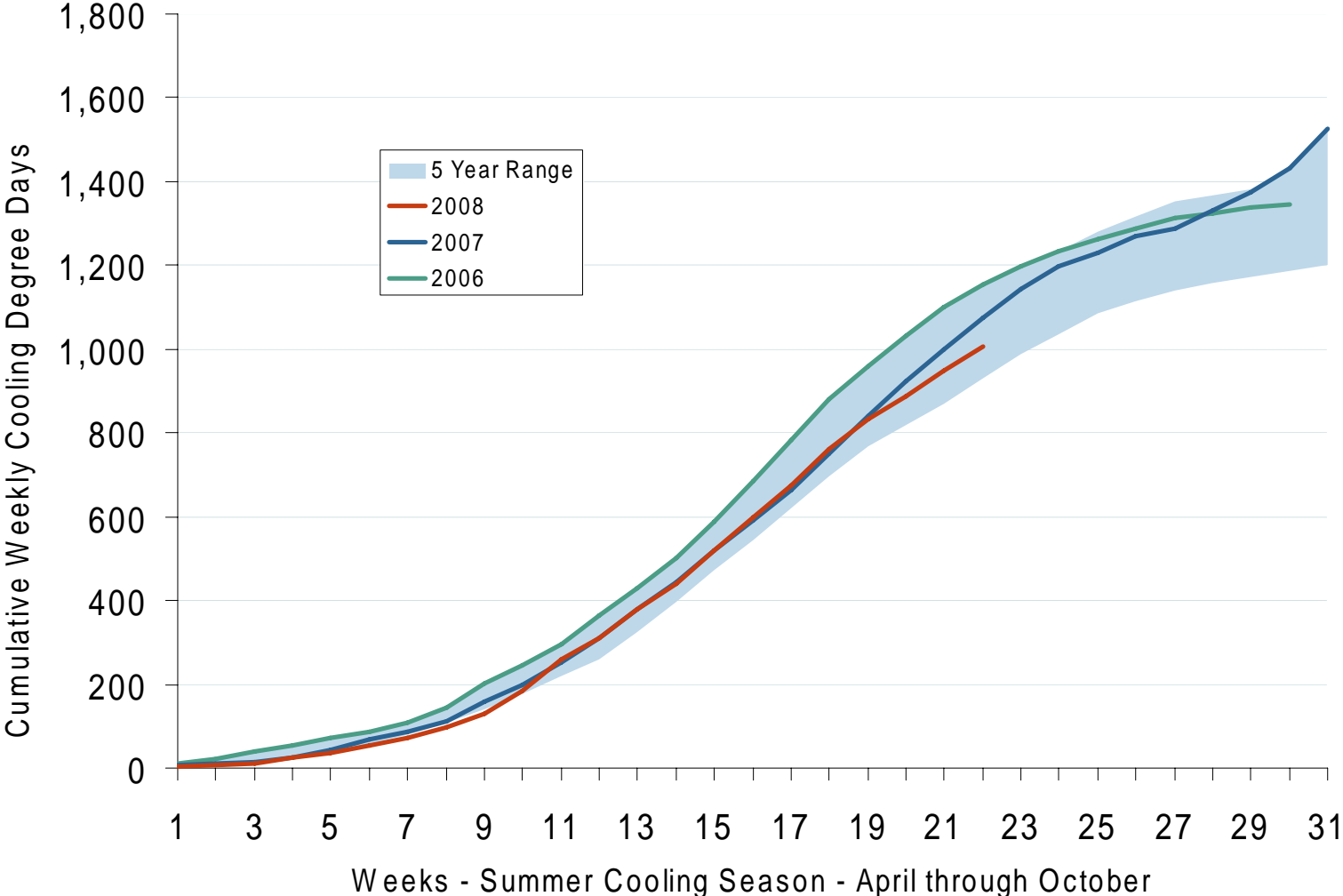


Source: Derived from *Platts* and *Nymex* data.
September 2008 Mid-Atlantic Snapshot Report



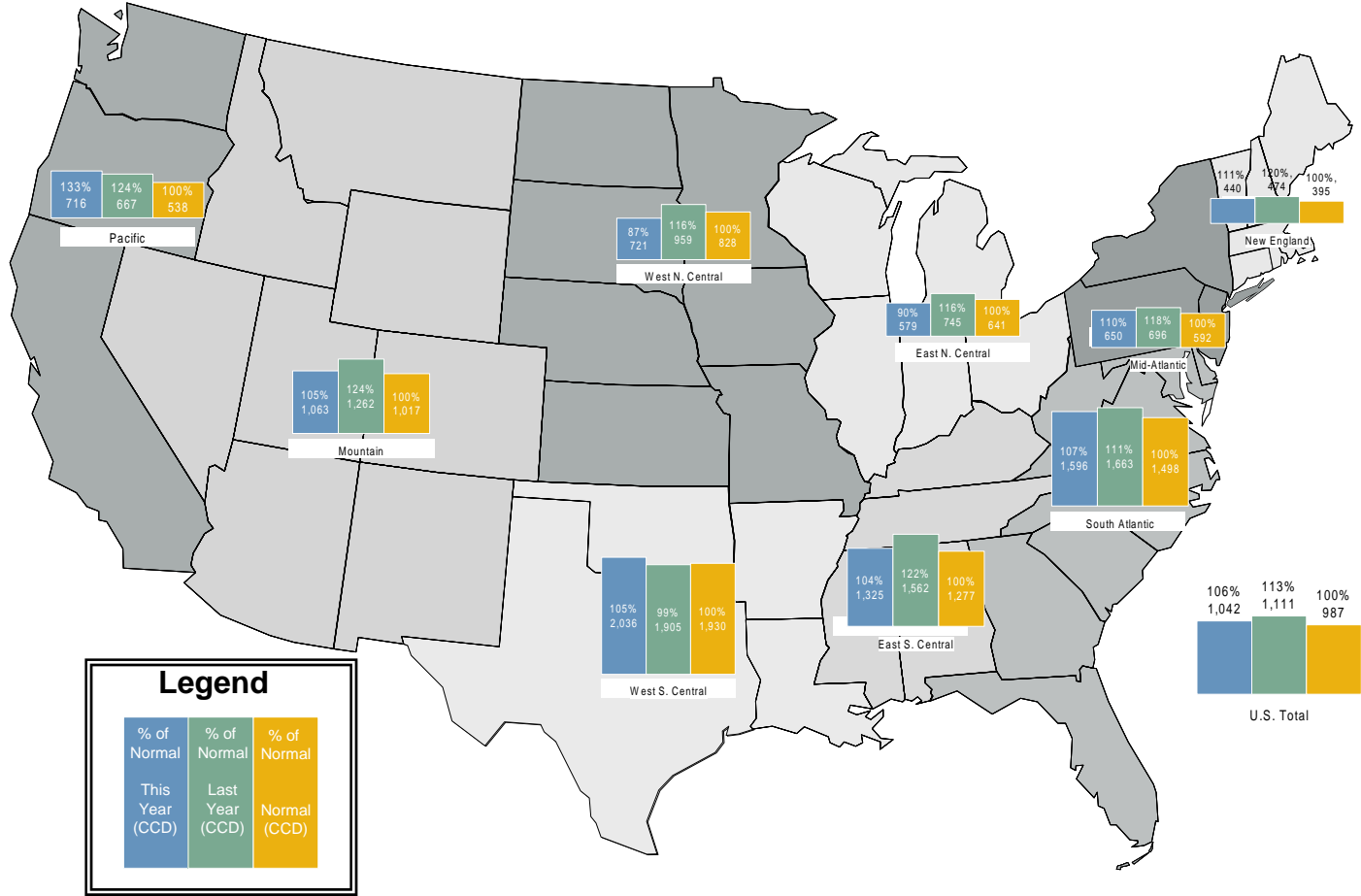
Market Fundamentals

U. S. Summer Cumulative Cooling Degree Days



Source: Derived from NOAA data.

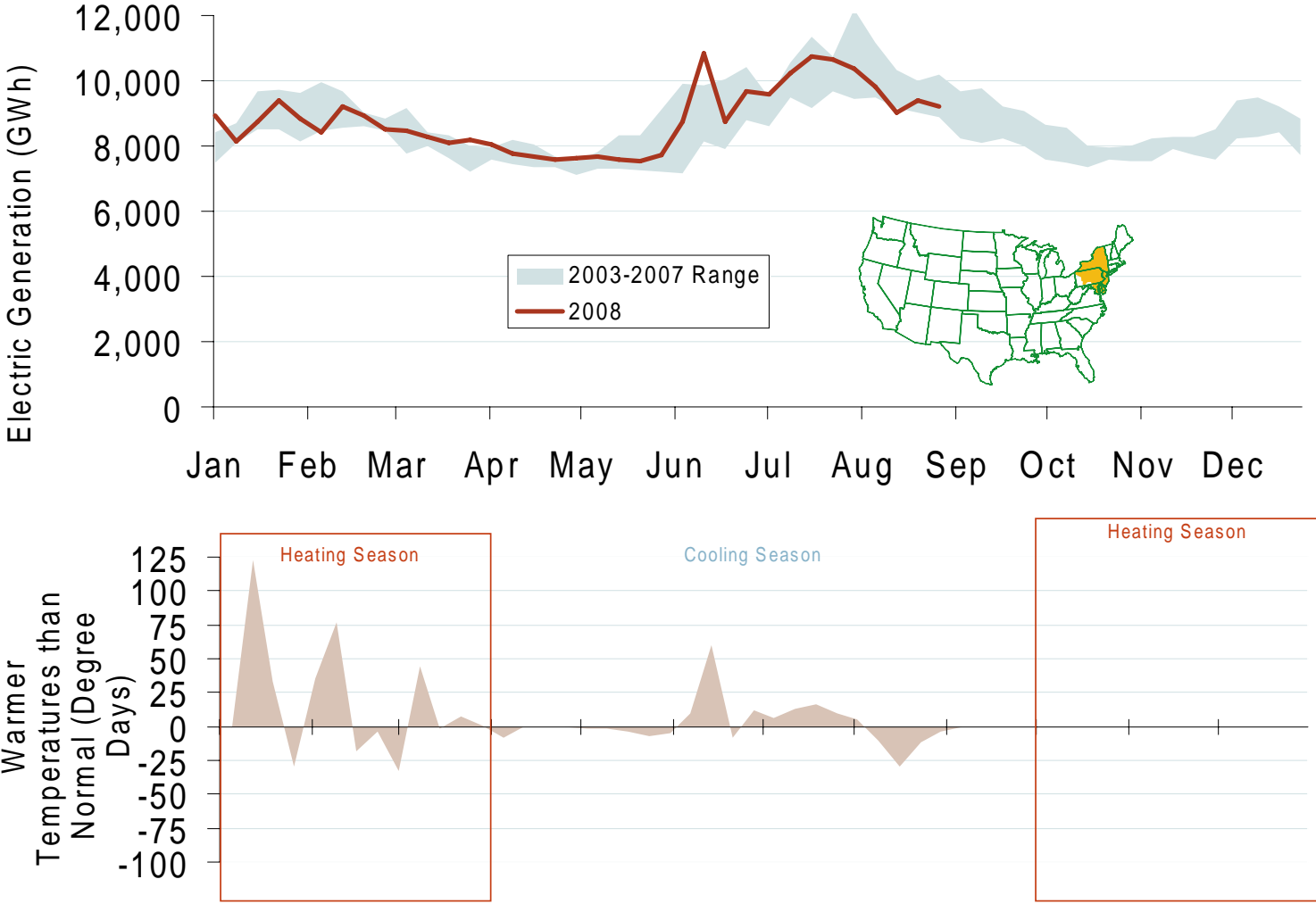
Regional Cooling Degree Days 2008 Through August



Source: Derived from NOAA data. Normal is based on a 30-year average of cooling degree days. September 2008 Mid-Atlantic Snapshot Report

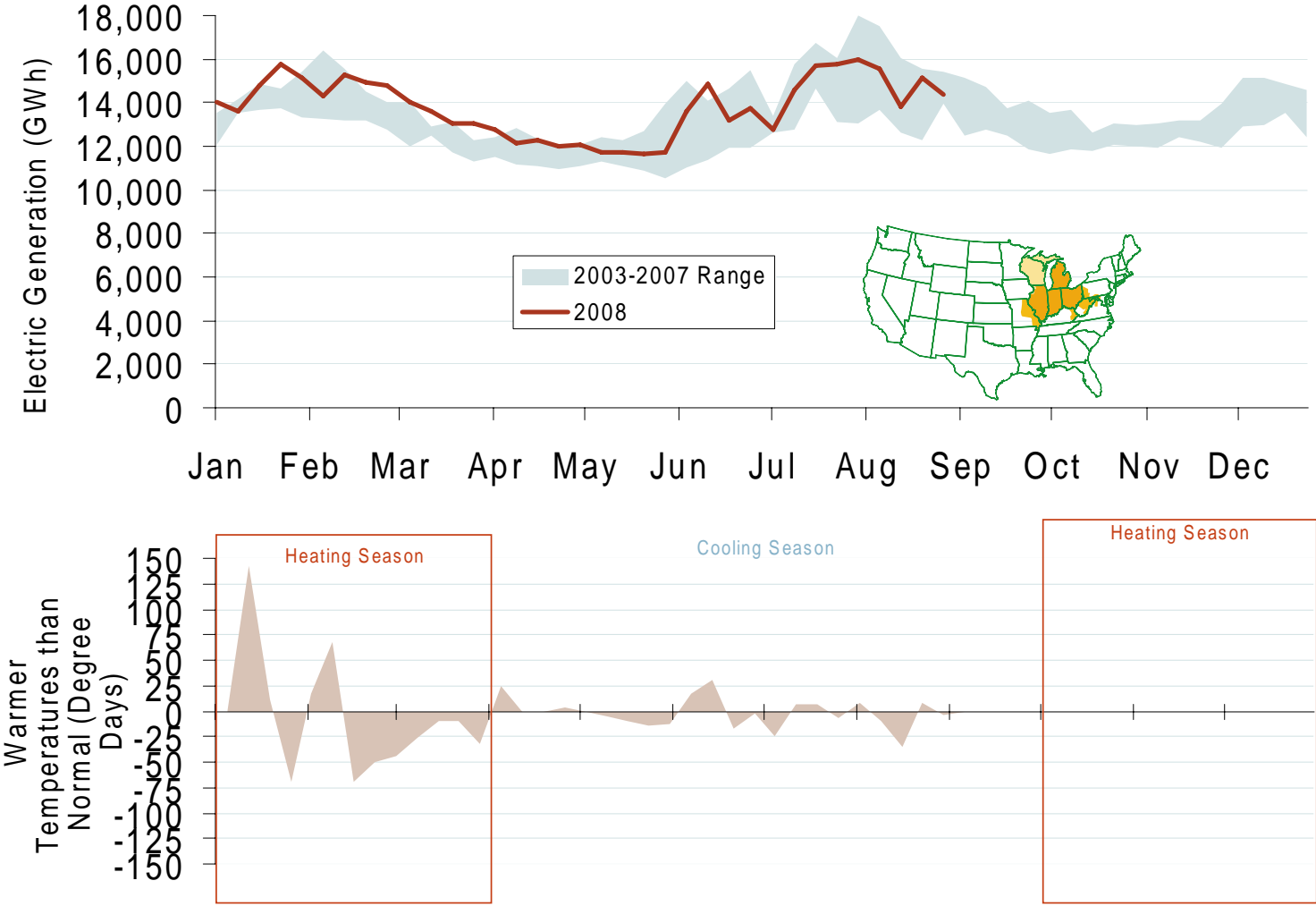
Updated September 5, 2008

Weekly Electric Generation Output and Temperatures Mid Atlantic Region



Source: Derived from *EEl* and *NOAA* data.
September 2008 Mid-Atlantic Snapshot Report

Weekly Electric Generation Output and Temperatures Central Industrial Region

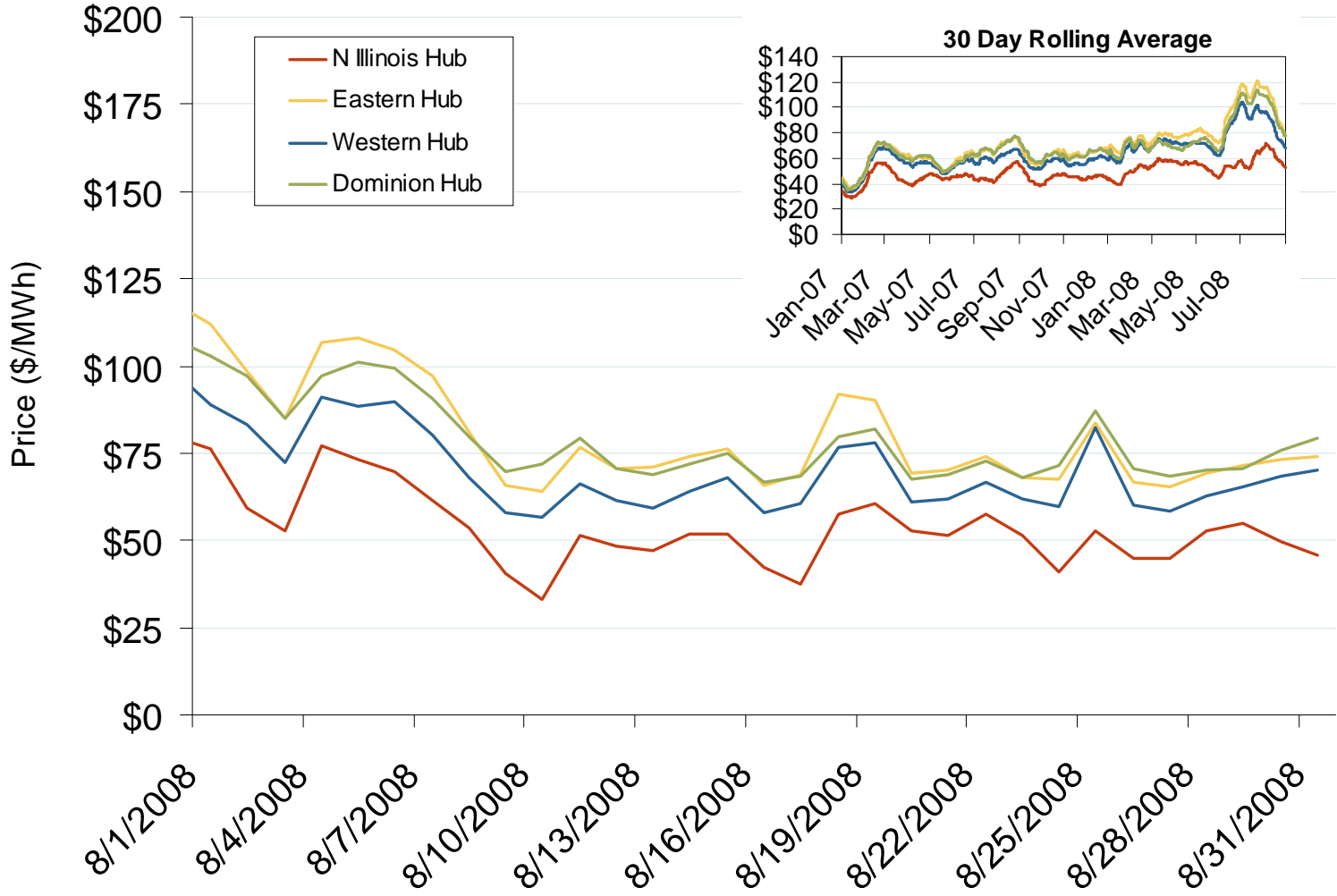


Source: Derived from *EEl* and *NOAA* data.
September 2008 Mid-Atlantic Snapshot Report

Prices and Market Analysis

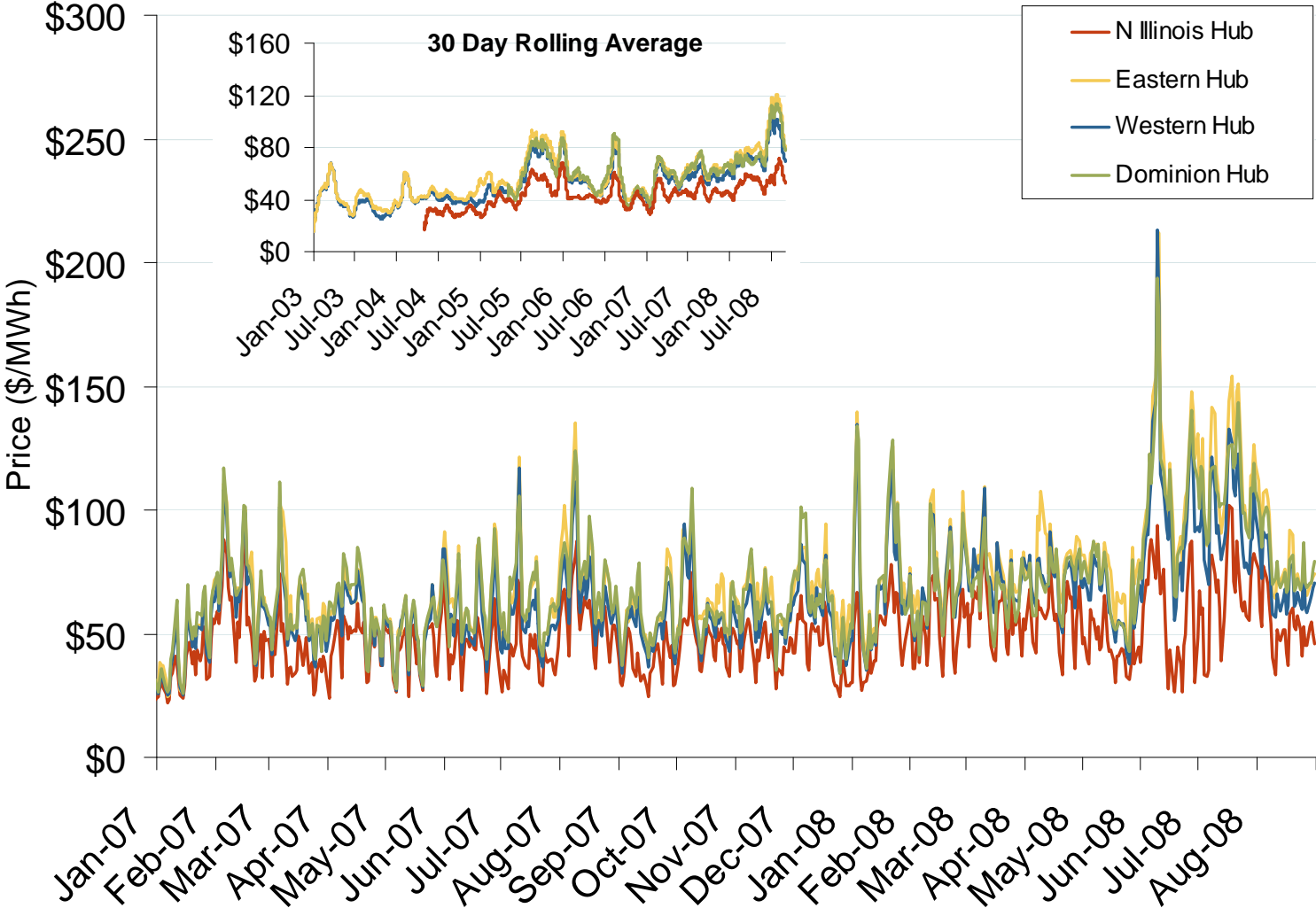
- **Electric**
- **Natural Gas**
- **Other Markets**

Daily Average of PJM Day-Ahead Prices - All Hours



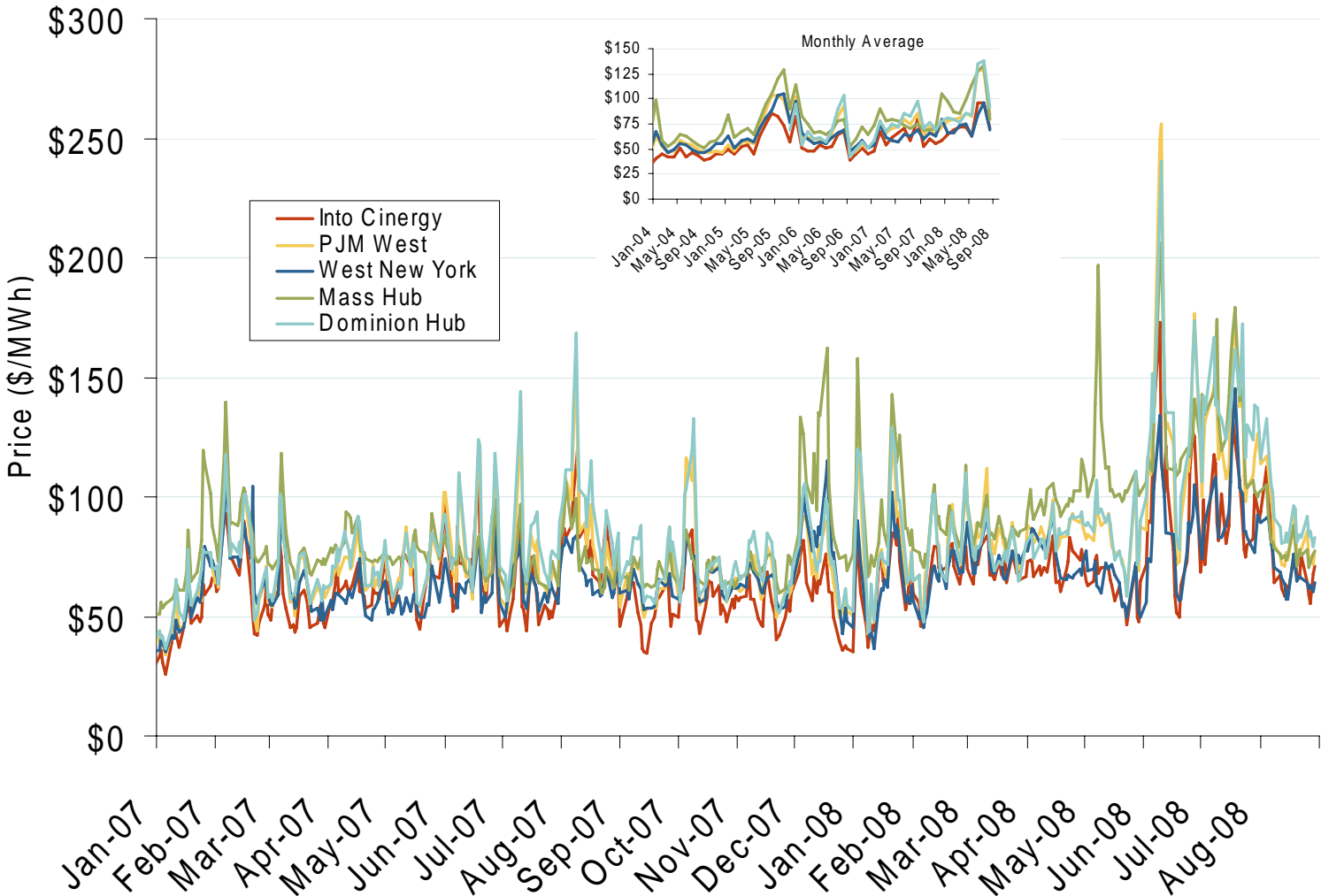
Source: Derived by Bloomberg from PJM data as reported by Bloomberg. September 2008 Mid-Atlantic Snapshot Report

Daily Average of PJM Day-Ahead Prices - All Hours



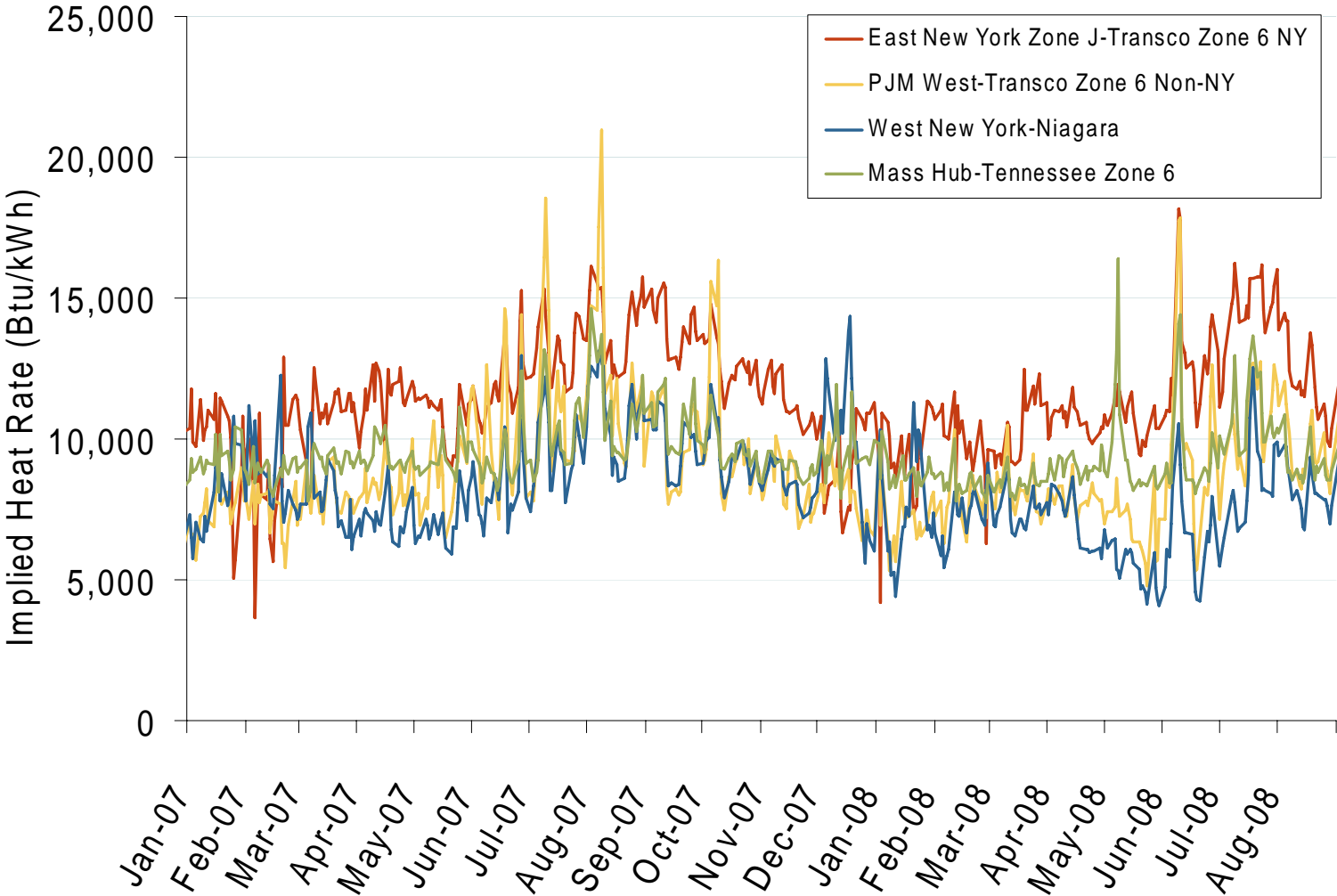
Source: Derived by Bloomberg from PJM data as reported by Bloomberg. September 2008 Mid-Atlantic Snapshot Report

Eastern Daily Bilateral Day-Ahead On-Peak Prices



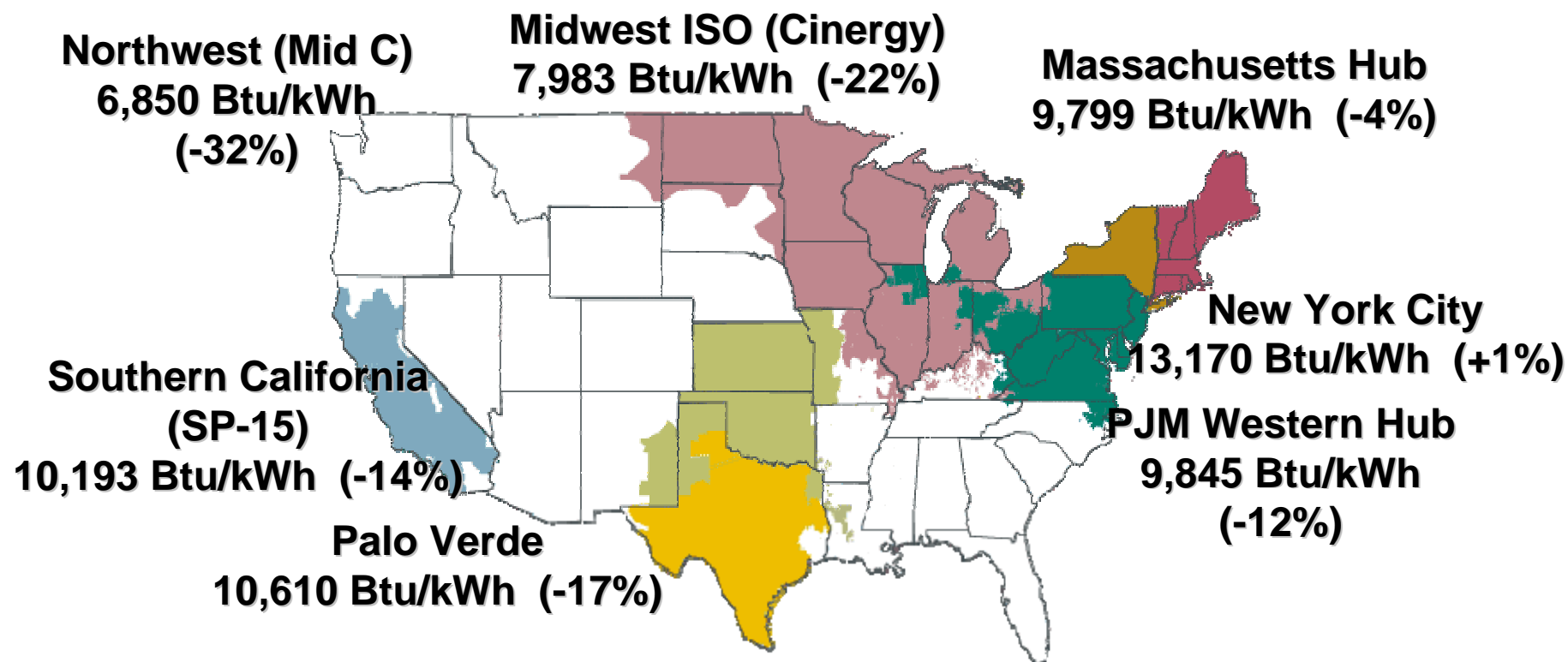
Source: Derived from *Platts* data.
September 2008 Mid-Atlantic Snapshot Report

Implied Heat Rates at Eastern Trading Points

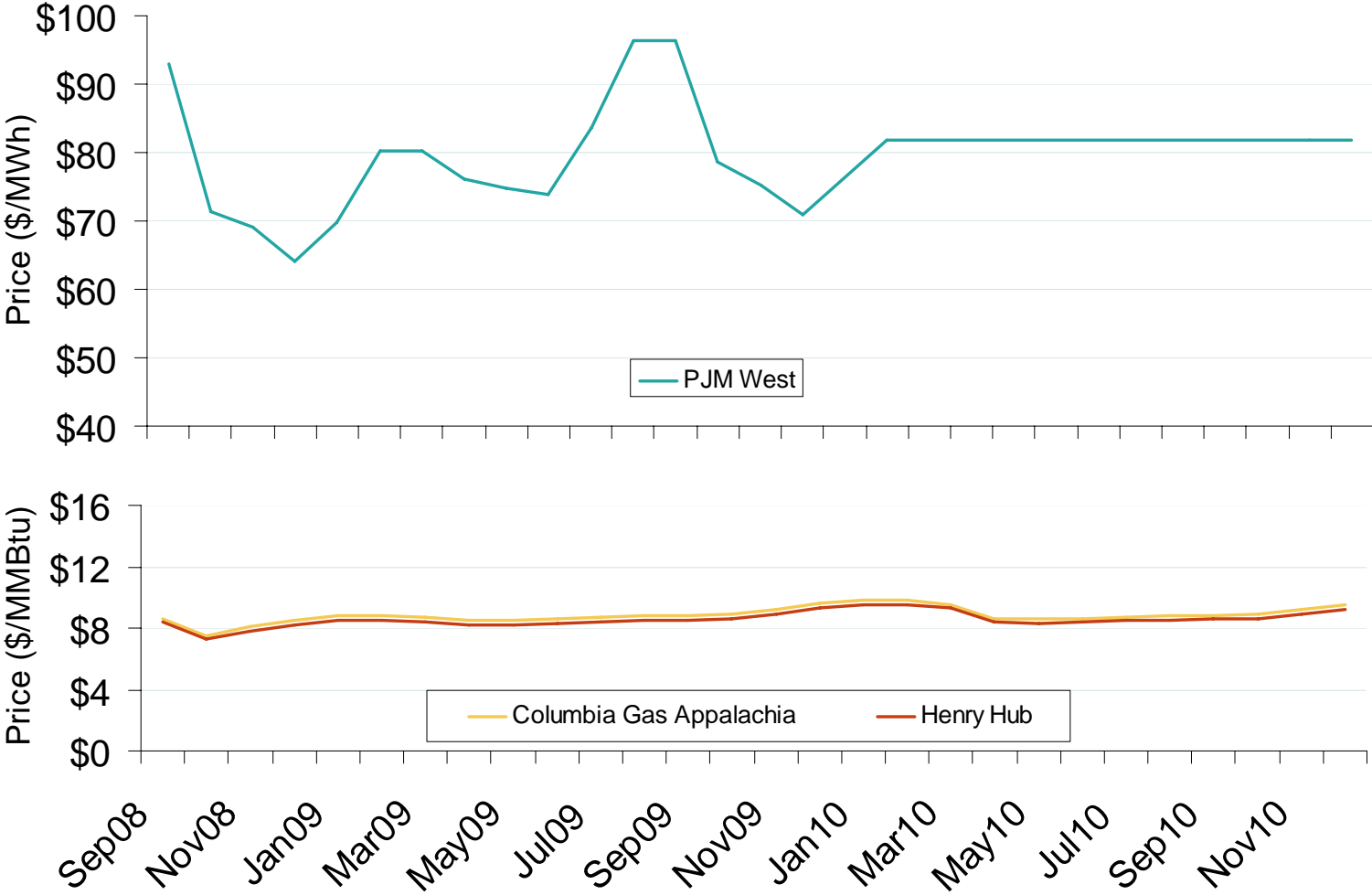


Source: Derived from *Platts* data
September 2008 Mid-Atlantic Snapshot Report

June-August Implied Heat Rates, 2008 vs. 2007

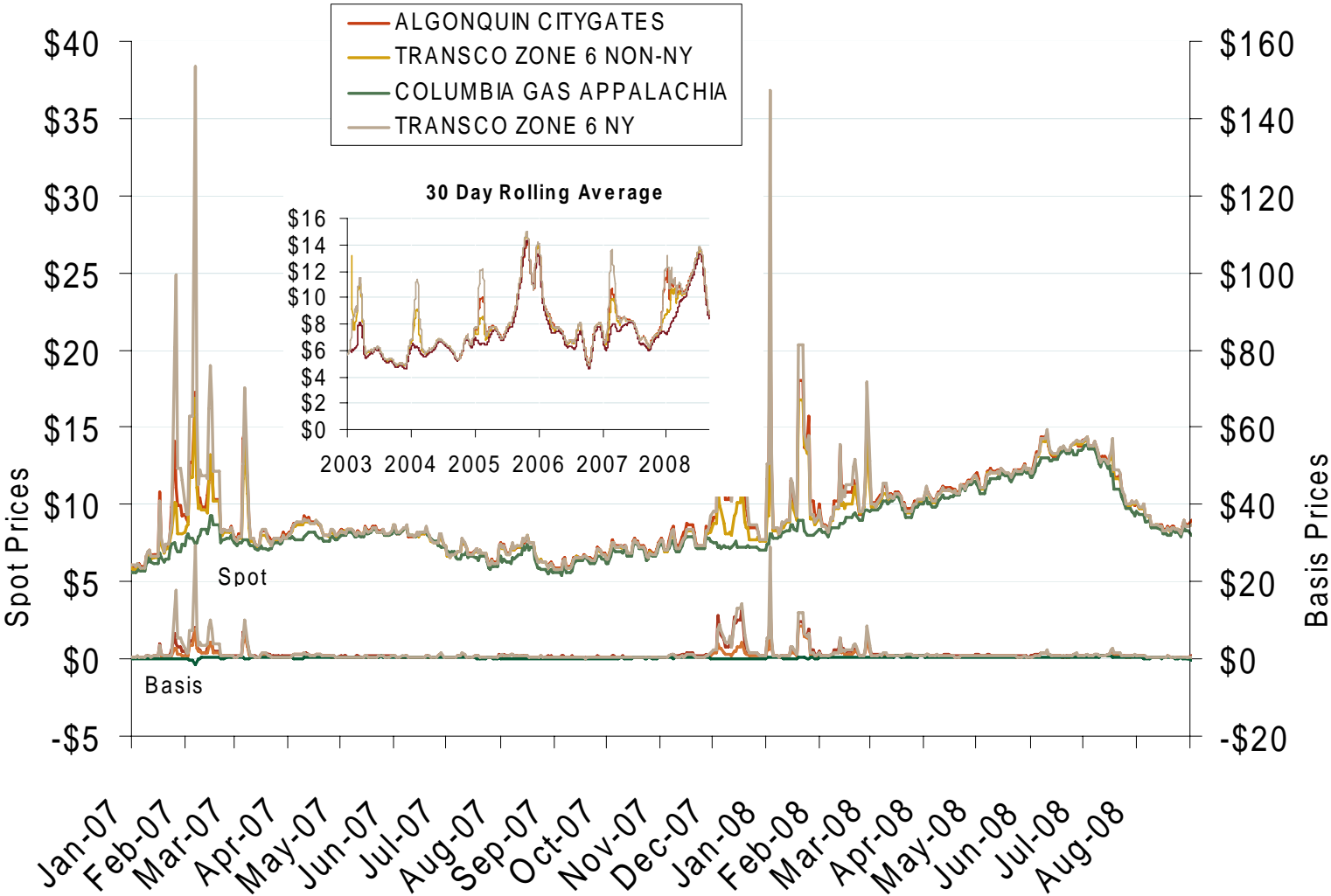


PJM West Electric Forward Price Curve and Selected Natural Gas Forward Curves



Source: Derived from Nymex data.
September 2008 Mid-Atlantic Snapshot Report

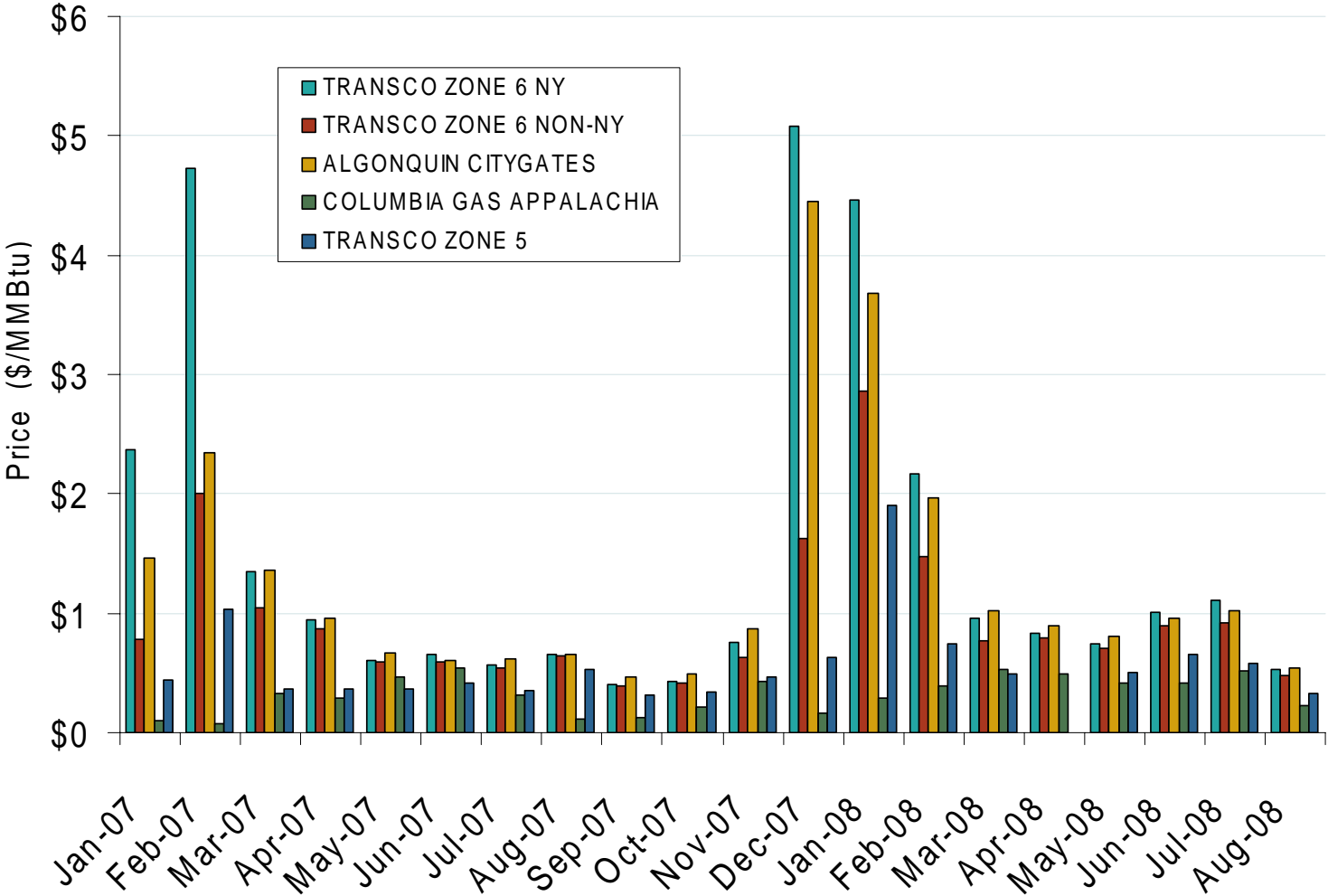
Northeastern Spot Prices and Basis



Source: Derived from *Platts* data.
September 2008 Mid-Atlantic Snapshot Report

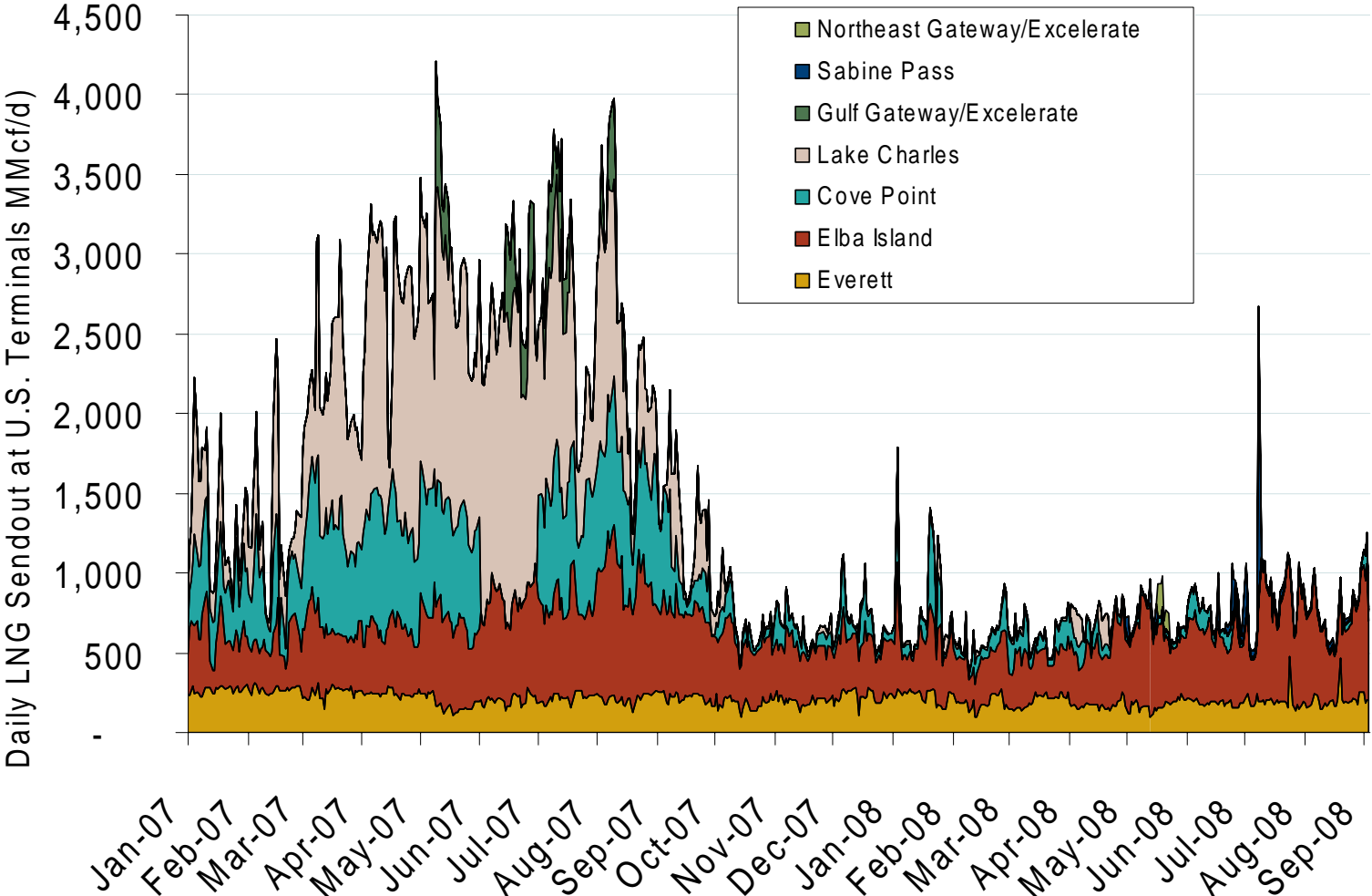
Updated September 5, 2008₂₀₃₀

Northeastern Monthly Average Basis Value to Henry Hub



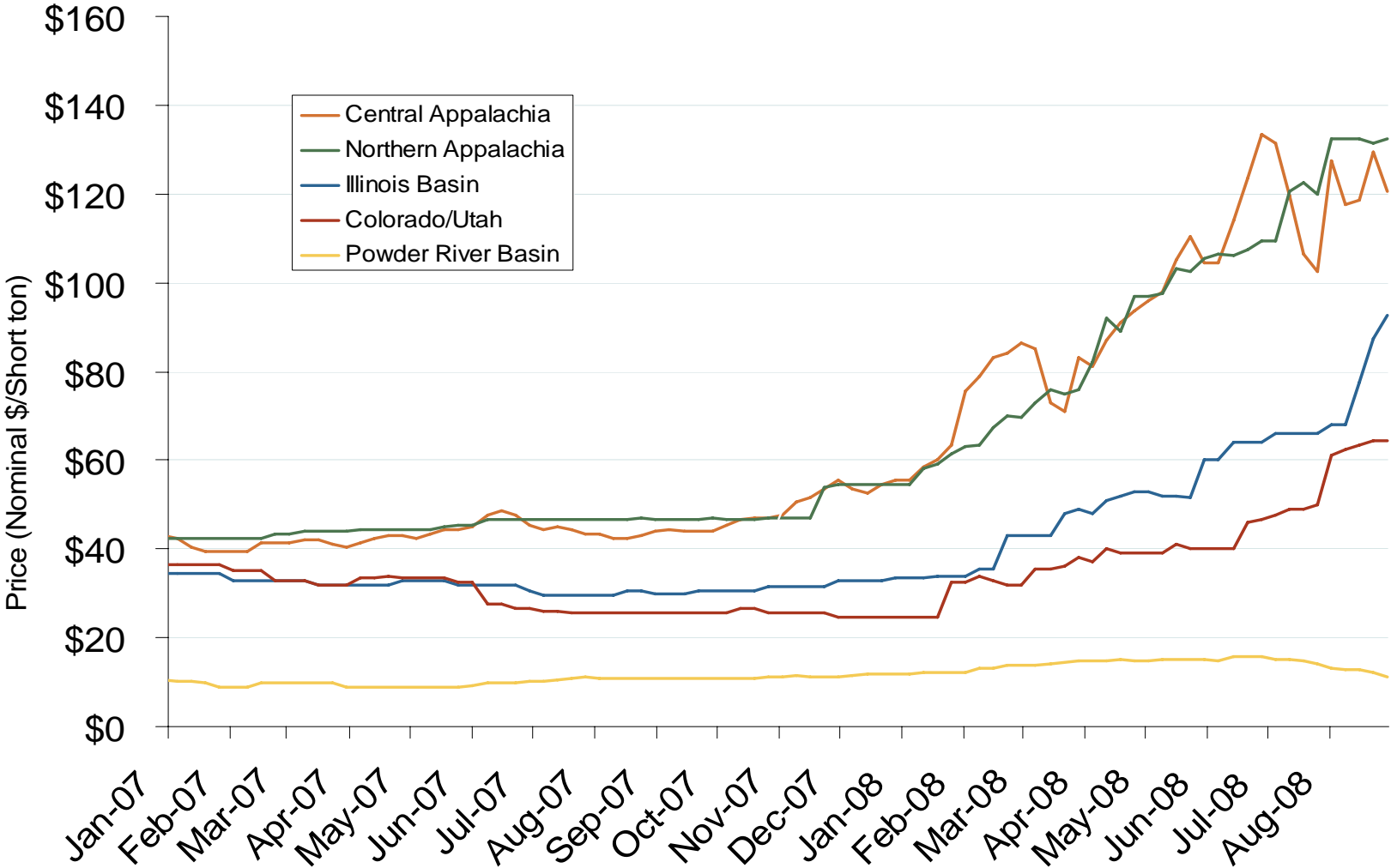
Source: Derived from *Platts* data.
September 2008 Mid-Atlantic Snapshot Report

Daily Gas Sendout from Existing U.S. LNG Facilities



Source: Derived from *Bentek* data. Excludes Everett LNG delivered via truck and consumed by the Mystic plant as well as Freeport LNG which flows via intrastate pipelines.
 September 2008 Mid-Atlantic Snapshot Report

Regional Coal Spot Prices

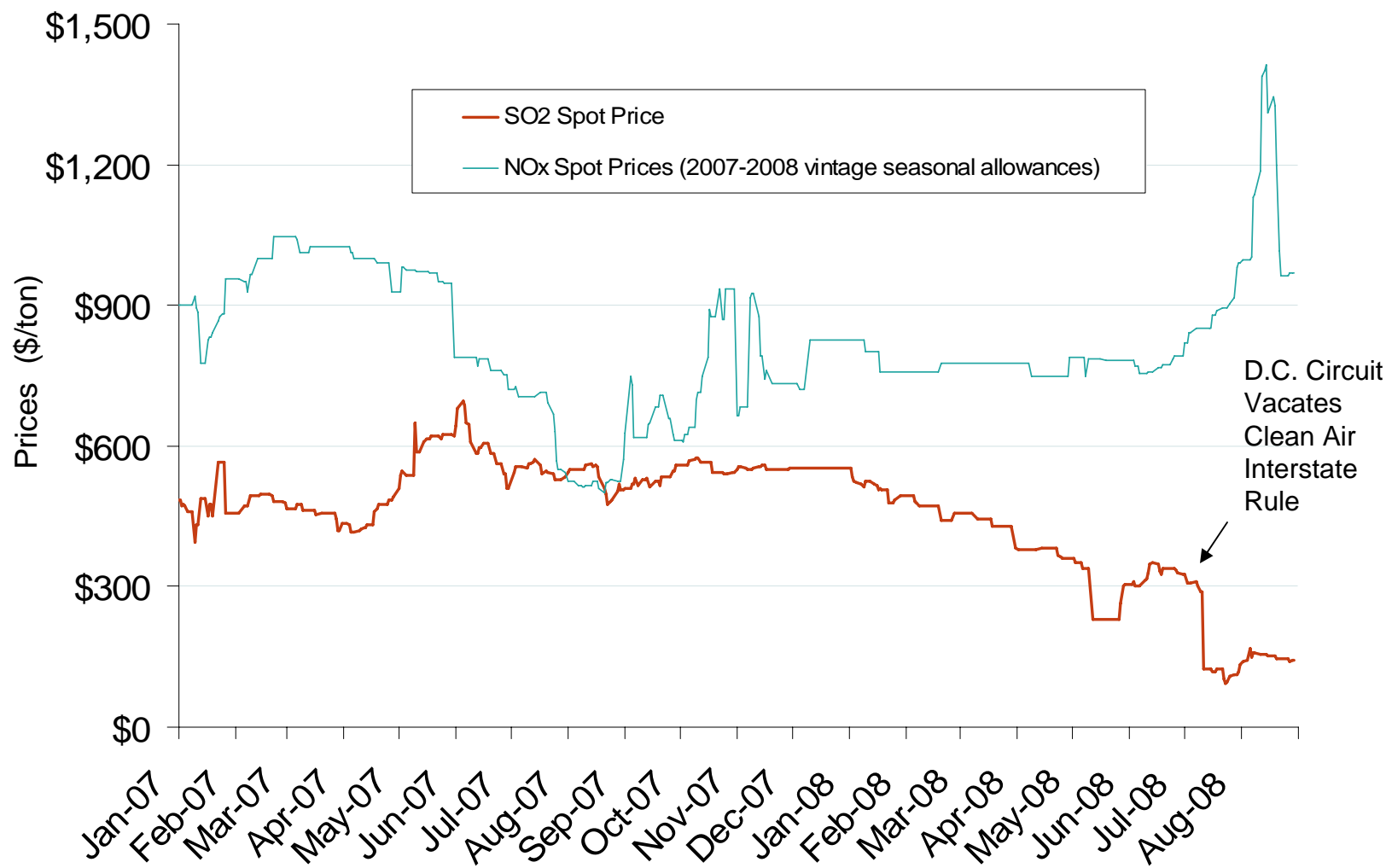


Note: Does not reflect the delivered price of coal; excludes incremental cost of emissions allowances.

Source: Derived from *Bloomberg* data.
September 2008 Mid-Atlantic Snapshot Report

Updated September 5, 2008

SO₂ Allowance Spot Prices and NOx Seasonal Allowance Spot Prices

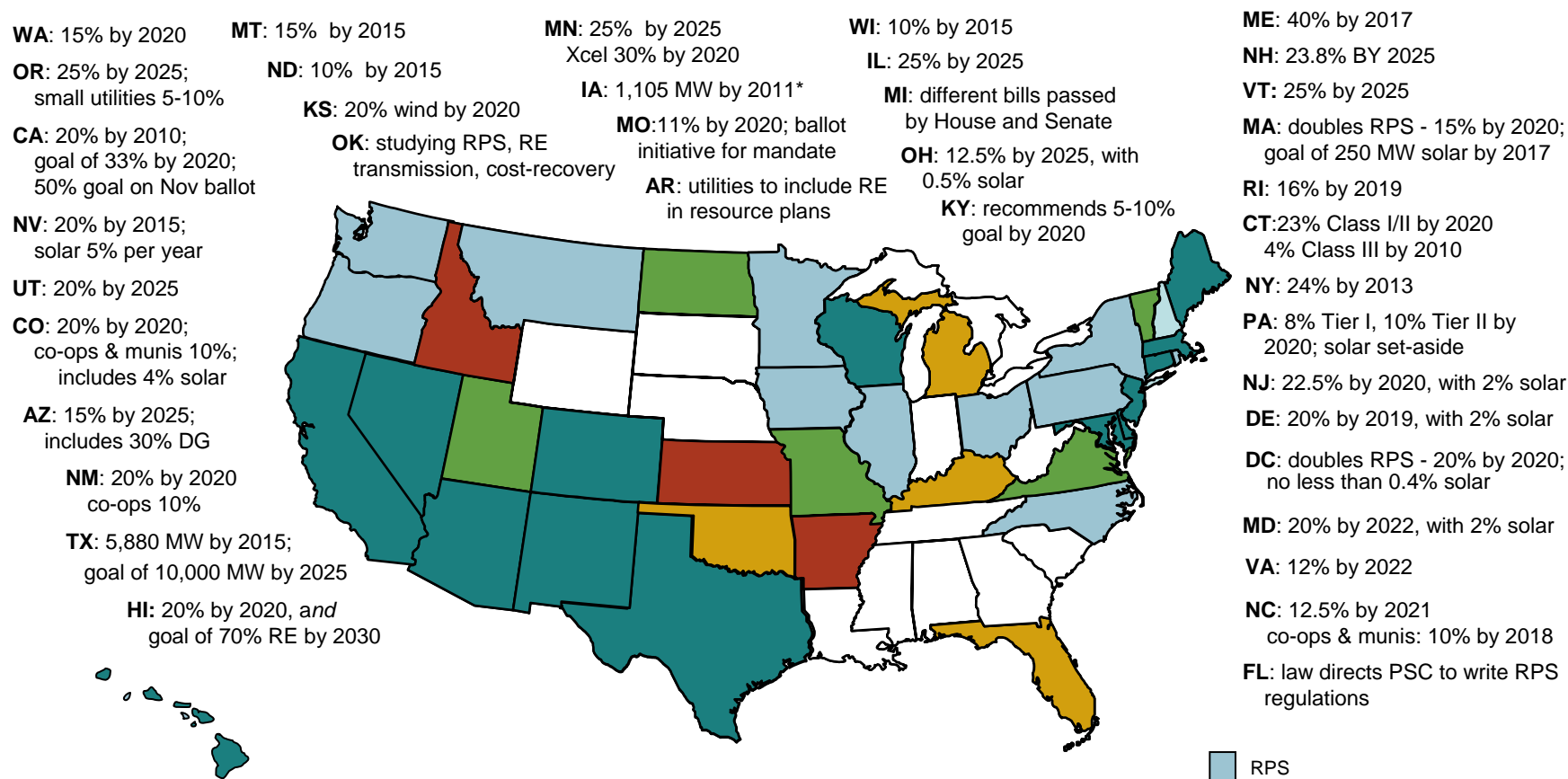


Source: Derived from *Cantor Fitzgerald* data.

See notes on following pages.
September 2008 Mid-Atlantic Snapshot Report

Updated August 14, 2008

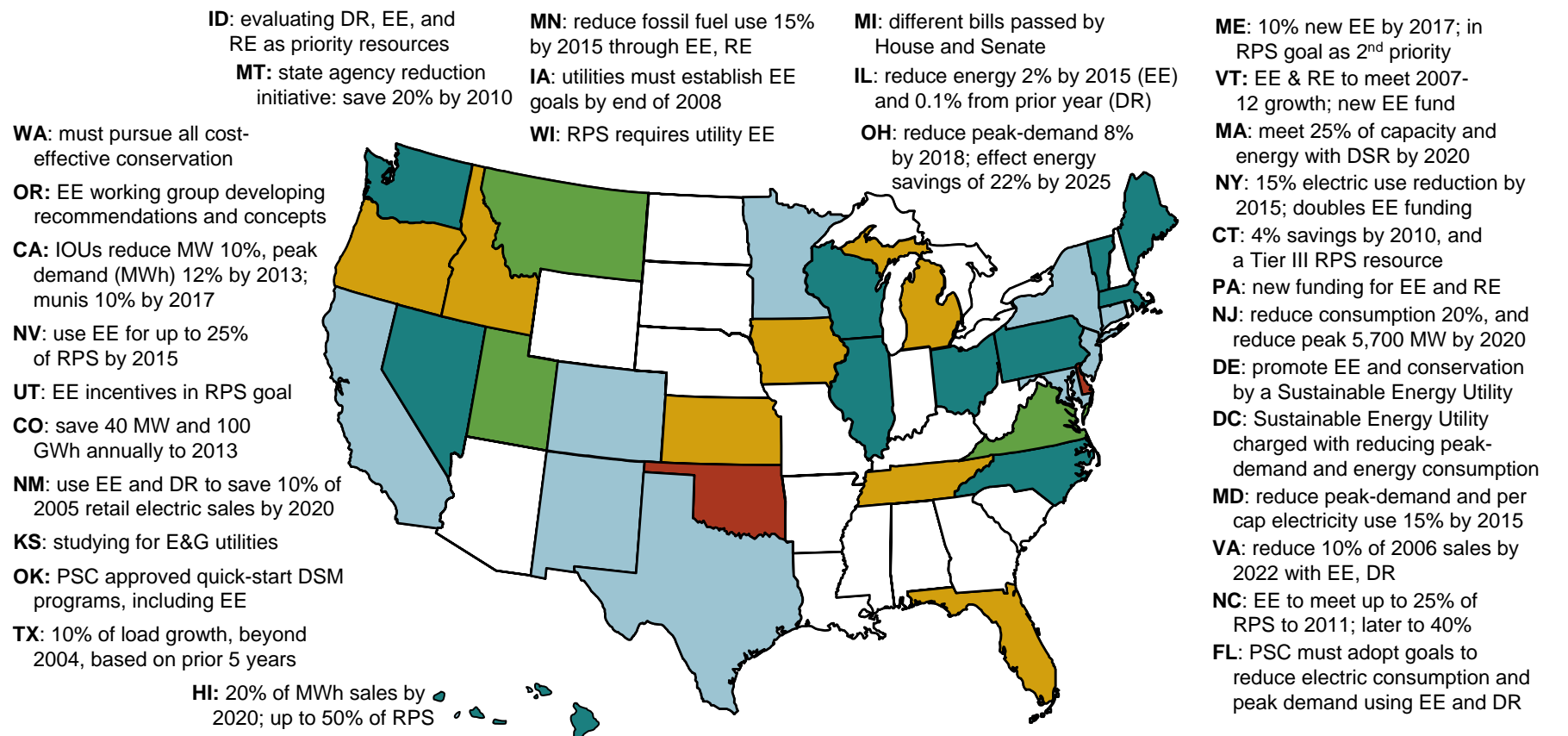
Renewable Energy Portfolio Standards (RPS)



Updates at: <http://www.ferc.gov/market-oversight/mkt-electric/overview/elec-ovr-rps.pdf>

Notes: Alaska has no RPS; DG is distributed generation; * Iowa has a goal of 1,000 MW of wind by 2010
Sources: Derived from data in: EEI, EIA, LBNL, PUCs, State legislative tracking services, Database of State Incentives for Renewables and Efficiency, and the Union of Concerned Scientists.

Energy Efficiency Resource Standards (EERS)



Updates at: <http://www.ferc.gov/market-oversight/mkt-electric/overview/elec-ovr-eeeps.pdf>

Abbreviations: CHP – Combined heat & power; DR - demand response; DSM - demand side management; DSR – demand-side resources; EE - energy efficiency; E&G: electric and gas utilities; RPS: Renewable Portfolio Standard

Sources: ACEEE, EPA, Regulatory Assistance Project, Union of Concerned Scientists, State regulatory and legislative sites, trade press