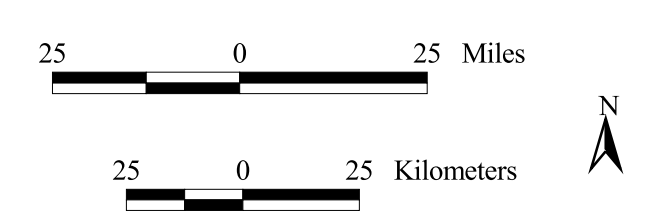


**MMS** U.S. Department of the Interior  
Minerals Management Service  
Gulf of Mexico OCS Region



## Biologically Sensitive Areas (<400m) September 2003

- Topographic Features Stipulation Blocks
- "No Activity Zones"
- Live Bottom (Low Relief) Stipulation Blocks
- Live Bottom (Pinnacle Trend) Stipulation Blocks
- Planning area boundary
- Protraction boundary

Scale: 1:1624000  
Projection: Albers Equal-Area Conic  
Spheroid: Clarke 1866  
Central Meridian: -89.17433  
Reference Latitude: 27.03441  
Standard Parallel 1: 24.89332  
Standard Parallel 2: 29.17550