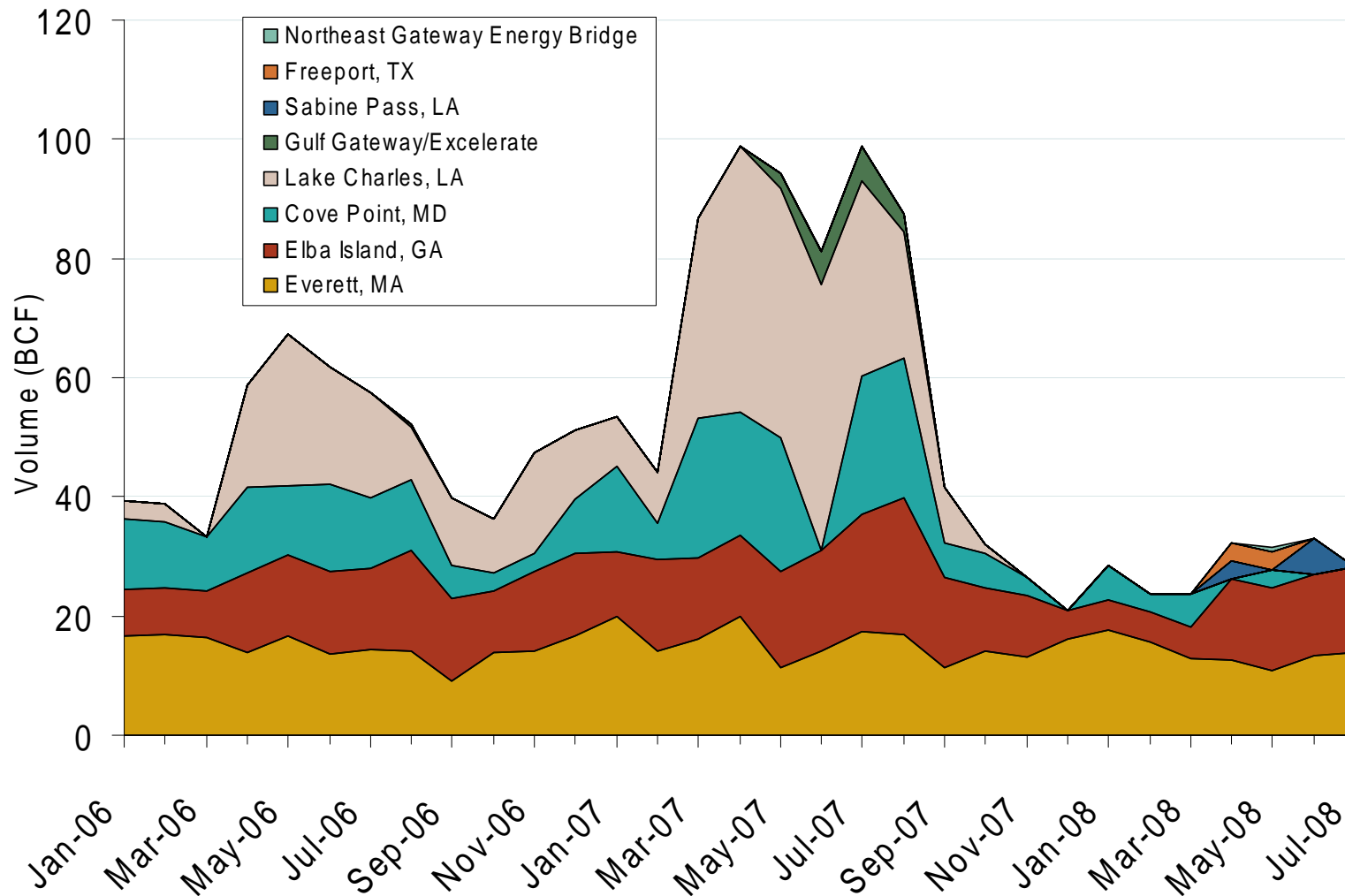
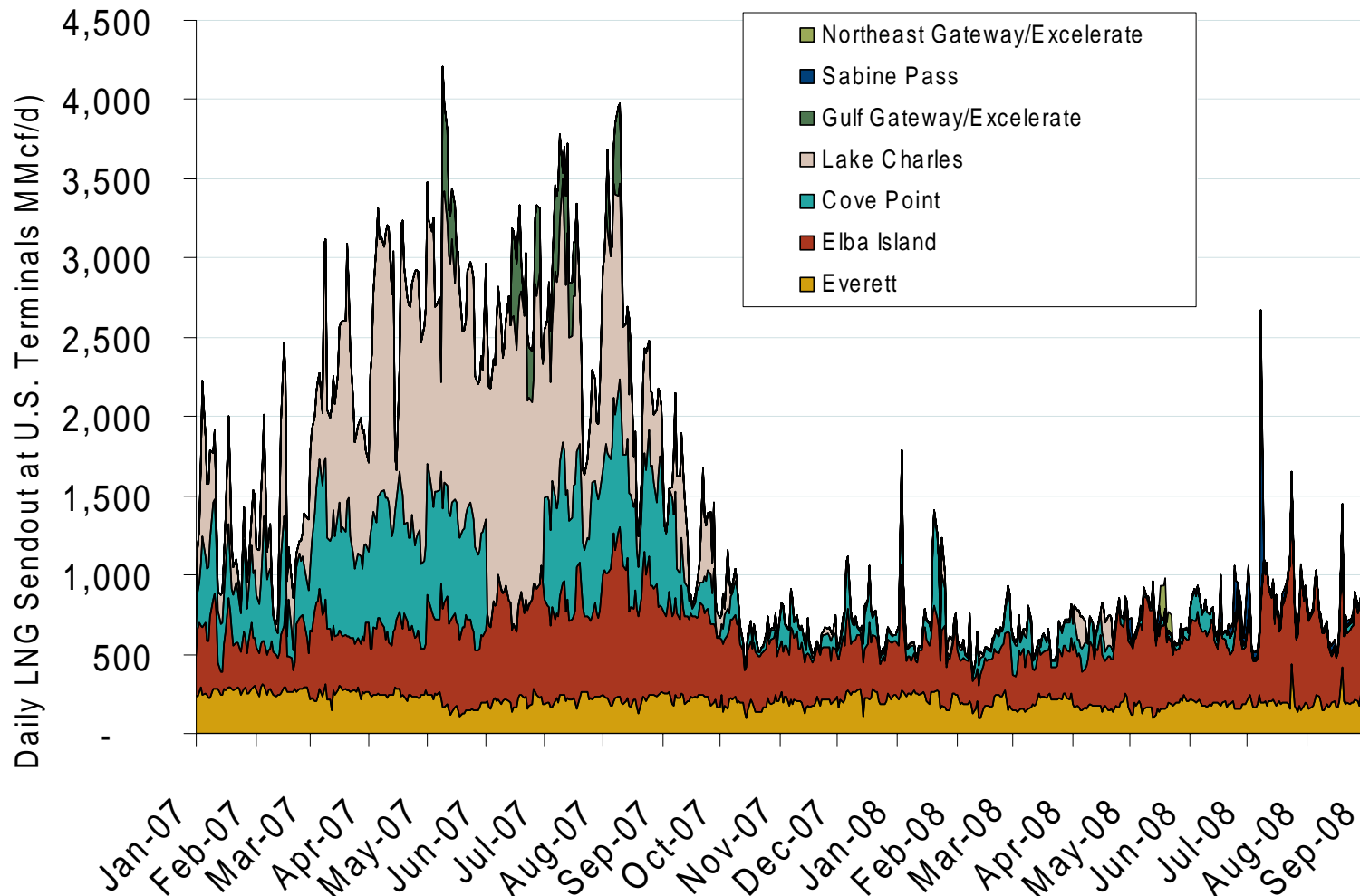


Monthly Gas Imports at Existing U.S. LNG Facilities



Source: Derived from DOE Office of Fossil Energy data.

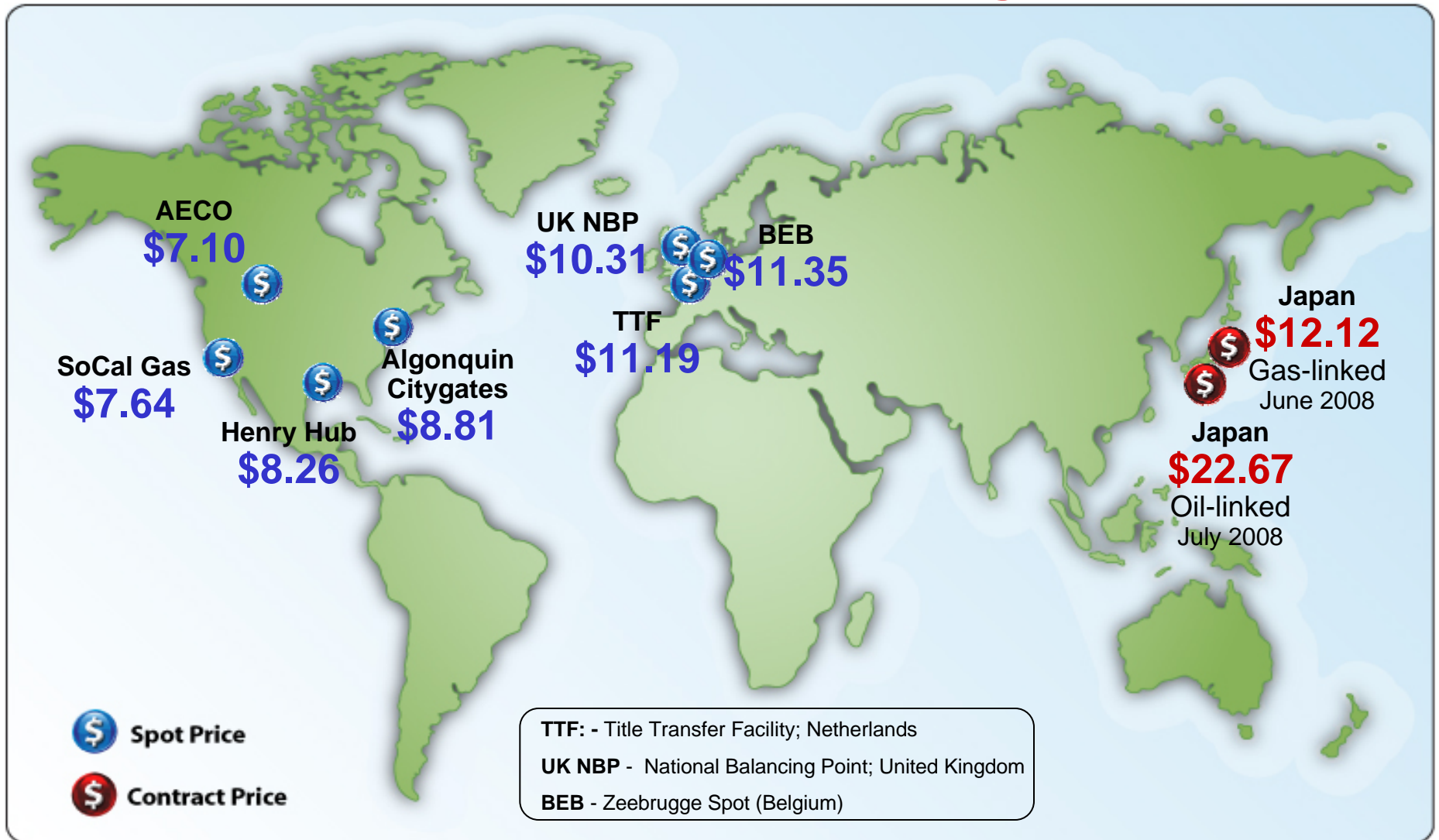
Daily Gas Sendout from Existing U.S. LNG Facilities



Source: Derived from *Bentek* data. Excludes Everett LNG delivered via truck and consumed by the Mystic plant as well as Freeport LNG which flows via intrastate pipelines.

Updated September 5, 2008 3007

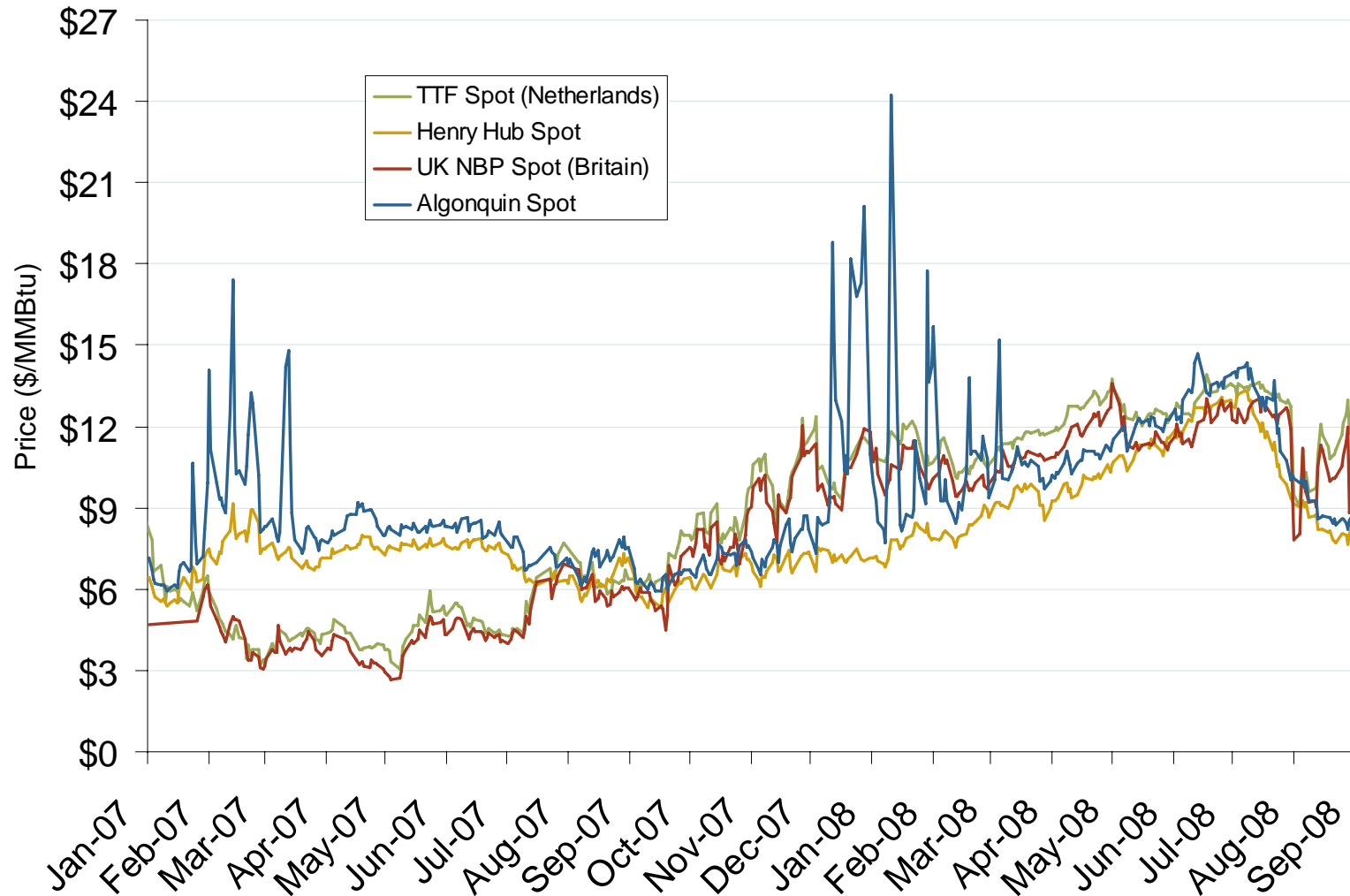
World Natural Gas Prices for August 2008



Source: Derived from *Bloomberg, ICE, ICAP and LNG Japan Corp.* data. Prices are a monthly average of daily spot prices, except Japanese prices are monthly contract prices. All prices in \$US/MMBtu.

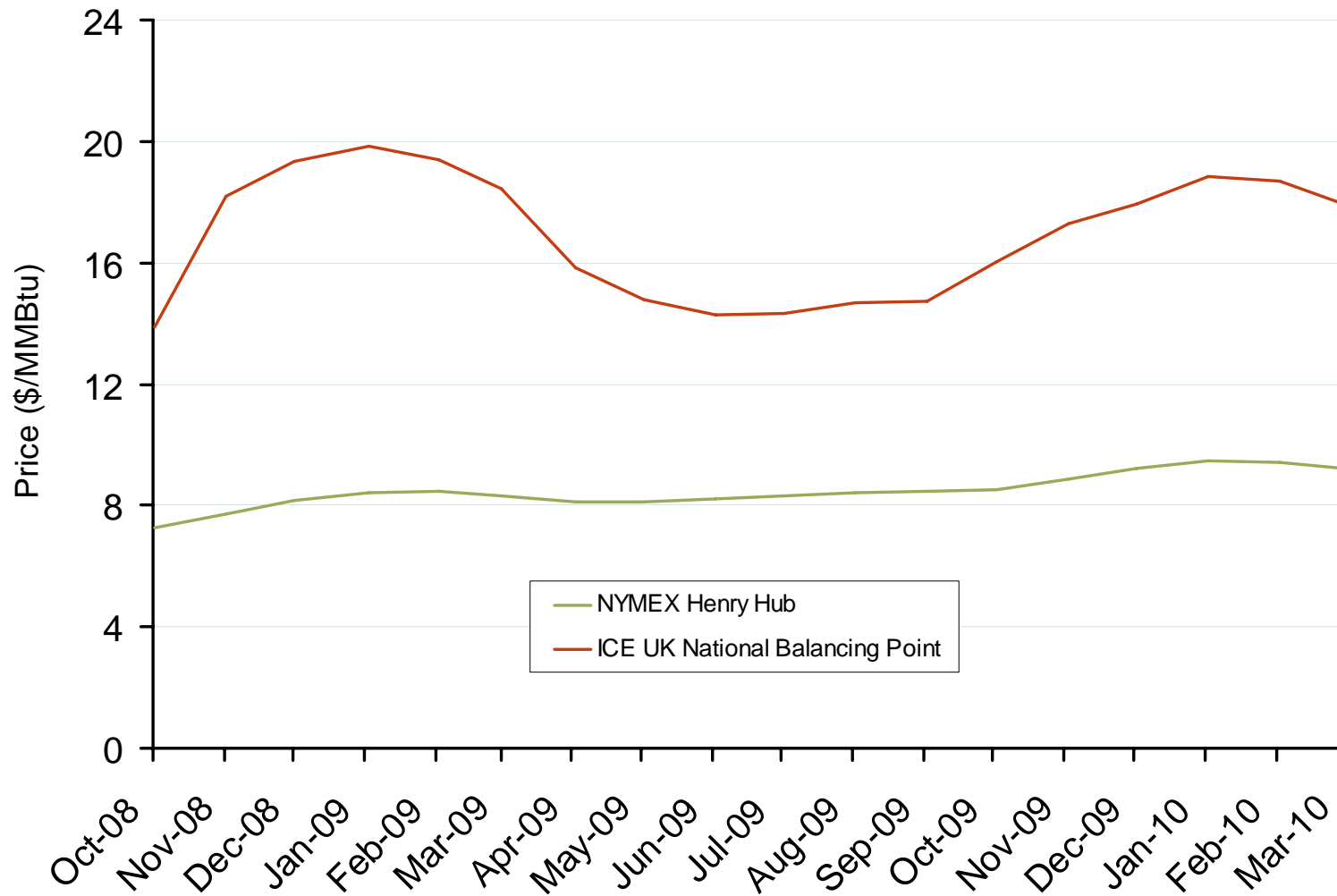
Updated September 5, 2008

Atlantic Basin European and US Spot Natural Gas Prices



Source: Derived from Bloomberg and ICE data.

NYMEX Henry Hub and ICE UK National Balancing Point Natural Gas Forward Price Curves



Source: Derived from NYMEX and ICE data.

Updated September 5, 2008

3016