

# News

U.S. Department of Labor  
Bureau of Labor Statistics  
Two Pershing Square Building  
2300 Main Street, Suite 1190  
Kansas City, Missouri 64108



FOR FURTHER INFORMATION:

(816) 285-7000

Media Contact: Jacqueline Michael-Midkiff (816) 285-7001

WWW Access: <http://www.bls.gov/ro7>

FOR RELEASE:

September 16, 2008

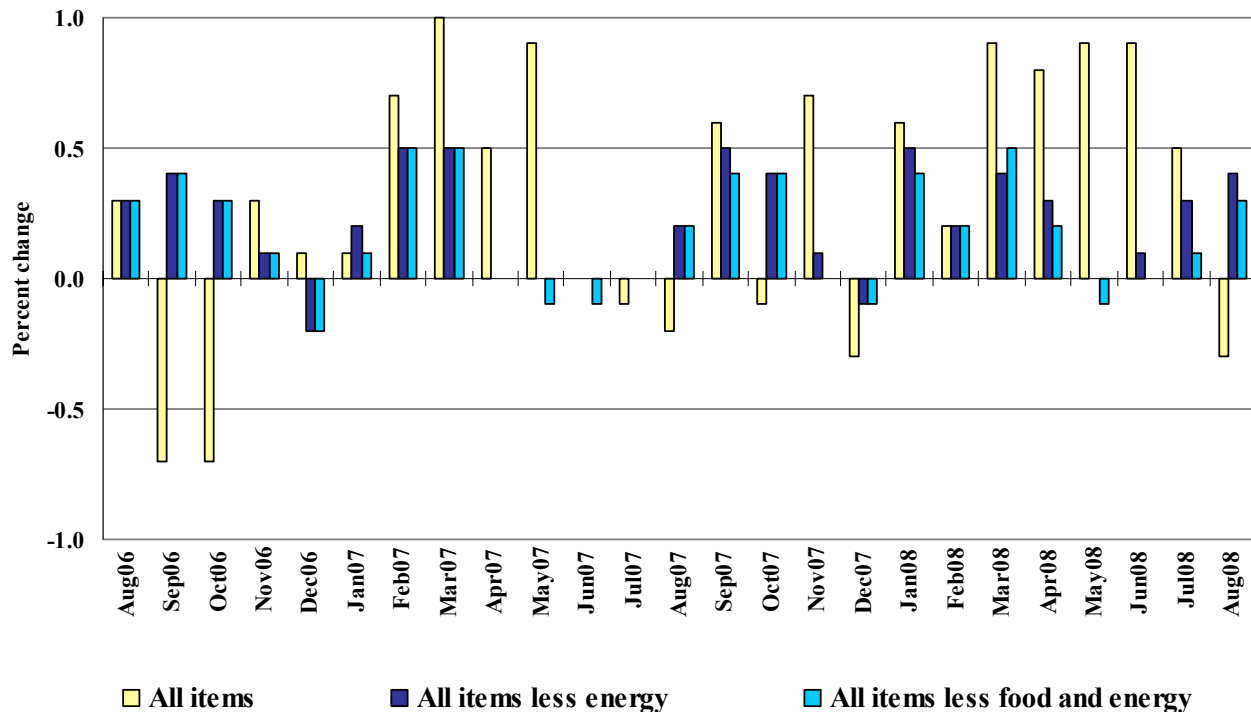
7:30am Central Time

## MIDWEST REGION CONSUMER PRICE INDEX (CPI) – AUGUST 2008

**Prices in the Midwest decreased 0.3 percent over the month and are 5.4 percent higher over the year**

The Consumer Price Index for the Midwest decreased 0.3 percent in August after registering increases in each of the previous seven months. The index was up 5.4 percent from August 2007, the U.S. Department of Labor's Bureau of Labor Statistics reported today. According to Regional Commissioner Stanley W. Suchman, energy prices, which include prices for motor and household fuels, were down 5.4 percent in August and accounted for nearly two-thirds of the overall monthly decline. Energy prices have advanced 25.8 percent since August 2007. The Midwest CPI for all items less energy was 0.4 percent higher over the month and was up 3.1 percent over the year.

Midwest Region, CPI-U Monthly Percent Change  
August 2006 to August 2008



Among the eight major expenditure categories, lower transportation costs had the largest impact on the overall index in August 2008. The transportation index decreased 2.6 percent over the month, largely attributable to a 7.0 percent decline in motor fuel costs. Prices for new vehicles and for used cars and trucks also declined in August, down 0.6 and 0.3 percent, respectively. Overall, transportation prices have risen 12.1 percent since August 2007 led by an over-the-year increase of 31.8 percent in motor fuel costs. Prices for new vehicles were 0.8 percent lower and prices for used cars and trucks were down 0.7 percent.

Reflecting a downturn in costs for household energy, the housing index decreased 0.5 percent and also had a large downward impact on the overall monthly index for the Midwest. The household fuels and utilities index registered a monthly decline of 2.7 percent in August primarily due to a 6.8 percent drop in utility (piped) gas service costs. Shelter costs and prices for household furnishings and operations registered little or no movement over the month. From August 2007 to August 2008, housing costs increased 3.5 percent in the Midwest. Shelter costs rose 1.2 percent and prices for household fuels and utilities were up 17.1 percent. Within fuels and utilities, electricity prices rose 5.5 percent over the year, and prices for utility (piped) gas service climbed 38.1 percent. Prices for household furnishings and operations rose 2.0 percent over the 12-month period.

Partially countering the declines in costs for transportation and housing, prices for apparel and for food and beverages rose in August. Apparel prices, which typically increase in August as retailers introduce fall merchandise, were up 3.8 percent. Prices for apparel were up 5.4 percent from the previous year.

The food and beverages index rose 0.8 percent in August with prices for food at home up 1.0 percent and prices for food away from home 0.5 percent higher. Prices for alcoholic beverages increased 0.3 percent over the month. From August 2007 to August 2008, prices for food and beverages rose 6.4 percent. Prices for food at home advanced 7.7 percent and prices for food away from home rose 5.5 percent. Alcoholic beverages' prices increased 2.9 percent over the year.

The remaining four major expenditure categories—education and communication, recreation, medical care, and other goods and services—had less impact on the overall monthly index. The education and communication index rose 1.1 percent in August and 3.3 percent over the year. Prices for recreation were up 0.6 percent for the month and were 3.5 percent higher than August 2007. Medical care costs rose a modest 0.2 percent over the month and were up 2.4 percent over the year. Other goods and services prices decreased 0.3 percent in August, but advanced 4.1 percent over the year.

The Midwest Consumer Price Index for All Urban Consumers (CPI-U) stood at 209.351 in August. A typical market basket of goods and services that cost \$100.00 in the 1982-84 base period cost \$209.35 in August 2008. Because regional CPI data are not adjusted for seasonal price variation, consumers and businesses should be cautious in drawing conclusions about long-term retail price trends from short-term changes in the regional indexes.

Consumer Price Index data for September are scheduled for release on Thursday, October 16, 2008, at 7:30 A.M. (CT).

---

Information in this release will be made available to sensory impaired individuals upon request.

Voice phone: 202-691-5200; TDD message referral phone number (Federal Relay Service):

1-800-877-8339.

**Table 1. Consumer Price Index for All Urban Consumers (CPI-U): Indexes and percent changes for selected periods**

**Midwest** (1982-84=100 unless otherwise noted)

Item and Group	Indexes			Percent change from—		
	June 2008	July 2008	Aug. 2008	Aug. 2007	June 2008	July 2008
<b>Expenditure category</b>						
All items .....	208.968	210.071	209.351	5.4	0.2	-0.3
All items (December 1977=100) .....	340.002	341.797	340.625	-	-	-
Food and beverages .....	206.221	208.290	209.866	6.4	1.8	.8
Food .....	205.858	208.043	209.703	6.7	1.9	.8
Food at home .....	202.476	204.951	207.019	7.7	2.2	1.0
Food away from home .....	211.450	213.251	214.363	5.5	1.4	.5
Alcoholic beverages .....	210.030	210.747	211.343	2.9	.6	.3
Housing .....	199.967	201.325	200.243	3.5	.1	-.5
Shelter .....	225.317	225.325	225.008	1.2	-.1	-.1
Rent of primary residence <sup>1</sup> .....	214.994	215.119	215.500	2.0	.2	.2
Owners' equivalent rent of primary residence <sup>1 2</sup> .....	226.451	226.398	226.361	1.2	.0	.0
Fuels and utilities .....	228.371	237.361	230.905	17.1	1.1	-2.7
Household energy .....	207.300	216.521	209.653	19.0	1.1	-3.2
Gas (piped) and electricity <sup>1</sup> .....	213.057	223.044	215.964	18.3	1.4	-3.2
Electricity <sup>1</sup> .....	174.037	176.399	176.306	5.5	1.3	-.1
Utility (piped) gas service <sup>1</sup> .....	281.714	306.581	285.769	38.1	1.4	-6.8
Household furnishings and operations .....	121.370	122.035	122.043	2.0	.6	.0
Apparel .....	108.815	106.538	110.610	5.4	1.6	3.8
Transportation .....	213.465	214.830	209.344	12.1	-1.9	-2.6
Private transportation .....	208.290	209.241	203.665	11.8	-2.2	-2.7
New and used motor vehicles <sup>3</sup> .....	94.380	94.381	94.811	.6	.5	.5
New vehicles .....	130.287	130.011	129.273	-.8	-.8	-.6
New cars and trucks <sup>3 4</sup> .....	91.951	91.754	91.236	-.7	-.8	-.6
New cars <sup>4</sup> .....	129.933	130.562	130.500	1.6	.4	.0
Used cars and trucks .....	137.290	137.169	136.807	-.7	-.4	-.3
Motor fuel .....	353.460	356.561	331.509	31.8	-6.2	-7.0
Gasoline (all types) .....	351.629	354.832	329.824	31.8	-6.2	-7.0
Gasoline, unleaded regular <sup>4</sup> .....	351.473	354.478	329.600	32.2	-6.2	-7.0
Gasoline, unleaded midgrade <sup>4 5</sup> .....	382.214	387.033	358.368	31.3	-6.2	-7.4
Gasoline, unleaded premium <sup>4</sup> .....	340.032	342.794	319.999	30.3	-5.9	-6.6
Medical care .....	360.549	360.652	361.277	2.4	.2	.2
Medical care commodities .....	289.459	288.927	290.348	-.3	.3	.5
Medical care services .....	384.195	384.572	384.838	3.3	.2	.1
Professional services .....	329.522	329.555	329.199	3.0	-.1	-.1
Recreation <sup>3</sup> .....	114.233	114.669	115.353	3.5	1.0	.6
Education and communication <sup>3</sup> .....	124.554	124.922	126.263	3.3	1.4	1.1
Other goods and services .....	334.655	336.042	334.948	4.1	.1	-.3
<b>Commodity and service group</b>						
All items .....	208.968	210.071	209.351	5.4	.2	-.3
Commodities .....	175.633	176.363	175.181	7.6	-.3	-.7
Commodities less food and beverages .....	158.890	159.028	156.687	8.2	-1.4	-1.5
Nondurables less food and beverages .....	208.950	209.180	204.675	13.8	-2.0	-2.2
Nondurables less food, beverages, and apparel .....	273.899	275.739	265.716	16.3	-3.0	-3.6
Durables .....	109.568	109.619	109.288	.1	-.3	-.3
Services .....	243.720	245.216	244.983	3.9	.5	-.1
Rent of shelter <sup>2</sup> .....	231.660	231.661	231.331	1.2	-.1	-.1
Transportation services .....	250.895	253.715	256.221	6.7	2.1	1.0
Other services .....	287.099	287.999	290.333	3.8	1.1	.8

See footnotes at end of table.

**Table1. Consumer Price Index for All Urban Consumers (CPI-U): Indexes and percent changes for selected periods-Continued**

**Midwest** (1982-84=100 unless otherwise noted)

Item and Group	Indexes			Percent change from—		
	June 2008	July 2008	Aug. 2008	Aug. 2007	June 2008	July 2008
<b>Special aggregate indexes</b>						
All items less medical care .....	201.500	202.637	201.867	5.7	0.2	-0.4
All items less food .....	209.416	210.336	209.215	5.2	-.1	-.5
All items less shelter .....	205.261	206.778	205.902	7.2	.3	-.4
Commodities less food .....	160.656	160.813	158.567	8.0	-1.3	-1.4
Nondurables .....	208.623	209.727	208.085	10.1	-.3	-.8
Nondurables less food .....	208.686	208.948	204.786	13.0	-1.9	-2.0
Nondurables less food and apparel .....	266.432	268.150	259.260	15.0	-2.7	-3.3
Services less rent of shelter <sup>2</sup> .....	270.866	274.186	274.054	6.7	1.2	.0
Services less medical care services .....	232.557	234.102	233.842	4.0	.6	-.1
Energy .....	271.353	277.788	262.842	25.8	-3.1	-5.4
All items less energy .....	204.446	204.980	205.802	3.1	.7	.4
All items less food and energy .....	204.806	205.022	205.685	2.4	.4	.3
Commodities less food and energy commodities .....	138.049	137.820	138.621	1.8	.4	.6
Energy commodities .....	352.290	355.244	330.744	31.9	-6.1	-6.9
Services less energy services .....	248.437	248.977	249.519	2.7	.4	.2

<sup>1</sup> This index series was calculated using a Laspeyres estimator. All other item stratum index series were calculated using a geometric means estimator.

<sup>2</sup> Index is on a December 1982=100 base.

<sup>3</sup> Indexes on a December 1997=100 base.

<sup>4</sup> Special index based on a substantially smaller sample.

<sup>5</sup> Indexes on a December 1993=100 base.

- Data not available.

Regions defined as the four Census regions. Midwest includes Illinois, Indiana, Iowa, Kansas, Michigan, Minnesota, Missouri, Nebraska, North Dakota, Ohio, South Dakota, and Wisconsin.

NOTE: Index applies to a month as a whole, not to any specific date.

**Table 2. Consumer Price Index for Urban Wage Earners and Clerical Workers (CPI-W): Indexes and percent changes for selected periods**

**Midwest** (1982-84=100 unless otherwise noted)

Item and Group	Indexes			Percent change from—		
	June 2008	July 2008	Aug. 2008	Aug. 2007	June 2008	July 2008
<b>Expenditure category</b>						
All items .....	204.867	206.038	205.121	5.9	0.1	-0.4
All items (December 1977=100) .....	331.316	333.210	331.726	-	-	-
Food and beverages .....	206.185	208.404	209.987	6.4	1.8	.8
Food .....	205.893	208.238	209.895	6.7	1.9	.8
Food at home .....	202.556	205.221	207.180	7.4	2.3	1.0
Food away from home .....	211.687	213.571	214.794	5.7	1.5	.6
Alcoholic beverages .....	209.546	210.111	210.704	3.0	.6	.3
Housing .....	194.303	195.867	194.801	4.0	.3	-.5
Shelter .....	214.002	213.993	213.848	1.4	-.1	-.1
Rent of primary residence <sup>1</sup> .....	215.395	215.542	215.904	2.0	.2	.2
Owners' equivalent rent of primary residence <sup>1 2</sup> .....	210.807	210.780	210.738	1.3	.0	.0
Fuels and utilities .....	228.655	237.883	231.454	17.3	1.2	-2.7
Household energy .....	206.640	215.992	209.249	19.1	1.3	-3.1
Gas (piped) and electricity <sup>1</sup> .....	211.484	221.495	214.493	18.3	1.4	-3.2
Electricity <sup>1</sup> .....	173.946	176.369	176.334	5.7	1.4	.0
Utility (piped) gas service <sup>1</sup> .....	281.575	306.842	285.757	37.9	1.5	-6.9
Household furnishings and operations .....	118.251	119.184	119.250	1.8	.8	.1
Apparel .....	107.050	104.741	109.090	5.1	1.9	4.2
Transportation .....	215.373	216.569	210.358	12.4	-2.3	-2.9
Private transportation .....	212.147	213.126	206.852	12.3	-2.5	-2.9
New and used motor vehicles <sup>3</sup> .....	94.038	93.974	94.096	.4	.1	.1
New vehicles .....	133.567	133.237	132.409	-.5	-.9	-.6
Used cars and trucks .....	138.480	138.375	138.023	-.6	-.3	-.3
Motor fuel .....	354.263	357.525	332.382	31.8	-6.2	-7.0
Gasoline (all types) .....	352.357	355.729	330.668	31.8	-6.2	-7.0
Gasoline, unleaded regular <sup>4</sup> .....	351.982	355.161	330.270	32.2	-6.2	-7.0
Gasoline, unleaded midgrade <sup>4 5</sup> .....	381.863	386.816	358.077	31.2	-6.2	-7.4
Gasoline, unleaded premium <sup>4</sup> .....	339.777	342.608	319.925	30.2	-5.8	-6.6
Medical care .....	362.422	362.541	363.322	2.4	.2	.2
Medical care commodities .....	283.264	282.792	284.415	-.1	.4	.6
Medical care services .....	387.094	387.478	387.853	3.3	.2	.1
Professional services .....	330.403	330.501	330.143	3.0	-.1	-.1
Recreation <sup>3</sup> .....	110.575	111.024	111.666	3.1	1.0	.6
Education and communication <sup>3</sup> .....	121.200	121.480	122.730	3.1	1.3	1.0
Other goods and services .....	349.058	350.506	349.666	5.0	.2	-.2
<b>Commodity and service group</b>						
All items .....	204.867	206.038	205.121	5.9	.1	-.4
Commodities .....	178.396	179.243	177.795	8.1	-.3	-.8
Commodities less food and beverages .....	163.390	163.625	160.883	9.1	-1.5	-1.7
Nondurables less food and beverages .....	220.015	220.432	215.124	15.0	-2.2	-2.4
Nondurables less food, beverages, and apparel .....	289.682	291.845	280.400	17.8	-3.2	-3.9
Durables .....	109.225	109.290	108.952	-.1	-.2	-.3
Services .....	237.358	238.916	238.607	4.1	.5	-.1
Rent of shelter <sup>2</sup> .....	212.713	212.699	212.554	1.4	-.1	-.1
Transportation services .....	245.747	247.809	249.893	5.6	1.7	.8
Other services .....	270.760	271.509	273.676	3.7	1.1	.8
<b>Special aggregate indexes</b>						
All items less medical care .....	198.481	199.677	198.713	6.1	.1	-.5
All items less food .....	204.423	205.381	204.002	5.8	-.2	-.7

See footnotes at end of table.

**Table 2. Consumer Price Index for Urban Wage Earners and Clerical Workers (CPI-W): Indexes and percent changes for selected periods-Continued**

**Midwest** (1982-84=100 unless otherwise noted)

Item and Group	Indexes			Percent change from—		
	June 2008	July 2008	Aug. 2008	Aug. 2007	June 2008	July 2008
<b>Special aggregate indexes</b>						
All items less shelter .....	204.060	205.660	204.459	7.7	0.2	-0.6
Commodities less food .....	164.972	165.217	162.571	8.9	-1.5	-1.6
Nondurables .....	214.422	215.698	213.644	10.8	-.4	-1.0
Nondurables less food .....	219.231	219.656	214.705	14.2	-2.1	-2.3
Nondurables less food and apparel .....	280.993	282.998	272.727	16.6	-2.9	-3.6
Services less rent of shelter <sup>2</sup> .....	242.324	245.518	245.054	6.9	1.1	-.2
Services less medical care services .....	226.624	228.216	227.879	4.1	.6	-.1
Energy .....	273.661	280.093	264.831	26.1	-3.2	-5.4
All items less energy .....	197.680	198.197	199.080	3.1	.7	.4
All items less food and energy .....	196.255	196.390	197.112	2.4	.4	.4
Commodities less food and energy commodities .....	138.136	137.906	138.786	1.9	.5	.6
Energy commodities .....	353.561	356.751	332.167	32.0	-6.1	-6.9
Services less energy services .....	240.728	241.154	241.741	2.6	.4	.2

<sup>1</sup> This index series was calculated using a Laspeyres estimator. All other item stratum index series were calculated using a geometric means estimator.

<sup>2</sup> Index is on a December 1984=100 base.

<sup>3</sup> Indexes on a December 1997=100 base.

<sup>4</sup> Special index based on a substantially smaller sample.

<sup>5</sup> Indexes on a December 1993=100 base.

- Data not available.

Regions defined as the four Census regions. Midwest includes Illinois, Indiana, Iowa, Kansas, Michigan, Minnesota, Missouri, Nebraska, North Dakota, Ohio, South Dakota, and Wisconsin.

NOTE: Index applies to a month as a whole, not to any specific date.

**Table 3. Consumer Price Index for All Urban Consumers (CPI-U): Selected areas, all items index**

(1982-84=100, unless otherwise noted)

Area	All items										
	Pricing schedule 1	Indexes				Percent change to Aug. 2008 from—			Percent change to July 2008 from—		
		May 2008	June 2008	July 2008	Aug. 2008	Aug. 2007	June 2008	July 2008	July 2007	May 2008	June 2008
U.S. city average .....	M	216.632	218.815	219.964	219.086	5.4	0.1	-0.4	5.6	1.5	0.5
<b>Region and area size<sup>2</sup></b>											
Northeast urban .....	M	230.089	232.649	234.545	233.788	5.5	.5	-.3	5.7	1.9	.8
Size A - More than 1,500,000 .....	M	232.005	234.518	236.460	236.107	5.3	.7	-.1	5.5	1.9	.8
Size B/C - 50,000 to 1,500,000 <sup>3</sup> .....	M	136.913	138.542	139.623	138.537	6.1	.0	-.8	6.3	2.0	.8
Midwest urban .....	M	207.168	208.968	210.071	209.351	5.4	.2	-.3	5.6	1.4	.5
Size A - More than 1,500,000 .....	M	208.291	209.813	211.003	210.341	5.3	.3	-.3	5.3	1.3	.6
Size B/C - 50,000 to 1,500,000 <sup>3</sup> .....	M	132.682	134.018	134.595	133.969	5.6	.0	-.5	5.9	1.4	.4
Size D - Nonmetropolitan (less than 50,000) .....	M	202.720	205.122	206.435	206.251	5.9	.6	-.1	6.0	1.8	.6
South urban .....	M	210.006	212.324	213.304	212.387	5.6	.0	-.4	5.8	1.6	.5
Size A - More than 1,500,000 .....	M	211.846	214.359	215.373	214.496	5.4	.1	-.4	5.6	1.7	.5
Size B/C - 50,000 to 1,500,000 <sup>3</sup> .....	M	133.714	134.980	135.643	135.004	5.6	.0	-.5	5.8	1.4	.5
Size D - Nonmetropolitan (less than 50,000) .....	M	211.225	214.739	215.274	214.655	6.9	.0	-.3	6.8	1.9	.2
West urban .....	M	221.009	223.040	223.867	222.823	4.9	-.1	-.5	5.3	1.3	.4
Size A - More than 1,500,000 .....	M	224.704	226.767	227.562	226.541	5.0	-.1	-.4	5.4	1.3	.4
Size B/C - 50,000 to 1,500,000 <sup>3</sup> .....	M	134.023	135.283	136.021	135.207	4.9	-.1	-.6	5.4	1.5	.5
<b>Size classes</b>											
A <sup>4</sup> .....	M	197.898	199.840	200.941	200.278	5.2	.2	-.3	5.4	1.5	.6
B/C <sup>3</sup> .....	M	133.997	135.330	136.055	135.315	5.5	.0	-.5	5.8	1.5	.5
D .....	M	209.308	211.989	212.555	212.138	5.9	.1	-.2	5.8	1.6	.3
<b>Selected local areas<sup>5</sup></b>											
Chicago-Gary-Kenosha, IL-IN-WI .....	M	214.932	215.738	217.459	215.971	4.9	.1	-.7	5.8	1.2	.8
Los Angeles-Riverside-Orange County, CA ...	M	226.651	229.033	229.886	228.484	5.1	-.2	-.6	5.7	1.4	.4
New York-Northern N.J.-Long Island, NY-NJ-CT-PA .....	M	236.151	238.580	240.273	240.550	5.4	.8	.1	5.1	1.7	.7
Boston-Brockton-Nashua, MA-NH-ME-CT .....	1	235.344	-	241.258	-	-	-	-	6.3	2.5	-
Cleveland-Akron, OH .....	1	204.882	-	206.941	-	-	-	-	5.0	1.0	-
Dallas-Fort Worth, TX .....	1	202.357	-	206.413	-	-	-	-	6.2	2.0	-
Washington-Baltimore, DC-MD-VA-WV <sup>6</sup> .....	1	139.649	-	142.065	-	-	-	-	5.7	1.7	-
Atlanta, GA .....	2	-	212.032	-	211.404	5.0	-.3	-	-	-	-
Detroit-Ann Arbor-Flint, MI .....	2	-	207.593	-	209.484	4.9	.9	-	-	-	-
Houston-Galveston-Brazoria, TX .....	2	-	193.567	-	192.723	4.9	-.4	-	-	-	-
Miami-Fort Lauderdale, FL .....	2	-	225.079	-	225.473	5.8	.2	-	-	-	-
Philadelphia-Wilmington-Atlantic City, PA-NJ-DE-MD .....	2	-	228.408	-	228.337	4.4	.0	-	-	-	-
San Francisco-Oakland-San Jose, CA .....	2	-	225.181	-	225.411	4.2	.1	-	-	-	-
Seattle-Tacoma-Bremerton, WA .....	2	-	228.068	-	227.745	5.4	-.1	-	-	-	-

<sup>1</sup> Foods, fuels, and several other items priced every month in all areas; most other goods and services priced as indicated:

- M - Every month.
- 1 - January, March, May, July, September, and November.
- 2 - February, April, June, August, October, and December.

<sup>2</sup> Regions defined as the four Census regions.

<sup>3</sup> Indexes on a December 1996=100 base.

<sup>4</sup> Indexes on a December 1986=100 base.

<sup>5</sup> In addition, the following metropolitan areas are published semiannually and appear in Tables 34 and 39 of the January and July issues of the CPI Detailed Report: Anchorage, AK; Cincinnati-Hamilton, OH-KY-IN; Denver-Boulder-Greeley, CO; Honolulu, HI; Kansas City, MO-KS; Milwaukee-Racine, WI; Minneapolis-St. Paul, MN-WI; Phoenix-Mesa, AZ;

Pittsburgh, PA; Portland-Salem, OR-WA; St. Louis, MO-IL; San Diego, CA; Tampa-St. Petersburg-Clearwater, FL.

<sup>6</sup> Indexes on a November 1996=100 base.  
- Data not available.

NOTE: Local area indexes are byproducts of the national CPI program. Each local index has a smaller sample size than the national index and is, therefore, subject to substantially more sampling and other measurement error. As a result, local area indexes show greater volatility than the national index, although their long-term trends are similar. Therefore, the Bureau of Labor Statistics strongly urges users to consider adopting the national average CPI for use in their escalator clauses.

NOTE: Index applies to a month as a whole, not to any specific date.

**Table 4. Consumer Price Index for All Urban Consumers (CPI-U): Regions<sup>1</sup>, by expenditure category and commodity and service group**

(1982-84=100, unless otherwise noted)

Item and group	Northeast			Midwest			South			West		
	Index	Percent change from—		Index	Percent change from—		Index	Percent change from—		Index	Percent change from—	
		Aug. 2008	Aug. 2007		July 2008	Aug. 2008		Aug. 2007	July 2008		Aug. 2008	Aug. 2007
<b>Expenditure category</b>												
All items .....	233.788	5.5	-0.3	209.351	5.4	-0.3	212.387	5.6	-0.4	222.823	4.9	-0.5
All items (December 1977=100) .....	368.145	-	-	340.625	-	-	344.521	-	-	360.181	-	-
Food and beverages .....	220.693	5.7	.6	209.866	6.4	.8	213.936	6.2	.6	221.506	5.3	.2
Food .....	220.373	5.8	.6	209.703	6.7	.8	214.720	6.5	.5	221.063	5.5	.2
Food at home .....	221.916	7.3	1.0	207.019	7.7	1.0	213.761	7.9	.7	227.153	6.9	.2
Food away from home .....	221.490	3.9	.2	214.363	5.5	.5	219.336	4.7	.4	212.342	3.8	.2
Alcoholic beverages .....	223.754	4.9	.4	211.343	2.9	.3	201.936	2.7	.8	225.552	2.8	-.2
Housing .....	247.506	4.5	-.4	200.243	3.5	-.5	203.177	4.3	.0	228.814	3.0	.0
Shelter .....	288.753	2.1	-.3	225.008	1.2	-.1	221.549	3.0	.0	255.593	2.8	.1
Rent of primary residence <sup>2</sup> .....	276.510	4.4	.4	215.500	2.0	.2	220.161	4.0	.5	255.857	3.9	.2
Owners' equivalent rent of primary residence <sup>2 3</sup> .....	294.241	1.9	.1	226.361	1.2	.0	223.382	3.1	.3	267.752	3.2	.2
Fuels and utilities .....	251.685	22.1	-1.5	230.905	17.1	-2.7	234.735	14.3	-.4	238.144	7.8	-1.6
Household energy .....	240.427	24.0	-1.8	209.653	19.0	-3.2	208.740	16.0	-.9	226.527	8.6	-2.4
Gas (piped) and electricity <sup>2</sup> .....	231.892	16.5	.3	215.964	18.3	-3.2	208.618	15.0	-.7	227.545	7.7	-2.3
Electricity <sup>2</sup> .....	209.483	12.2	2.8	176.306	5.5	-.1	194.855	11.8	.7	226.719	3.9	.0
Utility (piped) gas service <sup>2</sup> .....	272.050	24.4	-4.3	285.769	38.1	-6.8	282.007	31.5	-7.0	250.776	18.1	-7.8
Household furnishings and operations .....	128.708	.3	.2	122.043	2.0	.0	127.379	1.3	.0	134.122	1.0	.3
Apparel .....	115.467	1.3	3.3	110.610	5.4	3.8	127.809	2.0	.6	108.777	-.8	.3
Transportation .....	203.979	11.5	-2.6	209.344	12.1	-2.6	205.229	12.1	-3.3	208.298	12.4	-2.8
Private transportation .....	197.550	11.4	-2.9	203.665	11.8	-2.7	203.327	11.9	-3.4	201.618	12.1	-2.9
New and used motor vehicles <sup>4</sup> .....	92.342	-.1	-.9	94.811	.6	.5	93.026	-2.2	-.8	93.047	-1.1	-.3
New vehicles .....	133.435	-.3	-.8	129.273	-.8	-.6	136.478	-2.4	-1.1	133.072	-1.2	-.4
New cars and trucks <sup>4 5</sup> .....	92.474	-.3	-.8	91.236	-.7	-.6	92.833	-2.4	-1.1	92.520	-1.2	-.4
New cars <sup>5</sup> .....	132.564	-.2	-.9	130.500	1.6	.0	140.955	-.9	-.3	136.451	1.7	.3
Used cars and trucks .....	140.617	-1.0	-.2	136.807	-.7	-.3	133.932	-1.9	-.4	133.153	-1.1	-.3
Motor fuel .....	314.987	35.1	-7.1	331.509	31.8	-7.0	321.692	35.8	-7.5	325.719	40.6	-7.8
Gasoline (all types) .....	312.446	34.8	-7.1	329.824	31.8	-7.0	318.729	35.3	-7.6	323.707	40.4	-7.8
Gasoline, unleaded regular <sup>5</sup> .....	315.178	35.3	-7.4	329.600	32.2	-7.0	319.250	35.6	-7.7	323.909	41.2	-7.9
Gasoline, unleaded midgrade <sup>5 6</sup> .....	316.706	34.3	-6.6	358.368	31.3	-7.4	329.520	34.8	-7.3	301.628	38.9	-7.7
Gasoline, unleaded premium <sup>5</sup> .....	299.123	32.8	-6.5	319.999	30.3	-6.6	310.243	34.0	-7.1	305.000	38.0	-7.7
Medical care .....	388.040	3.3	.0	361.277	2.4	.2	348.195	3.6	.2	369.557	3.6	.1
Medical care commodities .....	318.709	2.7	-.3	290.348	-.3	.5	282.705	1.4	-.1	298.723	1.5	.3
Medical care services .....	406.451	3.4	.0	384.838	3.3	.1	369.851	4.4	.4	390.964	4.3	.1
Professional services .....	318.928	3.1	.1	329.199	3.0	-.1	309.624	3.5	.3	293.323	3.6	.2
Recreation <sup>4</sup> .....	116.027	2.5	.1	115.353	3.5	.6	114.541	2.4	.9	109.664	1.4	.1
Education and communication <sup>4</sup> .....	128.371	5.1	1.3	126.263	3.3	1.1	120.754	3.0	.9	124.122	3.4	.7
Other goods and services .....	373.378	5.3	.0	334.948	4.1	-.3	333.652	3.7	.2	348.239	3.7	.3
<b>Commodity and service group</b>												
All items .....	233.788	5.5	-.3	209.351	5.4	-.3	212.387	5.6	-.4	222.823	4.9	-.5
Commodities .....	184.282	8.0	-.9	175.181	7.6	-.7	180.273	7.3	-1.3	177.335	6.6	-1.3
Commodities less food and beverages .....	161.346	9.5	-1.8	156.687	8.2	-1.5	162.118	7.9	-2.3	152.663	7.3	-2.0
Nondurables less food and beverages .....	207.674	16.1	-2.5	204.675	13.8	-2.2	215.540	14.8	-3.2	199.217	14.9	-3.2
Nondurables less food, beverages, and apparel .....	278.847	21.4	-4.1	265.716	16.3	-3.6	269.079	18.8	-4.2	262.284	20.1	-4.1
Durables .....	109.305	-1.0	-.4	109.288	.1	-.3	112.755	-1.7	-.6	111.264	-1.5	-.4
Services .....	282.261	4.0	.0	244.983	3.9	-.1	245.288	4.4	.2	263.842	3.8	.1
Rent of shelter <sup>3</sup> .....	302.056	2.1	-.3	231.331	1.2	-.1	227.879	3.0	.0	271.961	2.8	.1
Transportation services .....	235.198	5.5	.2	256.221	6.7	1.0	253.474	5.6	.2	253.395	6.5	.2
Other services .....	318.651	4.6	.7	290.333	3.8	.8	287.892	3.6	1.0	294.607	4.1	.5

See footnotes at end of table.



**Table 4. Consumer Price Index for All Urban Consumers (CPI-U): Regions<sup>1</sup>, by expenditure category and commodity and service group-Continued**

(1982-84=100, unless otherwise noted)

Item and group	Northeast			Midwest			South			West		
	Index	Percent change from—		Index	Percent change from—		Index	Percent change from—		Index	Percent change from—	
		Aug. 2008	Aug. 2007		July 2008	Aug. 2008		Aug. 2007	July 2008		Aug. 2008	Aug. 2007
<b>Special aggregate indexes</b>												
All items less medical care .....	226.709	5.7	-0.3	201.867	5.7	-0.4	204.246	5.8	-0.5	215.649	5.0	-0.5
All items less food .....	236.435	5.5	-.5	209.215	5.2	-.5	211.866	5.5	-.6	223.246	4.8	-.6
All items less shelter .....	215.519	7.4	-.4	205.902	7.2	-.4	210.109	6.9	-.6	210.876	6.0	-.8
Commodities less food .....	163.876	9.2	-1.7	158.567	8.0	-1.4	163.562	7.7	-2.2	155.722	7.1	-1.9
Nondurables .....	215.290	10.7	-1.0	208.085	10.1	-.8	215.400	10.6	-1.5	212.116	10.0	-1.6
Nondurables less food .....	208.488	15.3	-2.3	204.786	13.0	-2.0	214.626	14.1	-3.0	201.685	14.0	-3.0
Nondurables less food and apparel .....	271.208	19.8	-3.8	259.260	15.0	-3.3	262.158	17.6	-3.9	258.090	18.4	-3.8
Services less rent of shelter <sup>3</sup> .....	285.197	6.4	.4	274.054	6.7	.0	274.654	6.2	.4	282.958	5.2	.0
Services less medical care services .....	273.077	4.0	.0	233.842	4.0	-.1	232.938	4.4	.2	254.339	3.7	.1
Energy .....	271.624	29.1	-4.5	262.842	25.8	-5.4	255.247	26.6	-4.9	286.478	28.0	-6.1
All items less energy .....	231.869	3.1	.2	205.802	3.1	.4	208.001	3.2	.2	219.557	2.9	.2
All items less food and energy .....	235.402	2.6	.2	205.685	2.4	.3	207.182	2.6	.2	219.959	2.5	.2
Commodities less food and energy commodities .....	142.472	1.2	.5	138.621	1.8	.6	141.901	.3	-.1	136.156	-.2	.0
Energy commodities .....	330.002	39.0	-7.4	330.744	31.9	-6.9	325.832	36.1	-7.5	329.118	40.5	-7.7
Services less energy services .....	287.320	3.1	.0	249.519	2.7	.2	248.742	3.6	.3	266.833	3.6	.2

<sup>1</sup> Regions defined as the four Census regions.

<sup>2</sup> This index series was calculated using a Laspeyres estimator. All other item stratum index series were calculated using a geometric means estimator.

<sup>3</sup> Indexes on a December 1982=100 base.

<sup>4</sup> Indexes on a December 1997=100 base.

<sup>5</sup> Special index based on a substantially smaller sample.

<sup>6</sup> Indexes on a December 1993=100 base.

- Data not available.

NOTE: Index applies to a month as a whole, not to any specific date.