

# Comparison of Black Carp and Grass Carp

Duane Chapman, James Candrl, and Ning Wang

USGS Columbia Environmental Research Center





# Black Carp



Mouth more subterminal and  
operculum longer than grass carp

# Grass Carp





Note more rounded snout and shorter pectoral fins on grass carp (L) than on black carp (R).





Grass Carp

First anal fin rays shorter than or same length as middle anal fin rays



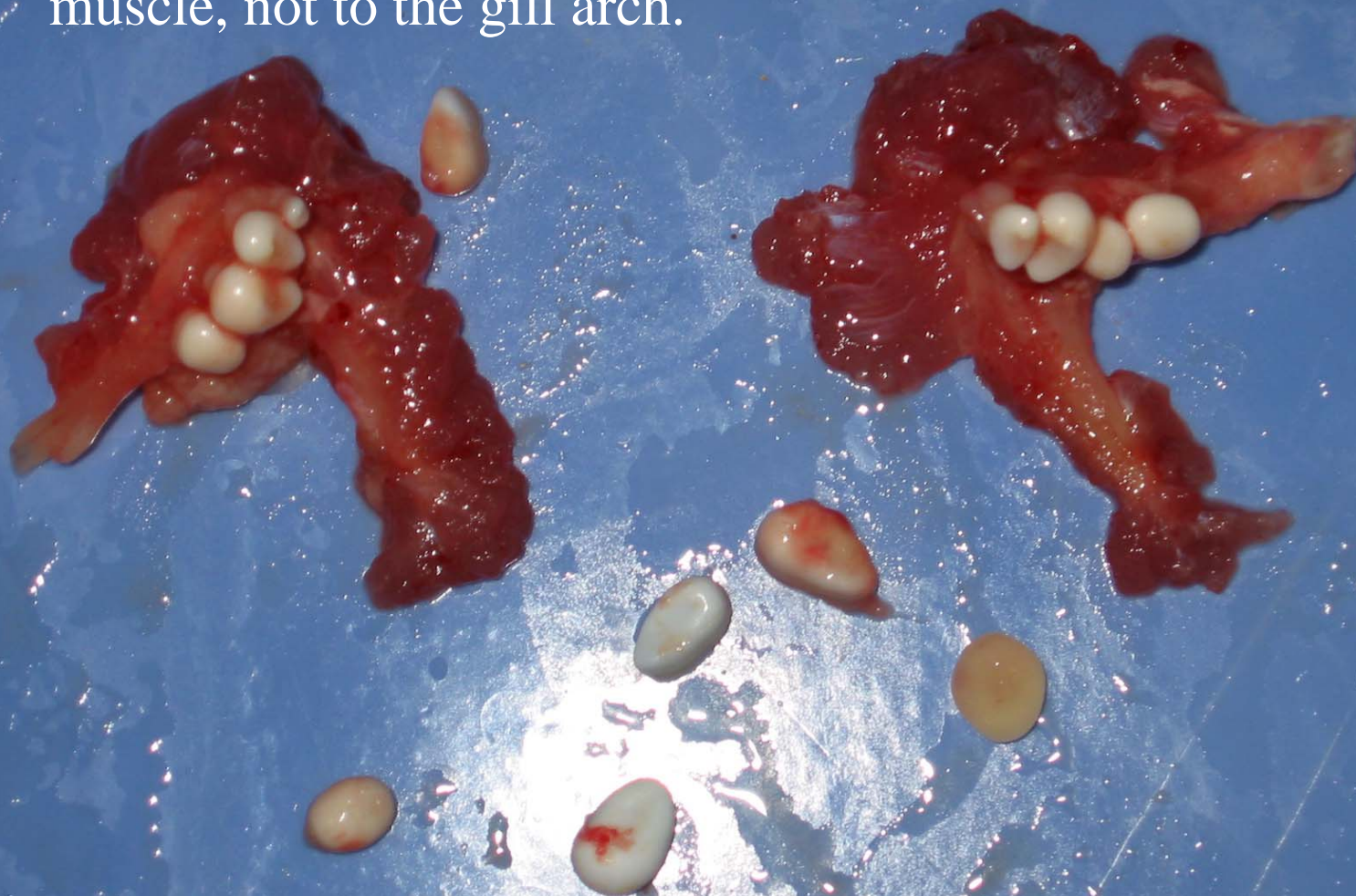
Black Carp

First anal fin rays longer





Pharyngeal gill teeth from Black Carp. Note the “floating teeth” that are attached only to muscle, not to the gill arch.





Grass carp

Black carp

Can see upper lip of grass carp from dorsal view when mouth is closed

