

Table XXVII-1
URINARY BLADDER CANCER (Invasive and In Situ)

TRENDS IN SEER INCIDENCE^a AND U.S. MORTALITY^b USING THE JOINPOINT REGRESSION PROGRAM, 1975-2005
WITH UP TO THREE JOINPOINTS BY RACE AND SEX

		<u>Joinpoint Trend 1</u>		<u>Joinpoint Trend 2</u>		<u>Joinpoint Trend 3</u>		<u>Joinpoint Trend 4</u>		<u>AAPC^c</u>	
		<u>Years</u>	<u>APC</u>	<u>Years</u>	<u>APC</u>	<u>Years</u>	<u>APC</u>	<u>Years</u>	<u>APC</u>	<u>1996-2005</u>	<u>2001-2005</u>
<u>SEER Cancer Incidence^a</u>											
All Races	Both Sexes	1975-1987	0.8*	1987-1996	-0.2	1996-1999	1.5	1999-2005	-0.6	0.1	-0.6*
All Races	Male	1975-1987	1.0*	1987-1996	-0.5*	1996-1999	1.8	1999-2005	-0.7*	0.1	-0.7*
All Races	Female	1975-2005	0.1*							0.1*	0.1*
White	Both Sexes	1975-1987	1.0*	1987-1996	-0.1	1996-1999	1.7	1999-2005	-0.4	0.3	-0.4
White	Male	1975-1987	1.2*	1987-1995	-0.6	1995-1999	1.3	1999-2005	-0.6	0.1	-0.6
White	Female	1975-2005	0.3*							0.3*	0.3*
Black	Both Sexes	1975-2005	0.2							0.2	0.2
Black	Male	1975-2005	0.2							0.2	0.2
Black	Female	1975-2005	0.4							0.4	0.4
<u>SEER Delay-Adjusted Incidence^a</u>											
All Races	Both Sexes	1975-1986	0.7*	1986-2005	0.2*					0.2*	0.2*
All Races	Male	1975-1986	0.9*	1986-2005	0.0					0.0	0.0
All Races	Female	1975-2005	0.2*							0.2*	0.2*
White	Both Sexes	1975-1987	1.0*	1987-1996	0.0	1996-1999	1.7	1999-2005	0.0	0.6	0.0
White	Male	1975-1987	1.2*	1987-1994	-0.4	1994-2005	0.4*			0.4*	0.4*
White	Female	1975-2005	0.4*							0.4*	0.4*
Black	Both Sexes	1975-2005	0.3*							0.3*	0.3*
Black	Male	1975-2005	0.3							0.3	0.3
Black	Female	1975-2005	0.6*							0.6*	0.6*
<u>U.S. Cancer Mortality^b</u>											
All Races	Both Sexes	1975-1977	0.0	1977-1987	-2.1*	1987-2005	-0.2*			-0.2*	-0.2*
All Races	Male	1975-1987	-1.8*	1987-2005	-0.4*					-0.4*	-0.4*
All Races	Female	1975-1986	-1.7*	1986-2005	-0.4*					-0.4*	-0.4*
White	Both Sexes	1975-1977	0.1	1977-1987	-2.2*	1987-2005	0.0			0.0	0.0
White	Male	1975-1988	-1.7*	1988-2005	-0.2*					-0.2*	-0.2*
White	Female	1975-1986	-1.8*	1986-2005	-0.3*					-0.3*	-0.3*
Black	Both Sexes	1975-2005	-1.1*							-1.1*	-1.1*
Black	Male	1975-2005	-1.1*							-1.1*	-1.1*
Black	Female	1975-2005	-0.9*							-0.9*	-0.9*

Joinpoint Regression Program Version 3.3.1, April 2008, National Cancer Institute. (<http://srab.cancer.gov/joinpoint/>).
 The APC is the Annual Percent Change based on rates age-adjusted to the 2000 US Std Population (19 age groups - Census P25-1130).
 Trends are from the SEER 9 areas (San Francisco, Connecticut, Detroit, Hawaii, Iowa, New Mexico, Seattle, Utah, and Atlanta).
 Trends are from US Mortality Files, National Center for Health Statistics, Centers for Disease Control and Prevention.
 The AAPC is the Average Annual Percent Change and is based on the APCs calculated by Joinpoint over the time range of 1975-2005.
 The APC/AAPC is significantly different from zero ($p < .05$).

a
b
c
*

Table XXVII-1a
URINARY BLADDER CANCER (Invasive and *In Situ*)

TRENDS IN SEER INCIDENCE^a AND U.S. MORTALITY^b USING THE JOINTPOINT REGRESSION PROGRAM, 1975-2005
WITH UP TO FOUR JOINTPOINTS BY RACE AND SEX

		Joinpoint Trend 1		Joinpoint Trend 2		Joinpoint Trend 3		Joinpoint Trend 4		Joinpoint Trend 5		AAPC ^c
		Years	APC	Years	APC	Years	APC	Years	APC	Years	APC	2001-2005
<u>SEER Cancer Incidence^a</u>												
All Races	Both Sexes	1975-1987	0.8*	1987-1996	-0.2	1996-1999	1.5	1999-2005	-0.6			-0.6*
All Races	Male	1975-1987	0.9*	1987-2005	-0.1							-0.1
All Races	Female	1975-2005	0.1*									0.1*
White	Both Sexes	1975-1987	1.0*	1987-1996	-0.1	1996-1999	1.7	1999-2005	-0.4			-0.4
White	Male	1975-1987	1.1*	1987-2005	0.0							0.0
White	Female	1975-2005	0.3*									0.3*
Black	Both Sexes	1975-2005	0.2									0.2
Black	Male	1975-2005	0.2									0.2
Black	Female	1975-2005	0.4									0.4
<u>SEER Delay-Adjusted Incidence^a</u>												
All Races	Both Sexes	1975-1986	0.7*	1986-2005	0.2*							0.2*
All Races	Male	1975-1986	0.9*	1986-2005	0.0							0.0
All Races	Female	1975-2005	0.2*									0.2*
White	Both Sexes	1975-1987	1.0*	1987-1996	0.0	1996-1999	1.7	1999-2005	0.0			0.0
White	Male	1975-1987	1.0*	1987-2005	0.1							0.1
White	Female	1975-2005	0.4*									0.4*
Black	Both Sexes	1975-2005	0.3*									0.3*
Black	Male	1975-2005	0.3									0.3
Black	Female	1975-2005	0.6*									0.6*
<u>U.S. Cancer Mortality^b</u>												
All Races	Both Sexes	1975-1977	0.0	1977-1987	-2.1*	1987-2005	-0.2*					-0.2*
All Races	Male	1975-1983	-1.4*	1983-1987	-2.7*	1987-1993	0.1	1993-2003	-0.7*	2003-2005	1.1	0.2
All Races	Female	1975-1986	-1.7*	1986-2005	-0.4*							-0.4*
White	Both Sexes	1975-1977	0.1	1977-1987	-2.2*	1987-2005	0.0					0.0
White	Male	1975-1983	-1.4*	1983-1987	-2.7*	1987-1993	0.1	1993-2003	-0.5*	2003-2005	1.2	0.3
White	Female	1975-1986	-1.8*	1986-2005	-0.3*							-0.3*
Black	Both Sexes	1975-2005	-1.1*									-1.1*
Black	Male	1975-2005	-1.1*									-1.1*
Black	Female	1975-2005	-0.9*									-0.9*

Joinpoint Regression Program Version 3.3.1, April 2008, National Cancer Institute. (<http://srab.cancer.gov/joinpoint/>).

The APC is the Annual Percent Change based on rates age-adjusted to the 2000 US Std Population (19 age groups - Census P25-1130).

Trends are from the SEER 9 areas (San Francisco, Connecticut, Detroit, Hawaii, Iowa, New Mexico, Seattle, Utah, and Atlanta).

Trends are from US Mortality Files, National Center for Health Statistics, Centers for Disease Control and Prevention.

The AAPC is the Average Annual Percent Change and is based on the APCs calculated by Joinpoint over the time range of 1975-2005.

The APC/AAPC is significantly different from zero ($p < .05$).

a
b
c
*

Table XXVII-2
 URINARY BLADDER CANCER (Invasive and *In Situ*)

AGE ADJUSTED SEER INCIDENCE^a RATES BY YEAR, RACE AND SEX

	All Races			Whites			Blacks		
	Total	Males	Females	Total	Males	Females	Total	Males	Females
<u>AGE-ADJUSTED RATES</u>									
YEAR OF DIAGNOSIS:									
1975	19.3	34.3	8.9	20.2	36.4	9.2	10.6	16.3	6.3
1976	19.7	34.4	9.4	20.7	36.7	9.7	12.5	18.2	8.6
1977	19.0	33.4	8.9	20.0	35.6	9.2	13.5	22.7	7.1
1978	20.0	35.4	9.4	21.1	37.9	9.7	11.7	19.4	6.4
1979	20.0	35.3	9.4	21.3	38.2	9.8	10.3	15.6	6.5
1980	20.4	37.1	8.9	21.5	39.8	9.1	13.3	18.2	10.0
1981	20.7	36.3	9.8	22.0	38.8	10.3	11.5	20.6	5.5
1982	20.1	35.8	9.5	21.4	38.3	10.2	12.2	21.8	5.6
1983	20.1	36.0	9.0	21.3	38.7	9.4	12.2	18.7	7.6
1984	20.9	37.7	9.2	22.3	40.9	9.6	11.4	18.8	6.2
1985	20.7	36.4	9.9	22.1	39.3	10.3	13.0	20.3	8.0
1986	21.0	38.0	9.4	22.4	40.8	9.9	12.9	22.2	6.6
1987	21.7	39.5	9.2	23.2	42.8	9.6	13.3	21.8	7.5
1988	20.9	38.1	9.0	22.7	41.9	9.7	11.3	18.0	6.4
1989	21.0	37.4	9.6	22.7	40.9	10.2	11.3	17.5	7.2
1990	21.1	37.5	9.6	22.6	40.7	10.0	12.7	18.6	8.7
1991	20.9	37.6	9.3	22.7	41.3	9.9	12.9	19.7	8.5
1992	21.3	37.5	9.8	23.0	40.7	10.5	12.5	20.8	6.9
1993	21.2	37.6	9.7	22.8	40.5	10.4	14.1	24.4	7.8
1994	20.8	36.8	9.4	22.6	40.2	10.2	12.3	20.0	6.9
1995	20.6	36.2	9.6	22.4	39.5	10.3	11.8	18.1	7.4
1996	20.8	36.5	9.5	22.6	39.9	10.3	12.2	19.6	7.3
1997	21.0	37.1	9.5	22.9	40.6	10.2	12.5	20.0	7.9
1998	21.5	38.4	9.4	23.5	42.0	10.2	11.8	20.2	6.4
1999	21.7	38.1	10.0	23.6	41.5	10.6	14.6	22.6	9.4
2000	21.8	38.6	9.5	23.8	42.3	10.3	13.1	20.1	8.5
2001	21.6	38.1	9.6	23.8	42.0	10.6	11.5	18.4	7.0
2002	21.1	36.7	9.7	23.2	40.2	10.6	12.4	17.6	8.8
2003	21.2	37.1	9.6	23.4	40.8	10.5	12.5	20.5	7.1
2004	21.1	37.0	9.4	23.2	40.8	10.2	13.0	20.7	8.1
2005	21.2	37.3	9.4	23.2	41.0	10.0	12.8	20.4	7.6
1975-2005	20.8	37.0	9.4	22.5	40.2	10.0	12.5	19.9	7.5

^a SEER 9 areas (San Francisco, Connecticut, Detroit, Hawaii, Iowa, New Mexico, Seattle, Utah, and Atlanta). Rates are per 100,000 and are age-adjusted to the 2000 US Std Population (19 age groups - Census P25-1130).
 - Statistic not shown. Rate based on less than 16 cases for the time interval.

Table XXVII-3
URINARY BLADDER CANCER (Invasive)

AGE-ADJUSTED U.S. DEATH^a RATES BY YEAR, RACE AND SEX

	All Races			Whites			Blacks		
	Total	Males	Females	Total	Males	Females	Total	Males	Females
<u>AGE-ADJUSTED RATES</u>									
YEAR OF DEATH:									
1975	5.5	9.8	2.8	5.6	10.1	2.7	5.0	6.9	3.6
1976	5.6	9.8	2.9	5.6	10.0	2.8	5.3	7.8	3.5
1977	5.5	9.7	2.9	5.6	9.9	2.8	5.2	7.6	3.6
1978	5.4	9.5	2.9	5.5	9.8	2.8	4.9	7.2	3.4
1979	5.2	9.3	2.7	5.3	9.6	2.7	5.0	7.6	3.3
1980	5.2	9.2	2.7	5.2	9.5	2.7	4.7	6.2	3.7
1981	5.1	9.0	2.7	5.1	9.3	2.6	4.9	7.2	3.4
1982	5.0	8.9	2.6	5.0	9.2	2.5	4.9	6.8	3.6
1983	4.9	8.8	2.5	4.9	9.0	2.5	4.7	7.2	3.2
1984	4.7	8.5	2.5	4.8	8.7	2.4	4.7	6.9	3.4
1985	4.7	8.4	2.4	4.7	8.7	2.4	4.5	6.9	3.0
1986	4.5	8.1	2.4	4.6	8.4	2.3	4.2	5.8	3.3
1987	4.4	7.9	2.3	4.5	8.1	2.3	4.4	6.5	3.1
1988	4.4	7.8	2.4	4.5	8.0	2.3	4.3	5.9	3.3
1989	4.5	8.0	2.4	4.5	8.2	2.3	4.6	7.0	3.2
1990	4.5	8.0	2.4	4.6	8.2	2.4	4.4	6.4	3.2
1991	4.4	7.9	2.3	4.5	8.1	2.3	4.4	6.6	3.1
1992	4.5	7.9	2.4	4.5	8.1	2.4	4.3	6.7	3.1
1993	4.5	8.1	2.3	4.5	8.3	2.3	4.2	6.4	2.9
1994	4.5	7.9	2.4	4.5	8.1	2.4	4.3	6.4	3.2
1995	4.4	7.8	2.3	4.4	8.1	2.2	4.0	5.8	3.1
1996	4.4	7.8	2.4	4.5	8.1	2.3	4.2	5.9	3.1
1997	4.4	7.6	2.4	4.5	7.9	2.4	4.0	5.9	3.0
1998	4.4	7.7	2.3	4.5	8.0	2.3	3.9	5.6	3.0
1999	4.4	7.7	2.3	4.5	7.9	2.2	4.0	5.8	3.0
2000	4.3	7.6	2.3	4.5	7.9	2.3	3.7	5.7	2.7
2001	4.3	7.6	2.3	4.5	7.9	2.2	3.7	5.1	2.9
2002	4.4	7.5	2.4	4.5	7.8	2.3	3.9	5.5	3.0
2003	4.3	7.4	2.2	4.4	7.7	2.2	3.7	5.4	2.7
2004	4.4	7.6	2.2	4.5	8.0	2.2	3.6	5.0	2.8
2005	4.3	7.6	2.2	4.5	7.9	2.2	3.7	5.7	2.5
1975-2005	4.6	8.1	2.4	4.7	8.4	2.4	4.3	6.3	3.1

^a US Mortality Files, National Center for Health Statistics, Centers for Disease Control and Prevention. Rates are per 100,000 and are age-adjusted to the 2000 US Std Population (19 age groups - Census P25-1130).

- Statistic not shown. Rate based on less than 16 cases for the time interval.

Table XXVII-4
URINARY BLADDER CANCER (Invasive and *In Situ*)

SEER INCIDENCE^a AND U.S. DEATH^b RATES, AGE-ADJUSTED AND AGE-SPECIFIC RATES, BY RACE AND SEX

	All Races			Whites			Blacks		
	Total	Males	Females	Total	Males	Females	Total	Males	Females
<u>SEER INCIDENCE</u>									
<u>AGE AT DIAGNOSIS</u>									
AGE-ADJUSTED RATES, 2001-2005									
All ages	21.2	37.3	9.4	23.0	40.6	10.0	12.8	20.4	7.7
Under 65	6.1	9.5	2.9	6.7	10.4	3.2	3.8	6.0	2.0
65 and over	125.2	229.4	54.3	135.3	248.7	57.4	74.5	119.8	47.0
All ages(IARC world std) ^c	12.6	21.3	5.6	13.7	23.3	6.1	7.6	12.0	4.4
AGE-SPECIFIC RATES, 2001-2005									
<1	-	-	-	-	-	-	-	-	-
1-4	-	-	-	-	-	-	-	-	-
5-9	-	-	-	-	-	-	-	-	-
10-14	-	-	-	-	-	-	-	-	-
15-19	0.1	-	-	0.1	-	-	-	-	-
20-24	0.2	0.3	0.2	0.2	0.3	0.2	-	-	-
25-29	0.4	0.5	0.3	0.5	0.5	0.4	-	-	-
30-34	0.8	1.2	0.5	0.9	1.3	0.5	0.6	-	-
35-39	1.6	2.2	0.9	1.8	2.4	1.0	1.1	1.8	-
40-44	3.6	5.2	2.0	3.9	5.6	2.1	2.6	3.8	1.5
45-49	7.4	11.4	3.5	8.1	12.4	3.9	5.2	8.4	2.4
50-54	14.8	22.9	7.2	16.3	24.9	7.8	9.6	14.9	5.1
55-59	29.3	46.4	13.2	32.2	50.5	14.5	19.5	31.4	9.6
60-64	49.5	79.3	22.3	55.0	87.6	24.7	27.5	42.5	15.5
65-69	79.7	131.8	34.6	88.2	145.1	37.9	48.1	76.4	26.4
70-74	114.2	197.8	47.2	125.0	216.0	50.6	65.4	102.6	39.4
75-79	146.2	266.8	60.4	158.0	288.8	64.0	85.2	139.3	51.8
80-84	168.2	320.0	73.2	179.0	344.5	75.5	102.3	161.6	69.9
85+	162.1	340.4	80.0	170.5	364.9	82.3	101.1	168.6	73.7
<u>U.S. MORTALITY</u>									
<u>AGE AT DEATH</u>									
AGE-ADJUSTED RATES, 2001-2005									
All ages	4.3	7.5	2.3	4.5	7.9	2.2	3.7	5.4	2.8
Under 65	0.7	1.1	0.4	0.8	1.2	0.4	0.7	1.0	0.5
65 and over	29.2	51.6	15.2	30.2	54.1	15.2	24.4	35.7	18.4
All ages(IARC world std) ^c	2.2	3.7	1.1	2.3	3.9	1.1	1.9	2.7	1.4
AGE-SPECIFIC RATES, 2001-2005									
<1	-	-	-	-	-	-	-	-	-
1-4	-	-	-	-	-	-	-	-	-
5-9	-	-	-	-	-	-	-	-	-
10-14	-	-	-	-	-	-	-	-	-
15-19	-	-	-	-	-	-	-	-	-
20-24	-	-	-	-	-	-	-	-	-
25-29	0.0	-	-	-	-	-	-	-	-
30-34	0.0	0.1	-	0.0	0.1	-	-	-	-
35-39	0.1	0.2	0.1	0.2	0.2	0.1	0.1	-	-
40-44	0.4	0.5	0.3	0.4	0.5	0.3	0.5	0.7	0.4
45-49	0.9	1.3	0.5	0.9	1.3	0.4	1.0	1.2	0.8
50-54	1.7	2.6	0.9	1.8	2.7	0.9	1.9	2.6	1.4
55-59	3.6	5.5	1.7	3.7	5.8	1.7	3.5	4.5	2.7
60-64	6.8	10.8	3.1	7.2	11.5	3.2	5.6	8.0	3.7
65-69	11.7	19.0	5.5	12.3	20.1	5.4	10.0	13.3	7.6
70-74	19.1	31.0	9.5	20.0	32.7	9.5	15.5	21.7	11.3
75-79	30.4	51.9	15.1	31.5	54.1	15.2	25.2	37.9	17.6
80-84	45.3	81.3	23.3	46.7	84.8	23.3	37.7	56.0	28.2
85+	67.5	131.5	39.3	69.1	137.4	39.1	57.8	86.8	46.6

^a SEER 17 areas. Rates are per 100,000 and are age-adjusted to the 2000 US Std Population (19 age groups - Census P25-1130), unless noted.

^b US Mortality Files, National Center for Health Statistics, Centers for Disease Control and Prevention. Rates are per 100,000 and are age-adjusted to the 2000 US Std Population (19 age groups - Census P25-1130), unless noted.

^c Rates are per 100,000 and are age-adjusted to the IARC world standard population.

- Statistic not shown. Rate based on less than 16 cases for the time interval.

Table XXVII-5
URINARY BLADDER CANCER (Invasive and *In Situ*)

SURVIVAL RATES, BY RACE, SEX, DIAGNOSIS YEAR, STAGE AND AGE

	All Races			Whites			Blacks		
	Total	Males	Females	Total	Males	Females	Total	Males	Females
5-YR RELATIVE SURVIVAL RATES									
YEAR OF DIAGNOSIS:									
1960-1963 ^a	-	-	-	53	53	53	24	24	24
1970-1973 ^a	-	-	-	61	61	60	36	38	27
1975-1977 ^b	73.5	75.0	69.6	74.5	75.5	71.5	50.6	56.8	38.8 ^f
1978-1980 ^b	76.0	77.2	72.7	76.9	77.6	74.8	55.6	64.3	40.8 ^f
1981-1983 ^b	78.6	79.9	75.0	79.3	80.4	76.4	60.3	65.7	48.4 ^f
1984-1986 ^b	78.2	79.5	74.6	78.7	79.9	75.6	61.0	64.0	54.2 ^f
1987-1989 ^b	80.6	82.8	74.1	81.4	83.5	75.4	63.3	68.1	54.0 ^f
1990-1992 ^b	80.9	83.3	74.0	81.9	84.2	75.2	64.7	67.6	59.9
1993-1995 ^b	81.5	83.1	76.9	82.2	83.4	78.8	61.7	68.9	46.8
1996-2004 ^b	80.8 ^e	81.8 ^e	77.9 ^e	81.6 ^e	82.4 ^e	79.2 ^e	66.2 ^e	69.4 ^e	59.1 ^e
5-YR PERIOD SURVIVAL RATES^{cd}									
YEAR OF DIAGNOSIS:									
1996-2004	79.7	81.2	75.3	80.2	81.4	76.6	67.1	71.8	58.1
STAGE DISTRIBUTION (%) 1996-2004^c									
All Stages									
Number of cases	77,427	57,690	19,737	70,002	52,507	17,495	3,662	2,328	1,334
Percent	100%	100%	100%	100%	100%	100%	100%	100%	100%
Localized	75	76	71	76	77	72	60	64	53
Regional	18	18	21	18	18	20	27	24	33
Distant	4	3	5	3	3	5	7	5	9
Unstaged	3	3	4	3	3	3	6	6	5
5-YR RELATIVE SURVIVAL RATES, 1996-2004^c									
AGE AT DIAGNOSIS:									
<45	90.9	90.9	90.9	91.8	91.6	92.1	80.9	81.8	78.5 ^f
45-54	85.3	85.6	84.1	86.1	86.2	85.7	70.9	74.8	58.3 ^f
55-64	84.8	85.2	83.4	85.4	85.6	84.5	73.0	76.6	64.6
65-74	79.8	80.7	77.0	80.4	81.0	78.5	62.7	67.7	54.2
75+	72.0	74.6	66.2	72.9	75.3	67.3	51.0	51.8	48.0
Under 65	85.7	86.0	84.7	86.3	86.5	86.0	73.6	76.9	65.1
65 and over	76.2	78.1	71.2	76.9	78.6	72.4	57.1	61.1	51.4
STAGE:									
All Stages	79.8	81.2	75.8	80.5	81.6	77.1	64.9	69.3	56.3
Localized	92.5	92.8	91.9	92.8	92.9	92.3	85.3	86.7	80.4
Regional	44.7	46.8	39.4	45.2	47.2	39.9	38.4	42.3	33.0
Distant	6.1	6.0	6.2	5.9	6.1	5.2	7.5	3.3	11.5
Unstaged	58.8	62.7	48.2	59.1	62.2	50.1	43.2	50.1 ^f	28.9 ^f

^a Rates are based on End Results data from a series of hospital registries and one population-based registry.

^b Rates are from the SEER 9 areas (San Francisco, Connecticut, Detroit, Hawaii, Iowa, New Mexico, Seattle, Utah, Atlanta).

Rates are based on follow-up of patients into 2005.

^c Rates are from the SEER 17 areas (San Francisco, Connecticut, Detroit, Hawaii, Iowa, New Mexico, Seattle, Utah, Atlanta, San Jose-Monterey, Los Angeles, Alaska Native Registry, Rural Georgia, California excluding SF/SJM/LA, Kentucky, Louisiana and New Jersey). California excluding SF/SJM/LA, Kentucky, Louisiana, and New Jersey contribute cases for diagnosis years 2000-2004. The remaining 13 SEER Areas contribute cases for the entire period 1996-2004. Rates are based on follow-up of patients into 2005.

^d Period survival provides a more up-to-date estimate of survival by piecing together the most recent conditional survival estimates from several cohorts. It is computed here using three calendar year blocks (2002-2004: 0-1 year survival), (2001-2003: 1-2 year survival), (2000-2002: 2-3 year survival), (1999-2001: 3-4 year survival), (1998-2000: 4-5 years survival).

^e The difference in rates between 1975-1977 and 1996-2004 is statistically significant ($p < .05$).

^f The standard error of the survival rate is between 5 and 10 percentage points.

^g The standard error of the survival rate is greater than 10 percentage points.

- Statistic could not be calculated due to fewer than 16 cases during the time period.

Table XXVII-6
URINARY BLADDER CANCER

SURVIVAL RATES (Invasive and *In Situ*)^a

By Year of Diagnosis

All Races, Males and Females

Year of Diagnosis

	1975- 1979	1980- 1984	1985	1986	1987	1988	1989	1990	1991	1992	1993	1994	1995	1996	1997	1998	1999	2000	2001	2002	2003	2004
Relative Survival Rates (SEER ^b)																						
1-year	87.5	89.5	89.3	90.3	90.4	90.9	91.4	90.1	90.3	90.5	91.0	91.3	91.1	90.1	91.6	91.3	90.5	91.5	91.5	90.5	90.9	91.2
2-year	81.3	84.5	84.5	85.6	85.9	85.9	86.8	86.2	85.7	85.6	86.5	86.7	87.1	86.0	86.6	86.7	85.5	87.0	87.0	86.5	86.3	
3-year	78.4	81.7	81.3	82.7	83.3	83.9	84.0	83.4	83.6	83.1	84.2	84.8	84.6	83.9	83.6	83.8	82.9	84.3	85.3	84.7		
4-year	76.0	79.6	78.6	80.7	81.6	82.1	82.4	82.0	82.4	82.4	82.5	82.6	82.5	81.9	81.4	82.1	81.2	82.6	83.6			
5-year	74.5	78.1	77.4	79.1	80.4	80.3	81.1	81.3	80.9	80.4	81.0	81.3	82.0	80.5	79.5	80.1	79.5	81.6				
6-year	73.1	76.6	76.5	78.5	78.6	78.8	80.0	80.1	79.7	79.1	79.6	79.7	80.2	79.6	78.1	78.7	78.4					
7-year	71.5	75.5	75.4	77.8	77.6	77.6	78.5	79.0	77.4	77.3	78.1	78.2	78.5	79.1	77.3	78.0						
8-year	70.5	74.6	74.6	76.8	76.2	76.9	76.6	77.1	75.9	76.1	77.6	77.7	77.6	77.9	76.7							
9-year	69.4	73.3	74.2	76.1	74.6	76.0	76.0	75.2	75.0	75.5	76.5	76.9	76.2	77.1								
10-year	67.9	72.5	73.2	75.1	73.4	75.5	74.7	73.4	73.9	74.5	75.9	76.7	75.7									
11-year	66.5	71.7	73.1	73.2	73.2	74.1	73.5	72.1	73.4	73.8	75.3	75.8										
12-year	65.8	70.9	71.0	72.0	72.2	73.5	72.3	70.9	72.8	73.6	75.1											
13-year	65.3	70.4	70.0	71.0	71.5	71.5	72.1	70.7	72.0	73.3												
14-year	64.5	69.4	68.5	69.2	70.5	69.9	71.8	70.2	72.0													
15-year	64.0	68.4	67.4	68.7	69.6	68.5	71.2	69.9														
16-year	63.4	67.2	66.3	67.3	68.7	66.8	70.6															
17-year	63.1	66.5	65.3	67.3	67.6	66.7																
18-year	63.0	66.0	65.3	67.3	67.1																	
19-year	63.0	65.6	65.3	67.2																		
20-year	62.7	65.4	65.3																			

^a Survival rates are relative rates expressed as percents.

^b Rates are from the SEER 9 areas (San Francisco, Connecticut, Detroit, Hawaii, Iowa, New Mexico, Seattle, Utah, and Atlanta).

Table XXVII-7
URINARY BLADDER CANCER

SURVIVAL RATES (Invasive and *In Situ*)^a

By Year of Diagnosis

All Races, Males

Year of Diagnosis

	1975- 1979	1980- 1984	1985	1986	1987	1988	1989	1990	1991	1992	1993	1994	1995	1996	1997	1998	1999	2000	2001	2002	2003	2004
Relative Survival Rates (SEER ^b)																						
1-year	89.5	90.7	91.2	91.7	92.2	92.2	93.3	92.1	91.7	92.1	92.7	93.1	92.6	91.5	93.2	92.9	92.1	92.7	92.1	92.5	92.6	92.4
2-year	83.3	86.0	86.2	87.1	88.1	87.0	89.3	88.3	87.8	87.8	88.9	88.4	88.6	87.4	88.5	88.4	87.1	88.3	87.5	89.1	87.9	
3-year	80.2	83.3	83.2	83.7	85.1	85.3	86.8	85.8	86.0	85.9	86.5	86.5	86.1	85.2	85.5	85.1	84.6	85.3	86.0	87.2		
4-year	77.7	81.0	80.2	81.6	83.5	83.8	85.2	84.4	84.9	85.2	84.5	84.0	83.6	82.9	83.1	83.1	82.5	83.3	84.4			
5-year	75.8	79.4	78.7	79.9	82.6	82.0	83.9	83.7	83.0	83.1	82.8	82.7	83.3	81.5	80.8	80.9	80.5	82.2				
6-year	74.3	78.0	77.9	79.4	81.0	80.7	82.3	82.3	81.4	81.9	81.8	80.9	81.6	80.6	79.1	79.8	79.3					
7-year	72.6	76.9	76.6	78.3	79.8	79.6	80.4	80.8	78.5	79.8	80.1	79.2	80.0	79.7	78.1	79.1						
8-year	71.3	76.0	75.5	77.5	78.1	78.9	78.0	78.8	76.8	78.2	79.7	78.6	79.0	78.6	77.8							
9-year	70.0	74.7	75.1	76.4	76.3	77.9	77.4	76.5	75.7	77.1	79.2	78.1	77.1	77.9								
10-year	68.4	73.8	74.2	75.6	75.2	77.4	75.8	75.2	74.3	76.1	78.6	78.0	76.8									
11-year	66.8	73.2	74.1	74.0	74.9	75.9	74.9	73.6	73.8	75.3	78.3	76.9										
12-year	66.0	72.3	71.4	72.8	73.3	75.9	73.1	72.4	73.6	74.7	78.0											
13-year	65.3	71.8	70.6	71.5	73.0	73.7	72.2	72.4	72.9	74.3												
14-year	64.6	70.5	68.9	70.1	72.5	72.1	71.5	71.8	72.9													
15-year	64.3	69.4	67.9	69.6	71.9	70.6	70.7	71.0														
16-year	63.3	67.9	66.6	67.5	71.3	68.9	70.4															
17-year	63.0	67.2	65.7	67.5	70.4	68.9																
18-year	62.8	66.7	65.7	67.4	69.4																	
19-year	62.8	66.6	65.7	67.4																		
20-year	62.4	66.4	65.7																			

^a Survival rates are relative rates expressed as percents.

^b Rates are from the SEER 9 areas (San Francisco, Connecticut, Detroit, Hawaii, Iowa, New Mexico, Seattle, Utah, and Atlanta).

Table XXVII-8
URINARY BLADDER CANCER

SURVIVAL RATES (Invasive and *In Situ*)^a

By Year of Diagnosis

All Races, Females

Year of Diagnosis

	1975- 1979	1980- 1984	1985	1986	1987	1988	1989	1990	1991	1992	1993	1994	1995	1996	1997	1998	1999	2000	2001	2002	2003	2004
Relative Survival Rates (SEER ^b)																						
1-year	82.0	85.8	84.2	86.3	84.6	87.1	85.8	84.3	85.9	85.8	86.4	86.2	87.1	86.0	87.0	86.4	86.1	87.7	89.7	84.7	86.2	87.5
2-year	75.9	80.0	79.8	81.5	79.1	82.5	79.6	79.8	79.6	79.2	79.8	81.9	83.1	81.9	81.2	81.9	81.0	82.8	85.4	79.1	81.8	
3-year	73.5	77.2	76.1	79.6	77.8	79.4	75.8	76.4	76.6	75.5	77.4	80.1	80.4	80.2	78.0	80.2	78.2	81.5	83.1	77.7		
4-year	71.6	75.4	74.4	78.2	75.4	77.1	74.7	75.2	75.1	74.6	77.0	78.3	79.0	78.9	76.7	78.8	77.1	80.4	81.3			
5-year	70.9	74.3	73.2	76.1	73.7	75.5	73.1	74.2	74.9	72.9	75.8	77.1	77.6	77.9	75.8	77.7	76.6	79.6				
6-year	69.9	72.9	72.6	75.4	71.4	73.2	73.1	73.6	74.8	71.1	73.4	76.4	76.2	76.8	75.1	75.6	76.1					
7-year	68.7	71.5	72.0	75.4	70.7	71.7	72.8	73.6	73.8	70.1	72.7	75.4	74.4	76.8	74.6	74.6						
8-year	68.4	70.8	71.8	74.8	70.2	70.8	72.5	72.4	73.1	70.1	71.2	75.0	73.9	76.2	73.6							
9-year	67.8	69.5	70.9	74.8	69.4	70.0	72.1	71.6	72.8	70.1	69.0	73.4	73.5	74.5								
10-year	66.6	68.5	70.2	73.6	67.8	69.3	71.2	68.4	72.7	70.1	68.4	72.9	72.7									
11-year	65.9	67.7	70.0	71.2	67.3	69.0	69.4	67.4	71.9	69.3	67.1	72.8										
12-year	65.3	67.3	69.6	69.7	67.3	66.5	69.0	65.5	70.7	69.3	66.7											
13-year	65.3	66.7	68.3	69.4	66.2	65.2	69.0	65.2	69.5	69.3												
14-year	64.0	66.4	66.9	67.0	64.5	63.4	69.0	65.2	69.5													
15-year	63.2	65.8	65.6	66.6	62.7	62.3	69.0	65.2														
16-year	63.2	65.4	64.9	66.6	61.2	60.5	69.0															
17-year	63.1	64.7	63.8	66.6	59.5	59.3																
18-year	63.1	64.0	63.6	66.2	59.3																	
19-year	63.1	63.0	63.6	66.2																		
20-year	63.1	62.8	63.6																			

^a Survival rates are relative rates expressed as percents.

^b Rates are from the SEER 9 areas (San Francisco, Connecticut, Detroit, Hawaii, Iowa, New Mexico, Seattle, Utah, and Atlanta).

Table XXVII-9
 URINARY BLADDER CANCER (Invasive and In Situ)

Risk of Being Diagnosed With Cancer in 10, 20 and 30 Years, Lifetime Risk of Being Diagnosed with Cancer, and
 Lifetime Risk of Dying from Cancer Given Cancer Free At Current Age
 Both Sexes, 2003-2005 By Race/Ethnicity

Race/ Ethnicity	Current Age	Risk of Being Diagnosed with Cancer			Risk of Dying from Cancer	
		+10 yrs Percent (95% C.I.)	+20 yrs Percent (95% C.I.)	+30 yrs Percent (95% C.I.)	Eventually Percent (95% C.I.)	Eventually Percent (95% C.I.)
All Races	0	0.00 (0.00, 0.00)	0.00 (0.00, 0.00)	0.00 (0.00, 0.01)	2.38 (2.36, 2.40)	0.54 (0.53, 0.54)
	10	0.00 (0.00, 0.00)	0.00 (0.00, 0.00)	0.02 (0.02, 0.02)	2.41 (2.39, 2.43)	0.55 (0.54, 0.55)
	20	0.00 (0.00, 0.00)	0.02 (0.01, 0.02)	0.07 (0.07, 0.07)	2.42 (2.40, 2.44)	0.55 (0.54, 0.55)
	30	0.01 (0.01, 0.01)	0.07 (0.07, 0.07)	0.27 (0.27, 0.28)	2.44 (2.42, 2.46)	0.55 (0.55, 0.56)
	40	0.06 (0.05, 0.06)	0.26 (0.26, 0.27)	0.80 (0.79, 0.82)	2.46 (2.43, 2.48)	0.56 (0.55, 0.57)
	50	0.21 (0.21, 0.22)	0.77 (0.76, 0.78)	1.65 (1.64, 1.67)	2.47 (2.45, 2.50)	0.57 (0.56, 0.58)
	60	0.59 (0.58, 0.60)	1.54 (1.52, 1.55)	2.23 (2.21, 2.26)	2.41 (2.38, 2.43)	0.58 (0.57, 0.59)
	70	1.09 (1.07, 1.11)	1.90 (1.87, 1.92)	- (- , -)	2.10 (2.07, 2.12)	0.57 (0.56, 0.58)
80	1.15 (1.13, 1.17)	- (- , -)	- (- , -)	1.44 (1.41, 1.47)	0.51 (0.51, 0.52)	
White	0	0.00 (0.00, 0.00)	0.00 (0.00, 0.00)	0.01 (0.00, 0.01)	2.59 (2.56, 2.62)	0.57 (0.56, 0.57)
	10	0.00 (0.00, 0.00)	0.00 (0.00, 0.01)	0.02 (0.02, 0.02)	2.62 (2.59, 2.64)	0.57 (0.57, 0.58)
	20	0.00 (0.00, 0.00)	0.02 (0.02, 0.02)	0.08 (0.07, 0.08)	2.63 (2.60, 2.65)	0.57 (0.57, 0.58)
	30	0.01 (0.01, 0.01)	0.07 (0.07, 0.08)	0.30 (0.29, 0.31)	2.64 (2.62, 2.67)	0.58 (0.57, 0.59)
	40	0.06 (0.06, 0.06)	0.29 (0.28, 0.30)	0.89 (0.88, 0.90)	2.66 (2.64, 2.69)	0.59 (0.58, 0.59)
	50	0.23 (0.23, 0.24)	0.85 (0.84, 0.86)	1.82 (1.79, 1.84)	2.67 (2.65, 2.70)	0.60 (0.59, 0.60)
	60	0.66 (0.64, 0.67)	1.68 (1.66, 1.70)	2.41 (2.39, 2.44)	2.59 (2.56, 2.62)	0.60 (0.60, 0.61)
	70	1.18 (1.16, 1.20)	2.03 (2.01, 2.06)	- (- , -)	2.24 (2.21, 2.27)	0.59 (0.58, 0.60)
80	1.22 (1.19, 1.24)	- (- , -)	- (- , -)	1.51 (1.48, 1.54)	0.52 (0.52, 0.53)	
Black	0	0.00 (0.00, 0.00)	0.00 (0.00, 0.00)	0.00 (0.00, 0.00)	1.14 (1.09, 1.19)	0.36 (0.35, 0.38)
	10	0.00 (0.00, 0.00)	0.00 (0.00, 0.00)	0.01 (0.01, 0.01)	1.17 (1.12, 1.22)	0.37 (0.36, 0.39)
	20	0.00 (0.00, 0.00)	0.01 (0.01, 0.01)	0.05 (0.04, 0.05)	1.18 (1.12, 1.23)	0.38 (0.36, 0.39)
	30	0.01 (0.01, 0.01)	0.05 (0.04, 0.05)	0.17 (0.16, 0.19)	1.19 (1.14, 1.25)	0.38 (0.37, 0.40)
	40	0.04 (0.03, 0.04)	0.17 (0.15, 0.18)	0.46 (0.43, 0.48)	1.21 (1.16, 1.27)	0.39 (0.37, 0.40)
	50	0.14 (0.12, 0.15)	0.44 (0.41, 0.47)	0.87 (0.83, 0.91)	1.24 (1.18, 1.30)	0.40 (0.38, 0.42)
	60	0.34 (0.32, 0.37)	0.83 (0.78, 0.87)	1.16 (1.10, 1.22)	1.24 (1.18, 1.31)	0.42 (0.40, 0.44)
	70	0.61 (0.56, 0.65)	1.02 (0.96, 1.08)	- (- , -)	1.13 (1.06, 1.20)	0.44 (0.42, 0.46)
80	0.67 (0.61, 0.74)	- (- , -)	- (- , -)	0.85 (0.77, 0.93)	0.43 (0.40, 0.46)	

Devcan Version 7.0.0, April 2008, National Cancer Institute (<http://srab.cancer.gov/devcan/>).

Source: Incidence data are from the SEER 17 areas (San Francisco, Connecticut, Detroit, Hawaii, Iowa, New Mexico, Seattle, Utah, Atlanta, San Jose-Monterey, Los Angeles, Alaska Native Registry, Rural Georgia, California excluding SF/SJM/LA, Kentucky, Louisiana and New Jersey). Mortality data are from the NCHS public use data file for the total US.

- Statistic could not be calculated.

A percent or confidence interval value of 0.00 represents a value that is below 0.005.

Table XXVII-9 - continued
 URINARY BLADDER CANCER (Invasive and In Situ)

Risk of Being Diagnosed With Cancer in 10, 20 and 30 Years, Lifetime Risk of Being Diagnosed with Cancer, and
 Lifetime Risk of Dying from Cancer Given Cancer Free At Current Age
 Both Sexes, 2003-2005 By Race/Ethnicity

Race/ Ethnicity	Current Age	Risk of Being Diagnosed with Cancer				Risk of Dying from Cancer	
		+10 yrs Percent (95% C.I.)	+20 yrs Percent (95% C.I.)	+30 yrs Percent (95% C.I.)	Eventually Percent (95% C.I.)	Eventually Percent (95% C.I.)	
Asian/ Pacific Islander	0	0.00 (0.00, 0.00)	0.00 (0.00, 0.00)	0.00 (0.00, 0.00)	1.42 (1.34, 1.52)	0.38 (0.33, 0.44)	
	10	0.00 (0.00, 0.00)	0.00 (0.00, 0.00)	0.01 (0.00, 0.01)	1.44 (1.35, 1.53)	0.38 (0.33, 0.44)	
	20	0.00 (0.00, 0.00)	0.01 (0.00, 0.01)	0.03 (0.02, 0.03)	1.44 (1.35, 1.54)	0.38 (0.33, 0.44)	
	30	0.00 (0.00, 0.01)	0.03 (0.02, 0.03)	0.11 (0.09, 0.12)	1.44 (1.36, 1.54)	0.38 (0.33, 0.44)	
	40	0.02 (0.02, 0.03)	0.10 (0.09, 0.11)	0.33 (0.31, 0.36)	1.45 (1.36, 1.55)	0.38 (0.33, 0.45)	
	50	0.08 (0.07, 0.09)	0.31 (0.29, 0.34)	0.76 (0.71, 0.80)	1.45 (1.36, 1.55)	0.39 (0.33, 0.45)	
	60	0.24 (0.22, 0.26)	0.70 (0.66, 0.75)	1.19 (1.12, 1.26)	1.41 (1.32, 1.51)	0.39 (0.34, 0.45)	
	70	0.50 (0.46, 0.54)	1.03 (0.96, 1.10)	- (- , -)	1.27 (1.18, 1.38)	0.39 (0.33, 0.46)	
	80	0.66 (0.60, 0.73)	- (- , -)	- (- , -)	0.96 (0.86, 1.08)	0.38 (0.31, 0.46)	
American Indian/ Alaska Native ^a	0	0.00 (0.00, 0.02)	0.00 (0.00, 0.02)	0.00 (0.00, 0.02)	0.87 (0.68, 1.22)	0.20 (0.14, 0.31)	
	10	0.00 (0.00, 0.01)	0.00 (0.00, 0.01)	0.01 (0.00, 0.03)	0.89 (0.69, 1.25)	0.20 (0.14, 0.32)	
	20	0.00 (0.00, 0.01)	0.01 (0.00, 0.03)	0.02 (0.01, 0.05)	0.89 (0.69, 1.26)	0.21 (0.14, 0.32)	
	30	0.01 (0.00, 0.03)	0.02 (0.01, 0.05)	0.10 (0.07, 0.15)	0.91 (0.70, 1.28)	0.21 (0.14, 0.33)	
	40	0.02 (0.01, 0.04)	0.10 (0.06, 0.15)	0.34 (0.25, 0.45)	0.92 (0.72, 1.30)	0.22 (0.15, 0.33)	
	50	0.08 (0.05, 0.13)	0.34 (0.24, 0.46)	0.64 (0.49, 0.82)	0.95 (0.73, 1.34)	0.22 (0.15, 0.35)	
	60	0.27 (0.19, 0.39)	0.59 (0.44, 0.78)	0.92 (0.70, 1.20)	0.93 (0.70, 1.35)	0.22 (0.14, 0.36)	
	70	0.38 (0.25, 0.55)	0.76 (0.53, 1.06)	- (- , -)	0.77 (0.54, 1.25)	0.22 (0.13, 0.39)	
	80	0.53 (0.31, 0.86)	- (- , -)	- (- , -)	0.55 (0.32, 1.16)	0.24 (0.12, 0.47)	
Hispanic ^b	0	0.00 (0.00, 0.00)	0.00 (0.00, 0.00)	0.00 (0.00, 0.00)	1.53 (1.46, 1.62)	0.39 (0.36, 0.42)	
	10	0.00 (0.00, 0.00)	0.00 (0.00, 0.00)	0.01 (0.01, 0.01)	1.55 (1.47, 1.64)	0.39 (0.36, 0.42)	
	20	0.00 (0.00, 0.00)	0.01 (0.01, 0.01)	0.04 (0.03, 0.04)	1.56 (1.48, 1.64)	0.39 (0.37, 0.42)	
	30	0.01 (0.01, 0.01)	0.03 (0.03, 0.04)	0.13 (0.12, 0.14)	1.57 (1.49, 1.65)	0.40 (0.37, 0.43)	
	40	0.03 (0.02, 0.03)	0.13 (0.12, 0.14)	0.43 (0.40, 0.45)	1.58 (1.50, 1.66)	0.40 (0.37, 0.43)	
	50	0.10 (0.09, 0.11)	0.41 (0.38, 0.43)	0.92 (0.88, 0.97)	1.58 (1.50, 1.67)	0.41 (0.38, 0.44)	
	60	0.32 (0.30, 0.34)	0.86 (0.82, 0.91)	1.35 (1.29, 1.42)	1.56 (1.47, 1.65)	0.41 (0.38, 0.44)	
	70	0.60 (0.56, 0.64)	1.15 (1.09, 1.22)	- (- , -)	1.38 (1.29, 1.48)	0.41 (0.37, 0.44)	
	80	0.73 (0.66, 0.79)	- (- , -)	- (- , -)	1.03 (0.93, 1.14)	0.38 (0.34, 0.43)	

Devcan Version 7.0.0, April 2008, National Cancer Institute (<http://srab.cancer.gov/devcan/>).

Source: Incidence data are from the SEER 17 areas (San Francisco, Connecticut, Detroit, Hawaii, Iowa, New Mexico, Seattle, Utah, Atlanta, San Jose-Monterey, Los Angeles, Alaska Native Registry, Rural Georgia, California excluding SF/SJM/LA, Kentucky, Louisiana and New Jersey). Mortality data are from the NCHS public use data file for the total US.

^a Underlying incidence and mortality data for American Indian/Alaska Native are based on the CHSDA (Contract Health Service Delivery Area) counties.

^b Hispanic is not mutually exclusive from whites, blacks, Asian/Pacific Islanders, and American Indians/Alaska Natives. Underlying incidence data for Hispanics are based on NHIA and exclude cases from the Alaska Native Registry and Kentucky. Underlying mortality data for Hispanics exclude deaths from Minnesota, New Hampshire and North Dakota.

- Statistic could not be calculated.

A percent or confidence interval value of 0.00 represents a value that is below 0.005.

Table XXVII-9 - continued
 URINARY BLADDER CANCER (Invasive and In Situ)

Risk of Being Diagnosed With Cancer in 10, 20 and 30 Years, Lifetime Risk of Being Diagnosed with Cancer, and
 Lifetime Risk of Dying from Cancer Given Cancer Free At Current Age
 Males, 2003-2005 By Race/Ethnicity

Race/ Ethnicity	Current Age	Risk of Being Diagnosed with Cancer						Risk of Dying from Cancer	
		+10 yrs Percent (95% C.I.)	+20 yrs Percent (95% C.I.)	+30 yrs Percent (95% C.I.)	Eventually Percent (95% C.I.)	Eventually Percent (95% C.I.)			
All Races	0	0.00 (0.00, 0.00)	0.00 (0.00, 0.00)	0.01 (0.00, 0.01)	3.74 (3.70, 3.78)	0.80 (0.79, 0.81)			
	10	0.00 (0.00, 0.00)	0.01 (0.00, 0.01)	0.02 (0.02, 0.02)	3.79 (3.75, 3.84)	0.81 (0.80, 0.82)			
	20	0.00 (0.00, 0.01)	0.02 (0.02, 0.02)	0.10 (0.10, 0.11)	3.81 (3.77, 3.86)	0.82 (0.81, 0.83)			
	30	0.02 (0.02, 0.02)	0.10 (0.10, 0.10)	0.42 (0.41, 0.43)	3.86 (3.82, 3.90)	0.83 (0.82, 0.84)			
	40	0.08 (0.08, 0.09)	0.41 (0.40, 0.42)	1.26 (1.24, 1.28)	3.91 (3.86, 3.95)	0.84 (0.83, 0.85)			
	50	0.33 (0.32, 0.34)	1.22 (1.20, 1.24)	2.66 (2.63, 2.70)	3.97 (3.92, 4.01)	0.87 (0.86, 0.88)			
	60	0.96 (0.94, 0.98)	2.52 (2.49, 2.56)	3.66 (3.62, 3.70)	3.94 (3.89, 3.98)	0.90 (0.88, 0.91)			
	70	1.87 (1.84, 1.91)	3.24 (3.19, 3.28)	- (- , -)	3.57 (3.51, 3.62)	0.91 (0.90, 0.92)			
80	2.12 (2.07, 2.16)	- (- , -)	- (- , -)	2.63 (2.57, 2.69)	0.88 (0.86, 0.90)				
White	0	0.00 (0.00, 0.00)	0.00 (0.00, 0.00)	0.01 (0.01, 0.01)	4.09 (4.04, 4.13)	0.86 (0.85, 0.87)			
	10	0.00 (0.00, 0.00)	0.01 (0.00, 0.01)	0.03 (0.02, 0.03)	4.13 (4.08, 4.18)	0.87 (0.86, 0.88)			
	20	0.00 (0.00, 0.01)	0.02 (0.02, 0.03)	0.11 (0.11, 0.12)	4.15 (4.10, 4.20)	0.87 (0.86, 0.88)			
	30	0.02 (0.02, 0.02)	0.11 (0.10, 0.11)	0.46 (0.45, 0.47)	4.20 (4.15, 4.25)	0.88 (0.87, 0.90)			
	40	0.09 (0.09, 0.10)	0.44 (0.43, 0.45)	1.39 (1.36, 1.41)	4.25 (4.20, 4.30)	0.90 (0.89, 0.91)			
	50	0.37 (0.36, 0.38)	1.34 (1.32, 1.36)	2.92 (2.88, 2.96)	4.30 (4.25, 4.36)	0.92 (0.91, 0.93)			
	60	1.05 (1.03, 1.08)	2.76 (2.72, 2.80)	3.97 (3.92, 4.02)	4.25 (4.20, 4.31)	0.95 (0.93, 0.96)			
	70	2.03 (2.00, 2.07)	3.49 (3.43, 3.54)	- (- , -)	3.82 (3.77, 3.88)	0.95 (0.94, 0.97)			
80	2.26 (2.21, 2.31)	- (- , -)	- (- , -)	2.79 (2.72, 2.85)	0.91 (0.90, 0.93)				
Black	0	0.00 (0.00, 0.00)	0.00 (0.00, 0.00)	0.00 (0.00, 0.01)	1.53 (1.44, 1.62)	0.42 (0.40, 0.44)			
	10	0.00 (0.00, 0.00)	0.00 (0.00, 0.01)	0.02 (0.01, 0.02)	1.57 (1.48, 1.66)	0.43 (0.41, 0.46)			
	20	0.00 (0.00, 0.00)	0.02 (0.01, 0.02)	0.07 (0.06, 0.08)	1.58 (1.49, 1.67)	0.43 (0.41, 0.46)			
	30	0.01 (0.01, 0.02)	0.07 (0.06, 0.08)	0.26 (0.23, 0.28)	1.62 (1.53, 1.72)	0.44 (0.42, 0.47)			
	40	0.06 (0.05, 0.07)	0.25 (0.23, 0.28)	0.68 (0.63, 0.73)	1.66 (1.57, 1.76)	0.46 (0.43, 0.48)			
	50	0.21 (0.18, 0.23)	0.67 (0.62, 0.72)	1.27 (1.19, 1.35)	1.71 (1.61, 1.81)	0.48 (0.45, 0.50)			
	60	0.54 (0.49, 0.59)	1.24 (1.15, 1.32)	1.66 (1.56, 1.76)	1.75 (1.64, 1.87)	0.51 (0.48, 0.54)			
	70	0.94 (0.86, 1.03)	1.51 (1.39, 1.63)	- (- , -)	1.63 (1.51, 1.77)	0.55 (0.52, 0.59)			
80	1.04 (0.91, 1.17)	- (- , -)	- (- , -)	1.26 (1.11, 1.44)	0.58 (0.53, 0.64)				

Devcan Version 7.0.0, April 2008, National Cancer Institute (<http://srab.cancer.gov/devcan/>).

Source: Incidence data are from the SEER 17 areas (San Francisco, Connecticut, Detroit, Hawaii, Iowa, New Mexico, Seattle, Utah, Atlanta, San Jose-Monterey, Los Angeles, Alaska Native Registry, Rural Georgia, California excluding SF/SJM/LA, Kentucky, Louisiana and New Jersey). Mortality data are from the NCHS public use data file for the total US.

- Statistic could not be calculated.

A percent or confidence interval value of 0.00 represents a value that is below 0.005.

Table XXVII-9 - continued
 URINARY BLADDER CANCER (Invasive and In Situ)

Risk of Being Diagnosed With Cancer in 10, 20 and 30 Years, Lifetime Risk of Being Diagnosed with Cancer, and
 Lifetime Risk of Dying from Cancer Given Cancer Free At Current Age
 Males, 2003-2005 By Race/Ethnicity

Race/ Ethnicity	Current Age	Risk of Being Diagnosed with Cancer				Risk of Dying from Cancer	
		+10 yrs Percent (95% C.I.)	+20 yrs Percent (95% C.I.)	+30 yrs Percent (95% C.I.)	Eventually Percent (95% C.I.)	Eventually Percent (95% C.I.)	
Asian/ Pacific Islander	0	0.00 (0.00, 0.00)	0.00 (0.00, 0.00)	0.00 (0.00, 0.01)	2.23 (2.08, 2.40)	0.53 (0.45, 0.64)	
	10	0.00 (0.00, 0.00)	0.00 (0.00, 0.01)	0.01 (0.00, 0.01)	2.25 (2.10, 2.43)	0.54 (0.45, 0.65)	
	20	0.00 (0.00, 0.01)	0.01 (0.00, 0.01)	0.04 (0.04, 0.05)	2.26 (2.10, 2.43)	0.54 (0.45, 0.65)	
	30	0.01 (0.00, 0.01)	0.04 (0.03, 0.05)	0.17 (0.15, 0.19)	2.27 (2.11, 2.45)	0.54 (0.45, 0.65)	
	40	0.04 (0.03, 0.05)	0.16 (0.14, 0.19)	0.54 (0.50, 0.59)	2.28 (2.12, 2.46)	0.55 (0.46, 0.66)	
	50	0.13 (0.11, 0.15)	0.51 (0.47, 0.56)	1.26 (1.18, 1.35)	2.29 (2.13, 2.47)	0.55 (0.46, 0.66)	
	60	0.40 (0.36, 0.45)	1.18 (1.10, 1.27)	1.92 (1.79, 2.05)	2.25 (2.09, 2.44)	0.56 (0.47, 0.68)	
	70	0.87 (0.79, 0.95)	1.69 (1.56, 1.83)	- (- , -)	2.06 (1.88, 2.26)	0.56 (0.46, 0.69)	
	80	1.08 (0.96, 1.21)	- (- , -)	- (- , -)	1.57 (1.37, 1.80)	0.55 (0.43, 0.72)	
American Indian/ Alaska Native ^a	0	0.00 (0.00, 0.05)	0.00 (0.00, 0.05)	0.00 (0.00, 0.05)	1.38 (1.03, 2.13)	0.25 (0.16, 0.47)	
	10	0.00 (0.00, 0.02)	0.00 (0.00, 0.02)	0.01 (0.00, 0.04)	1.41 (1.05, 2.17)	0.26 (0.17, 0.48)	
	20	0.00 (0.00, 0.02)	0.01 (0.00, 0.04)	0.03 (0.01, 0.07)	1.43 (1.06, 2.20)	0.26 (0.17, 0.49)	
	30	0.01 (0.00, 0.04)	0.03 (0.01, 0.07)	0.18 (0.11, 0.28)	1.46 (1.09, 2.25)	0.27 (0.18, 0.50)	
	40	0.02 (0.00, 0.05)	0.18 (0.11, 0.28)	0.58 (0.41, 0.81)	1.50 (1.12, 2.32)	0.28 (0.18, 0.52)	
	50	0.17 (0.10, 0.27)	0.60 (0.42, 0.83)	1.05 (0.78, 1.40)	1.57 (1.16, 2.43)	0.30 (0.19, 0.55)	
	60	0.47 (0.31, 0.70)	0.97 (0.70, 1.34)	1.52 (1.10, 2.08)	1.54 (1.11, 2.48)	0.30 (0.19, 0.58)	
	70	0.60 (0.37, 0.94)	1.26 (0.82, 1.88)	- (- , -)	1.28 (0.83, 2.39)	0.31 (0.18, 0.66)	
	80	0.98 (0.52, 1.74)	- (- , -)	- (- , -)	1.01 (0.53, 2.59)	0.34 (0.16, 0.87)	
Hispanic ^b	0	0.00 (0.00, 0.00)	0.00 (0.00, 0.00)	0.00 (0.00, 0.01)	2.39 (2.25, 2.55)	0.59 (0.53, 0.65)	
	10	0.00 (0.00, 0.00)	0.00 (0.00, 0.01)	0.01 (0.01, 0.02)	2.42 (2.27, 2.58)	0.59 (0.54, 0.66)	
	20	0.00 (0.00, 0.00)	0.01 (0.01, 0.01)	0.05 (0.04, 0.06)	2.43 (2.28, 2.60)	0.60 (0.54, 0.66)	
	30	0.01 (0.01, 0.01)	0.05 (0.04, 0.06)	0.20 (0.18, 0.22)	2.46 (2.31, 2.62)	0.60 (0.55, 0.67)	
	40	0.04 (0.03, 0.05)	0.20 (0.18, 0.21)	0.67 (0.62, 0.71)	2.48 (2.33, 2.65)	0.61 (0.56, 0.68)	
	50	0.16 (0.14, 0.18)	0.64 (0.60, 0.69)	1.48 (1.40, 1.56)	2.51 (2.36, 2.69)	0.63 (0.57, 0.69)	
	60	0.52 (0.48, 0.56)	1.41 (1.32, 1.49)	2.22 (2.10, 2.36)	2.51 (2.35, 2.70)	0.64 (0.58, 0.71)	
	70	1.03 (0.95, 1.11)	1.97 (1.84, 2.11)	- (- , -)	2.30 (2.13, 2.51)	0.65 (0.58, 0.73)	
	80	1.33 (1.19, 1.48)	- (- , -)	- (- , -)	1.80 (1.58, 2.05)	0.67 (0.58, 0.78)	

Devcan Version 7.0.0, April 2008, National Cancer Institute (<http://srab.cancer.gov/devcan/>).

Source: Incidence data are from the SEER 17 areas (San Francisco, Connecticut, Detroit, Hawaii, Iowa, New Mexico, Seattle, Utah, Atlanta, San Jose-Monterey, Los Angeles, Alaska Native Registry, Rural Georgia, California excluding SF/SJM/LA, Kentucky, Louisiana and New Jersey). Mortality data are from the NCHS public use data file for the total US.

^a Underlying incidence and mortality data for American Indian/Alaska Native are based on the CHSDA (Contract Health Service Delivery Area) counties.

^b Hispanic is not mutually exclusive from whites, blacks, Asian/Pacific Islanders, and American Indians/Alaska Natives. Underlying incidence data for Hispanics are based on NHIA and exclude cases from the Alaska Native Registry and Kentucky. Underlying mortality data for Hispanics exclude deaths from Minnesota, New Hampshire and North Dakota.

- Statistic could not be calculated.

A percent or confidence interval value of 0.00 represents a value that is below 0.005.

Table XXVII-9 - continued
 URINARY BLADDER CANCER (Invasive and In Situ)

Risk of Being Diagnosed With Cancer in 10, 20 and 30 Years, Lifetime Risk of Being Diagnosed with Cancer, and
 Lifetime Risk of Dying from Cancer Given Cancer Free At Current Age
 Females, 2003-2005 By Race/Ethnicity

Race/ Ethnicity	Current Age	Risk of Being Diagnosed with Cancer			Risk of Dying from Cancer	
		+10 yrs Percent (95% C.I.)	+20 yrs Percent (95% C.I.)	+30 yrs Percent (95% C.I.)	Eventually Percent (95% C.I.)	Eventually Percent (95% C.I.)
All Races	0	0.00 (0.00, 0.00)	0.00 (0.00, 0.00)	0.00 (0.00, 0.00)	1.18 (1.16, 1.21)	0.32 (0.32, 0.33)
	10	0.00 (0.00, 0.00)	0.00 (0.00, 0.00)	0.01 (0.01, 0.01)	1.20 (1.17, 1.22)	0.33 (0.32, 0.33)
	20	0.00 (0.00, 0.00)	0.01 (0.01, 0.01)	0.04 (0.03, 0.04)	1.20 (1.18, 1.22)	0.33 (0.32, 0.33)
	30	0.01 (0.01, 0.01)	0.03 (0.03, 0.04)	0.13 (0.12, 0.13)	1.20 (1.18, 1.23)	0.33 (0.32, 0.33)
	40	0.03 (0.03, 0.03)	0.12 (0.12, 0.13)	0.37 (0.36, 0.38)	1.21 (1.18, 1.23)	0.33 (0.32, 0.34)
	50	0.10 (0.09, 0.10)	0.35 (0.34, 0.36)	0.75 (0.73, 0.77)	1.20 (1.18, 1.23)	0.33 (0.33, 0.34)
	60	0.26 (0.25, 0.27)	0.68 (0.67, 0.70)	1.04 (1.02, 1.07)	1.16 (1.14, 1.18)	0.34 (0.33, 0.34)
	70	0.47 (0.46, 0.48)	0.87 (0.85, 0.90)	- (- , -)	1.01 (0.98, 1.03)	0.33 (0.33, 0.34)
80	0.54 (0.52, 0.56)	- (- , -)	- (- , -)	0.72 (0.69, 0.74)	0.30 (0.30, 0.31)	
White	0	0.00 (0.00, 0.00)	0.00 (0.00, 0.00)	0.00 (0.00, 0.01)	1.26 (1.24, 1.29)	0.33 (0.32, 0.33)
	10	0.00 (0.00, 0.00)	0.00 (0.00, 0.00)	0.01 (0.01, 0.01)	1.27 (1.25, 1.30)	0.33 (0.32, 0.34)
	20	0.00 (0.00, 0.00)	0.01 (0.01, 0.01)	0.04 (0.04, 0.04)	1.28 (1.25, 1.30)	0.33 (0.32, 0.34)
	30	0.01 (0.01, 0.01)	0.04 (0.04, 0.04)	0.14 (0.14, 0.15)	1.28 (1.25, 1.31)	0.33 (0.33, 0.34)
	40	0.03 (0.03, 0.03)	0.13 (0.13, 0.14)	0.41 (0.39, 0.42)	1.28 (1.26, 1.31)	0.33 (0.33, 0.34)
	50	0.11 (0.10, 0.11)	0.38 (0.37, 0.39)	0.81 (0.79, 0.83)	1.28 (1.25, 1.30)	0.34 (0.33, 0.34)
	60	0.29 (0.28, 0.30)	0.74 (0.72, 0.76)	1.11 (1.08, 1.13)	1.22 (1.20, 1.25)	0.34 (0.33, 0.35)
	70	0.50 (0.49, 0.52)	0.92 (0.89, 0.94)	- (- , -)	1.05 (1.02, 1.07)	0.33 (0.33, 0.34)
80	0.56 (0.54, 0.58)	- (- , -)	- (- , -)	0.73 (0.71, 0.76)	0.30 (0.29, 0.31)	
Black	0	0.00 (0.00, 0.00)	0.00 (0.00, 0.00)	0.00 (0.00, 0.00)	0.79 (0.74, 0.86)	0.32 (0.30, 0.34)
	10	0.00 (0.00, 0.00)	0.00 (0.00, 0.00)	0.00 (0.00, 0.01)	0.81 (0.75, 0.88)	0.33 (0.31, 0.35)
	20	0.00 (0.00, 0.00)	0.00 (0.00, 0.01)	0.02 (0.02, 0.03)	0.81 (0.75, 0.88)	0.33 (0.31, 0.35)
	30	0.00 (0.00, 0.01)	0.02 (0.02, 0.03)	0.09 (0.08, 0.11)	0.82 (0.76, 0.89)	0.33 (0.31, 0.35)
	40	0.02 (0.01, 0.03)	0.09 (0.08, 0.11)	0.26 (0.23, 0.29)	0.83 (0.77, 0.90)	0.34 (0.32, 0.36)
	50	0.08 (0.06, 0.09)	0.25 (0.22, 0.28)	0.53 (0.48, 0.58)	0.84 (0.78, 0.91)	0.34 (0.32, 0.36)
	60	0.19 (0.16, 0.22)	0.49 (0.45, 0.54)	0.76 (0.69, 0.82)	0.84 (0.77, 0.91)	0.35 (0.33, 0.37)
	70	0.36 (0.32, 0.41)	0.68 (0.61, 0.75)	- (- , -)	0.78 (0.71, 0.86)	0.36 (0.34, 0.39)
80	0.46 (0.40, 0.53)	- (- , -)	- (- , -)	0.61 (0.53, 0.70)	0.35 (0.32, 0.38)	

Devcan Version 7.0.0, April 2008, National Cancer Institute (<http://srab.cancer.gov/devcan/>).

Source: Incidence data are from the SEER 17 areas (San Francisco, Connecticut, Detroit, Hawaii, Iowa, New Mexico, Seattle, Utah, Atlanta, San Jose-Monterey, Los Angeles, Alaska Native Registry, Rural Georgia, California excluding SF/SJM/LA, Kentucky, Louisiana and New Jersey). Mortality data are from the NCHS public use data file for the total US.

- Statistic could not be calculated.

A percent or confidence interval value of 0.00 represents a value that is below 0.005.

Table XXVII-9 - continued
 URINARY BLADDER CANCER (Invasive and In Situ)

Risk of Being Diagnosed With Cancer in 10, 20 and 30 Years, Lifetime Risk of Being Diagnosed with Cancer, and
 Lifetime Risk of Dying from Cancer Given Cancer Free At Current Age
 Females, 2003-2005 By Race/Ethnicity

Race/ Ethnicity	Current Age	Risk of Being Diagnosed with Cancer				Risk of Dying from Cancer	
		+10 yrs Percent (95% C.I.)	+20 yrs Percent (95% C.I.)	+30 yrs Percent (95% C.I.)	Eventually Percent (95% C.I.)	Eventually Percent (95% C.I.)	
Asian/ Pacific Islander	0	0.00 (0.00, 0.00)	0.00 (0.00, 0.01)	0.00 (0.00, 0.01)	0.72 (0.63, 0.82)	0.24 (0.19, 0.31)	
	10	0.00 (0.00, 0.00)	0.00 (0.00, 0.01)	0.00 (0.00, 0.01)	0.72 (0.64, 0.83)	0.24 (0.19, 0.31)	
	20	0.00 (0.00, 0.00)	0.00 (0.00, 0.01)	0.01 (0.01, 0.02)	0.72 (0.64, 0.83)	0.24 (0.19, 0.31)	
	30	0.00 (0.00, 0.01)	0.01 (0.01, 0.02)	0.05 (0.04, 0.06)	0.72 (0.64, 0.83)	0.24 (0.19, 0.31)	
	40	0.01 (0.01, 0.01)	0.05 (0.04, 0.06)	0.15 (0.13, 0.17)	0.72 (0.64, 0.83)	0.24 (0.19, 0.31)	
	50	0.04 (0.03, 0.05)	0.14 (0.12, 0.16)	0.34 (0.30, 0.39)	0.72 (0.64, 0.83)	0.24 (0.19, 0.31)	
	60	0.10 (0.09, 0.13)	0.31 (0.27, 0.36)	0.59 (0.53, 0.66)	0.70 (0.62, 0.81)	0.24 (0.19, 0.32)	
	70	0.22 (0.19, 0.26)	0.52 (0.46, 0.59)	- (- , -)	0.64 (0.55, 0.75)	0.25 (0.19, 0.32)	
80	0.35 (0.29, 0.42)	- (- , -)	- (- , -)	0.49 (0.40, 0.61)	0.24 (0.18, 0.33)		
American Indian/ Alaska Native ^a	0	0.00 (0.00, 0.05)	0.00 (0.00, 0.05)	0.00 (0.00, 0.05)	0.39 (0.22, 0.93)	0.15 (0.07, 0.33)	
	10	0.00 (0.00, 0.02)	0.00 (0.00, 0.02)	0.01 (0.00, 0.04)	0.40 (0.22, 0.94)	0.15 (0.07, 0.33)	
	20	0.00 (0.00, 0.02)	0.01 (0.00, 0.04)	0.02 (0.00, 0.06)	0.40 (0.23, 0.95)	0.15 (0.07, 0.33)	
	30	0.01 (0.00, 0.04)	0.02 (0.00, 0.06)	0.03 (0.01, 0.08)	0.40 (0.23, 0.96)	0.15 (0.07, 0.34)	
	40	0.01 (0.00, 0.05)	0.02 (0.01, 0.07)	0.11 (0.04, 0.22)	0.40 (0.22, 0.96)	0.16 (0.07, 0.35)	
	50	0.01 (0.00, 0.05)	0.10 (0.04, 0.21)	0.26 (0.13, 0.45)	0.40 (0.22, 0.98)	0.16 (0.07, 0.35)	
	60	0.09 (0.03, 0.21)	0.26 (0.14, 0.47)	0.41 (0.22, 0.71)	0.42 (0.23, 1.03)	0.15 (0.06, 0.36)	
	70	0.19 (0.08, 0.40)	0.36 (0.17, 0.69)	- (- , -)	0.37 (0.18, 1.07)	0.15 (0.05, 0.40)	
80	0.23 (0.07, 0.58)	- (- , -)	- (- , -)	0.23 (0.07, 1.15)	0.17 (0.05, 0.51)		
Hispanic ^b	0	0.00 (0.00, 0.00)	0.00 (0.00, 0.00)	0.00 (0.00, 0.00)	0.81 (0.73, 0.91)	0.24 (0.21, 0.27)	
	10	0.00 (0.00, 0.00)	0.00 (0.00, 0.00)	0.01 (0.00, 0.01)	0.82 (0.74, 0.92)	0.24 (0.21, 0.27)	
	20	0.00 (0.00, 0.00)	0.01 (0.00, 0.01)	0.02 (0.01, 0.02)	0.82 (0.74, 0.92)	0.24 (0.21, 0.27)	
	30	0.00 (0.00, 0.01)	0.02 (0.01, 0.02)	0.07 (0.06, 0.08)	0.82 (0.74, 0.92)	0.24 (0.21, 0.27)	
	40	0.01 (0.01, 0.02)	0.06 (0.05, 0.07)	0.21 (0.18, 0.23)	0.82 (0.74, 0.92)	0.24 (0.21, 0.27)	
	50	0.05 (0.04, 0.06)	0.20 (0.17, 0.22)	0.44 (0.40, 0.49)	0.82 (0.74, 0.92)	0.24 (0.21, 0.28)	
	60	0.15 (0.13, 0.17)	0.41 (0.36, 0.45)	0.65 (0.59, 0.71)	0.80 (0.71, 0.90)	0.24 (0.21, 0.28)	
	70	0.28 (0.24, 0.31)	0.54 (0.48, 0.60)	- (- , -)	0.71 (0.62, 0.81)	0.24 (0.21, 0.28)	
80	0.33 (0.28, 0.39)	- (- , -)	- (- , -)	0.54 (0.44, 0.66)	0.21 (0.18, 0.26)		

Devcan Version 7.0.0, April 2008, National Cancer Institute (<http://srab.cancer.gov/devcan/>).

Source: Incidence data are from the SEER 17 areas (San Francisco, Connecticut, Detroit, Hawaii, Iowa, New Mexico, Seattle, Utah, Atlanta, San Jose-Monterey, Los Angeles, Alaska Native Registry, Rural Georgia, California excluding SF/SJM/LA, Kentucky, Louisiana and New Jersey). Mortality data are from the NCHS public use data file for the total US.

^a Underlying incidence and mortality data for American Indian/Alaska Native are based on the CHSDA (Contract Health Service Delivery Area) counties.

^b Hispanic is not mutually exclusive from whites, blacks, Asian/Pacific Islanders, and American Indians/Alaska Natives. Underlying incidence data for Hispanics are based on NHIA and exclude cases from the Alaska Native Registry and Kentucky. Underlying mortality data for Hispanics exclude deaths from Minnesota, New Hampshire and North Dakota.

- Statistic could not be calculated.

A percent or confidence interval value of 0.00 represents a value that is below 0.005.

Table XXVII-10
URINARY BLADDER CANCER

SEER INCIDENCE (Invasive and *In Situ*) AND U.S. MORTALITY
AGE-ADJUSTED RATES AND TRENDS^a
By Race/Ethnicity and Sex

SEER Incidence	Rate 2001-2005 ^b			Seer 13 Areas ^c Trend 1996-2005 AAPC (%)			SEER 9 Areas ^d Trend 1996-2005 AAPC (%)		
	Rate per 100,000 persons			Total	Males	Females	Total	Males	Females
	Total	Males	Females	Total	Males	Females	Total	Males	Females
RACE/ETHNICITY									
All Races	21.2	37.3	9.4	0.0	-0.1	-0.3*	0.1	0.1	0.1*
White	23.0	40.6	10.0	0.1	0.0	-0.2*	0.3	0.1	0.3*
White Hispanic ^e	11.9	20.5	5.6	-0.5	-0.4	-0.5	-	-	-
White Non-Hispanic ^e	24.6	43.4	10.7	0.3*	0.2	0.0	-	-	-
Black	12.8	20.4	7.7	0.5	0.4	0.6	0.2	0.2	0.4
Asian/Pacific Islander	9.3	16.3	4.1	0.1	0.4	0.0	-	-	-
Amer Ind/Alaska Nat ^f	7.1	12.4	3.1	-	-	-	-	-	-
Hispanic ^e	11.7	20.2	5.5	-0.3	-0.4	-0.3	-	-	-
U.S. Mortality ^g									
	Rate 2001-2005			Trend 1996-2005 ^h					
	Rate per 100,000 persons			AAPC (%)					
	Total	Males	Females	Total	Males	Females			
RACE/ETHNICITY									
All Races	4.3	7.5	2.3	-0.2*	-0.5*	-0.6*			
White	4.5	7.9	2.2	0.0	-0.3*	-0.4*			
White Hispanic ^e	2.5	4.1	1.4	-0.2	-0.8	0.5			
White Non-Hispanic ^e	4.6	8.1	2.3	0.2*	0.2	-0.1			
Black	3.7	5.4	2.8	-1.3*	-1.5*	-1.2*			
Asian/Pacific Islander	1.8	2.9	1.0	-1.0	-0.3	-1.7			
Amer Ind/Alaska Nat									
Total U.S.	1.7	2.5	1.2	0.6	-	-			
CHSDA Counties	1.9	2.9	1.2	-	-	-			
Non-CHSDA Counties	1.5	1.9	1.2	-	-	-			
Hispanic ^e	2.4	4.0	1.3	-0.2	-0.7	0.5			

The AAPC is the Average Annual Percent Change over the time interval. The AAPCs are calculated by the Joinpoint Regression Program Version 3.3, April 2008, National Cancer Institute.

Statistic not shown. Rate based on less than 16 cases for the time interval. Trend based on less than 10 cases for at least one year within the time interval.

Rates are age-adjusted to the 2000 US Std Population (19 age groups - Census P25-1130). Trends are based on rates age-adjusted to the 2000 US Std Population (19 age groups - Census P25-1130).

Incidence data used in calculating the 2001-2005 rates are from the SEER 17 areas (San Francisco, Connecticut, Detroit, Hawaii, Iowa, New Mexico, Seattle, Utah, Atlanta, San Jose-Monterey, Los Angeles, Alaska Native Registry, Rural Georgia, California excluding SF/SJM/LA, Kentucky, Louisiana and New Jersey).

The SEER 13 areas are San Francisco, Connecticut, Detroit, Hawaii, Iowa, New Mexico, Seattle, Utah, Atlanta, San Jose-Monterey, Los Angeles, Alaska Native Registry and Rural Georgia. The 1996-2005 AAPC trends are based on a Joinpoint analysis using diagnosis years 1992-2005.

The SEER 9 areas are San Francisco, Connecticut, Detroit, Hawaii, Iowa, New Mexico, Seattle, Utah, and Atlanta. The 1996-2005 AAPC trends are based on a Joinpoint analysis using diagnosis years 1975-2005.

Hispanic and Non-Hispanic are not mutually exclusive from whites, blacks, Asian/Pacific Islanders, and American Indians/Alaska Natives. Incidence data for Hispanics and Non-Hispanics are based on NHIA and exclude cases from the Alaska Native Registry and Kentucky. The 2001-2005 Hispanic and Non-Hispanic death rates exclude deaths from Minnesota, New Hampshire and North Dakota. The 1996-2005 Hispanic and Non-Hispanic mortality trends exclude deaths from Connecticut, Maine, Maryland, Minnesota, New Hampshire, New York, North Dakota, Oklahoma and Vermont.

Incidence data for American Indian/Alaska Native are based on the CHSDA(Contract Health Service Delivery Area) counties.

US Mortality Files, National Center for Health Statistics, CDC.

The 1996-2005 mortality AAPCs are based on a Joinpoint analysis using years of death 1992-2005.

The APC is significantly different from zero (p<.05).

Table XXVII-11
URINARY BLADDER CANCER

AGE-ADJUSTED SEER INCIDENCE RATES^a
By Registry, Race and Sex

	All Races			Whites			Blacks		
	Total	Males	Females	Total	Males	Females	Total	Males	Females
<u>SEER INCIDENCE RATES^a, 2001-2005</u>									
REGISTRY									
Atlanta & Rural Georgia	16.8	29.7	8.1	19.4	34.8	8.7	10.7	16.2	7.2
Atlanta	16.9	29.6	8.3	19.4	34.6	8.9	11.0	16.3	7.6
Rural Georgia	16.0	32.0	4.9	19.9	39.0	-	7.7	-	-
California	19.4	34.4	8.3	21.2	37.6	9.0	13.5	22.0	7.6
Greater Bay Area	18.7	32.6	8.5	22.0	38.1	10.0	12.4	20.6	6.8
San Francisco-Oakland	18.4	31.8	8.5	22.0	37.9	10.1	11.7	19.2	6.7
San Jose-Monterey	19.3	34.1	8.4	21.9	38.5	9.6	18.8	33.6	-
Los Angeles	18.0	32.5	7.6	19.9	36.0	8.1	14.2	23.7	8.0
Greater California	20.4	35.9	8.7	21.6	38.0	9.1	13.3	20.2	7.8
Connecticut	25.8	44.6	12.5	26.8	46.3	12.9	12.7	19.7	7.9
Detroit	24.3	43.5	11.0	27.1	48.9	11.8	13.3	21.2	8.3
Hawaii	14.6	25.1	6.2	25.2	41.2	11.2	-	-	-
Iowa	22.8	40.6	9.8	22.6	40.3	9.7	9.2	-	-
Kentucky	21.5	38.1	9.8	21.9	39.0	9.9	14.3	22.6	8.8
Louisiana	19.7	35.6	8.7	22.4	40.6	9.4	11.6	19.3	6.7
New Jersey	26.1	45.9	12.2	28.1	49.3	13.0	13.0	19.7	8.8
New Mexico	16.3	28.0	7.0	17.4	29.8	7.5	-	-	-
Seattle-Puget Sound	24.6	43.1	10.6	26.0	45.4	11.1	15.7	23.2	9.1
Utah	16.4	29.1	6.4	16.7	29.5	6.5	-	-	-
9 SEER Areas ^b	21.2	37.2	9.5	23.4	40.9	10.4	12.4	19.6	7.7
11 SEER Areas ^b	20.4	36.0	9.0	22.5	39.8	9.8	13.0	20.9	7.8
13 SEER Areas ^b	20.4	36.0	9.0	22.5	39.8	9.8	12.9	20.8	7.7
17 SEER Areas ^b	21.2	37.3	9.4	23.0	40.6	10.0	12.8	20.4	7.7

^a Rates are per 100,000 and are age-adjusted to the 2000 US Std Population (19 age groups - Census P25-1130)

^b The SEER 9 areas are San Francisco, Connecticut, Detroit, Hawaii, Iowa, New Mexico, Seattle, Utah and Atlanta.

The SEER 11 areas comprise the SEER 9 areas plus San Jose-Monterey and Los Angeles.

The SEER 13 areas comprise the SEER 11 areas plus the Alaska Native Registry and Rural Georgia.

The SEER 17 areas comprise the SEER 13 areas plus California excluding SF/SJM/LA, Kentucky, Louisiana and New Jersey.

- Statistic not shown. Rate based on less than 16 cases for the time interval.

Table XXVII-12
URINARY BLADDER CANCER

AGE-ADJUSTED SEER DEATH RATES^a
By Registry, Race and Sex

	All Races			Whites			Blacks		
	Total	Males	Females	Total	Males	Females	Total	Males	Females
<u>SEER DEATH RATES^a, 2001-2005</u>									
REGISTRY									
Atlanta & Rural Georgia	3.6	5.9	2.2	3.5	6.4	1.8	3.8	4.6	3.5
Atlanta	3.7	6.1	2.3	3.6	6.6	1.8	4.0	4.8	3.6
Rural Georgia	-	-	-	-	-	-	-	-	-
California	4.1	7.1	2.1	4.5	7.8	2.2	4.3	5.9	3.3
Greater Bay Area	3.8	6.7	1.9	4.3	7.7	2.1	4.6	6.2	3.6
San Francisco-Oakland	4.1	6.9	2.2	4.6	7.9	2.4	4.9	6.6	3.8
San Jose-Monterey	3.4	6.3	1.4	3.9	7.1	1.7	-	-	-
Los Angeles	3.8	6.5	1.9	4.2	7.4	2.0	4.1	6.1	2.9
Greater California	4.4	7.5	2.3	4.7	7.9	2.3	4.3	5.4	3.7
Connecticut	4.7	8.4	2.3	4.8	8.7	2.4	2.5	4.7	-
Detroit	4.1	7.3	2.0	4.2	7.8	1.9	3.6	5.3	2.6
Hawaii	2.6	4.2	1.5	3.2	5.2	1.8	-	-	-
Iowa	4.0	7.1	2.1	4.1	7.2	2.2	-	-	-
Kentucky	4.5	7.6	2.5	4.4	7.7	2.4	5.1	7.5	3.8
Louisiana	3.9	6.7	2.2	4.1	7.2	2.1	3.5	5.1	2.6
New Jersey	4.8	8.2	2.7	5.1	8.8	2.7	3.6	4.4	3.1
New Mexico	3.9	6.1	2.2	4.1	6.4	2.4	-	-	-
Seattle-Puget Sound	4.6	8.0	2.3	4.8	8.2	2.3	4.5	-	-
Utah	3.4	6.4	1.1	3.4	6.5	1.2	-	-	-
9 SEER Areas ^b	4.1	7.1	2.1	4.3	7.6	2.1	3.8	5.2	3.0
11 SEER Areas ^b	4.0	6.9	2.0	4.3	7.5	2.1	3.9	5.4	2.9
13 SEER Areas ^b	4.0	6.9	2.0	4.3	7.6	2.1	3.8	5.4	2.9
17 SEER Areas ^b	4.2	7.2	2.2	4.5	7.8	2.2	3.8	5.3	3.0
Total U.S.	4.3	7.5	2.3	4.5	7.9	2.2	3.7	5.4	2.8

^a US Mortality Files, National Center for Health Statistics, Centers for Disease Control and Prevention. Rates are per 100,000 and are age-adjusted to the 2000 US Std Population (19 age groups - Census P25-1130).

^b The SEER 9 areas are San Francisco, Connecticut, Detroit, Hawaii, Iowa, New Mexico, Seattle, Utah and Atlanta.

The SEER 11 areas comprise the SEER 9 areas plus San Jose-Monterey and Los Angeles.

The SEER 13 areas comprise the SEER 11 areas plus the Alaska Native Registry and Rural Georgia.

The SEER 17 areas comprise the SEER 13 areas plus California excluding SF/SJM/LA, Kentucky, Louisiana and New Jersey.

- Statistic not shown. Rate based on less than 16 cases for the time interval.

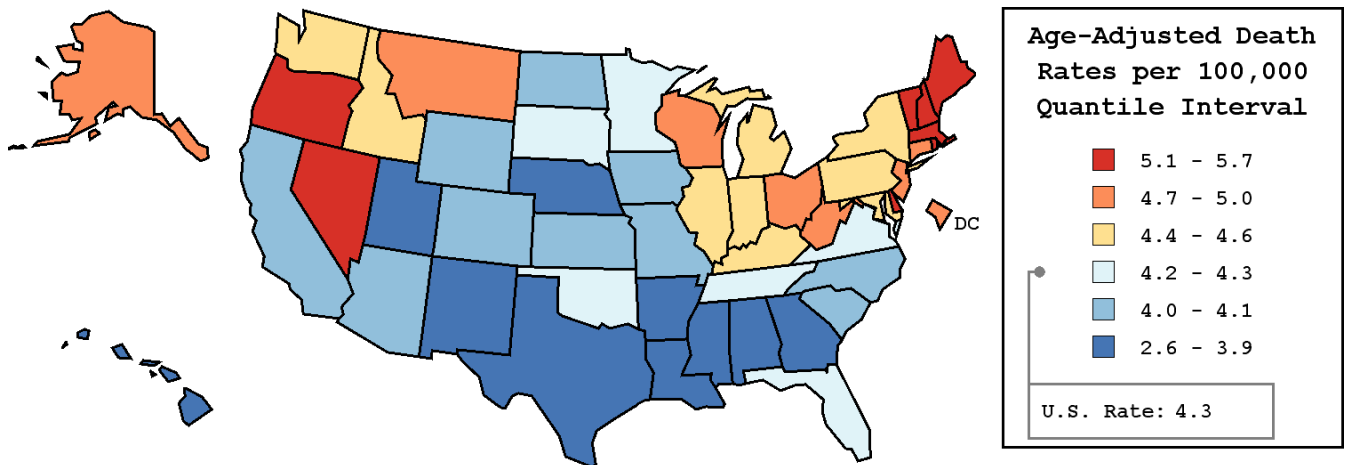
Table XXVII-13
URINARY BLADDER CANCER (Invasive)

AVERAGE ANNUAL AGE-ADJUSTED CANCER DEATH^a RATES BY STATE, ALL RACES, 2001-2005

Males and Females

State	Rate	SE	Rank	PD
TOTAL U.S.	4.3	0.02		
High Five States				
Maine	5.7 ^b	0.27	(01)	32.6 ^c
Delaware	5.6	0.36	(02)	30.2 ^c
Vermont	5.5	0.41	(03)	27.9 ^c
Nevada	5.5 ^b	0.24	(04)	27.9 ^c
Rhode Island	5.3	0.29	(05)	23.3 ^c
Low Five States				
Texas	3.7 ^b	0.07	(47)	-14.0
Alabama	3.6 ^b	0.12	(48)	-16.3 ^c
Mississippi	3.5 ^b	0.16	(49)	-18.6 ^c
Utah	3.4 ^b	0.20	(50)	-20.9 ^c
Hawaii	2.6 ^b	0.20	(51)	-39.5 ^c

State	Rate	SE	Rank	PD	State	Rate	SE	Rank	PD
Alabama	3.6 ^b	0.12	(48)	-16.3 ^c	Montana	4.7	0.30	(14)	9.3
Alaska	4.9	0.59	(10)	14.0	Nebraska	3.7	0.20	(46)	-14.0
Arizona	4.1	0.12	(35)	-4.7	Nevada	5.5 ^b	0.24	(04)	27.9 ^c
Arkansas	3.9	0.16	(42)	-9.3	New Hampshire	5.1	0.28	(07)	18.6 ^c
California	4.1 ^b	0.05	(33)	-4.7	New Jersey	4.8 ^b	0.10	(12)	11.6
Colorado	4.0	0.15	(39)	-7.0	New Mexico	3.9	0.21	(45)	-9.3
Connecticut	4.7	0.15	(16)	9.3	New York	4.4	0.07	(23)	2.3
Delaware	5.6	0.36	(02)	30.2 ^c	North Carolina	4.0	0.10	(36)	-7.0
D.C.	4.8	0.40	(13)	11.6	North Dakota	4.0	0.32	(41)	-7.0
Florida	4.3	0.06	(27)	0.0	Ohio	5.0 ^b	0.09	(09)	16.3 ^c
Georgia	3.9 ^b	0.11	(43)	-9.3	Oklahoma	4.2	0.15	(31)	-2.3
Hawaii	2.6 ^b	0.20	(51)	-39.5 ^c	Oregon	5.1 ^b	0.16	(08)	18.6 ^c
Idaho	4.4	0.26	(24)	2.3	Pennsylvania	4.6 ^b	0.08	(17)	7.0
Illinois	4.4	0.08	(25)	2.3	Rhode Island	5.3	0.29	(05)	23.3 ^c
Indiana	4.4	0.12	(22)	2.3	South Carolina	4.0	0.14	(38)	-7.0
Iowa	4.0	0.15	(37)	-7.0	South Dakota	4.3	0.31	(26)	0.0
Kansas	4.1	0.17	(32)	-4.7	Tennessee	4.3	0.12	(29)	0.0
Kentucky	4.5	0.15	(21)	4.7	Texas	3.7 ^b	0.07	(47)	-14.0
Louisiana	3.9	0.14	(44)	-9.3	Utah	3.4 ^b	0.20	(50)	-20.9 ^c
Maine	5.7 ^b	0.27	(01)	32.6 ^c	Vermont	5.5	0.41	(03)	27.9 ^c
Maryland	4.6	0.13	(19)	7.0	Virginia	4.3	0.11	(28)	0.0
Massachusetts	5.1 ^b	0.12	(06)	18.6 ^c	Washington	4.6	0.13	(20)	7.0
Michigan	4.6	0.10	(18)	7.0	West Virginia	4.7	0.21	(15)	9.3
Minnesota	4.2	0.13	(30)	-2.3	Wisconsin	4.8 ^b	0.13	(11)	11.6
Mississippi	3.5 ^b	0.16	(49)	-18.6 ^c	Wyoming	4.0	0.41	(40)	-7.0
Missouri	4.1	0.12	(34)	-4.7					



^a US Mortality Files, National Center for Health Statistics, Centers for Disease Control and Prevention. Rates are per 100,000 and are age-adjusted to the 2000 US Std Population (19 age groups - Census P25-1130).
^b Difference between state rate and total U.S. rate is statistically significant ($p \leq .0002$).
^c Absolute percent difference between state rate and total U.S. rate is 15% or more.
 SE Standard error of the rate.
 PD Percent difference between state rate and total U.S. rate.

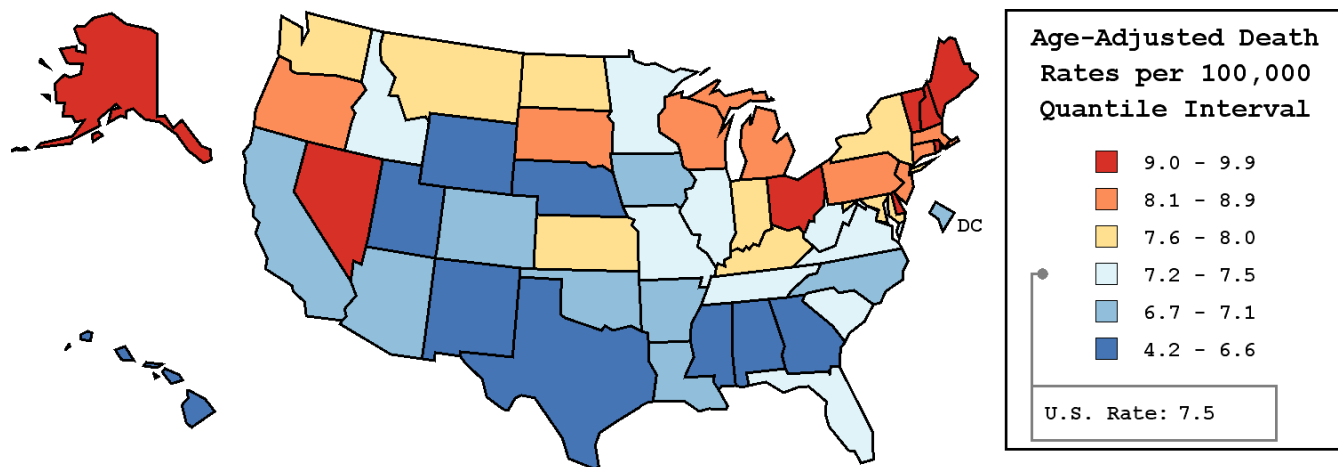
Table XXVII-14
URINARY BLADDER CANCER (Invasive)

AVERAGE ANNUAL AGE-ADJUSTED CANCER DEATH^a RATES BY STATE, ALL RACES, 2001-2005

Males

State	Rate	SE	Rank	PD
TOTAL U.S.	7.5	0.04		
High Five States				
Vermont	9.9	0.88	(01)	32.0 ^c
Delaware	9.8	0.77	(02)	30.7 ^c
New Hampshire	9.7	0.63	(03)	29.3 ^c
Rhode Island	9.6	0.64	(04)	28.0 ^c
Maine	9.5 ^b	0.56	(05)	26.7 ^c
Low Five States				
Utah	6.4	0.43	(47)	-14.7
Mississippi	6.4	0.35	(48)	-14.7
Texas	6.3 ^b	0.14	(49)	-16.0 ^c
New Mexico	6.1 ^b	0.41	(50)	-18.7 ^c
Hawaii	4.2 ^b	0.38	(51)	-44.0 ^c

State	Rate	SE	Rank	PD	State	Rate	SE	Rank	PD
Alabama	6.6	0.28	(45)	-12.0	Montana	8.0	0.61	(17)	6.7
Alaska	9.0	1.26	(08)	20.0 ^c	Nebraska	6.6	0.42	(44)	-12.0
Arizona	6.8	0.24	(39)	-9.3	Nevada	9.1	0.49	(06)	21.3 ^c
Arkansas	6.7	0.34	(41)	-10.7	New Hampshire	9.7	0.63	(03)	29.3 ^c
California	7.1 ^b	0.11	(34)	-5.3	New Jersey	8.2	0.22	(14)	9.3
Colorado	6.9	0.32	(38)	-8.0	New Mexico	6.1 ^b	0.41	(50)	-18.7 ^c
Connecticut	8.4	0.33	(11)	12.0	New York	7.8	0.14	(20)	4.0
Delaware	9.8	0.77	(02)	30.7 ^c	North Carolina	7.0	0.22	(37)	-6.7
D.C.	6.8	0.80	(40)	-9.3	North Dakota	7.6	0.69	(23)	1.3
Florida	7.3	0.12	(32)	-2.7	Ohio	9.1 ^b	0.20	(07)	21.3 ^c
Georgia	6.6 ^b	0.24	(43)	-12.0	Oklahoma	7.0	0.31	(36)	-6.7
Hawaii	4.2 ^b	0.38	(51)	-44.0 ^c	Oregon	8.8 ^b	0.34	(10)	17.3 ^c
Idaho	7.4	0.53	(27)	-1.3	Pennsylvania	8.2 ^b	0.17	(16)	9.3
Illinois	7.5	0.18	(25)	0.0	Rhode Island	9.6	0.64	(04)	28.0 ^c
Indiana	7.7	0.26	(21)	2.7	South Carolina	7.2	0.31	(33)	-4.0
Iowa	7.1	0.32	(35)	-5.3	South Dakota	8.2	0.67	(15)	9.3
Kansas	7.6	0.36	(24)	1.3	Tennessee	7.4	0.26	(30)	-1.3
Kentucky	7.6	0.31	(22)	1.3	Texas	6.3 ^b	0.14	(49)	-16.0 ^c
Louisiana	6.7	0.29	(42)	-10.7	Utah	6.4	0.43	(47)	-14.7
Maine	9.5 ^b	0.56	(05)	26.7 ^c	Vermont	9.9	0.88	(01)	32.0 ^c
Maryland	7.8	0.29	(19)	4.0	Virginia	7.4	0.25	(29)	-1.3
Massachusetts	8.9 ^b	0.26	(09)	18.7 ^c	Washington	7.8	0.26	(18)	4.0
Michigan	8.3 ^b	0.21	(13)	10.7	West Virginia	7.5	0.42	(26)	0.0
Minnesota	7.4	0.27	(28)	-1.3	Wisconsin	8.3	0.27	(12)	10.7
Mississippi	6.4	0.35	(48)	-14.7	Wyoming	6.5	0.81	(46)	-13.3
Missouri	7.3	0.25	(31)	-2.7					



^a US Mortality Files, National Center for Health Statistics, Centers for Disease Control and Prevention. Rates are per 100,000 and are age-adjusted to the 2000 US Std Population (19 age groups - Census P25-1130).
^b Difference between state rate and total U.S. rate is statistically significant ($p \leq .0002$).
^c Absolute percent difference between state rate and total U.S. rate is 15% or more.
SE Standard error of the rate.
PD Percent difference between state rate and total U.S. rate.

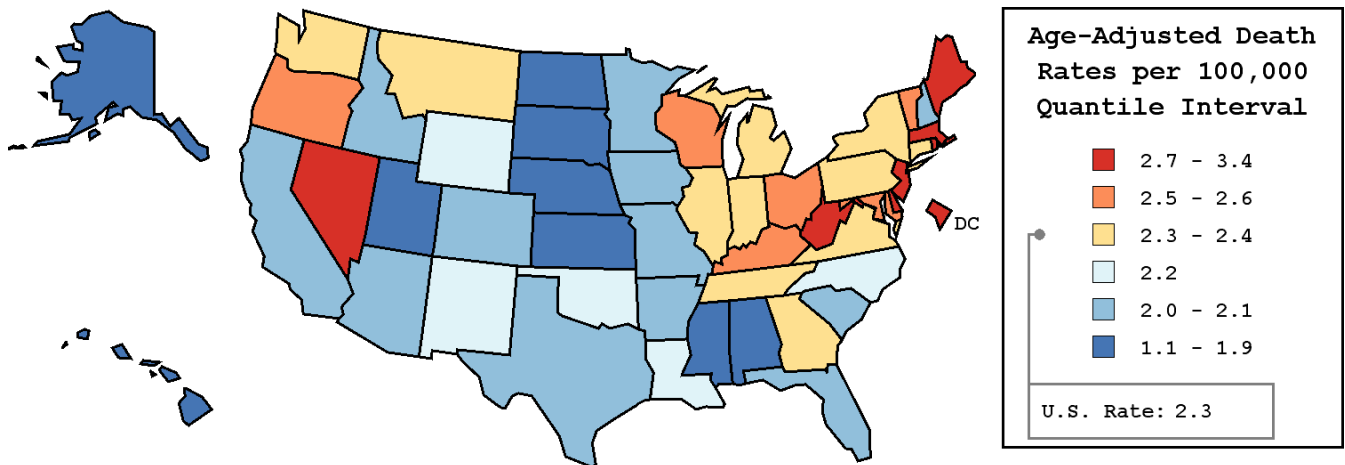
Table XXVII-15
URINARY BLADDER CANCER (Invasive)

AVERAGE ANNUAL AGE-ADJUSTED CANCER DEATH^a RATES BY STATE, ALL RACES, 2001-2005

Females

State	Rate	SE	Rank	PD
TOTAL U.S.	2.3	0.02		
High Five States				
D.C.	3.4	0.43	(01)	47.8 ^c
Maine	2.9	0.26	(02)	26.1 ^c
West Virginia	2.9	0.21	(03)	26.1 ^c
Rhode Island	2.8	0.28	(04)	21.7 ^c
Massachusetts	2.8 ^b	0.11	(05)	21.7 ^c
Low Five States				
Mississippi	1.7 ^b	0.14	(47)	-26.1 ^c
Alabama	1.7 ^b	0.11	(48)	-26.1 ^c
North Dakota	1.5	0.26	(49)	-34.8 ^c
Hawaii	1.5 ^b	0.19	(50)	-34.8 ^c
Utah	1.1 ^b	0.16	(51)	-52.2 ^c

State	Rate	SE	Rank	PD	State	Rate	SE	Rank	PD
Alabama	1.7 ^b	0.11	(48)	-26.1 ^c	Montana	2.3	0.28	(19)	0.0
Alaska	1.7	0.47	(45)	-26.1 ^c	Nebraska	1.9	0.18	(44)	-17.4 ^c
Arizona	2.0	0.11	(39)	-13.0	Nevada	2.7	0.22	(08)	17.4 ^c
Arkansas	2.1	0.15	(38)	-8.7	New Hampshire	2.1	0.24	(35)	-8.7
California	2.1	0.05	(33)	-8.7	New Jersey	2.7 ^b	0.10	(07)	17.4 ^c
Colorado	2.1	0.14	(37)	-8.7	New Mexico	2.2	0.21	(28)	-4.3
Connecticut	2.3	0.14	(21)	0.0	New York	2.4	0.06	(17)	4.3
Delaware	2.7	0.33	(06)	17.4 ^c	North Carolina	2.2	0.09	(27)	-4.3
D.C.	3.4	0.43	(01)	47.8 ^c	North Dakota	1.5	0.26	(49)	-34.8 ^c
Florida	2.1	0.06	(32)	-8.7	Ohio	2.5	0.08	(11)	8.7
Georgia	2.3	0.10	(23)	0.0	Oklahoma	2.2	0.14	(26)	-4.3
Hawaii	1.5 ^b	0.19	(50)	-34.8 ^c	Oregon	2.5	0.15	(12)	8.7
Idaho	2.1	0.24	(34)	-8.7	Pennsylvania	2.4	0.07	(15)	4.3
Illinois	2.4	0.08	(18)	4.3	Rhode Island	2.8	0.28	(04)	21.7 ^c
Indiana	2.4	0.11	(16)	4.3	South Carolina	2.0	0.13	(42)	-13.0
Iowa	2.1	0.14	(31)	-8.7	South Dakota	1.7	0.26	(46)	-26.1 ^c
Kansas	1.9	0.15	(43)	-17.4 ^c	Tennessee	2.3	0.11	(22)	0.0
Kentucky	2.5	0.14	(14)	8.7	Texas	2.0 ^b	0.06	(41)	-13.0
Louisiana	2.2	0.13	(30)	-4.3	Utah	1.1 ^b	0.16	(51)	-52.2 ^c
Maine	2.9	0.26	(02)	26.1 ^c	Vermont	2.5	0.36	(13)	8.7
Maryland	2.6	0.13	(09)	13.0	Virginia	2.3	0.11	(20)	0.0
Massachusetts	2.8 ^b	0.11	(05)	21.7 ^c	Washington	2.3	0.12	(24)	0.0
Michigan	2.3	0.09	(25)	0.0	West Virginia	2.9	0.21	(03)	26.1 ^c
Minnesota	2.1	0.12	(36)	-8.7	Wisconsin	2.5	0.12	(10)	8.7
Mississippi	1.7 ^b	0.14	(47)	-26.1 ^c	Wyoming	2.2	0.41	(29)	-4.3
Missouri	2.0	0.11	(40)	-13.0					



^a US Mortality Files, National Center for Health Statistics, Centers for Disease Control and Prevention. Rates are per 100,000 and are age-adjusted to the 2000 US Std Population (19 age groups - Census P25-1130).
^b Difference between state rate and total U.S. rate is statistically significant ($p \leq .0002$).
^c Absolute percent difference between state rate and total U.S. rate is 15% or more.
SE Standard error of the rate.
PD Percent difference between state rate and total U.S. rate.

Table XXVII-16
URINARY BLADDER CANCER (Invasive)

Estimated United States Cancer Prevalence Counts^a on January 1, 2005
By Race/Ethnicity, Sex and Years Since Diagnosis

Years Since Diagnosis	0 to <5	5 to <10	10 to <15	15 to <20	20 to <25	25 to <30	0 to <15 ^e	0 to <30 ^e	>=30 ^g	Complete ^h
<u>Race/Sex</u>										
All Races ^b	187,611	126,491	84,612	52,902	32,195	16,718	398,715	500,529	20,623	521,152
Males	140,466	93,789	62,886	39,033	23,367	11,352	297,142	370,894	13,400	384,294
Females	47,145	32,702	21,726	13,869	8,828	5,366	101,573	129,635	7,223	136,858
White ^b	174,922	118,854	80,014	50,515	30,891	15,903	373,790	471,099	16,204	487,303
Males	131,715	88,351	59,508	37,286	22,473	10,846	279,574	350,179	10,350	360,529
Females	43,207	30,503	20,506	13,229	8,418	5,057	94,216	120,920	5,854	126,774
Black ^b	7,779	4,423	2,940	1,538	843	414	15,143	17,937	331	18,268
Males	4,884	3,064	2,119	1,136	555	265	10,067	12,022	265	12,287
Females	2,895	1,359	821	402	288	149	5,076	5,915	66	5,981
Asian/Pacific Islander ^c	2,588	1,518	972	+	+	+	5,078	+	+	+
Males	1,999	1,099	737	+	+	+	3,835	+	+	+
Females	589	419	235	+	+	+	1,243	+	+	+
Hispanic ^d	5,767	3,355	2,273	+	+	+	11,395	+	+	+
Males	4,326	2,542	1,698	+	+	+	8,566	+	+	+
Females	1,441	813	575	+	+	+	2,829	+	+	+

Estimated prevalence percent^a on January 1, 2005, of the SEER 11 population diagnosed in the previous 15 years
By Age at Prevalence, Race/Ethnicity and Sex

Age at Prevalence	Age Specific (Crude)										Age-Adjusted ^f
	All Ages	0-9	10-19	20-29	30-39	40-49	50-59	60-69	70-79	80+	All Ages
<u>Race/Sex</u>											
All Races ^c	0.1143%	0.0001%	0.0003%	0.0019%	0.0069%	0.0294%	0.1119%	0.3610%	0.7631%	0.9913%	0.1228%
Males	0.1734%	0.0002%	0.0005%	0.0022%	0.0097%	0.0446%	0.1776%	0.5900%	1.3519%	1.9651%	0.2175%
Females	0.0564%	-	0.0002%	0.0015%	0.0040%	0.0144%	0.0494%	0.1549%	0.3125%	0.4539%	0.0533%
White ^c	0.1367%	0.0001%	0.0003%	0.0023%	0.0082%	0.0338%	0.1279%	0.4169%	0.8689%	1.0806%	0.1388%
Males	0.2061%	0.0002%	0.0004%	0.0027%	0.0113%	0.0501%	0.1994%	0.6729%	1.5294%	2.1762%	0.2446%
Females	0.0673%	-	-	0.0018%	0.0049%	0.0170%	0.0579%	0.1803%	0.3520%	0.4838%	0.0600%
Black ^c	0.0394%	-	-	0.0009%	0.0030%	0.0163%	0.0653%	0.1744%	0.3296%	0.4576%	0.0582%
Males	0.0563%	-	-	-	0.0042%	0.0271%	0.1117%	0.2846%	0.5574%	0.7743%	0.0982%
Females	0.0241%	-	-	-	0.0019%	0.0067%	0.0268%	0.0883%	0.1788%	0.3049%	0.0318%
Asian/Pacific Islander ^c	0.0462%	-	-	0.0007%	0.0021%	0.0122%	0.0379%	0.1218%	0.3185%	0.5692%	0.0533%
Males	0.0716%	-	-	-	0.0034%	0.0211%	0.0646%	0.2118%	0.5636%	1.0041%	0.0937%
Females	0.0224%	-	-	-	-	0.0041%	0.0145%	0.0462%	0.1405%	0.2800%	0.0234%
Hispanic ^d	0.0265%	-	-	0.0008%	0.0042%	0.0149%	0.0492%	0.1525%	0.3517%	0.5126%	0.0579%
Males	0.0384%	-	-	0.0008%	0.0050%	0.0203%	0.0764%	0.2580%	0.6487%	0.9954%	0.1039%
Females	0.0139%	-	-	0.0009%	0.0032%	0.0092%	0.0236%	0.0641%	0.1370%	0.2346%	0.0253%

^a US 2005 cancer prevalence counts are based on 2005 cancer prevalence proportions from the SEER registries and 1/1/2005 US population estimates based on the average of 2004 and 2005 population estimates from the US Bureau of the Census. Prevalence was calculated using the First Malignant Primary Only for a person.

^{b c d} Statistics based on (b) SEER 9 Areas (c) SEER 11 Areas and Rural Georgia (d) NHIA for Hispanic for SEER 11 Areas and Rural Georgia.

^e Maximum limited-duration prevalence: 30 years for 1975-2005 SEER 9 data; 15 years for 1990-2005 SEER 11 data (used to calculate prevalence for Hispanics and Asian Pacific Islanders).

^f Percentages are age-adjusted to the 2000 US Standard Population (19 age groups - Census P25-1130) by 5-year age groups.

^{g h} (g) Cases diagnosed more than 30 years ago were estimated using the completeness index method (Capocaccia et. al. 1997, Merrill et. al. 2000). (h) Complete prevalence is obtained by summing 0 to <30 and >=30.

- Statistic not shown. Statistic based on fewer than 5 cases estimated alive in SEER for the time interval.

+ Not available.

SEER Incidence, Delay Adjusted Incidence and US Death Rates^a Urinary Bladder Cancer, by Race and Sex

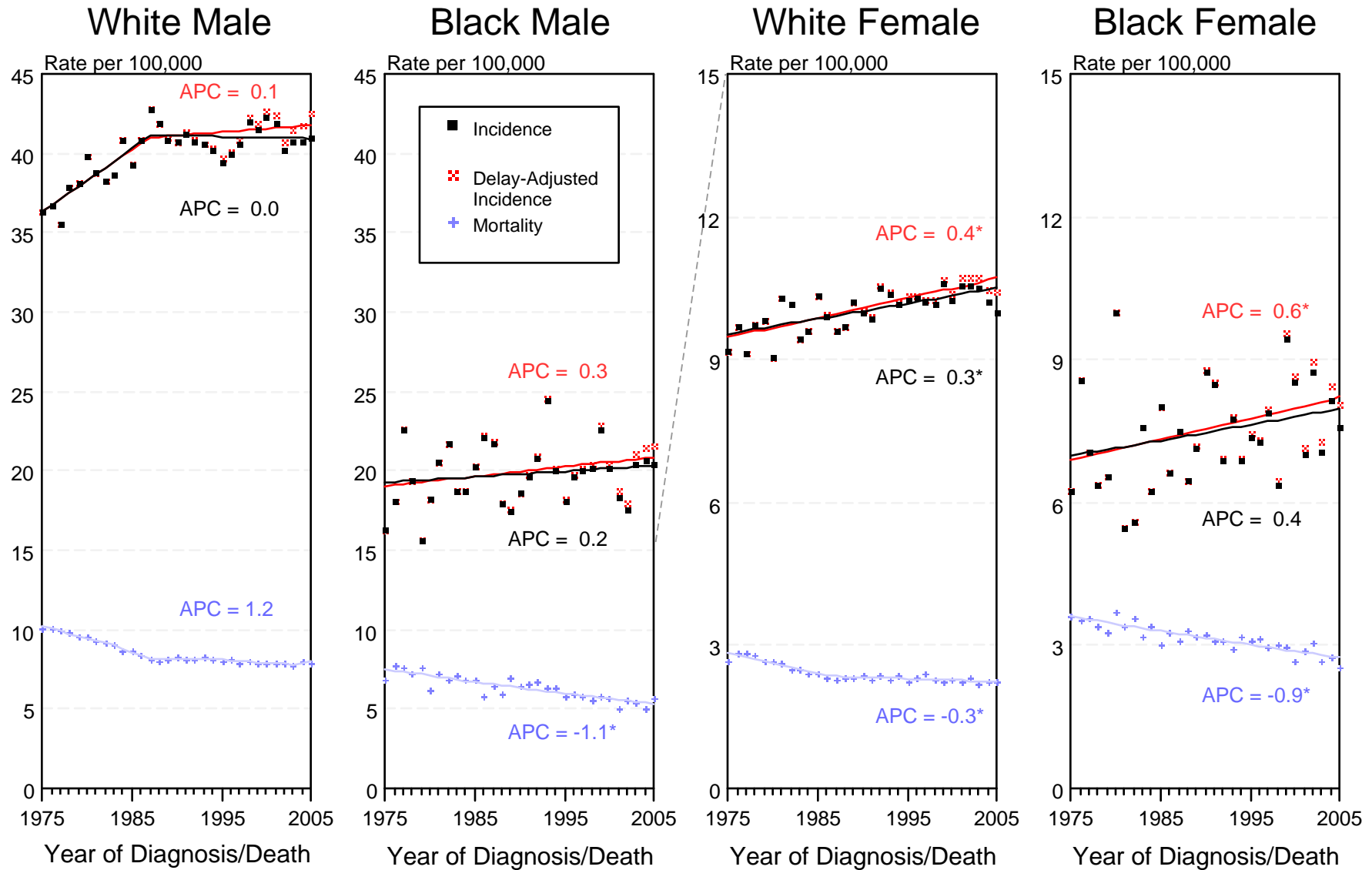


Figure XXVII-1

^a Source: SEER 9 areas and US Mortality Files (National Center for Health Statistics, CDC). Rates are age-adjusted to the 2000 US Std Population (19 age groups - Census P25-1103). Regression lines and APCs are calculated using the Joinpoint Regression Program Version 3.3.1, April 2008, National Cancer Institute. The APC is the Annual Percent Change for the regression line segments. The APC shown on the graph is for the most recent trend.

* The APC is significantly different from zero ($p < 0.05$).

SEER Incidence and US Death Rates^a Urinary Bladder Cancer, Both Sexes

Joinpoint Analyses for Whites and Blacks from 1975-2005

and for Asian/Pacific Islanders, American Indians/Alaska Natives and Hispanics from 1992-2005

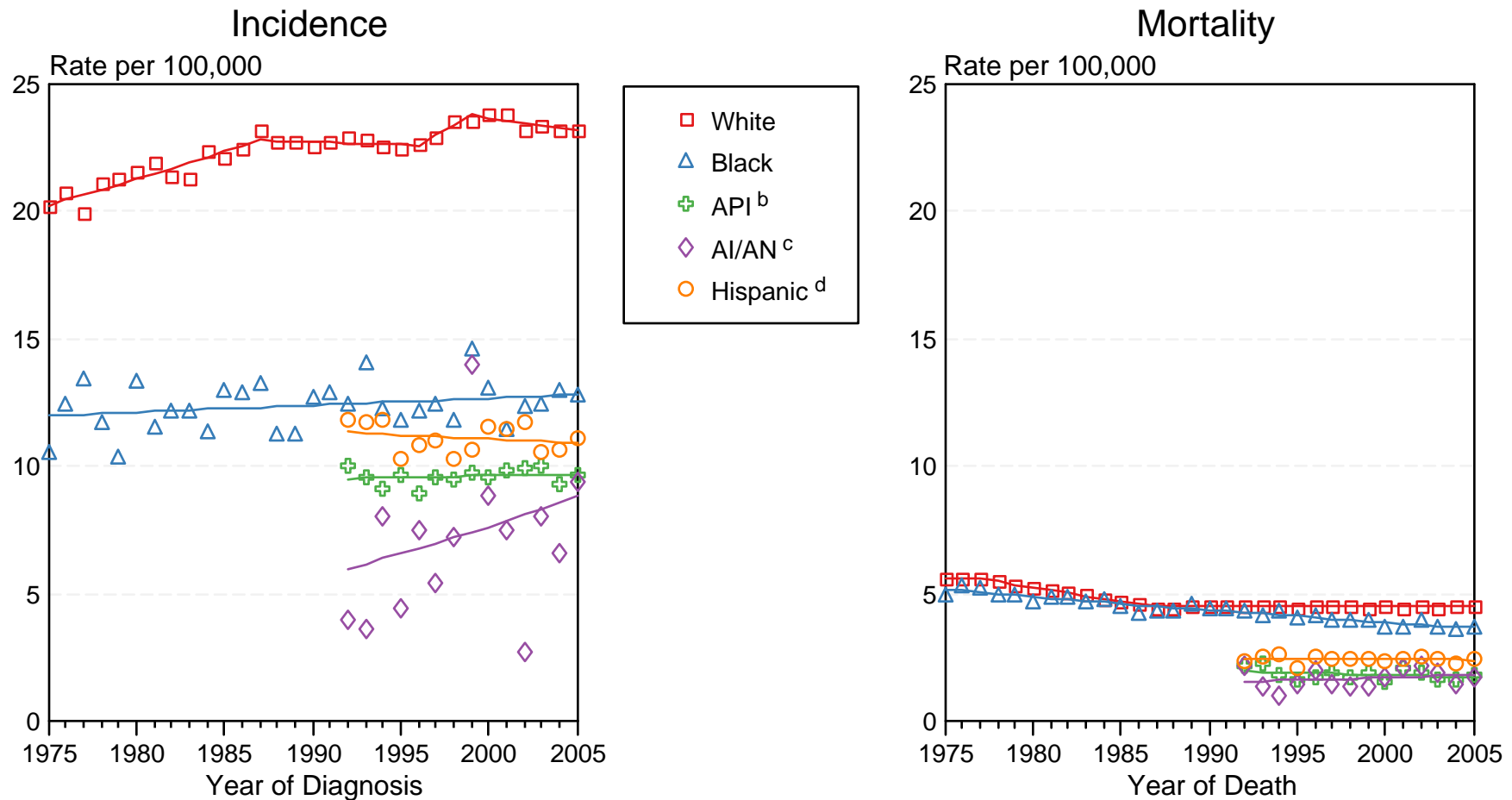


Figure XXVII-2

Source: Incidence data for whites and blacks are from the SEER 9 areas (San Francisco, Connecticut, Detroit, Hawaii, Iowa, New Mexico, Seattle, Utah, Atlanta).

Incidence data for Asian/Pacific Islanders, American Indians/Alaska Natives and Hispanics are from the SEER 13 Areas (SEER 9 Areas, San Jose-Monterey, Los Angeles, Alaska Native Registry and Rural Georgia). Mortality data are from US Mortality Files, National Center for Health Statistics, CDC.

^a Rates are age-adjusted to the 2000 US Std Population (19 age groups - Census P25-1103).

Regression lines are calculated using the Joinpoint Regression Program Version 3.3.1, April 2008, National Cancer Institute. Joinpoint analyses for Whites and Blacks during the 1975-2005 period allow a maximum of 4 joinpoints. Analyses for other ethnic groups during the period 1992-2005 allow a maximum of 3 joinpoints.

^b API = Asian/Pacific Islander.

^c AI/AN = American Indian/Alaska Native. Rates for American Indian/Alaska Native are based on the CHSDA(Contract Health Service Delivery Area) counties.

^d Hispanic is not mutually exclusive from whites, blacks, Asian/Pacific Islanders, and American Indians/Alaska Natives. Incidence data for Hispanics are based on NHIA and exclude cases from the Alaska Native Registry. Mortality data for Hispanics exclude cases from Connecticut, Maine, Maryland, Minnesota, New Hampshire, New York, North Dakota, Oklahoma, and Vermont.