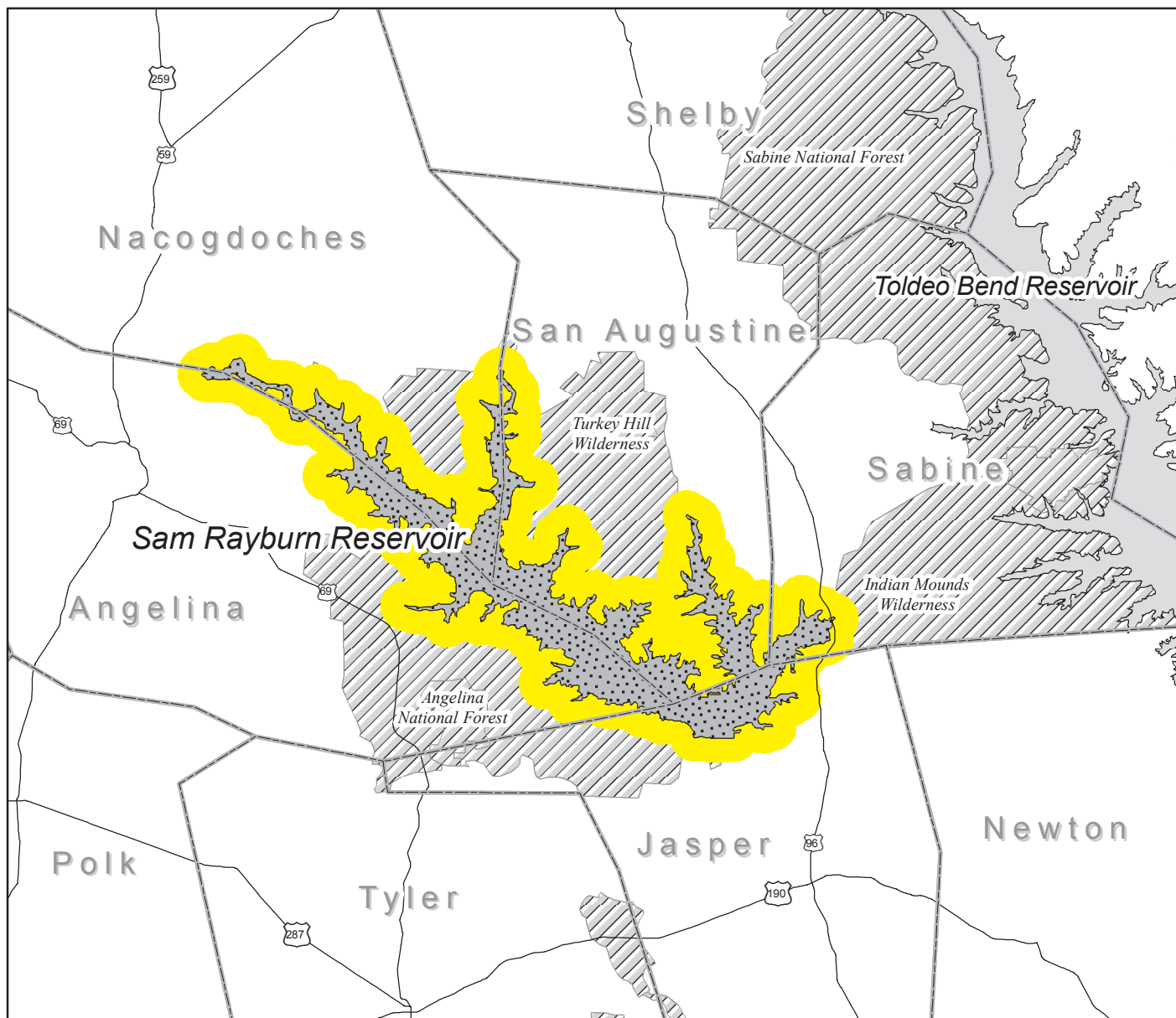


Sam Rayburn Reservoir

Angelina, Jasper, Nacogdoches, Sabine, and San Augustine Counties
ADV-12 Issued November 2, 1995



Advisory Area:
Sam Rayburn Reservoir

Contaminant of Concern:
Mercury (Hg)

Species Affected:
Freshwater drum and largemouth bass

Consumption Advice:

1. Adults should limit consumption of freshwater drum and largemouth bass to no more than two (2) eight ounce (8 oz) meals per month.
2. Children under twelve (12) years old should limit consumption of freshwater drum and largemouth bass to no more than two (2) four ounce (4 oz) meals per month.

