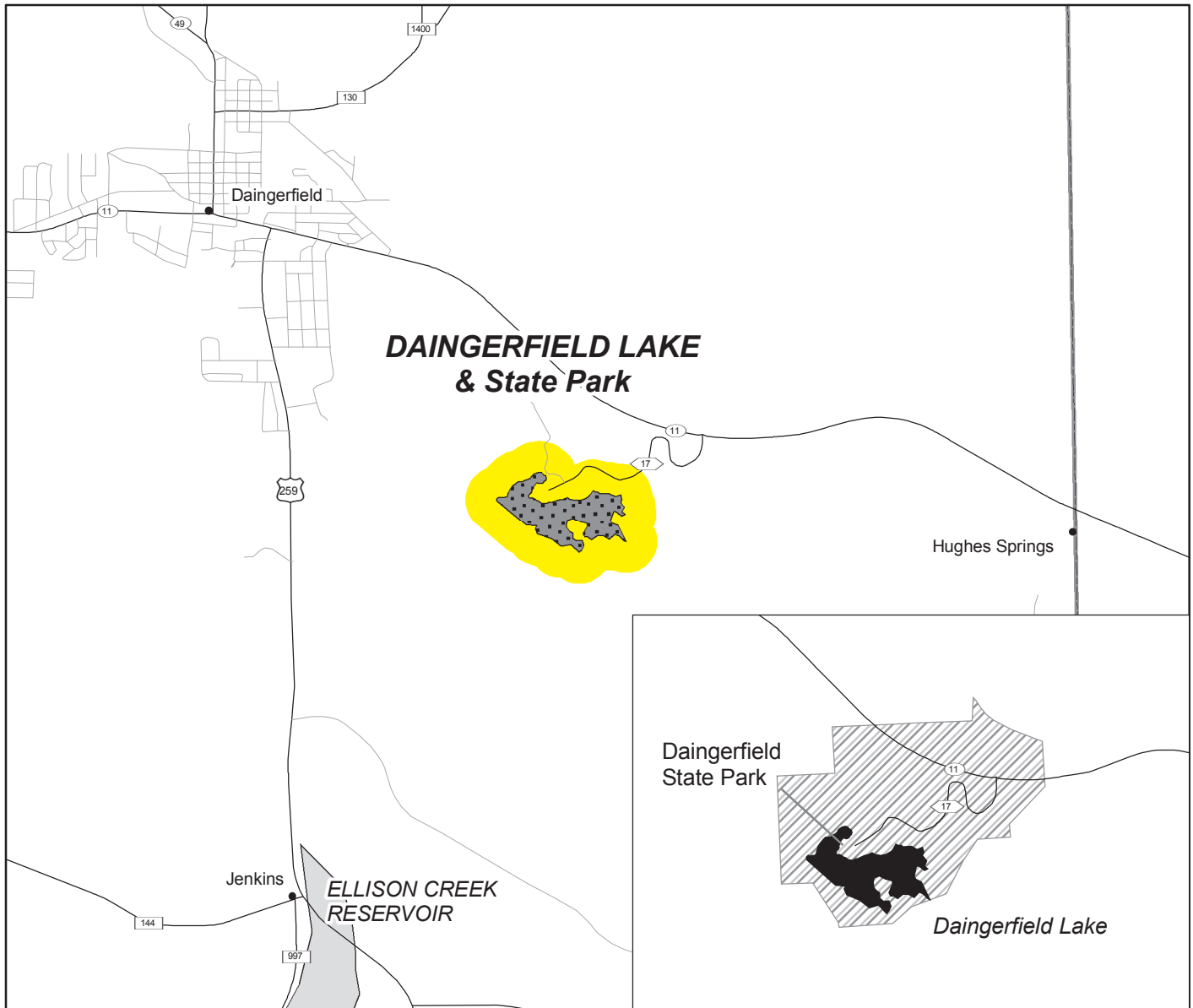


# Lake Daingerfield

Morris County

ADV-22 Issued March 13, 2002



**Advisory Area:**  
Lake Daingerfield



**Contaminant of Concern:**  
Mercury (Hg)

**Species Affected:**  
Largemouth bass

**Consumption Advice:**

1. Adults should limit consumption of largemouth bass to no more than two (2) eight ounce (8 oz) meals per month.
2. Children under twelve (12) years old should limit consumption of largemouth bass to no more than two (2) four ounce (4 oz) meals per month.

