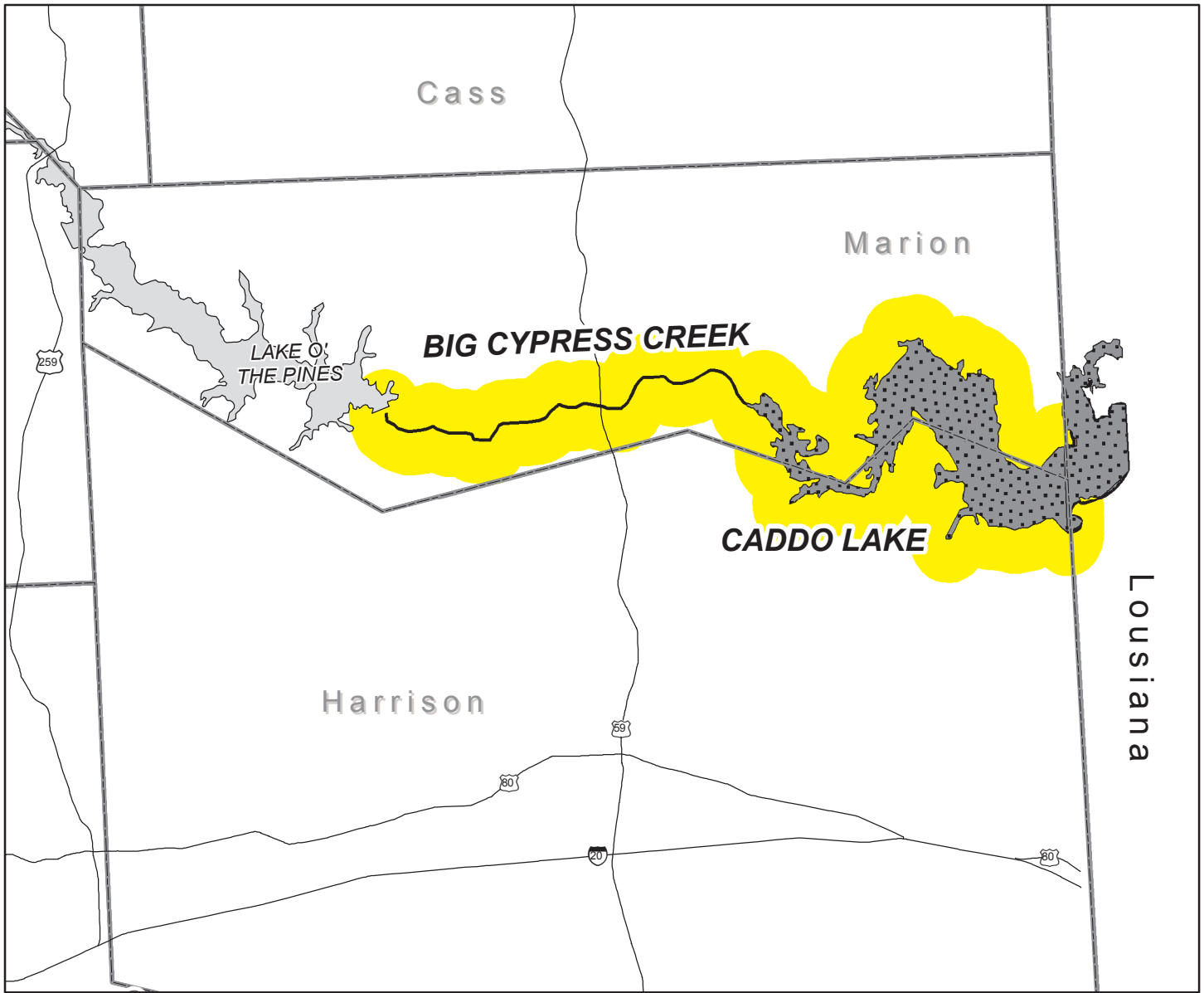


Big Cypress Creek and Caddo Lake

Harrison and Marion Counties

ADV-12 Issued November 2, 1995



Advisory Area:

Big Cypress Creek (downstream of Lake O' The Pines) and all Texas waters of Caddo Lake

Contaminant of Concern:

Mercury (Hg)

Species Affected:

Freshwater drum and largemouth bass

Consumption Advice:

1. Adults should limit consumption of freshwater drum and largemouth bass to no more than two (2) eight ounce (8 oz) meals per month.
2. Children under twelve (12) years old should limit consumption of freshwater drum and largemouth bass to no more than two (2) four ounce (4 oz) meals per month.

