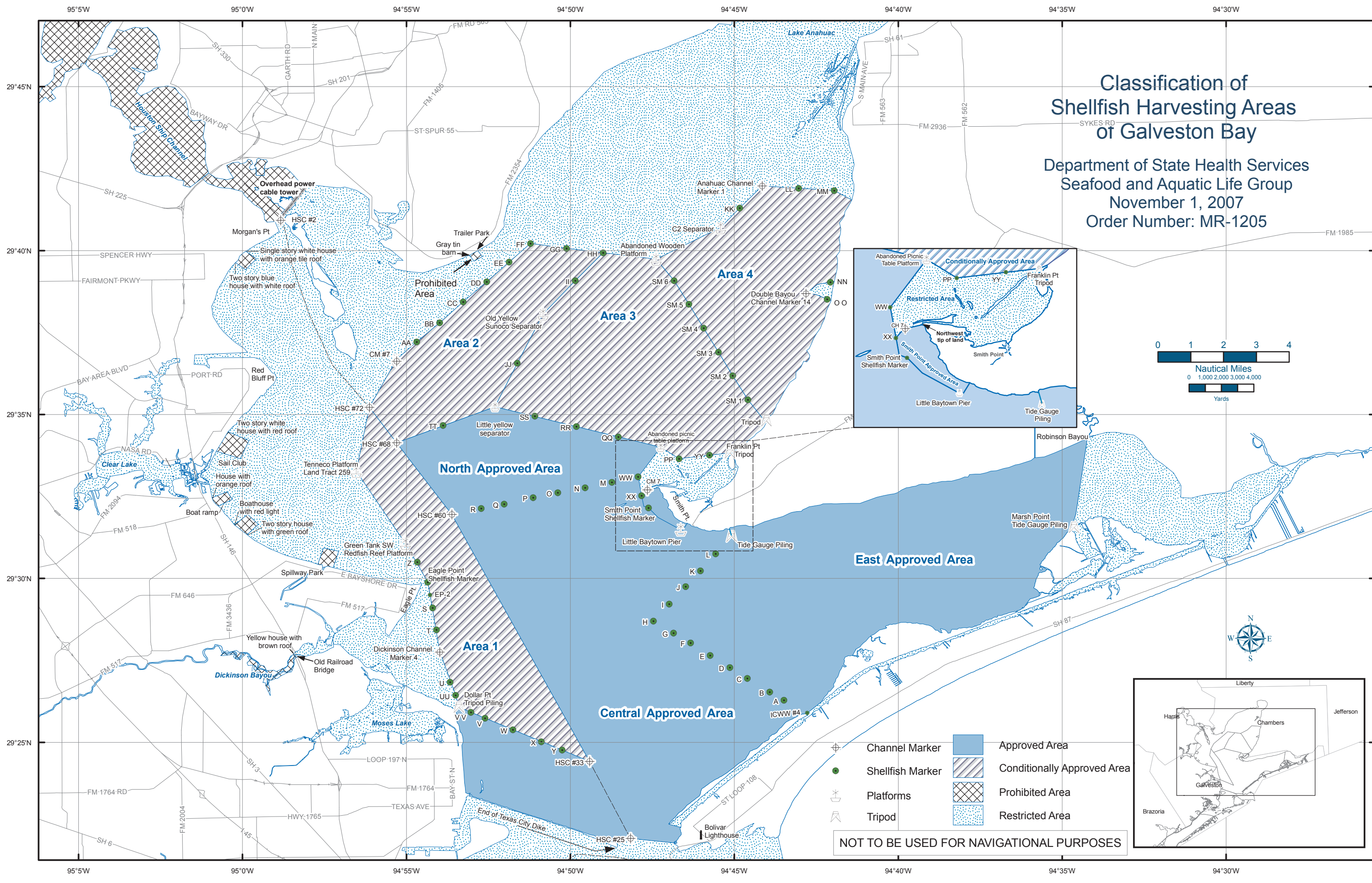


# Classification of Shellfish Harvesting Areas of Galveston Bay

Department of State Health Services  
 Seafood and Aquatic Life Group  
 November 1, 2007  
 Order Number: MR-1205



NOT TO BE USED FOR NAVIGATIONAL PURPOSES

## CLASSIFICATION OF SHELLFISH HARVESTING AREAS

### OF GALVESTON BAY

#### TEXAS DEPARTMENT OF STATE HEALTH SERVICES SEAFOOD AND AQUATIC LIFE GROUP

DATE: NOVEMBER 1, 2007

ORDER NUMBER: MR-1205

The status of shellfish growing waters in Texas estuaries is subject to change by the Texas Department of State Health Services at any time. These changes may be due to high rainfall and runoff, flooding, hurricanes and other extreme weather conditions, major spills, red tides, or the failure or inefficient operation of wastewater treatment facilities. Current status of shellfish harvesting areas may be obtained from your local Texas Parks and Wildlife Department office or by calling, **toll-free, 1-800-685-0361**.

PROHIBITED AREAS: All areas not specifically designated as Prohibited, Restricted, Conditionally Approved, or Approved are classified as Prohibited and are closed for the harvesting of molluscan shellfish.

That area located off Umbrella Point between the east end of trailer park and the gray tin barn out to 300 yards offshore.

That area of the Houston Ship Channel and Tabbs Bay upstream of a line from the easternmost overhead power cable tower at Evergreen Point, to Cedar Bayou Channel Marker 8, to Cedar Bayou Channel Marker 2, to Morgans Point.

That area between the single story white house with the orange tile roof and the two story blue house with the white roof out to 300 yards offshore.

That area between the two story white house with the red roof and sail club out to 300 yards offshore.

That area between the house with orange roof and boat ramp out to 300 yards offshore.

That area between the boat house with red light and the two story house with green roof out to 300 yards offshore.

That area out to 400 yards offshore of Spillway Park.

That area of Dickinson Bayou from the old railroad bridge upstream to a line across the bayou perpendicular to the shoreline from the yellow house with the brown roof.

That area 150 yards east and west of ditch and out to 300 yards offshore.

All residential subdivision channels and harbor areas up to a radius of 300 yards offshore from the shoreline where the channels become land bound.

All areas within a 50 yard radius of recreational cabins and houseboats located in the bay.

All marked areas around transient or temporarily occupied structures (such as manned drilling rigs) which are potential pollution sources, but which are not indicated on this map because of their transient nature. These areas are described by separate Marine Order. Details can be obtained from the Texas Department of Health or the Texas Parks and Wildlife Department.

RESTRICTED AREAS: (Closed to the harvesting of shellfish for direct marketing)

The area of East Bay east of a line from the entrance to Robinson Bayou south to tide gauge at Marsh Point.

All of the Intracoastal Waterway where it becomes land bound at Bolivar Peninsula.

All area South of a line beginning at the Port Bolivar Lighthouse, to Houston Ship Channel (HSC) Marker 25, to the end of the Texas City Dike. All areas excluding the prohibited areas described above and inshore of a line from the Dollar Point shoreline, to the tripod piling off Dollar Point, to GAL Shellfish Marker (SM) UU, to GAL SM U, to Dickinson Channel Marker 4, to GAL SM T, to GAL SM S, to Eagle Point Shellfish Marker 2, to Eagle Point Shellfish Marker, to GAL SM Z, to American Exploration Co. Southwest Redfish Reef Platform "Green Tank" (29E31'03.5"N, 94E47'02.1"W), to Tenneco Platform State Land Tract 259(29E33'16.7"N, 94E56'32.7"W), to HSC Marker 72, to Five Mile Cut Channel Marker 5, to GAL SM AA, to GAL SM BB, to GAL SM CC, to GAL SM DD, to GAL SM EE, to GAL SM FF, to GAL SM GG, to GAL SM HH, to abandoned wooden platform(29E39'43.5"N,94E47'22.3"W), to Separator C-2(29E40'41.4"N,94E45'24.0"W), to GAL SM KK, to Anahuac Channel Marker 1, to GAL SM LL to GAL SM MM, due east to the shore. All areas inside a line starting at the shoreline 1/4 statute miles north of the Double Bayou Channel entrance, due west to GAL SM NN, to Double Bayou Channel Marker 14, to GAL SM OO, due east to the shore 1/4 statute miles below the Double Bayou Channel entrance. All areas inside a line from the shore starting at the tripod on franklin point, to GAL SM YY, to GAL SM PP, to the abandoned "Picnic Table" platform(29E34'00.5"N,94E47'15.6"W), to GAL SM WW, to SM XX, to northwest tip of Smith Point, along the shoreline eastward, returning to the tripod on Franklin Point.

CONDITIONALLY APPROVED AREAS: (Subject to status changes based upon meteorological or hydrological conditions) If unsure of current status, contact your local Texas Parks and Wildlife Department office, or call, toll-free, 1-800-685-0361.

Area 1  
Area 1 is located inside of a line beginning at HSC Marker 33, following the HSC, to HSC Marker 68, to HSC Marker 72, to Tenneco Platform State Land Tract 259(29E33'16.7"N,94E56'32.7"W), to American Exploration Co. Southwest Redfish Reef Platform "Green Tank"(29E31'03.5"N, 94E47'02.1"W), to GAL SM Z, to Eagle Point Shellfish Marker 2, to Eagle Point Shellfish Marker, to GAL SM S, to GAL SM T, to Dickinson Channel Marker 4, to GAL SM U, to GAL SM UU, to piling tripod off Dollar Point, to GAL SM VV, to GAL SM V, to GAL SM W, to GAL SM X, to GAL SM Y, and returning to HSC Marker 33.

Area 2  
Area 2 is located inside of a line beginning at HSC Marker 72, to HSC Marker 68, to GAL SM TT, to the Little Yellow Separator(29E35'14.6"N, 94E52'17.8"W), to GAL SM JJ, to Sunoco Separator 1 "Old Yellow"(29E38'05.5"N, 94E50'49.1"W), to GAL SM II, to GAL SM GG, to GAL SM FF, to GAL SM EE, to GAL SM DD, to GAL SM CC, to GAL SM BB, to GAL SM AA, to Channel Marker # 7 (29E36'40.6"N, 94E55'18.4"W), and returning to HSC Marker 72.

Area 3  
Area 3 is located inside of a line from the abandoned "Picnic Table" platform(29E34'00.5"N, 94E47'15.6"W), to GAL SM QQ, to GAL SM RR, to GAL SM SS, to the Little Yellow Separator(29E35'14.6"N, 94E52'17.8"W), to GAL SM JJ, to the Sunoco Separator 1 "Old Yellow"(29E38'05.5"N, 94E50'49.1"W), to GAL SM II, to GAL SM HH, to the Abandoned Wooden Platform(29E39'43.5"N, 94E47'22.3"W), to GAL SM 6, to GAL SM 5, to GAL SM 4 to GAL SM 3, to GAL SM 2, to GAL SM 1, to the piling tripod in the Trinity River Channel, southwest along the shoreline, to the piling tripod located on Franklin Point in the Trinity River Channel, to GAL SM YY, to GAL SM PP, and returning to the abandoned "Picnic Table" platform(29E34'00.5"N, 94E47'15.6"W).

Area 4  
Area 4 is located inside of a line from the Abandoned Wooden Platform(29E39'43.5"N, 94E47'22.3"W), to Separator C-2(29E40'41.4"N, 94E45'24.0"W), to GAL SM KK, to Anahuac Channel Marker 1, to GAL SM LL, to GAL SM MM, due east to the shore, southward along the shoreline to 1/4 statute miles north of the Double Bayou Channel entrance, due west to GAL SM NN, to Double Bayou Channel Marker 14, to GAL SM OO, due east to the shore 1/4 statute miles below the Double Bayou Channel entrance, southwest along the shoreline, to the tripod piling in the Trinity River Channel, to GAL SM I, to GAL SM 2, to GAL SM 3, to GAL SM 4, to GAL SM 5, to GAL SM 6, and returning to the Abandoned Wooden Platform(29E39'43.5"N, 94E47'22.3"W)

APPROVED AREAS: The approved growing waters are divided into three areas. For current status, contact your local Texas Parks and Wildlife Department office, or call, toll-free, 1-800-685-0361.

Smith Point Approved Area  
The Smith Point Approved Area is all area inside of a line beginning at the northwest tip of Smith Point, to Trinity River Channel Marker # 7, to SM XX, to the Smith Point Shellfish Marker, to the end of the Little Baytown Pier, to the shore, then following the shoreline to the northwest tip of Smith Point.

North Approved Area  
The North Approved Area is all area inside of a line beginning at the abandoned "Picnic Table" platform(29E34'00.5"N, 94E47'15.6"W), to GAL SM WW, to GAL SM MM, to GAL SM N, to GAL SM O, to GAL SM P, to GAL SM Q, to GAL SM R, to HSC Marker 68, to GAL SM TT, to the Little Yellow Separator(29E35'14.6"N, 94E52'17.8"W), to GAL SM SS, to GAL SM RR, GAL SM QQ, and returning to the abandoned "Picnic Table" platform(29E34'00.5"N, 94E47'15.6"W).

Central Approved Area  
The Central Approved Area is all area inside of a line beginning at GAL SM WW, to GAL SM XX, to Smith Point Shellfish Marker, to the end of Little Baytown Pier(29E31'38.0"N, 94E46'37.8"W), to the shore, eastward along the shoreline to the Tide Gauge Piling, to GAL SM L, to GAL SM K, to GAL SM J, to GAL SM I, to GAL SM H, to GAL SM G, to GAL SM F, to GAL SM E, to GAL SM D, to GAL SM C, to GAL SM B, to GAL SM A, to Intracoastal Waterway (ICWW) Marker 4 at Sievers Cove, along the shoreline to the Port Bolivar Lighthouse, to HSC Marker 25, to the end of the Texas City Dike, along the north shoreline of the Texas City Dike, to the Texas City levee and along the levee shoreline, to the tripod piling off Dollar Point, to GAL SM VV, to GAL SM V, to GAL SM W, to GAL SM X, to GAL SM Y, to HSC Marker 33, to HSC Marker 60, to GAL SM R, to GAL SM Q, to GAL SM O, to GAL SM N, to GAL SM M, and returning to GAL SM WW.

East Approved Area  
The East Approved Area is all area inside of a line beginning at Intracoastal Waterway Channel Marker 4 at Sievers Cove, to GAL SM A, to GAL SM B, to GAL SM C, to GAL SM D, to GAL SM E, to GAL SM F, to GAL SM G, to GAL SM H, to GAL SM I, to GAL SM J, to GAL SM K, to GAL SM L, to the Tide Gauge Piling, along the shoreline to the mouth of Robinson Bayou, south to the tide gauge at Marsh Point, then following the shoreline to Intracoastal Waterway Channel Marker 4 at Sievers Cove.

CLASSIFICATION OF SHELLFISH HARVESTING AREAS

OF

GALVESTON BAY

TEXAS DEPARTMENT OF STATE HEALTH SERVICES  
SEAFOOD AND AQUATIC LIFE GROUP

DATE: NOVEMBER 1, 2007

ORDER NUMBER: MR-1205

The status of shellfish growing waters in Texas estuaries is subject to change by the Texas Department of State Health Services at any time. These changes may be due to high rainfall and runoff, flooding, hurricanes and other extreme weather conditions, major spills, red tides, or the failure or inefficient operation of wastewater treatment facilities. Current status of shellfish harvesting areas may be obtained from your local Texas Parks and Wildlife Department office or by calling, **toll-free, 1-800-685-0361**.

**PROHIBITED AREAS:** All areas not specifically designated as Prohibited, Restricted, Conditionally Approved, or Approved are classified as Prohibited and are closed for the harvesting of molluscan shellfish.

That area located off Umbrella Point between the east end of trailer park and the gray tin barn out to 300 yards offshore.

That area of the Houston Ship Channel and Tabbs Bay upstream of a line from the easternmost overhead power cable tower at Evergreen Point, to Cedar Bayou Channel Marker 8, to Cedar Bayou Channel Marker 2, to Morgans Point.

That area between the single story white house with the orange tile roof and the two story blue house with the white roof out to 300 yards offshore.

That area between the two story white house with the red roof and sail club out to 300 yards offshore.

That area between the house with orange roof and boat ramp out to 300 yards offshore.

That area between the boat house with red light and the two story house with green roof out to 300 yards offshore.

That area out to 400 yards offshore of Spillway Park.

That area of Dickinson Bayou from the old railroad bridge upstream to a line across the bayou perpendicular to the shoreline from the yellow house with the brown roof.

That area 150 yards east and west of ditch and out to 300 yards offshore.

All residential subdivision channels and harbor areas up to a radius of 300 yards offshore from the shoreline where the channels become land bound.

All areas within a 50 yard radius of recreational cabins and houseboats located in the bay.

All marked areas around transient or temporarily occupied structures (such as manned drilling rigs) which are potential pollution sources, but which are not indicated on this map because of their transient nature. These areas are described by separate Marine Order. Details can be obtained from the Texas Department of Health or the Texas Parks and Wildlife Department.

**RESTRICTED AREAS:** (Closed to the harvesting of shellfish for direct marketing)

The area of East Bay east of a line from the entrance to Robinson Bayou south to tide gauge at Marsh Point.

All of the Intracoastal Waterway where it becomes land bound at Bolivar Peninsula.

All area South of a line beginning at the Port Bolivar Lighthouse, to Houston Ship Channel (HSC) Marker 25, to the end of the Texas City Dike. All areas excluding the prohibited areas described above and inshore of a line from the Dollar Point shoreline, to the tripod piling off Dollar Point, to GAL Shellfish Marker (SM) UU, to GAL SM U, to Dickinson Channel Marker 4, to GAL SM T, to GAL SM S, to Eagle Point Shellfish Marker 2, to Eagle Point Shellfish Marker, to GAL SM Z, to American Exploration Co. Southwest Redfish Reef Platform "Green Tank" (29E31'03.5"N, 94E47'02.1"W), to Tenneco Platform State Land Tract 259(29E33'16.7"N, 94E56'32.7"W), to HSC Marker 72, to Five Mile Cut Channel Marker 5, to GAL SM AA, to GAL SM BB, to GAL SM CC, to GAL SM DD, to GAL SM EE, to GAL SM FF, to GAL SM GG, to GAL SM HH, to abandoned wooden platform(29E39'43.5"N, 94E47'22.3"W), to Separator C-2(29E40'41.4"N, 94E45'24.0"W), to GAL SM KK, to Anahuac Channel Marker 1, to GAL SM LL to GAL SM MM, due east to the shore. All areas inside a line starting at the shoreline ¼ statute miles north of the Double Bayou Channel entrance, due west to GAL SM NN, to Double Bayou Channel Marker 14, to GAL SM OO, due east to the shore ¼ statute miles below the Double Bayou Channel entrance. All areas inside a line from the shore starting at the tripod on Franklin Point, to GAL SM YY, to GAL SM PP, to the abandoned "Picnic Table" platform(29E34'00.5"N, 94E47'15.6"W), to GAL SM WW, to SM XX, to northwest tip of Smith Point, along the shoreline eastward, returning to the tripod on Franklin Point.

**CONDITIONALLY APPROVED AREAS:** (Subject to status changes based upon meteorological or hydrological conditions) If unsure of current status, contact your local Texas Parks and Wildlife Department office, or call, toll-free, 1-800-685-0361.

**Area 1**

Area 1 is located inside of a line beginning at HSC Marker 33, following the HSC, to HSC Marker 68, to HSC Marker 72, to Tenneco Platform State Land Tract 259(29E33'16.7"N, 94E56'32.7"W), to American Exploration Co. Southwest Redfish Reef Platform "Green Tank"(29E31'03.5"N, 94E47'02.1"W), to GAL SM Z, to Eagle Point Shellfish Marker 2, to Eagle Point Shellfish Marker, to GAL SM S, to GAL SM T, to Dickinson Channel Marker 4, to GAL SM U, to GAL SM UU, to piling tripod off Dollar Point, to GAL SM VV, to GAL SM V, to GAL SM W, to GAL SM X, to GAL SM Y, and returning to HSC Marker 33.

**Area 2**

Area 2 is located inside of a line beginning at HSC Marker 72, to HSC Marker 68, to GAL SM TT, to the Little Yellow Separator(29E35'14.6"N, 94E52'17.8"W), to GAL SM JJ, to Sunoco Separator 1 "Old Yellow"(29E38'05.5"N, 94E50'49.1"W), to GAL SM II, to GAL SM HH, to GAL SM GG, to GAL SM FF, to GAL SM EE, to GAL SM DD, to GAL SM CC, to GAL SM BB, to GAL SM AA, to Channel Marker # 7 (29E36'40.6"N, 94E55'18.4"W), and returning to HSC Marker 72.

**Area 3**

Area 3 is located inside of a line from the abandoned "Picnic Table" platform(29E34'00.5"N, 94E47'15.6"W), to GAL SM QQ, to GAL SM RR, to GAL SM SS, to the Little Yellow Separator(29E35'14.6"N, 94E52'17.8"W), to GAL SM JJ, to the Sunoco Separator 1 "Old Yellow"(29E38'05.5"N, 94E50'49.1"W), to GAL SM II, to GAL SM HH, to the Abandoned Wooden Platform(29E39'43.5"N, 94E47'22.3"W), to GAL SM 6, to GAL SM 5, to GAL SM 4 to GAL SM 3, to GAL SM 2, to GAL SM 1, to the piling tripod in the Trinity River Channel, southwest along the shoreline, to the piling tripod located on Franklin Point in the Trinity River Channel, to GAL SM YY, to GAL SM PP, and returning to the abandoned "Picnic Table" platform(29E34'00.5"N, 94E47'15.6"W).

**Area 4**

Area 4 is located inside of a line from the Abandoned Wooden Platform(29E39'43.5"N, 94E47'22.3"W), to Separator C-2(29E40'41.4"N, 94E45'24.0"W), to GAL SM KK, to Anahuac Channel Marker 1, to GAL SM LL, to GAL SM MM, due east to the shore, southward along the shoreline to ¼ statute miles north of the Double Bayou Channel entrance, due west to GAL SM NN, to Double Bayou Channel Marker 14, to GAL SM OO, due east to the shore ¼ statute miles below the Double Bayou Channel entrance, southwest along the shoreline, to the tripod piling in the Trinity River Channel, to GAL SM 1, to GAL SM 2, to GAL SM 3, to GAL SM 4, to GAL SM 5, to GAL SM 6, and returning to the Abandoned Wooden Platform(29E39'43.5"N, 94E47'22.3"W).

**APPROVED AREAS:** The approved growing waters are divided into three areas. For current status, contact your local Texas Parks and Wildlife Department office, or call, toll-free, 1-800-685-0361.

**Smith Point Approved Area**

The Smith Point Approved Area is all area inside of a line beginning at the northwest tip of Smith Point, to Trinity River Channel Marker # 7, to SM XX, to the Smith Point Shellfish Marker, to the end of the Little Baytown Pier, to the shore, then following the shoreline to the northwest tip of Smith Point.

**North Approved Area**

The North Approved Area is all area inside of a line beginning at the abandoned "Picnic Table" platform(29E34'00.5"N, 94E47'15.6"W), to GAL SM WW, to GAL SM M, to GAL SM N, to GAL SM O, to GAL SM P, to GAL SM Q, to GAL SM R, to HSC Marker 60, to HSC Marker 68, to GAL SM TT, to the Little Yellow Separator(29E35'14.6"N, 94E52'17.8"W), to GAL SM SS, to GAL SM RR, GAL SM QQ, and returning to the abandoned "Picnic Table" platform(29E34'00.5"N, 94E47'15.6"W).

**Central Approved Area**

The Central Approved Area is all area inside of a line beginning at GAL SM WW, to GAL SM XX, to Smith Point Shellfish Marker, to the end of Little Baytown Pier(29E31'38.0"N, 94E46'37.8"W), to the shore, eastward along the shoreline to the Tide Gage Piling, to GAL SM L, to GAL SM K, to GAL SM J, to GAL SM I, to GAL SM H, to GAL SM G, to GAL SM F, to GAL SM E, to GAL SM D, to GAL SM C, to GAL SM B, to GAL SM A, to Intracoastal Waterway (ICWW) Marker 4 at Sievers Cove, along the shoreline to the Port Bolivar Lighthouse, to HSC Marker 25, to the end of the Texas City Dike, along the north shoreline of the Texas City Dike, to the Texas City levee and along the levee shoreline, to the tripod piling off Dollar Point, to GAL SM VV, GAL SM V, to GAL SM W, to GAL SM X, to GAL SM Y, to HSC Marker 33, to HSC Marker 60, to GAL SM R, to GAL SM Q, to GAL SM P, to GAL SM O, to GAL SM N, to GAL SM M, and returning to GAL SM WW.

**East Approved Area**

The East Approved Area is all area inside of a line beginning at Intracoastal Waterway Channel Marker 4 at Sievers Cove, to GAL SM A, to GAL SM B, to GAL SM C, to GAL SM D, to GAL SM E, to GAL SM F, to GAL SM G, to GAL SM H, to GAL SM I, to GAL SM J, to GAL SM K, to GAL SM L, to the Tide Gauge Piling, along the shoreline to the mouth of Robinson Bayou, south to the tide gauge at Marsh Point, then following the shoreline to Intracoastal Waterway Channel Marker 4 at Sievers Cove.