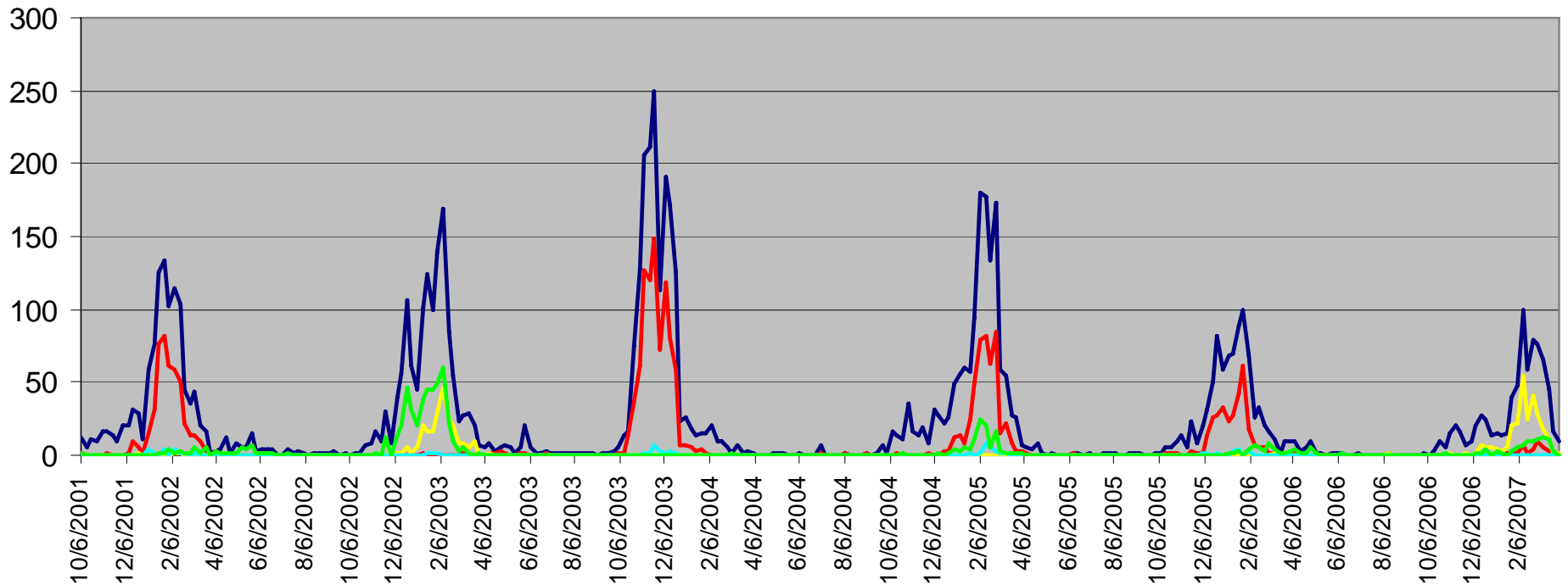




Influenza Outreach

Influenza Surveillance Specimens: Texas Department of State Health Services Lab

— Total specimens received — A H3N2 Pos. — A H1N1 Pos — A Unk Pos — B Pos





Association of Public Health Laboratories: Clinical Laboratory Outreach

- Improve understanding of state laboratory influenza surveillance
- Improve understanding of pandemic planning
- Improve coordination and collaboration between public health and clinical laboratories as related to influenza surveillance



Outreach objectives

- Review of proposed testing strategies, testing algorithms
- Review of the seasonal and pandemic utility of rapid influenza tests and the proper biosafety practice for seasonal and pandemic influenza testing
- Review of packaging and shipping requirements
- Promote seasonal influenza vaccine for laboratorians



Timeline

- Mid September 2006: request for proposals
- Proposal due October 5, 2006
- October 12th: grant awarded: \$18,000
- Grant period over: May 30, 2007



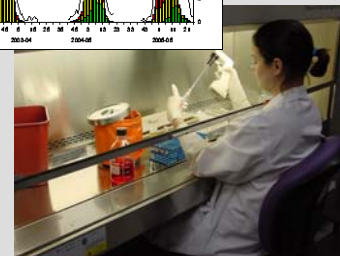
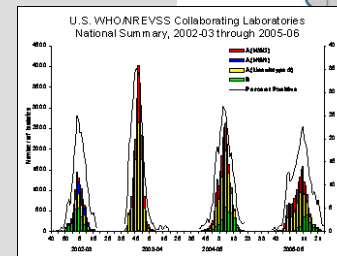
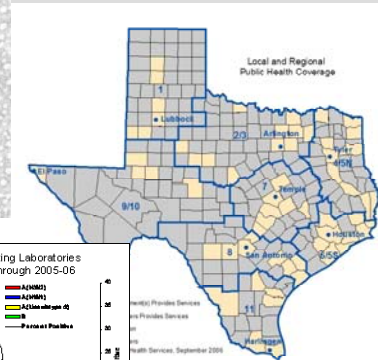
DSHS activities

- Prepare training materials
- Provide intensive training to regional and/or local staff on program objectives
- Provide outreach through workshops, distance learning, and one-on-one visits to clinical laboratories
- Attend Texas Association of Clinical Laboratory Scientists annual meeting

Resource Manual: Table of Contents

- Influenza Background/Laboratory Diagnosis
- Rapid Influenza Tests
- Influenza Surveillance
- LRN/State Public Health Lab
- Pandemic Influenza
- Pandemic Influenza Testing
- Appendix A: Contact Information
- Appendix B: Packaging and Shipping Instructions
- Appendix C: Specimen Submission Instructions for the DSHS Laboratory

Resource Manual for Seasonal and Pandemic Influenza Testing in Texas

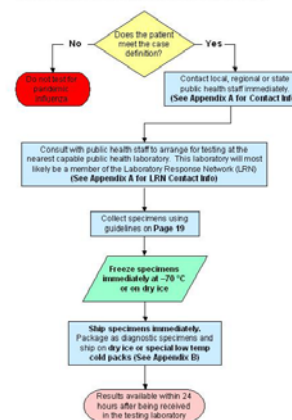


- Rapid Influenza Tests:
- Consider prevalence of influenza in community
- Consider test's performance (sensitivity and specificity)
- Follow manufacturer's instructions



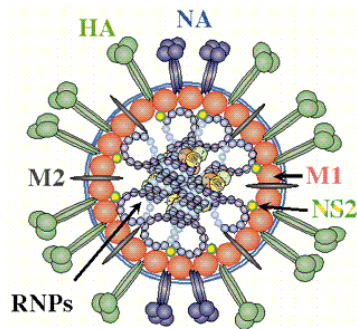
- Pandemic Influenza Testing:
- Algorithm for Determining Risk of Highly Pathogenic Avian Influenza in Patients Presenting with Febrile Respiratory Illness
- How to Arrange for Testing
- Specimen Collection Guidelines

How to Arrange for Pandemic Influenza Testing?



- Contact Information:
- DSHS Central Office
- HSR Influenza Surveillance Contacts
- Laboratory Response Network
- County Specific Contacts





Influenza workshop

DSHS Laboratory

February 1-2, 2007


- Attendees:
- DSHS Region 11
- DSHS Region 7
- City of Austin
- Cameron County
- Cherokee County





Speakers

- Wendy Sessions: Laboratory Testing for Influenza
- Stacy Davlin: Influenza Surveillance
- Grace Kubin: Texas Laboratory Response Network: Pandemic Influenza Testing Capabilities
- Richard Taylor: Influenza Pandemic Planning
- Eric Fonken: Avian Influenza
- Neil Pascoe: Outbreak Investigation: Suspect Pandemic Influenza
- Mirsa Douglass: APHL Influenza Outreach Grant Goals/Deliverables—Open Discussion



Promoting Influenza Surveillance: What DSHS can provide:

- List of Laboratories (with contact information)
- Resource Manuals
- Continuing education credits (P.A.C.E and ASCP)
- Influenza transport media
- Specimen collection swabs
- Packing materials
- Shipping cost
- Weekly surveillance reports



Benefit to clinical laboratories participating in influenza surveillance

- Ability to confirm a rapid influenza test result (QC)
- Identify the influenza type/subtype/strain circulating in their community
- Enhance state influenza surveillance
- Current: cell culture testing with a 2-10 day TAT
- Future: PCR testing with a 1-2 day TAT, culture on representative number of specimens

Texas Association of Clinical Laboratory Scientists Annual Meeting

March 22-23, 2007

Dallas, TX



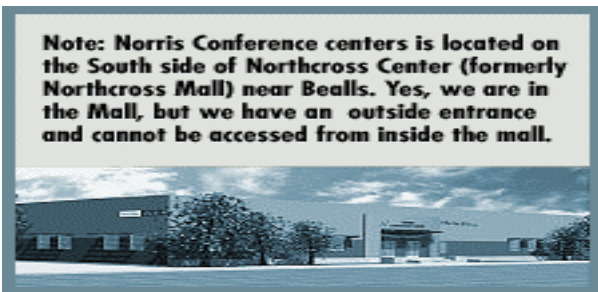
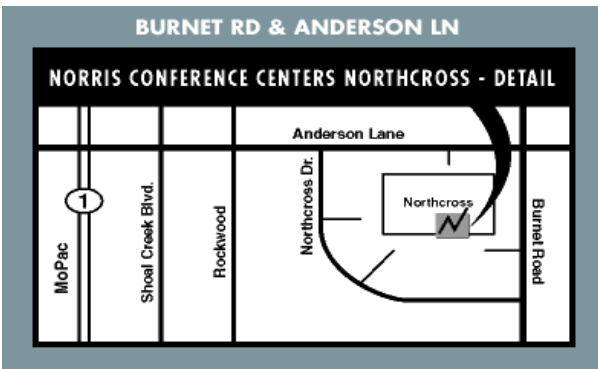
Pandemic Influenza: Is your laboratory ready?

Date: May 8th, 2007

Time: 2-4 p.m.

Cost: FREE!

Location: Norris Conference Center
2525 West Anderson Lane
Suite 365
Austin, TX 78757
Phone: 512-451-5011



Clinical laboratories will be on the front-line of testing during an influenza pandemic. Be prepared, come learn about the:

Public Health Resources for Seasonal and Pandemic Influenza



Objectives:


Upon completion of this training, participants will be able to:

- Review expectations of clinical and public health laboratories during an influenza pandemic
- Discuss resources for pandemic influenza testing and proper specimen collection and transport guidelines

To register contact Michelle Castillo at 512-458-7591 by May 1, 2007

ASCLS and ASCP Continuing Education Credits offered at NO CHARGE!



- 
- Provide outreach through workshops, distance learning, and one-on-one visits to clinical laboratories