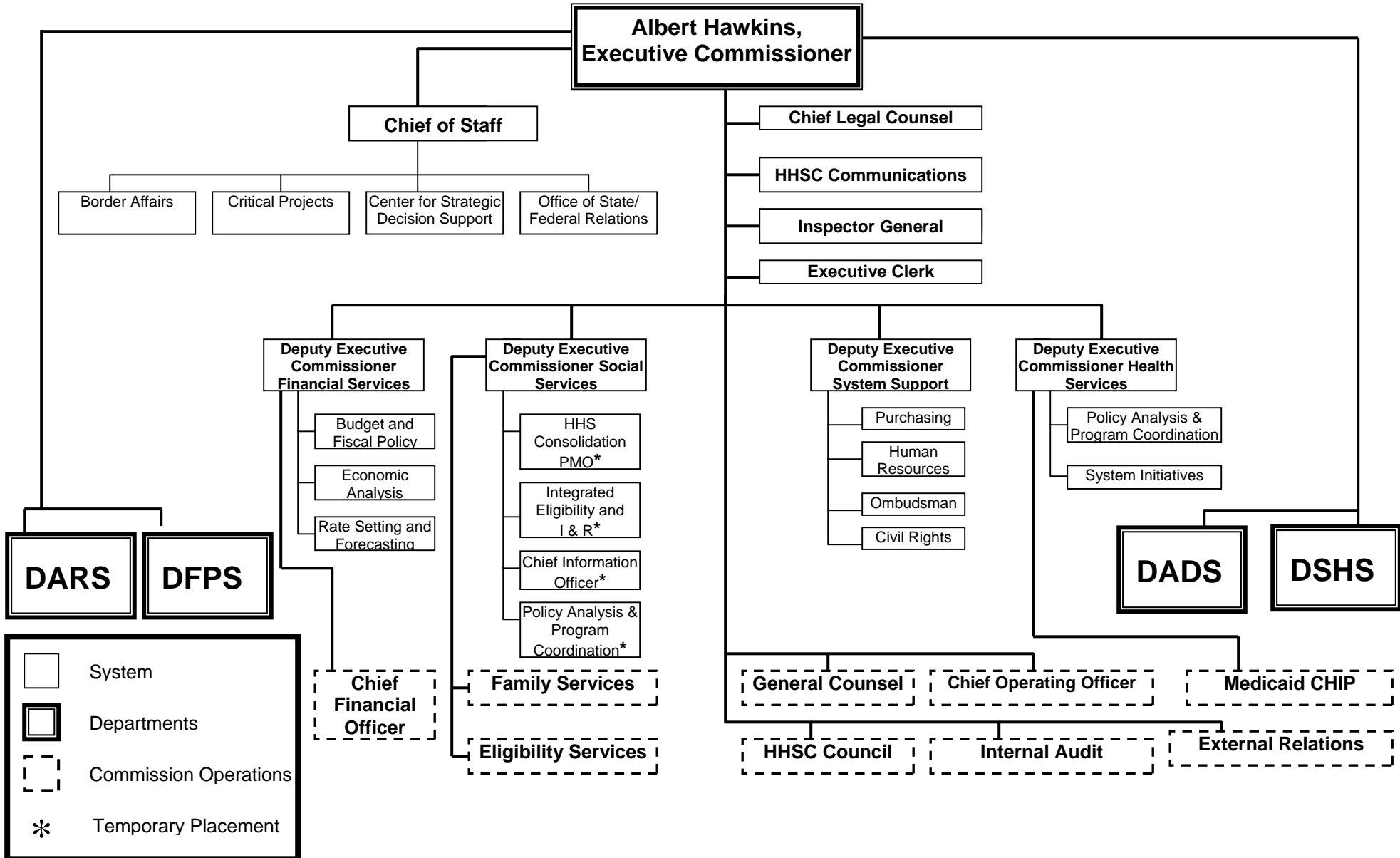


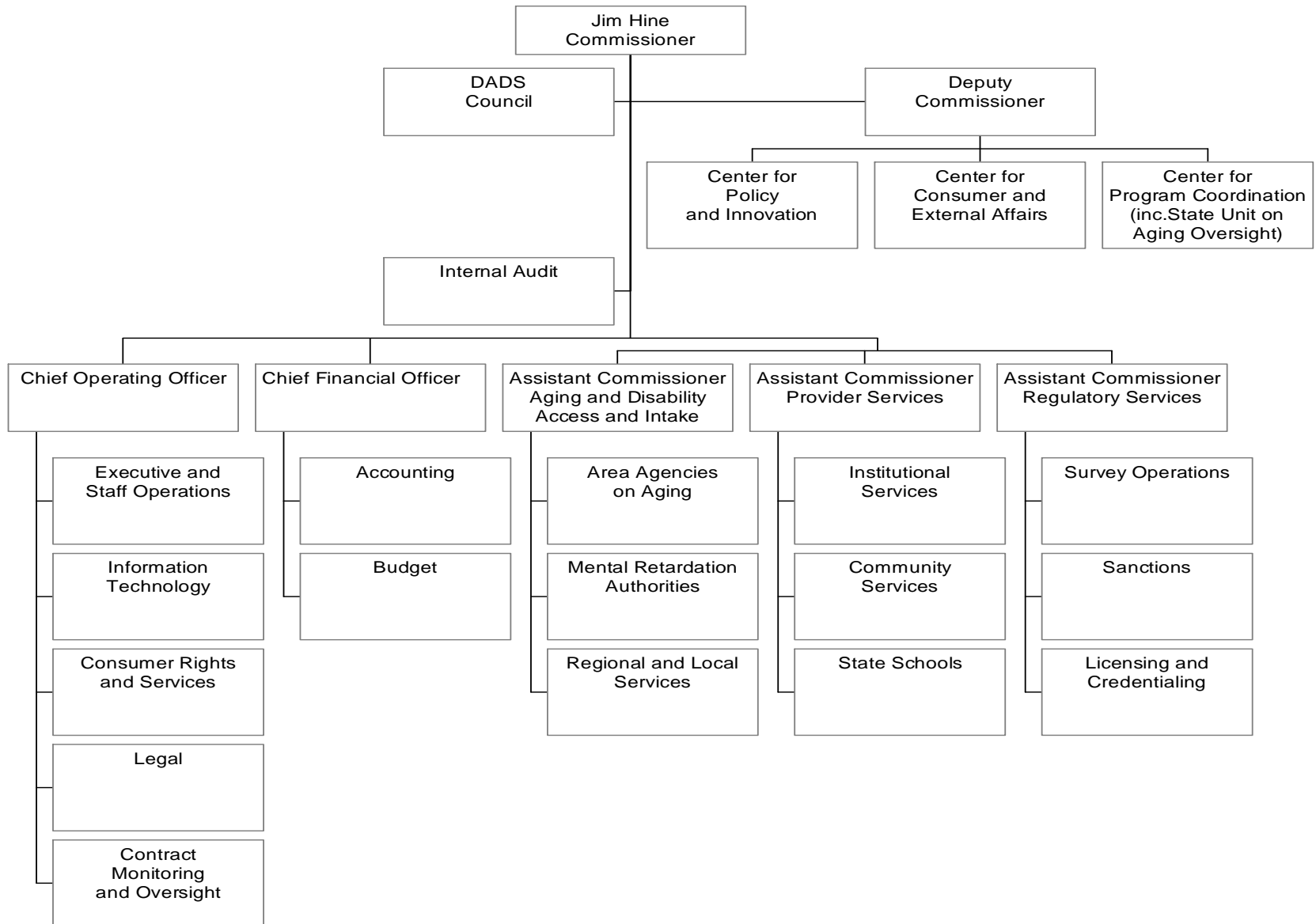
# Appendix B - Current Organizational Charts

## Texas Health and Human Services Commission Organizational Chart



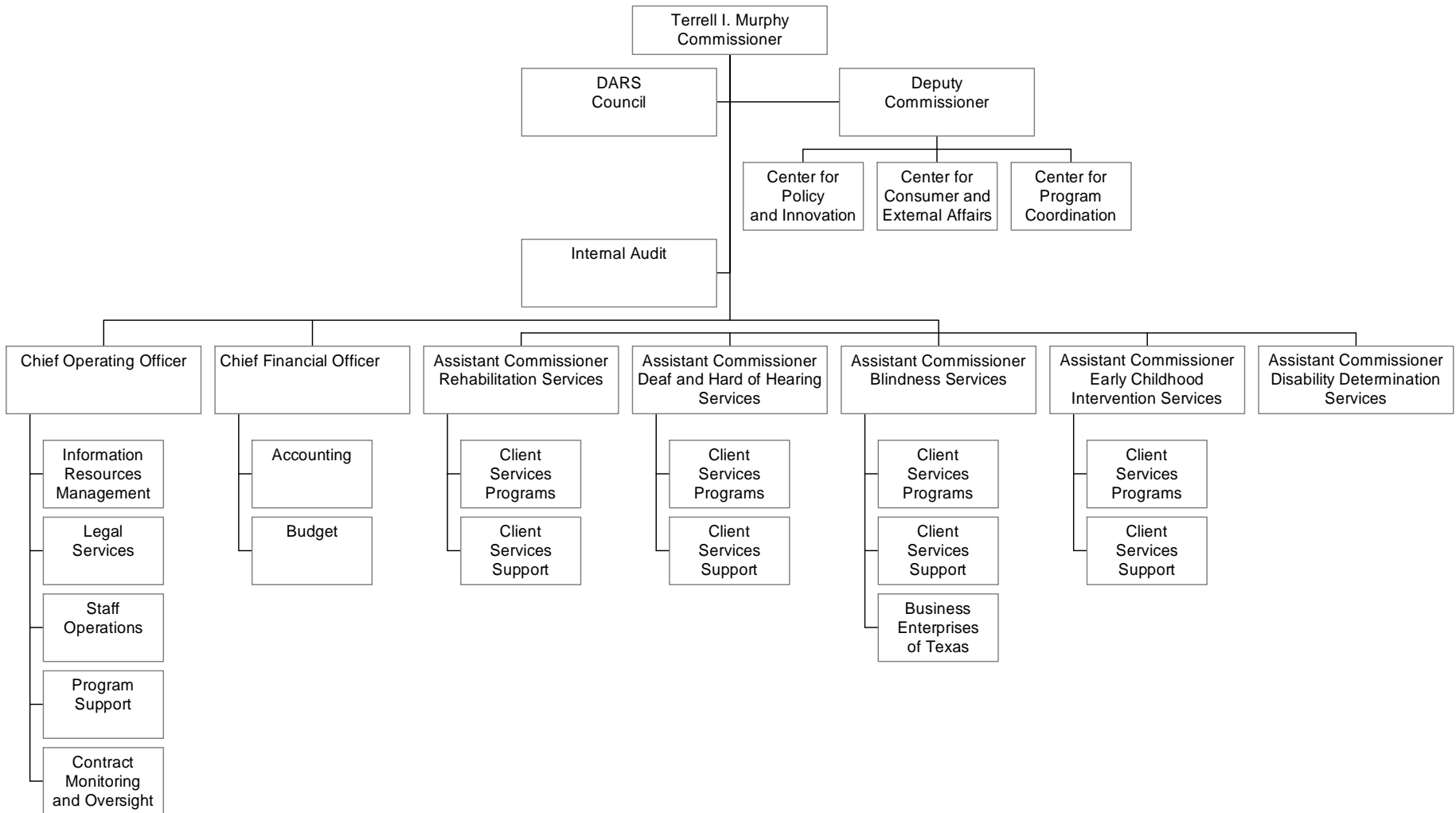


# DEPARTMENT OF AGING AND DISABILITY SERVICES ORGANIZATIONAL CHART

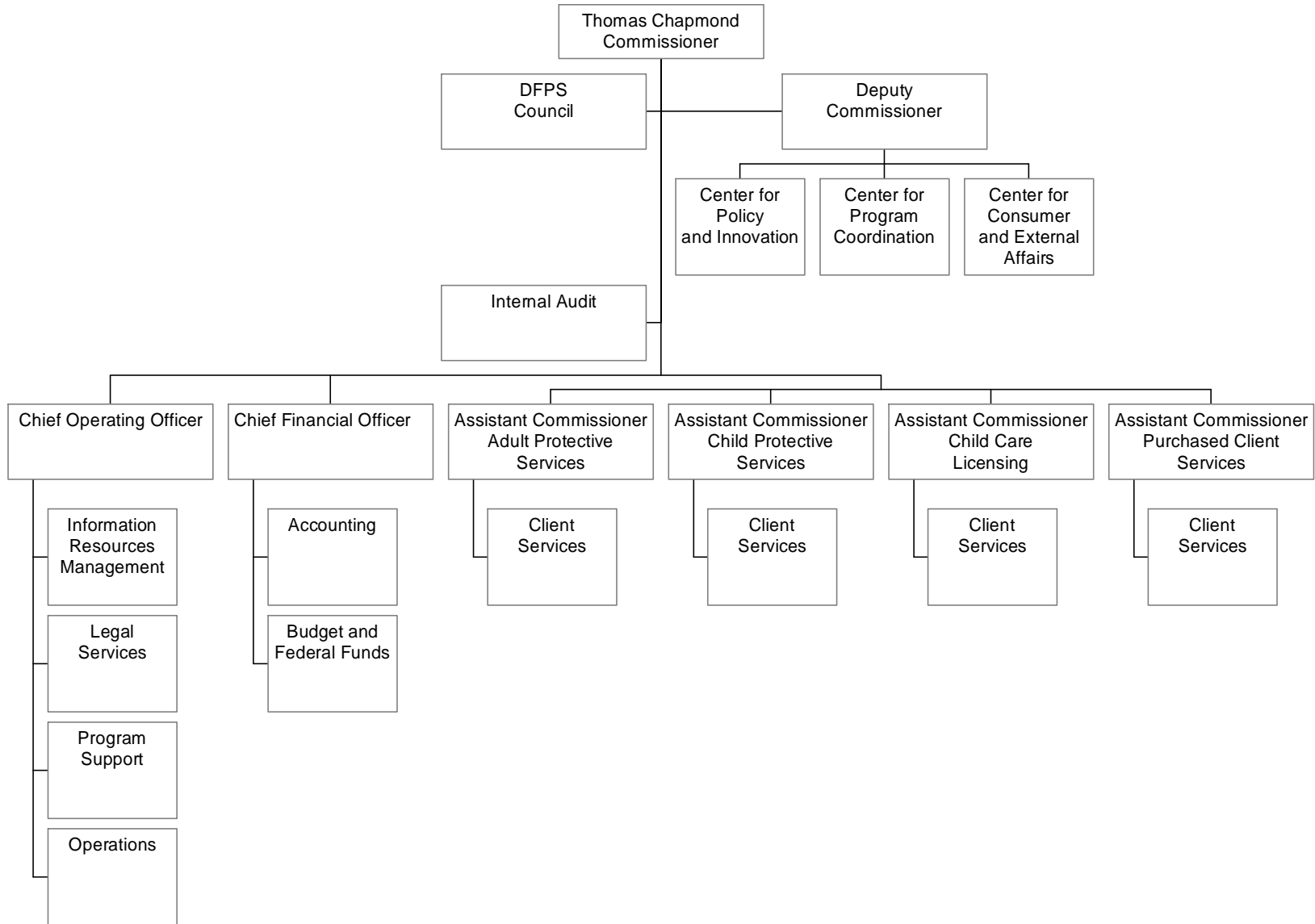




## DEPARTMENT OF ASSISTIVE AND REHABILITATIVE SERVICES ORGANIZATIONAL CHART



# DEPARTMENT OF FAMILY AND PROTECTIVE SERVICES ORGANIZATIONAL CHART



# DEPARTMENT OF STATE HEALTH SERVICES ORGANIZATIONAL CHART

