

**2002**

**Annual Report**  
Document 1 of 2



**Texas Department of Insurance**



**Texas Department of Insurance**

Office of the Commissioner, Mail Code 113-1C  
333 Guadalupe • P.O. Box 149221, Austin, Texas 78714-9221  
512 463-6464 telephone • 512 475-2005 fax • www.tdi.state.tx.us

**José Montemayor**  
Commissioner of Insurance

November 18, 2002

The Honorable Rick Perry, Governor  
The Honorable Bill Ratliff, Lieutenant Governor  
The Honorable James E. "Pete" Laney, Speaker of the House

Dear Governors and Speaker:

I am pleased to submit the *127th Annual Report* of the Texas Department of Insurance for the Fiscal Year ended August 31, 2002, in compliance with the *Texas Insurance Code*, Chapter 32, Section 32.021.

I am filing copies of this report simultaneously with the State Auditor, Legislative Budget Board, Comptroller of Public Accounts, Legislative Reference Library and State Library. As required, a copy of this report will be provided to insurance commissioners in other states. I also am notifying members of the Legislature of the report's availability in print and on the agency's Web site.

The agency's *Annual Financial Report*, formerly published as Part V of the agency's *Annual Report*, is published under separate cover for fiscal year 2002.

If you have questions about the contents of this report or affairs of the Texas Department of Insurance, I will be happy to respond.

  
Jose Montemayor, Commissioner of Insurance



**127<sup>th</sup>**

**Annual Report**  
to the Governor & Legislature



**For Fiscal Year 2002  
ending August 31, 2002**

**José Montemayor, Commissioner of Insurance**

# Table of Contents

<b>Part I Report on Program Activities</b>	
<b>Agency Vision</b> . . . . .	iv
<b>Agency Mission</b> . . . . .	iv
<b>Agency Goals</b> . . . . .	iv
<b>Agency Regulatory Philosophy</b> . . . . .	iv
<b>Functional Agency Organization Chart</b> . . . . .	vi
<b>Preface</b> . . . . .	1
<b>Mold and New Residential Property Policies</b> . . . . .	1
<b>Homeowners Insurance Market</b> . . . . .	1
<b>Figure 1</b> Comparison of Homeowners Market in Texas between Rate-Regulated and Non Rate-Regulated Insurers . . . . .	2
<b>Auto Insurance Market</b> . . . . .	2
<b>Figure 2</b> Comparison of Private Passenger Automobile Insurance Market in Texas between Rate-Regulated and Non Rate-Regulated Insurers . . . . .	2
<b>Workers' Compensation</b> . . . . .	3
<b>Figure 3</b> Selected Financial Information for Texas Mutual Insurance Company . . . . .	3
<b>Medical Professional Liability Insurance</b> . . . . .	3
<b>Prompt Payment Law</b> . . . . .	4
<b>Health Care</b> . . . . .	4
<b>Figure 4</b> Number and Percentage of Texans Without Health Insurance: 1994–2000 . . . . .	5
<b>HMOs</b> . . . . .	5
<b>Figure 5</b> Texas HMO Enrollment: 1990–2001 . . . . .	6
<b>Insurance Fraud</b> . . . . .	6
<b>Race-Based Pricing</b> . . . . .	6
<b>Solvency</b> . . . . .	6
<b>Figure 6</b> Texas Domestic Insurance Company Receiverships: FY1983–2002 . . . . .	7
<b>Consumer Help</b> . . . . .	7
<b>Accomplishments &amp; Actions</b> . . . . .	8
<b>Commissioner's Office</b> . . . . .	10
<b>Highlights</b> . . . . .	11
<b>Figure 7</b> Summary of Activity: Commissioner's Office . . . . .	13
<b>Figure 8</b> Commissioner's Contested Cases by Type . . . . .	13
<b>Figure 9</b> Summary of Activity: Internal Audit . . . . .	13
<b>Figure 10</b> Summary of Activity: Public Information Office . . . . .	13
<b>Legal and Compliance</b> . . . . .	14
<b>Highlights</b> . . . . .	15
<b>Figure 11</b> Summary of Activity: Legal and Compliance . . . . .	17
<b>Insurance Fraud Unit</b> . . . . .	17
<b>Fraud Unit History</b> . . . . .	18
<b>Highlights</b> . . . . .	18
<b>Figure 12</b> Summary of Activity: Insurance Fraud Unit . . . . .	18
<b>Financial</b> . . . . .	19
<b>Highlights</b> . . . . .	21
<b>Figure 13</b> Insurance Companies Under Regulatory Intervention . . . . .	22
<b>Figure 14</b> Disposition of Companies Under Rehabilitation . . . . .	23
<b>Figure 15</b> Texas Guaranty Association Assessments: 1975–2002 . . . . .	23
<b>Figure 16</b> Summary of Activity: Holding Company . . . . .	23
<b>Figure 17</b> Summary of Closed Applications: Holding Company . . . . .	24
<b>Figure 18</b> Amount Paid for Control of Domestic Insurance Companies: FY1995–FY2002 . . . . .	24
<b>Figure 19</b> Texas Policyholder Premiums, Claim Payments: CY1994–CY2001 . . . . .	25
<b>Figure 20</b> Total Capital/Surplus of Insurance Companies Operating in Texas, CY1994–CY2001 . . . . .	25
<b>Figure 21</b> Number of Examinations: FY1995–FY2002 . . . . .	25
<b>Figure 22</b> Number of Actuarial Opinions Reviewed: FY1995–FY2002 . . . . .	25
<b>Figure 23</b> Number of Actuarial Examinations Performed: FY1995–FY2002 . . . . .	26
<b>Figure 24</b> Number of Reinsurance Agreements Reviewed: FY1995–FY2002 . . . . .	26
<b>Figure 25</b> Number of Company Licenses under Commissioner's Jurisdiction . . . . .	26
<b>Property and Casualty</b> . . . . .	26
<b>Highlights</b> . . . . .	29
<b>Figure 26</b> Summary of Activity: Homeowners . . . . .	31
<b>Figure 27</b> Summary of Activity: Commercial Property/Casualty . . . . .	31
<b>Figure 28</b> Summary of Activity: Personal & Commercial Automobile . . . . .	32
<b>Figure 29</b> Summary of Activity: Title Insurance . . . . .	32
<b>Figure 30</b> Numbers of Agents/Licenses Under Commissioner's Jurisdiction: Title Insurance . . . . .	32
<b>Figure 31</b> Summary of Activity: Commercial Property Oversight Inspections (formerly Inspection and Fire Safety) . . . . .	33

# Table of Contents

## Property and Casualty

<b>Figure 32</b> Summary of Activity: Windstorm Operations	33
<b>Figure 33</b> Summary of Activity: Engineering Services	33
<b>Figure 34</b> Summary of Activity: Loss Control	33
<b>Figure 35</b> Summary of Activity: Amusement Ride Safety and Insurance Act	33
<b>Figure 36</b> Summary of Activity: Workers' Compensation Oversight Group	33
<b>Figure 37</b> Summary of Activity: Workers' Compensation Classification	33
<b>Figure 38</b> Summary of Activity: Workers' Compensation Management/Retrospective Rating/Group Purchase/Deductibles	34
<b>Figure 39</b> Other Statistical Reports Collected	34
<b>Figure 40</b> Rate and Rating Plan Filings	34

## Life, Health and Licensing Program

<b>Highlights</b>	38
<b>Figure 41</b> Summary of Activity: Intake Division Filings Received/Processed	41
<b>Figure 42</b> Number of Licenses, Certificates and Registrations under Commissioner's Jurisdiction	42
<b>Figure 43</b> Summary of Activity: Licensing Division	43
<b>Figure 44</b> Five-Year Summary of Agents License Statistics	43
<b>Figure 45</b> Numbers and Types of Agents Licenses: FY 2000–FY 2002	43
<b>Figure 46</b> Summary of Activity: Miscellaneous Lines	43
<b>Figure 47</b> Number of Premium Finance Companies and Loans' Value, CY1996–CY2001	43
<b>Figure 48</b> Summary of Activity: Life/Health Filings	44
<b>Figure 49</b> Summary of Activity: Health Maintenance Organization Filings	44
<b>Figure 50</b> Summary of Activity: Utilization Review Filings	44
<b>Figure 51</b> Summary of Activity: HMO Complaints	44
<b>Figure 52</b> Summary of Activity: HMO Projects/Inquiries	44

## Consumer Protection

<b>Highlights</b>	45
<b>Figure 53</b> Total Number of Complaint Cases Closed: FY1997–FY2002	46
<b>Figure 54</b> Additional Claim Payments to Consumers: FY1997–FY2002	46
<b>Figure 55</b> Restitutions/Refunds to Consumers: FY1997–FY2002	46

<b>State Fire Marshal's Office</b>	46
<b>History</b>	47
<b>Highlights</b>	48
<b>Figure 56</b> Summary of Activity: Fire Marshal's Office	48

<b>Administrative Operations</b>	48
<b>Highlights</b>	51
<b>Figure 57</b> Comparison of Maintenance Tax Rates: FY1993–FY2002	56

## Part II Report on Certificates of Authority

10-Year History–Certificate of Authority	57
Reconciliation	57
Types and Totals of Entities Licensed in Texas as of August 31, 2002	57
Summary of Activity–Early Warning	57
Types and Totals of Entities Holding a Certificate of Authority in Texas as of August 31, 2002	58
New Companies Organized or Admitted to Texas Between September 1, 2001 and August 31, 2002	58–61
Canceled Certificate of Authority Report	62

## Part III Liquidator's & Conservator's Report

Summary of Supervisions	73
Summary of Conservatorships	73
Summary of Insurers under Special Administrative Action	74
Insurance Companies in Supervision, Conservatorship or under Special Administrative Action by Fiscal Year	74
Companies in Supervision at Beginning of Fiscal Year 2002	74
Companies in Conservatorship at Beginning of Fiscal Year 2002	75
Art. 1.32/Insurers under Special Administrative Action at Beginning of Fiscal Year 2002	75
Companies Placed in Supervision Between September 1, 2001 and August 31, 2002	75
Companies Placed in Conservatorship between September 1, 2001 and August 31, 2002	76

# Table of Contents

## Part III Liquidator's & Conservator's Report

Insurers under Special Administrative Action between September 1, 2001 and August 31, 2002 . . . . .	76
Companies Released from Supervision between September 1, 2001 and August 31, 2002 . . . . .	76
Companies Released from Conservatorship between September 1, 2001 and August 31, 2002 . . . . .	76
Insurers Released from Special Administrative Action between September 1, 2001 and August 31, 2002 . . . . .	76
Insurance Companies and Affiliates in Receivership as of August 31, 2002 . . . . .	77
Receiverships by Fiscal Year: New Receiverships/Receiverships Closed . . . . .	77
Consolidated Receiverships . . . . .	78–80

### Texas Property and Casualty Insurance Guaranty

<b>Association Audited Financial Statements . . . . .</b>	<b>80</b>
Statement of Financial Position . . . . .	80
Statement of Activities and Changes in Net Assets . . . . .	81
Statement of Cash Flows . . . . .	82
Notes to Financial Statements . . . . .	83

### Life, Accident, Health and Hospital Service

#### Insurance Guaranty Association Audited

<b>Financial Statements . . . . .</b>	<b>88</b>
Statement of Financial Position . . . . .	88
Statement of Activities and Changes in Net Assets . . . . .	89
Statement of Cash Flows . . . . .	89
Notes to Financial Statements . . . . .	90

#### Texas Title Insurance Guaranty Association

<b>Audited Financial Statements . . . . .</b>	<b>94</b>
Statement of Financial Position . . . . .	94
Statement of Activities and Changes in Net Assets . . . . .	95
Statement of Cash Flows . . . . .	95
Notes to Financial Statements . . . . .	95

## Part IV Summary of Information from Annual Statements

Top 40 Insurers/Homeowners . . . . .	99
Top 40 Insurers/Private Passenger Auto . . . . .	100
Top 40 Insurers/Workers' Compensation . . . . .	101
Top 40 Insurers/Accident and Health . . . . .	102
Top 40 Health Maintenance Organizations/Accident and Health . . . . .	103
Top 40 Insurers/Life . . . . .	104
Top 40 Insurers/Annuities . . . . .	105

## Part IV Summary of Information from Annual Statements

Texas Premium Summary . . . . .	106
Property and Casualty 2000–2001 . . . . .	106
Life, Accident & Health and Annuity 2000–2001 . . . . .	106
Legal Reserve Life Insurance Companies for Calendar Year 2001, All Companies Combined . . . . .	107
Legal Reserve Life Insurance Companies for Calendar Year 2001, Texas Business Only . . . . .	107
Stipulated Premium Companies for Calendar Year 2001, All Companies Combined . . . . .	107
Fraternal Benefit Societies for Calendar Year 2001, All Companies Combined . . . . .	108
Statewide Mutual Assessment Companies, Local Mutual Aid Associations and Burial Associations for Calendar Year 2001, All Companies Combined . . . . .	108
Exempt Associations for Calendar Year 2001, All Associations Combined . . . . .	109
Non-Profit Group Hospital Service for Calendar Year 2001, All Associations Combined . . . . .	109
Health Maintenance Organizations for Calendar Year 2001 . . . . .	109
Non-Profit Legal Services Corporations for Calendar Year 2001 . . . . .	109
Stock Fire, Stock Casualty, and Stock Fire and Casualty Insurance Companies For Calendar Year 2001, All Companies Combined . . . . .	110
Mutual Fire and Casualty Companies For Calendar Year 2001, All Companies Combined . . . . .	111
Lloyds For Calendar Year 2001 . . . . .	112
Reciprocal Exchanges For Calendar Year 2001, All Companies Combined . . . . .	113
County Mutual Fire Insurance Companies for Calendar Year 2001, All Companies Combined . . . . .	114
Farm Mutual Insurance Companies for Calendar Year 2001 . . . . .	114
Domestic Risk Retention Groups for Calendar Year 2001 . . . . .	114
Title Companies for Calendar Year 2001 . . . . .	115

## Agency Vision

The Texas Department of Insurance envisions a financially stable and responsive insurance industry that provides insurance at a reasonable cost to all consumers who need it.

## Agency Mission

The Texas Department of Insurance regulates the Texas insurance industry firmly, fairly, effectively and efficiently.

- TDI supports a fair, efficient and productive industry dedicated to the long-term concept of insurance and its contributions to society.
- TDI works for the availability of quality insurance products for all Texans at reasonable prices and under reasonable terms and strives to protect consumers' insurance assets.
- TDI enforces solvency standards and promotes competition in the industry while protecting consumers from fraud, misrepresentation and unfair practices.
- TDI educates the public about insurance so that Texans can make informed choices, and TDI insists that the industry be responsive to its customers.
- TDI works to make Texas a place where industry will want to do business.
- TDI works to protect the lives and property of the citizens of Texas from fire and fire-related hazards.

## Agency Goals

- Ensure that Texans are effectively and efficiently served by high-quality professionals and businesses through clear standards, compliance and market-based solutions.
- Encourage fair competition in the insurance industry.
- Encourage the financial health of the insurance industry through monitoring and regulation.
- Decrease insurance industry loss costs.
- Reduce loss of life and property due to fire.

## Agency Regulatory Philosophy

We believe that our primary responsibility is to the people and businesses that are served by insurance and pay taxes in the State of Texas. We recognize that we are here to serve them and consider that to be an honor.

- In meeting their needs as consumers, we pledge that we will make every effort to ensure that prices are fair and reasonable, that claims will be handled fairly, promptly and professionally and that, in dealings with us, consumers will be treated with respect and courtesy. We will continuously strive to improve consumer information and education on prices, services, safety and quality of insurance to help them shop wisely.
- In meeting their needs as taxpayers, we promise to maximize efficiency of TDI operations, to eliminate unnecessary functions and paperwork burdens and to minimize bureaucracy.
- In earning their trust, we pledge to maintain the highest ethical standards in words and actions.
- We believe that we have an equally important responsibility to each other as employees and to all of the people who work with us.
- We respect the dignity and recognize the contribution of each employee.
- We encourage and will be responsive to all suggestions and concerns.
- We are pledged to equal opportunity in employment, retention and advancement. We pledge to encourage and assist employees in developing to their full potential.



## Agency Regulatory Philosophy

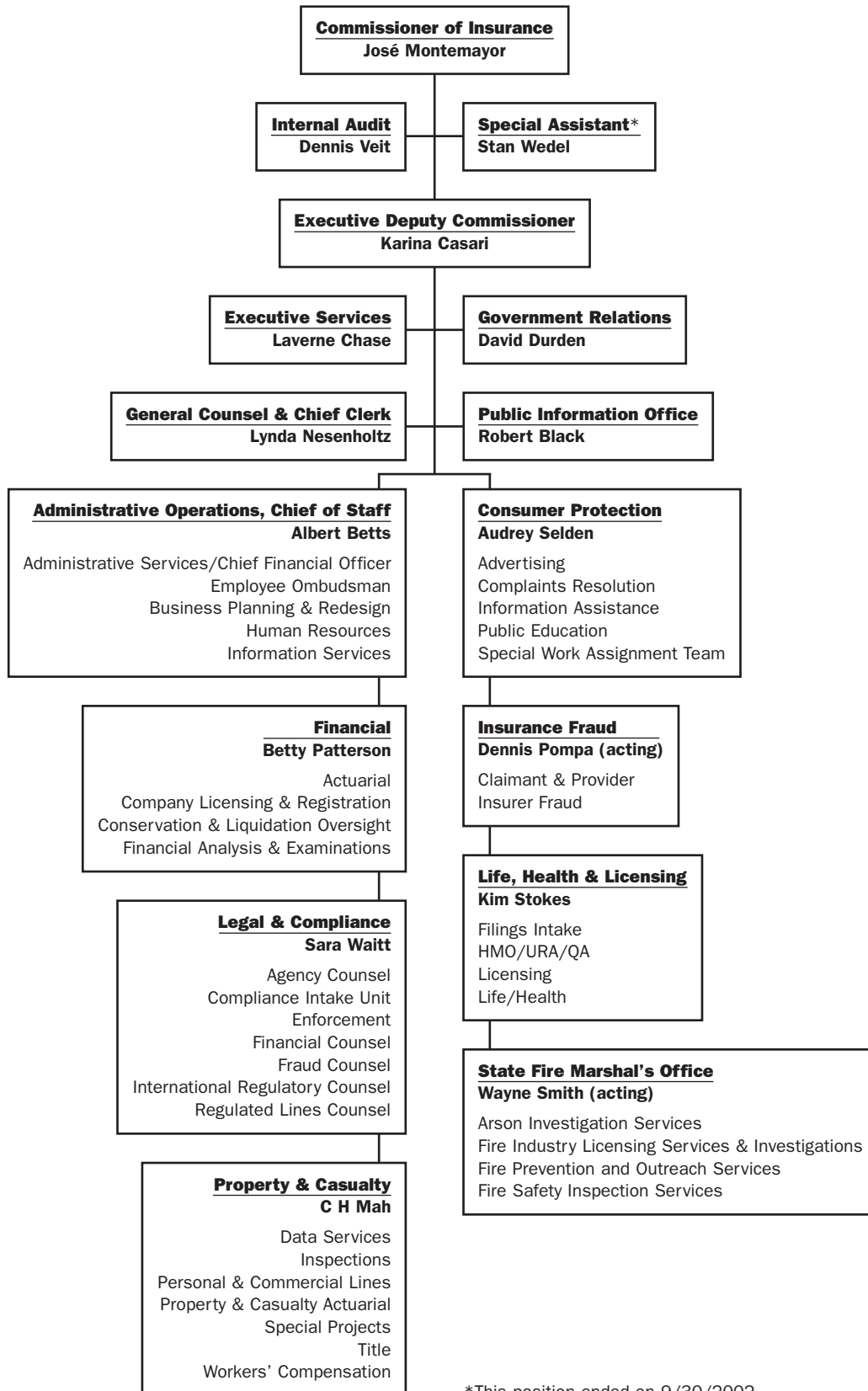
- We are committed to a diverse work force.
- We pledge to provide leadership that is fair, responsive and ethical.
- We believe that each employee is an integral part of our team effort to serve the people of the State of Texas. We pledge to share our knowledge and to assist each other in achieving the mission of the agency.
- We believe in decentralizing power and delegating authority to our employees. We pledge to do our best individually and recognize that each of us is responsible and accountable for our actions.
- We have a responsibility to the people working in the insurance industry.
- We pledge to make Texas a place where industry will want to do business.
- We pledge to support a fair, efficient and productive industry dedicated to the long-term concept of insurance, and its contributions to society.
- We pledge to communicate concerns, problems and issues to the industry. We encourage the industry to communicate its suggestions and concerns to TDI.
- We pledge to assist the industry in an efficient and responsive manner in meeting its obligations to the public and its policyholders.

### Explanatory Note

*References to statutes and insurance-related legislation: Unless otherwise noted, statutory references, including citations of articles, refer to the Texas Insurance Code. SB refers to a Senate bill and HB refers to a House bill. Bill references are to those enacted by the 77th Texas Legislature (2001) unless otherwise indicated.*

# Functional Agency Organization Chart

as of August 31, 2002



\*This position ended on 9/30/2002.