

# Table of Contents

Agency Vision	vi
Organizational Chart August 31, 2000	vii
Part I – Reports of Program Activity	1
Part II – Certificates of Authority	55
Part III – Liquidator's & Conservator's Report	75
Part IV – Summary of Annual Statements	119
Part V – Annual Financial Report	139
<b>Preface</b>	<b>1</b>
<b>Commissioner's Office</b>	<b>9</b>
Commissioner of Insurance	
Chief of Staff & Senior Associate for Administration	
General Counsel & Chief Clerk	
Chief Economist	
Executive Services	
Internal Audit	
Government Relations	
Public Information Office	
<b>Legal and Compliance</b>	<b>14</b>
Agency Counsel	
Regulated Lines Counsel	
Financial Counsel	
Enforcement	
Compliance Intake Unit	
Special Litigation Counsel	
International Regulatory Counsel/Special Counsel to the Commissioner	
<b>Insurance Fraud Unit</b>	<b>17</b>
Unit Management	
Insurer Fraud	
Claimant & Provider Fraud	
<b>Financial</b>	<b>19</b>
Company License & Registration	
Financial Analysis & Examinations	
Actuarial Division	
Conservation	
Liquidation Oversight	
<b>Property &amp; Casualty</b>	<b>28</b>
General Management	
Personal & Commercial Lines Division	
Inspections Division	
Title Division	
Workers' Compensation Division	
Property & Casualty Actuarial	
Data Services	
Special Projects	
<b>Life, Health &amp; Licensing</b>	<b>37</b>
General Management	
Filings Intake Division	
Licensing Division	
Life/Health Division	
Health Maintenance Organization Division	

<b>Consumer Protection</b>	<b>45</b>
Complaints Resolution	
Information Assistance	
Public Education	
Advertising	
Special Work Assignments Team	
<b>State Fire Marshal's Office</b>	<b>47</b>
Fire/Arson Investigation Services	
Fire Industry Licensing Services	
Fire Safety Inspection Services	
Fire Prevention & Outreach Services	
<b>Administrative Operations</b>	<b>49</b>
Information Services	
Administrative Services	
Human Resources	
Business Planning and Redesign Division	
Employee Ombudsman and Ethics Advisor	

## Table of Figures & Graphs Preface

<b>Figure 1</b>	
Texas HMO Enrollment — 1990-2000	2
<b>Figure 2</b>	
Comparison of Texas Private Passenger Automobile Insurance Market (Rate-Regulated/Non Rate-Regulated Insurers — 1993-1999)	4
<b>Figure 3</b>	
Automobile Insurance MAP Activity July 1, 1998 - August 31, 2000	4
<b>Figure 4</b>	
Tort Reform Premium Savings Reported by Line of Insurance (in millions)	5
<b>Figure 5</b>	
Texas Domestic Insurance Company Receiverships, FY1983-2000	6
<b>Part I</b>	
<b>Figure 6</b>	
Summary of Activity — Commissioner's Office	12
<b>Figure 7</b>	
Commissioner's Contested Cases by Type	12
<b>Figure 8</b>	
Summary of Activity — Internal Audit	12
<b>Figure 9</b>	
Summary of Activity — Public Information Office	13
<b>Figure 10</b>	
Summary of Activity — Legal and Compliance	16

# Table of Contents

<b>Figure 11</b>	Summary of Activity — Insurance Fraud Unit	18
<b>Figure 12</b>	Insurance Companies in Supervision/Conservatorship	22
<b>Figure 13</b>	Insurers under Court-Directed/Special Administrative Action	22
<b>Figure 14</b>	Disposition of Companies Under Rehabilitation	22
<b>Figure 15</b>	Texas Guaranty Association Assessments — 1975-2000	23
<b>Figure 16</b>	Summary of Activity — Holding Company	23
<b>Figure 17</b>	Summary of Closed Applications — Holding Company	24
<b>Figure 18</b>	Amount Paid for Control of Domestic Insurance Companies — FY1995-FY2000	24
<b>Figure 19</b>	Texas Policyholder Premiums, Claim Payments — CY1994-CY1999	25
<b>Figure 20</b>	Total Capital/Surplus of Insurance Companies Operating in Texas — CY1994-CY1999	25
<b>Figure 21</b>	Number of Examinations — FY1995-FY2000	25
<b>Figure 22</b>	Number of Actuarial Opinions Reviewed — FY1995-FY2000	26
<b>Figure 23</b>	Number of Actuarial Examinations Performed — FY1995-FY2000	26
<b>Figure 24</b>	Actuarial Projects Completed — FY1995-FY2000	26
<b>Figure 25</b>	Number of Reinsurance Arrangements Reviewed — FY1995-FY2000	26
<b>Figure 26</b>	Continuing Care Retirement Communities (CCRCs) Filings	27
<b>Figure 27</b>	Number of Company Licenses Under Commissioner's Jurisdiction	27
<b>Figure 28</b>	Summary of Activity — Personal Property	31

<b>Figure 29</b>	Summary of Activity — Commercial Property/Casualty Division	32
<b>Figure 30</b>	Summary of Activity — Personal & Commercial Automobile	33
<b>Figure 31</b>	Summary of Activity — Title Insurance	33
<b>Figure 32</b>	Numbers of Agents/Licenses under Commissioner's Jurisdiction — Title Insurance	33
<b>Figure 33</b>	Summary of Activity — Commercial Property Oversight Inspections	34
<b>Figure 34</b>	Summary of Activity — Windstorm Operations	34
<b>Figure 35</b>	Summary of Activity — Engineering Services	34
<b>Figure 36</b>	Summary of Activity — Loss Control	34
<b>Figure 37</b>	Summary of Activity — Amusement Ride Safety and Insurance Act	34
<b>Figure 38</b>	Summary of Activity — Workers' Compensation Oversight Group	35
<b>Figure 39</b>	Summary of Activity — Workers' Compensation Classification	35
<b>Figure 40</b>	Summary of Activity — Workers' Compensation Management/Retrospective Rating/Group Purchase/Deductibles	35
<b>Figure 41</b>	Tort Reform Premium and Savings Reported by Line of Insurance	36
<b>Figure 42</b>	Title Statistical Reports Collected	36
<b>Figure 43</b>	Rate and Rating Plan Filings in FY1999-FY2000	36
<b>Figure 44</b>	Summary of Activity — Intake Division Filings Received/Processed	41
<b>Figure 45</b>	Number of Licenses, Certificates and Registrations Under Commissioner's Jurisdiction	42
<b>Figure 46</b>	Summary of Activity — Licensing Division	42

# Table of Contents

<b>Figure 47</b>	
Five-Year Summary of Agents License Statistics	42
<b>Figure 48</b>	
Numbers and Types of Agents Licenses — FY1999-FY2000	43
<b>Figure 49</b>	
Summary of Activity — Miscellaneous Lines	43
<b>Figure 50</b>	
Number of Premium Finance Companies and Loans' Value — CY1995-CY1999	43
<b>Figure 51</b>	
Summary of Activity — Life/Health Policy Forms Reviewed	44
<b>Figure 52</b>	
Summary of Activity — Health Maintenance Organization Filings	44
<b>Figure 53</b>	
Summary of Activity — Utilization Review Filings	44
<b>Figure 54</b>	
Summary of Activity — HMO Complaints	44
<b>Figure 55</b>	
Total Number of Complaint Cases Closed — FY1996- FY2000	46
<b>Figure 56</b>	
Additional Claim Payments to Consumers — FY1996- FY2000	46
<b>Figure 57</b>	
Restitutions/Refunds to Consumers — FY1996-FY2000	46
<b>Figure 58</b>	
Summary of Activity — Fire Marshal's Office	48
<b>Figure 59</b>	
Comparison of Maintenance Tax Rates from FY1991-FY2000	53
<b>Part II Report on Certificates of Authority</b>	
<b>Tables</b>	
10-Year History — Certificate of Authority	55
Reconciliation	55

Types and Totals of Entities Licensed in Texas as of August 31, 2000	55
Types and Totals of Entities Holding a Certificate of Authority in Texas as of August 31, 2000	56
Summary of Activity — Early Warning	57
New Companies Organized or Admitted to Texas between September 1, 1999 and August 31, 2000	57
Cancelled Certificate of Authority Report: Companies Reinsured, Merged, Dissolved, Withdrawn, Redomesticated, Domesticated or Placed in Receivership Between September 1, 1999 and August 31, 2000	62
<b>Listings</b>	
New Companies Organized or Admitted to Texas between September 1, 1999 and August 31, 2000	58
Cancelled Certificate of Authority Report: Companies Reinsured, Merged, Dissolved, Withdrawn, Redomesticated, Domesticated or Placed in Receivership Between September 1, 1999 and August 31, 2000	63
Companies that Changed Name, Moved Home Office or Were Reclassified Between September 1, 1999 and August 31, 2000	67
<b>Part III Liquidator's and Conservator's Report</b>	
Summary of Supervisions: September 1, 1999-August 31, 2000	75
Summary of Conservatorships: September 1, 1999-August 31, 2000	75
Summary of Insurers Under Court-Directed/Special Administrative Action: September 1, 1999-August 31, 2000	76
Insurance Companies in Supervision, Conservatorship or Under Court-Directed/Special Administrative Action by Fiscal Year	76
Companies in Supervision at Beginning of Fiscal Year 2000	76
Companies in Conservatorship at Beginning of Fiscal Year 2000	77
Art.1.32/Insurers Under Court-Directed/Special Administrative Action at Beginning of Fiscal Year 2000	77
Companies Placed in Supervision Between September 1, 1999 and August 31, 2000	78

# Table of Contents

Companies Placed in Conservatorship Between September 1, 1999 and August 31, 2000	78
Insurers Under Court-Directed/Special Administrative Action Between September 1, 1999 and August 31, 2000	78
Companies Released From Supervision Between September 1, 1999 and August 31, 2000	79
Companies Released From Conservatorship Between September 1, 1999 and August 31, 2000	79
Insurers Released from Court-Directed/Special Administrative Action Between September 1, 1999 and August 31, 2000	79
Insurance Companies and Affiliates in Receivership as of August 31, 2000	80
Receiverships by Fiscal Year: New Receiverships/Receiverships Closed	80
Consolidated Receiverships Balance Sheet	81
Consolidated Receiverships Statement of Receipts and Expenditures	83
Texas Property & Casualty Insurance Guaranty Association: Audited Financial Statements December 31, 1999	87
Texas Life, Accident, Health & Hospital Service Insurance Guaranty Association: Audited Financial Statements December 31, 1999 and 1998	101
Texas Title Insurance Guaranty Association: Audited Financial Statements December 31, 1999 and 1998	112
<b>Part IV Summary of Information from Annual Statements</b>	
Top 40 Insurers/Homeowners	119
Top 40 Insurers/Private Passenger Auto	120
Top 40 Insurers/Workers' Compensation	121
Top 40 Insurers/Accident and Health	122
Top 40 Health Maintenance Organizations/Accident and Health	123
Top 40 Insurers/Life	124
Top 40 Insurers/Annuities	125
Texas Premium Summary — Grand Total 1998-1999	126
Property and Casualty 1998-1999	126
Life, Accident, Health and Annuity 1998-1999	127
Legal Reserve Life Insurance Companies for Calendar Year 1999 (All Companies Combined)	127

Legal Reserve Life Insurance Companies for Calendar Year 1999 (Texas Business Only)	128
Stipulated Premium Companies for Calendar Year 1999 (All Companies Combined)	128
Fraternal Benefit Societies for Calendar Year 1999 (All Societies Combined)	129
Statewide Mutual Assessment Companies, Local Mutual Aid Associations and Burial Associations for Calendar Year 1999 (All Companies Combined)	130
Exempt Associations for Calendar Year 1999 (All Associations Combined)	130
Non-Profit Group Hospital Service for Calendar Year 1999 (All Associations Combined)	131
Health Maintenance Organizations for Calendar Year 1999	131
Non-Profit Legal Service Corporations for Calendar Year 1999	131
Stock Fire, Stock Casualty and Stock Fire and Casualty Insurance Companies for Calendar Year 1999 (All Companies Combined)	132
Mutual Fire and Casualty Companies for Calendar Year 1999 (All Companies Combined)	133
Lloyds for Calendar Year 1999	134
Reciprocal Exchanges for Calendar Year 1999 (All Companies Combined)	135
County Mutual Fire Insurance Companies for Calendar Year 1999 (All Companies Combined)	136
Farm Mutual Insurance Companies for Calendar Year 1999	136
Risk Retention Groups for Calendar Year 1999	137
Title Companies for Calendar Year 1999	137

## Part V Financial Report

### General Purpose Financial Statements

Exhibit I — Combined Balance Sheet: All Fund Types and Account Groups and Discretely Presented Component Unit	140
---	-----

## Table of Contents

Exhibit II — Combined Statement of Revenues, Expenditures and Changes in Fund Balances — All Governmental Fund Types and Expendable Trust Funds 142

Exhibit IV — Combined Statement of Revenues, Expenses and Changes in Fund Equity — All Proprietary Fund Types and Discretely Presented Component Unit 144

Exhibit V — Combined Statement of Cash Flows — All Proprietary Fund Types and Discretely Presented Component Unit 145

Notes to the Financial Statements 146

### Combining Financial Statements

Exhibit A-1 — Combining Balance Sheet: Fiduciary Fund Types 157

Exhibit B-1 — Combining Statement of Changes in Assets and Liabilities — All Agency Funds 158

## Schedules

Schedule 1A — Schedule of Expenditures of Federal Awards 160

Schedule 2 — Summary of Revenues 162

Schedule 2A — Comparative Statement of Revenues 164

Schedule 3 — Appropriation Item Transfers 165

Schedule 4 — HUB Strategic Plan Progress Report 166

Schedule 5 — Indirect Costs 167

Schedule 6 — Professional/Consulting Fees and Legal Service Fees 169

Schedule 7 — Summary of Space Occupied 170

Addendum — General Comments 172

## Agency Vision

The Texas Department of Insurance envisions a financially stable and responsive insurance industry that provides insurance at a reasonable cost to all consumers who need it.

## Agency Mission

- The Texas Department of Insurance regulates the Texas insurance industry firmly, fairly, effectively and efficiently.
- TDI supports a fair, efficient and productive industry dedicated to the long-term concept of insurance and its contributions to society.
- TDI works for the availability of quality insurance products for all Texans at reasonable prices and under reasonable terms and strives to protect consumers' insurance assets.
- TDI enforces solvency standards and promotes competition in the industry while protecting consumers from fraud, misrepresentation and unfair practices.
- TDI educates the public about insurance so that Texans can make informed choices, and TDI insists that the industry be responsive to its customers.
- TDI works to make Texas a place where industry will want to do business.
- TDI works to protect the lives and property of the citizens of Texas from fire and fire-related hazards.

## Agency Goals

- Ensure that Texas consumers are effectively and efficiently served by high-quality professionals and businesses by setting clear standards, maintaining compliance and seeking market-based solutions.
- Encourage fair competition in the insurance industry.
- Encourage the financial health of the insurance industry through monitoring and regulation.
- Decrease insurance industry loss costs.
- Reduce loss of life and property due to fire.

## Agency Regulatory Philosophy

We believe that our primary responsibility is to the people and businesses that are served by insurance and pay taxes in the State of Texas. We recognize that we are here to serve them and consider that to be an honor.

- In meeting their needs as consumers, we pledge that we will make every effort to ensure that prices are fair and reasonable, that claims will be handled fairly, promptly and professionally and that, in dealings with us, consumers will be treated with respect and courtesy. We will continuously strive to improve consumer information and education on

prices, services, safety and quality of insurance to help them shop wisely.

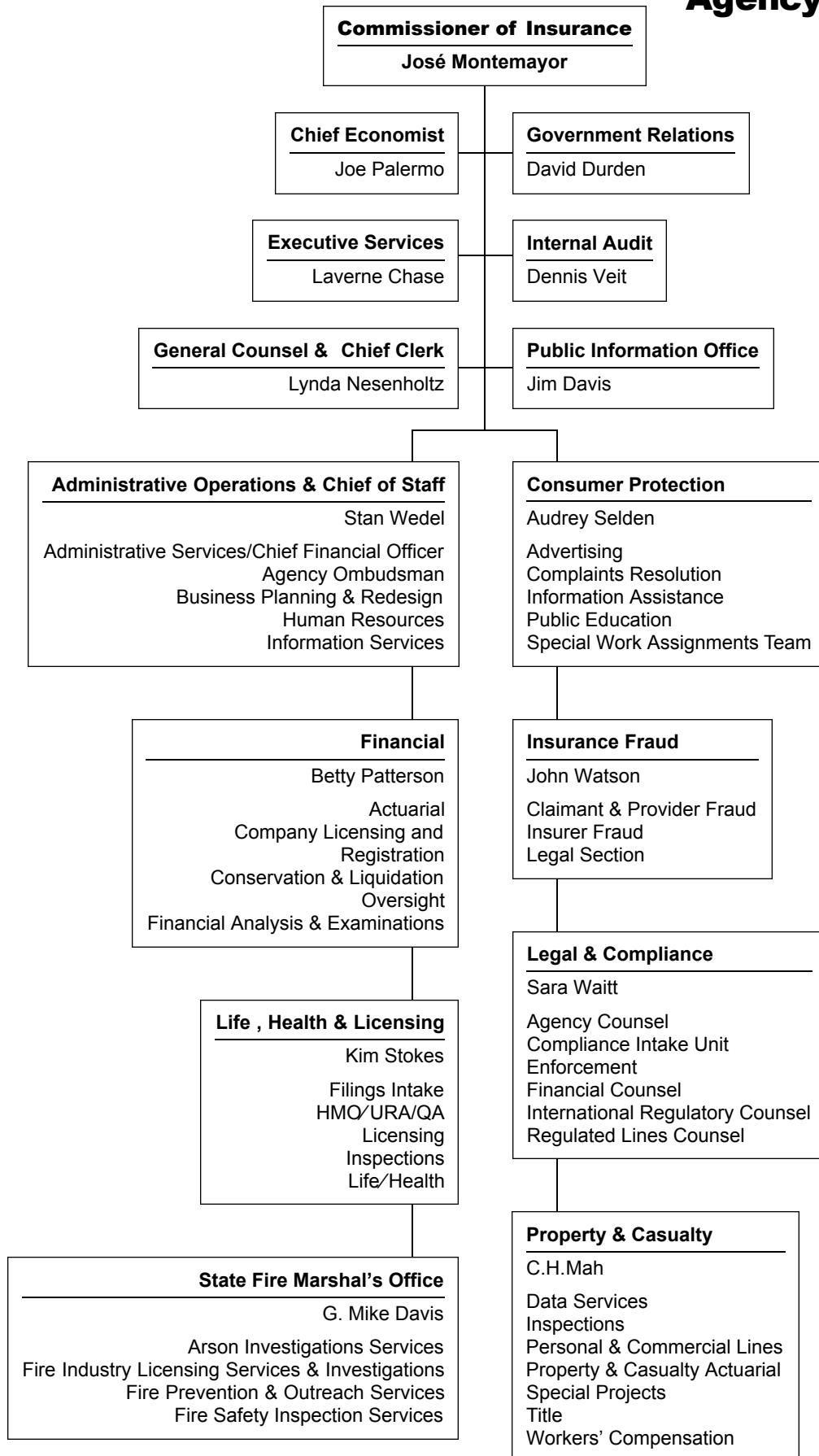
- In meeting their needs as taxpayers, we promise to maximize efficiency of Department operations, to eliminate unnecessary functions and paperwork burdens and to minimize bureaucracy.
- In earning their trust, we pledge to maintain the highest ethical standards in words and actions.
- We believe that we have an equally important responsibility to each other as employees and to all of the people who work with us.
- We respect the dignity and recognize the contribution of each employee.
- We encourage and will be responsive to all suggestions and concerns.
- We are pledged to equal opportunity in employment, retention and advancement. We pledge to encourage and assist employees in developing to their full potential.
- We are committed to a diverse work force.
- We pledge to provide leadership that is fair, responsive and ethical.
- We believe that each employee is an integral part of our team effort to serve the people of the State of Texas. We pledge to share our knowledge and to assist each other in achieving the mission of the agency.
- We believe in decentralizing power and delegating authority to our employees. We pledge to do our best individually and recognize that each of us is responsible and accountable for our actions.
- We have a responsibility to the people working in the insurance industry.
- We pledge to make Texas a place where industry will want to do business.
- We pledge to support a fair, efficient and productive industry dedicated to the long-term concept of insurance, and its contributions to society.
- We pledge to communicate concerns, problems and issues to the industry. We encourage industry to communicate its suggestions and concerns to the Department.
- We pledge to assist the industry in an efficient and responsive manner in meeting its obligations to the public and its policyholders.

## Explanatory Note

References to statutes and insurance-related legislation: Unless otherwise noted, statutory references, including citations of articles, refer to the *Texas Insurance Code*.

# Agency Organization Chart

As of August 31, 2000



**[This page intentionally left blank.]**