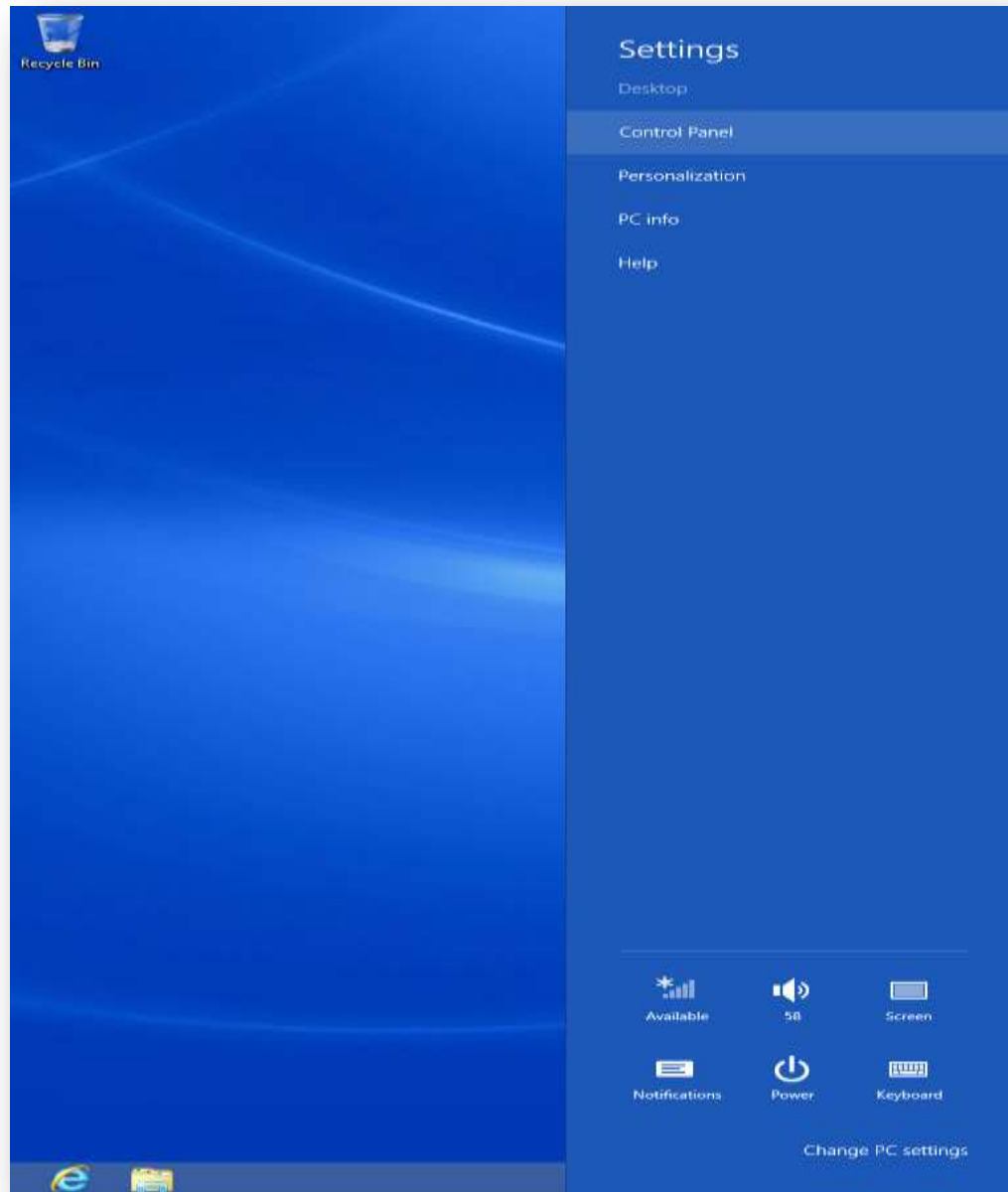
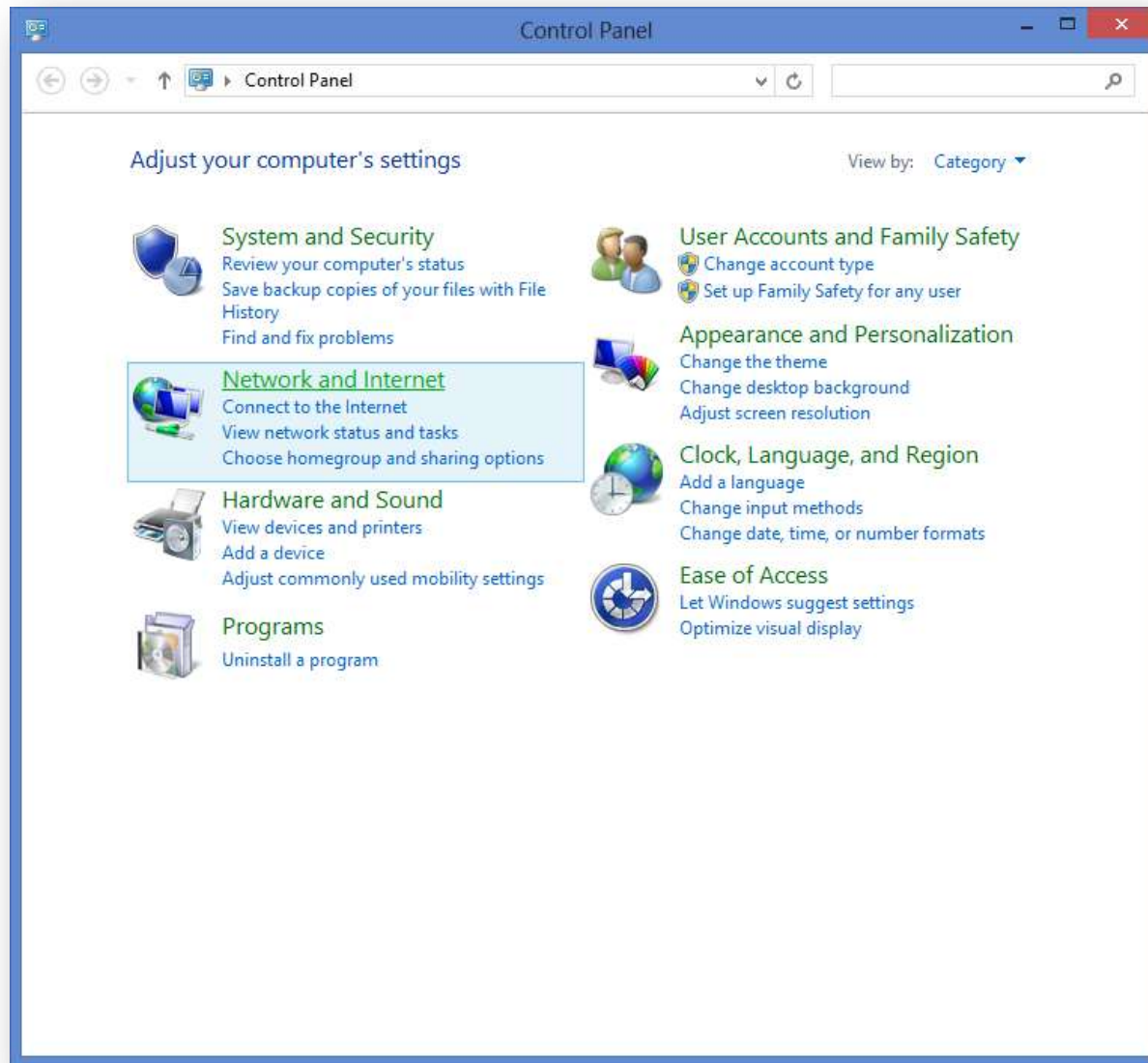


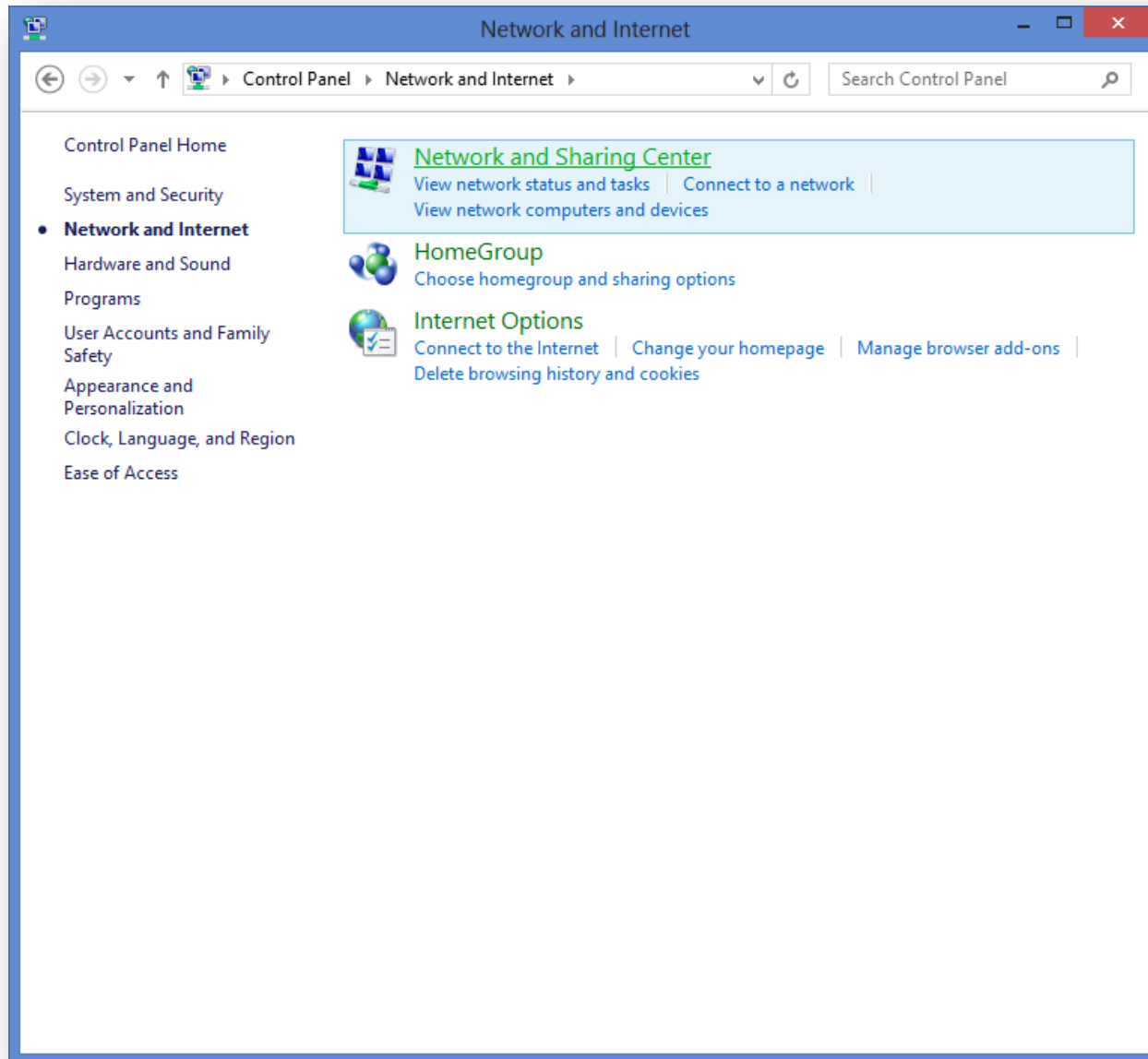
Open the **Charms Bar** and choose **Settings**



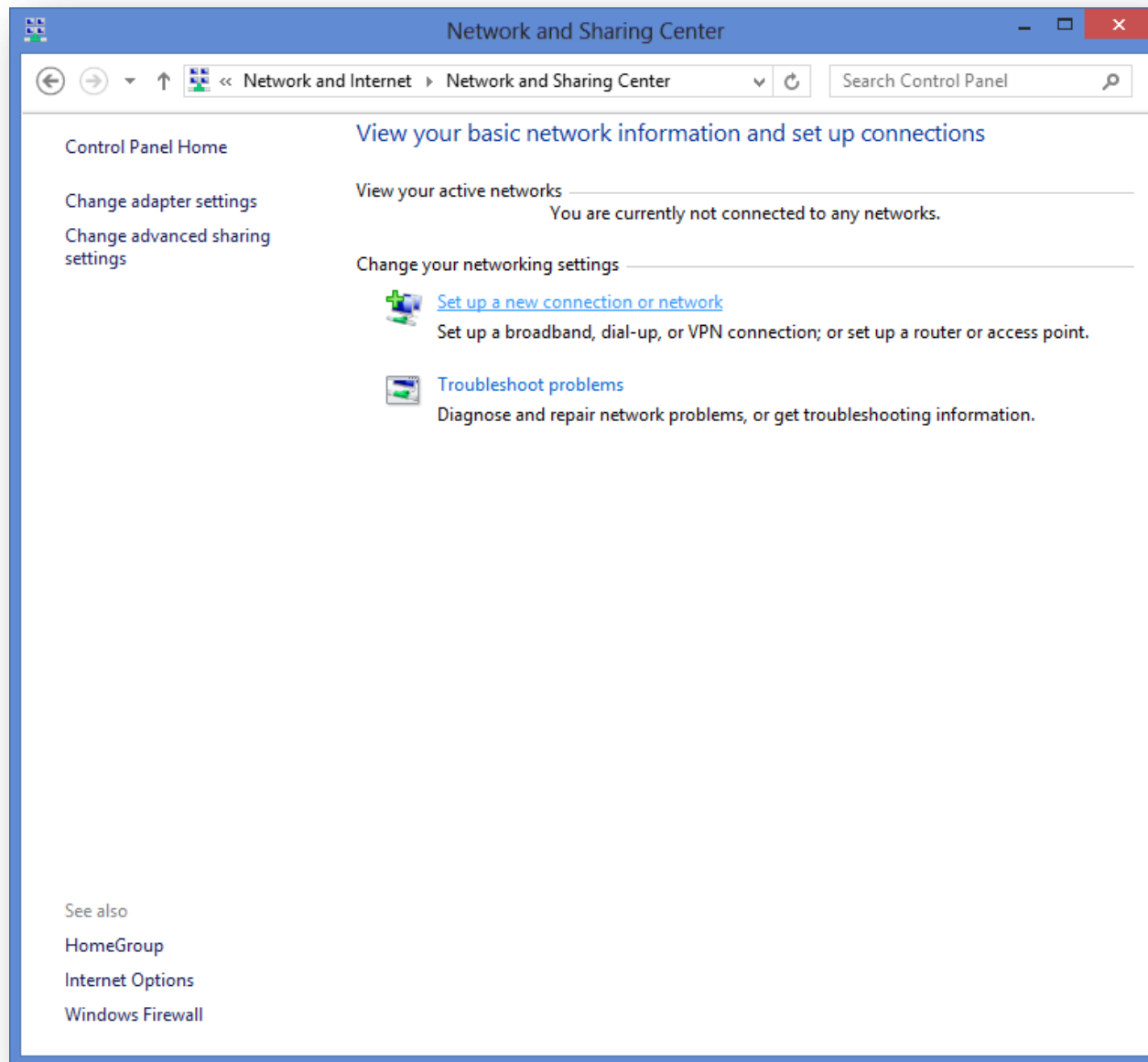
Choose **Control Panel**



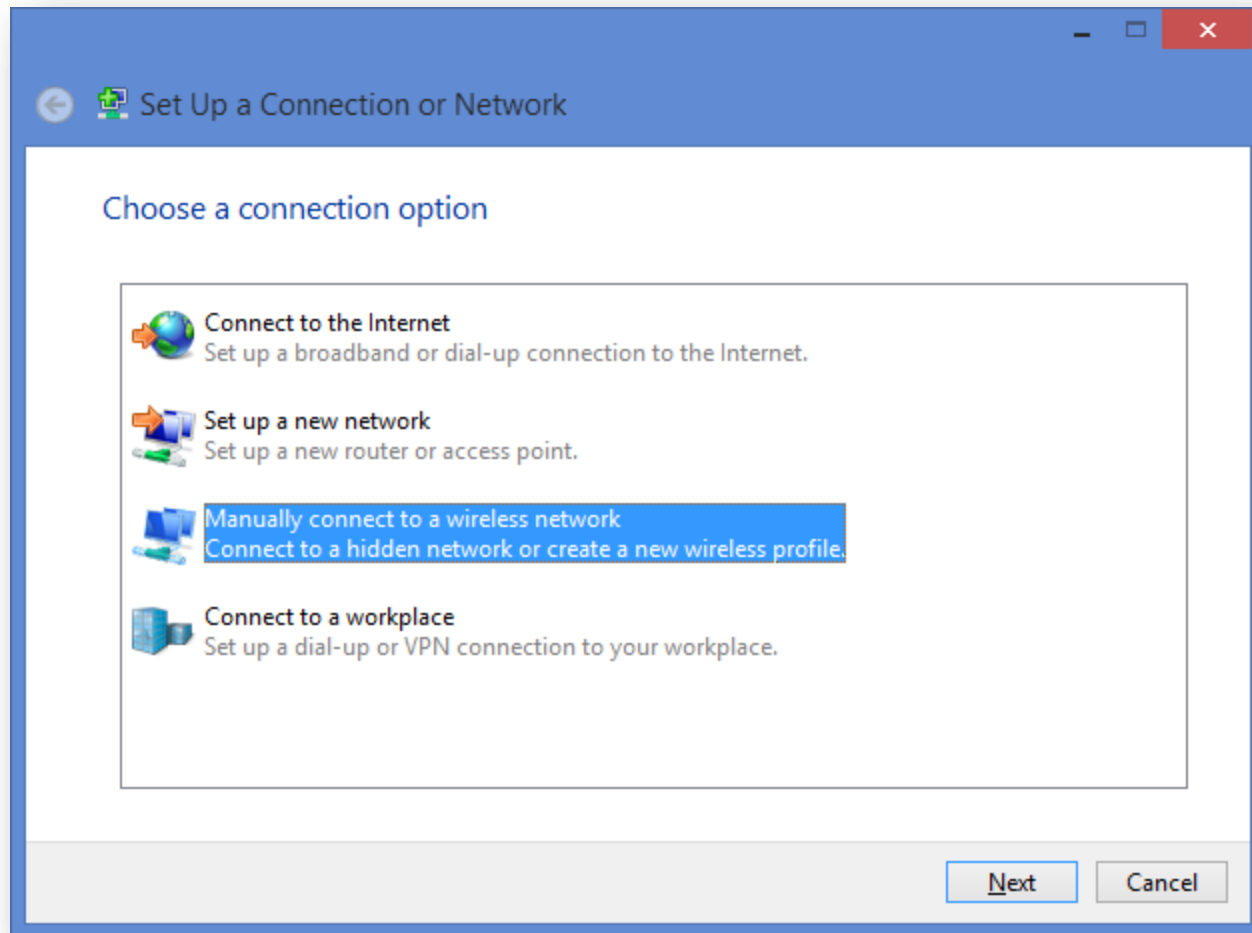
Choose **Network and Internet**



Choose **Network and Sharing Center**



Choose **Set up a new connection or network**



Choose **Manually connect to a wireless network**

Manually connect to a wireless network

Enter information for the wireless network you want to add

Network name:

Security type:

Encryption type:

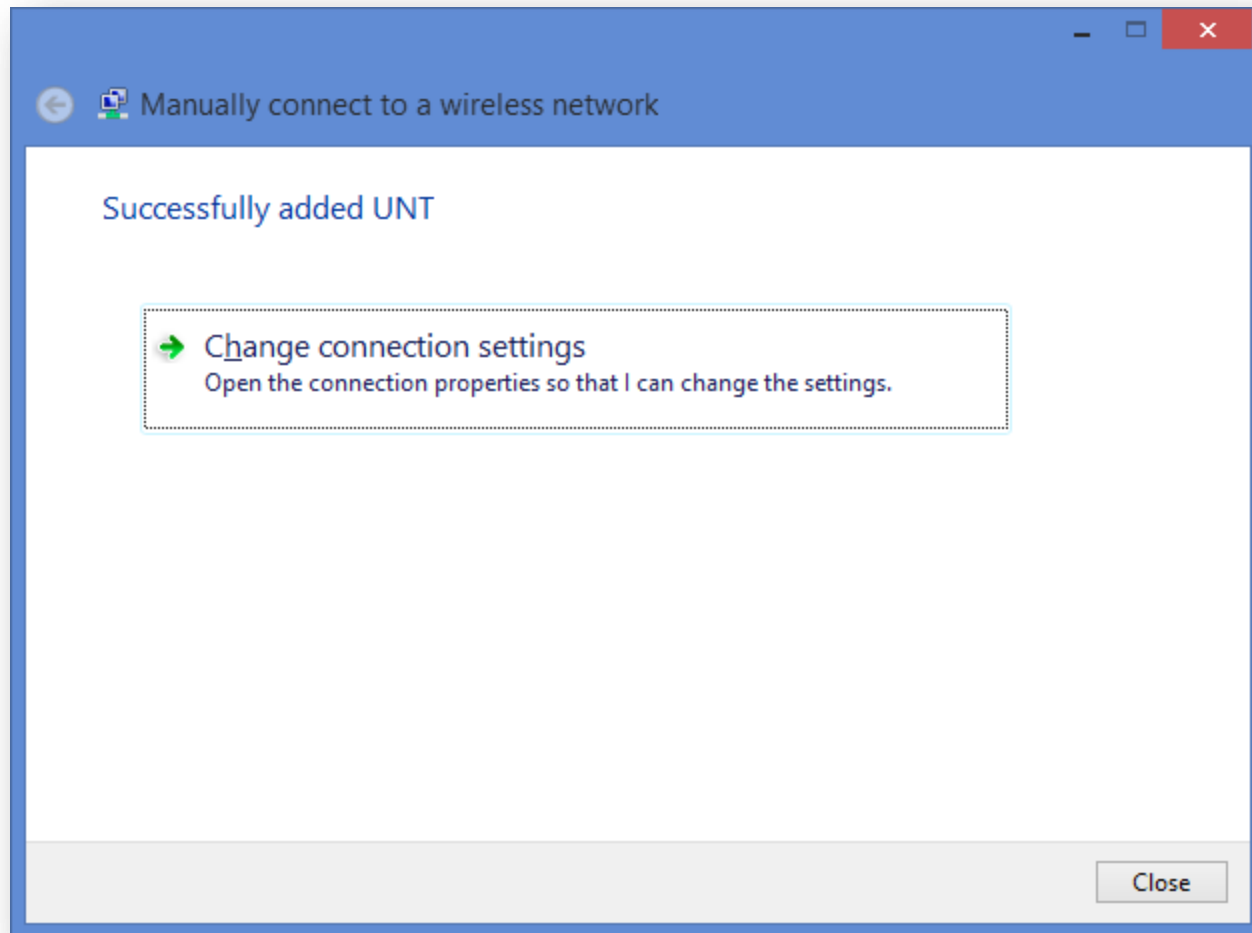
Security Key: Hide characters

Start this connection automatically

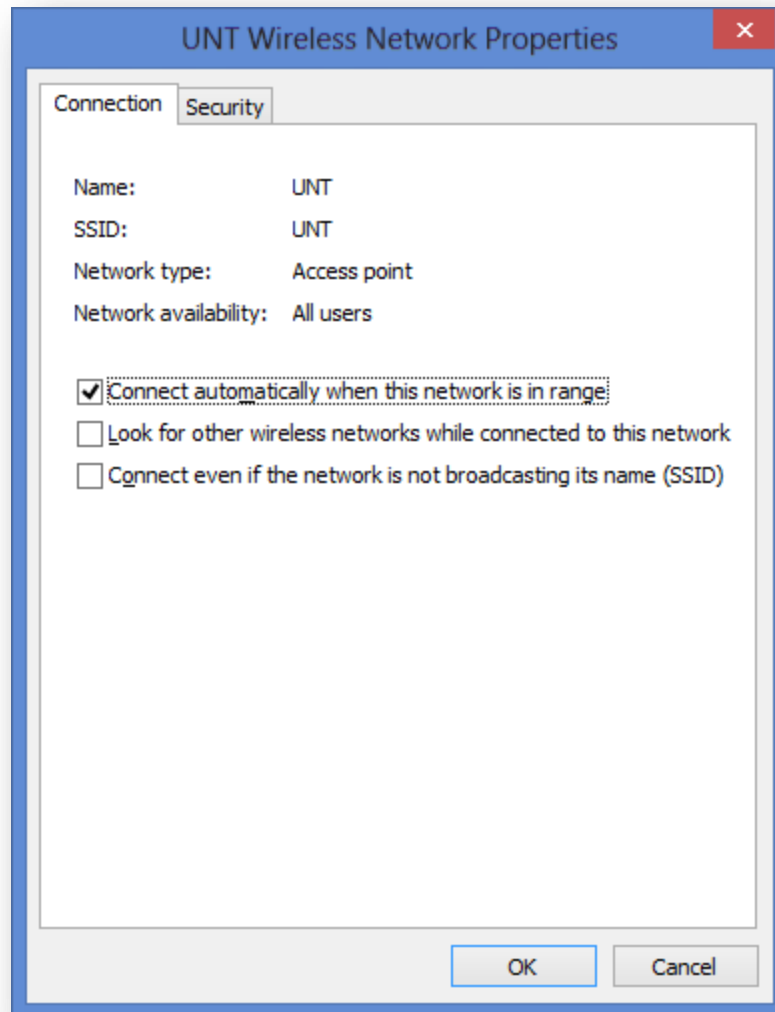
Connect even if the network is not broadcasting

Warning: If you select this option, your computer's privacy might be at risk.

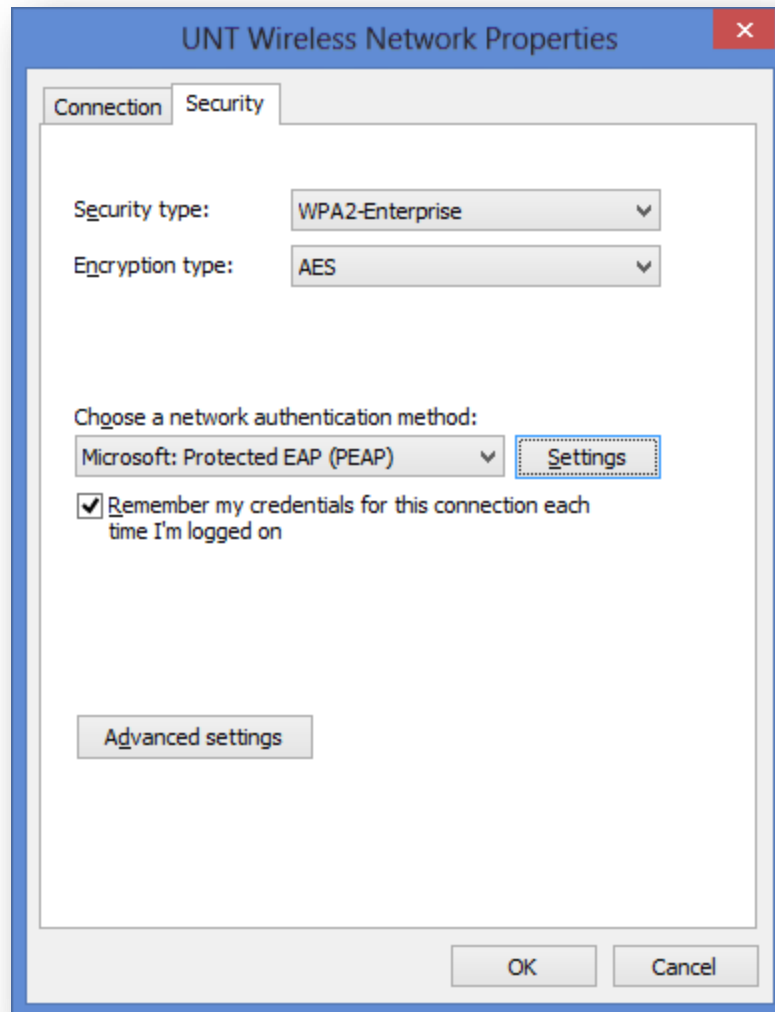
Enter the information as shown above and click **Next**



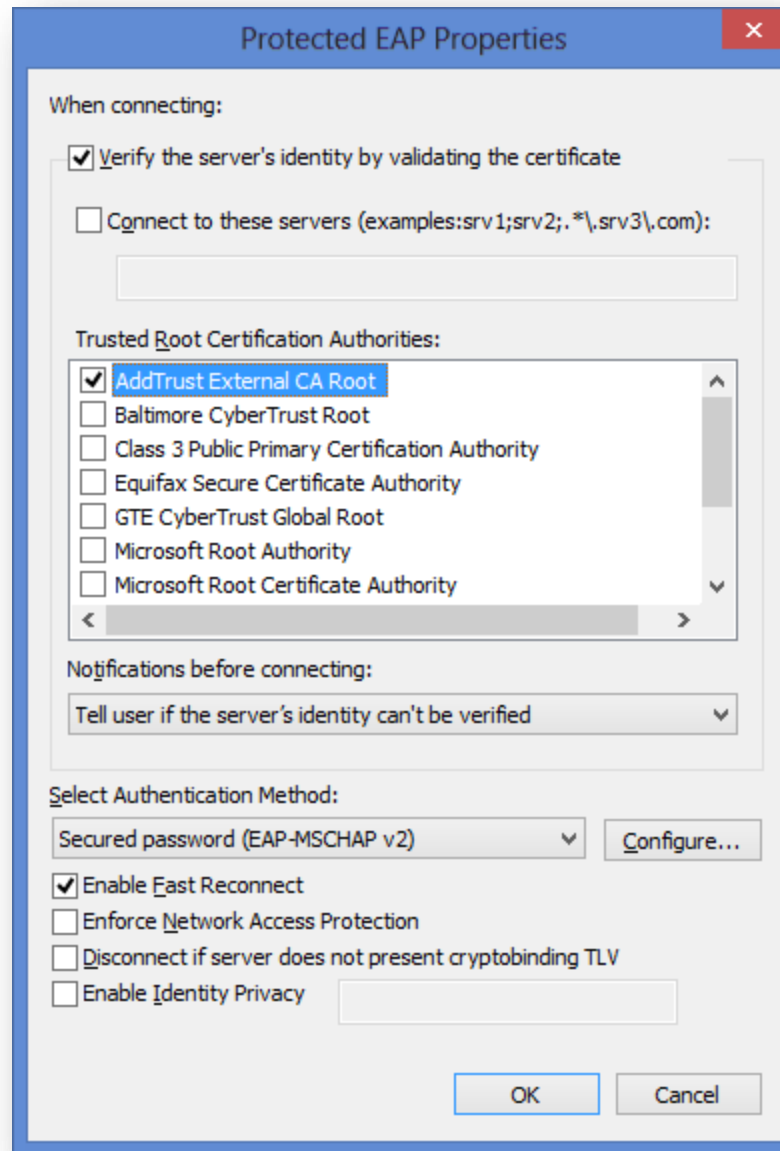
Choose **Change connection settings**



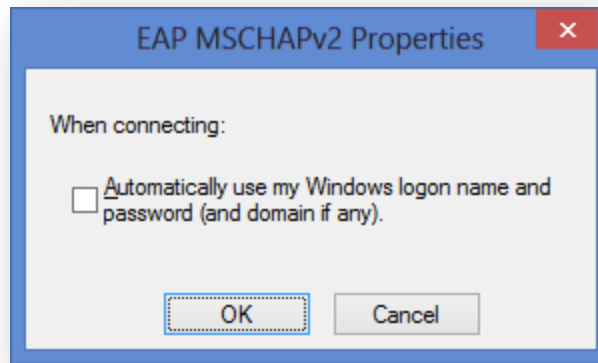
Click on the **Security** tab



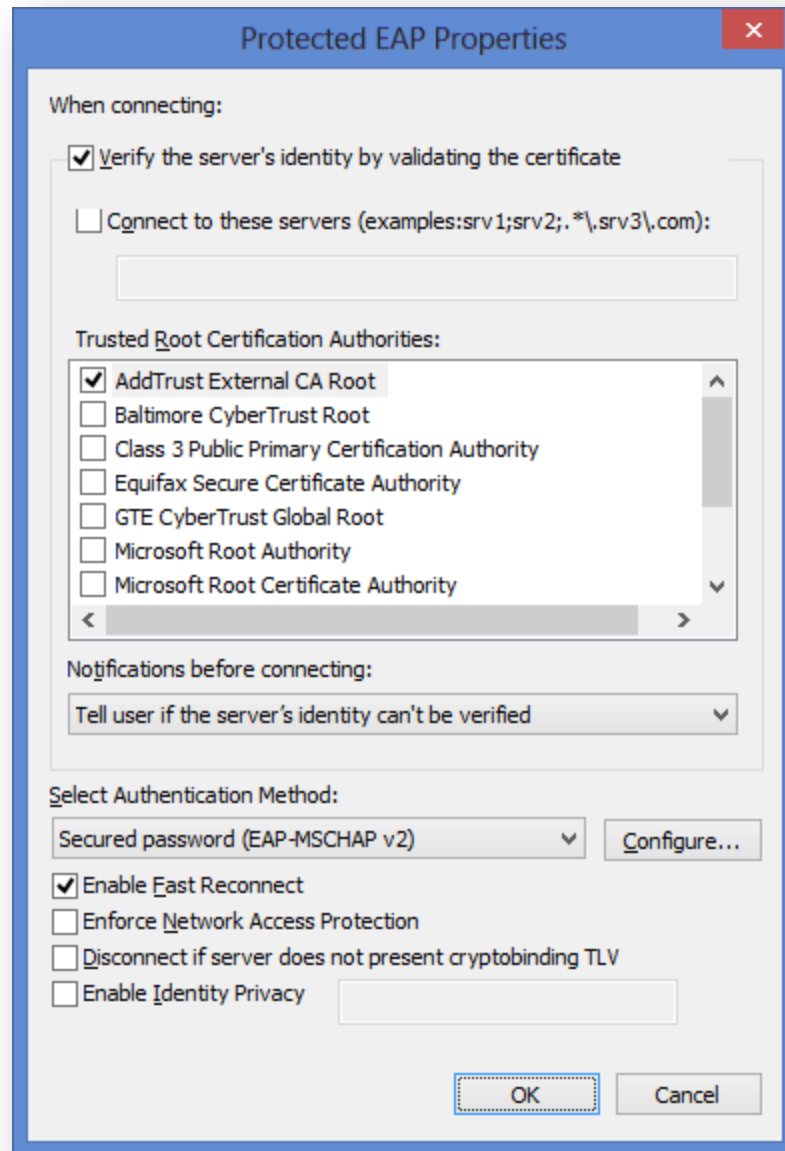
Click on the **Settings** button



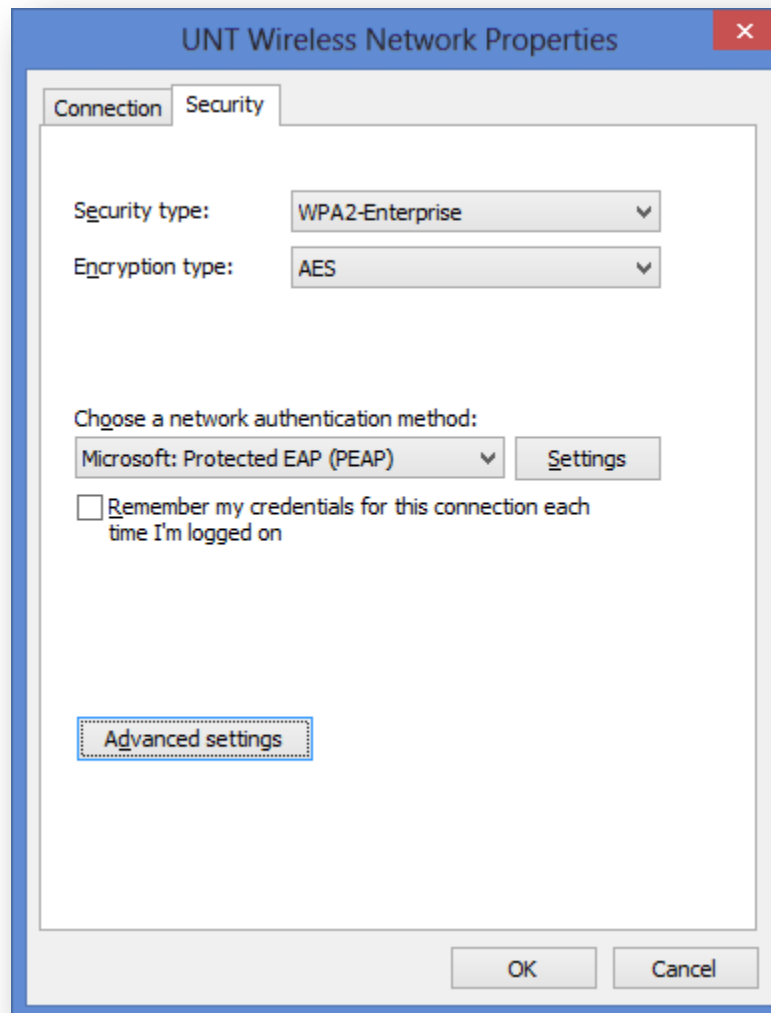
Check **AddTrust External CA Root** and then click the **Configure** button



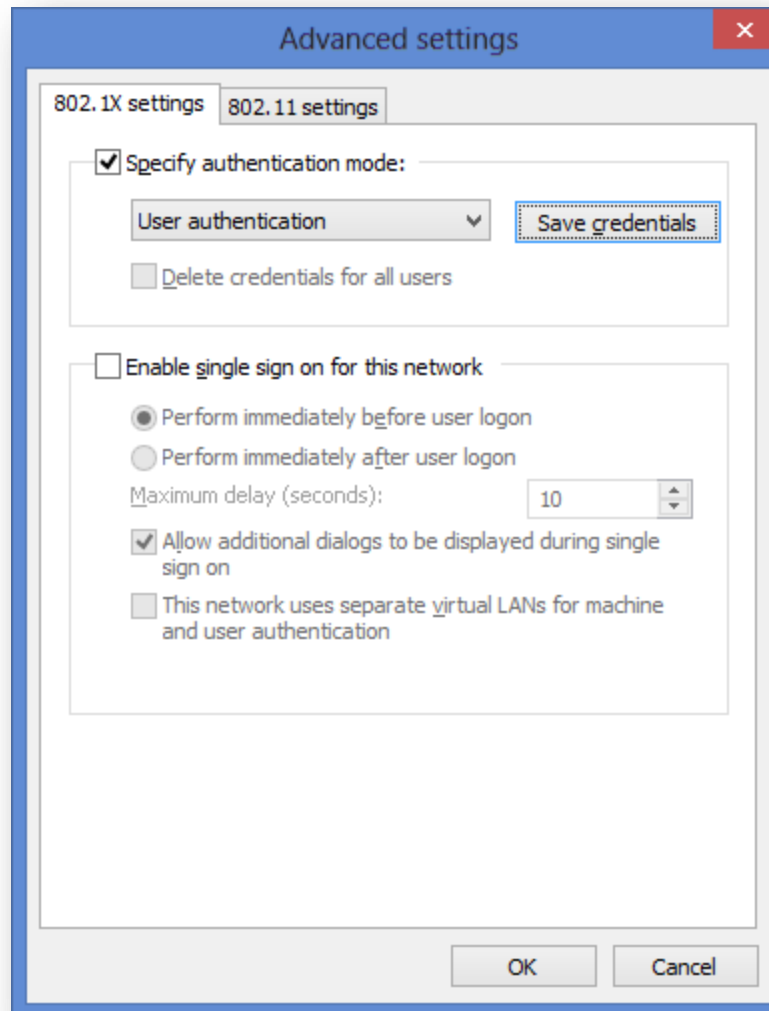
Uncheck the checkbox and click **OK**



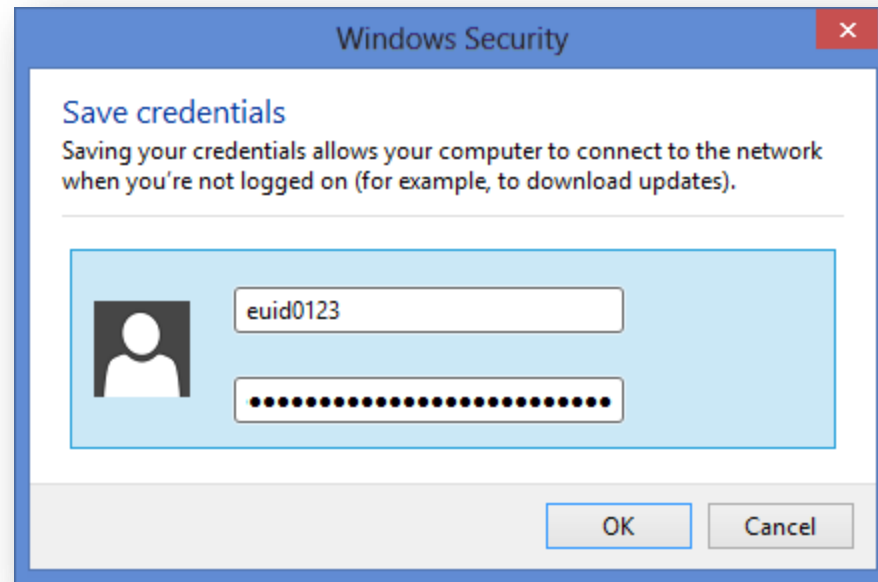
Click the **OK** button



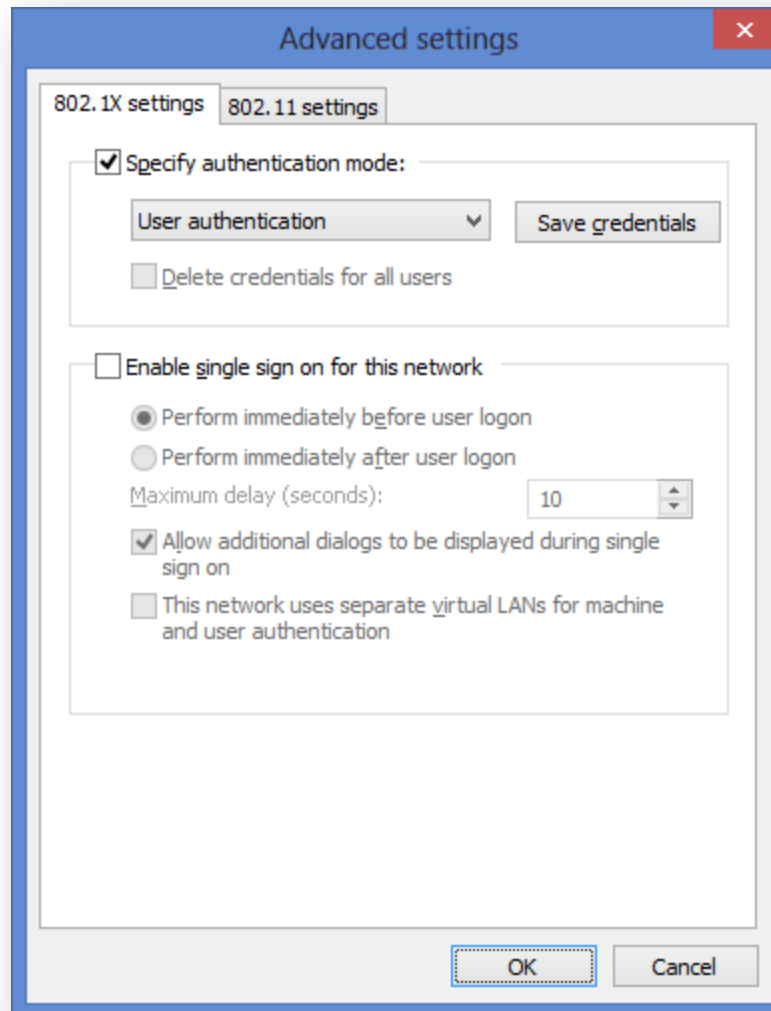
Uncheck the **Remember my credentials** box then click the **Advanced settings** button



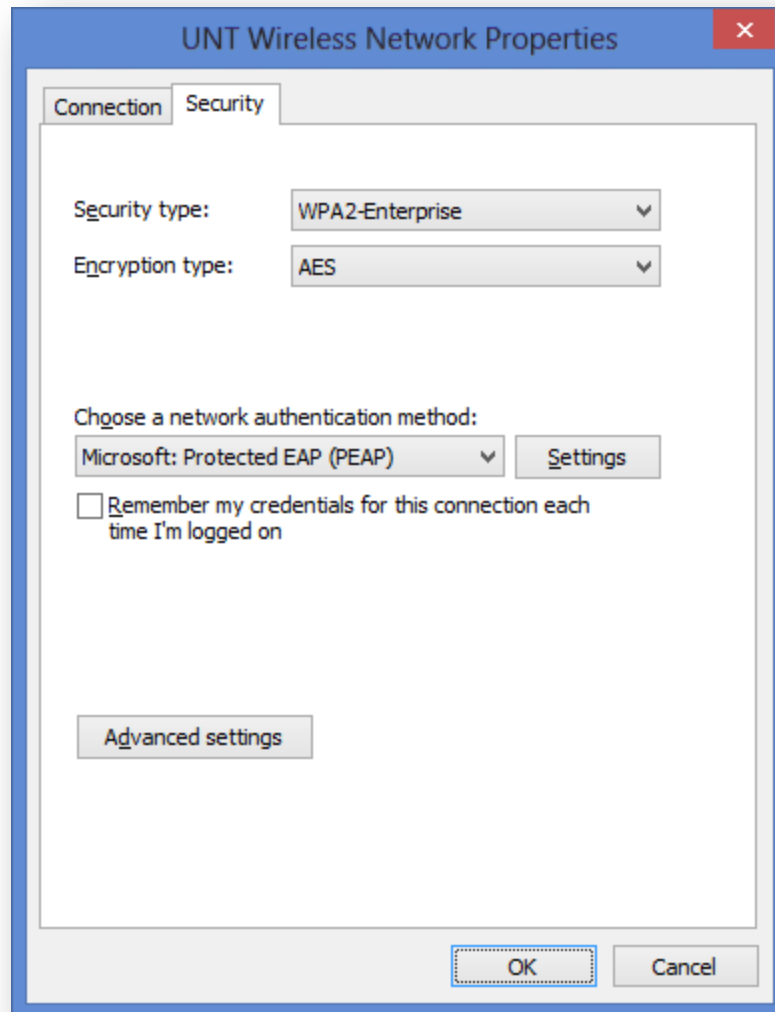
Check **Specify authentication mode** and select **User authentication** in the dropdown menu, then click **Save credentials**



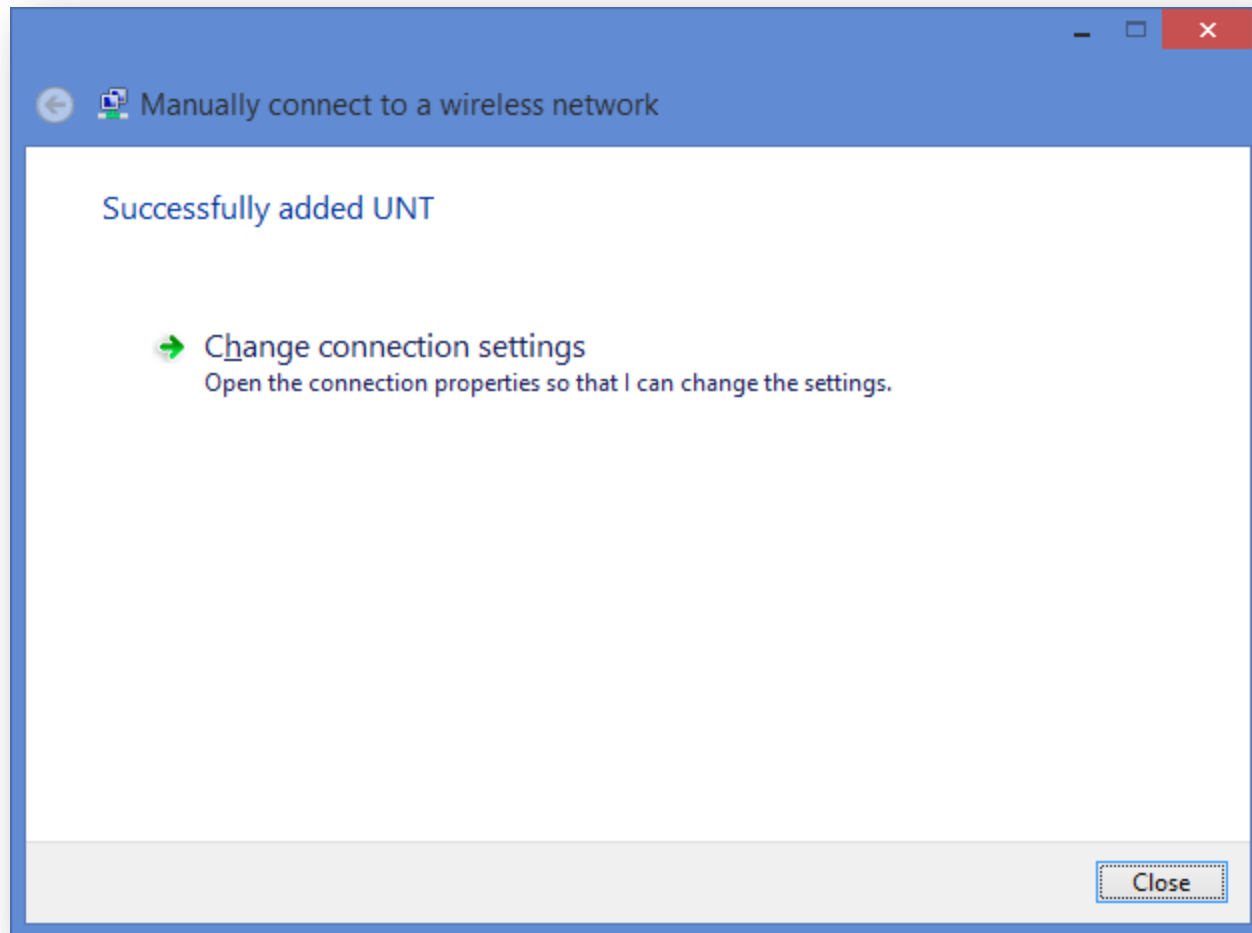
Enter your EUID and your password then click **OK**



Click **OK**



Click **OK**



Click **Close**

You are now configured for UNT!