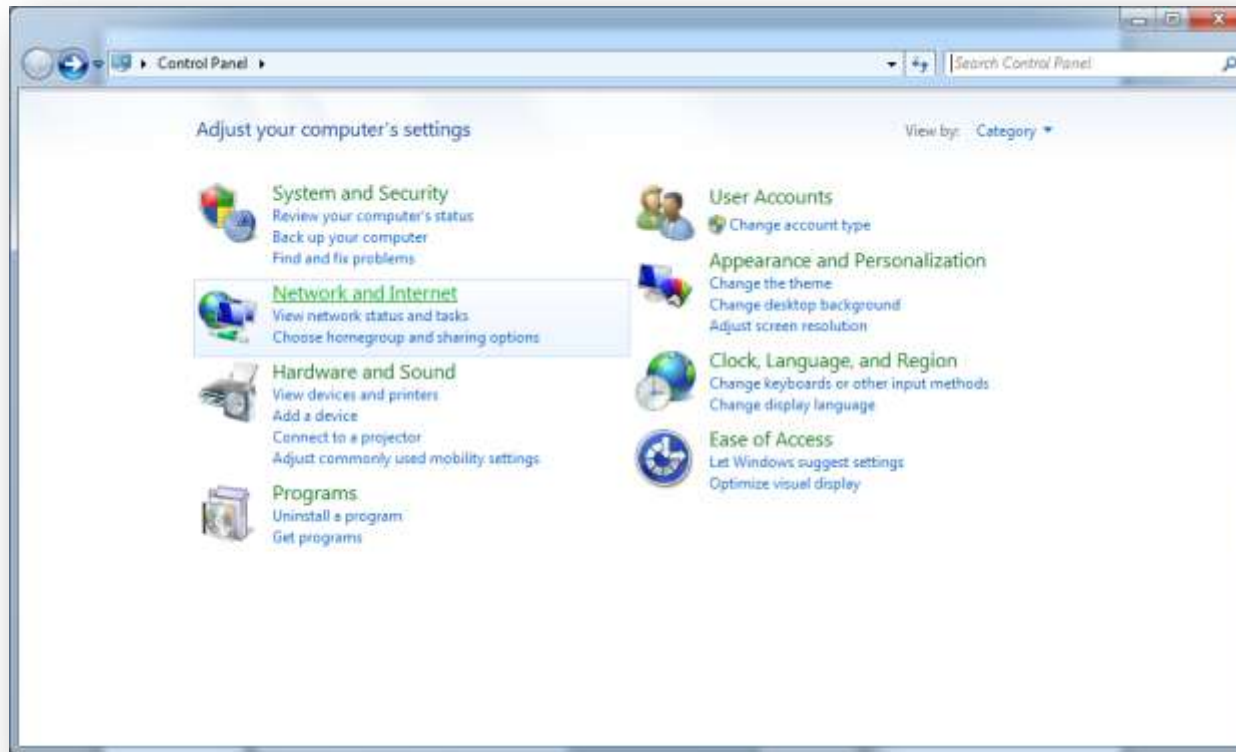
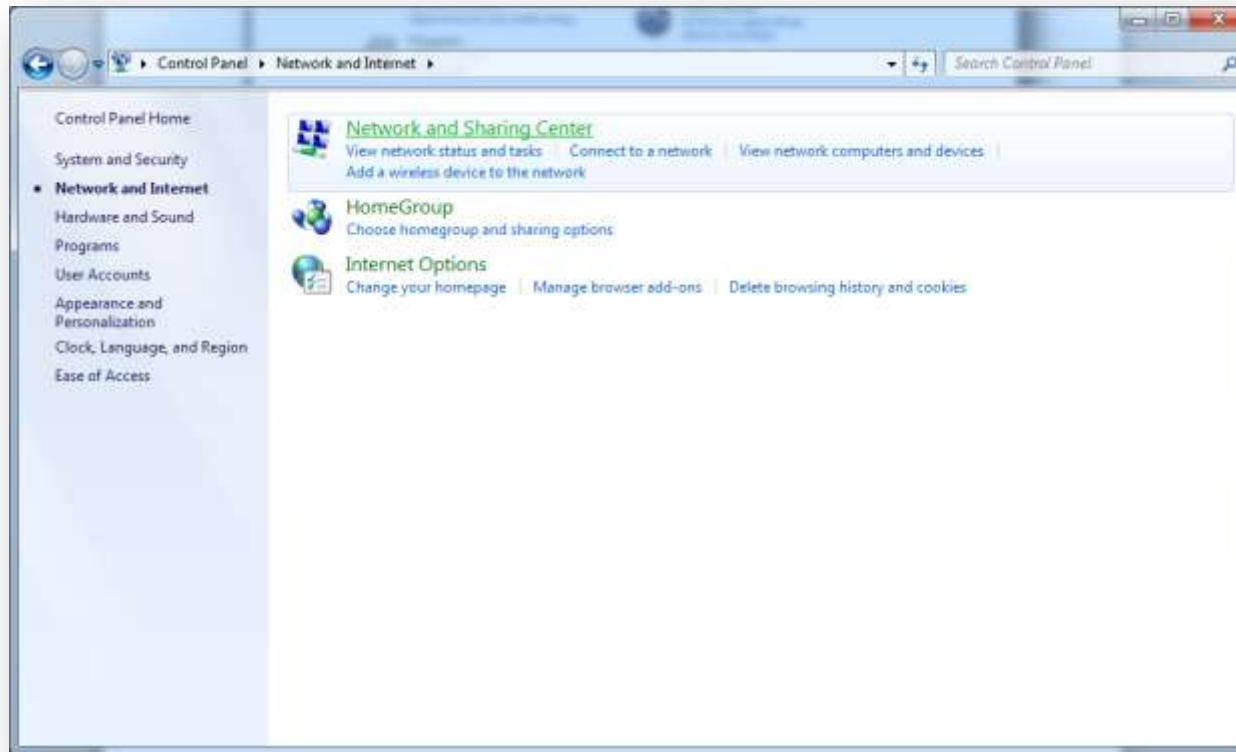


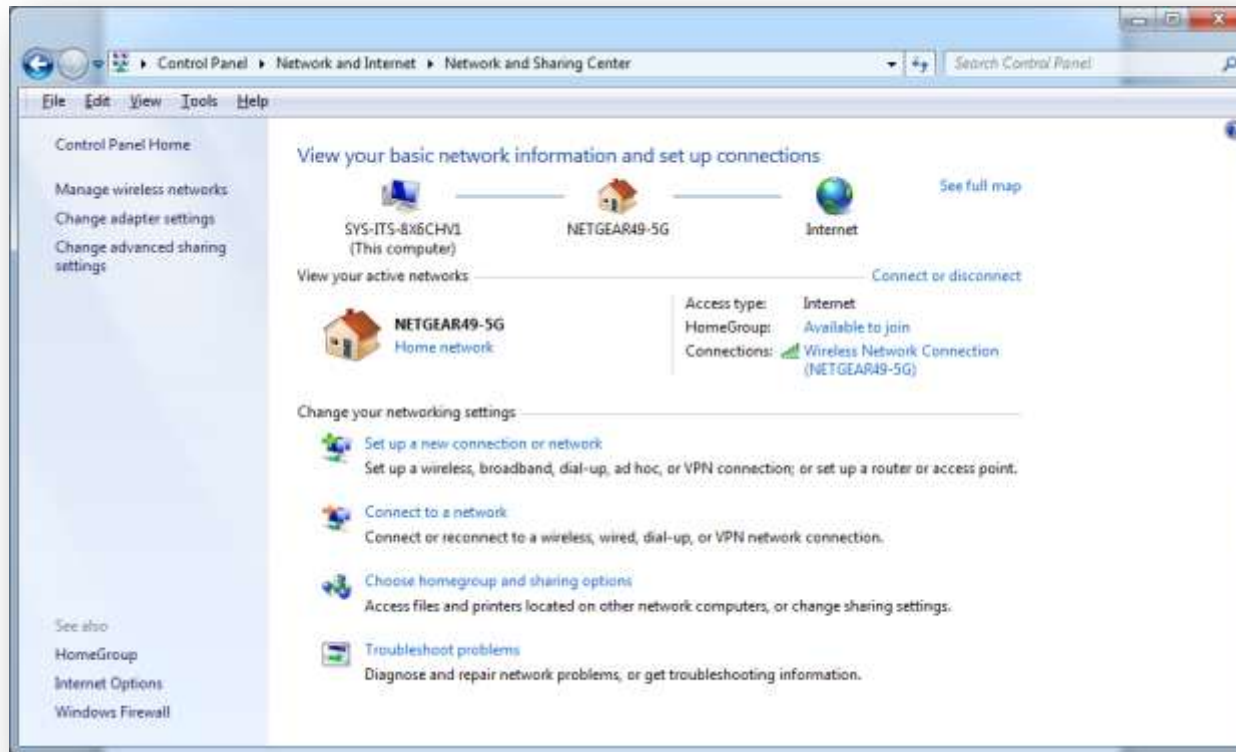
Click on the **Windows Start button** and choose **Control Panel**



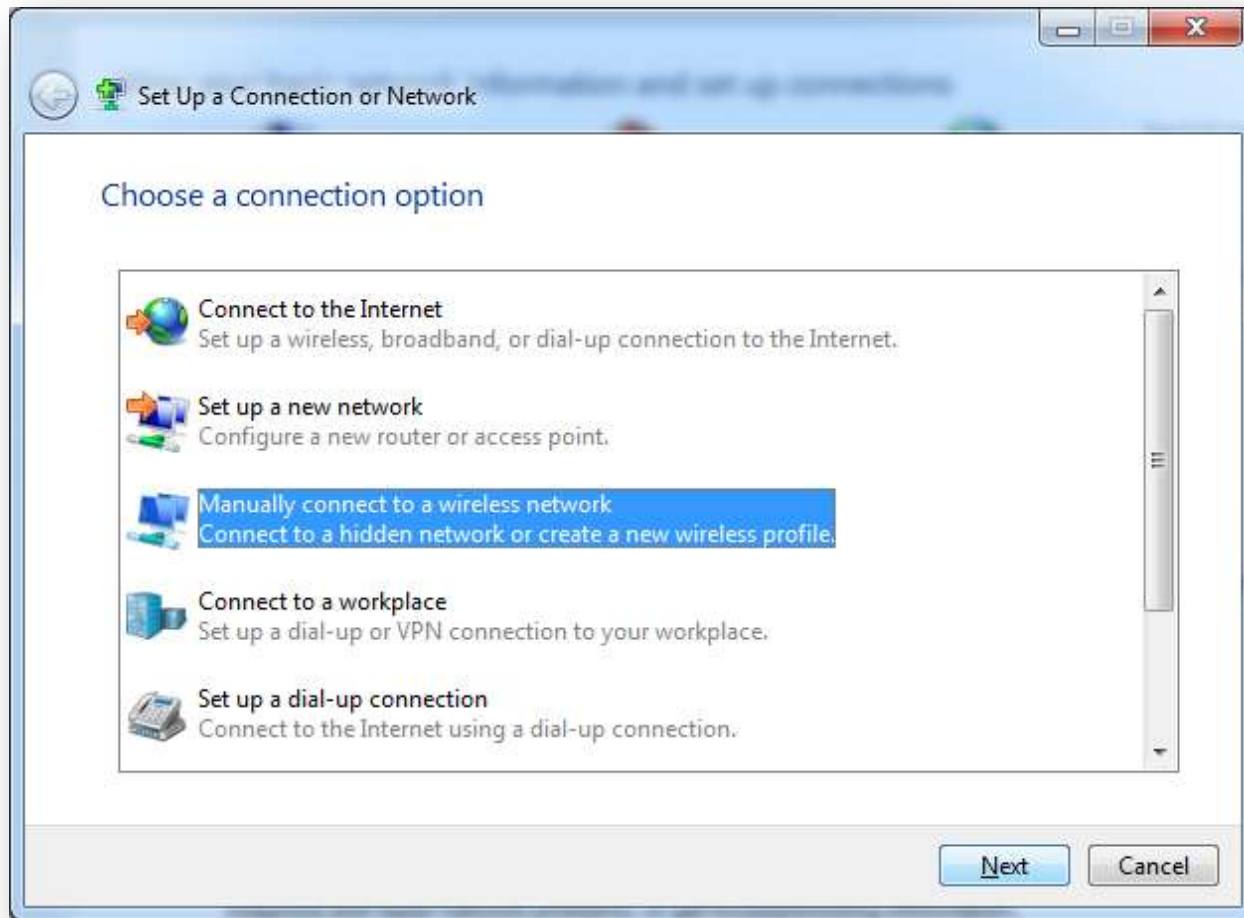
Choose **Network and Internet**



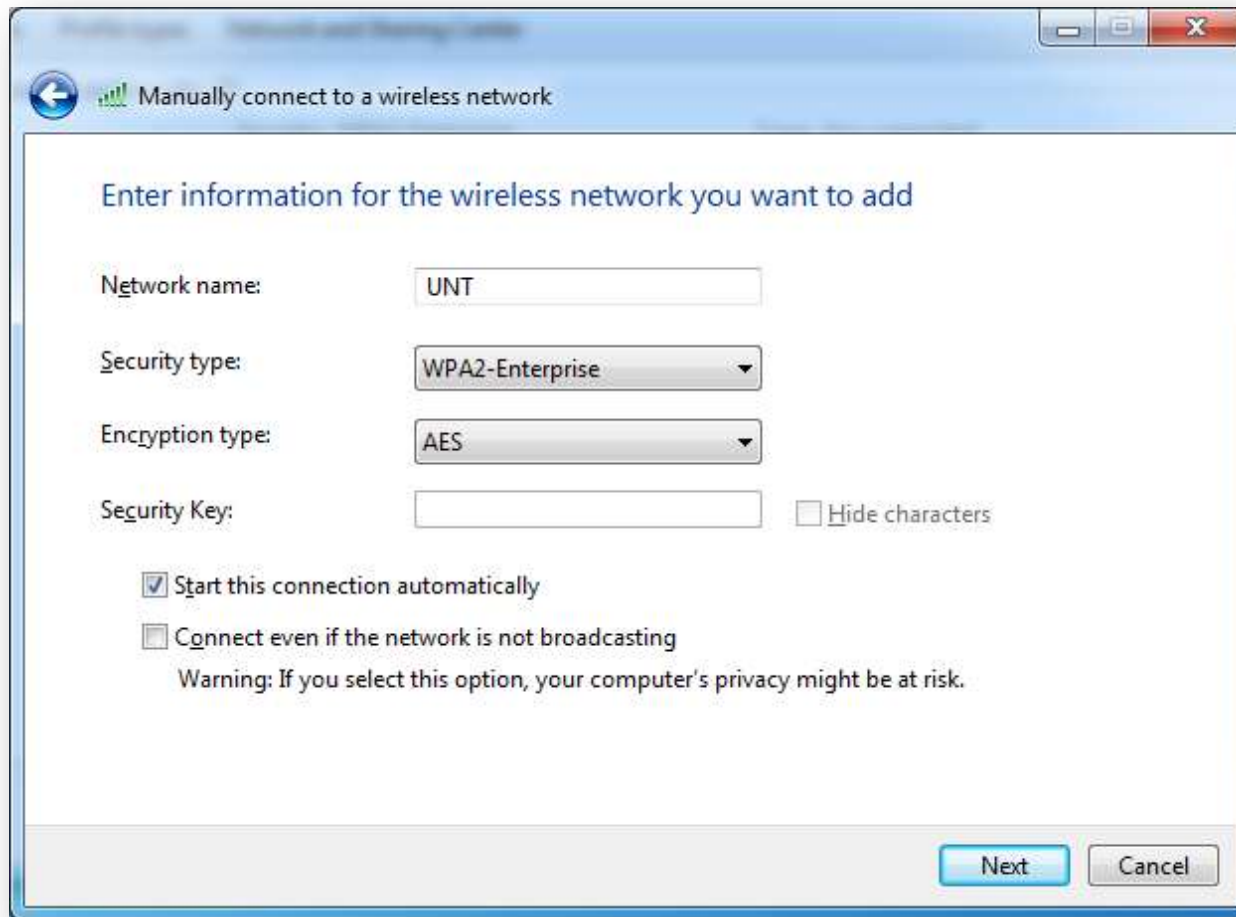
Choose **Network and Sharing Center**



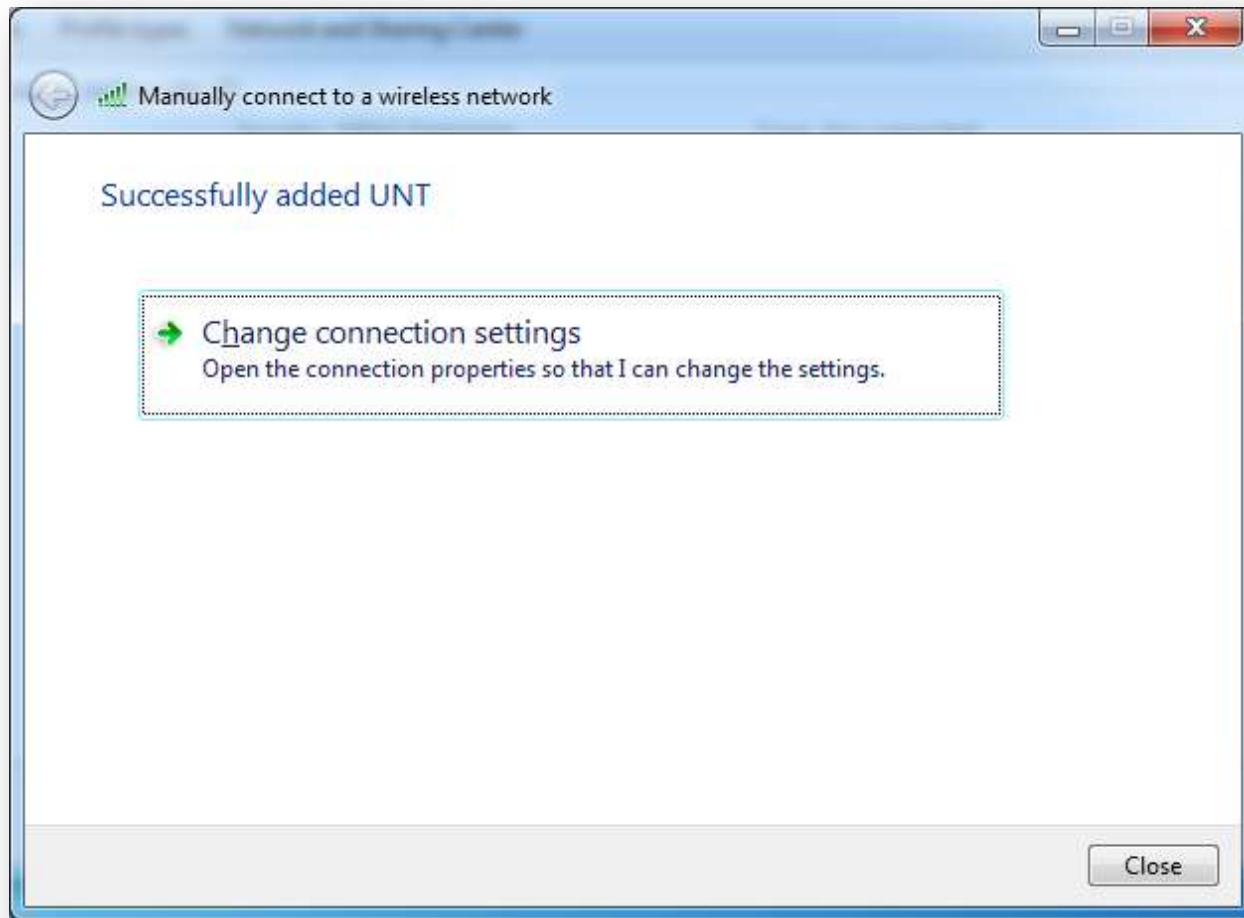
Choose **Set up a new connection or network**



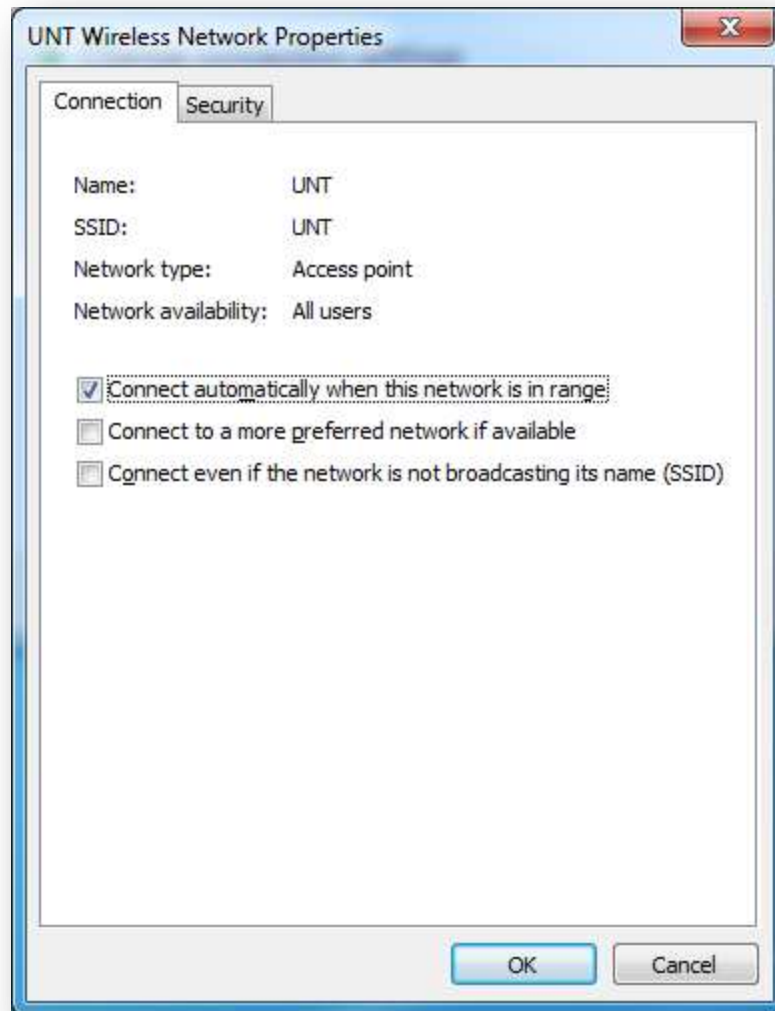
Choose **Manually connect to a wireless network** and click **Next**



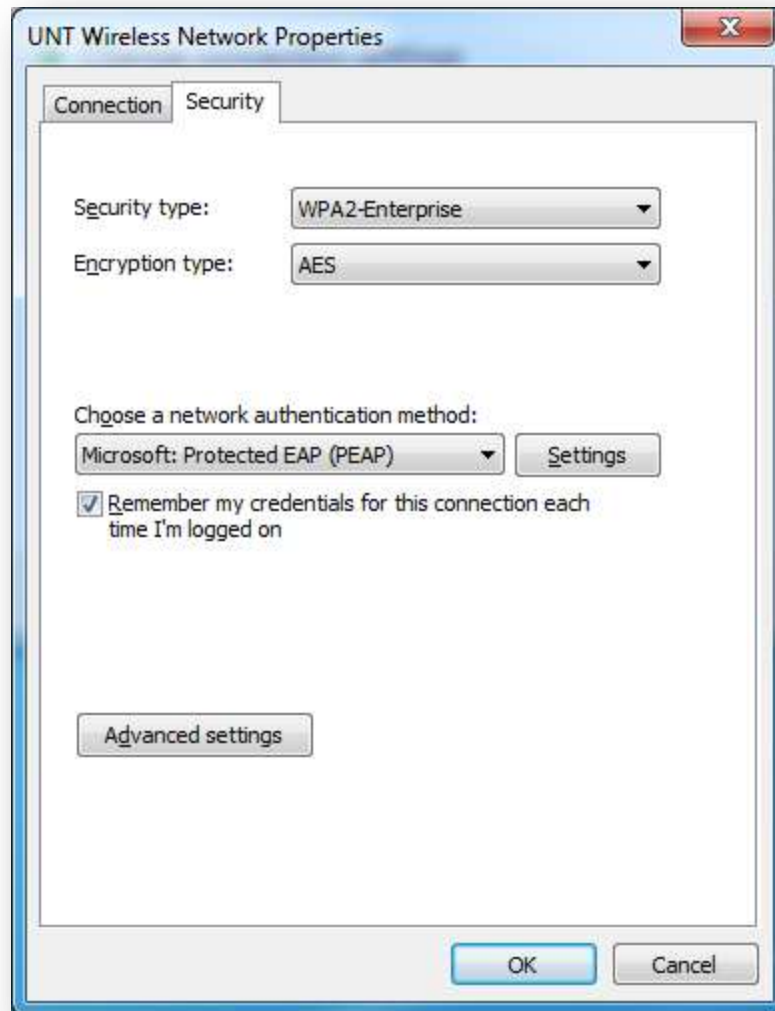
Enter the information as shown above and click **Next**



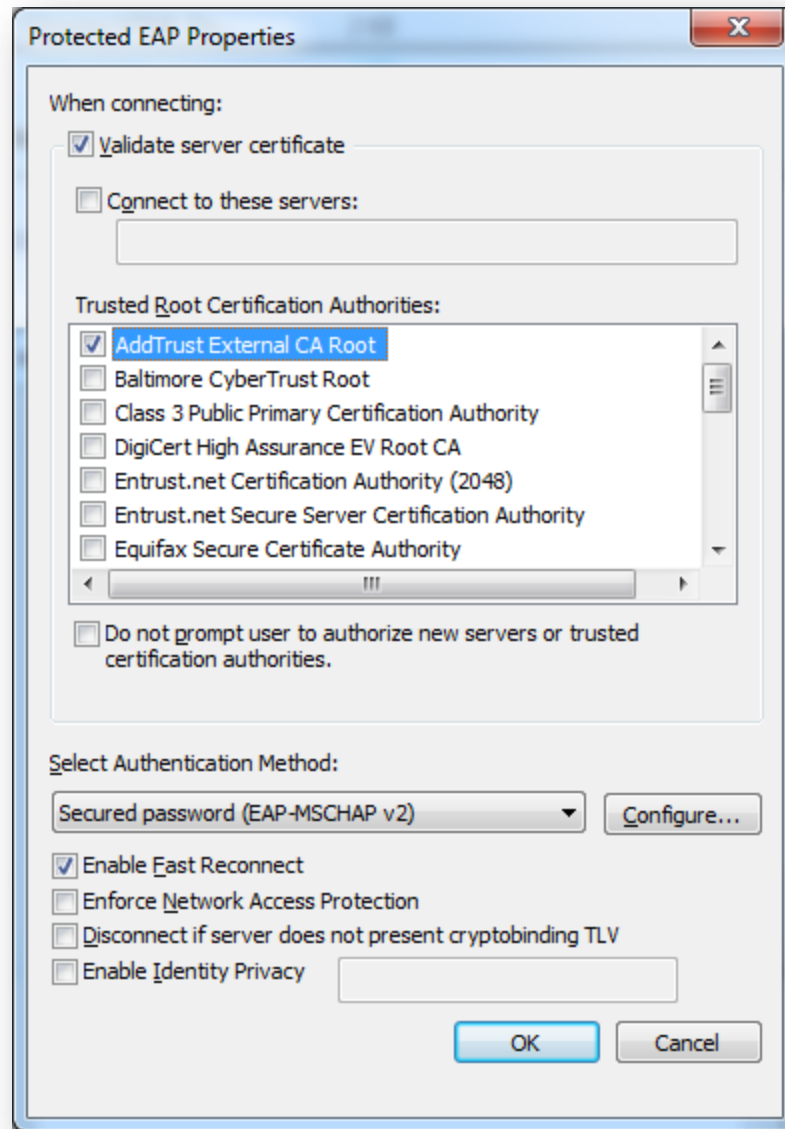
Choose **Change connection settings**



Click on the **Security** tab



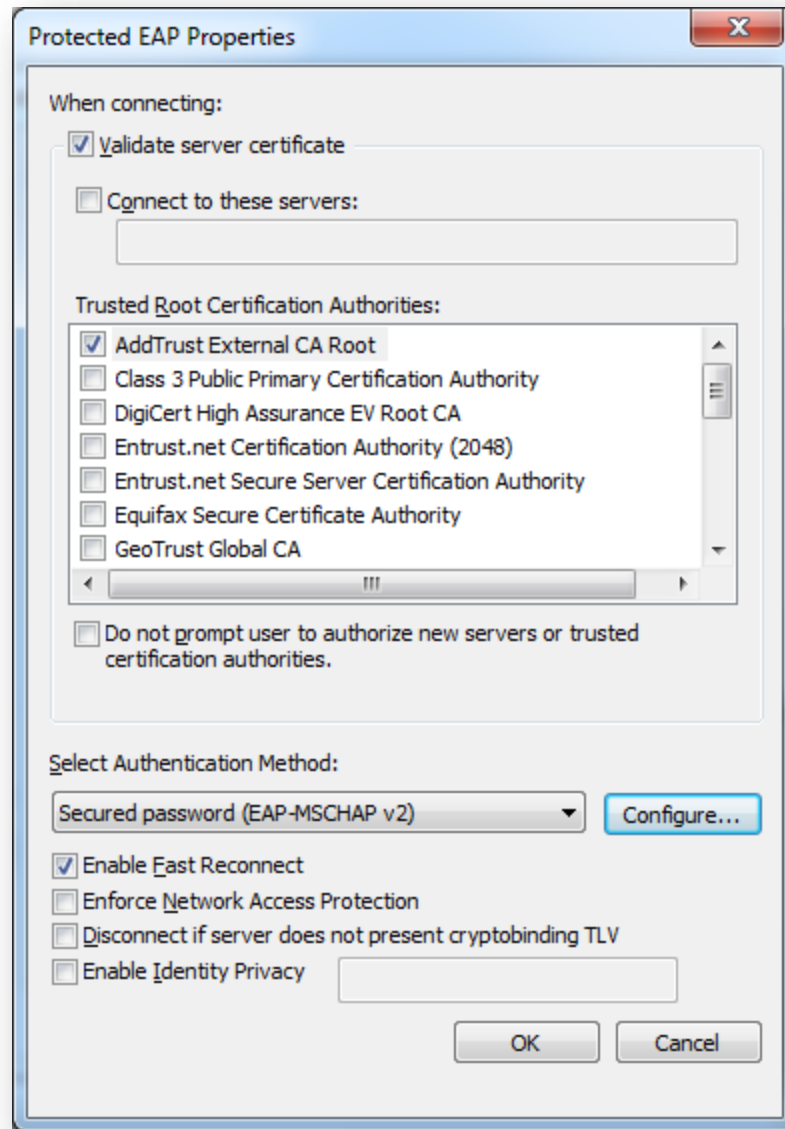
Click on the **Settings** button



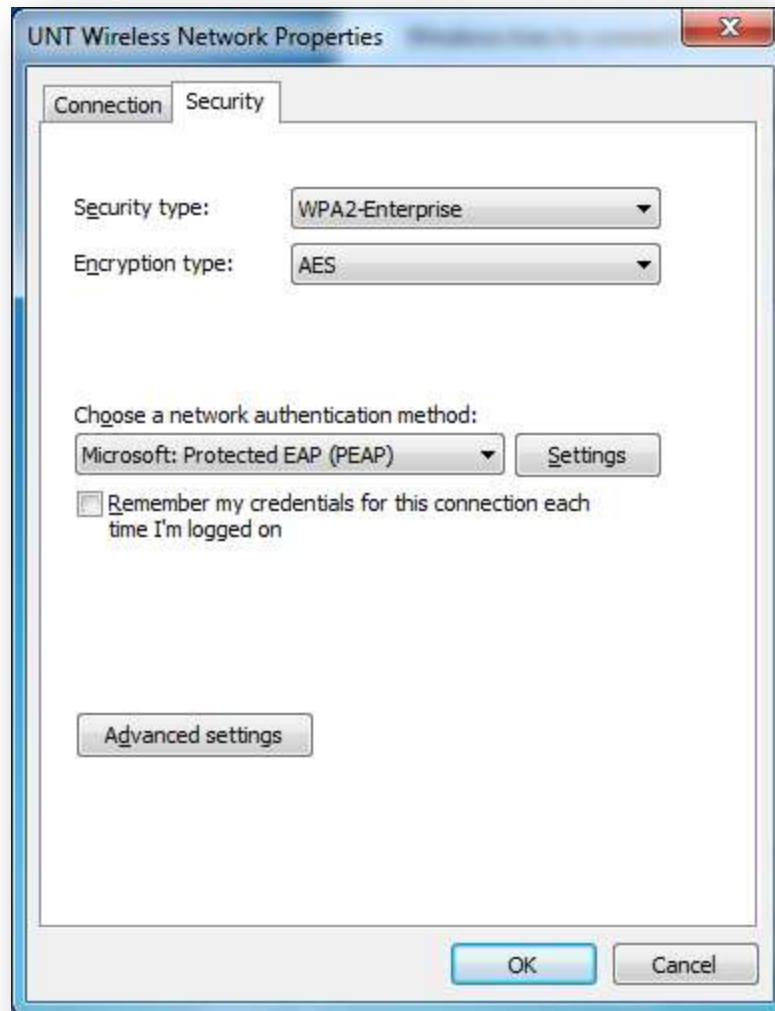
Check **AddTrust External CA Root** and then click the **Configure** button



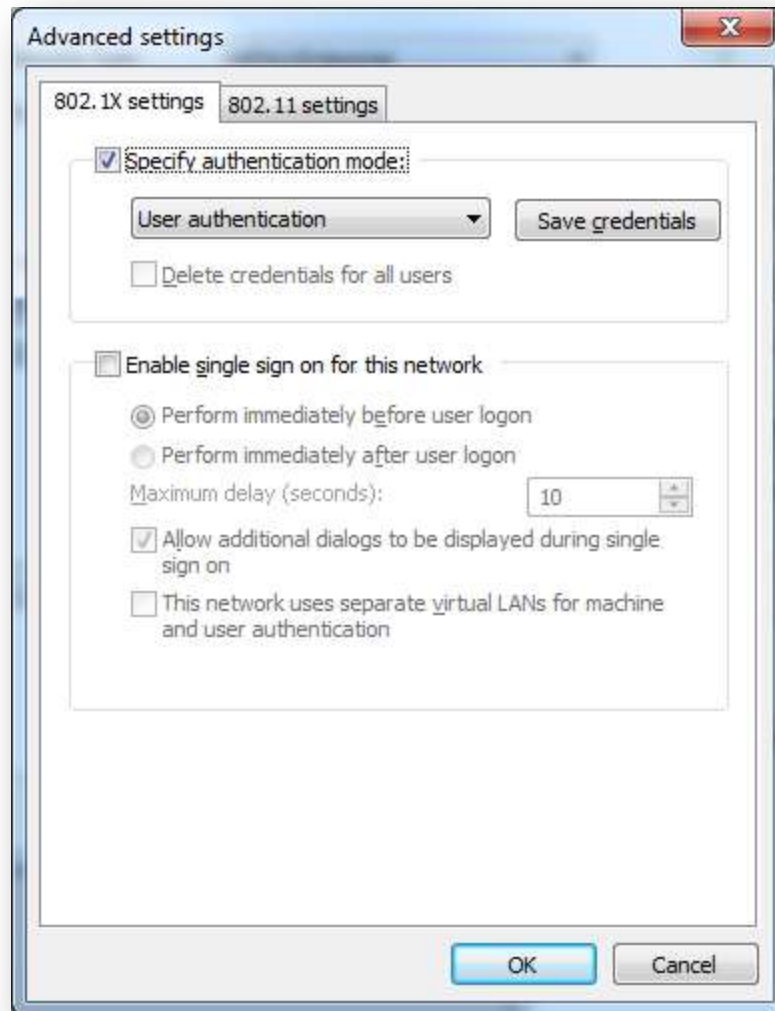
Uncheck the checkbox and click **OK**



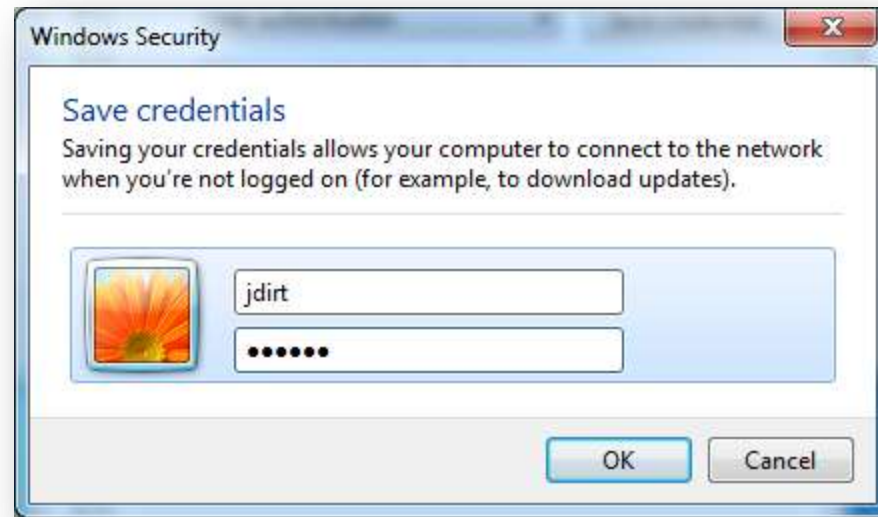
Click the **OK** button



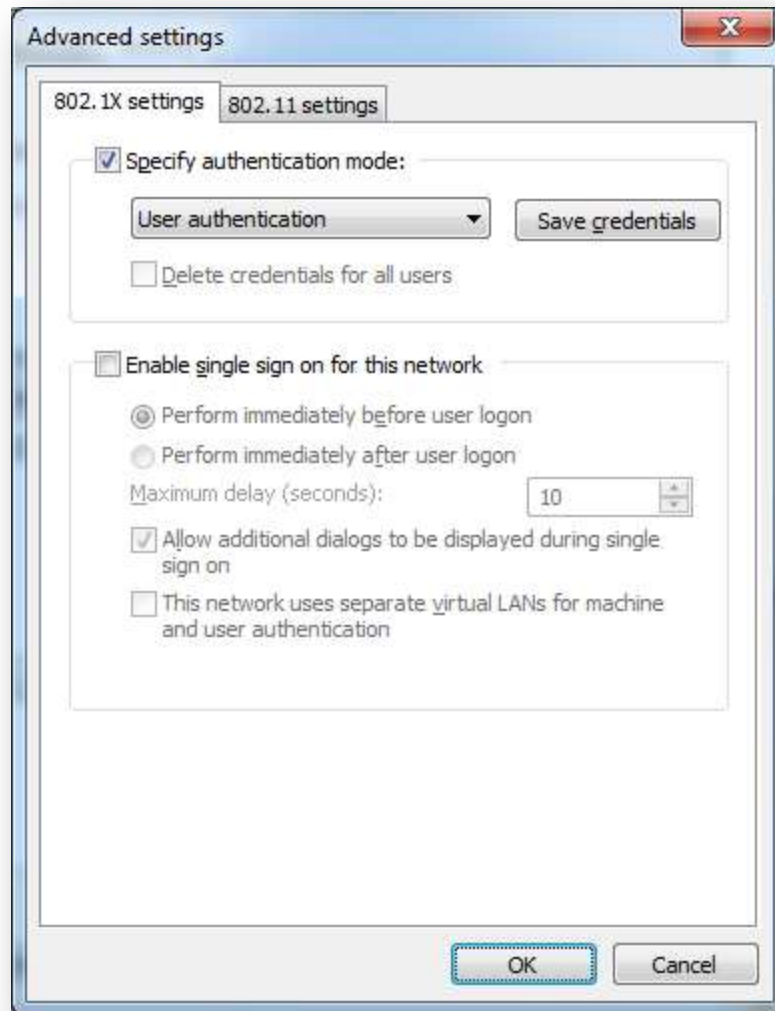
Uncheck the **Remember my credentials** box then click the **Advanced settings** button



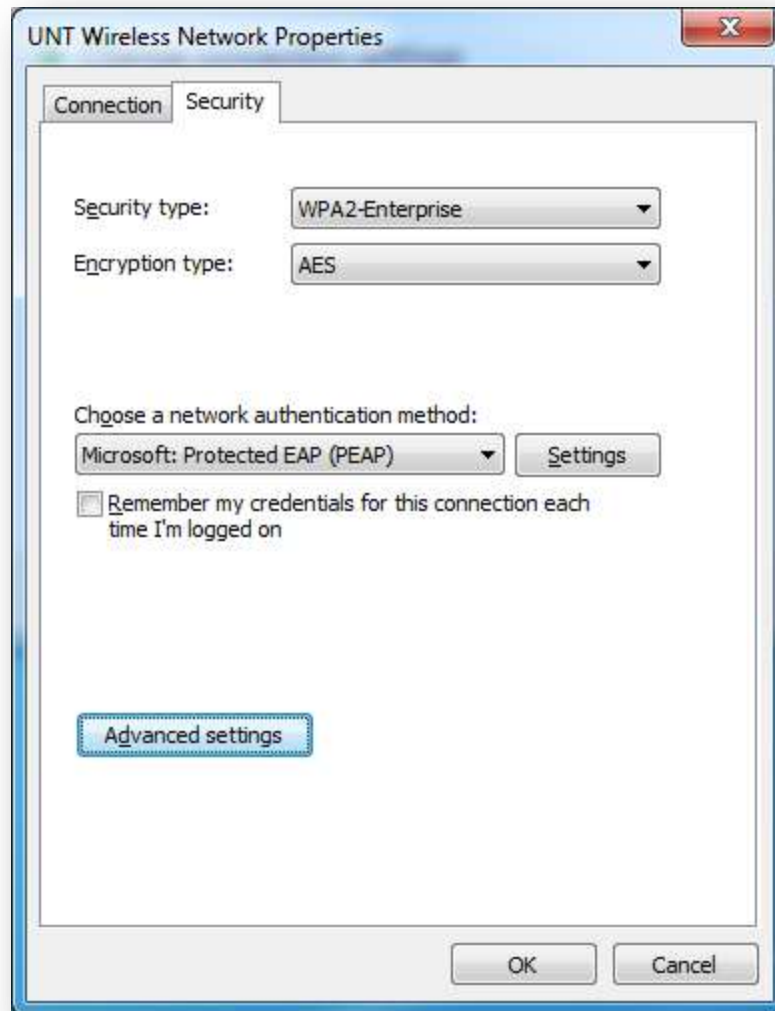
Check **Specify authentication mode** and select **User authentication** in the dropdown menu, then click **Save credentials**



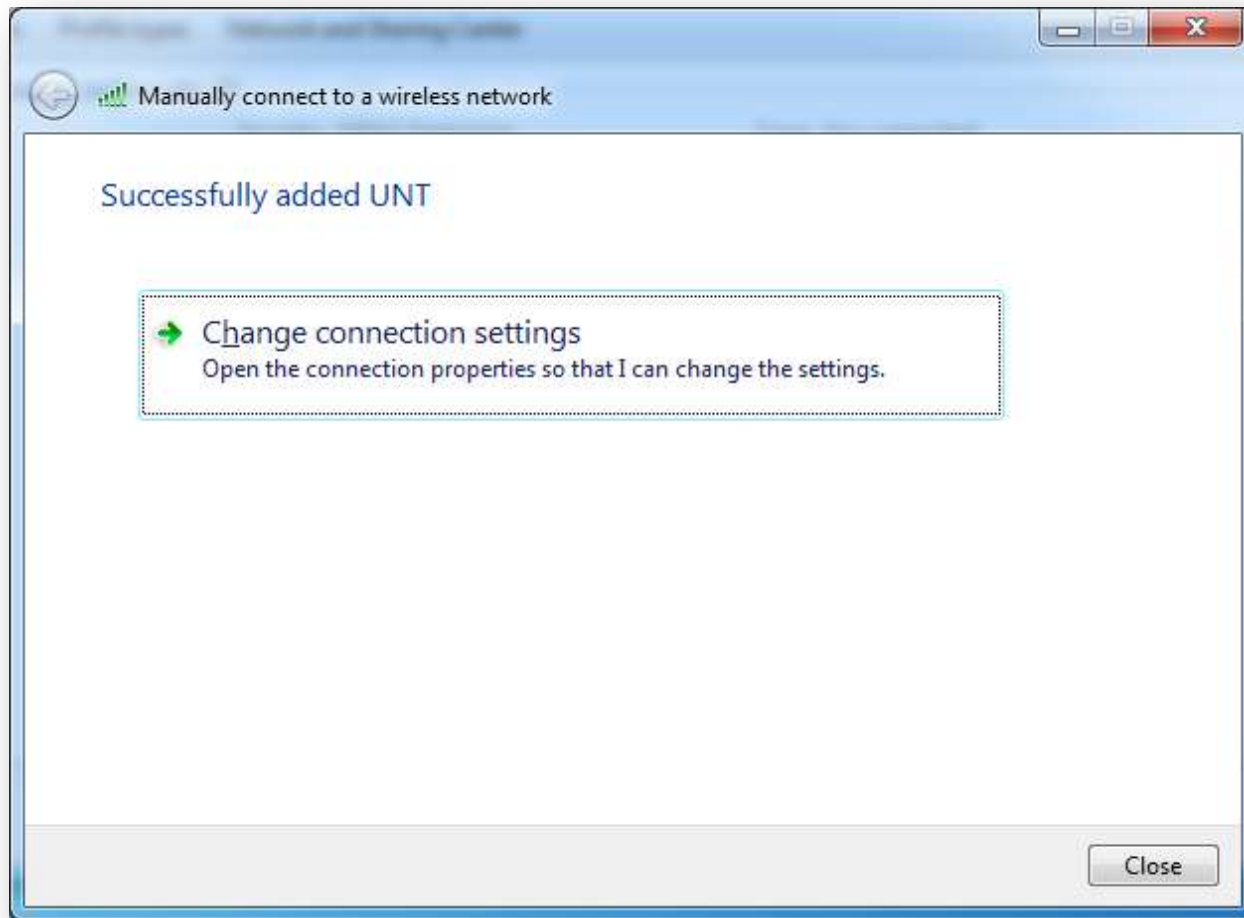
Enter your EUID and your password then click **OK**



Click **OK**



Click **OK**



Click **Close**

You are now configured for UNT!