

Emergency Evacuation Procedures

Support and Services Building

1500 IH-35, Denton TX, 76205

Severe Weather

In the event of severe weather, all building occupants should immediately seek shelter in the designated shelter-in-place area in the building. If unable to safely move to the designated shelter-in-place area, seek shelter in a windowless interior room or hallway on the lowest floor of the building.

All building occupants should take shelter in rooms 104, 105, 108A, and restrooms.

Bomb Threat/Fire

In the event of a bomb threat or fire in the building, all building occupants should immediately evacuate the building using the nearest exit. Once outside, proceed to the designated assembly area. If unable to safely move to the designated assembly area, contact on or more members of your department or unit to let them know you are safe and inform them of your whereabouts.

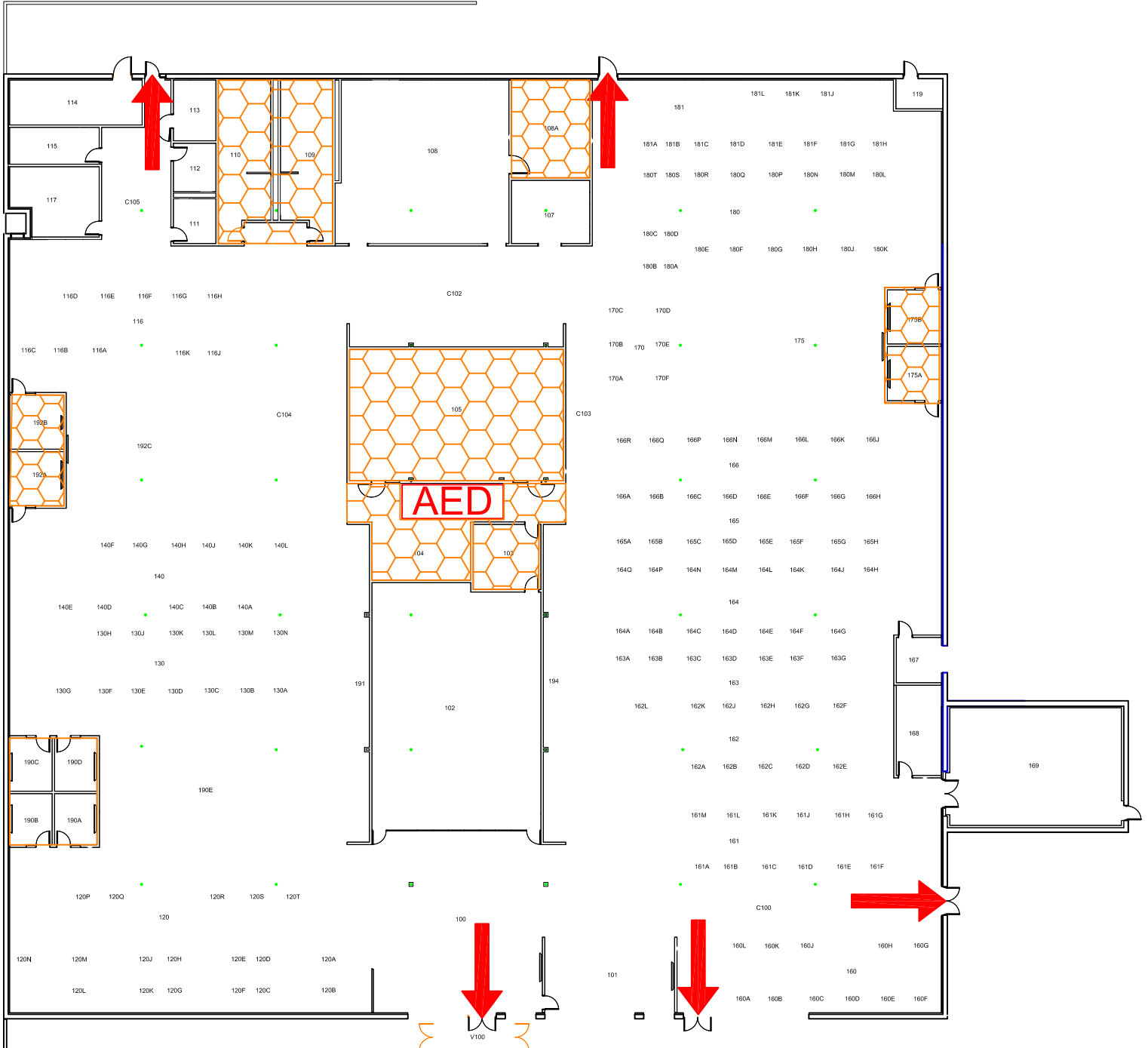
All building occupants should immediately evacuate the building and proceed to the west side of the building across Kendolph St.



SUPPORT AND SERVICES BUILDING






BLDG # 0314
01-2019

Exterior Gross Area
45359 sq ft



N
FIRST FLOOR PLAN

Safety Legend

-  Areas of Refuge
-  Tornado Shelter Areas
-  Exit/Evacuation Routes
- In case of fire, do not use elevator*
-  AED Automatic External Defibrillator
-  CHAIR Evacuation Chair

0' 10' 20' 30'
GRAPHIC SCALE