

Emergency Evacuation Procedures

Science Research Building

1504 W. Mulberry St. Denton, TX 76201

Severe Weather

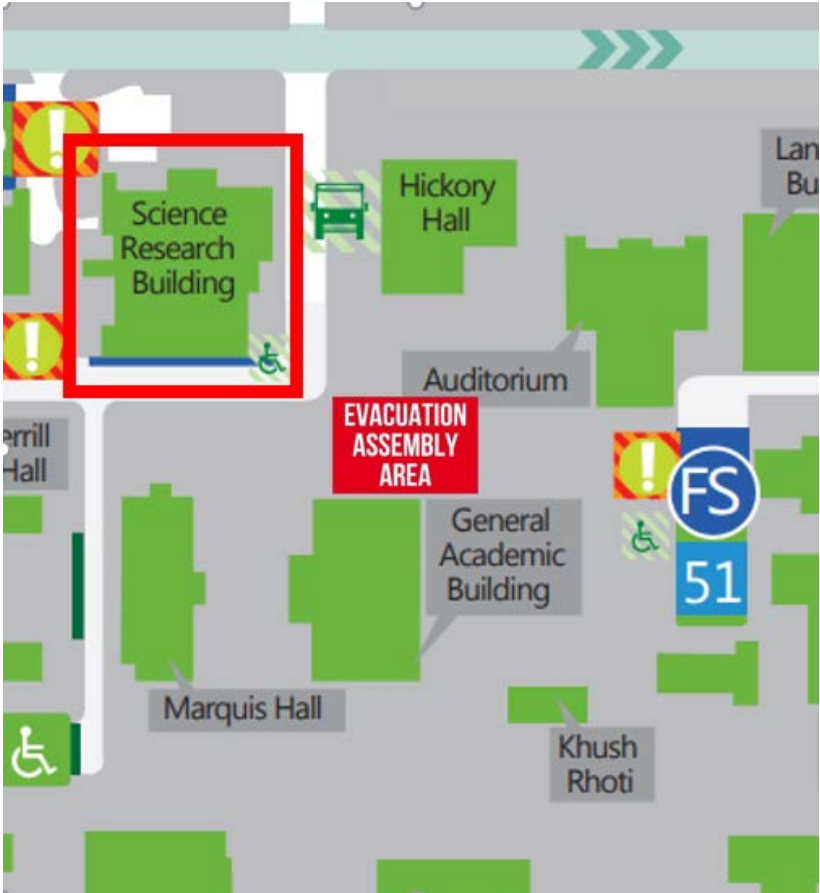
In the event of severe weather, all building occupants should immediately seek shelter in the designated shelter-in-place area in the building. If unable to safely move to the designated shelter-in-place area, seek shelter in a windowless interior room or hallway on the lowest floor of the building.

All building occupants should take shelter in the interior hallway on the 1st floor (lower level) of the building

Bomb Threat/Fire

In the event of a bomb threat or fire in the building, all building occupants should immediately evacuate the building using the nearest exit. Once outside, proceed to the designated assembly area. If unable to safely move to the designated assembly area, contact on or more members of your department or unit to let them know you are safe and inform them of your whereabouts.

All building occupants should immediately evacuate the building and proceed to the south side of the building, in the grassy area outside of GAB

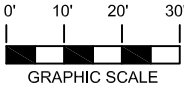
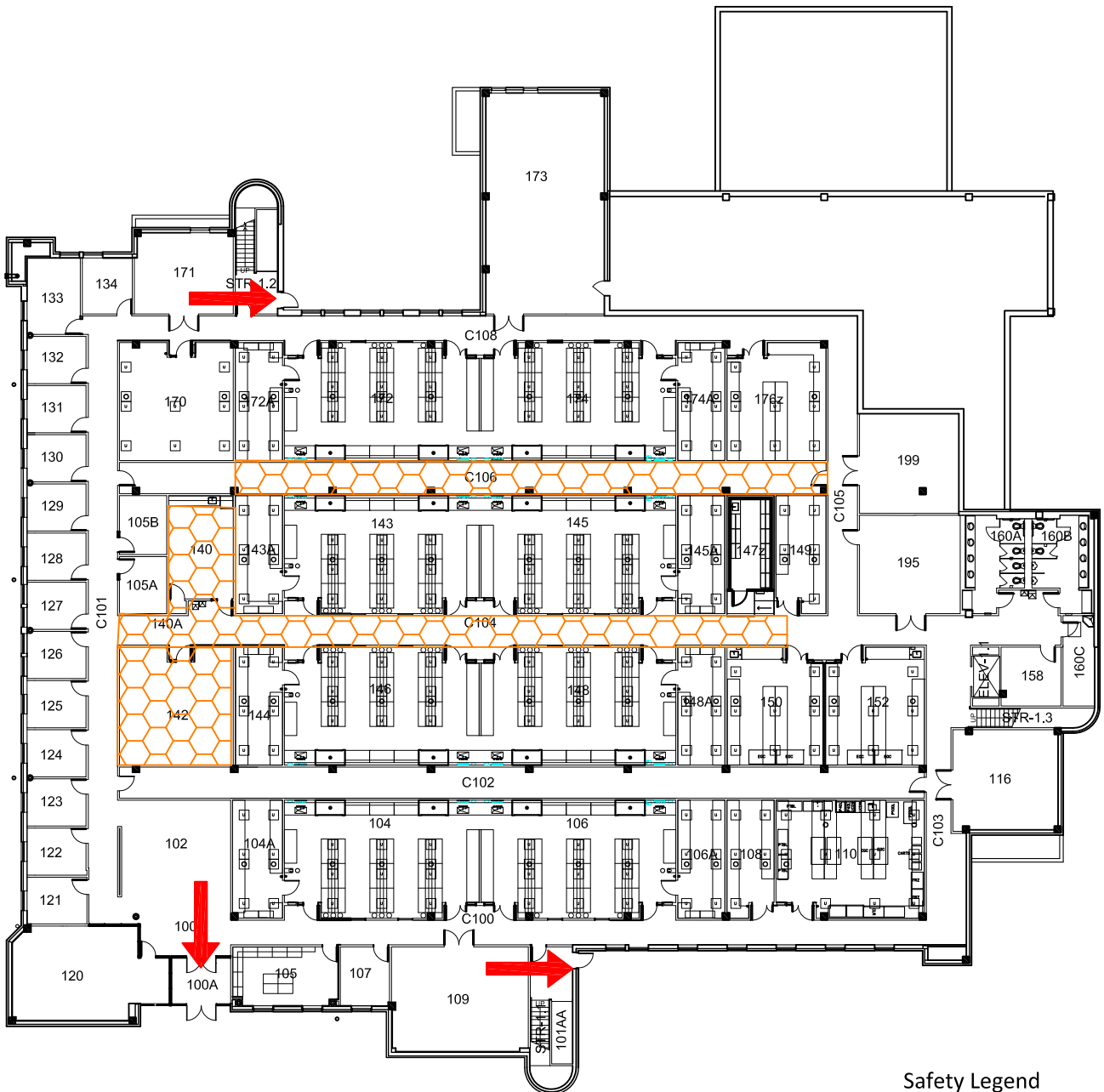


SCIENCE RESEARCH BLDG


BUILDING #0103


02-2018


Exterior Gross Area
30372





Safety Legend

 Areas of Refuge

 Tornado Shelter Areas

 Exit/Evacuation Routes
In case of fire, do not use elevator

 Automatic External Defibrillator

 Evacuation Chair

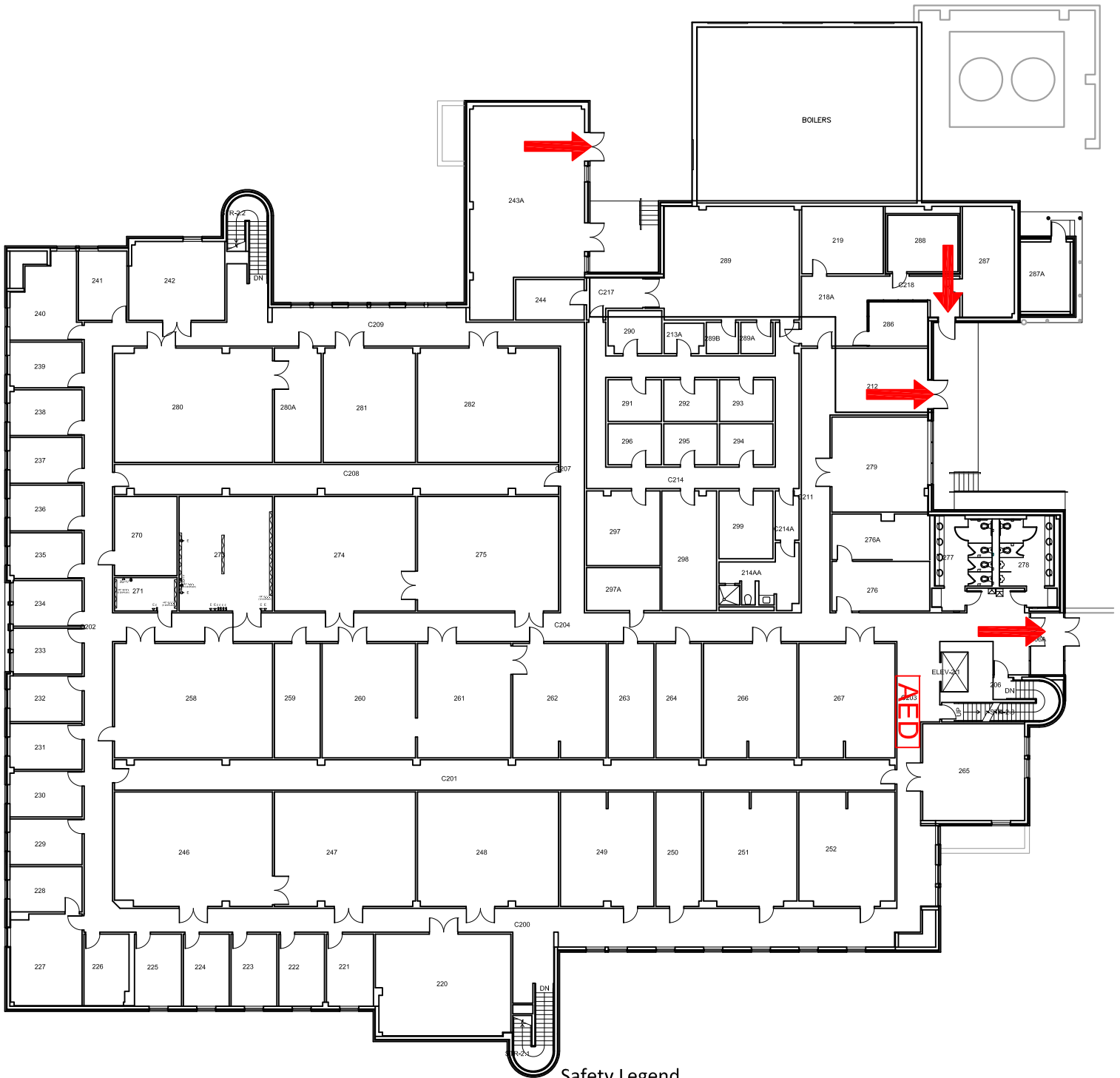


FIRST FLOOR PLAN


SCIENCE RESEARCH BLDG


BUILDING #0103

12-2016




Safety Legend


 Areas of Refuge

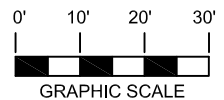
 Tornado Shelter Areas

 Exit/Evacuation Routes

In case of fire, do not use elevator

 AED Automatic External Defibrillator

 CHAIR Evacuation Chair



SECOND FLOOR PLAN