

# Emergency Evacuation Procedures

## Sage Hall

### Severe Weather

In the event of severe weather, all building occupants should immediately seek shelter in the designated shelter-in-place area in the building. If unable to safely move to the designated shelter-in-place area, seek shelter in a windowless interior room or hallway on the lowest floor of the building.

**All building occupants should take shelter in the interior hallway in the building and restrooms on floors 1 and 2.**

---

### Bomb Threat/Fire

In the event of a bomb threat or fire in the building, all building occupants should immediately evacuate the building using the nearest exit. Once outside, proceed to the designated assembly area. If unable to safely move to the designated assembly area, contact on or more members of your department or unit to let them know you are safe and inform them of your whereabouts.

**All building occupants should immediately evacuate the building and proceed to the south of building, close to the Union.**

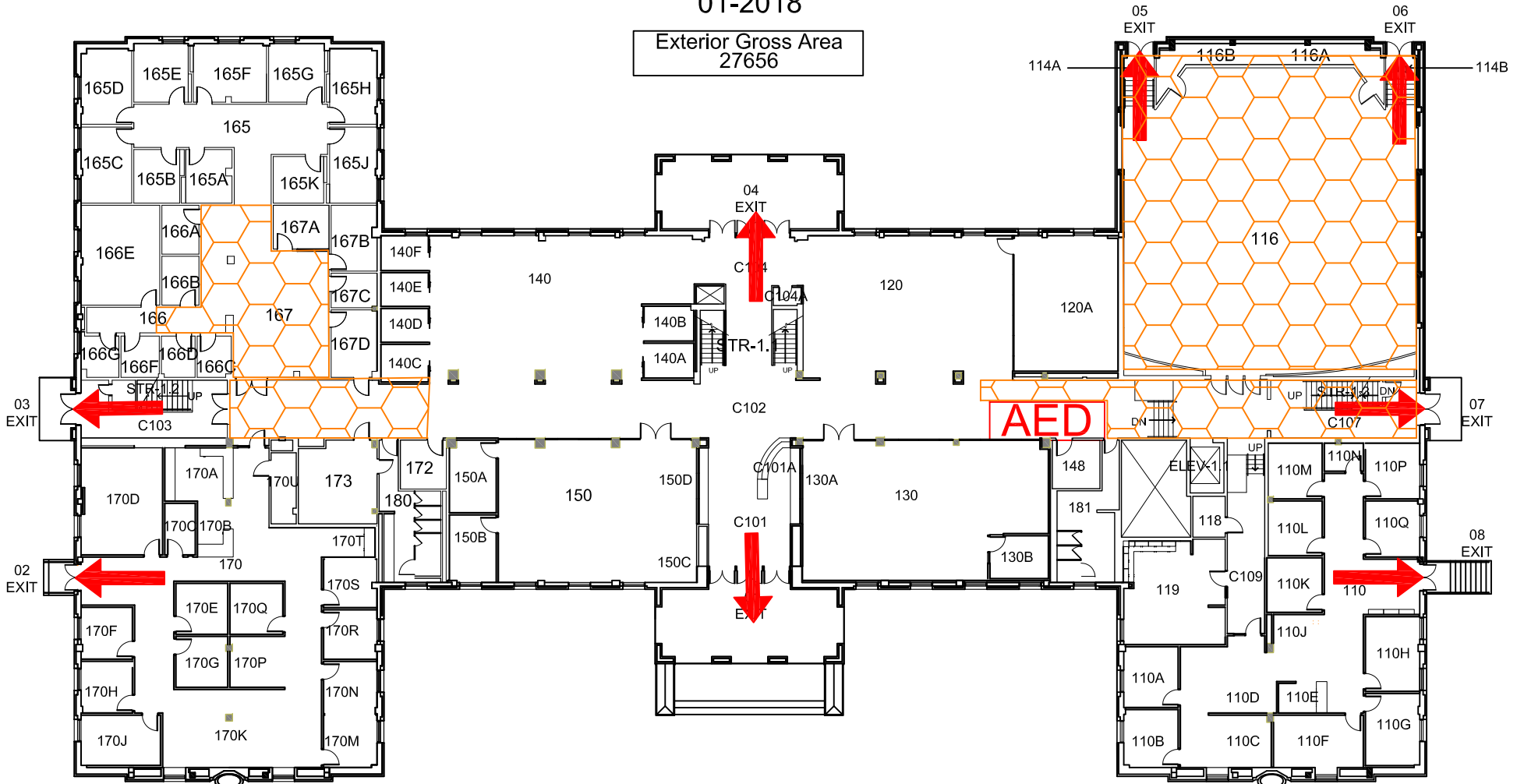


# SAGE HALL

BLDG #0104


01-2018


Exterior Gross Area  
27656




**FIRST FLOOR PLAN**


### Safety Legend


 Areas of Refuge

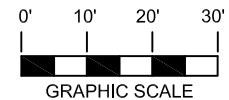
 Tornado Shelter Areas

 Exit/Evacuation Routes

*In case of fire, do not use elevator*

 AED Automatic External Defibrillator

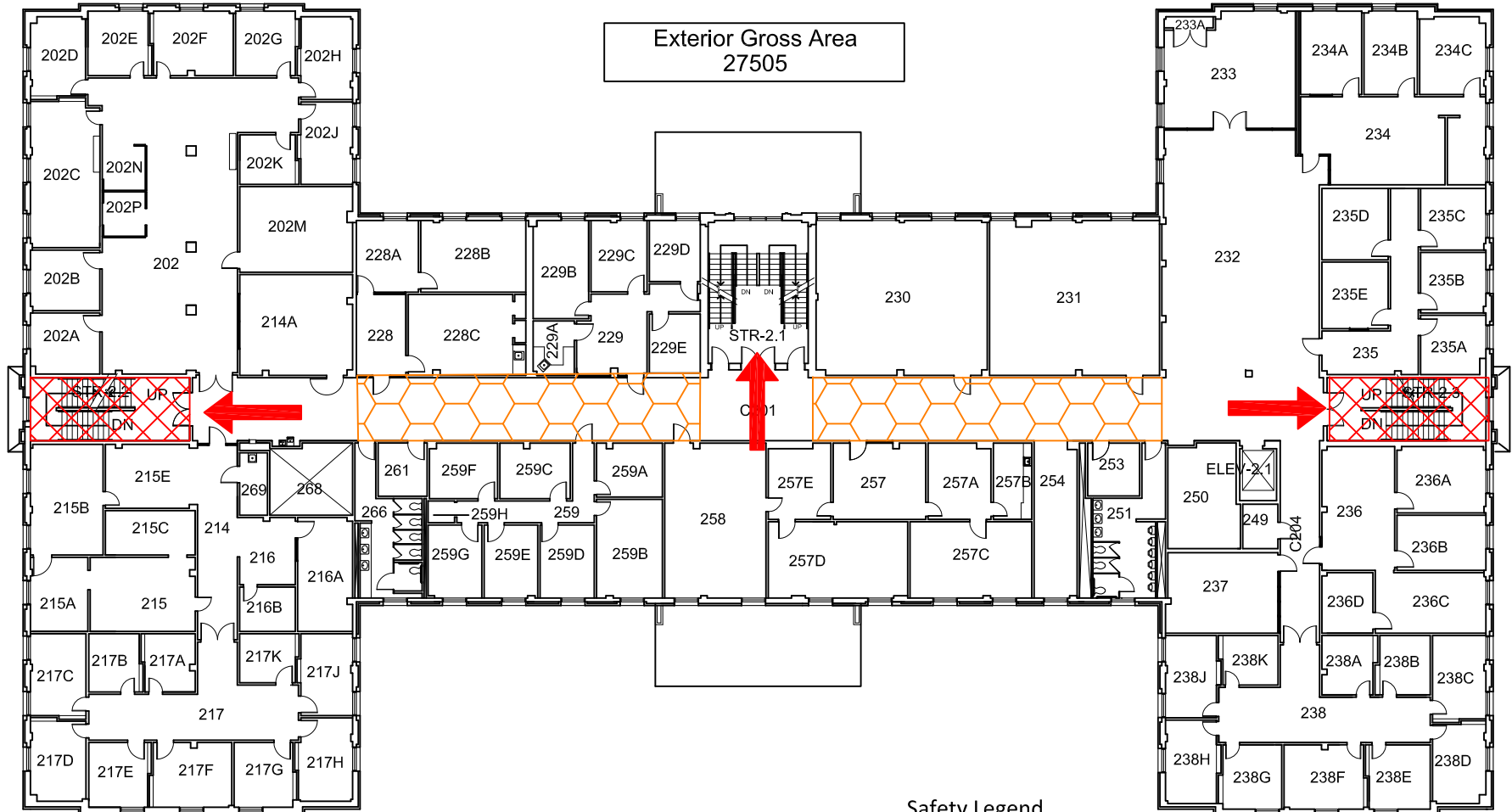
 CHAIR Evacuation Chair



# SAGE HALL

BLDG #0104

10-2013





Exterior Gross Area  
27505




## SECOND FLOOR PLAN


### Safety Legend


 Areas of Refuge

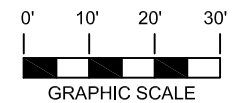
 Tornado Shelter Areas

 Exit/Evacuation Routes

*In case of fire, do not use elevator*

 AED Automatic External Defibrillator

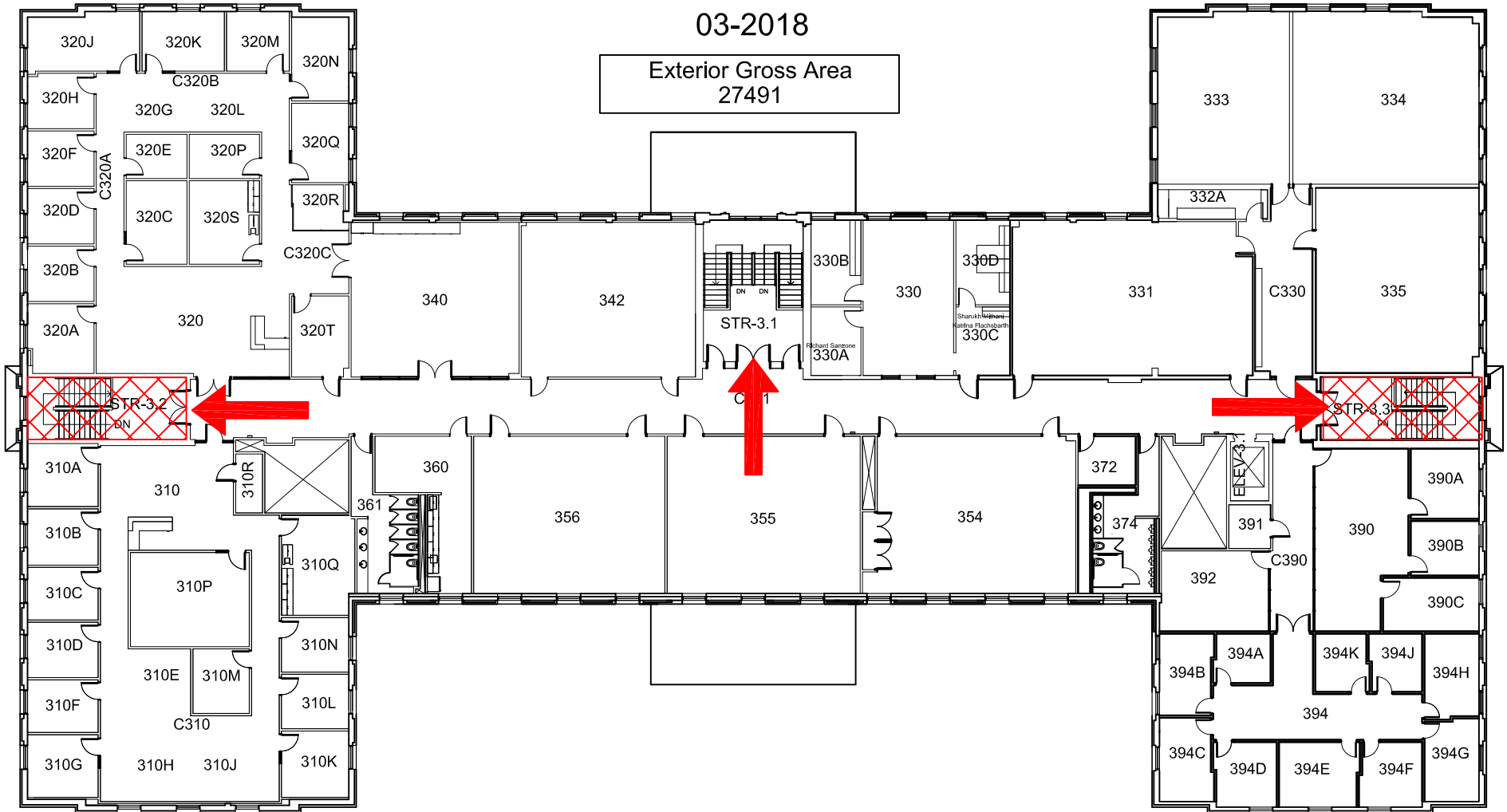
 CHAIR Evacuation Chair



# SAGE HALL


BLDG #0104  
03-2018


Exterior Gross Area  
27491



## THIRD FLOOR PLAN


### Safety Legend


 Areas of Refuge

 Tornado Shelter Areas

 Exit/Evacuation Routes

*In case of fire, do not use elevator*

 Automatic External Defibrillator

 Evacuation Chair

