

# Emergency Evacuation Procedures

## Mozart Square

### Page Navigation

- [Severe Weather](#)
  - [Bomb Threat/Fire](#)
  - [Building Evacuation Maps](#)
- 

### Severe Weather

In the event of severe weather, all building occupants should immediately seek shelter in the designated shelter-in-place area in the building. If unable to safely move to the designated shelter-in-place area, seek shelter in a windowless interior room or hallway on the lowest floor of the building.

**Residents living on the 1st floor should take shelter inside their bathrooms.**

**Residents living on the 2nd and 3rd floor should take shelter in the 1st floor hallways away from any windows.**

---

### Bomb Threat/Fire

In the event of a bomb threat or fire in the building, all building occupants should immediately evacuate the building using the nearest exit. Once outside, proceed to the designated assembly area. If unable to safely move to the designated assembly area, contact your RA to let them know you are safe and inform them of your whereabouts.

Persons with mobility impairments who are unable to safely exit the building should move to a designated area of refuge and await assistance from emergency responders.

**Residents should congregate in the southeast corner of parking lot 29.**

---

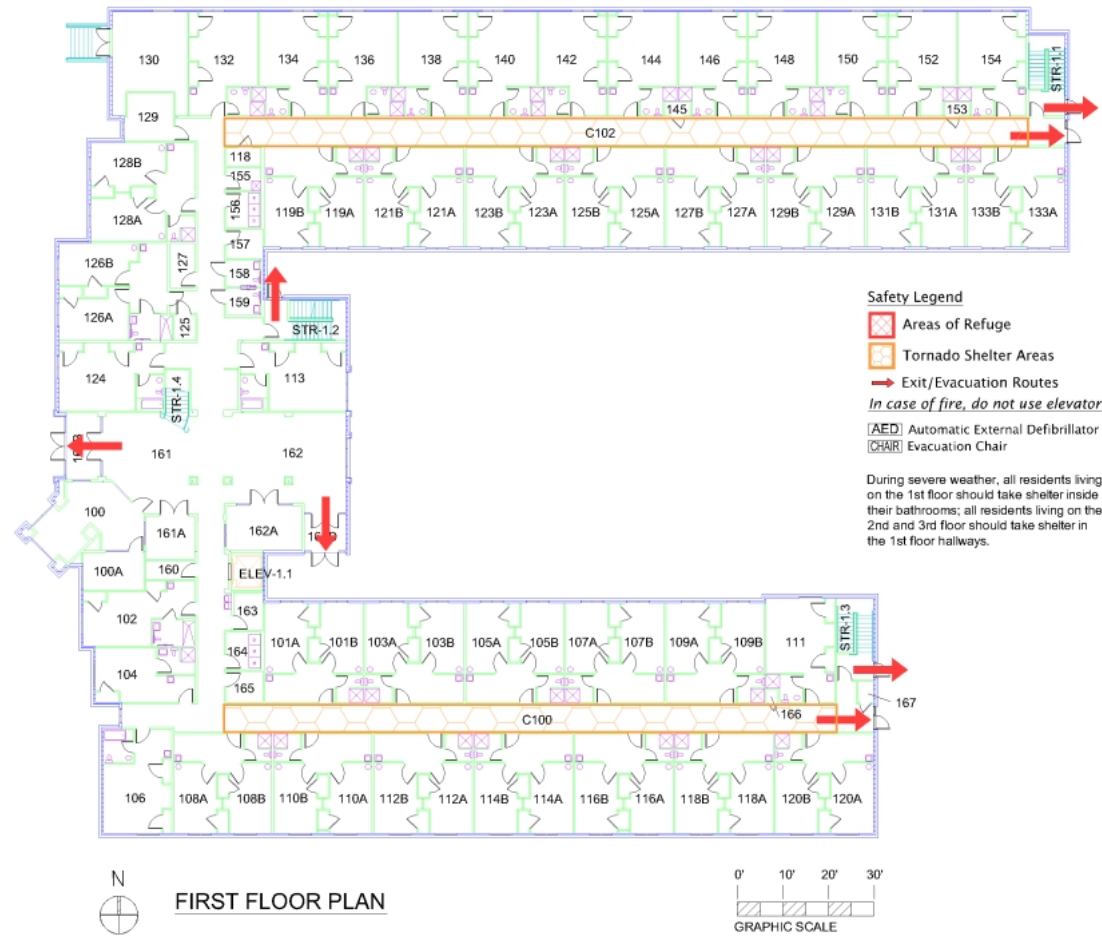
### Building Evacuation Maps

[Print Full Size Map](#)

# MOZART SQUARE HALL

BUILDING #0186  
03-2009

Exterior Gross Area  
25043

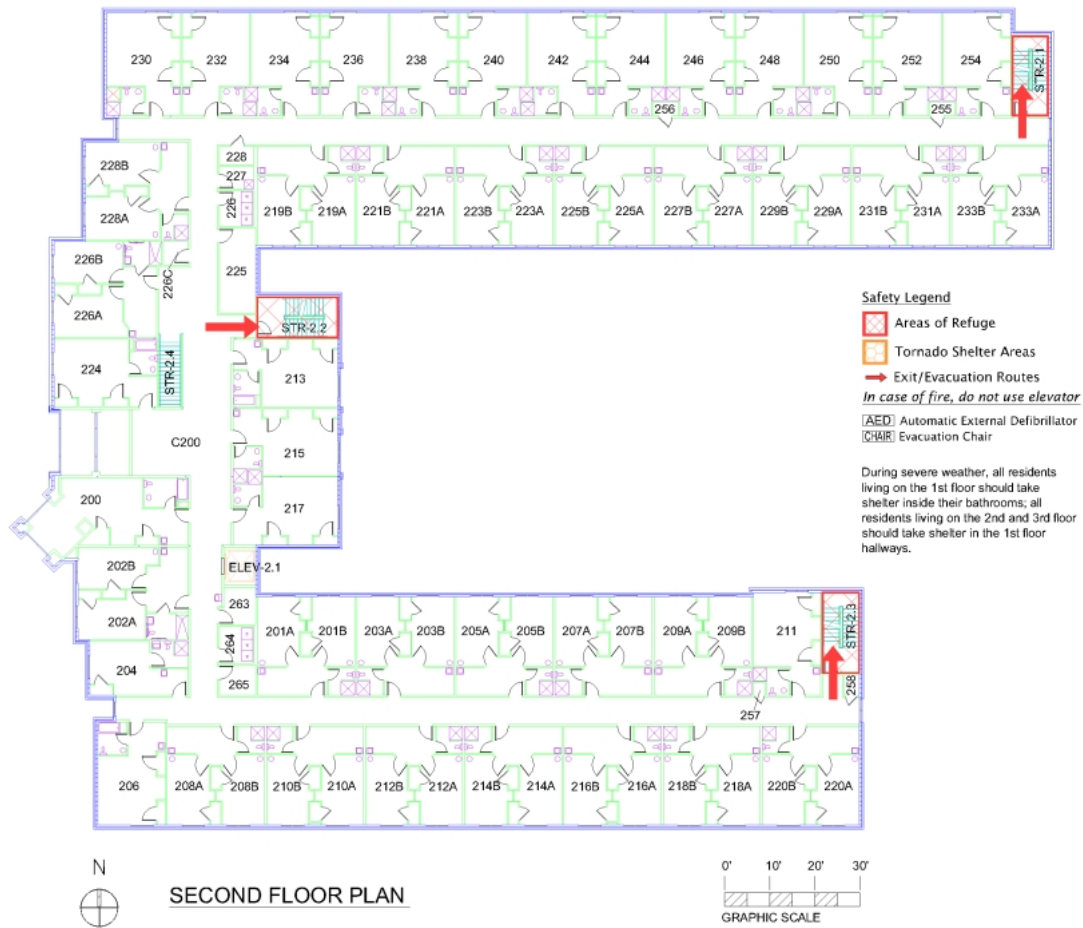


[Print Full Size Map](#)

# MOZART SQUARE HALL

BUILDING #0186  
03-2009

Exterior Gross Area  
24784

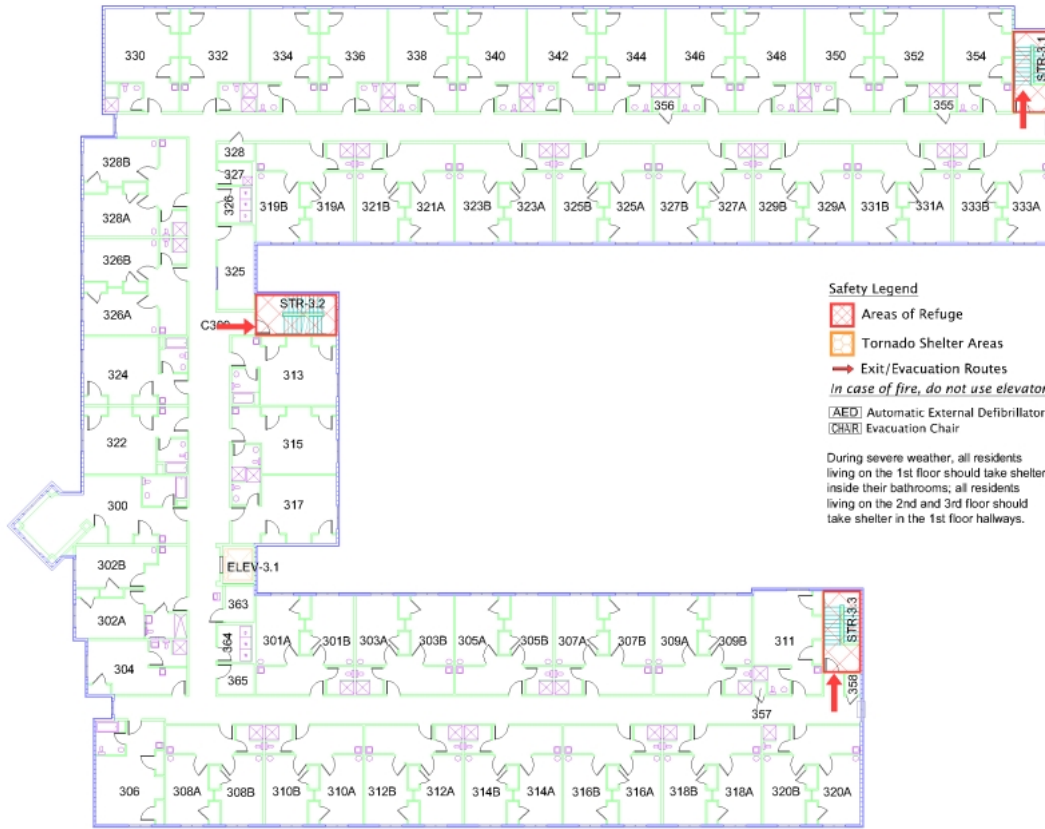


[Print Full Size Map](#)

# MOZART SQUARE HALL

BUILDING #0186  
03-2009

Exterior Gross Area  
24294



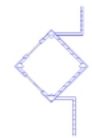
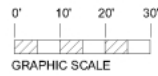
### Safety Legend

- Areas of Refuge
- Tornado Shelter Areas
- Exit/Evacuation Routes
- In case of fire, do not use elevator*
- AED Automatic External Defibrillator
- Evacuation Chair

During severe weather, all residents living on the 1st floor should take shelter inside their bathrooms; all residents living on the 2nd and 3rd floor should take shelter in the 1st floor hallways.



THIRD FLOOR PLAN



UPPER TOWER PLAN