

Emergency Evacuation Procedures

Kappa Kappa Gamma (House E)

Page Navigation

- [Severe Weather](#)
 - [Bomb Threat/Fire](#)
 - [Building Evacuation Maps](#)
-

Severe Weather

In the event of severe weather, all building occupants should immediately seek shelter in the designated shelter-in-place area in the building. If unable to safely move to the designated shelter-in-place area, seek shelter in a windowless interior room or hallway on the lowest floor of the building.

All building occupants should seek shelter on the first floor in the south end of the center hallway.

Bomb Threat/Fire

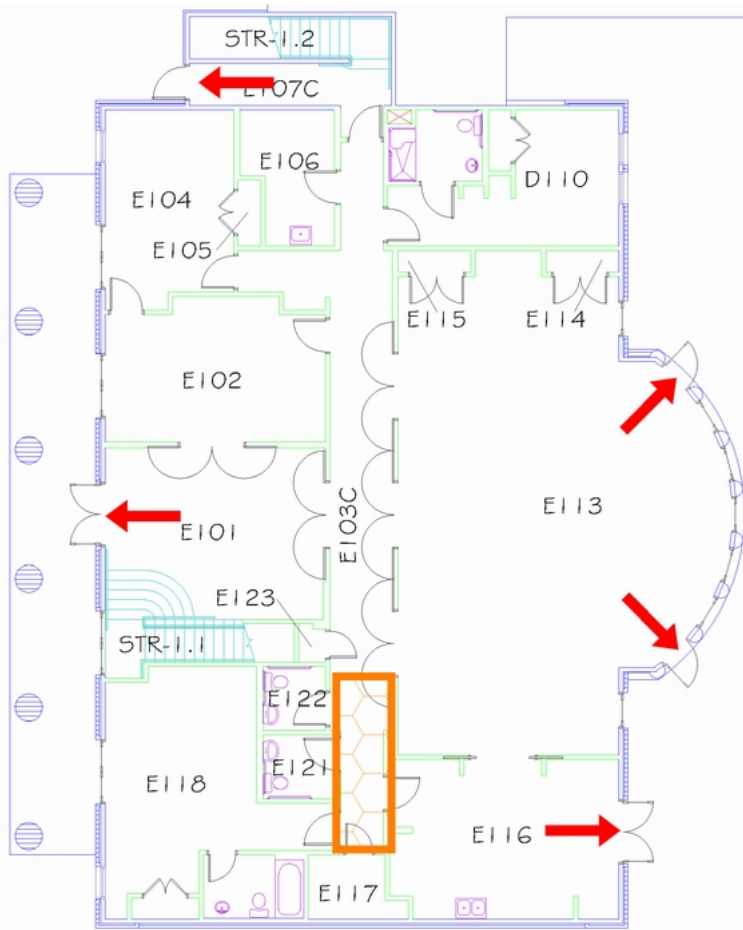
In the event of a bomb threat or fire in the building, all building occupants should immediately evacuate the building using the nearest exit. Once outside, proceed to the designated assembly area. If unable to safely move to the designated assembly area, contact your RA to let them know you are safe and inform them of your whereabouts.

Persons with mobility impairments who are unable to safely exit the building should move to a designated area of refuge and await assistance from emergency responders.




All building occupants should proceed to the west end of parking lot 39 west of the building.

Building Evacuation Maps



[Print Full Size Map](#)



Safety Legend

-  Areas of Refuge
-  Tornado Shelter Areas
-  Exit/Evacuation Routes

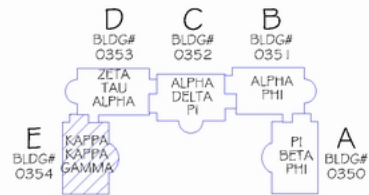
In case of fire, do not use elevator

-  AED Automatic External Defibrillator
-  CHAIR Evacuation Chair

N

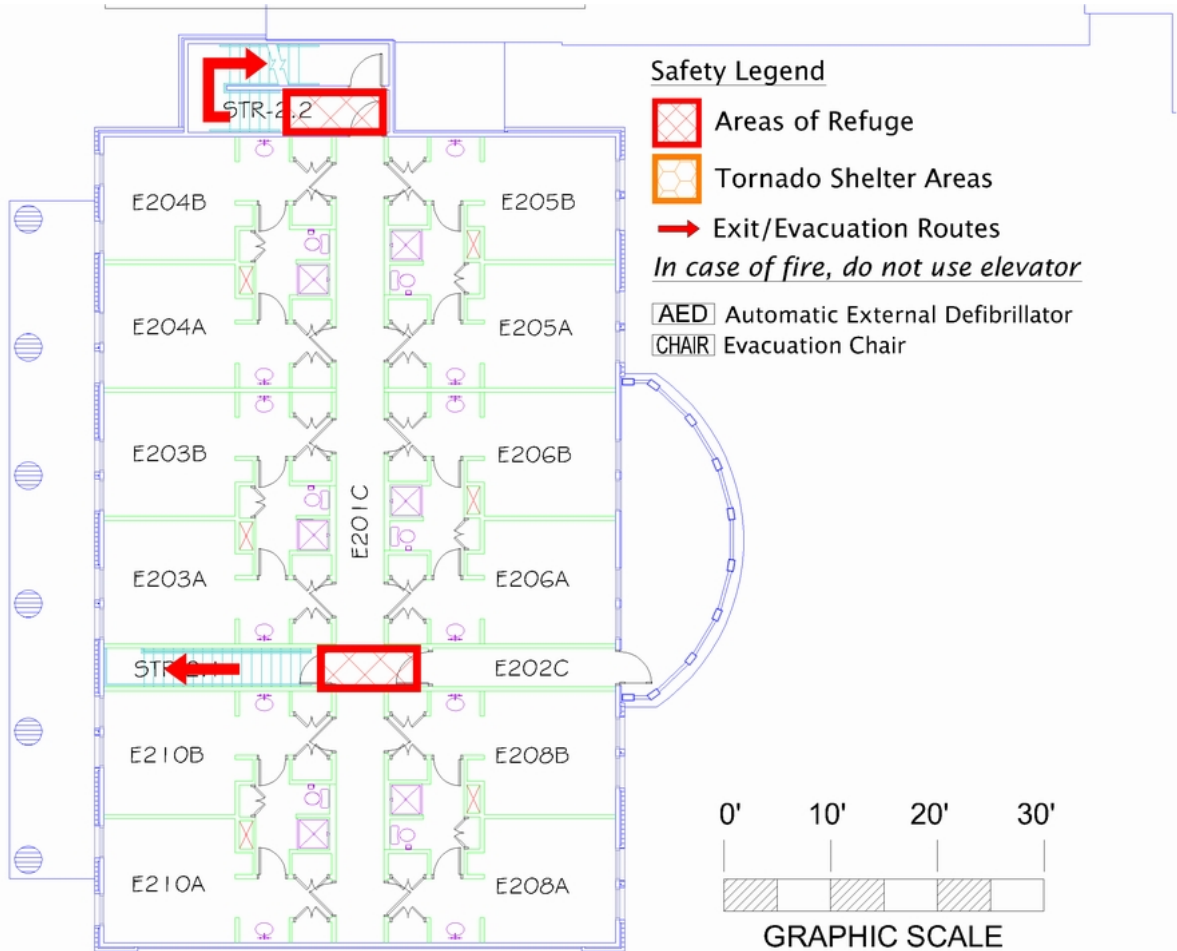


FIRST FLOOR PLAN



KEY PLAN

[Print Full Size Map](#)



Safety Legend

Areas of Refuge

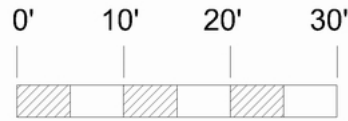
Tornado Shelter Areas

Exit/Evacuation Routes

In case of fire, do not use elevator

AED Automatic External Defibrillator

CHAIR Evacuation Chair

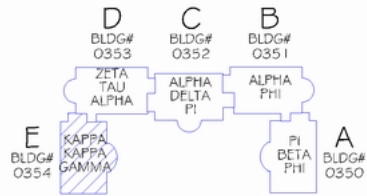


GRAPHIC SCALE

N



SECOND FLOOR PLAN



KEY PLAN