

Emergency Evacuation Procedures

Alpha Phi (House B)

Severe Weather

In the event of severe weather, all building occupants should immediately seek shelter in the designated shelter in place area in the building. If unable to safely move to the designated shelter in place area, seek shelter in a windowless interior room or hallway on the lowest floor of the building.

All building occupants should seek shelter on the first floor in the hallway on the west side fo the building

Bomb Threat / Fire

In the event of a bomb threat or fire in the building, all building occupants should immediately evacuate the building using the nearest exit. Once outside, proceed to the designated assembly area. If unable to safely move to the designated assembly area, contact one or more members of your department or unit to let them know you are safe and inform them of your whereabouts.






Persons with mobility impairments who are unable to safely exit the building should move to a designated area of refuge and await assistance from responders.

All building occupants will proceed to the west end of parking lot 39, west of the building.

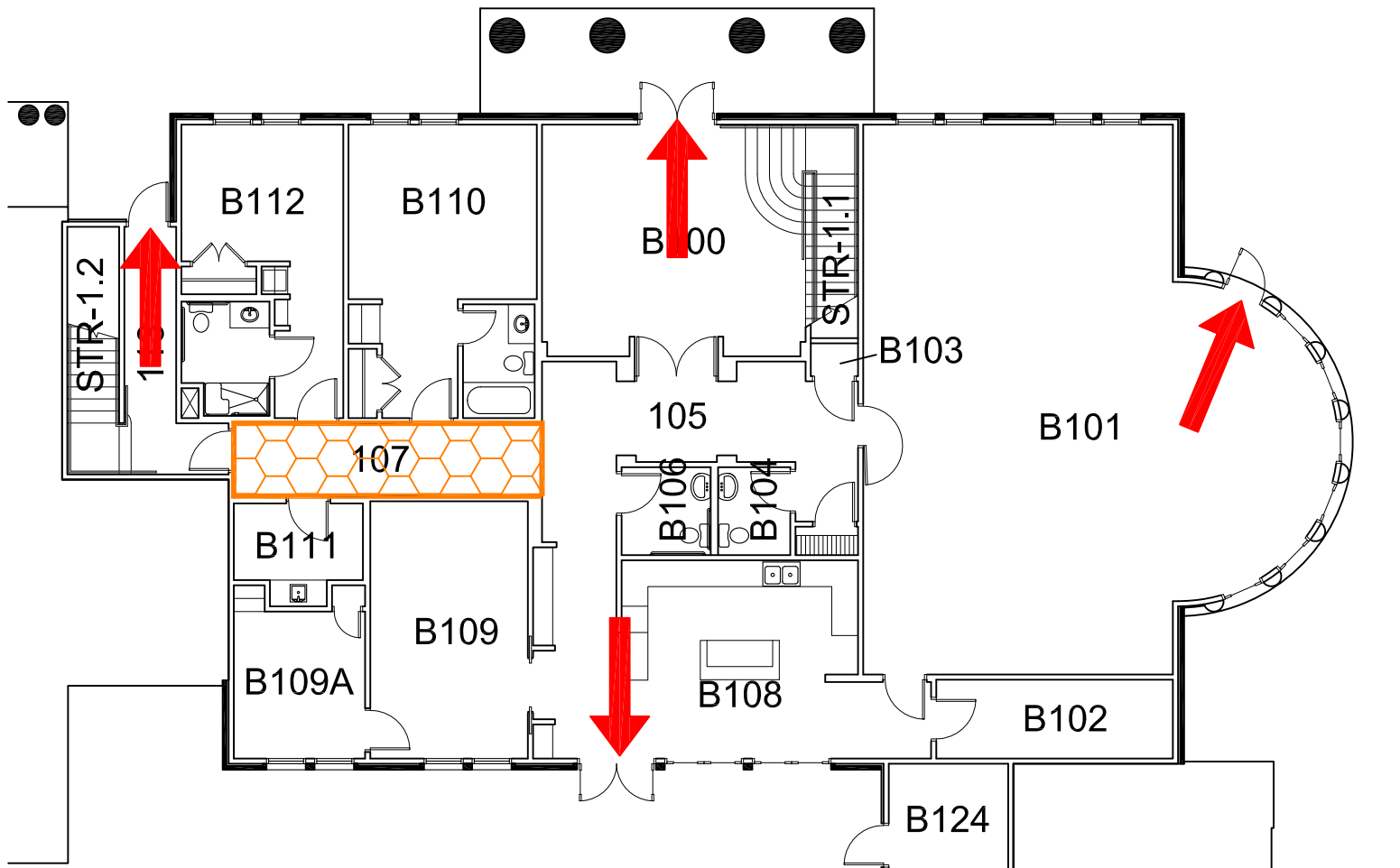
SORORITY HOUSE B

BUILDING # 0351
08-2013

Safety Legend

-  Areas of Refuge
-  Tornado Shelter Areas
-  Exit/Evacuation Routes
In case of fire, do not use elevator
-  AED Automatic External Defibrillator
-  CHAIR Evacuation Chair

Exterior Gross Area
4270



N



FIRST FLOOR PLAN

0' 10' 20' 30'



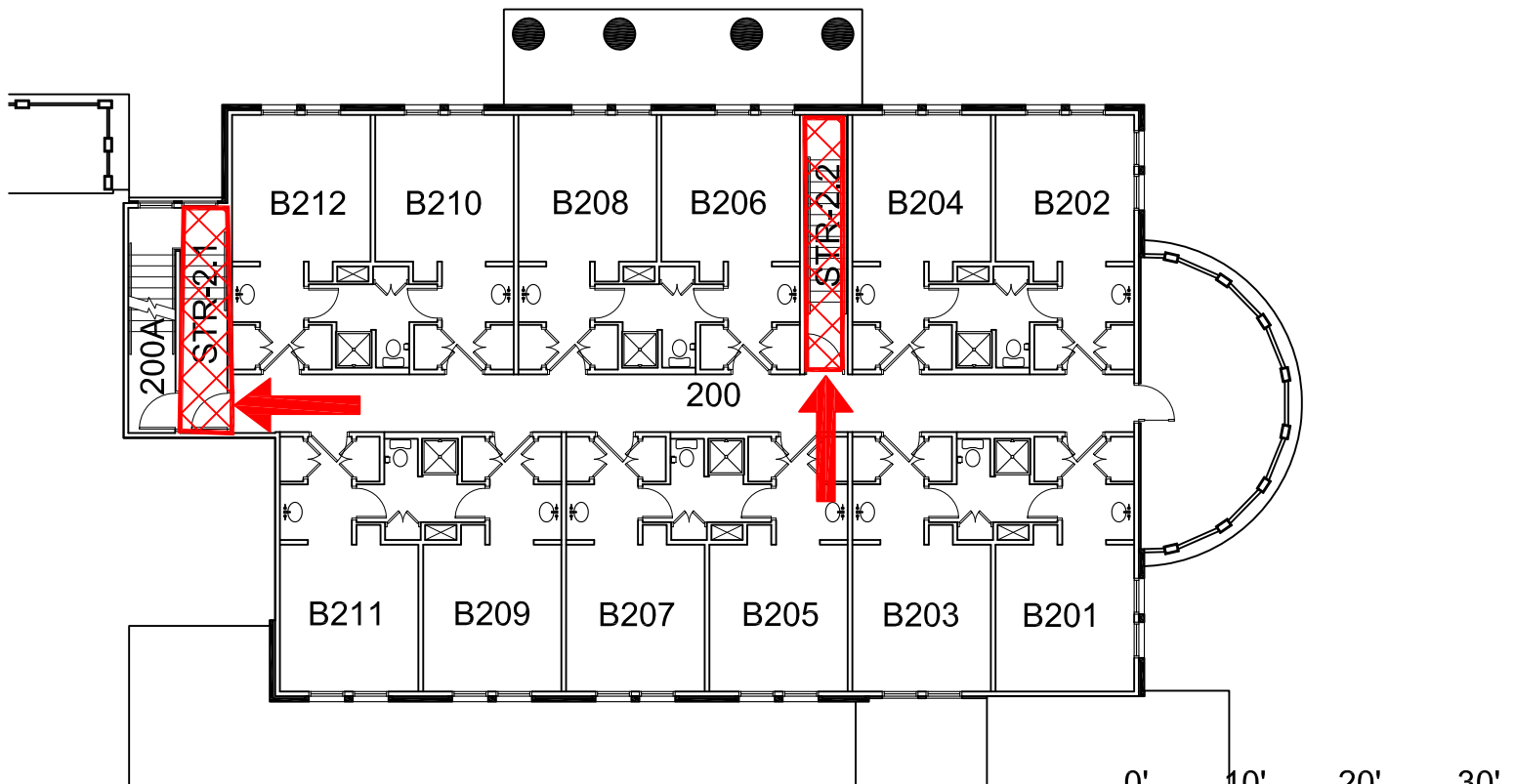
GRAPHIC SCALE

SORORITY HOUSE B

BUILDING # 0351



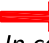
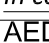

08-2013

Exterior Gross Area
3921



SECOND FLOOR PLAN

Safety Legend

-  Areas of Refuge
-  Tornado Shelter Areas
-  Exit/Evacuation Routes
In case of fire, do not use elevator
-  AED Automatic External Defibrillator
-  CHAIR Evacuation Chair

A