

Emergency Evacuation Procedures

Gateway Center

Severe Weather

In the event of severe weather, all building occupants should immediately seek shelter in the designated shelter-in-place area in the building. If unable to safely move to the designated shelter-in-place area, seek shelter in a windowless interior room or hallway on the lowest floor of the building.

All building occupants should take shelter in the interior, windowless hallway on the north side of the Ground floor, and on the first floor in the elevator area.

Bomb Threat/Fire

In the event of a bomb threat or fire in the building, all building occupants should immediately evacuate the building using the nearest exit. Once outside, proceed to the designated assembly area. If unable to safely move to the designated assembly area, contact one or more members of your department or unit to let them know you are safe and inform them of your whereabouts.

Persons with mobility impairments who are unable to safely exit the building should move to a designated area of refuge and await assistance from emergency responders.

All building occupants should immediately evacuate the building and proceed to the grass lawn across the Gateway Center drive at the corner of North Texas Blvd and Eagle Drive.

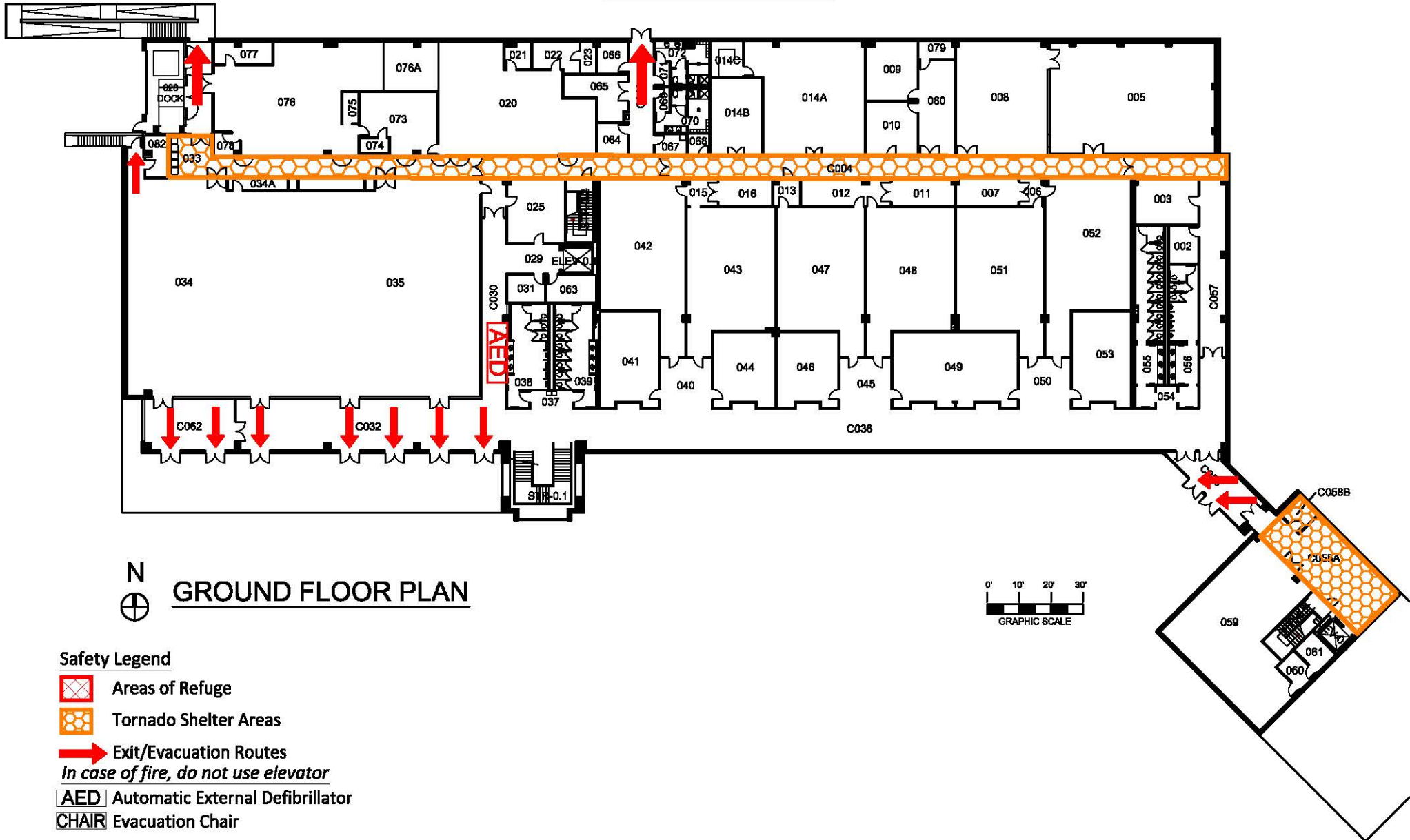


GATEWAY CENTER

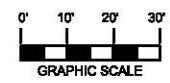
BLDG # 0161






10-2011

Exterior Gross Area
48191



N
⊕ GROUND FLOOR PLAN

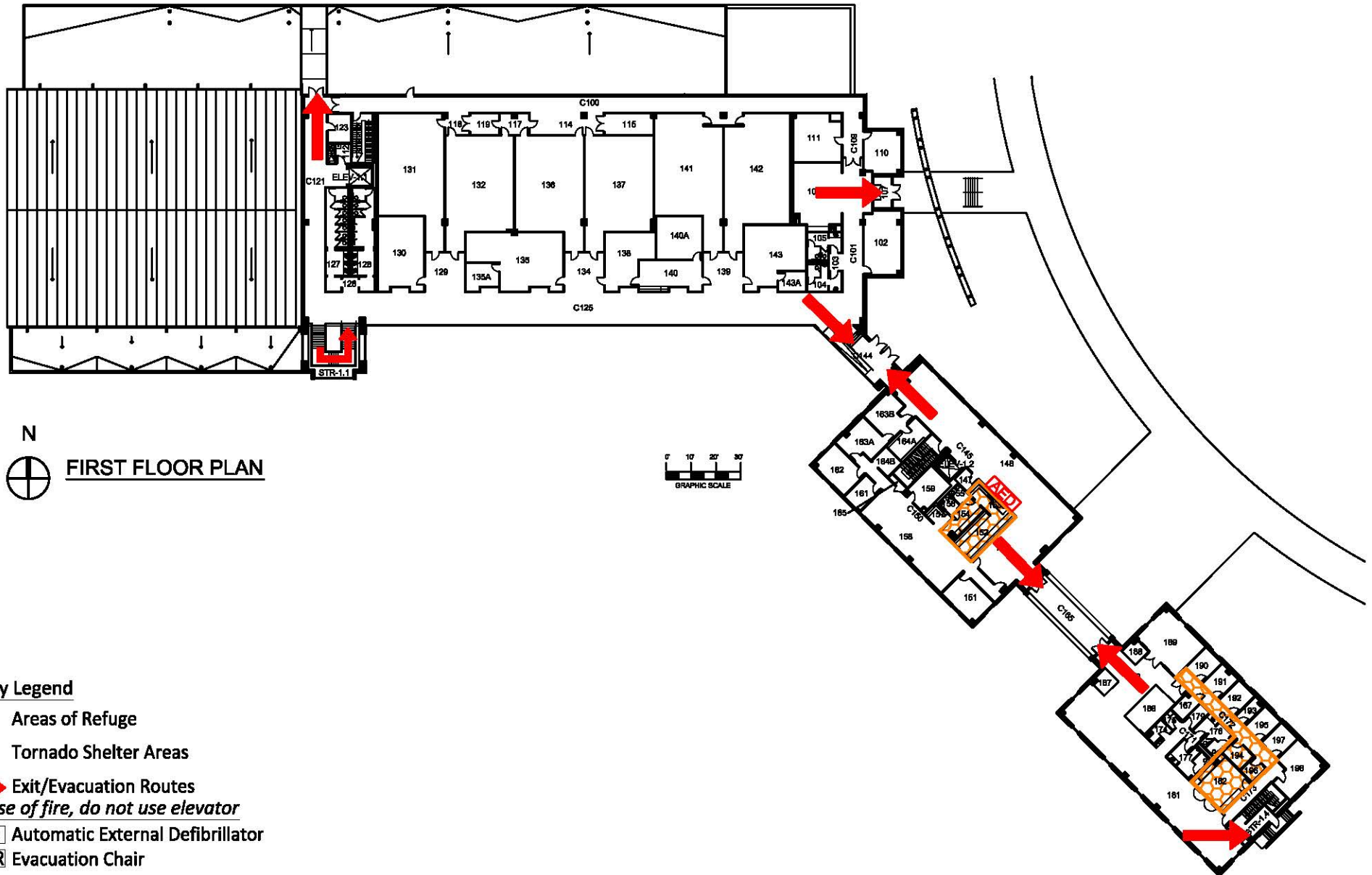


- Safety Legend**
-  Areas of Refuge
 -  Tornado Shelter Areas
 -  Exit/Evacuation Routes
 - In case of fire, do not use elevator*
 -  AED Automatic External Defibrillator
 -  CHAIR Evacuation Chair

GATEWAY CENTER

BLDG # 0161
08-2012

Exterior Gross Area
35242



Safety Legend

 Areas of Refuge

 Tornado Shelter Areas

 Exit/Evacuation Routes

In case of fire, do not use elevator

 Automatic External Defibrillator






 Evacuation Chair

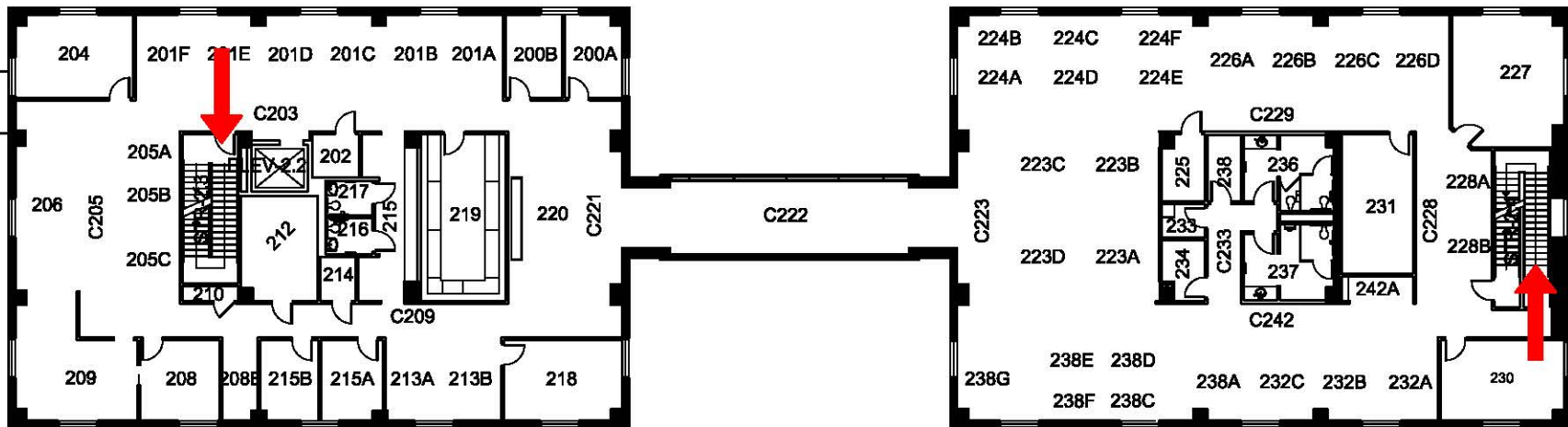
GATEWAY CENTER

BLDG # 0161
10-2012

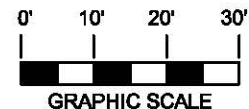
Exterior Gross Area
12198

Safety Legend

-  Areas of Refuge
-  Tornado Shelter Areas
-  Exit/Evacuation Routes
In case of fire, do not use elevator
-  AED Automatic External Defibrillator
-  CHAIR Evacuation Chair



 **SECOND FLOOR PLAN**

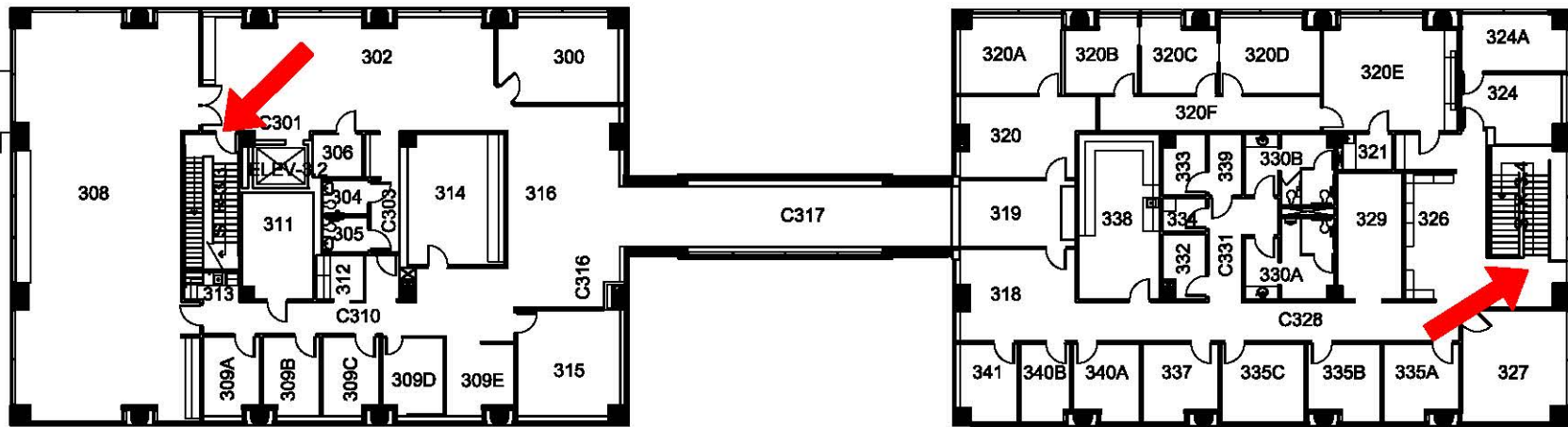


GATEWAY CENTER

BLDG # 0161

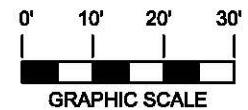
01-2012

Exterior Gross Area
12189



N
⊕

THIRD FLOOR PLAN



Safety Legend

Areas of Refuge

Tornado Shelter Areas

Exit/Evacuation Routes

In case of fire, do not use elevator

AED Automatic External Defibrillator

CHAIR Evacuation Chair