

# Emergency Evacuation Procedures

## Frisco Campus – Inspire Park

6170 Research Rd.  
Frisco , TX 75034

### Severe Weather

In the event of severe weather, all building occupants should immediately seek shelter in the designated shelter-in-place area in the building. If unable to safely move to the designated shelter-in-place area, seek shelter in a windowless interior room or hallway on the lowest floor of the building.

**All building occupants should take shelter in the interior hallway on the first floor in the building and restrooms**

---






### Bomb Threat/Fire

In the event of a bomb threat or fire in the building, all building occupants should immediately evacuate the building using the nearest exit. Once outside, proceed to the designated assembly area. If unable to safely move to the designated assembly area, contact on or more members of your department or unit to let them know you are safe and inform them of your whereabouts.

**All building occupants should immediately evacuate the building and proceed to the North West side of the parking lot.**



Safety Legend

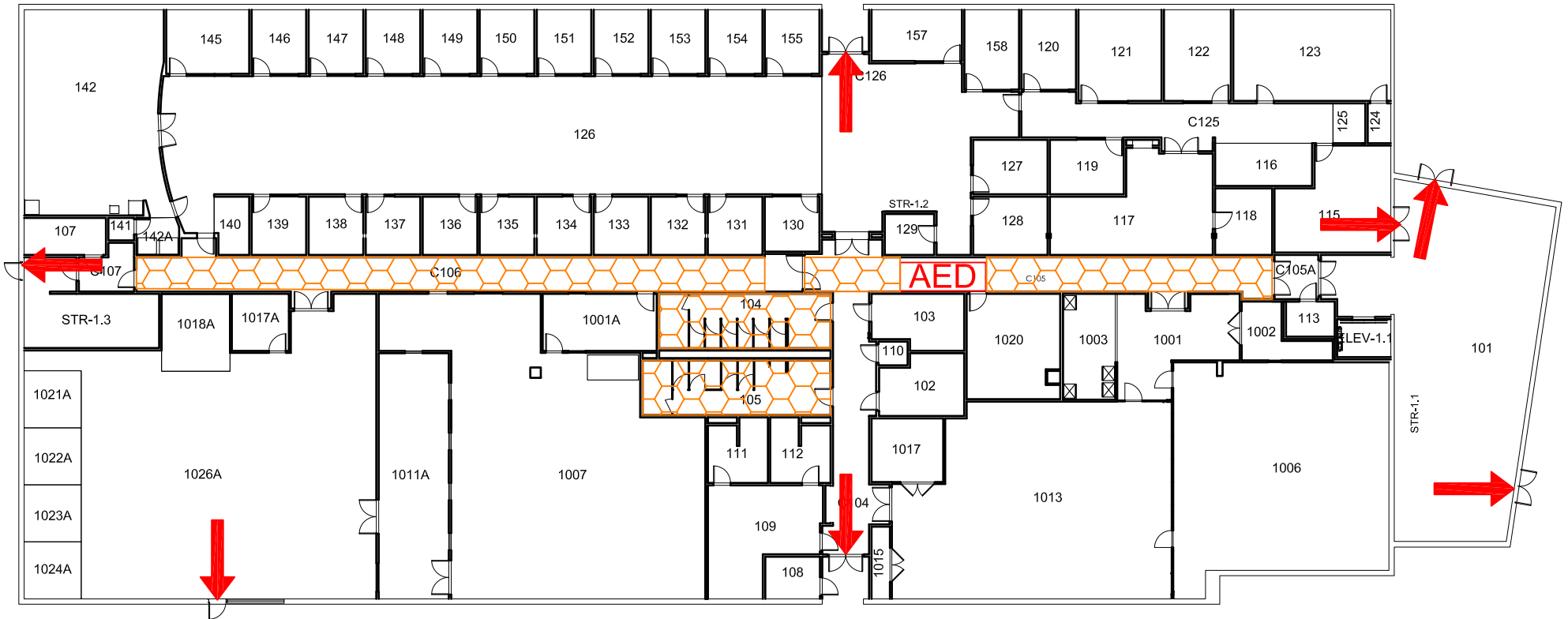
-  Areas of Refuge
-  Tornado Shelter Areas
-  Exit/Evacuation Routes  
*In case of fire, do not use elevator*
-  Automatic External Defibrillator
-  Evacuation Chair

# INSPIRE PARK

## BLDG # 5001


### 08-2018


Exterior Gross Area  
26666




FIRST FLOOR PLAN


Safety Legend

 Areas of Refuge

 Tornado Shelter Areas

 Exit/Evacuation Routes  
*In case of fire, do not use elevator*

 Automatic External Defibrillator

 Evacuation Chair

# INSPIRE PARK

## BLDG #0101

09-2018



N  SECOND FLOOR PLAN