

Emergency Evacuation Procedures

Waranch Tennis Complex

1499 S. Bonnie brae St., Denton, TX 76207

Severe Weather

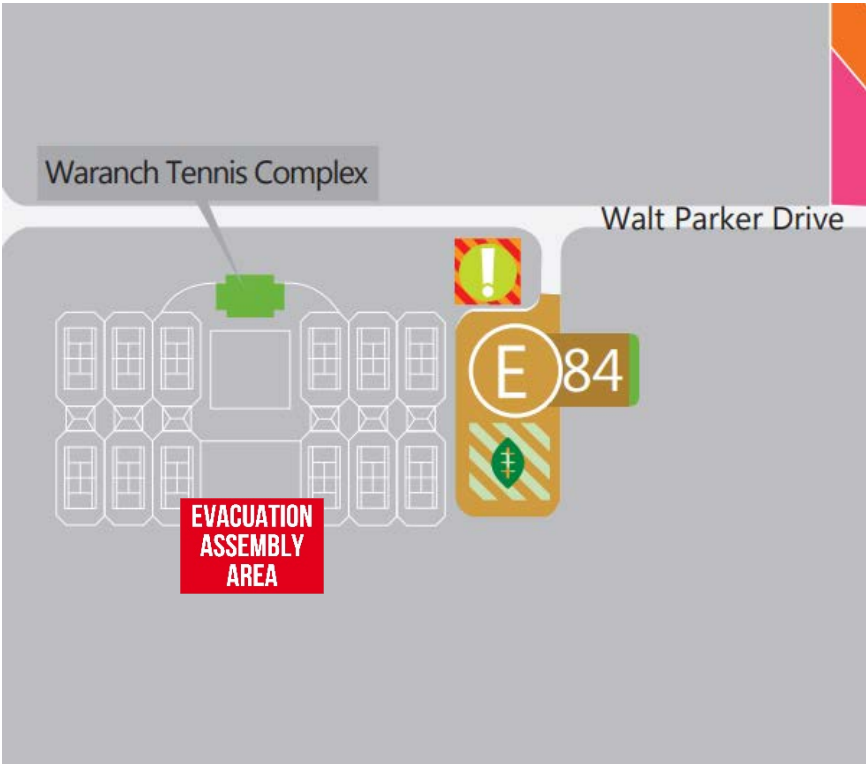
In the event of severe weather, all building occupants should immediately seek shelter in the designated shelter-in-place area in the building. If unable to safely move to the designated shelter-in-place area, seek shelter in a windowless interior room or hallway on the lowest floor of the building.

All building occupants and guests should take shelter in the interior of the building in room 106 and the guest restrooms in 108, 109.

Bomb Threat/Fire

In the event of a bomb threat or fire in the building, all building occupants should immediately evacuate the building using the nearest exit. Once outside, proceed to the designated assembly area. If unable to safely move to the designated assembly area, contact on or more members of your department or unit to let them know you are safe and inform them of your whereabouts.

All building occupants should immediately evacuate the building and proceed to the south side of the field in between the tennis courts.

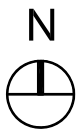
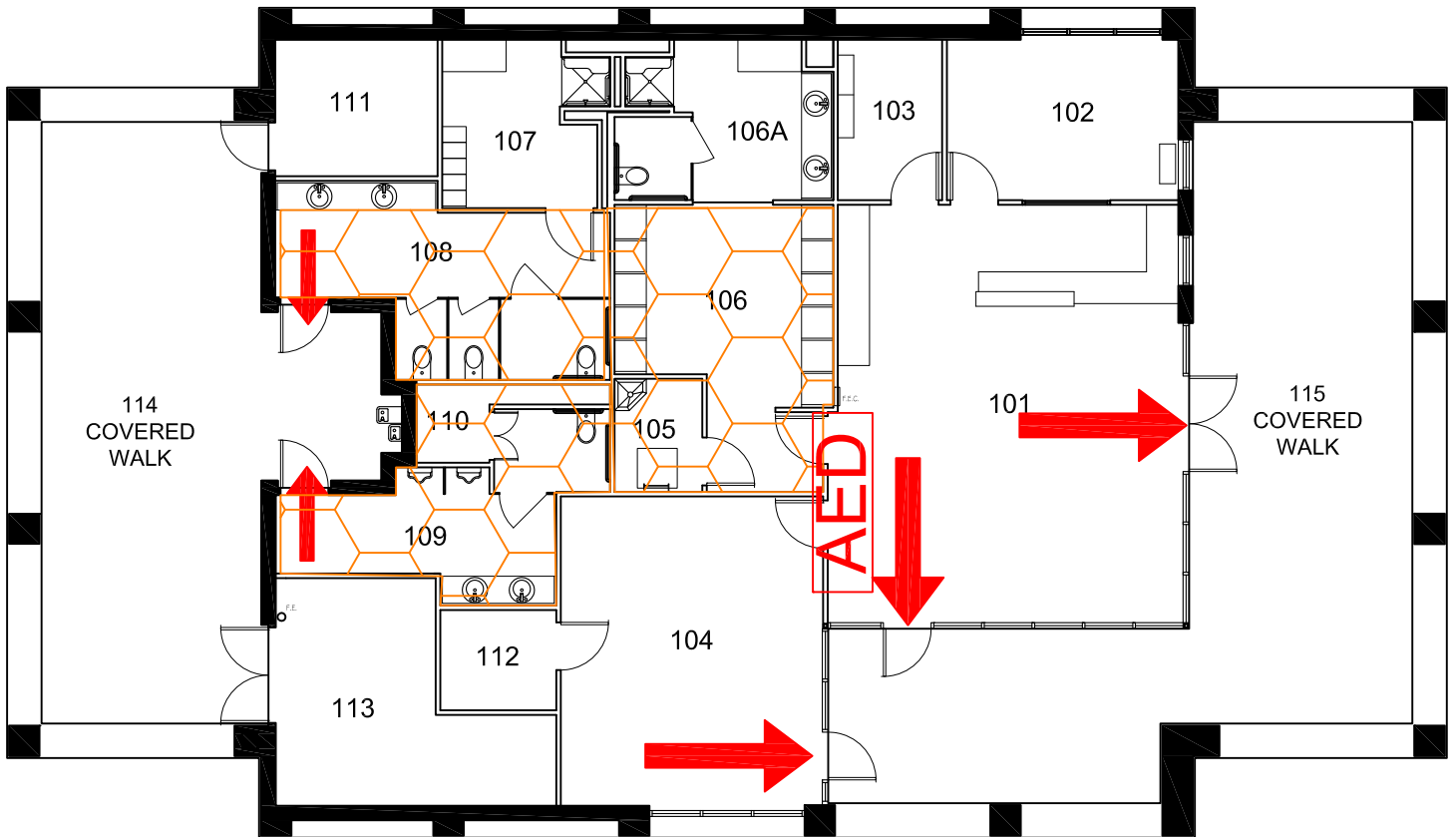


WARANCH TENNIS PAVILION

BLDG #0304

08-2006

Exterior Gross Area
2561




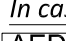



FIRST FLOOR PLAN



GRAPHIC SCALE

Safety Legend

-  Areas of Refuge
-  Tornado Shelter Areas
-  Exit/Evacuation Routes
- In case of fire, do not use elevator*
-  Automatic External Defibrillator
-  Evacuation Chair