

# Emergency Evacuation Procedures

## Wooten Hall

### Page Navigation

- [Severe Weather](#)
  - [Bomb Threat/Fire](#)
  - [Building Evacuation Maps](#)
- 

### Severe Weather

In the event of severe weather, all building occupants should immediately seek shelter in the designated shelter-in-place area in the building. If unable to safely move to the designated shelter-in-place area, seek shelter in a windowless interior room or hallway on the lowest floor of the building.

**All staff and others shall proceed to the first floor, North Hall of Wooten Hall.**

---

### Bomb Threat/Fire

In the event of a bomb threat or fire in the building, all building occupants should immediately evacuate the building using the nearest exit. Once outside, proceed to the designated assembly area. If unable to safely move to the designated assembly area, contact one or more members of your department or unit to let them know you are safe and inform them of your whereabouts.

Persons with mobility impairments who are unable to safely exit the building should move to a designated area of refuge and await assistance from emergency responders.

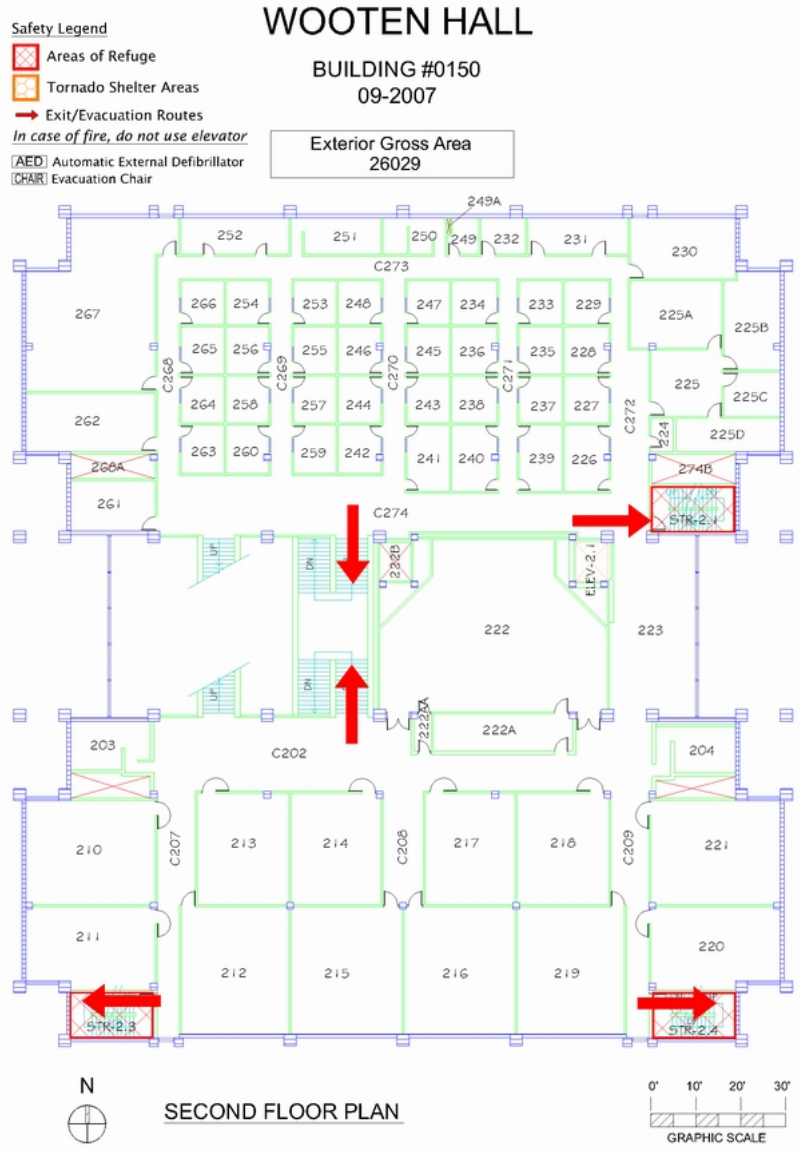
**All building occupants should proceed to parking lot 37 east of Wooten Hall.**

---

### Building Evacuation Maps


[Print Full Size Map](#)







[Print Full Size Map](#)


Safety Legend

 Areas of Refuge

 Tornado Shelter Areas

 Exit/Evacuation Routes

*In case of fire, do not use elevator*

 Automatic External Defibrillator

 Evacuation Chair

# WOOTEN HALL

BUILDING #0150  
07-2008

Exterior Gross Area  
25552

