

Emergency Evacuation Procedures

University Union Building

Severe Weather

In the event of severe weather, all building occupants should immediately seek shelter in the designated shelter-in-place area in the building. If unable to safely move to the designated shelter-in-place area, seek shelter in a windowless interior room or hallway on the lowest floor of the building.

All building occupants should take shelter in the post office area on the first floor. On floor 2, seek shelter from severe weather in the interior of classrooms 225, 227, and 229, restrooms, and hallway outside of room 222.

Bomb Threat/Fire

In the event of a bomb threat or fire in the building, all building occupants should immediately evacuate the building using the nearest exit. Once outside, proceed to the designated assembly area. If unable to safely move to the designated assembly area, contact one or more members of your department or unit to let them know you are safe and inform them of your whereabouts.

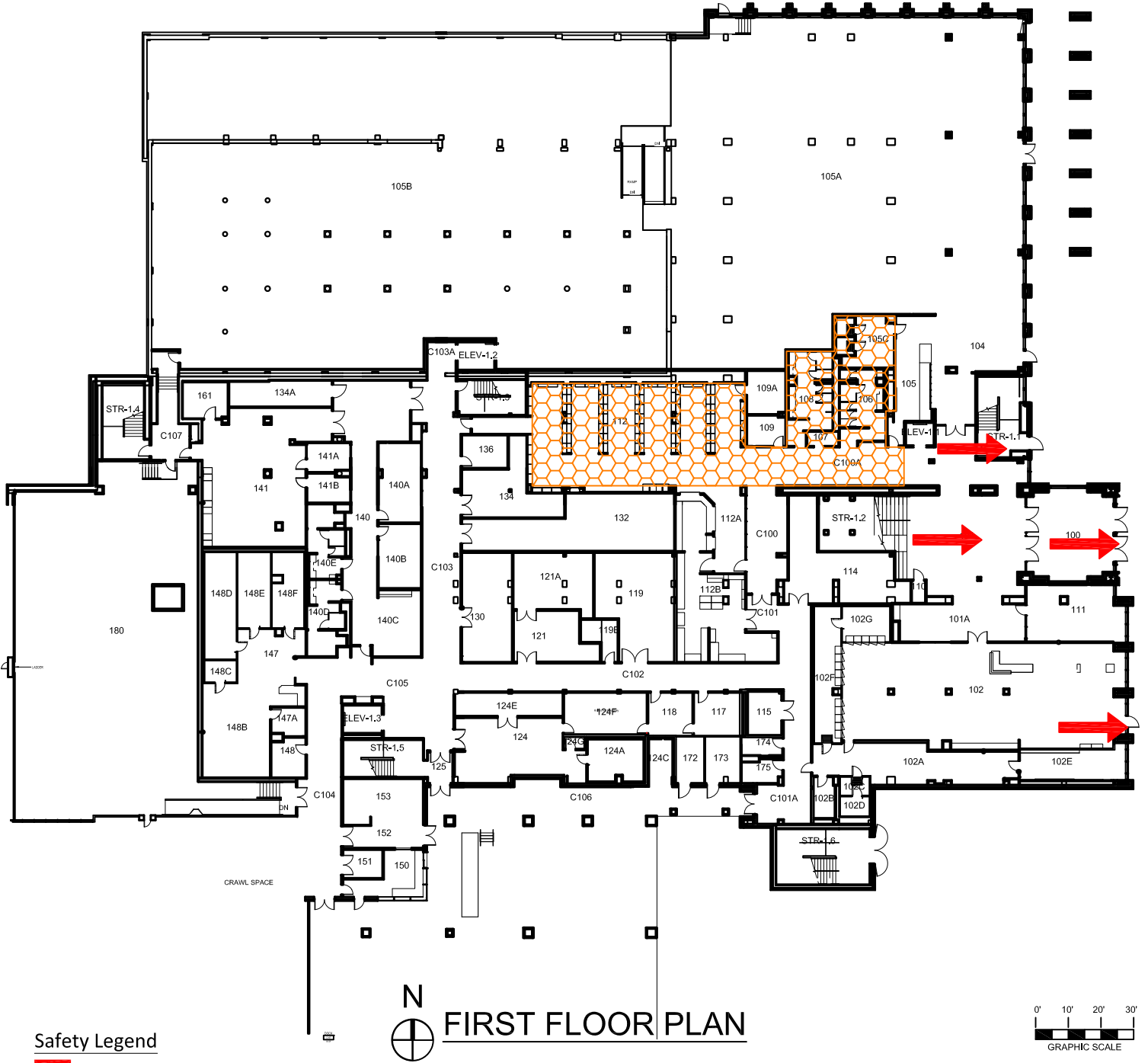
All building occupants should immediately evacuate the building and proceed across the street to the Baptist Student Ministry.

UNIVERSITY UNION



BUILDING #0155


11-2015


Exterior Gross Area
73382




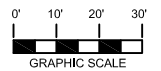
Safety Legend

-  Areas of Refuge
-  Tornado Shelter Areas

 Exit/Evacuation Routes
In case of fire, do not use elevator

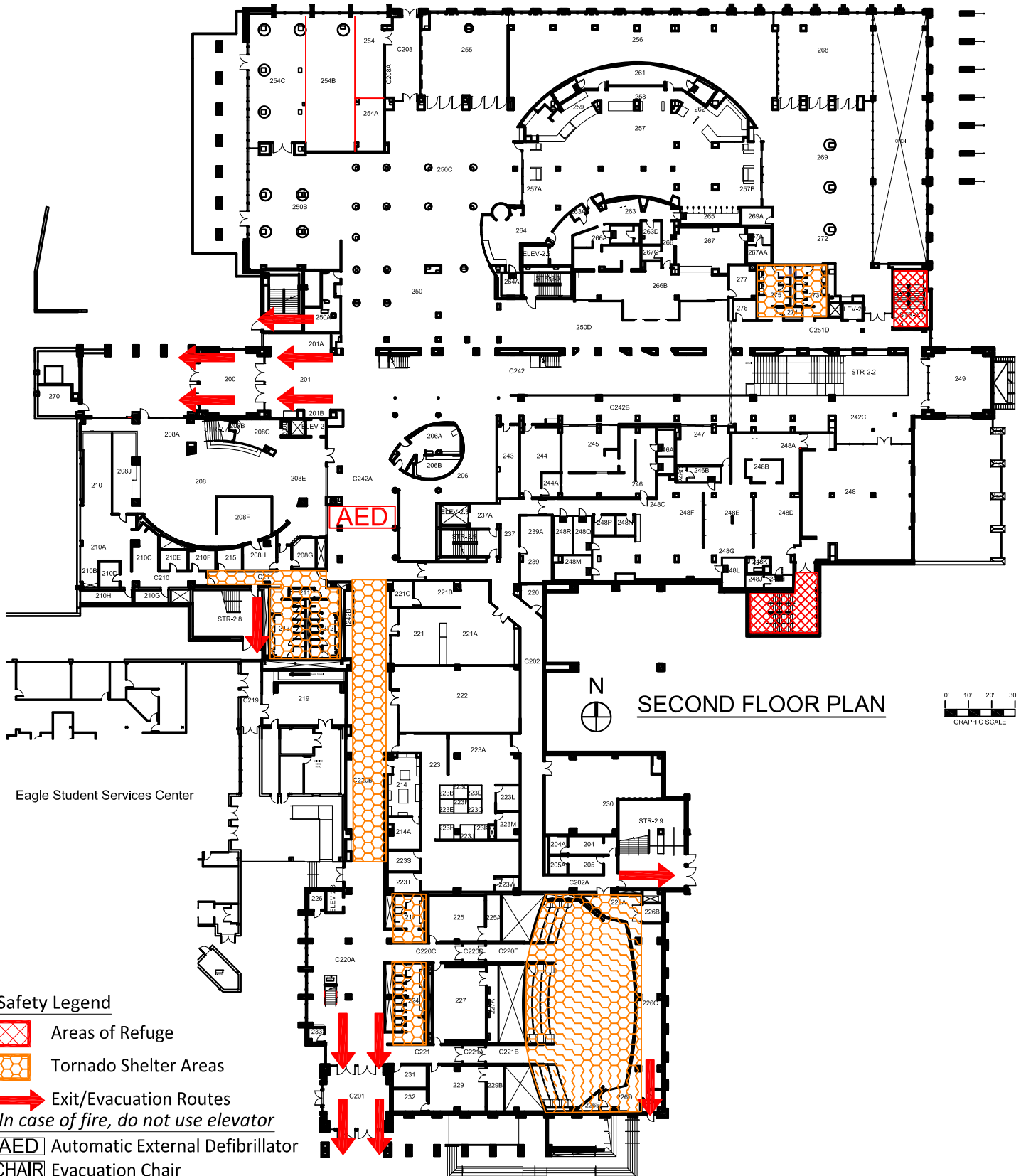
 Automatic External Defibrillator

 Evacuation Chair



UNIVERSITY UNION BUILDING #0155 12-2015

Exterior Gross Area
105452

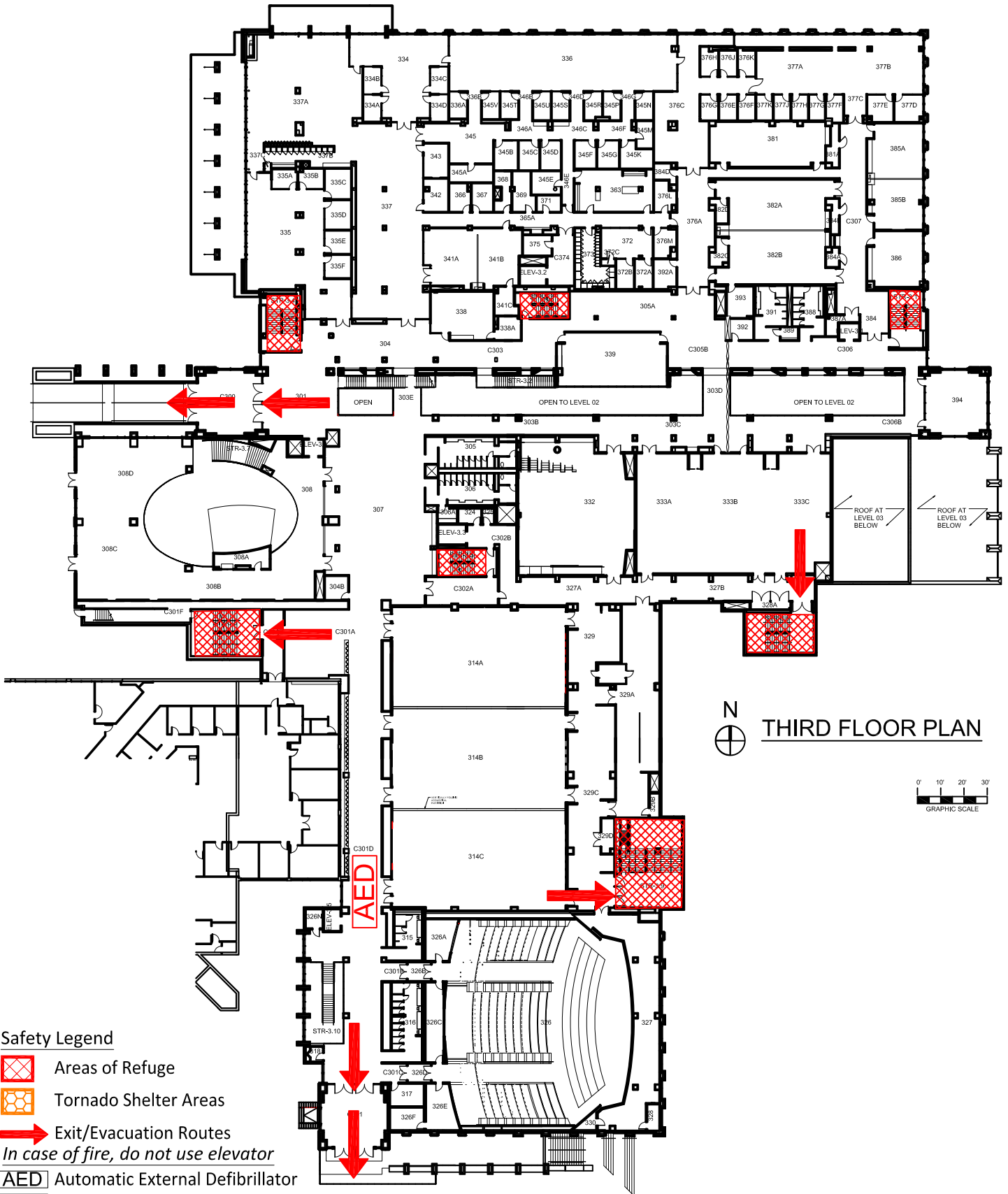


Safety Legend

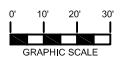
- Areas of Refuge
- Tornado Shelter Areas
- Exit/Evacuation Routes
In case of fire, do not use elevator
- AED Automatic External Defibrillator
- CHAIR Evacuation Chair

UNIVERSITY UNION
 BUILDING #0155
 01-2016




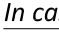

Exterior Gross Area
 105979



N
 THIRD FLOOR PLAN

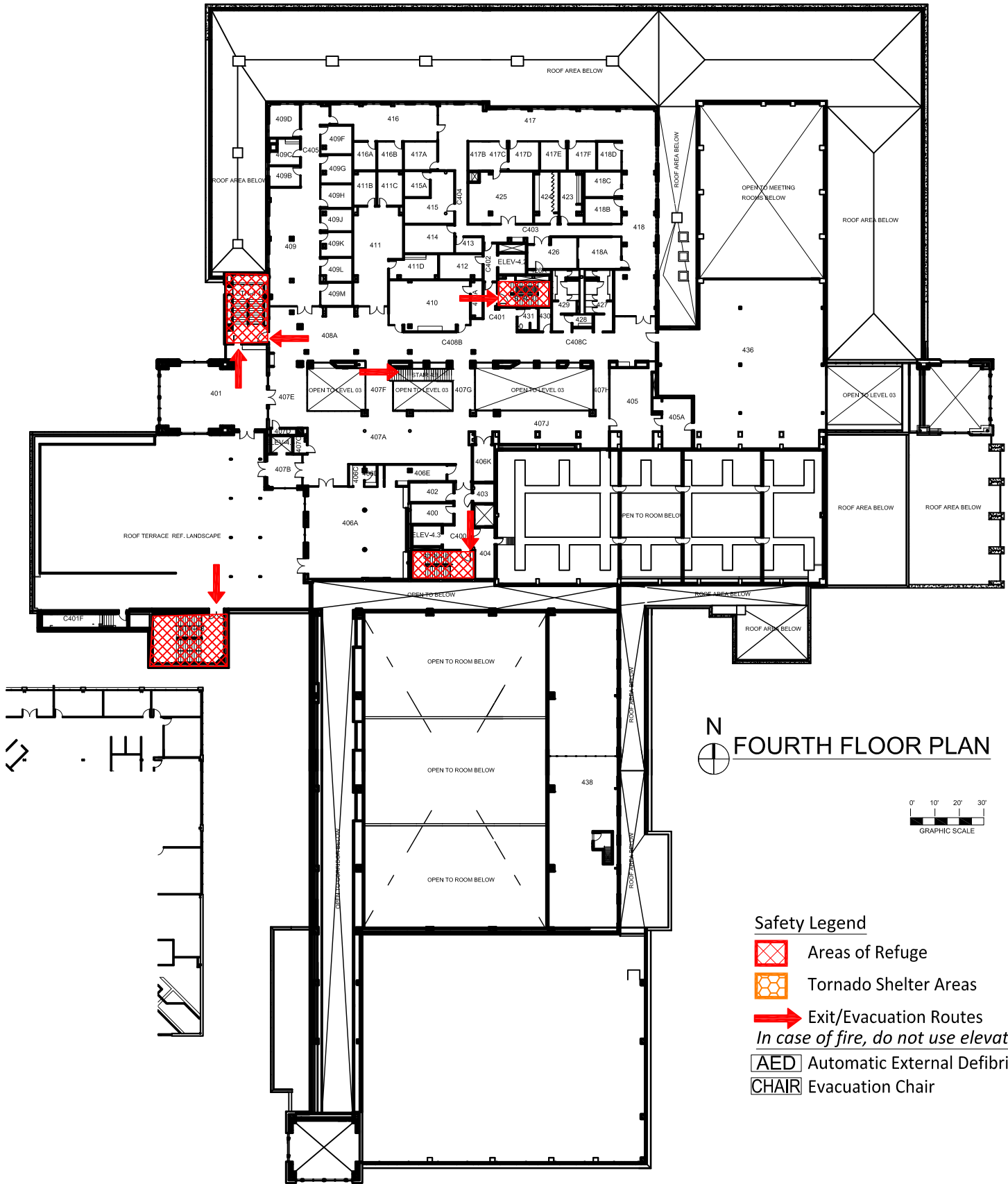


Safety Legend

-  Areas of Refuge
-  Tornado Shelter Areas
-  Exit/Evacuation Routes
- In case of fire, do not use elevator*
-  AED Automatic External Defibrillator
-  CHAIR Evacuation Chair




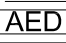

UNIVERSITY UNION
 BUILDING #0155
 01-2016

Exterior Gross Area
 37044



N
 FOURTH FLOOR PLAN



- Safety Legend**
-  Areas of Refuge
 -  Tornado Shelter Areas
 -  Exit/Evacuation Routes
In case of fire, do not use elevator
 -  Automatic External Defibrillator
 -  Evacuation Chair