

# Emergency Evacuation Procedures

## Music Annex

### Page Navigation

- [Severe Weather](#)
  - [Bomb Threat/Fire](#)
  - [Building Evacuation Maps](#)
- 

### Severe Weather

In the event of severe weather, all building occupants should immediately seek shelter in the designated shelter-in-place area in the building. If unable to safely move to the designated shelter-in-place area, seek shelter in a windowless interior room or hallway on the lowest floor of the building.

**All building occupants should take shelter in the main hallways of the Music Building on the 1st and 2nd floors. Avoid standing near windows, walls, and doors made of glass.**

---

### Bomb Threat/Fire

In the event of a bomb threat or fire in the building, all building occupants should immediately evacuate the building using the nearest exit. Once outside, proceed to the designated assembly area. If unable to safely move to the designated assembly area, contact one or more members of your department or unit to let them know you are safe and inform them of your whereabouts.

Persons with mobility impairments who are unable to safely exit the building should move to a designated area of refuge and await assistance from emergency responders.

**All building occupants should immediately evacuate the building and proceed to the Willis Library Mall east of the Music Building.**

---



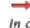


### Building Evacuation Maps

[Print Full Size Map](#)

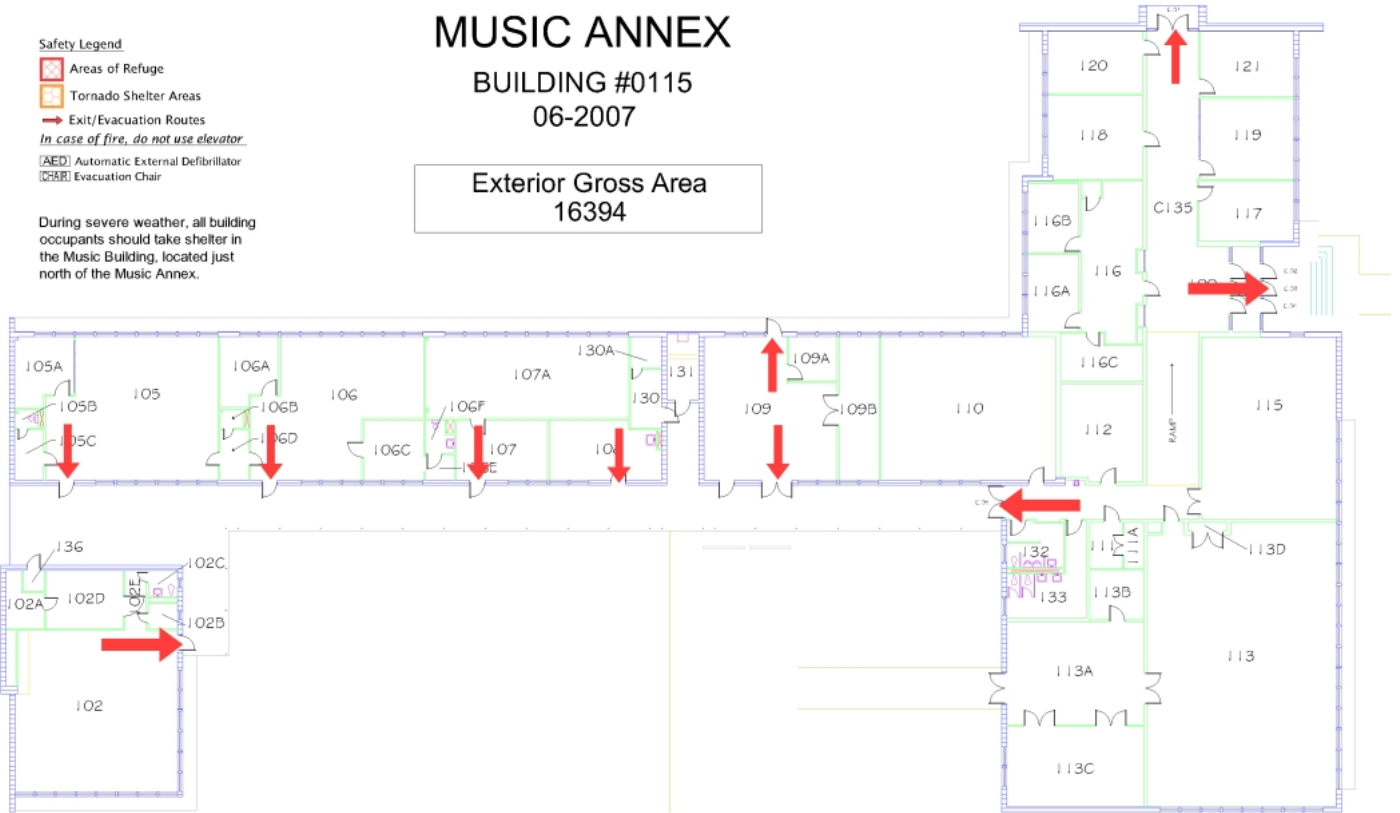
# MUSIC ANNEX BUILDING #0115 06-2007

Exterior Gross Area  
16394

### Safety Legend

-  Areas of Refuge
-  Tornado Shelter Areas
-  Exit/Evacuation Routes
- In case of fire, do not use elevator*
-  AED Automatic External Defibrillator
-  Evacuation Chair

During severe weather, all building occupants should take shelter in the Music Building, located just north of the Music Annex.



FIRST FLOOR PLAN

