

Emergency Evacuation Procedures

Marquis Hall

Severe Weather

In the event of severe weather, all building occupants should immediately seek shelter in the designated shelter-in-place area in the building. If unable to safely move to the designated shelter-in-place area, seek shelter in a windowless interior room or hallway on the lowest floor of the building.

All building occupants should take shelter in the interior hallway in the building on the first floor and restrooms 111 and 109. Additional safe areas for sheltering are room 107, 105, 125, and 145.

Bomb Threat/Fire

In the event of a bomb threat or fire in the building, all building occupants should immediately evacuate the building using the nearest exit. Once outside, proceed to the designated assembly area. If unable to safely move to the designated assembly area, contact one or more members of your department or unit to let them know you are safe and inform them of your whereabouts.

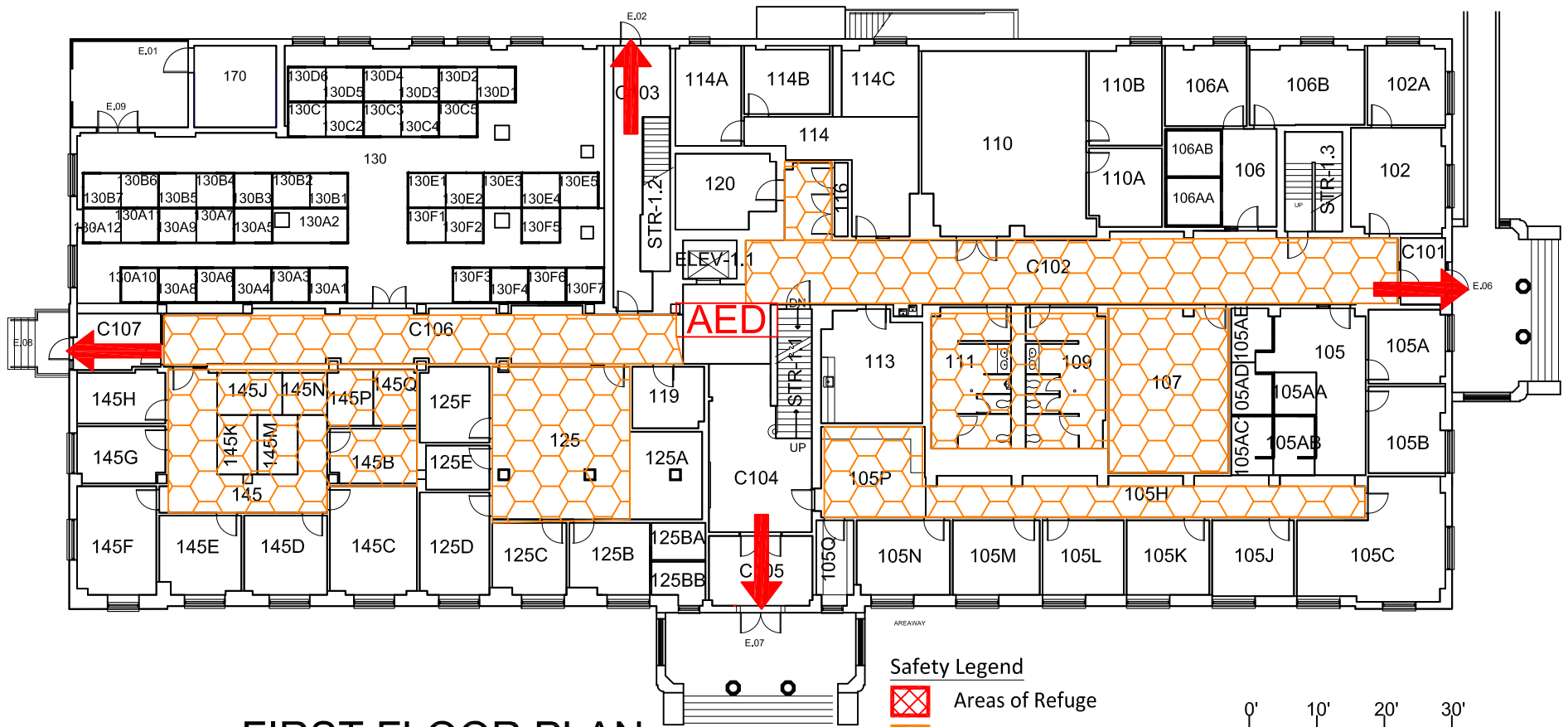
All building occupants should immediately evacuate the building and proceed to the East side of the building close to the General Academic Building.

MARQUIS HALL

BUILDING #0130

04-2016





Exterior Gross Area
17013

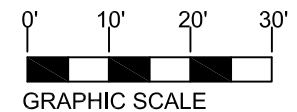


FIRST FLOOR PLAN



Safety Legend

-  Areas of Refuge
-  Tornado Shelter Areas
-  Exit/Evacuation Routes
In case of fire, do not use elevator
-  AED Automatic External Defibrillator

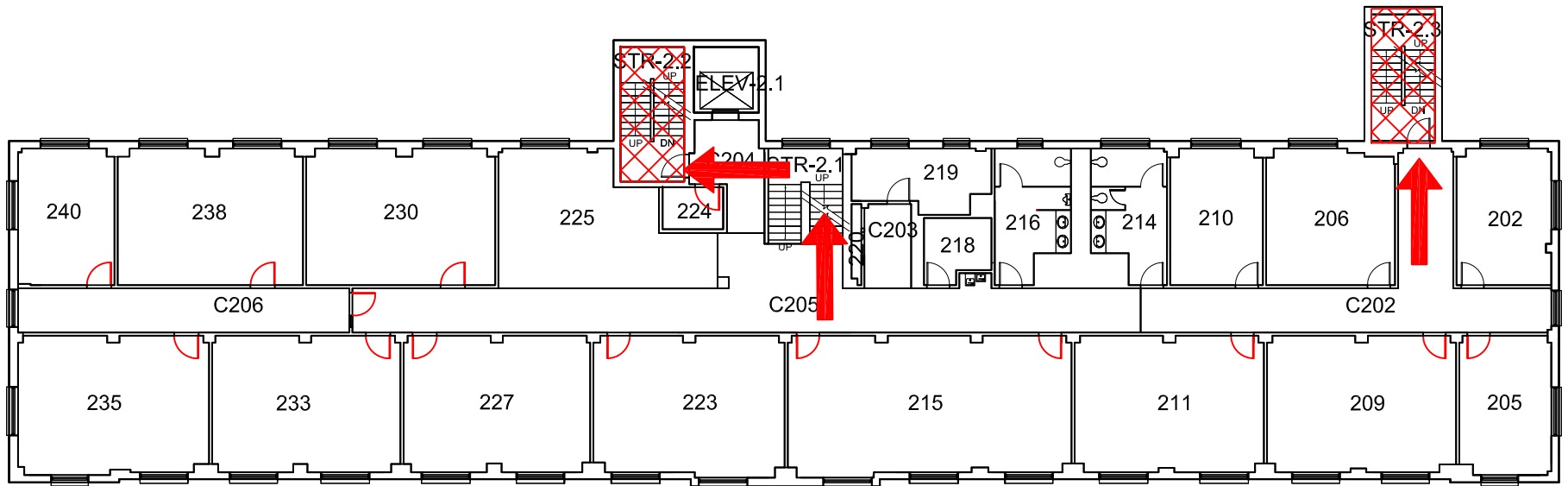


MARQUIS HALL

BUILDING #0130





05-2015

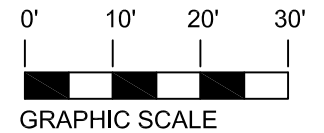
Exterior Gross Area
9635



SECOND FLOOR PLAN

Safety Legend

-  Areas of Refuge
-  Tornado Shelter Areas
-  Exit/Evacuation Routes
- In case of fire, do not use elevator*
-  Automatic External Defibrillator

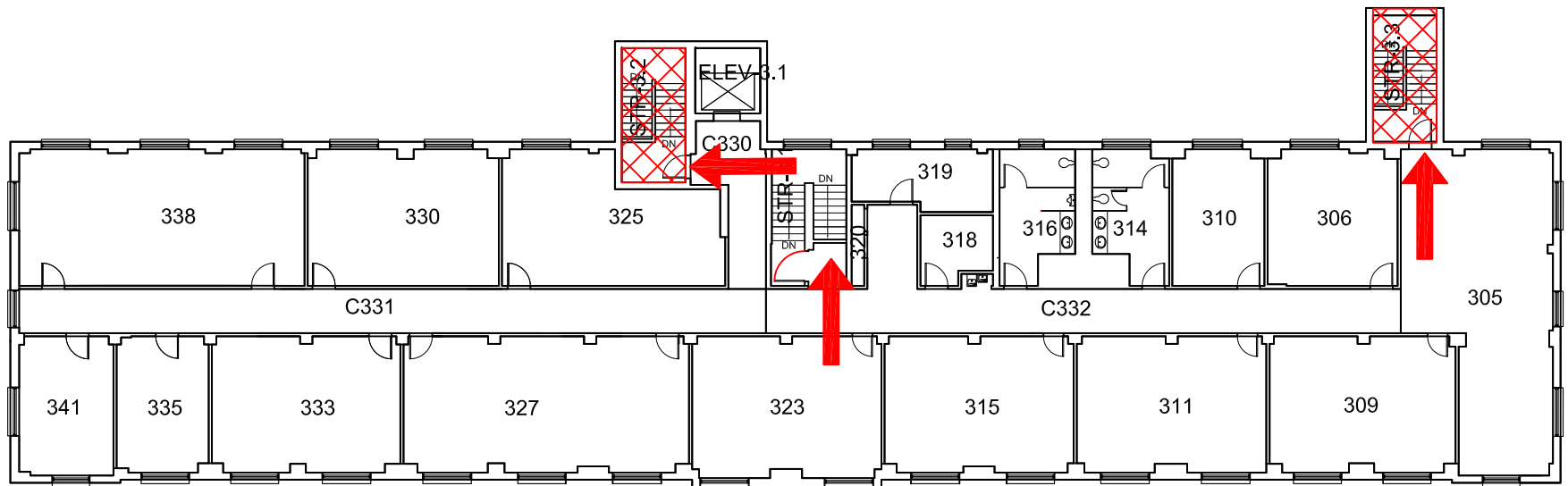


MARQUIS HALL

BUILDING #0130





05-2015

Exterior Gross Area
9635



THIRD FLOOR PLAN

Safety Legend

-  Areas of Refuge
-  Tornado Shelter Areas
-  Exit/Evacuation Routes
In case of fire, do not use elevator
-  AED Automatic External Defibrillator

