

Emergency Evacuation Procedures

Greek Life Center

Severe Weather

In the event of severe weather, all building occupants should immediately seek shelter in the designated shelter-in-place area in the building. If unable to safely move to the designated shelter-in-place area, seek shelter in a windowless interior room or hallway on the lowest floor of the building.

All building occupants should take shelter in the restrooms and room 101C and E

Bomb Threat/Fire

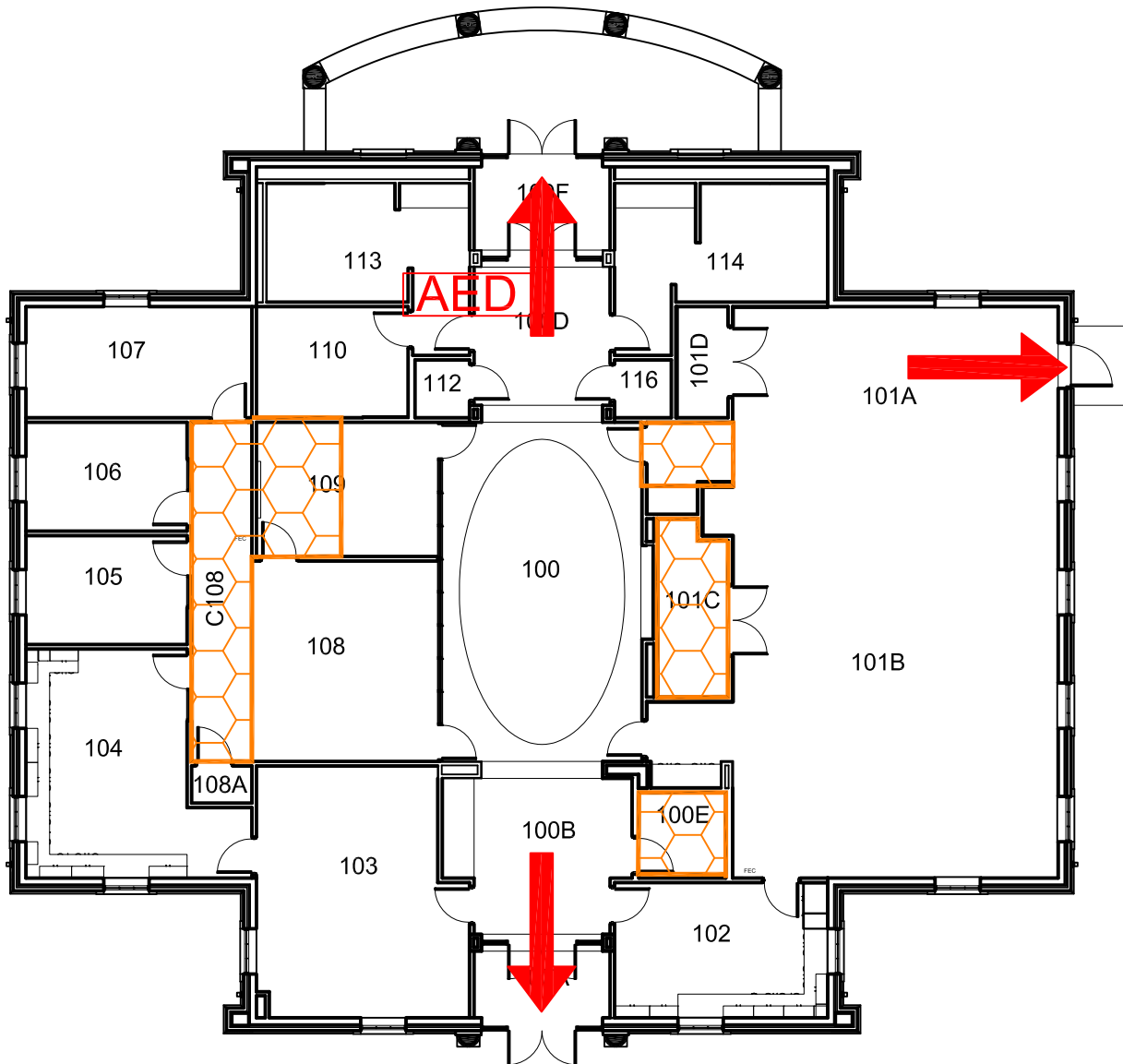
In the event of a bomb threat or fire in the building, all building occupants should immediately evacuate the building using the nearest exit. Once outside, proceed to the designated assembly area. If unable to safely move to the designated assembly area, contact one or more members of your department or unit to let them know you are safe and inform them of your whereabouts.

All building occupants should immediately evacuate the building and proceed to the parking lot on the East side of the building

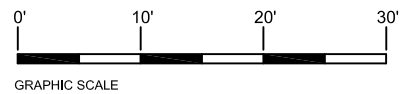
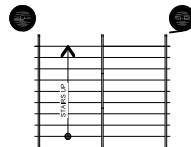
GREEK LIFE CENTER

BLDG # 0315
03-2015






Exterior Gross Area
6315



FIRST FLOOR PLAN



Safety Legend

-  Areas of Refuge
-  Tornado Shelter Areas
-  Exit/Evacuation Routes
- In case of fire, do not use elevator*
-  AED Automatic External Defibrillator
-  CHAIR Evacuation Chair