

Emergency Evacuation Procedures

General Academic Building

Severe Weather

In the event of severe weather, all building occupants should immediately seek shelter in the designated shelter-in-place area in the building. If unable to safely move to the designated shelter-in-place area, seek shelter in a windowless interior room or hallway on the lowest floor of the building.

All building occupants should take shelter in the interior hallways on the 1st floor of the building

Bomb Threat/Fire

In the event of a bomb threat or fire in the building, all building occupants should immediately evacuate the building using the nearest exit. Once outside, proceed to the designated assembly area. If unable to safely move to the designated assembly area, contact one or more members of your department or unit to let them know you are safe and inform them of your whereabouts.

Persons with mobility impairments who are unable to safely exit the building should move to a designated area of refuge and await assistance from emergency responders.

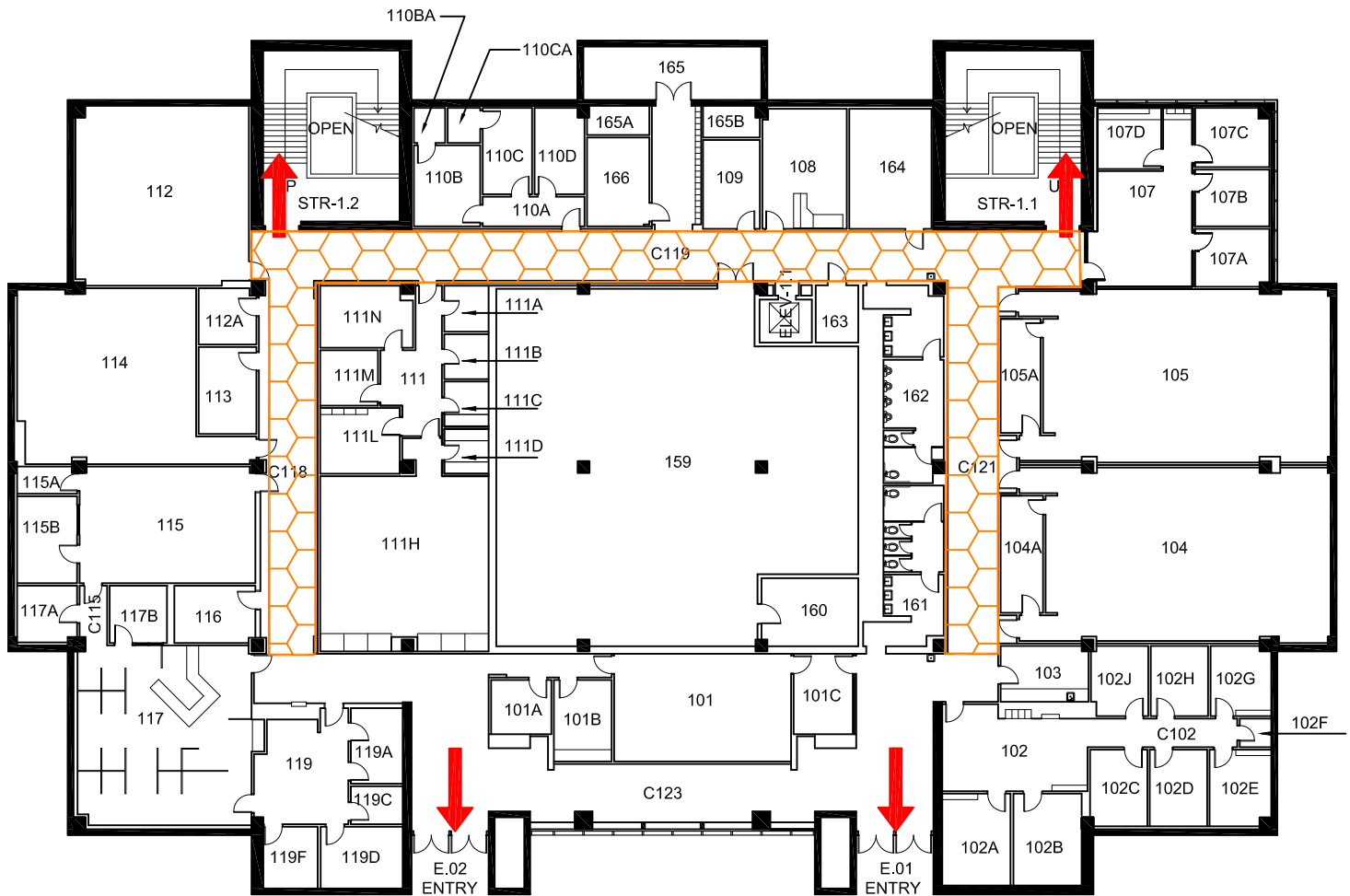
All building occupants should immediately evacuate the building and proceed to the area east of the building

GENERAL ACADEMIC BUILDING

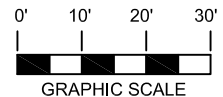
BLDG #0108

08-2014



Exterior Gross Area
28078




FIRST FLOOR PLAN




Safety Legend

-  Areas of Refuge
-  Tornado Shelter Areas

 Exit/Evacuation Routes

In case of fire, do not use elevator

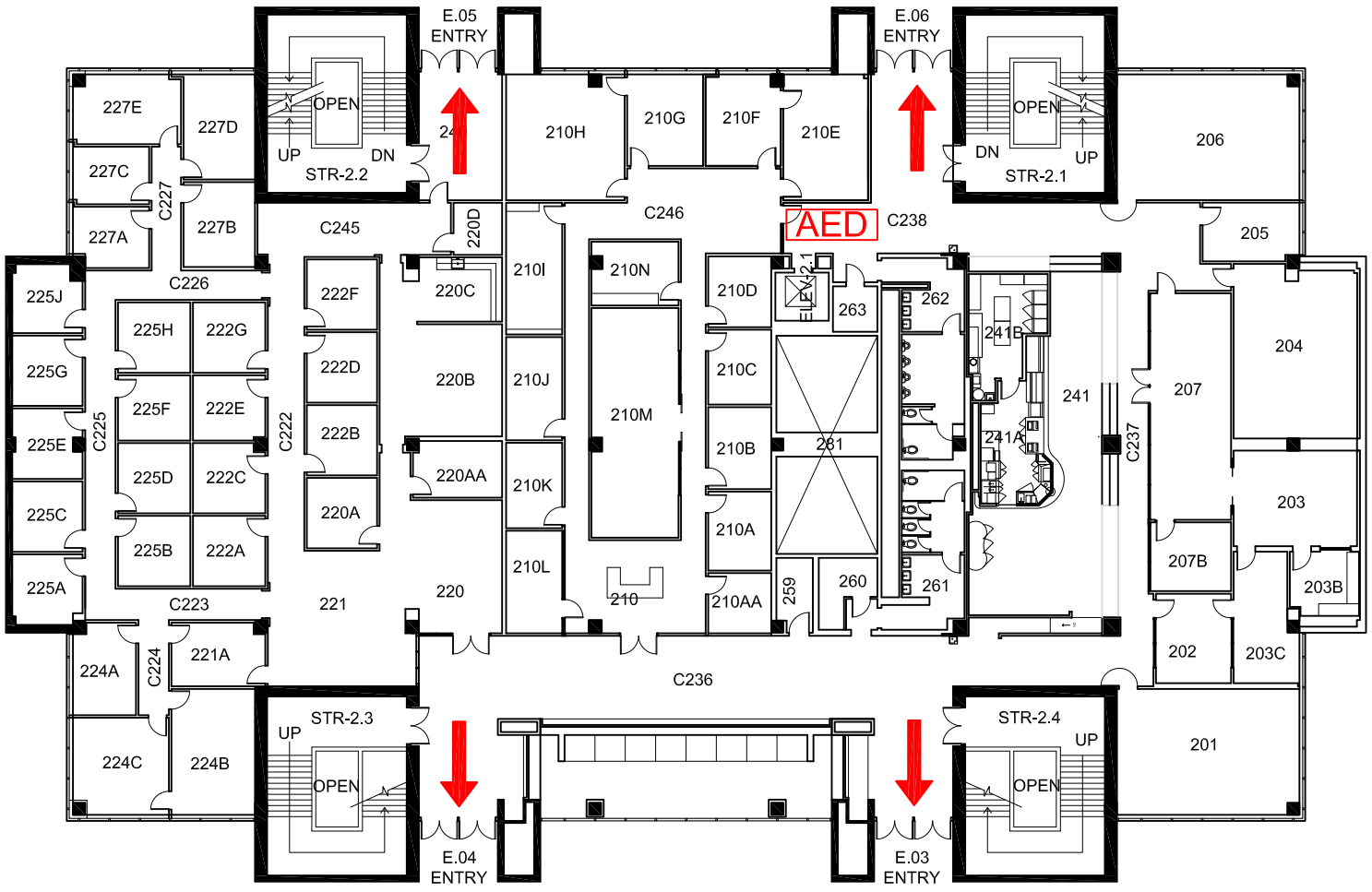
 Automatic External Defibrillator

 Evacuation Chair

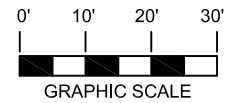
GENERAL ACADEMIC BUILDING

BLDG #0108
03-2014



Exterior Gross Area
27184





SECOND FLOOR PLAN




Safety Legend

-  Areas of Refuge
-  Tornado Shelter Areas

 Exit/Evacuation Routes
In case of fire, do not use elevator

 Automatic External Defibrillator

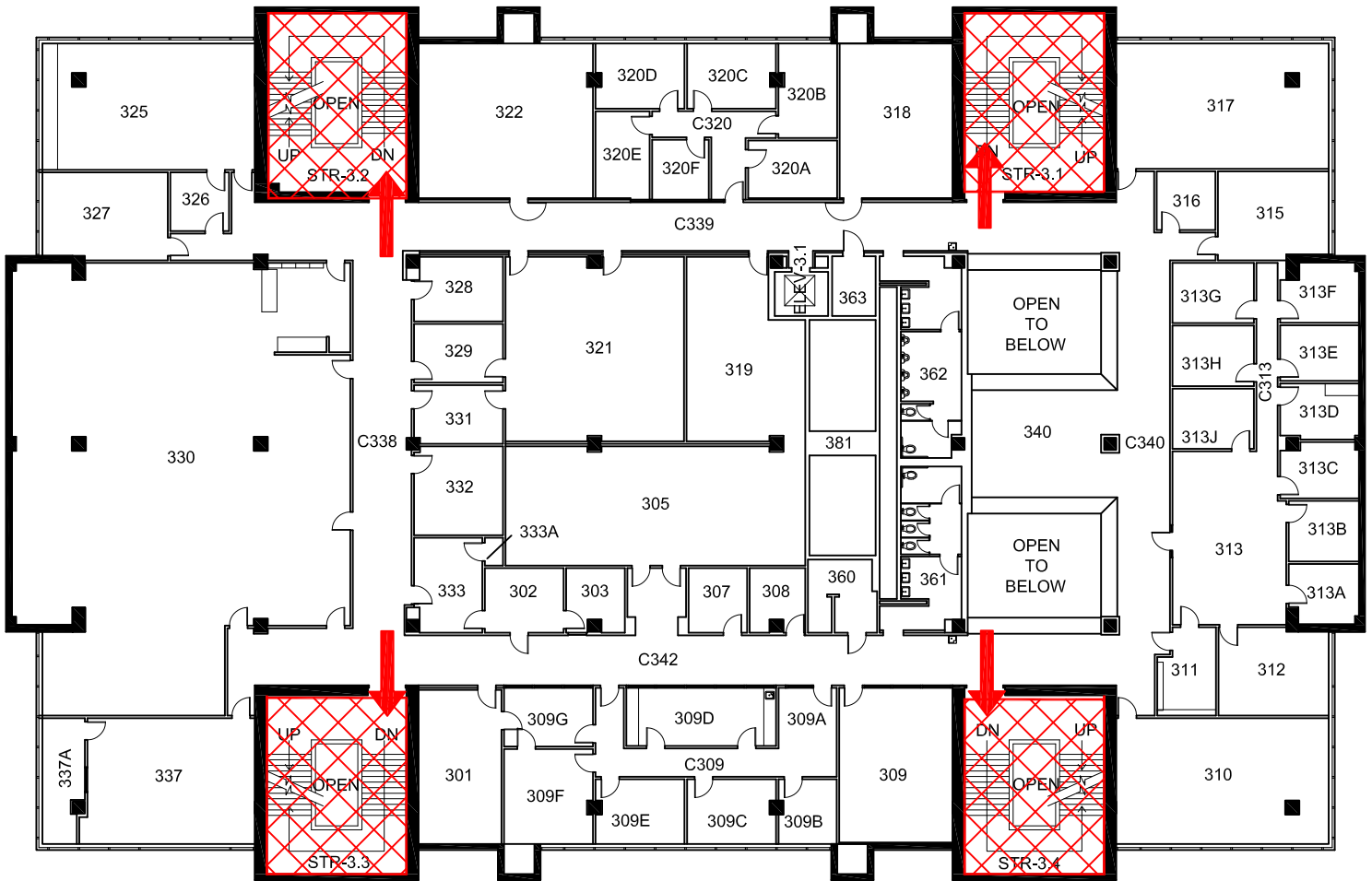
 Evacuation Chair

GENERAL ACADEMIC BUILDING

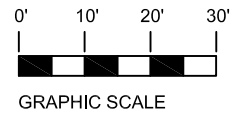
BLDG #0108

08-2014

Exterior Gross Area
29206



THIRD FLOOR PLAN



Safety Legend

- Areas of Refuge
- Tornado Shelter Areas

Exit/Evacuation Routes
In case of fire, do not use elevator

AED Automatic External Defibrillator

CHAIR Evacuation Chair

GENERAL ACADEMIC BUILDING

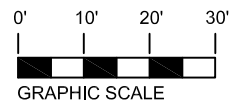
BLDG #0108

06-2014






Exterior Gross Area
31472



FOURTH FLOOR PLAN



Safety Legend

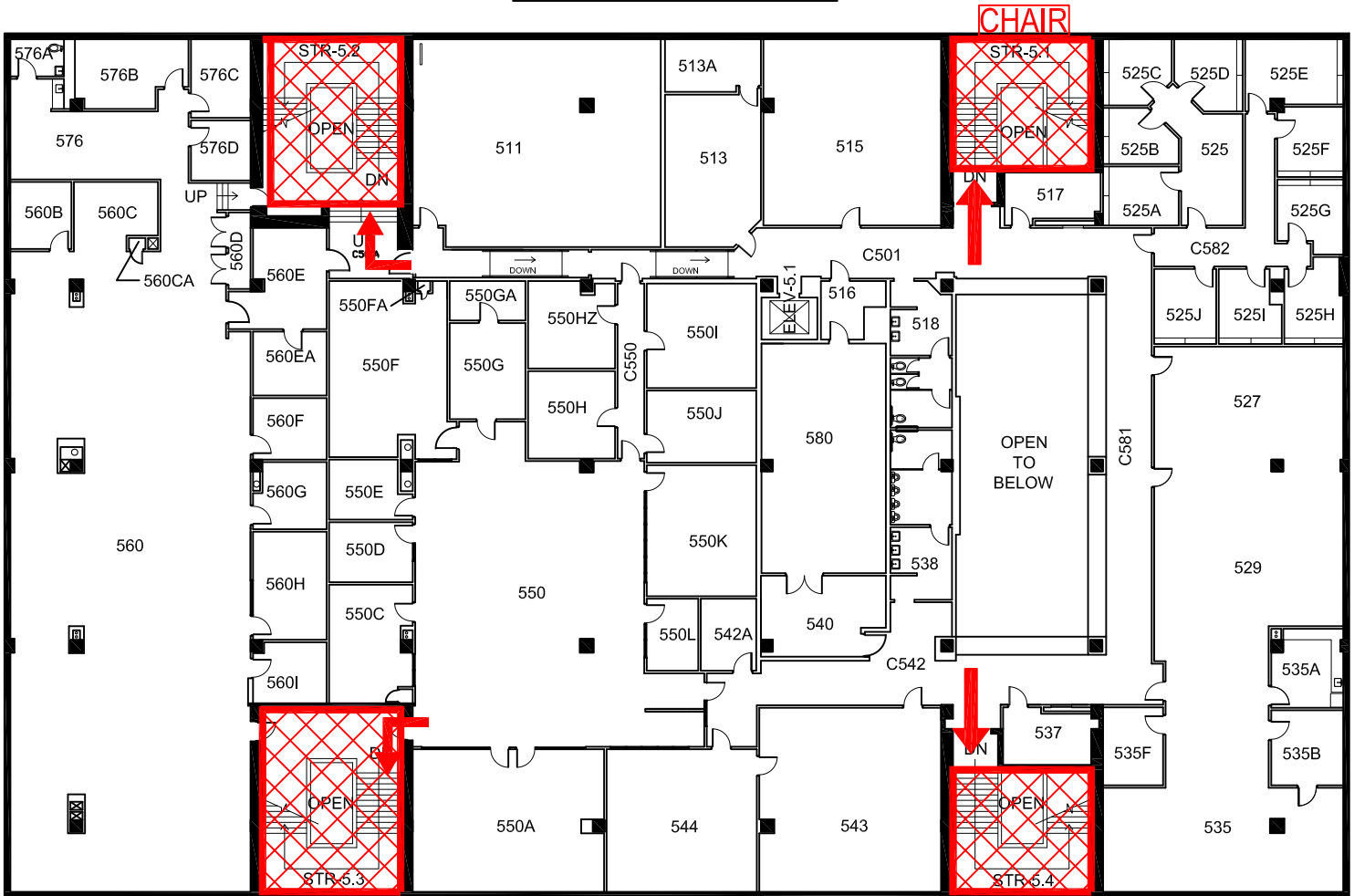
-  Areas of Refuge
-  Tornado Shelter Areas
-  Exit/Evacuation Routes
- In case of fire, do not use elevator*
-  AED Automatic External Defibrillator
-  CHAIR Evacuation Chair

GENERAL ACADEMIC BUILDING

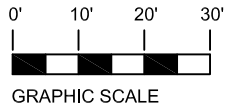
BLDG #0108

03-2014


Exterior Gross Area
31008





N FIFTH FLOOR PLAN




Safety Legend


 Areas of Refuge

 Tornado Shelter Areas

 Exit/Evacuation Routes

In case of fire, do not use elevator

 Automatic External Defibrillator

 Evacuation Chair