

# Emergency Evacuation Procedures

## Air Force ROTC Building

### Severe Weather

In the event of severe weather, all building occupants should immediately seek shelter in the designated shelter-in-place area in the building. If unable to safely move to the designated shelter-in-place area, seek shelter in a windowless interior room or hallway on the lowest floor of the building.

**All building occupants should take shelter in rooms 102, 104, 106, 109, and/or 112.**

---

### Bomb Threat/Fire

In the event of a bomb threat or fire in the building, all building occupants should immediately evacuate the building using the nearest exit. Once outside, proceed to the designated assembly area. If unable to safely move to the designated assembly area, contact one or more members of your department or unit to let them know you are safe and inform them of your whereabouts.

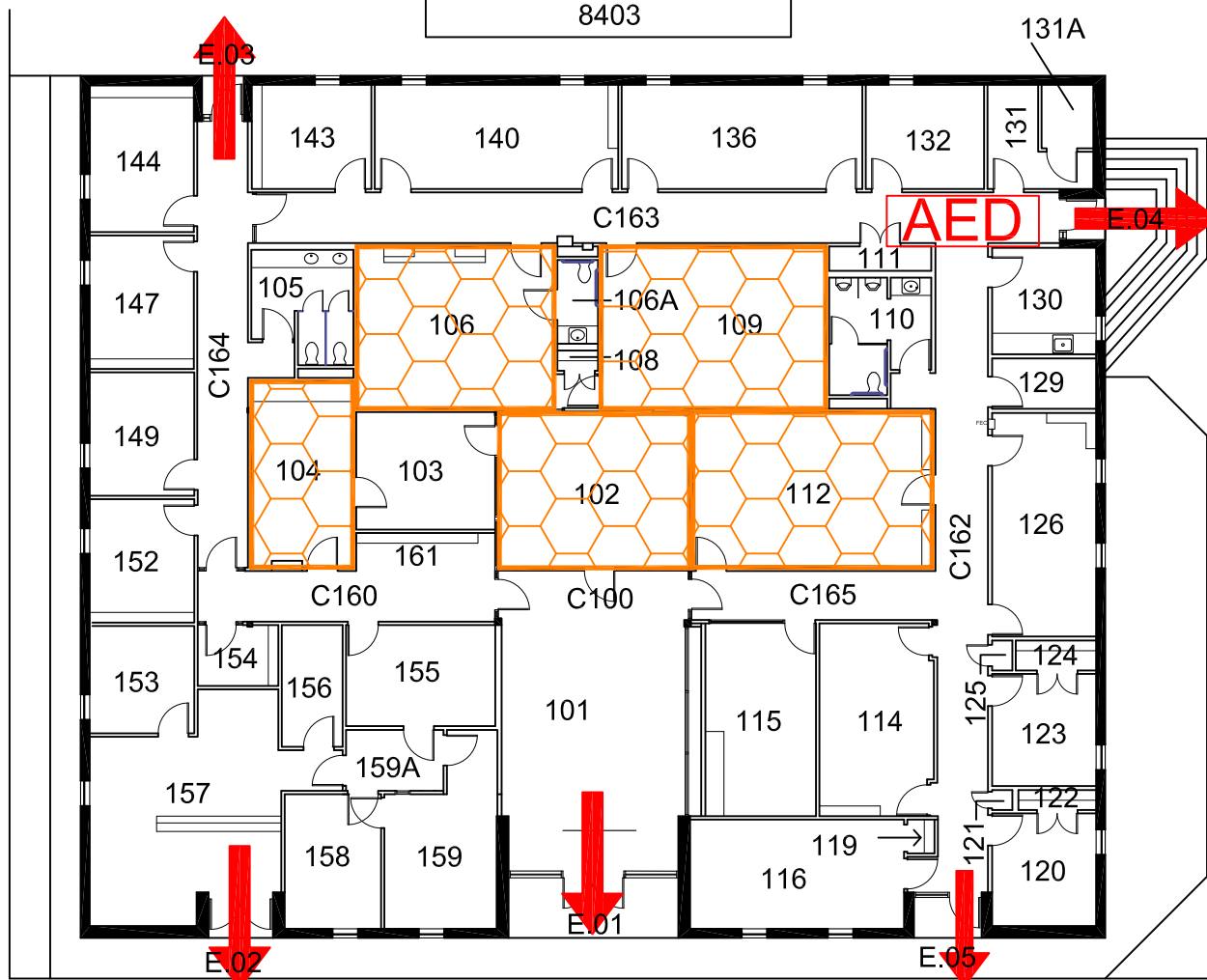
**All building occupants should immediately evacuate the building and proceed to parking lot 20 east of Fouts Field.**

# AFROTC BUILDING

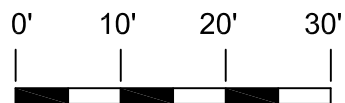
BLDG #0305

07-2008

Exterior Gross Area  
8403






## FIRST FLOOR PLAN




GRAPHIC SCALE

### Safety Legend

-  Areas of Refuge
-  Tornado Shelter Areas

 Exit/Evacuation Routes

*In case of fire, do not use elevator*

 AED Automatic External Defibrillator

 CHAIR Evacuation Chair