

Emergency Evacuation Procedures

East Classroom Building

912 Chestnut St. , Denton, TX 76201

Severe Weather

In the event of severe weather, all building occupants should immediately seek shelter in the designated shelter-in-place area in the building. If unable to safely move to the designated shelter-in-place area, seek shelter in a windowless interior room or hallway on the lowest floor of the building.

If before 6pm, all building occupants should take shelter in the Speech and Hearing Clinic, located just north of the East Classroom Building. If unable to seek shelter in Speech and Hearing, and if it is after 6pm, seek shelter in the East Classroom Building in the interior hallways.

Bomb Threat/Fire

In the event of a bomb threat or fire in the building, all building occupants should immediately evacuate the building using the nearest exit. Once outside, proceed to the designated assembly area. If unable to safely move to the designated assembly area, contact one or more members of your department or unit to let them know you are safe and inform them of your whereabouts.

Persons with mobility impairments who are unable to safely exit the building should move to a designated area of refuge and await assistance from emergency responders.

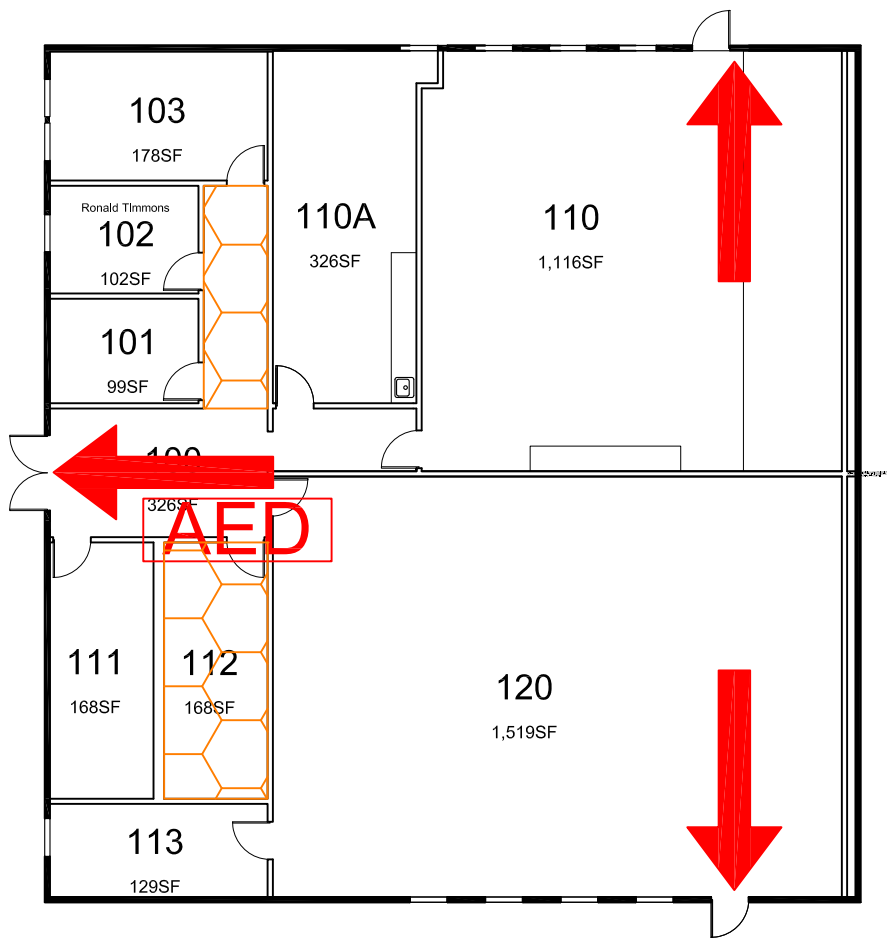
All building occupants should immediately evacuate the building and proceed to parking lot 53, east of the East Classroom Building.

EAST CLASSROOM

BLDG #0330

11- 2015

Exterior Gross Area
4436



Safety Legend

- Areas of Refuge
- Tornado Shelter Areas
- Exit/Evacuation Routes
In case of fire, do not use elevator
- AED Automatic External Defibrillator
- CHAIR Evacuation Chair



FIRST FLOOR PLAN

