

# Emergency Evacuation Procedures

## Curry Hall

### Severe Weather

In the event of severe weather, all building occupants should immediately seek shelter in the designated shelter-in-place area in the building. If unable to safely move to the designated shelter-in-place area, seek shelter in a windowless interior room or hallway on the lowest floor of the building.

**All building occupants should take shelter the main hallways of the first and second floors.**

---

### Bomb Threat/Fire

In the event of a bomb threat or fire in the building, all building occupants should immediately evacuate the building using the nearest exit. Once outside, proceed to the designated assembly area. If unable to safely move to the designated assembly area, contact on or more members of your department or unit to let them know you are safe and inform them of your whereabouts.

Persons with mobility impairments who are unable to safely exit the building should move to a designated area of refuge and await assistance from emergency responders.

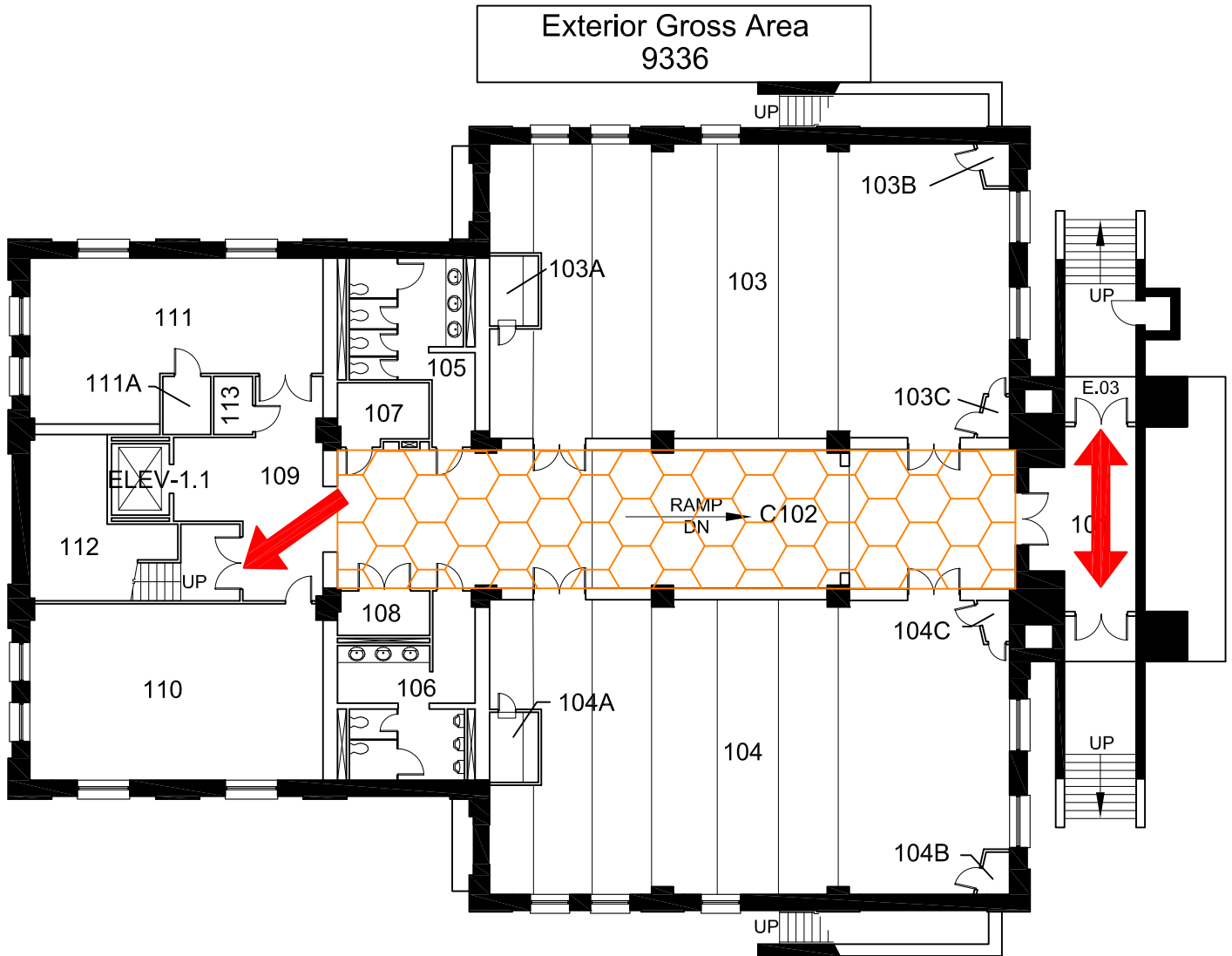
**All building occupants should immediately evacuate the building and proceed to the lawn south east of Hickory Hall by the Art building.**



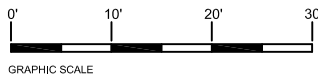
# CURRY HALL

BLDG #0107

04-2007








## FIRST FLOOR PLAN



GRAPHIC SCALE

### Safety Legend





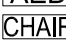
-  Areas of Refuge
-  Tornado Shelter Areas
-  Exit/Evacuation Routes  
*In case of fire, do not use elevator*
-  Automatic External Defibrillator
-  Evacuation Chair

# CURRY HALL

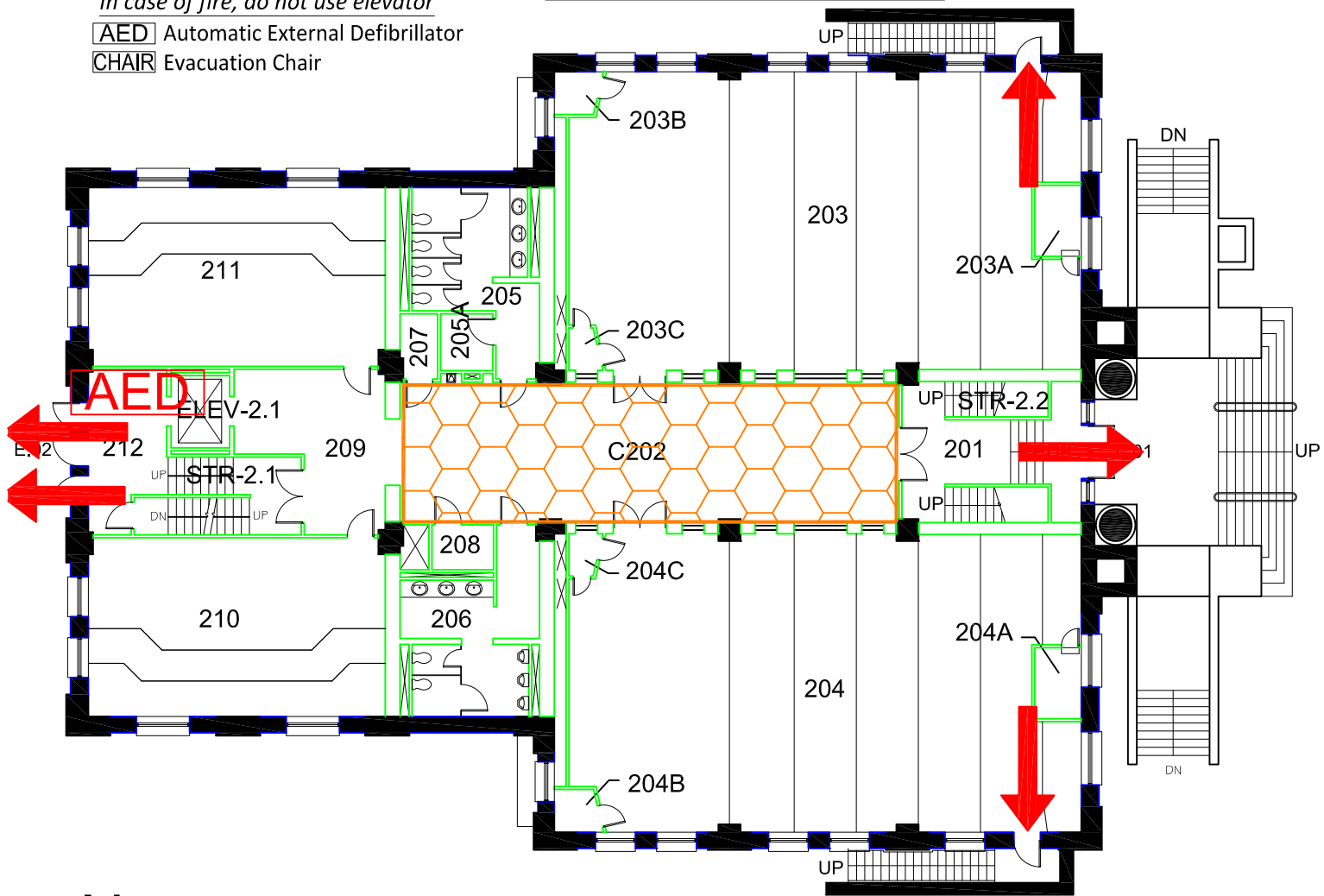
## BLDG #0107

### 06-2007

#### Safety Legend

-  Areas of Refuge
-  Tornado Shelter Areas
-  Exit/Evacuation Routes  
*In case of fire, do not use elevator*
-  AED Automatic External Defibrillator
-  CHAIR Evacuation Chair

Exterior Gross Area  
9035



## SECOND FLOOR PLAN





# CURRY HALL


## BLDG #0107

### 01-2018


#### Safety Legend

 Areas of Refuge

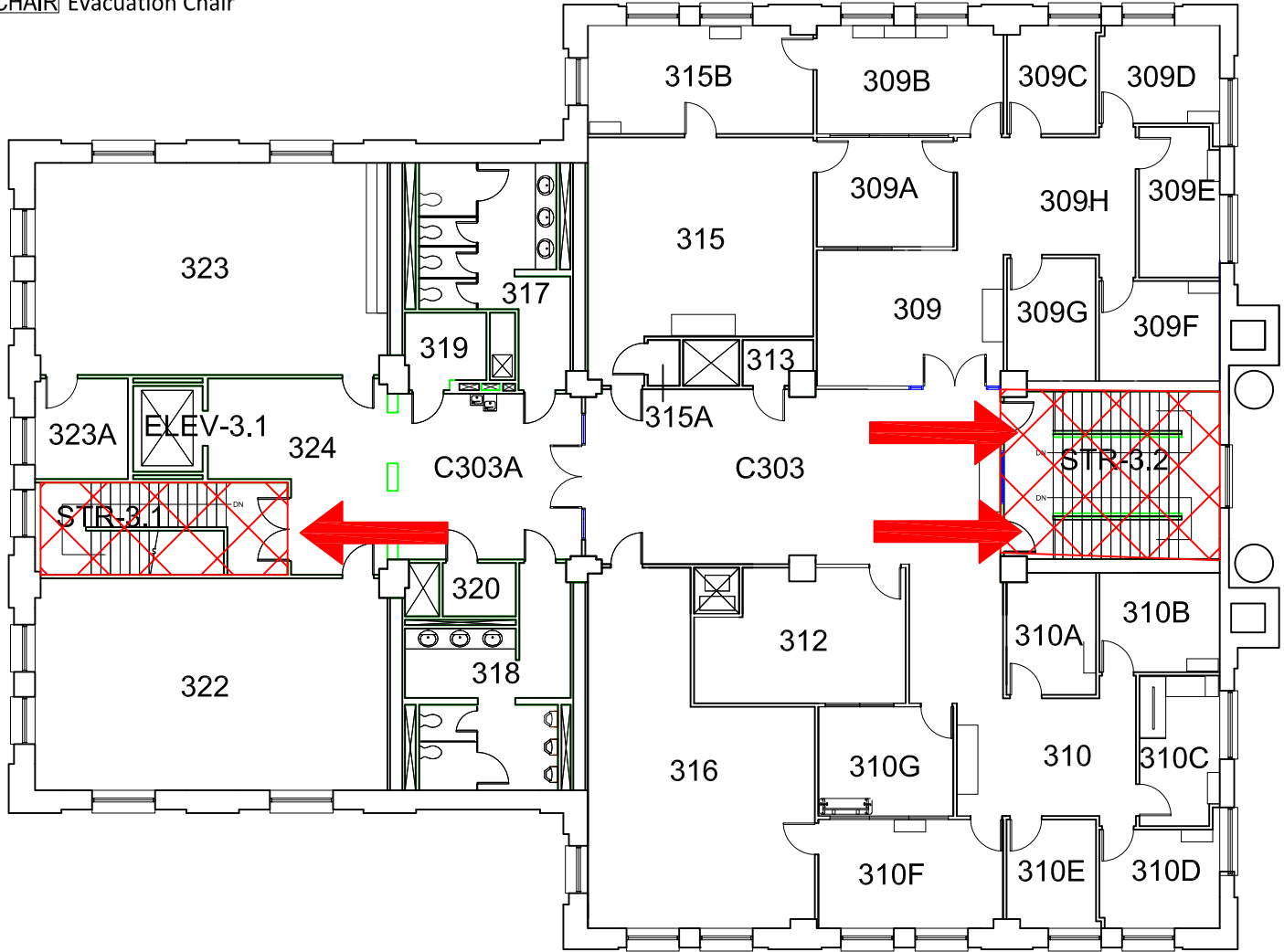
 Tornado Shelter Areas

 Exit/Evacuation Routes  
*In case of fire, do not use elevator*

 AED Automatic External Defibrillator

 CHAIR Evacuation Chair

Exterior Gross Area  
9040



## THIRD FLOOR PLAN

