

# Building Emergency Procedures

## Art Building

1201 Mulberry St. Denton, TX 76201

### Severe Weather

In the event of severe weather, all building occupants should immediately seek shelter in the designated shelter-in-place area in the building. If unable to safely move to the designated shelter-in-place area, seek shelter in a windowless interior room or hallway on the lowest floor of the building you have access to.

**All building occupants should take shelter in the interior hallways on the 1<sup>st</sup> and 2<sup>nd</sup> floors. See following floorplan for designated recommended shelter areas.**


### Bomb Threat/Fire


In the event of a bomb threat or fire in the building, all building occupants should immediately evacuate the building using the nearest exit. Once outside, proceed to the designated assembly area. If unable to safely move to the designated assembly area, contact one or more members of your department or unit to let them know you are safe and inform them of your whereabouts.


**All building occupants should immediately evacuate the building and proceed to the church parking lot across Mulberry Street or to the Physics Building.**




Safety Legend

 Areas of Refuge

 Tornado Shelter Areas

 Exit/Evacuation Routes  
*In case of fire, do not use elevator*

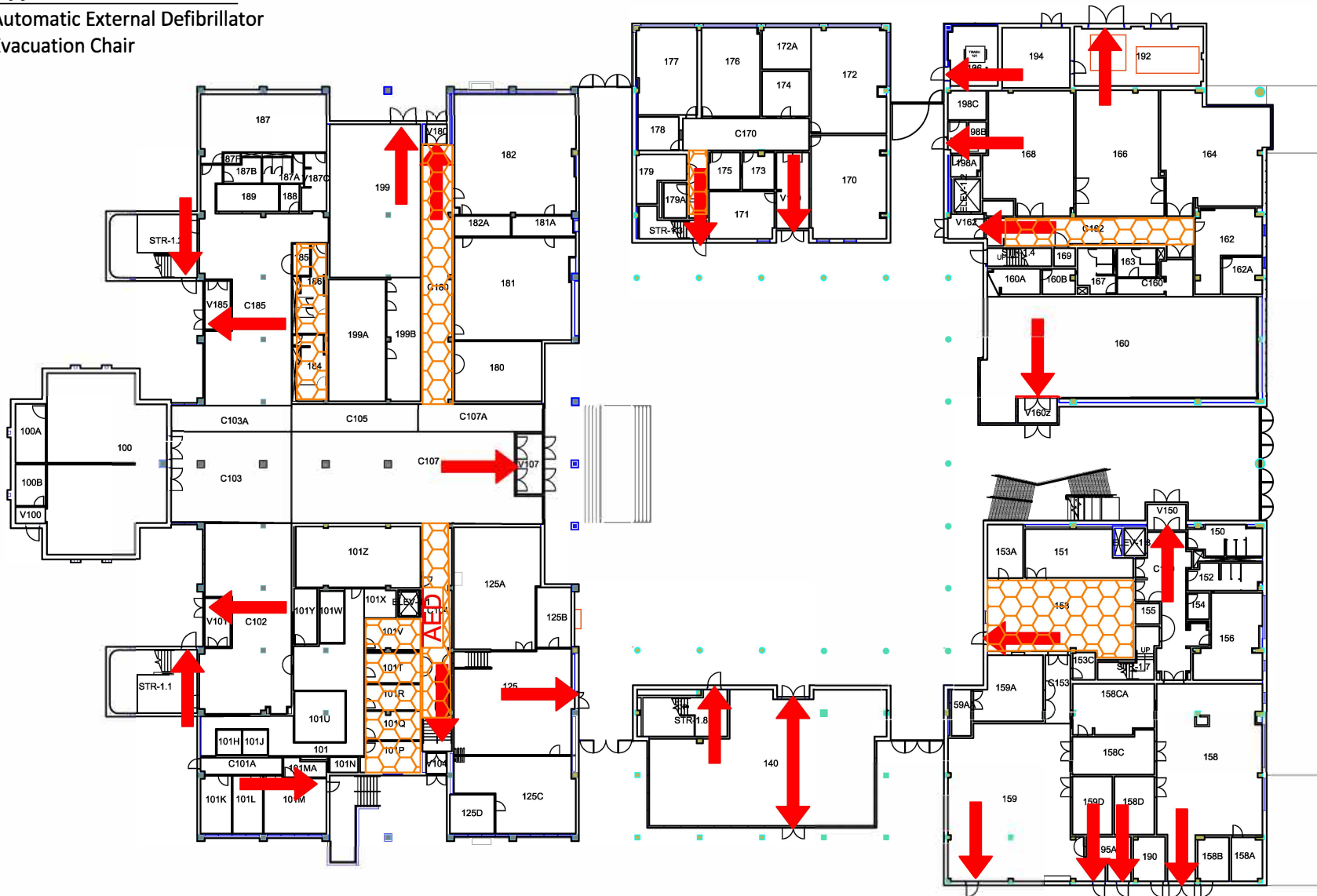
 AED Automatic External Defibrillator

 CHAIR Evacuation Chair

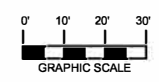
# ART BUILDING

BLDG #0153  
03-2019

Exterior Gross Area  
60162



## FIRST FLOOR PLAN





ART BUILDING  
BLDG #0153  
03-2018


Exterior Gross Area  
68693



Safety Legend


 Areas of Refuge

 Tornado Shelter Areas

 Exit/Evacuation Routes

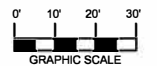
*In case of fire, do not use elevator*

 Automatic External Defibrillator




 Evacuation Chair



SECOND FLOOR PLAN



Safety Legend

-  Areas of Refuge
  -  Tornado Shelter Areas
  -  Exit/Evacuation Routes
- In case of fire, do not use elevator*

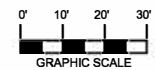
# ART BUILDING

BLDG #0153  
03-2018

Exterior Gross Area  
69334



## THIRD FLOOR PLAN






# ART BUILDING

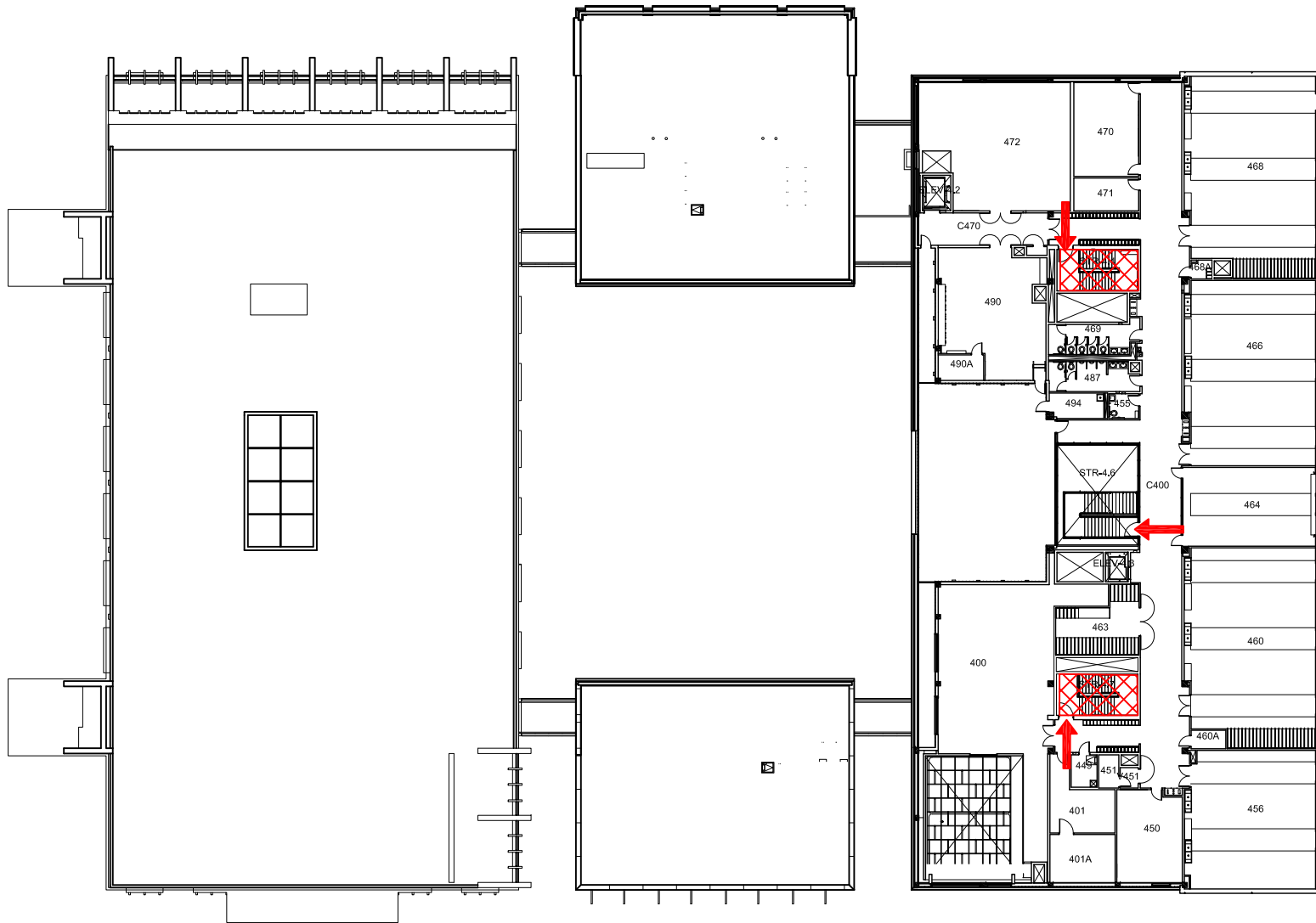
BLDG #0153  
03-2018

Exterior Gross Area  
24978

## Safety Legend

-  Areas of Refuge
-  Tornado Shelter Areas

 Exit/Evacuation Routes  
*In case of fire, do not use elevator*



**FOURTH FLOOR PLAN**

