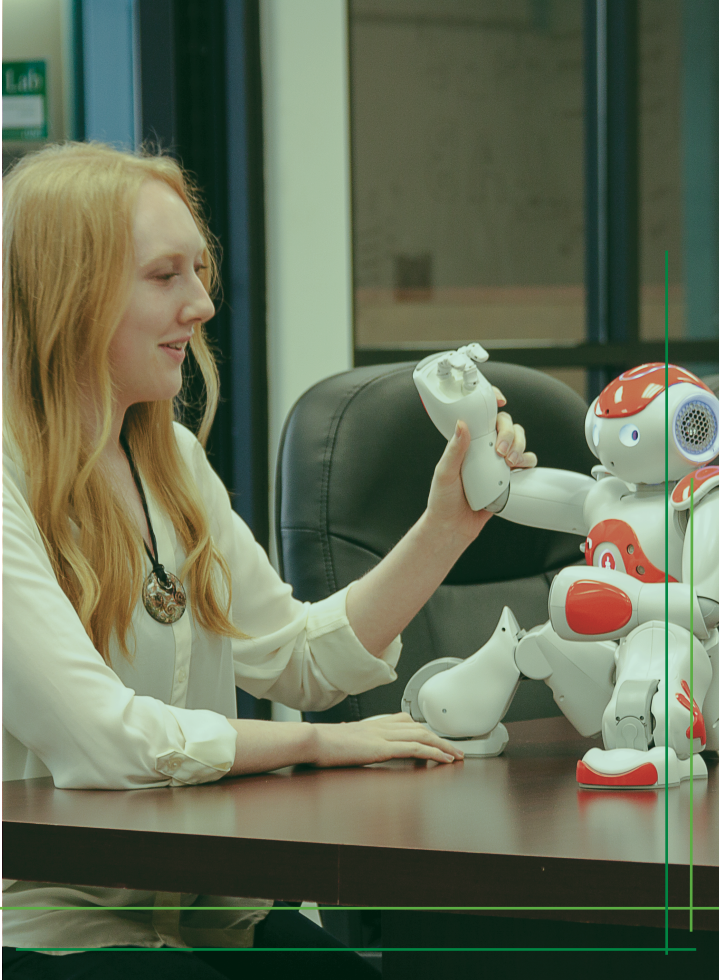


Tomorrow's innovations through
today's research and education



Computer Science and Engineering

Computer Science and Engineering, Ph.D.

Computer Engineering, M.S.

Computer Science, M.S.



NOW ACCEPTING APPLICATIONS

Major Research Areas

- + Algorithms and Computational Science
- + Computer Security
- + Computer Systems and Networks
- + Data Science and Intelligent Systems
- + Software Engineering

Centers

- + Computational Epidemiology and Response Analysis
- + Center for Information and Cyber Security
- + Net-Centric & Cloud Software & Systems (NCSS) Industry/University Cooperative Research Center (I/UCRC)

Funding

- + Teaching and Research assistantships are available
- + All Teaching and Research assistants receive a monthly stipend and in-state tuition; many also receive 3-9 hours of tuition and mandatory fee funding
- + Hourly grader positions and other on-campus employment positions are available
- + Scholarships are available

Admissions

Typically, successful applicants will meet the following admission requirements:

- | | |
|-----------------------------|-----------------------------|
| + M.S. Requirements | + Ph.D. Requirements |
| GPA: 3.0 in prior work | GPA: 3.5 in prior work |
| GRE Verbal: 148 | GRE Verbal: 151 |
| GRE Quantitative: 155 | GRE Quantitative: 156 |
| GRE Analytical Writing: 3.5 | GRE Analytical Writing: 4.5 |

+ Contact Melanie.Dewey@unt.edu

+ Find all admissions information by visiting engineering.unt.edu/admissions