

GENERAL PURPOSE ANSWER SHEET

form no. 16485

IMPORTANT MARKING INSTRUCTIONS

- Use black lead (No. 2) pencil. Do not use ink pens.
- Make heavy black marks that fill the circle completely.
- Erase clearly any answer you wish to change.
- Make no stray marks on this answer sheet.
- For each question; T = True, F = False. If that does not pertain, use A through E.

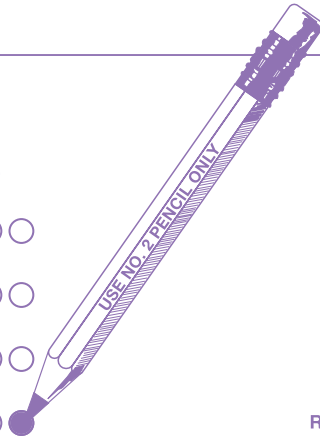
EXAMPLE

WRONG
1 T

WRONG
2 T F

WRONG
3 T F

RIGHT
4 T F



Reorder Form No. 16485 800-722-6876 www.ScanttronStore.com



1	A B C D E	11	A B C D E	21	A B C D E	31	A B C D E	41	A B C D E	51	A B C D E
2	T F <input type="radio"/> <input type="radio"/> <input type="radio"/>	12	A B C D E	22	A B C D E	32	A B C D E	42	A B C D E	52	A B C D E
3	A B C D E	13	A B C D E	23	A B C D E	33	A B C D E	43	A B C D E	53	A B C D E
4	T F <input type="radio"/> <input type="radio"/> <input type="radio"/>	14	A B C D E	24	A B C D E	34	A B C D E	44	A B C D E	54	A B C D E
5	A B C D E	15	A B C D E	25	A B C D E	35	A B C D E	45	A B C D E	55	A B C D E
6	T F <input type="radio"/> <input type="radio"/> <input type="radio"/>	16	A B C D E	26	A B C D E	36	A B C D E	46	A B C D E	56	A B C D E
7	A B C D E	17	A B C D E	27	A B C D E	37	A B C D E	47	A B C D E	57	A B C D E
8	T F <input type="radio"/> <input type="radio"/> <input type="radio"/>	18	A B C D E	28	A B C D E	38	A B C D E	48	A B C D E	58	A B C D E
9	A B C D E	19	A B C D E	29	A B C D E	39	A B C D E	49	A B C D E	59	A B C D E
10	T F <input type="radio"/> <input type="radio"/> <input type="radio"/>	20	A B C D E	30	A B C D E	40	A B C D E	50	A B C D E	60	A B C D E

61	A B C D E	71	A B C D E	81	A B C D E	91	A B C D E	101	A B C D E	111	A B C D E
62	T F <input type="radio"/> <input type="radio"/> <input type="radio"/>	72	A B C D E	82	A B C D E	92	A B C D E	102	A B C D E	112	A B C D E
63	A B C D E	73	A B C D E	83	A B C D E	93	A B C D E	103	A B C D E	113	A B C D E
64	T F <input type="radio"/> <input type="radio"/> <input type="radio"/>	74	A B C D E	84	A B C D E	94	A B C D E	104	A B C D E	114	A B C D E
65	A B C D E	75	A B C D E	85	A B C D E	95	A B C D E	105	A B C D E	115	A B C D E
66	T F <input type="radio"/> <input type="radio"/> <input type="radio"/>	76	A B C D E	86	A B C D E	96	A B C D E	106	A B C D E	116	A B C D E
67	A B C D E	77	A B C D E	87	A B C D E	97	A B C D E	107	A B C D E	117	A B C D E
68	T F <input type="radio"/> <input type="radio"/> <input type="radio"/>	78	A B C D E	88	A B C D E	98	A B C D E	108	A B C D E	118	A B C D E
69	A B C D E	79	A B C D E	89	A B C D E	99	A B C D E	109	A B C D E	119	A B C D E
70	T F <input type="radio"/> <input type="radio"/> <input type="radio"/>	80	A B C D E	90	A B C D E	100	A B C D E	110	A B C D E	120	A B C D E

OVER →

