



[CITC Home](#)

[Help Desk](#)

[Training](#)

[About Us](#)

[Publications](#)

[Our Mission](#)

Volume 12 - Number 7 * July 2009

Columns

[NetworkConnection](#)

[Link of the Month](#)

[Helpdesk FYI](#)

[IRC News](#)

[RSS Matters](#)

[Short Courses](#)

[Staff Activities](#)



Welcome Incoming Freshmen and Transfer Students!

By the Numbers

[UNT HPC Cluster](#)

224 compute nodes
1792 processor cores
7168GB of total node RAM
320TB of total node disk space
32 large-memory nodes with 64GB of RAM

64 medium-memory nodes with 32GB of RAM
128 small-memory nodes with 24GB of RAM
200TB of attached high-performance disk storage

 [About Benchmarks](#)

 [Search Archive](#)

 [Subscribe to Benchmarks](#)

Campus Computing News

[UNT Installing a new High Performance Computing Cluster](#)

[Gartner Research Services](#)

[Bits -nBytes](#)

[Summer Hours](#)

[Denver in November: EDUCAUSE 2009](#)

TODAY'S CARTOON

[Don't forget our monthly columns!](#)

 BOOKMARK 



You can follow *Benchmarks Online* on [Twitter!](#)

[Return to top](#)

UNIVERSITY OF NORTH TEXAS™

[Network Connection](#) | [Link of the Month](#) | [IRC News](#) | [RSS Matters](#) | [Helpdesk FYI](#) | [Short Courses](#) | [Staff Activities](#)

[Computing and Information Technology Center Home](#) | [Help Desk](#) | [Training](#) | [About Us](#) | [Publications](#) | [Our Mission](#)

Available for RSS/XML syndication. See the [list of all available xml/rss feeds](#).

Questions, comments and corrections for this site: lynch@unt.edu

Site was last updated or revised : July 20, 2009

Originally published, July 2009 -- Please note that information published in *Benchmarks Online* is likely to degrade over time, especially links to various Websites. To make sure you have the most current information on a specific topic, it may be best to search the UNT Website - <http://www.unt.edu> . You can also search *Benchmarks Online* - <http://www.unt.edu/benchmarks/archives/back.htm> as well as consult the UNT Helpdesk - <http://www.unt.edu/helpdesk/> Questions and comments should be directed to benchmarks@unt.edu

[UNT home page](#) | [Search UNT](#) | [UNT news](#) | [UNT events](#)

[Page One](#)
[Campus Computing News](#)
[Gartner Research Services](#)
[Bits -n- Bytes](#)
[Summer Hours](#)
[Denver in November: EDUCAUSE 2009](#)
[Today's Cartoon](#)
[RSS Matters](#)
[The Network Connection](#)
[Link of the Month](#)
[Helpdesk FYI](#)
[Short Courses](#)
[IRC News](#)
[Staff Activities](#)
[Subscribe to Benchmarks Online](#)

Campus Computing News

UNT Installing a new High Performance Computing Cluster

By [Dr. Philip Baczewski](#), Director of Academic Computing and User Services

The CITC's Academic Computing and User Services will soon take delivery of the largest [computing system](#) ever installed on the UNT campus. The computing system may be among the most powerful in the world and will bring to UNT the capability of performing large-scale computing tasks that are required by many areas of scientific and engineering research being done today.

What is a high performance computing cluster?

A high performance computing ([HPC](#)) cluster is a set of individual servers which can work together, combining their individual resources, in order to run large-scale computation programs. Academic Computing is not new to [HPC cluster management](#). In 2001, ACUS staff assembled a modest 8-node cluster and over the intervening years has upgraded resources to take advantage of new developments in processor and networking technology. This new HPC acquisition, however, represents a quantum leap in the cluster resources that are managed centrally and potentially available to all researchers on campus. The new cluster will provide 10 times more processing power than what ACUS can currently offer.

The HPC cluster purchase was made possible through funding support from the offices of the Vice President for Research and Economic Development and the Vice President for Finance and Administration. A committee of faculty researchers helped determine the specifications for the cluster acquisition and Dell was chosen as the vendor to supply the cluster equipment.

Cluster configuration and installation

As configured, the HPC cluster will consist of 224^{*} individual Dell R410 servers (called nodes), each with two quad-core Intel X5550 (Nehalem) processors running at 2.66GHz (with performance levels up to about 3 GHz in "turbo" mode). This number of CPUs provides a total of 1792 processor cores, each of which can work independently to run all or part of a computer program. All nodes are interconnected by a high-speed [Infiniband](#) network which allows a set of nodes running a single program in parallel execution to share data and items held in memory at a very high level of efficiency.

Three kinds of node configurations are included within the cluster:

- 32 large-memory nodes with 64GB of RAM and 2TB of disk space;

- 64 medium-memory nodes with 32GB of RAM and 2TB of disk space;
- 128 small-memory nodes with 24GB of RAM and 1TB of disk space.

Large and medium-memory sized nodes will be useful for running individual programs which require resources to support manipulation of large data sets in memory. The “small-memory”-sized nodes will be available for individual (serial) execution of programs as well as the parallel execution of a single program where some of the computation is done on each of the nodes. The entire cluster will have the ability to act as a single very-large parallel processing system if a job is large enough to require it.

Another aspect to high-performance computing is the need to generate or analyze large amounts of data. In order to accommodate researchers' use of large data sets, the HPC cluster will be attached to 200TB of high-performance disk storage. This storage system, manufactured by Data Direct Networks ([DDN](#)), will allow programs running on the cluster to read or write extremely large amounts of data at access speeds that won't slow down the rate at which the program can execute.

In order to accommodate the new HPC system, the CITC machine room on the UNT campus has undergone upgrades to its power and cooling capacity. The HPC cluster will have a dedicated cooling system and it and other computers in the machine room will be protected by a newly-expanded uninterruptible power supply (UPS) system and a diesel-powered generator to provide electricity in the event of a loss of City of Denton power.

Installation of the cluster will begin at the start of August and the cluster will be made available to researchers during the Fall semester of 2009. Acquisition of this new computing resource represents one part of UNT's effort to expand research activity in the areas of math, sciences, and engineering. Academic Computing and User Services is excited to be able to support such a significant new service for the research community at UNT.

* See [“By the Numbers”](#) in this issue for a complete breakdown of the cluster resources.



Please Note: The University of North Texas will never ask for personal information by e-mail. If you receive an e-mail purporting to be from the University that asks for personal information or account passwords, do not respond. If there is any question regarding the authenticity of an email, please contact UNT Information Security at (940) 369-7800.



Originally published, July 2009 -- Please note that information published in *Benchmarks Online* is likely to degrade over time, especially links to various Websites. To make sure you have the most current information on a specific topic, it may be best to search the UNT Website - <http://www.unt.edu> . You can also search *Benchmarks Online* - <http://www.unt.edu/benchmarks/archives/back.htm> as well as consult the UNT Helpdesk -

<http://www.unt.edu/helpdesk/> Questions and comments should be directed to benchmarks@unt.edu

[Return to top](#)

[Skip Navigation Links](#)

[Page One](#)

[Campus Computing News](#)

Gartner Research Services

[Bits -n- Bytes](#)

[Summer Hours](#)

[Denver in November: EDUCAUSE 2009](#)

[Today's Cartoon](#)

[RSS Matters](#)

[The Network Connection](#)

[Link of the Month](#)

[Helpdesk FYI](#)

[Short Courses](#)

[IRC News](#)

[Staff Activities](#)

[Subscribe to Benchmarks Online](#)

Gartner

Gartner Research Services

By [Claudia Lynch](#), *Benchmarks Online* Editor

Way back in 2006 we announced [Gartner Core Research Services Now Available to the UNT Community](#). Our subscription for Gartner services has always included *all* UNT faculty, students, and staff. All you need to do to access the subscription is to log into the UNT Gartner portal page at <https://gartner.unt.edu/>.

Direct Access

CITC began sponsoring direct access to Gartner researchers in [2007](#). As Tom McElwee stated at the time, "we can now conference directly with Gartner researchers on specific topics for thirty minute technical discussions. Having direct access to a researcher may provide information not addressed in the published reports and surface new developments since the last publishing."

To schedule a session, send [Mr. McElwee](#) an email message with the specific topic from the Gartner website so that he can request access to a researcher. Gartner will respond with several times the researcher is available and then a time can be selected to schedule the call.

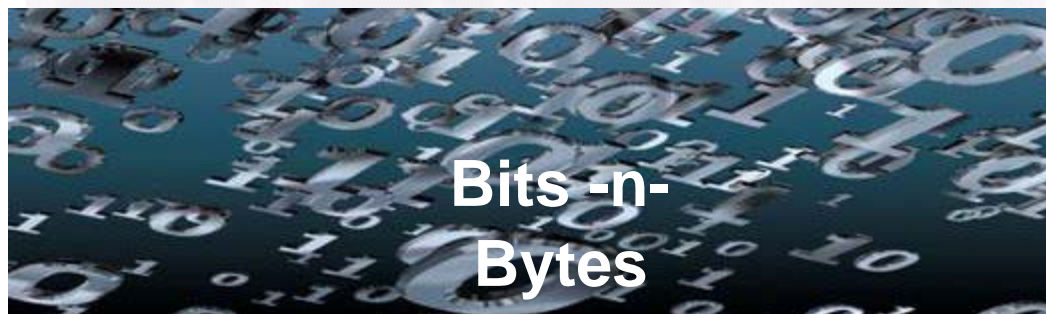
Other Services

Gartner is now offering "Webinar Wednesdays." To view all the offerings see: <http://my.gartner.com/portal/server.pt?tb=webinarcalendar> You can also listen to Gartner podcasts here: http://www.gartner.com/it/products/podcasting/asset_137461_2616.jsp.

 BOOKMARK    ...

Originally published, July 2009 -- Please note that information published in *Benchmarks Online* is likely to degrade over time, especially links to various Websites. To make sure you have the most current information on a specific topic, it may be best to search the UNT Website - <http://www.unt.edu> . You can also search *Benchmarks Online* - <http://www.unt.edu/benchmarks/archives/back.htm> as well as consult the UNT Helpdesk - <http://www.unt.edu/helpdesk/>. Questions and comments should be directed to benchmarks@unt.edu

[Return to top](#)

[Page One](#)
[Campus Computing News](#)
[Gartner Research Services](#)
[Bits -n- Bytes](#)
[Summer Hours](#)
[Denver in November: EDUCAUSE 2009](#)
[Today's Cartoon](#)
[RSS Matters](#)
[The Network Connection](#)
[Link of the Month](#)
[Helpdesk FYI](#)
[Short Courses](#)
[IRC News](#)
[Staff Activities](#)
[Subscribe to Benchmarks Online](#)


By [Claudia Lynch](#), *Benchmarks Online* Editor

Listed below are some things we've published within the last six months but warrant a reminder: Just in case you forgot or missed it the first time around:

Faculty and Staff

- **SharePoint and UNTranet** - According to [this article](#), Microsoft SharePoint is a browser-based product that facilitates the sharing of files, calendars, tasks, and other information. CITC's SharePoint system is dubbed "UNTranet" ("UHN-truh-net") and all UNT faculty, staff, and hourly employees should have access to the "UNTranet Portal" at <http://untranet.unt.edu>.
- **CITC Portfolio and Project Management** - The CITC has instituted a more formal approach to managing IT projects that is in compliance with Texas Administrative Code (TAC), [chapter 216](#). Keep reading [here](#) for more information on this topic.
- **UNT Deploys New Encryption Product** - If you are interested in encrypting your desktop or laptop machine [read on ...](#)
- **The Microsoft Home Use Program** - "Home Use" enables those who are eligible to download and install Microsoft® Office software at a reduced price on their home computers. Keep reading [here](#) for more information on this topic.

Students

- **What the New Students are Learning about Computing this Summer** - Details [within](#).
- **What to Buy Your New or Returning UNT Student This Year** - If this piques your interest, keep reading [here](#).

EagleConnect

- **EagleConnect for Alumni and Retirees** - UNT alumni and retired employees can now request an account on the new EagleConnect system. The EagleConnect system is a communications suite that includes Outlook Web Access, SkyDrive file storage, and more. [Read all about it!](#)
- **Configuring your Mail client to check EagleConnect** - EagleConnect supports both IMAP and POP3 accounts. For most IMAP or POP3 devices the settings set forth [here](#) should work.
- **Creating an Appointment in EagleConnect** - Another "how to" article from the CITC Helpdesk. Click [here](#) for detailed instructions.
- **EagleConnect Redirect** - it is fairly simple to redirect or forward your email to other accounts. [Read all about it!](#)

Research

- **UNT Library Electronic Resources: There When You Need Them!** - Check out these [search instructions](#) for the UNT Libraries' electronic resources.
- **Free your research: Open source and other alternatives to cut your costs and improve productivity as a graduate student** - If that sounds good to you, click [here](#) and keep reading.
- **Data Mining Options for the UNT Community** - There are several data mining options available to the UNT research community that, depending on your classification (full-time faculty, academic, etc.), might be a good fit for your data mining needs. If you're interested, click [here](#) and keep reading.
- **Introducing AMOS 17 and SPSS 17** - New software, [read all about it!](#)

Green Computing

- **UNT Computing Goes Green!** - Click [here](#) to read about all the ways UNT computing is going green.
- **How Green is Our Learning?** - Find out [here](#).



Originally published, July 2008 -- Please note that information published in *Benchmarks Online* is likely to degrade over time, especially links to various Websites. To make sure you have the most current information on a specific topic, it may be best to search the UNT Website - <http://www.unt.edu> . You can also search *Benchmarks Online* - <http://www.unt.edu/benchmarks/archives/back.htm> as well as consult the UNT Helpdesk - <http://www.unt.edu/helpdesk/> Questions and comments should be directed to benchmarks@unt.edu

[Return to top](#)

[Page One](#)
[Campus Computing News](#)
[Gartner Research Services](#)
[Bits -n- Bytes](#)
[Summer Hours](#)
[Denver in November: EDUCAUSE 2009](#)
[Today's Cartoon](#)
[RSS Matters](#)
[The Network Connection](#)
[Link of the Month](#)
[Helpdesk FYI](#)
[WWW@UNT.EDU](#)
[Short Courses](#)
[IRC News](#)
[Staff Activities](#)
[Subscribe to Benchmarks Online](#)

Summer Hours

By [Claudia Lynch](#), *Benchmarks Online* Editor

Summer is officially here and summer classes continue. [SUM, 3WK1, 8WK1](#) classes* began on May 18. Following are the hours for Computing and Information Technology Center-managed facilities during this time period and, in some cases, the summer. The [Helpdesk](#) plans, at this point, to be open their normal hours.

- [Data Management Services](#) will maintain their normal schedule throughout the summer.
- The [ACS General Access/Adaptive Lab \(ISB 110\)](#):

Sunday: 1- 10 p.m.

Monday - Thursday: 8 a.m. - 10 p.m.

Friday: 8 a.m. - 9 p.m.

Saturday: 10 a.m. - 9 p.m.

Hours for Other Campus Facilities

General Access Labs

- [WILLIS](#):
Will maintain a 24hr schedule.
- [College of Information GACL](#) (B205 GACL, formerly SLIS):

May 18 - August 14:

Monday - Friday: 10 a.m. - 6 p.m.

Saturday: **Closed**

Sunday: **Closed**

- [MUSIC](#):

May 18 - August 14:

Monday-Thursday: 8 a.m.-9 p.m.

Friday: 8 a.m.-5 p.m.

Saturday: 10 a.m.-5 p.m.

Sunday: 1-8 p.m.

- [PACS Computing Center](#) (Chilton Hall):

May 18 - August 13:

Monday - Thursday: 8 a.m. - 10 p.m.

Friday & Saturday: 8 a.m. – 5 p.m.
Sunday: Noon – 10 p.m.

Special Closings:

Semester Break: August 14 - 23

- **CVAD** (formerly SOVA) Art Building 232
(940)565-2470:

Hours currently unavailable.

- [COE](#):

May 18 - August 14:

Monday- Thursday: 7 a.m.-Midnight

Friday: 7 a.m.-5 p.m.

Saturday: Noon-8 p.m.

Sunday: **Closed**

- [COBA](#):

May 18 - August 14:

Monday - Thursday: 8 a.m. - 11:50 p.m.

Friday - Saturday: 8 a.m. - 7:50 p.m.

Sunday: Noon - 11:50 p.m.

- [CAS](#):

GAB 330

June 8 - August 14:

Monday - Thursday: 8 a.m. - Midnight

Friday: 8 a.m. - 5 p.m.

Saturday: Noon - 8 p.m.

Sunday: Noon - Midnight

Special Closings:

Semester Break: August 15 - 23

GAB 550 - Closed all summer

Terrill 220

June 8 - August 14:

Monday - Thursday: 8 a.m. - 8 p.m.

Friday: 8 a.m. - 5 p.m.

Saturday: **Closed**

Sunday: **Closed**

Special Closings:

Semester Break: August 15 - 23

Wooten 120

June 8 - August 14:

Monday - Thursday: 8 a.m. - 10 p.m.

Friday: 8 a.m. - 5 p.m.

Saturday: **Closed**

Sunday: **Closed**

Special Closings:

Semester Break: August 15 - 23

- UNT [Dallas Campus](#) - 155A

May 18 - August 14:

Monday - Thursday: 7 a.m. - 10 p.m.

Friday: 7 a.m. - 6 p.m.

Saturday: 8 a.m. - 5 p.m.

Sunday: **Closed**

- [Engineering](#) General Access Lab (englab@unt.edu, Discovery Park, B129, 891-6733)

May 18 - August 14:

Monday - Friday: 9 a.m. - 5 p.m.

Saturday: **Closed**

Sunday: **Closed**

* Terminology and schedules for classes offered in the summer has changed in recent years:

SUMmer=Entire Summer Session, 3WK1 = 3-week 1, 8WK1=8-week 1, 5WK1= 5-week 1, 10WK1= 10-week, 5WK2= 5-week 2. All summer sessions will be over by August 14 [this year](#).

- Summer Session 3W1: formerly May Minimester
- Summer Session 5W1: formerly Summer I
- Summer Session 5W2: formerly Summer II.

Remember:



[Get your alerts fast](#)
[in case of inclement weather](#)

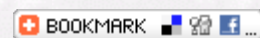
Visit the new Emergency Management [website](#)

City of Denton Residents, [sign up](#) for the
CodeRED Emergency Notification System

Stay informed!

Faculty/Staff Announcements

announce.unt.edu



Originally published, July 2009 -- Please note that information published in *Benchmarks Online* is likely to degrade over time, especially links to various Websites. To make sure you have the most current information on a specific topic, it may be best to search the UNT Website - <http://www.unt.edu> . You can also search **Benchmarks Online** - <http://www.unt.edu/benchmarks/archives/back.htm> as well as consult the UNT Helpdesk - <http://www.unt.edu/helpdesk/> Questions and comments should be directed to benchmarks@unt.edu

[Return to top](#)

[Page One](#)

[Campus Computing News](#)

[Gartner Research Services](#)

[Bits -n- Bytes](#)

[Summer Hours](#)

[Denver in November: EDUCAUSE 2009](#)

[Today's Cartoon](#)

[RSS Matters](#)

[The Network Connection](#)

[Link of the Month](#)

[Helpdesk FYI](#)

[Short Courses](#)

[IRC News](#)

[Staff Activities](#)

[Subscribe to Benchmarks Online](#)



Denver in November: EDUCAUSE 2009

By [Claudia Lynch](#), *Benchmarks Online* Editor

EDUCAUSE is in Denver, Colorado this year and all indications are that it is going to be a great conference. The dates are November 3–6 and early registration is already underway. The information below was gleaned from various EDUCAUSE e-mail messages and websites and is reproduced here in the hope that it can help you decide whether or not you wish to attend the conference.

What's new this year?



Off-Site Tours

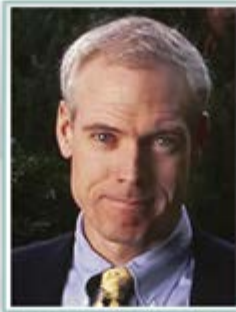
On Tuesday, November 3, three of the [preconference seminars](#) will take you off-site to tour the [National Center for Atmospheric Research](#), the [National Oceanic and Atmospheric Administration](#), and [Sun Microsystems and CU Boulder](#). Enjoy a brand new format for learning and networking.

General Session Speakers



Lawrence Lessig

Professor of Law
Stanford Law School



Jim Collins

Author of *Good to Great* and
Co-Author of *Built to Last*



Brenda Gourley

Professor and Emeritus
Vice-Chancellor and President
The Open University, UK

Social Media

Create some preconference buzz! Contribute to the EDUCAUSE 2009 Twitter stream by tagging your tweets with #EDUCAUSE09 or blog your thoughts about the conference with the tag EDUCAUSE09.

More information and registration

[EDUCAUSE Now](#) -- Show #17 includes "a small peek at just two of the multitude of presentations you'll find at the conference: one is a conference tradition and the other an emerging trend." Visit the [EDUCAUSE 2009 website](#) to register and find out more about the conference.



Originally published, July 2009 -- Please note that information published in *Benchmarks Online* is likely to degrade over time, especially links to various Websites. To make sure you have the most current information on a specific topic, it may be best to search the UNT Website - <http://www.unt.edu> . You can also search *Benchmarks Online* - <http://www.unt.edu/benchmarks/archives/back.htm> as well as consult the UNT Helpdesk - <http://www.unt.edu/helpdesk/>. Questions and comments should be directed to benchmarks@unt.edu

[Return to top](#)

[Skip Navigation Links](#)

[Page One](#)

[Campus Computing News](#)

[Gartner Research Services](#)

[Bits -n- Bytes](#)

[Summer Hours](#)

[Denver in November: EDUCAUSE 2009](#)

[Today's Cartoon](#)

[RSS Matters](#)

[The Network Connection](#)

[Link of the Month](#)

[Helpdesk FYI](#)

[Short Courses](#)

[IRC News](#)

[Staff Activities](#)

[Subscribe to Benchmarks Online](#)

maincontent

Today's Cartoon

© Randy Glasbergen
www.glasbergen.com



“It’s a cell phone, camera, and music player. If you set the ringer to ‘vibrate’ and stick it in your sock, it’s also a foot massager.”

From "Today's Cartoon by Randy Glasbergen", posted with special permission. For many more cartoons, please visit www.glasbergen.com.

[BOOKMARK](#)

Originally published, July 2009 -- Please note that information published in *Benchmarks Online* is likely to degrade over time, especially links to various Websites. To make sure you have the most current information on a specific topic, it may be best to search the UNT Website - <http://www.unt.edu> . You can also search *Benchmarks Online* - <http://www.unt.edu/benchmarks/archives/back.htm> as well as consult the UNT Helpdesk - <http://www.unt.edu/helpdesk/> Questions and comments should be directed to benchmarks@unt.edu

[Return to top](#)

[Page One](#)

[Campus Computing News](#)

[Gartner Research Services](#)

[Bits -n- Bytes](#)

[Summer Hours](#)

[Denver in November: EDUCAUSE 2009](#)

[Today's Cartoon](#)

[RSS Matters](#)

[The Network Connection](#)

[Link of the Month](#)

[Helpdesk FYI](#)

[Short Courses](#)

[IRC News](#)

[Staff Activities](#)

[Subscribe to Benchmarks Online](#)

Don't Forget Our Monthly Columns!

By [Claudia Lynch](#), *Benchmarks Online* Editor

In addition to our feature articles, *Benchmarks Online* publishes monthly columns that are focused on specific aspects of computing here at UNT (and beyond, in some cases). Check out what is waiting for you this month:

- [By the Numbers](#) - Not really a column, rather a feature, giving you a glimpse behind the scenes of the volumes of data, spam, etc. processed, managed, and otherwise handled here at UNT.
- [RSS Matters](#) - "RSS Matters" is the monthly column written by the Research and Statistical Support [Group](#) in Academic Computing Services. Their articles focus on topics of a statistical and/or research methods nature. **This month Patrick McLeod announced SAS 9.2 For Windows. Read all about it!**
- [The Network Connection](#) - "The Network Connection" may well be the longest running column in computer publishing history. Certainly in University of North Texas computer [publishing history](#).
This month, Dr. Baczewski asks the timely question "What's in an Operating System?" Click on the Network Connection link for his answer. It might surprise you.
- [Link of the Month](#) - As it says on the top of the "Link of the Month" page, "Each month we highlight an online mailing list or website. Frequently the link is associated with UNT." **This month's link is "Student Blogs and UNTnews" Click on the link above and check it out!**
- [Helpdesk FYI](#) - A new monthly feature from the CITC Helpdesk. Each month they will tackle a topic that has been of particular interest to callers/visitors to the Helpdesk. **This month Jonathan "Mac" Edwards, talks about a "Windows Vista Wireless Issue." Click on the link above and read all about it.**
- [Short Courses](#) - Every semester, Academic Computing Services (ACS) offers short courses on computer-related topics, many of them having to do with statistical research. This column keeps you up-to-date on what is being offered and when as well as other training opportunities.

Short courses have been scheduled and, in fact, are almost

over. Classes in R, S-Plus and New Technologies for Survey Research remain.

Need some research/statistical training? *Special classes* can always be arranged with the RSS staff, and they are always available for consultation. **Click on the Short Courses link above for information about classes likely to be offered next semester and/or other training resources.**

- [IRC News](#) - As their Webpage [says](#), "the IRC is an advisory and oversight body created to foster communication and cooperation between and among UNT information resources providers and users." We publish the minutes of the IRC meetings each month, when they are available. **The minutes for Tuesday, April 21, 2009 were published this month.**
- [Staff Activities](#) - This column focuses on new employees, people who are no longer employed at the Computing and Information Technology Center, awards and recognitions and other items of interest are featured here.



Originally published, July 2009 -- Please note that information published in *Benchmarks Online* is likely to degrade over time, especially links to various Websites. To make sure you have the most current information on a specific topic, it may be best to search the UNT Website - <http://www.unt.edu> . You can also search *Benchmarks Online* - <http://www.unt.edu/benchmarks/archives/back.htm> as well as consult the UNT Helpdesk - <http://www.unt.edu/helpdesk/> Questions and comments should be directed to benchmarks@unt.edu

[Return to top](#)

[Page One](#)
[Campus Computing News](#)
[Gartner Research Services](#)
[Bits -n- Bytes](#)
[Summer Hours](#)
[Denver in November: EDUCAUSE 2009](#)
[Today's Cartoon](#)
[RSS Matters](#)
[The Network Connection](#)
[Link of the Month](#)
[Helpdesk FYI](#)
[Short Courses](#)
[IRC News](#)
[Staff Activities](#)
[Subscribe to Benchmarks Online](#)

Network Connection

By [Dr. Philip Baczewski](#), Director of Academic Computing and User Services

What's in an Operating System?

Pretty much every computer has one. The [Operating System](#) or OS has been an integral part of computers almost since there were computers. It's the OS that allows a computer to be a general tool rather than an appliance that can only perform one function. It's the OS that supports running the different programs that allow you to perform a bunch of different tasks with your computer.

So when Google, the folks that didn't invent the Internet but did make it a bunch more useful, [announced](#) that they were developing their own operating system named Chrome OS (named in parallel with their previously released Chrome [browser](#)), that was undoubtedly a big deal, right? Well, maybe. You'd think it was by [reading](#) the IT trade press. There were reasons why Chrome OS would succeed and reasons why it would fail, and most amusingly why it would or wouldn't kill Windows. But Linux and Mac OS have yet to kill Windows, so it seems those that pit Chrome OS against Windows are probably the same ones that in elementary school would start to shout “fight – fight” in the school yard whenever two kids bumped into one another.

Cloud Computing

But Google's Chrome OS does raise some fundamental questions about computing the current and future expectations that we have for our personal computers. Google [states](#) that Chrome OS will be a “lightweight operating system that will initially be targeted at netbooks.” They go on to say that, “Google Chrome OS is being created for people who spend most of their time on the web, and is being designed to power computers ranging from small netbooks to full-size desktop systems.” What they are really saying is that if all of your computing resources are online, then you don't need an OS that has a bunch of overhead to support a whole lot of different programs. In other words, Chrome OS is built for computing in the [cloud](#).

If you read your mail on Gmail, and you store and edit and share your photos on Picasa, and get your entertainment from YouTube, then Chrome OS is for you. The stable of Google's online [services](#) just continues to grow, applying truth to [John Gage's](#) statement that, “the network is the computer.” So if the network is the computer, then what's the computer? The computer becomes just another network terminal, so you don't need all that OS overhead – just enough to use the network. Suddenly, your computer is faster and can be any number of devices, from a smart phone, to a netbook, to a desktop.

Google is betting that the network will be the computer and are in the driver's seat in regard

to cloud computing, partly because of some shrewd acquisitions (YouTube, etc.) and partly because their dominance in the Internet search arena naturally pulls people into their cloud. Google is the “Microsoft” of the “network is the computer” age, a fact that is apparently not lost on Microsoft since they are desperately hyping their own search engine ([bing](#)) after failing to [buy](#) Yahoo, AKA the next best thing to Google. Microsoft is also developing their own [cloud](#), so there's no need to worry or feel sorry for them.

Driving in the cloud

Will Chrome OS spell the death knell for Windows (or Mac OS X for that matter)? I don't think so. It may provide an additional tool for Internet denizens wanting to drive the information highway in something more akin to a [Prius](#) than a [Suburban](#). You can drive in the cloud, but be sure to get the fog lights.



Originally published, July 2009 -- Please note that information published in *Benchmarks Online* is likely to degrade over time, especially links to various Websites. To make sure you have the most current information on a specific topic, it may be best to search the UNT Website - <http://www.unt.edu> . You can also search **Benchmarks Online** - <http://www.unt.edu/benchmarks/archives/back.htm> as well as consult the UNT Helpdesk - <http://www.unt.edu/helpdesk/> Questions and comments should be directed to benchmarks@unt.edu

[Return to top](#)

[Skip Navigation Links](#)

[Page One](#)

[Campus Computing News](#)

[Gartner Research Services](#)

[Bits -n- Bytes](#)

[Summer Hours](#)

[Denver in November: EDUCAUSE 2009](#)

[Today's Cartoon](#)

[RSS Matters](#)

[The Network Connection](#)

Link of the Month

[Helpdesk FYI](#)

[Short Courses](#)

[IRC News](#)

[Staff Activities](#)

[Subscribe to Benchmarks Online](#)

Link of the Month

Each month we highlight an online website or mailing list. The link is usually associated with UNT.



Student Blogs and UNTnews

See college from the inside, follow student blogs at:

<http://www.unt.edu/vwbk/eablog.htm>

The above was announced by UNTnews via twitter. To follow UNTnews on Twitter, go to the link below and either login if you already have a twitter account or join (it's free): <http://twitter.com/UNTnews>

The UNTnews website is here: <http://web3.unt.edu/news/>

Originally published, July 2009 -- Please note that information published in *Benchmarks Online* is likely to degrade over time, especially links to various Websites. To make sure you have the most current information on a specific topic, it may be best to search the UNT Website - <http://www.unt.edu> . You can also search **Benchmarks Online** - <http://www.unt.edu/benchmarks/archives/back.htm> as well as consult the UNT Helpdesk - <http://www.unt.edu/helpdesk/> Questions and comments should be directed to benchmarks@unt.edu

[Return to top](#)

[Skip Navigation Links](#)

[Page One](#)

[Campus Computing News](#)

[Gartner Research Services](#)

[Bits -n- Bytes](#)

[Summer Hours](#)

[Denver in November: EDUCAUSE 2009](#)

[Today's Cartoon](#)

[RSS Matters](#)

[The Network Connection](#)

[Link of the Month](#)

Helpdesk FYI

[Short Courses](#)

[IRC News](#)

[Staff Activities](#)

[Subscribe to Benchmarks Online](#)

Helpdesk FYI

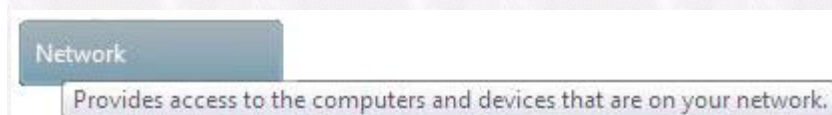
By [Jonathan "Mac" Edwards](#), Assistant Manager of the CITC Helpdesk

Windows Vista Wireless Issue

At the CITC Helpdesk we help many users troubleshoot wireless issues on their laptops. Many times users will be unable to connect to the wireless network due to a hardcoded IPv6/IPv4 and DNS address. Normally users experiencing this problem will have a strong signal, but will not be redirected to the EagleConnect log-in page; their wireless access may be listed as "Local Only." Both IPv6 & IPv4 need to be set to Automatically Acquire for connection to Eaglenet.

We recommend that if there is information listed that users document this info in case these fields need to be reset later.

Follow the steps below to make sure you have the proper settings:
Go to Windows > Network.



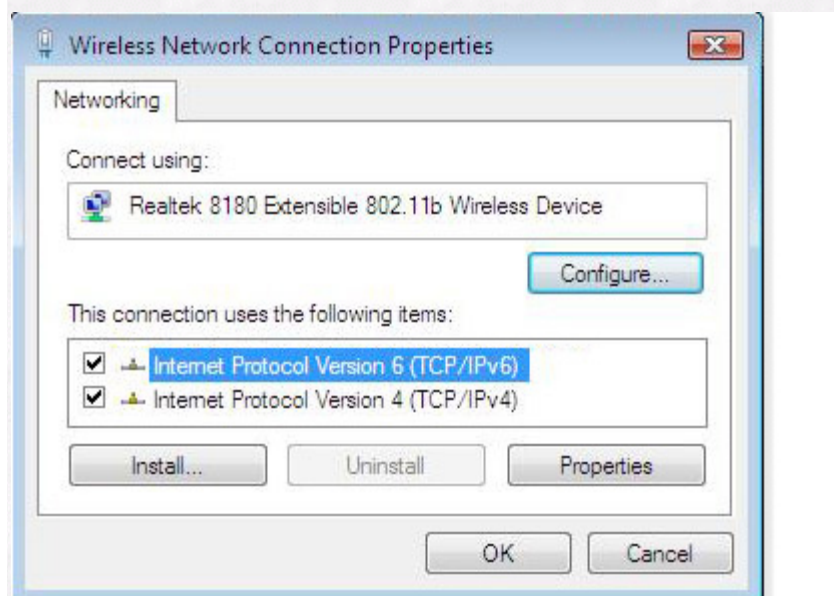
Select Network and Sharing Center.



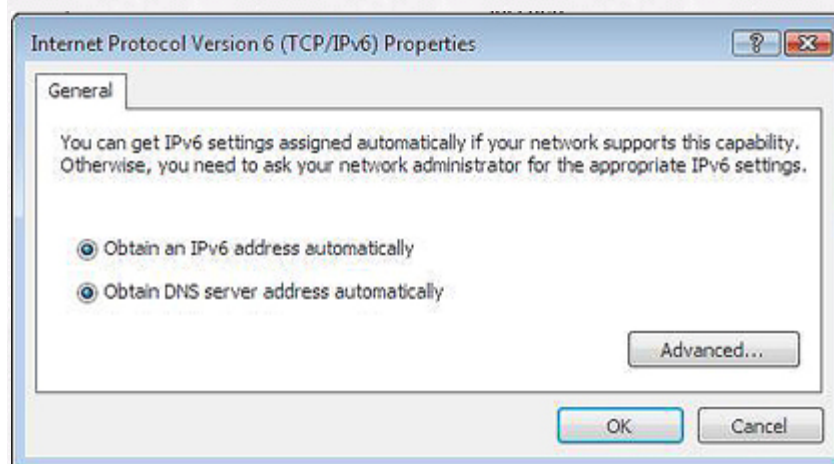
Right click on the Wireless Icon, and chose Properties



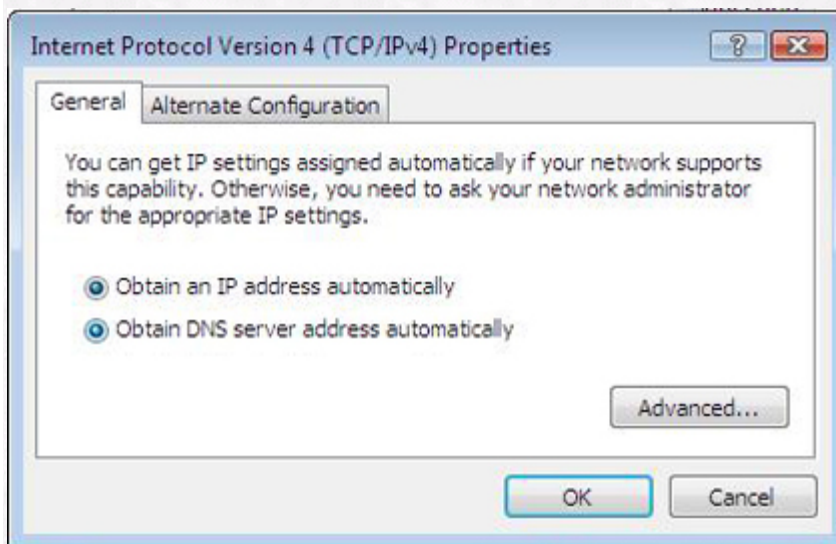
The Wireless Network Connection Properties window should appear.



Now select Internet Protocol Version 6, and click on Properties. Make sure Obtain IPv6 address automatically, and Obtain DNS server address automatically are both selected.



Click OK, and repeat the previous steps for Internet Protocol version 4.



Click OK, and then Click OK to close the Wireless Network Connection Properties window.

Open up a new browser window, and you should now be directed to the Eaglenet log-in page.



Originally published, July 2009 -- Please note that information published in *Benchmarks Online* is likely to degrade over time, especially links to various Websites. To make sure you have the most current information on a specific topic, it may be best to search the UNT Website - <http://www.unt.edu> . You can also search **Benchmarks Online** - <http://www.unt.edu/benchmarks/archives/back.htm> as well as consult the UNT Helpdesk - <http://www.unt.edu/helpdesk/> Questions and comments should be directed to benchmarks@unt.edu

[Return to top](#)

[Page One](#)
[Campus Computing News](#)
[Gartner Research Services](#)
[Bits -n- Bytes](#)
[Summer Hours](#)
[Denver in November: EDUCAUSE 2009](#)
[Today's Cartoon](#)
[RSS Matters](#)
[The Network Connection](#)
[Link of the Month](#)
[Helpdesk FYI](#)
[Short Courses](#)
[IRC News](#)
[Staff Activities](#)
[Subscribe to Benchmarks Online](#)

IRC News



Minutes provided by Susan Richroath,
Recording Secretary*

The IRC -- unofficially now known as the INFORMATION TECHNOLOGY COUNCIL (ITC) -- is currently undergoing a reorganization, see the May 20, 2008 [minutes](#) for more information.**

The IRC/ITC did not meet in February or March, 2009.

Tuesday, April 21, 2009

Voting members present: Judith Adkison, Joel Arredondo, Lou Ann Bradley, Warren Burggren (Chair), Jim Byford, Cengiz Capan, Tim Christian, Katy Gallahan, Noreen Goggin, Jane Himmel, Elizabeth Hinkle-Turner, Lynn McCreary for Troy Johnson, Frances May, William Moen, Ramu Muthiah, Patrick Pluscht, Joey Saxon, and Zheng Xiang **Non-voting members present:** Philip Baczewski, John Hooper, Maurice Leatherbury, Susan Richroath, Charlotte Russell, and Jackie Thames **Members absent:** Joe Adamo, Jim Curry, Kelly Donahue-Wallace, Renee Drabier, Yunfei Du, Kevin Eades, Don Grose, Bruce Hunter, Melissa Jackson Abraham John, Jon Nelson, John Price, Will Senn, and Phillip Turner **Guest:** Rich Anderson, CITC Information Security

Minutes approved, New member introduced

The minutes of the previous ITC meeting, January 20, 2009, were approved with no recommended corrections.

Warren Burggren introduced Katy Gallahan, Computer Systems and Network Manager from the President's Office, as the newest member to the Council.

Bi-monthly meeting schedule

Warren Burggren proposed a bi-monthly meeting schedule for the ITC. The delay of two months in voting situations was discussed. Electronic voting is an option. The Council will try a bi-monthly schedule with the next meeting set for June 16, 2009. The FY10 schedule will begin in September to avoid a meeting in late December.

UNT Centralink

Cengiz Capan informed the Council on a product development project that students in Engineering, Communication Design and Journalism were creating called UNT Centralink. The project involves programming and testing iphones to access UNT computer systems.

The students were not informed in a timely fashion to attend this meeting but will be invited to a future meeting to provide a presentation of their product.

Digital Repository discussed

William Moen discussed an initial proposal submitted by Cathy Hartman and William Moen to Provost Wilkins titled “Managing and Preserving Digital Information at UNT: Planning a Digital Repository Infrastructure to Support Scholarly Work and Scholarly Communication.” The repository emphasis will be to collect and preserve scholarly work such as papers and research data. The next step is finalizing the proposal for review. A related issue to the repository is open access. The Provost has been encouraged to join a consortium to promote open access. Warren Burggren addressed issues of concern which the engineering, technology, and science fields have expressed in regard to the open access format. In the near future, Del McDaniel, Associate Dean for Research in the College of Arts and Sciences, will be leading discussions on open access, the value of material available, and any other concerns.

High Performance Computing Project

Philip Baczewski reported on the high performance computing project. Vish Prasad, VP for Research and Economic Development, established a committee of faculty and staff to recommend details for a \$1.3 million upgrade and expansion of centralized high performance computing capabilities to meet the research needs of current and future faculty at UNT. The composed configuration recommended by the committee will meet the requirements for inclusion on the list of top 500 supercomputer sites and will be a major step in publicizing UNT’s research and an important aid in recruiting world-class researchers.

EIS Reports

John Hooper reported that the EIS Portal System “*myUNT*” is being upgraded to an enhanced version of software April 25-27. The upgrade provides major improvements that make portal navigation easier and more intuitive.

John Hooper reported that the EIS student system, which also contains some HR and payroll features, will be upgraded to version 9.0 in November 2009.

John Hooper distributed an outline of the status of the UNT Dallas EIS implementation which was reviewed and discussed.

EagleConnect

Elizabeth Hinkle-Turner provided an update on the student EagleConnect migration. With the assistance of URCM, a market campaign was established to entice students to participate in advance. A basket of promotional items was available for viewing. Face to face events such as University Day and Earth Week have helped reach 5,000 students so far.

Next Meeting

The next meeting of the ITC is scheduled for June 16, 2009.

There being no further business, the meeting was adjourned at 3:15 pm.

* For a list of IRC Regular and Ex-officio Members click [here](#) (last updated 12/12/08).
Warren Burggren is now the Chair.

**DCSMT Minutes can be found [here](#).



Originally published, July 2009 -- Please note that information published in *Benchmarks Online* is likely to degrade over time, especially links to various Websites. To make sure you have the most current information on a specific topic, it may be best to search the UNT Website - <http://www.unt.edu> . You can also search **Benchmarks Online** - <http://www.unt.edu/benchmarks/archives/back.htm> as well as consult the UNT Helpdesk - <http://www.unt.edu/helpdesk/>
Questions and comments should be directed to benchmarks@unt.edu

[Return to top](#)

[Page One](#)
[Campus Computing News](#)
[Gartner Research Services](#)
[Bits -n- Bytes](#)
[Summer Hours](#)
[Denver in November: EDUCAUSE 2009](#)
[Today's Cartoon](#)
[RSS Matters](#)
[The Network Connection](#)
[Link of the Month](#)
[Helpdesk FYI](#)
[Short Courses](#)
[IRC News](#)
[Staff Activities](#)
[Subscribe to Benchmarks Online](#)

Research and Statistical Support University of North Texas

RSS Matters

Link to the last RSS article here: [PROC TWEET: Using SAS to Analyze Twitter](#). - Ed.

Announcing SAS 9.2 For Windows

By [Patrick McLeod](#), Research and Statistical Support Services Consultant

We in Academic Computing Services' Research and Statistical Support office are happy to announce the long-awaited arrival of SAS 9.2. SAS 9.2 has been in development for several years and has been in production for a year and a half. UNT has not been able to put SAS 9.2 into production until now due to the need for all of our licensed modules and functionality to be compatible with SAS 9.2.

So What's New?

There is a lot new with SAS 9.2. While there are some new kids on the block (SAS Power and Sample Size), many of your old favorites are still around but now include new functionality. While I admit that I haven't had too much time to put SAS 9.2 through its paces, I have been exceptionally impressed with the enhanced capabilities of SAS/GRAPH.

Here are some links through the SAS support website (<http://support.sas.com>) regarding SAS 9.2:

- [SAS 9.2 Documentation](#)
- [Samples and SAS Notes involving SAS 9.2 Compatibility](#)
- [SAS Papers on Base SAS Language, Procedures, ODS and Macros](#) (9.2 and prior versions)
- [SAS Papers on SAS/GRAPH](#) (9.2 and prior versions):
- [SAS Papers on SAS/STAT, SAS/IML and SAS/OR](#)

I encourage anyone making the switch from SAS 9.1.3 to SAS 9.2 to browse these links and investigate the compatibility of any ongoing work in SAS 9.1.3 with SAS 9.2. You most likely will not run into any code compatibility issues, but it's always better to be safe rather

than sorry during such transitions!

The SAS License

As with previous versions of SAS, our SAS license stipulates that SAS is available under two different conditions: Our Teaching and Research license covers use by qualified faculty and staff members who are engaged in teaching and/or academic research. Our Administrative license covers use by qualified staff members who are using SAS for administrative purposes. Please contact me (Patrick.Mcleod@unt.edu) for more information regarding our SAS licenses.



Originally published, July 2009 -- Please note that information published in *Benchmarks Online* is likely to degrade over time, especially links to various Websites. To make sure you have the most current information on a specific topic, it may be best to search the UNT Website - <http://www.unt.edu> . You can also search *Benchmarks Online* - <http://www.unt.edu/benchmarks/archives/back.htm> as well as consult the UNT Helpdesk - <http://www.unt.edu/helpdesk/> Questions and comments should be directed to benchmarks@unt.edu

[Return to top](#)

[Page One](#)
[Campus Computing News](#)
[Gartner Research Services](#)
[Bits -n- Bytes](#)
[Summer Hours](#)
[Denver in November: EDUCAUSE 2009](#)
[Today's Cartoon](#)
[RSS Matters](#)
[The Network Connection](#)
[Link of the Month](#)
[Helpdesk FYI](#)
[Short Courses](#)
[IRC News](#)
[Staff Activities](#)
[Subscribe to Benchmarks Online](#)

Short Courses

By [Claudia Lynch](#), *Benchmarks Online* Editor

Short courses have been scheduled and, in fact, are almost over. Classes in R, S-Plus and New Technologies for Survey Research remain. Surf over to the [Short Courses](#) page to see the schedule.

Special classes can always be arranged with the RSS staff. See "Customized Short Courses" below for further information. Also, you can *always* contact the RSS staff for one-on-one [consultation](#). **Please read the [FAQ](#) before requesting an appointment though.**

Customized Short Courses

Faculty members can request customized short courses geared to their class needs from ACS. Other groups can request special courses also. Contact ACS for more information (ISB 119, 565-4068, lynch@unt.edu).

Especially for Faculty and Staff Members

In addition to the ACS Short Courses, which are available to students, faculty and staff, staff and faculty members can take courses offered through the [Human Resources Department](#) (they have a new comprehensive training curriculum), and the [Center for Learning Enhancement, Assessment, and Redesign](#). Additionally, the [Center for Achievement and Lifelong Learning](#) offers a variety of courses, usually for a small fee.

EIS training is [available](#). Questions or comments relating to EIS training should be sent to EIStrn@unt.edu.



Microsoft E-Learning

Microsoft E-Learning courses are now available for *faculty and staff* via our UNT-Microsoft Campus Agreement. Please contact Claudia Lynch at lynch@unt.edu for instructions on accessing this training.

Microsoft Outlook Training and more

The Messaging Systems Group has all sorts of useful information on their website, including [training information](#).

Central Web Support

Consult Central Web Support for assistance in acquiring “Internet services and support.” As described on their newly re-designed [website](#):

CWS provides Internet services and support to UNT faculty, staff and students. Services include allocating and assisting departments, campus organizations and faculty with web space and associated applications. Additionally, CWS assists web developers with databases and associated web applications, troubleshooting problems, support and service.

Tutorials are available from CWS on a variety of [topics](#).

CLEAR (was Center for Distributed Learning)

[CLEAR](#) offers courses especially for Faculty Members. A list of topics and further information can be found [here](#).

The center also offers a "Brown Bag" series which meets for lunch the first Thursday of each month at Noon in Chilton 245. The purpose of this group is to bring faculty members together to share their experiences with distributed learning. One demonstration will be made at each meeting by a faculty member with experience in distributed learning. More information on these activities can be found at the [CLEAR](#) Website.

UNT Mini-Courses

There are a variety of courses offered, for a fee, to UNT faculty, staff and students as well as the general public. For additional information surf over to <http://www.unt.edu/minicourses/>

Information Security Awareness

The UNT Information Security team has been offering Information Security Awareness [courses](#) to all UNT faculty and staff. Topics to be covered will include workstation security, sensitive data handling, copyright infringement issues, identity theft, email security, and more.

For more information, or if you would like to request a customized course to be taught for your department, contact Gabe Marshall at x4062, or at security@unt.edu.

Also, Information Security Training is [now available](#) through WebCT Vista.

Alternate Forms of Training

Many of the General Access Labs around campus have tutorials installed on their computers. See <http://www.gal.unt.edu/> for a list of labs and their locations. The Willis Library, for example, has a [list of Tutorials and Software Support](#).

The [Training Website](#) has all sorts of information about alternate forms of training. Computer Based Training (CBT) and Web-based training are some of the alternatives offered, although due to the rising costs of training, shrinking budgets and changing technology, computer-based training at UNT is in a state of transition. For up-to-date information on CBT at UNT, see the CBT [website](#).

State of Texas Department of Information Resources

Another possible source of training for staff and, perhaps, faculty members is the Texas Department of Information Resources. A look at their Education and Training [website](#) reveals some interesting possibilities. For example, under [Conferences, Briefings, and Events](#) is a "Microsoft Training Series" described as "free training classes ... delivered by Microsoft and hosted by DIR as part of the Technology Today Series (TTS)."

Gartner Research Services

Not exactly training, but training could be involved depending on the topic you are interested in. [Gartner Research Services](#) are available to UNT faculty, staff, *and* students.

As seen in [InHouse](#) ...

Workshop offered for staff: Enrolling at UNT 101

Posted by: [Mellina Stucky](#)

[Staff Council](#) and [Enrollment Management](#) will offer a workshop on **Aug. 5** from 9 a.m. to 11 a.m. and **Aug. 12** from 2 p.m. to 4 p.m. in the **University Union**, Room 411 highlighting the steps staff need to take in order to enroll in courses at UNT.

Topics that will be discussed include using the faculty/staff scholarship, how to take a course during normal working hours, admission to UNT and getting started on a degree plan.

Contact [Rhonda Acker](#) or [register](#) online. (Select 'continue on' from security web site.)



Originally published, July 2009 -- Please note that information published in *Benchmarks Online* is likely to degrade over time, especially links to various Websites. To make sure you have the most current information on a specific topic, it may be best to search the UNT Website - <http://www.unt.edu> . You can also search *Benchmarks Online* - <http://www.unt.edu/benchmarks/archives/back.htm> as well as consult the UNT Helpdesk - <http://www.unt.edu/helpdesk/>. Questions and comments should be directed to benchmarks@unt.edu

[Return to top](#)

[Page One](#)
[Campus Computing News](#)
[Gartner Research Services](#)
[Bits -n- Bytes](#)
[Summer Hours](#)
[Denver in November: EDUCAUSE 2009](#)
[Today's Cartoon](#)
[RSS Matters](#)
[The Network Connection](#)
[Link of the Month](#)
[Helpdesk FYI](#)
[Short Courses](#)
[IRC News](#)
[Staff Activities](#)
[Subscribe to Benchmarks Online](#)

Staff Activities

Transitions

New Employees:

- **Fredricka Sule Granger**, Programmer Analyst, Financial Information Systems (AIS).
- **Tariqul Hasan**, Programmer Analyst, Financial Information Systems (AIS).
- **Bryan VanDivier**, Communications Manager, Data Communications.

No longer working in the Computing and Information Technology Center:

- **Kendall Hooks**, CSS Tech, Classroom Support Services (part-time).
- **Maqsood Khandaker**, CSS Tech, Classroom Support Services (part-time).

Changes, Awards, Recognition, Publications, etc.

Leatherbury named acting VP for information technology

According to an official notice that was distributed via e-mail as well as [an article](#) in *InHouse*, "**Maurice Leatherbury**, who has served in the computing and information technology center for about 15 years, will serve as acting vice president for information technology and chief information officer effective September 1. He will continue to oversee the university's computing needs, and will participate in technology planning discussions at the highest level. Creating an independent Vice President for Information Technology was recommended in two peer reviews we instituted over the past three years."

Service to UNT

The following people were recognized in the [June 30 InHouse](#) for their years of service to the University. Congratulations and thanks to:

25 years of service

Philip C. Baczewski, Director of Academic Computing and User Services.

10 years of service

Joseph E. Cranmore, Communications Manager, Data Communications.

Shane Ray Jester, Computer Systems Manager, Distributed Learning Support.

Fun Fact Winners

Continuing the CITC tradition, we have another "Fun Fact Winner." Congratulations to **Jay Maxwell**, Programmer Analyst, Contributor Relations (AIS) who was a winner in the [July 14 InHouse](#) prize giveaway.



Originally published, July 2009 -- Please note that information published in *Benchmarks Online* is likely to degrade over time, especially links to various Websites. To make sure you have the most current information on a specific topic, it may be best to search the UNT Website - <http://www.unt.edu> . You can also search *Benchmarks Online* - <http://www.unt.edu/benchmarks/archives/back.htm> as well as consult the UNT Helpdesk - <http://www.unt.edu/helpdesk/> Questions and comments should be directed to benchmarks@unt.edu

[Return to top](#)