

Columns

[NetworkConnection](#)[Link of the Month](#)[IRC News](#)[RSS Matters](#)[www@unt.edu](#)[Short Courses](#)[Staff Activities](#)

Campus Computing News

[The GreMigration](#)[Semester Break Hours](#)[Gartner Core Research Services Now Available to the UNT Community](#)[SkillSoft Site Re-organized With New Course Offerings](#)**TODAY'S CARTOON**

[Don't forget our monthly Columns!](#)



[Return to top](#)

UNIVERSITY OF NORTH TEXAS™

[Network Connection](#) | [Link of the Month](#) | [IRC News](#) | [RSS Matters](#) | [www@unt.edu](#) | [Short Courses](#) | [Staff Activities](#)

[Computing and Information Technology Center Home](#) | [Help Desk](#) | [Training](#) | [About Us](#) | [Publications](#) | [Our Mission](#)

Questions, comments and corrections for this site: lynch@unt.edu
Site was last updated or revised : June 13, 2006

Please note that information published in *Benchmarks Online* is likely to degrade over time, especially links to various Websites. To make sure you have the most current information on a specific topic, it may be best to search the UNT Website - <http://www.unt.edu> . You can also search **Benchmarks Online** - <http://www.unt.edu/benchmarks/archives/back.htm> as well as consult the UNT Helpdesk - <http://www.unt.edu/helpdesk/> Questions and comments should be directed to benchmarks@unt.edu

[UNT home page](#) | [Search UNT](#) | [UNT news](#) | [UNT events](#)

[Page One](#)
[Campus Computing News](#)
[Semester Break Hours](#)
[Gartner Core Research Services Now Available to the UNT Community](#)
[SkillSoft Site Re-organized With New Course Offerings](#)
[Today's Cartoon](#)
[RSS Matters](#)
[The Network Connection](#)
[Link of the Month](#)
[WWW@UNT.EDU](#)
[Short Courses](#)
[IRC News](#)
[Staff Activities](#)
[Subscribe to Benchmarks Online](#)

Campus Computing News

The Great Migration

By [Claudia Lynch](#), *Benchmarks Online* Editor

We have liftoff! After years of planning, the majority of the Computing and Information Technology Center's operations are moving to the UNT Research Park. The CITC administrative offices, security team, data communications, UNIX Support Services, and the telecommunications groups moved Friday, April 7. Administrative information systems, Central Web Support, and Distributed Learning Support will be moving Friday, April 14. By mid-May, the GroupWise, Novell, and network operating system support groups will have moved. Academic Computing and User Services, including the Help Desk, will remain on the main campus in their current offices on the first floor of the Information Sciences Building. Campus information operators will also remain on campus in the ESSC.

Plans for a move from crowded offices in the ISB, GAB, the Hospital, and Marquis Hall have been in the works for a long time. There was just never a consensus on where everyone should move. [Several times](#) it has looked like we would get a new building or build an addition on to the ISB. When the University [purchased](#) the old TI Plant in 2001, plans for a move and consolidation of CITC staff began in earnest. In fact, the very first tenants of the plant, re-christened UNT [Research Park](#) in 2002, were members of the [EIS Project](#) Implementation Team. That team consisted, in part, of [CITC employees](#).

A little history ...

This has certainly been a memorable academic year for the Computing and Information Technology Center. Besides the move to the Research Park, Richard Harris, who was basically the founding father of computing at UNT, [retired](#) after 43 years of service. Coy Hoggard, who joined UNT a couple of years after Harris, also [retired](#).

In 1964 Harris, Hoggard and the IBM 1440*, which was purchased to perform administrative data processing, were housed in the basement of the Administration Building. In 1970, the University acquired an [IBM 360/50](#) mainframe computer and the Computing Center moved to the ISB. UNT was known as NTSU until 1988 and had several other names [before that](#). The Computing Center became the Computing and Information Technology Center in [2003](#) and the rest, as they say, is history.

For pictures of the CITC areas in the Research Park, and more, [click here](#).

* See "[A Mainframe Memoir](#)" for more on the IBM 1440 and the men (now [retired](#)) who made it - and other mainframe computers - run.

sure you have the most current information on a specific topic, it may be best to search the UNT Website - <http://www.unt.edu> . You can also search *Benchmarks Online* - <http://www.unt.edu/benchmarks/archives/back.htm> as well as consult the UNT Helpdesk - <http://www.unt.edu/helpdesk/> Questions and comments should be directed to benchmarks@unt.edu

[Return to top](#)

[Page One](#)
[Campus
Computing
News](#)
[Semester Break
Hours](#)
[Gartner Core
Research
Services Now
Available to the
UNT Community](#)
[SkillSoft Site Re-
organized With
New Course
Offerings](#)
[Today's Cartoon](#)
[RSS Matters](#)
[The Network
Connection](#)
[Link of the
Month](#)
[WWW@UNT.EDU](#)
[Short Courses](#)
[IRC News](#)
[Staff Activities](#)
[Subscribe to
Benchmarks
Online](#)

Semester Break Hours

By [Claudia Lynch](#), Benchmarks Online Editor

The spring semester is coming to a close and that means that many areas will have abbreviated hours during finals week until the beginning of the summer sessions. Final exams [begin](#) Saturday, May 6, and the semester ends Friday, May 12. SUM , 3WK1, 8WK1 classes* begin on Monday, May 15. Following are the hours for Computing and Information Technology Center-managed facilities during this time period and, in some cases, the summer. The [Helpdesk](#) plans, at this point, to be open their normal hours. The University is [officially closed](#) for Memorial Day, May 29 and Independence Day, July 4.

- The ACS General Access/Adaptive Lab ([ISB 110](#)):

Friday, May 12: **Close** at 5:00 p.m.

Saturday, May 13: 10:00-5:00 pm

May 14 - May 28:

Sundays: 1 - 9:45 p.m.

Monday - Thursdays: 8 a.m. - 9:45 p.m.

Fridays: 8 a.m. - 8:45 p.m.

Saturdays: 10 a.m. - 8:45 p.m.

May 29 (holiday): **open** 9 a.m. - 5 p.m.

Hours for Other Campus Facilities

General Access Labs

- [WILLIS](#):

Willis will remain open 24/7 until the 12th of May...

Hours for minimester (3 Week 1 - 3W1):

Friday, May 12: Close at 5:50 p.m.

Saturday, May 13: 9 a.m. - 5:50 p.m.

Sunday, May 14: 1 p.m. - 9:50 p.m.

Monday-Thursday, May 15 - May 18: 7:30 a.m. - 9:50 p.m.

Friday, May 19: 7:30 a.m. - 8:50 p.m.

Saturday, May 20: 9 a.m. - 8:50 p.m.

Sunday, May 21: 1 pm-9:50pm
Monday-Thursday, May 22 - May 25: 7:30 a.m. - 9:50 p.m.
Friday, May 26: 7:30 a.m. - 8:50 p.m.
Saturday, May 27: 9 a.m. - 8:50 p.m.

Sunday, May 28: 1 p.m. - 9:50 p.m.
Monday, May 29 (holiday): 8 a.m. - 5:50 p.m.
Tuesday-Thursday, May 30- June 1: 7:30 a.m. - 9:50 p.m.
Friday, June 2: 7:30 a.m. - Noon: **Closed for training**
Saturday, June 3: 9 a.m. - 5:50 p.m.

Sunday, June 4: open at 1 p.m. and *return to our 24hr schedule.*

- [SLIS:](#)

Summer Hours:

Monday - Thursday: 10 a.m. - 2 a.m.
Friday - Saturday: 8 a.m. - 10 p.m.
Sunday: Noon - Midnight

- [MUSIC:](#)

Summer Hours:

Monday - Thursday: 8 a.m. - 9 p.m.
Friday: 8 a.m. - 5 p.m.
Saturday: 10 a.m. - 5 p.m.
Sunday: 1 p.m. - 8 p.m.

- [PACS Computing Center](#) (formerly SCS & SMHM):

Closed between semesters.

Summer Hours:

Monday - Thursday: 8 a.m. - 10 p.m.
Friday - Saturday: 8 a.m. - 5 p.m.
Sunday: 12 p.m. - 10 p.m.

- [SOVA:](#)

Closed between semesters.

Summer Hours:

Sunday: 1 p.m. - 10 p.m.
Monday - Thursday: 10 a.m. - 10 p.m.
Friday, Saturday: 10 a.m. - 5 p.m.

- [COE:](#)

Friday, May 12 : **Close** at 5 p.m.
Saturday, May 13: **Closed**
Sunday, May 14: **Closed**

Monday, May 15 - Thursday, August 10:
Regular hours.

Friday, August 11: **Close** at 4 p.m.

Special Closings:

Memorial Day: May 29

- [COBA](#):

Summer Hours:

Monday, May 15 - Thursday, August 10:
Regular hours.

- [CAS](#):

GAB 330:

Friday, May 12 : **Close** at 5 p.m.

Saturday, May 13: **Closed**

Sunday, May 14: **Closed**

Monday, May 15 - Sunday, June 4 (3 Week 1 - 3W1):

Monday - Thursday: 8 a.m. - 10 p.m.

Friday: 8 a.m. - 5 p.m.

Saturday: Noon - 8 p.m.

Sunday: Noon - 10 p.m.

Special Closings:

End of 3W1: June 2 - 4

Monday, June 5 (5 Week 1- 5W1) - Friday, August 11 (5 Week 2 - 5W2):

Monday - Thursday: 8 a.m. - Midnight.

Friday: 8 a.m. - 5 p.m.

Saturday: Noon - 8 p.m.

Sunday: Noon - Midnight.

Special Closings:

Independence Day: July 4

Semester Break: August 12 - 27

GAB 550:

Friday, May 12 : **Close** at 5 p.m.

Monday, May 15 - Sunday, June 4 (3 Week 1 - 3W1): **Closed**

Monday, June 5 (5 Week 1- 5W1) - Friday, August 11 (5 Week 2 - 5W2):

Monday - Thursday: 8 a.m. - 5 p.m.

Friday: 8 a.m. - 5 p.m.

Saturday: **Closed**

Sunday: **Closed**

Special Closings:

Independence Day: July 4

Semester Break: August 12 - 27

Terrill 220:

Friday, May 12 : **Close** at 5 p.m.

Monday, May 15 - Sunday, June 4 (3 Week 1 - 3W1): **Closed**

Monday, June 5 (5 Week 1- 5W1) - Friday, August 11 (5 Week 2 - 5W2):

Monday - Thursday: 8 a.m. - 8 p.m.

Friday: 8 a.m. - 5 p.m.

Saturday: **Closed**

Sunday: **Closed**

Special Closings:

Independence Day: July 4

Semester Break: August 12 - 27

Wooten 120:

Friday, May 12 : **Close** at 5 p.m.

Monday, May 15 - Sunday, June 4 (3 Week 1 - 3W1):

Monday - Thursday: 8 a.m. - 6 p.m.

Friday: 8 a.m. - 5 p.m.

Saturday: **Closed**

Sunday: **Closed**

Special Closings:

Memorial Day: May 29

End of 3W1: June 2 - 4

Monday, June 5 (5 Week 1- 5W1) - Friday, August 11 (5 Week 2 - 5W2):

Monday - Thursday: 8 a.m. - 10 p.m.

Friday: 8 a.m. - 5 p.m.

Saturday: **Closed**

Sunday: **Closed**

Special Closings:

Independence Day: July 4

Semester Break: August 12 - 27

- UNT [Dallas Campus](#) - 155A

Summer Hours:

Monday, May 15 - Friday, August 11:
Regular hours.

- [Engineering General Access Lab](#) (englab@unt.edu, Research Park, B129, 891-6733)

Summer Hours:

Monday, May 15 - Friday, August 11:

Monday - Friday: 9 a.m. - 5 p.m.
Saturday: **Closed**
Sunday: **Closed**

Fridays may become closed days or shorter hours, depending on classes/needs.

* Terminology and schedules for classes offered in the summer has changed in recent years:

- SUMmer=Entire Summer Session, 3WK1 = 3-week 1, 8WK1=8-week 1, 5WK1= 5-week 1, 10WK1= 10-week, 5WK2= 5-week 2. All summer sessions end on August 11 [this year](#).
- Summer Session 3W1: formerly May Minimester
- Summer Session 5W1: formerly Summer I
- Summer Session 5W2: formerly Summer II.

Please note that information published in *Benchmarks Online* is likely to degrade over time, especially links to various Websites. To make sure you have the most current information on a specific topic, it may be best to search the UNT Website - <http://www.unt.edu> . You can also search **Benchmarks Online** - <http://www.unt.edu/benchmarks/archives/back.htm> as well as consult the UNT Helpdesk - <http://www.unt.edu/helpdesk/>. Questions and comments should be directed to benchmarks@unt.edu

[Return to top](#)

[Page One](#)

[Campus Computing News](#)

[Semester Break Hours](#)

Gartner Core Research Services Now Available to the UNT Community

[SkillSoft Site Re-organized With New Course Offerings](#)

[Today's Cartoon](#)

[RSS Matters](#)

[The Network Connection](#)

[Link of the Month](#)

[WWW@UNT.EDU](#)

[Short Courses](#)

[IRC News](#)

[Staff Activities](#)

[Subscribe to Benchmarks Online](#)

Gartner Core Research Services Now Available to the UNT Community

By [Dr. Maurice Leatherbury](#), Associate Vice President for Computing and Chief Technology Officer, CITC

The Computing and Information Technology Center, the Library, the College of Arts & Sciences, the College of Engineering, and the College of Business Administration have cooperated to purchase a subscription to Gartner Core Research Services for all UNT faculty, students, and staff. To access the subscription, you must log into the UNT Gartner portal page at <https://gartner.unt.edu/>.

Gartner Core Research contains a large base of knowledge regarding IT technologies, markets, and industries. It supplies easy access to data and analysis about the latest news, trends, products, and insights within the field of information technology. The Research for Higher Education section is designed to meet the specific needs of students, faculty and staff as well as technology professionals within the University. It offers unparalleled depth and breadth of research developed by analysts who have extensive backgrounds and it strives for objectivity and independence.

The Gartner research includes:

- Emerging trends in technology
- Governance best practices
- Strategic Planning Best Practices
- Strategic document review
- Wireless technology trends
- Security: Disaster Recovery, Business Continuity
- Administrative and Student Financial Systems
- Distance Learning
- Open Source

For a more comprehensive view of the Gartner offerings you can visit their web site via the UNT Gartner portal at <https://gartner.unt.edu/>.

Please note that information published in *Benchmarks Online* is likely to degrade over time, especially links to various Websites. To make sure you have the most current information on a specific topic, it may be best to search the UNT Website - <http://www.unt.edu>. You can also search *Benchmarks Online* - <http://www.unt.edu/benchmarks/archives/back.htm> as well as consult the UNT Helpdesk - <http://www.unt.edu/helpdesk/>. Questions and comments should be directed to benchmarks@unt.edu

[Return to top](#)

- [Page One](#)
- [Campus Computing News](#)
- [Semester Break Hours](#)
- [Gartner Core Research Services Now Available to the UNT Community](#)
- SkillsSoft Site Re-organized With New Course Offerings**
- [Today's Cartoon](#)
- [RSS Matters](#)
- [The Network Connection](#)
- [Link of the Month](#)
- [WWW@UNT.EDU](#)
- [Short Courses](#)
- [IRC News](#)
- [Staff Activities](#)
- [Subscribe to Benchmarks Online](#)

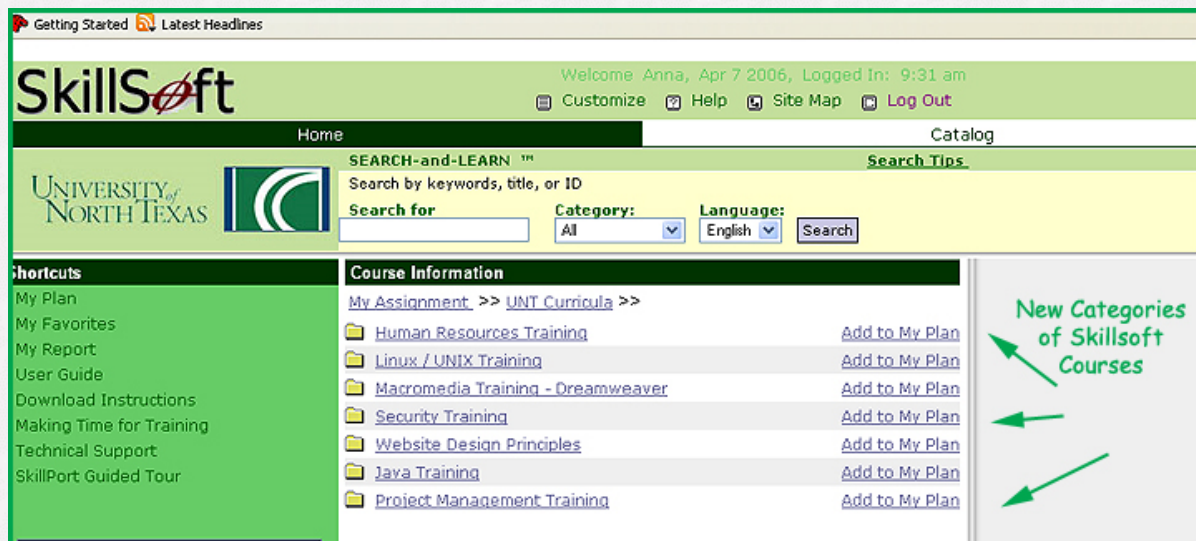


SkillSoft Site Re-organized With New Course Offerings

By [Dr. Elizabeth Hinkle-Turner](#), Student Computing Services Manager

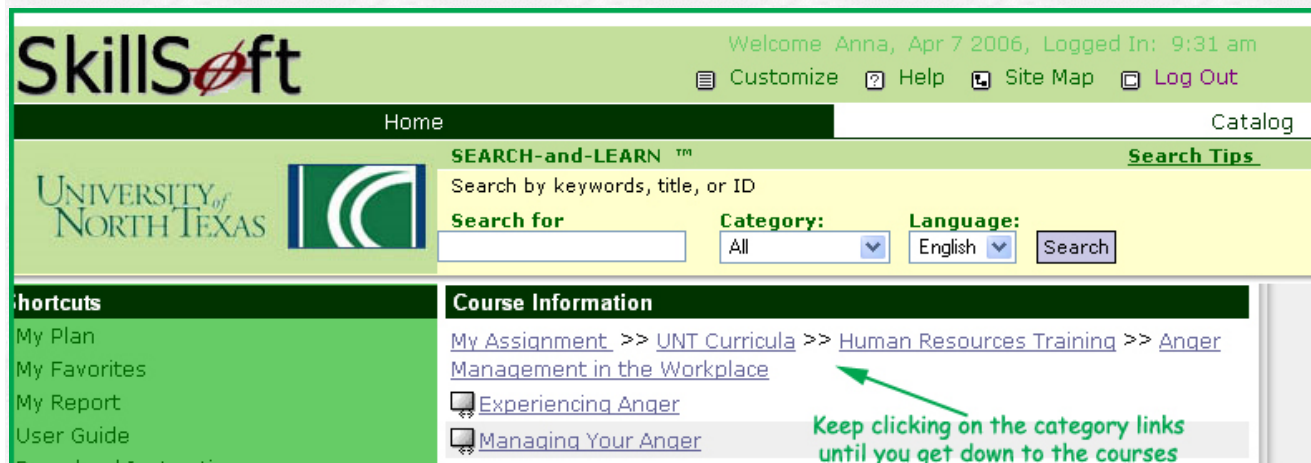
Several new courses have been added to the SkillSoft computer-based training site and some training has been deleted. All these changes and choices were done in collaboration with the various university departments that use computer-based training the most.

The new categories of training should help users find the courses they need in several broad areas: Human Resources, Linux/UNIX Training, Dreamweaver training, Security Training, Website Design Principles, Java Training, and Project Management Training. These areas either have proven to be the most-utilized by the UNT community or in the case of Project Management training and Security training will be targeted to specific audiences on campus by their supervisors.



The new SkillSoft categories as they appear on the website

Accessing the SkillSoft training has not changed but newcomers are encouraged to visit www.unt.edu/cbt/skillport_use.html to view an online tutorial on navigating the system. After one gets to the main course catalog categories, simply click on the links until reaching the courses (see below):



Simply click on the catalog links until you get down to the courses

All users are strongly encouraged to go to the computer-based training website at www.unt.edu/cbt to see all of the online

training available to the UNT community. Any further questions can be directed to ehinkle@unt.edu.

Here is a complete listing of the courseware available at UNT from SkillSoft:

UNT Curricula

- **Human Resources Training**
 - Anger Management in the Workplace
 - Experiencing Anger
 - Managing Your Anger
 - Dealing with Organizational Change
 - Perspectives on Organizational Change
 - Being Prepared for Change
 - Communicating during Organizational Change
 - Living a Balanced Life
 - Finding Your Life Balance
 - Success over Stress
 - Strategies for Better Balance
 - Practical Budgeting Skills for Business
 - Creating and Analyzing an Operating Budget
 - The Ins and Outs of Capital Budgeting
 - Effective Budget Management

- **Linux / UNIX Training**
 - Linux Intermediate System Administration
 - Linux Kernel Compilation and System Startup
 - Linux Filesystem Management and File Sharing
 - Linux Networking Configuration
 - Linux Networking Services
 - Linux Hardware Configuration and System Maintenance
 - Security in the Linux Environment
 - Linux System Customization and Automation
 - Linux Troubleshooting
 - SUSE Linux Fundamentals
 - Installing SUSE Linux
 - Command-Line Management in SUSE Linux
 - Configuring a SUSE Linux Network
 - Managing System Processes in SUSE Linux
 - Managing Users, Groups, and Storage in SUSE Linux
 - SUSE Linux Security
 - SUSE Linux Hardware and Documentation
 - Linux: Basic System Administration
 - Linux: System Administration Update I
 - Linux and CLI
 - Streams, Pipes, Redirects, and Processes
 - Regular Expressions and Text Processing
 - File Handling in Linux
 - File System Mounting and Management
 - Partitions, File Systems, and Disk Quotas in Linux
 - Linux: System Administration Update II
 - Hardware Issues for Linux
 - Hardware Configurations for Linux
 - Linux Installation Techniques
 - Debian and Red Hat Package Management
 - The X Window System
 - Linux: System Administration Update III
 - Updating the Linux Kernel
 - Printing and Documentation in Linux
 - Shell Scripting in Linux
 - Administrative Tasks in Linux
 - Managing Linux Group and User accounts
 - Automating Linux System Tasks and Backup Strategies
 - Linux: System Administration Update IV
 - Networking Fundamentals for Linux Administrators
 - Networking Services in a Linux Environment

- Working with Sendmail and Apache in Linux
- Security within a Linux Environment
- **Macromedia Training - Dreamweaver**
 - Setting up a Site and Adding Content in Dreamweaver MX 2004
 - Adding Links, Images, and Flash Objects in Dreamweaver MX 2004
 - Adding Tables in Dreamweaver MX 2004
 - Reusing Content in Dreamweaver MX 2004
 - Creating Interactive Web Pages in Dreamweaver MX 2004
 - Working with Cascading Style Sheets in Dreamweaver MX 2004
 - Site Testing and Maintenance in Dreamweaver MX 2004
- **Security Training**
 - Microsoft Security
 - Windows Server 2003
 - Windows Server 2003: Security Basics
 - Managing System Security in Windows Server 2003
 - Windows Server 2003: Logical Network Security
 - Securing Access to Resources in Windows Server 2003
 - Windows Server 2003: Securing Clients
 - Securing Wireless and Remote Communications in Windows Server 2003
 - Windows Server 2003: Physical Network Security
 - Managing IPSec in Windows Server 2003
 - Windows Server 2003: Securing Data and Server Roles
 - Managing Certificates in Windows Server 2003
 - Windows Server 2003: IIS Security and Firewalls
 - Windows 2000
 - Windows 2000 - Security Solutions
 - Microsoft Windows 2000 - Active Directory Design: Directory Services Security
 - Windows XP
 - Backup and Security Settings in Microsoft Windows XP SQL Security
 - Security in a Microsoft SQL Server 2000 Environment
 - Designing and Implementing Security in SQL Server 2000
 - Linux Security
 - Security within a Linux Environment
 - Security in the Linux Environment
 - SUSE Linux Security
 - Internet Security
 - Information security and the Internet
 - Web Services Security
 - General Networking Security
 - Security and the Wireless Environment
 - Introduction to Security in Networked Environments
 - Network Security Issues
 - Securing Access to Networks
 - Virtual Private Network Solutions
 - Securing WLANs
 - Securing Future Wireless Networks
 - Firewalls and VPNs
 - Security Analysis and Auditing in Networked Environments
 - Networking Security Fundamentals
 - Network Security
 - Oracle Security
 - Oracle Database 10g: Users and Security
 - Oracle Application Server 10g: Component Security with SSL
 - Solaris Security
 - Solaris 9 Security
 - General Security Information
 - Introduction to information security
 - Security Management and Operations Security Practices
 - General Security Concepts
 - Operational information security
 - Access Control and Physical Security
 - Communications Security
 - IT Security Awareness

- Miscellaneous Security Topics
 - Encryption Technologies
 - IIS 6.0 Security
 - Malicious code and information security
 - Java 2 Security Features
 - Infrastructure Security
 - Operating System and File Security Issues
 - Business Continuity Planning, Law, and Ethics
 - Operational and Organizational Security
 - Workplace Security Awareness
- **Website Design Principles**
 - Design Concepts for Web Sites
 - Advanced HTML Design Elements
 - Advanced Technology Concepts for Web Designers
 - Web Development Fundamentals
 - Internet Site Development
- **Java Training**
 - Java Programming with J2SE 5: Getting Started with Java
 - J2EE Architecture
 - Developing Servlets
 - Web service technologies
 - Java technologies for web services
 - Java Programming with J2SE 5: Operators and Flow Control in Java
 - Developing JSPs
 - Java web service clients
 - Java Programming with J2SE 5: Creating Classes in Java
 - Java 2 Security Features
 - Java Programming with J2SE 5: Working with Classes in Java
 - Java Programming with J2SE 5: Generics and Annotations
 - Java Programming with J2SE 5: Reference Types and Threading
 - Java Programming with J2SE 5: Exception Handling and Assertions
 - Java Programming with J2SE 5: Java Utilities
 - Java Programming with J2SE 5: Java I/O
 - Java Programming with J2SE 5: Basic GUI Development in Java
 - Java Programming with J2SE 5: Java Applets
- **Project Management Training**
 - Project Management Essentials - (PMBOK® Guide - Third Edition- aligned)
 - An Introduction to Project Management
 - Project Life Cycles and Stakeholders
 - Introduction to Project Process Groups and Initiating a Project
 - Project Planning
 - Executing, Monitoring & Controlling, and Closing a Project
 - Project Management Essentials Simulation
 - Project Management for IT Professionals
 - Introduction to IT Project Management
 - Functions of IT Project Managers
 - The Life Cycle of an IT Project
 - Managing the Execution and Control of IT Projects
 - Managing Efficiencies of IT Projects
 - Project IT Management Simulation - The Early Stages
 - Project IT Management Simulation - Design to Rollout
 - Strategic Project Management for IT Projects
 - Strategic Planning and Positioning for IT Projects
 - Strategic Approaches to Managing IT Projects
 - Estimating the IT Project Work Effort
 - IT Project Leadership, Authority & Accountability
 - Managing Multiple IT Projects
 - Cost Management and IT Project Trade-offs
 - Planning Strategic IT Projects Simulation

Please note that information published in *Benchmarks Online* is likely to degrade over time, especially links to various Websites. To make sure you have the most current information on a specific topic, it may be best to search the UNT Website - <http://www.unt.edu> . You can also search *Benchmarks Online* - <http://www.unt.edu/benchmarks/archives/back.htm> as well as

consult the UNT Helpdesk - <http://www.unt.edu/helpdesk/> Questions and comments should be directed to benchmarks@unt.edu

[Return to top](#)

[Page One](#)

[Campus Computing News](#)

[Semester Break Hours](#)

[Gartner Core Research Services Now Available to the UNT Community](#)

[SkillSoft Site Reorganized With New Course Offerings](#)

Today's Cartoon

[RSS Matters](#)

[The Network Connection](#)

[Link of the Month](#)

[WWW@UNT.EDU](#)

[Short Courses](#)

[IRC News](#)

[Staff Activities](#)

[Subscribe to Benchmarks Online](#)

maincontent

Today's Cartoon

Copyright 2006 by Randy Glasbergen.
www.glasbergen.com



“To survive in the new global economy will require massive consistent effort and immediate bold action! Without further delay, I am putting together a 10 year plan to study the problem further.”

From "Today's Cartoon by Randy Glasbergen", posted with special permission. For many more cartoons, please visit www.glasbergen.com.

Please note that information published in *Benchmarks Online* is likely to degrade over time, especially links to various Websites. To make sure you have the most current information on a specific topic, it may be best to search the UNT Website - <http://www.unt.edu> . You can also search *Benchmarks Online* - <http://www.unt.edu/benchmarks/archives/back.htm> as well as consult the UNT Helpdesk - <http://www.unt.edu/helpdesk/> Questions and comments should be directed to benchmarks@unt.edu

[Return to top](#)

[Page One](#)
[Campus Computing](#)
[Semester Break Hours](#)
[Gartner Core Research Services Now Available to the UNT Community](#)
[SkillSoft Site Reorganized With New Course Offerings](#)
[Today's Cartoon](#)
[RSS Matters](#)
[The Network Connection](#)
[Link of the Month](#)
[WWW@UNT.EDU](#)
[Short Courses](#)
[IRC News](#)
[Staff Activities](#)
[Subscribe to Benchmarks Online](#)

Network Connection

By [Dr. Philip Baczewski](#), Director of Academic Computing and User Services

Coming to a Website Near You

There seems to be a bit of an explosion of video on the Internet. OK, perhaps not an explosion, but recent developments indicate that video is quietly becoming as commonplace and ordinary as images in web pages. Part of this may be due to the fact that most computers are now fast enough and have enough storage and memory to play and even edit video. The other contributing factor is the increasing availability of and subscription to broadband Internet services in people's homes.

Macromedia's [Shockwave](#) player has been around for quite some time and was one of the first tools used as a plugin to a web browser to play animations and interactive programs such as games. Macromedia's [Flash](#) player provides a way to play media that's embedded in web pages. Windows and Mac OS X both have built in capabilities for playing video. For Windows, it's Windows Media Player, and for Mac OS, it's QuickTime. And, both of these products are cross platform, so QuickTime is available for Windows, and a version of Media Player is available for Mac OS, although the Mac version of Media Player tends to lag the Windows version.

Video for You

On the Internet, we see sites like [YouTube.com](#) growing as places for individuals to post their own video selections. Some of these are snippets from broadcast or other captured video, but in other cases, it's amateur productions which might include a teen's attempt to produce their own music video to showcase any talent they might have. Some of the material uploaded to [YouTube](#) has infringed on copyrights, but has also served to promote the source material. YouTube as recently imposed a 10-minute limit on video clips uploaded to the site.

YouTube is not alone as a video upload site. Not to ignore any Internet trend, [Google](#), has it's own beta video site. A number of others have been operational for quite some time. The general idea is to try to be the video equivalent of what [flickr.com](#) has done for pictures. A number of these were recently [compared](#) by [DVGuru.com](#), with [Vimeo](#), [VideoEgg](#), and [YouTube](#) receiving their nod of recommendation.

Video has been common on sites like [CNN.com](#) and [USAToday.com](#) for quite some time. Of course, video is the bread and butter of these organizations, especially CNN. But other organizations are making effective use of online video. For example, [Accuweather.com](#) offers video forecasts for a number of U.S. cities. Likewise, [The Weather Channel](#) web site offers video forecasts and other features from drawn from their daily productions.

Let them Entertain You

This trend toward online video is not being ignored by those in the entertainment industry that produce such content. ABC recently [announced](#) the availability of four of its shows as free downloads. These include commercials, but commercial-free versions of ABC shows are available for purchase on Apple's [iTunes](#) Music Store for \$1.99 per episode. Of course, with the introduction of the video iPod, Apple has made music videos and other kinds of video entertainment via iTunes.

[Recently](#), it became possible to purchase and download some movies as they are released on DVD. The online companies, [Movielink](#) and [CinemaNow](#) have made deals with certain movie studios to sell movies online at prices similar to what you'd pay for the DVD. This is a big step for the movie industry. Unlike music, movie sales until now have been tightly limited to distribution on solid media (generally VHS or DVD). Opening up movies to online sales, makes them more convenient to acquire, without leaving your home, and paves the way for your Internet-connected computer to become your primary entertainment center.

Your Future Living Room

The coming world of online video is not lost on the computer hardware industry. It's no accident that Dell now sells High Definition TVs. Dell also has a line of systems that it bills as "Digital Entertainment PCs". Apple has positioned it's Mac Mini as a possible future "set-top box." Apple has also included personal media production and player software with it's newly sold systems (their [iLife](#) suite). So not only is it easier to view video from online sources, but now, it's easy to make your own video productions and share them via Vimeo, YouTube, and similar sites. So, if you are a future Cecil B. DeMille, I'm ready for my close-up...

Please note that information published in *Benchmarks Online* is likely to degrade over time, especially links to various Websites. To make sure you have the most current information on a specific topic, it may be best to search the UNT Website - <http://www.unt.edu>. You can also search **Benchmarks Online** - <http://www.unt.edu/benchmarks/archives/back.htm> as well as consult the UNT Helpdesk - <http://www.unt.edu/helpdesk/> Questions and comments should be directed to benchmarks@unt.edu

[Return to top](#)

[Skip Navigation Links](#)

[Page One](#)

[Campus Computing News](#)

[Semester Break Hours](#)

[Gartner Core Research Services Now Available to the UNT Community](#)

[SkillSoft Site Reorganized With New Course Offerings](#)

[Today's Cartoon](#)

[RSS Matters](#)

[The Network Connection](#)

Link of the Month

[WWW@UNT.EDU](#)

[Short Courses](#)

[IRC News](#)

[Staff Activities](#)

[Subscribe to Benchmarks Online](#)

Link of the Month

Each month we highlight an Internet, USENET Special Interest Group (SIG), or similar mailing list(s) or website(s).

Center for Distributed Learning



UNT is the largest provider of ~~credit~~online courses among Texas public universities.

CDL News - Upcoming activities and the latest happenings

Surf over to the CDL website - <http://www.unt.edu/cdl/> - to find out the latest goings on in the area of distributed learning.

Please note that information published in *Benchmarks Online* is likely to degrade over time, especially links to various Websites. To make sure you have the most current information on a specific topic, it may be best to search the UNT Website - <http://www.unt.edu> . You can also search **Benchmarks Online** - <http://www.unt.edu/benchmarks/archives/back.htm> as well as consult the UNT Helpdesk - <http://www.unt.edu/helpdesk/> Questions and comments should be directed to benchmarks@unt.edu

[Return to top](#)

[Skip Navigation Links](#)

[Page One](#)

[Campus Computing](#)

[Semester Break Hours](#)

[Gartner Core Research Services Now Available to the UNT Community](#)

[SkillSoft Site Reorganized With New Course Offerings](#)

[Today's Cartoon](#)

[RSS Matters](#)

[The Network Connection](#)

[Link of the Month](#)

[WWW@UNT.EDU](#)

[Short Courses](#)

IRC News

[Staff Activities](#)

[Subscribe to Benchmarks Online](#)

IRC News



Minutes provided by Sue Ellen Richey,
Recording Secretary*

No minutes were available for publication this month.

* For a list of IRC Regular and Ex-officio Members click [here](#).

**DCSMT Minutes can be found [here](#).

IRC Meeting Schedule

The [IRC](#) generally meets on the third Tuesday of each month, from 2-4 p.m., in the Administration Building Board Room. From time to time there are planned exceptions to this schedule. The schedule can be found [here](#). All meetings of the IRC, its program groups, and other committees, are open to all faculty, staff, and students.

Please note that information published in *Benchmarks Online* is likely to degrade over time, especially links to various Websites. To make sure you have the most current information on a specific topic, it may be best to search the UNT Website - <http://www.unt.edu>. You can also search **Benchmarks Online** - <http://www.unt.edu/benchmarks/archives/back.htm> as well as consult the UNT Helpdesk - <http://www.unt.edu/helpdesk/>. Questions and comments should be directed to benchmarks@unt.edu

[Return to top](#)

[Page One](#)
[Campus
Computing
News](#)
[Semester Break
Hours](#)
[Gartner Core
Research
Services Now
Available to the
UNT Community](#)
[SkillSoft Site Re-
organized With
New Course
Offerings](#)
[Today's Cartoon](#)
[RSS Matters](#)
[The Network
Connection](#)
[Link of the
Month](#)
[WWW@UNT.EDU](#)
[Short Courses](#)
[IRC News](#)
[Staff Activities](#)
[Subscribe to
Benchmarks
Online](#)

Research and Statistical Support University of North Texas

RSS Matters

Link to the last RSS article here: [Bayesian Packages for R version 2.2.1](#) - Ed.

Publishing HTML Documents on the Web2survey Zope Server

By [Dr Rich Herrington](#), ACS Research and Statistical Support Services Consultant

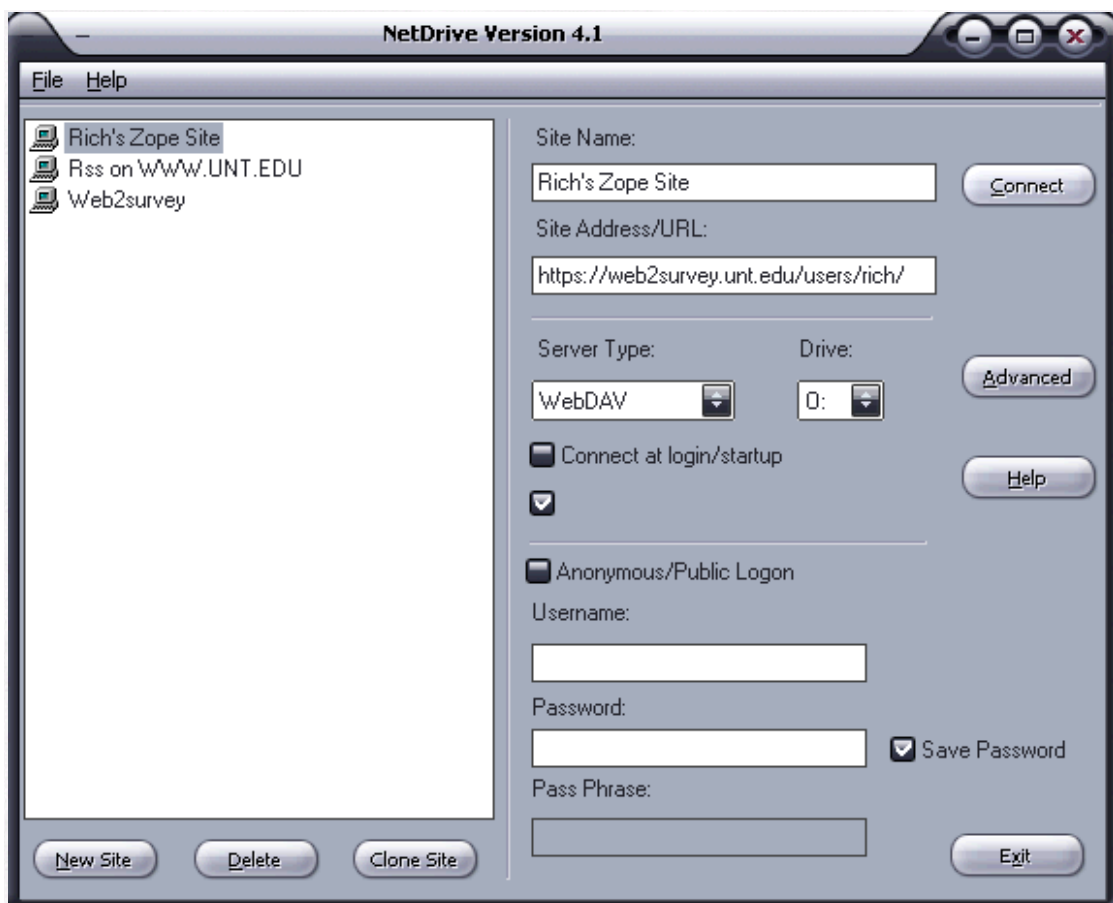
This month we take a look at publishing HTML documents on our Zope survey server:
<https://web2survey.unt.edu/>

We will be using the following two software utilities:

Novell's [Netdrive](#) WebDAV client and drive-mapper, and [NVU's open source HTML editor](#). Our demonstration will assume a Microsoft Windows Platform; however, WebDAV utilities exist for MacOS platform (e.g. [Goliath](#)).

Mapping a drive to the Zope File System

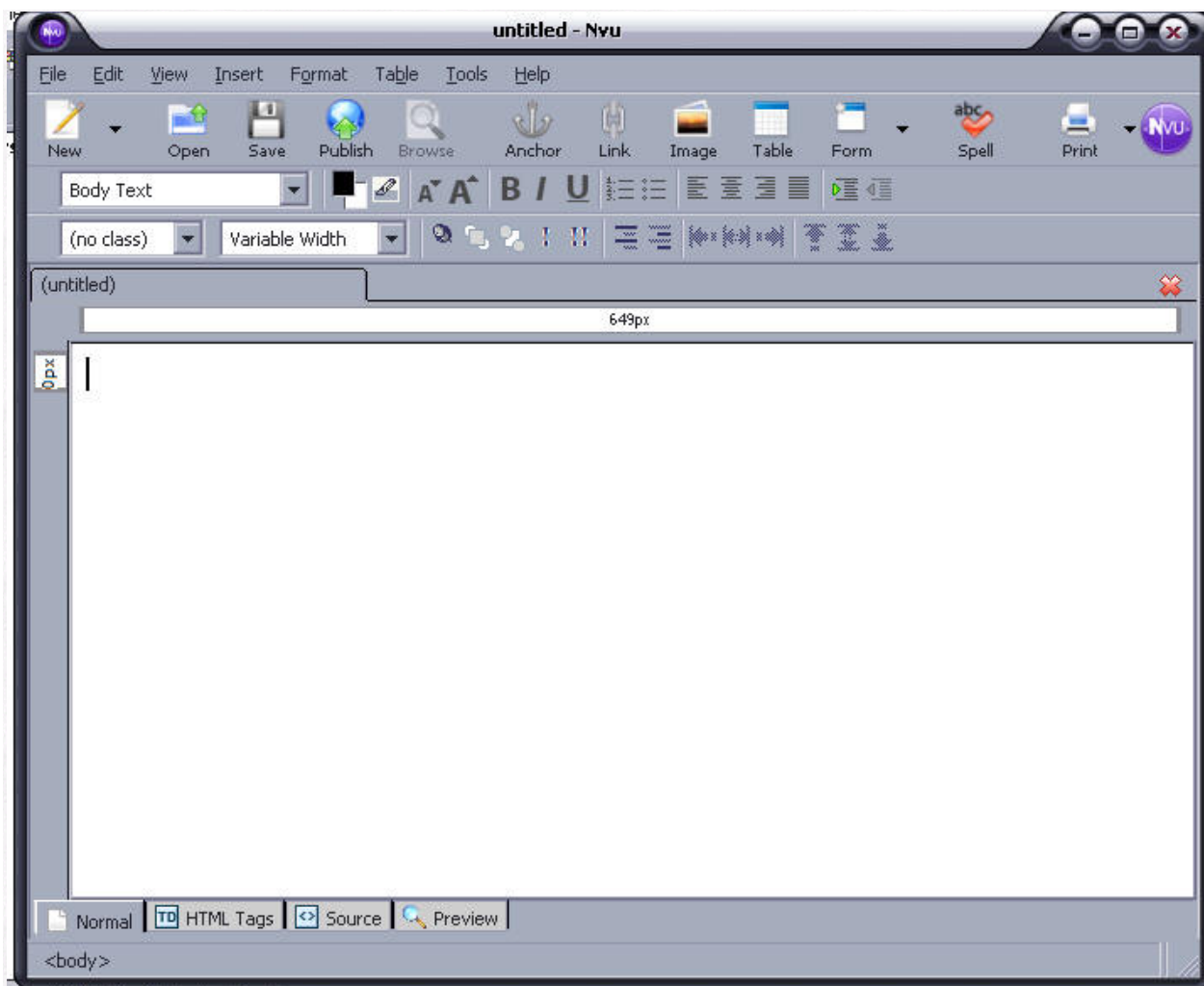
After installing Netdrive and running the program you will want to configure the connection settings. First we want check and see what drive assignment is available for our Zope address. Click on "My Computer" and look for an available letter for drive assignment (e.g. O:\). Open Netdrive and you will see the following configuration screen:



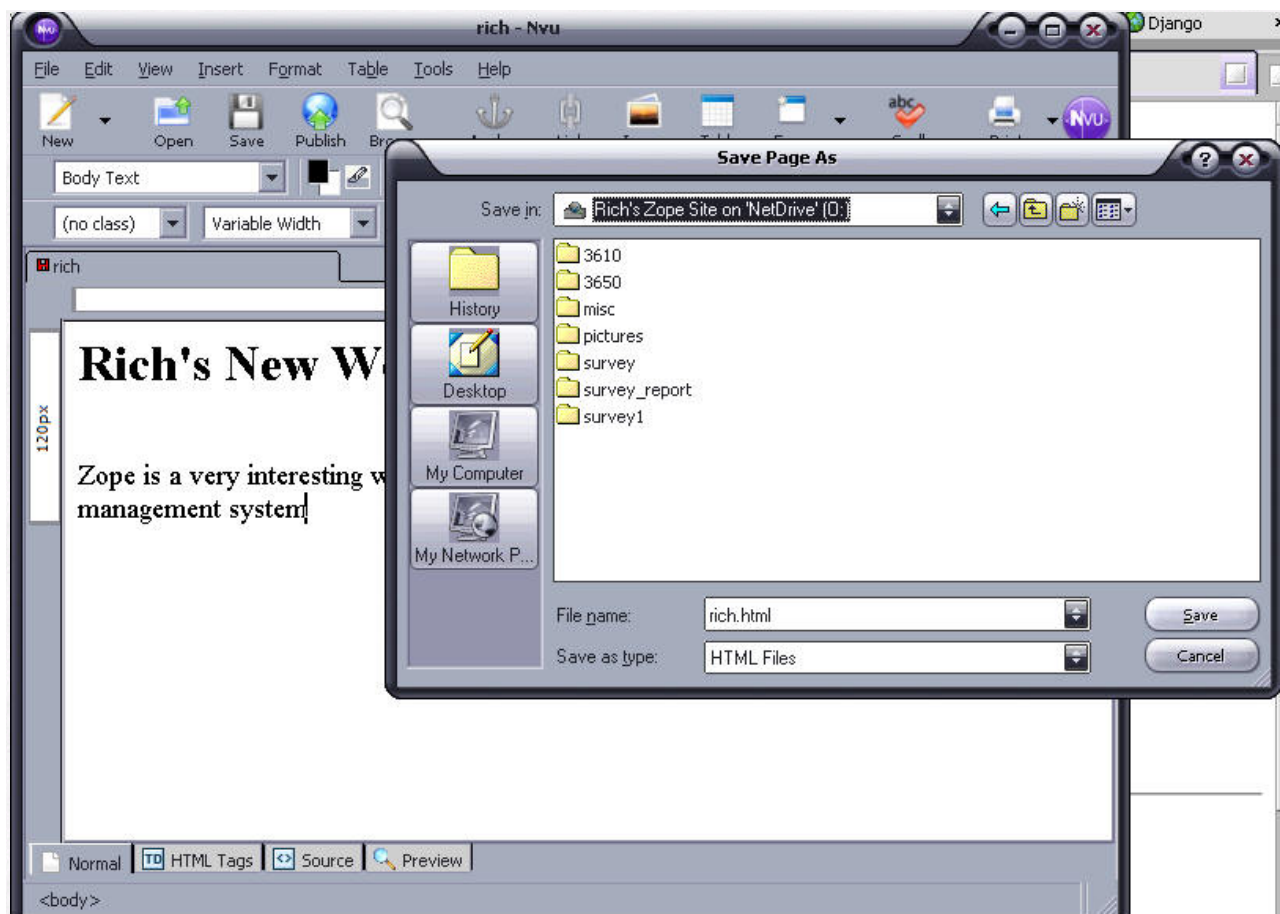
You will want to provide the URL to your account: e.g. <https://web2survey.unt.edu/users/rich/>. Provide the drive letter that the Zope file system will map to - e.g. O: . Next, make sure that Anonymous/Public Logon is NOT enabled; provide your Username and Password that were provided with your Zope account. Finally, click the connect button in the upper right portion of the panel. A Explorer type window will spawn. Copy - Paste and Drag - Drop functionality is available for this drive assignment - O:\ . Basically, any software that can write to the file system should see the O: drive as an available drive. Consult [Novell's website documentation](#) on Netdrive for further details on using this drive mapping utility.

Creating HTML Documents on Zope Using NVU

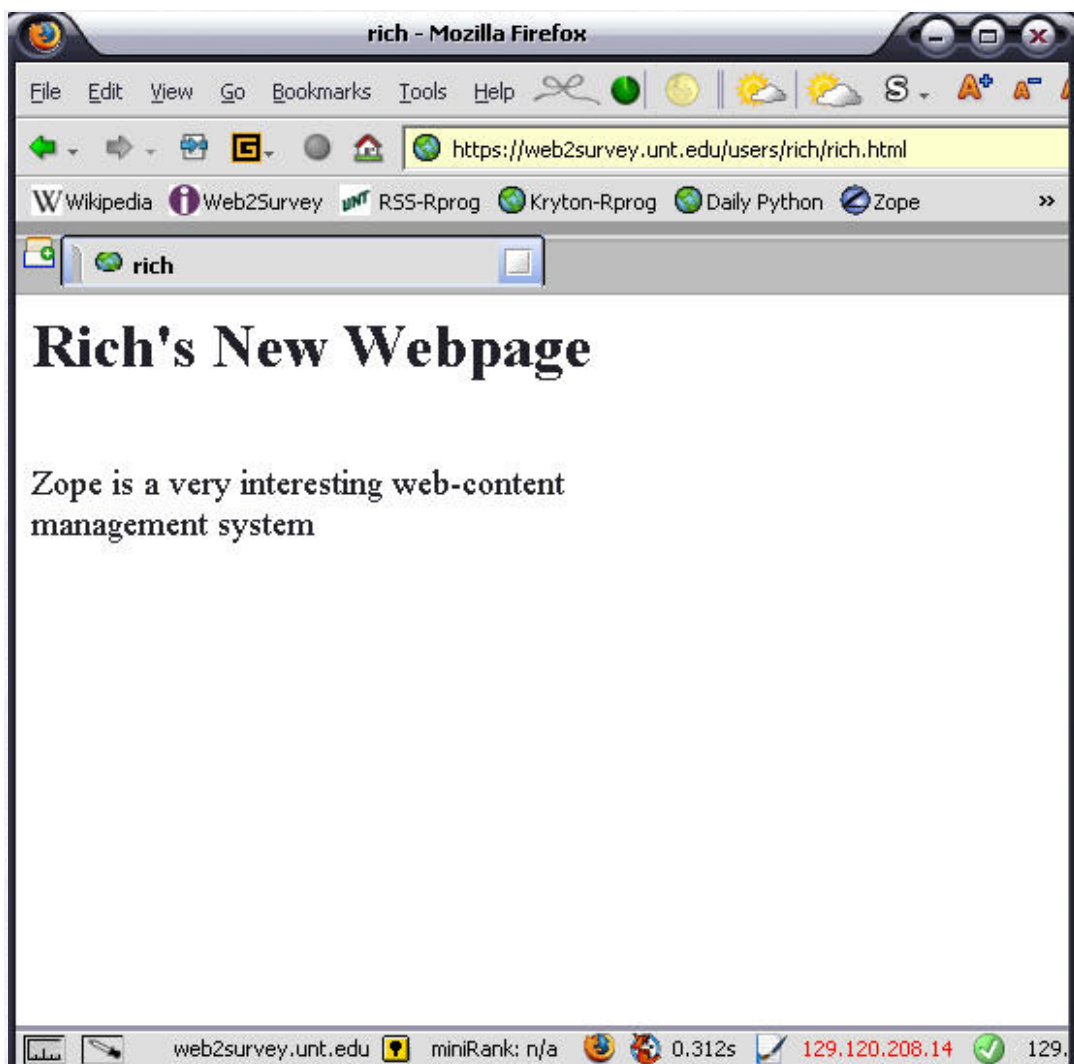
The NVU HTML Editor provides very similar functionality to Microsoft FrontPage or Dreamweaver. While not as feature rich as these popular proprietary HTML editor's, NVU has an impressive array of functionality for a free program:



To save content to the mapped drive (e.g. O:\) choose "File - Save As". You may be prompted for a title for the webpage:



This content saves to the O:\ drive, but since the O: drive is mapped to <https://web2survey.unt.edu/users/rich/> the content is automatically available for web browsing. In Firefox we browse the URL and view the webpage:



I hope this very simple demonstration of authoring content on our Web2survey Zope server solves the tricky issue of working with HTML on Zope. Until next time....Happy computing!

***** ANNOUNCING a new Blogging site for folks interested in sharing ideas about research methodology and statistics - [RSS-blogs](#) ******

Please note that information published in *Benchmarks Online* is likely to degrade over time, especially links to various Websites. To make sure you have the most current information on a specific topic, it may be best to search the UNT Website - <http://www.unt.edu>. You can also search *Benchmarks Online* - <http://www.unt.edu/benchmarks/archives/back.htm> as well as consult the UNT Helpdesk - <http://www.unt.edu/helpdesk/>. Questions and comments should be directed to benchmarks@unt.edu

[Return to top](#)

[Page One](#)
[Campus Computing News](#)
[Semester Break Hours](#)
[Gartner Core Research Services Now Available to the UNT Community](#)
[SkillSoft Site Re-organized With New Course Offerings](#)
[Today's Cartoon](#)
[RSS Matters](#)
[The Network Connection](#)
[Link of the Month](#)
[WWW@UNT.EDU](#)
[Short Courses](#)
[IRC News](#)
[Staff Activities](#)
[Subscribe to Benchmarks Online](#)

WWW@UNT.EDU

Changes in Central Web Support

We are pleased to announce that Shane Jester has been promoted to Manager of Distributed Learning Support effective April 1. Shane brings excellent qualifications to this position having managed the group several years ago when Distributed Learning at UNT was smaller. Today there are 22,011 students who are dependent upon UNT's Distributed Learning system. Most recently, Shane managed the Central Web Support team. Shane can be reached at 565-2568 or jester@unt.edu.

Charity Beck of the Computer and Information Technology Center is now serving as interim manager of Central Web Support. Charity brings over 8 years of web development experience as well as 5 years of service to the CITC to the position. Charity can be contacted at 369-7440 or cbeck@unt.edu.

Talking to a Coldfusion MX 7 Cluster with Apache2 (On Debian)

By [Shannon Eric Peevey](#), UNT Central Web Support

In an effort to enhance the stability of our Coldfusion infrastructure, we are moving from a single Coldfusion server, to a Coldfusion cluster. The following article is taken from my blog entry, <http://speeves.erikin.com/newindex/?p=6>, and documents the steps that were needed to configure Apache 2 to talk to the Coldfusion MX 7 cluster. Enjoy!!

General Information

I am currently setting up ColdFusion MX 7 on Debian Sarge. The setup looks like:

```
Apache2 - front-end machine - 192.168.208.30
2-ColdFusion MX 7 machines clustered - 192.168.208.40/192.168.208.41
```

The cluster name is "webcf".

I installed and setup the ColdFusion MX 7 cluster on two Debian Sarge machines with no problem, (ok, some problems, but it has been a month, so I don't remember exactly what they were). Clustering was more of a pain, (come on Adobe... Let's get more documentation on running ColdFusion clusters on JRun 4 servers). I'll try to remember how I did it, so I can document that as well.

Configuring Apache2 and mod_jrun20

Finally, when I went to setup Apache2 with mod_jrun20.so, I ended up copying all of the /opt/jrun4 directory to the Apache2 machine. Therefore,

```
$ ls /opt/jrun4

$ jre/bin/java -jar lib/wsconfig.jar -host 192.168.208.40 -cluster webcf
-apxs
> -ws apache -dir /etc/apache2/ -v -coldfusion -bin /usr/sbin/apache2
> -script /usr/sbin/apache2ctl
```

(Watch out that apache-dev is not installed... It is not needed for building mod_jrun20.so).

The java command above will probably generate the following error:

```
Found JRun cluster webcf at 192.168.208.40:2902
Found JRun server cfusion at 192.168.208.40:2902
Found JRun server admin at 192.168.208.40:2910
Found JRun server samples at 192.168.208.40:2918
Deleted directory /opt/jrun4/lib/wsconfig/1
Using Apache binary /usr/sbin/apache2
Using Apache control script /usr/sbin/apache2ctl
Parsing Apache configuration file /export/web/apache2/httpd.conf
Exec'ing chmod 777 /opt/jrun4/lib/wsconfig/1
Set permission to 777 on /opt/jrun4/lib/wsconfig/1
Server version: Apache/2.0.54
Exec'ing chmod +x /opt/jrun4/lib/wsconfig/1/build_jrun20
Set permission to execute on /opt/jrun4/lib/wsconfig/1/build_jrun20
Could not find the required apxs (Apache Extension Tool) binary
/usr/sbin/apxs.
Could not build A pache2 web server connector from source.
Use build script /opt/jrun4/lib/wsconfig/1/build_jrun20 .
```

This is ok. Now:

```
$ cd /opt/jrun4/lib/wsconfig/1/
```

Open build_jrun20 in your favourite editor:

```
$ emacs build_jrun20
```

And change all instances of /usr/bin/apxs to /usr/bin/apxs2. Once this is complete, save the file and run:

```
$ ./build_jrun20
/usr/bin/libtool --silent --mode=compile gcc -prefer-pic -pipe
-I/usr/include/xmltok -I/usr/inclu de/openssl -Wall -O2
-DAP_HAVE_DESIGNATED_INITIALIZER -DLINUX=2 -D_REENTRANT -D_XOPEN_SOURCE=500
-D_BSD_SOURCE -D_SVID_SOURCE -D_GNU_SOURCE -pipe -I/usr/include/xmltok
-I/usr/include/openssl -Wall -O2 -pthread -I/usr/include/apache2
-I/usr/include/apr-0 -I/usr/include/apr-0 -I/usr/includ e -w -c
-o /opt/jrun4/lib/wsconfig/1/mod_jrun20.lo
...
cp /opt/jrun4/lib/wsconfig/1/.libs/mod_jrun20.so
/opt/jrun4/lib/wsconfig/1/mod_jrun20.so
cp /opt/jrun4/lib/wsconfig/1/.libs/mod_jrun20.lai
/opt/jrun4/lib/wsconfig/1/mod_jrun20.la
cp /opt/jrun4/lib/wsconfig/1/.libs/mod_jrun20.a
/opt/jrun4/lib/wsconfig/1/mod_jrun20.a
ranlib /opt/jrun4/lib/wsconfig/1/mod_jrun20.a
chmod 644 /opt/jrun4/lib/wsconfig/1/mod_jrun20.a
libtool: install: warning: remember to run `libtool --finish
/usr/lib/apache2/modules'
chmod 644 /opt/jrun4/lib/wsconfig/1/mod_jrun20.so
```

Now, I symlink the new so to /usr/lib/apache2/modules:

```
$ ln -s /opt/jrun4/lib/wsconfig/1/mod_jrun20.so  
/usr/lib/apache2/modules/mod_jrun20.so
```

Generate the load file to work with the Debian Apache2 package:

```
$ cat > /etc/apache2/mods-available/cfm.load  
LoadModule jrun_module /usr/lib/apache2/modules/mod_jrun20.so  
Control-d to quit and save the cfm.load file.  
(Or, use your favourite editor and put the following line in  
/etc/apache2/mods-available/cfm.load:  
LoadModule jrun_module /usr/lib/apache2/modules/mod_jrun20.so
```

).

Now, enable your module:

```
$ a2enmod cfm
```

Restart Apache2:

```
$ /etc/init.d/apache2 restart ( or force-reload )
```

Please note that information published in *Benchmarks Online* is likely to degrade over time, especially links to various Websites. To make sure you have the most current information on a specific topic, it may be best to search the UNT Website - <http://www.unt.edu> . You can also search *Benchmarks Online* - <http://www.unt.edu/benchmarks/archives/back.htm> as well as consult the UNT Helpdesk - <http://www.unt.edu/helpdesk/>. Questions and comments should be directed to benchmarks@unt.edu

[Return to top](#)

[Page One](#)
[Campus Computing News](#)
[Semester Break Hours](#)
[Gartner Core Research Services Now Available to the UNT Community](#)
[SkillSoft Site Re-organized With New Course Offerings](#)
[Today's Cartoon](#)
[RSS Matters](#)
[The Network Connection](#)
[Link of the Month](#)
[WWW@UNT.EDU](#)
[Short Courses](#)
[IRC News](#)
[Staff Activities](#)
[Subscribe to Benchmarks Online](#)

Short Courses

By [Claudia Lynch](#), *Benchmarks Online* Editor

Short Courses are over for the spring. Surf over to the [Short Courses](#) page for a sample of the sorts of courses that will be offered this summer (starting, probably, at the beginning of June).

Customized Short Courses

Faculty members can request customized short courses from ACS, geared to their class needs. Other groups can request special courses also. Contact ACS for more information (ISB 119, 565-4068, lynch@unt.edu).

Especially for Faculty and Staff Members

In addition to the [ACS Short Courses](#), which are available to students, faculty and staff, staff and faculty members can take courses offered through the [Human Resources](#) Department, the [Center for Distributed Learning](#), and the UNT Libraries' [Multimedia Development Lab](#). Additionally, the Center for Continuing Education and Conference Management offers a variety of [courses](#) to both UNT and the general community, usually for a small fee.

EIS Training

Questions or comments relating to EIS training should be sent to the EISTRN GroupWise account. Upcoming EIS training events may be found at:

- Learning to Use EIS: http://www.unt.edu/eis/WebHelp/EIS_Training/Training_Start.htm
- EIS Timekeeper Training Schedule: <http://www.unt.edu/hr/eis/timetrain.htm>
- EIS ePro Training Calendar: <http://www.unt.edu/pps/trainingcalendar.htm>
- Ongoing training is available on WebCT at: http://web2.unt.edu/eis/Training/signup_form.php

GroupWise Training

Information about GroupWise training can be found at the GroupWise Support [site](#). A list of GroupWise 6.5 "Tutorial Topics" can be found here: <http://ncs.unt.edu/gw/howto/index.htm> A GroupWise 6.5 Training CD-ROM is

also available. See "[Installing and Using GroupWise 6.5 CD-ROM Training from Thomson NETg](#)" in the June issue of *Benchmarks Online* for more information.

GroupWise 6.5 Seminars

If you would like to have a Basic GroupWise seminar for your area, please contact Jason Gutierrez, Network Computing Services, jasong@unt.edu.

Center for Distributed Learning

The Center for Distributed Learning offers courses especially for Faculty Members. A list of topics and further information can be found at http://www.unt.edu/cdl/training_events/index.htm

The center also offers a "Brown Bag" series which meets for lunch the first Thursday of each month at Noon in Chilton 245. The purpose of this group is to bring faculty members together to share their experiences with distributed learning. One demonstration will be made at each meeting by a faculty member with experience in distributed learning. More information on these activities can be found at the [Center for Distributed Learning](#) Website.

Technical Training

Technical Training for campus network managers is available, from time to time, through the Network Computing Services (NCS) division of the Computing and Information Technology Center. Check the NCS [site](#) to see if and when they are offering any training.

UNT Mini-Courses

There are a variety of courses offered, for a fee, to UNT faculty, staff and students as well as the general public. For additional information surf over to <http://www.pware.com/index.cfm?clientid=2694a>

Alternate Forms of Training

Many of the [General Access Labs](#) around campus have tutorials installed on their computers. The [Training](#) Web site has all sorts of information about alternate forms of training. Computer Based Training (CBT) is one of the alternatives offered.

For further information on CBT at UNT, see the CBT [website](#). Note also, two articles in the November issue of *Benchmarks Online*, "[Using the Adobe Education Website - Revised November 2005](#)" and "[SkillPort and Thomson NETg Offer Easy-to-use Browser Compatibility Testing for Online Learning.](#)" The recently published article "[Project Management Courses Added to the SkillPort CBT Website](#)" may also be of interest.

The article [Tracking Progress in New KnowledgeNet Courses](#) in the January issue of *Benchmarks Online* gives instructions on how to set up tracking for each course. The article [SkillSoft Site Re-organized With New Course](#)

[Offerings](#) in this issue of *Benchmarks Online* should also be noted. This information is also available on the [CBT website](#).

Please note that information published in *Benchmarks Online* is likely to degrade over time, especially links to various Websites. To make sure you have the most current information on a specific topic, it may be best to search the UNT Website - <http://www.unt.edu> . You can also search **Benchmarks Online** - <http://www.unt.edu/benchmarks/archives/back.htm> as well as consult the UNT Helpdesk - <http://www.unt.edu/helpdesk/> Questions and comments should be directed to benchmarks@unt.edu

[Return to top](#)

[Page One](#)
[Campus Computing News](#)
[Semester Break Hours](#)
[Gartner Core Research Services Now Available to the UNT Community](#)
[SkillSoft Site Re-organized With New Course Offerings](#)
[Today's Cartoon](#)
[RSS Matters](#)
[The Network Connection](#)
[Link of the Month](#)
[WWW@UNT.EDU](#)
[Short Courses](#)
[IRC News](#)
[Staff Activities](#)
[Subscribe to Benchmarks Online](#)

Staff Activities

Transitions

New Employee:

- **William Senn** - Programmer/Analyst, UNT/HSC Fiscal Systems.

Changes:

- **Shane Jester**, manager of Central Web Support, has been promoted to Manager of Distributed Learning Support effective April 1. **Charity Beck**, is now serving as interim manager of Central Web Support. For further information, see WWW@UNT.EDU in this issue of *Benchmarks Online*.

Awards, Recognition, Publications, etc.

Wedding Bells!

David Franklin and **Danja Anthony**, both employed in Computer Operations, were married March 17 at the Denton Courthouse by Justice of the Peace, Kenny Kirkland. David's mother, [Sandy Burke](#), reports that it was a great ceremony, and then the [happy couple](#) left for a short honeymoon in the Piney Woods of East Texas.

Another New Baby!!

Congratulations to **Gary Snow**, Distributed Learning Support, and his wife Christine on the birth of their son Dylan Ray Snow, born 3/16/06.

You can call him Doctor . . .

He doesn't graduate until May, but you can call him "Doctor" now. **Richard (Rich) Anderson**, Information Security Analyst, recently completed his PhD in Information Science. The title of his dissertation is *Functional Ontology Construction: A Pragmatic Approach to Addressing Problems Concerning the Individual and the Informing Environment*. Whew! Congratulations Rich!

Composer Residency

Dr. Elizabeth Hinkle-Turner, Student Computing Services Manager, was a composer-in-residence at Muhlenberg College in Allentown, Pennsylvania March 23-25. She taught classes and had a recital of her musical work presented.

Soaring Eagles

The following people were recognized as Soaring Eagles in the April 2006 *Human Resources Newsletter*. They will receive their awards at the President's Staff Lunch on May 10, 2006:

- **Yancy Yeargan**, Network Computing Services, LDAP/ID Management.
- **Monika Botha**, Admissions and Financial Aid Integration, Programmer Analyst.
- **Jason Myre**, Network Computing Services, Messaging GroupWise.
- **Don Butler**, UNT Student/Contributor Services, Application Team Manager.
- **Brian Richman**, EIS Technical Services, Programmer/Analyst.
- **Nancy Fisher**, EIS Technical Services, Administrative Computing Team Manager.
- **Charles Douglas**, Data Warehouse & Reporting Infrastructure, Student Assistant.
- **David Walden**, Telecommunications Specialist.
- **JP Williams**, Central Web Support, Web Developer.

Please note that information published in *Benchmarks Online* is likely to degrade over time, especially links to various Websites. To make sure you have the most current information on a specific topic, it may be best to search the UNT Website - <http://www.unt.edu>. You can also search *Benchmarks Online* - <http://www.unt.edu/benchmarks/archives/back.htm> as well as consult the UNT Helpdesk - <http://www.unt.edu/helpdesk/>. Questions and comments should be directed to benchmarks@unt.edu

[Return to top](#)

[Page One](#)

[Campus Computing News](#)

[Semester Break Hours](#)

[Gartner Core Research Services Now Available to the UNT Community](#)

[SkillSoft Site Reorganized With New Course Offerings](#)

[Today's Cartoon](#)

[RSS Matters](#)

[The Network Connection](#)

[Link of the Month](#)

[WWW@UNT.EDU](#)

[Short Courses](#)

[IRC News](#)

[Staff Activities](#)

[Subscribe to Benchmarks Online](#)

Don't Forget Our Monthly Columns!

By [Claudia Lynch](#), *Benchmarks Online* Editor

In addition to our feature articles, *Benchmarks Online* publishes monthly columns that are focused on specific aspects of computing here at UNT (and beyond, in some cases). Check out what is waiting for you this month:

- [RSS Matters](#) - "RSS Matters" is the monthly column written by the Research and Statistical Support [Group](#) in Academic Computing Services. Their articles focus on topics of a statistical and/or research methods nature. **This month, Dr. Rich Herrington talks about "Publishing HTML Documents on the Web2survey Zope Server,"**

Also: ANNOUNCING a new Blogging site for folks interested in sharing ideas about research methodology and statistics. Read all about it!

- [The Network Connection](#) - "The Network Connection" may well be the longest running column in computer publishing history. Certainly in University of North Texas computer [publishing history](#).

This month, Dr. Baczewski talks about what is "Coming to a Website Near You." Your computer has never been so busy!

- [Link of the Month](#) - As it says on the top of the "Link of the Month" page, "each month we highlight an Internet, USENET Special Interest Group (SIG), or similar mailing list(s) or Website(s)." Lately we have been confining ourselves to featuring UNT specific sites. **This month's feature is "Center for Distributed Learning." This is the place to find out the latest on upcoming activities and other exciting distributed learning topics.**
- [WWW@UNT.EDU](#) - "WWW@UNT.EDU" is a monthly column written by the Central Web Support [Group](#) in Academic Computing Services. The topics usually focus, in some way, on World-Wide-Web-related issues. **This month Shannon Peevey talks about "Talking to a Coldfusion MX 7 Cluster with Apache2 (On Debian)." Find out all about the "Changes in Central Web Support" on this page also.**
- [Short Courses](#) - Every semester, Academic Computing Services (ACS) offers short courses on computer-related topics, many of them having to do with statistical research. This column keeps you up-to-date on what is being offered and when as well as other training opportunities. Short Courses are over for the spring. Surf over to the [Short Courses](#) page for a sample of the sorts of courses that will be offered this summer (starting,

probably, at the beginning of June).

- [IRC News](#) - As their Webpage [says](#), "the IRC is an advisory and oversight body created to foster communication and cooperation between and among UNT information resources providers and users." We publish the minutes of the IRC meetings each month, when they are available. **No minutes were available to be published this month.**
- [Staff Activities](#) - This column focuses on new employees, people who are no longer employed at the Computing and Information Technology Center, awards and recognitions and other items of interest featured here. This month there are some new babies to report.

Please note that information published in *Benchmarks Online* is likely to degrade over time, especially links to various Websites. To make sure you have the most current information on a specific topic, it may be best to search the UNT Website - <http://www.unt.edu> . You can also search *Benchmarks Online* - <http://www.unt.edu/benchmarks/archives/back.htm> as well as consult the UNT Helpdesk - <http://www.unt.edu/helpdesk/> Questions and comments should be directed to benchmarks@unt.edu

[Return to top](#)